



Climate Control Solutions

Bard Manufacturing Company
Bryan, Ohio 43506

INSTALLATION INSTRUCTIONS

CMA-18A

LOW PRESSURE CONTROL AND LOW AMBIENT FAN CYCLING CONTROL

DESCRIPTION

The CMA-18A is a field installable low pressure control and low ambient fan cycling control kit. The CMA-18A consists of:

1. Installation Instruction 7960-469A
2. Terminal Block 8607-017
3. Low Pressure Control 1804-0107
4. Low Ambient Fan Cycling Control 1804-0280
5. CMA-18A Unit Label 7961-312-0123

For use with all WA/WL484 – WA/WL603 Hi-Boy Wall Mount Air Conditioners (A & B ELECTRICAL VERSIONS ONLY).

INSTALLATION INSTRUCTIONS

For use with all WA/WL484 – WA/WL603 Hi-Boy Wall Mount Air Conditioners produced after July 1998.

Disconnect all power to unit. Remove control panel inner and outer covers, and right side condenser inlet grille. Circled numbers on Figure 2 correspond to installation instruction steps. Dashed lines indicate that a wire has been disconnected from this terminal.

- Step 1. Route low (blue) pressure switch wires up through the bushing in the bottom of the control panel. Replace sealing compound after routing wires through the bushing. Route the wires through the wire holders in the control panel as shown in Figure 2.
- Step 2. Remove jumper wire from LPC to LPC on compressor control module (CCM). See Figure 2, Step 2.
- Step 3. Connect low pressure switch wires between terminals LPC and LPC of the compressor control module (CCM). See Figure 2, Step 3.
- Step 4. Mount terminal block into control with screw as shown in Figure 2, Step 4.
- Step 5. Disconnect black high voltage outdoor motor lead from compressor contactor and

reconnect to terminal block. Route wires through wire holder as shown in Figure 2, Step 5.

- Step 6. Route low ambient control wires up through the bushing in the bottom of the control panel. Replace sealing compound after routing wires through the bushing. Route the wires through the wire holders in the control panel as shown in Figure 4. Connect the low ambient control wires between the terminal block and T2 of the compressor contactor. See Figure 2, Step 6.
- Step 7. Remove service port caps on both the suction and liquid line. Install the low ambient control on the liquid line with the flare tee adapter that is brazed to the control. Install the low pressure switch on the suction line. Check for pressure at the flare tee dill valves after installation to insure that the dill valve in the unit service port was depressed by the flare tee connector. Check for leaks at the flare tee connectors. Replace service port caps on the flare tee service ports and tighten. See Figure 1.
- Step 8. Recheck wiring. Refer to Figure 2. Energize unit in first stage cooling. Compressor should start. Run the unit for at least 5 minutes. The unit should not go into lockout. The condenser fan motor should not run until the discharge pressure has exceeded 300 PSI. Should the discharge pressure fall below 200 PSI while running, the condenser fan motor will de-energize until the head pressure builds to 300 PSI.
- Step 9. Apply "This unit equipped with CMA-18A control module" label to the inside of the inner control panel cover above the wiring diagram.
- Step 10. Replace all panels and covers. This completes installation.

FIGURE 1

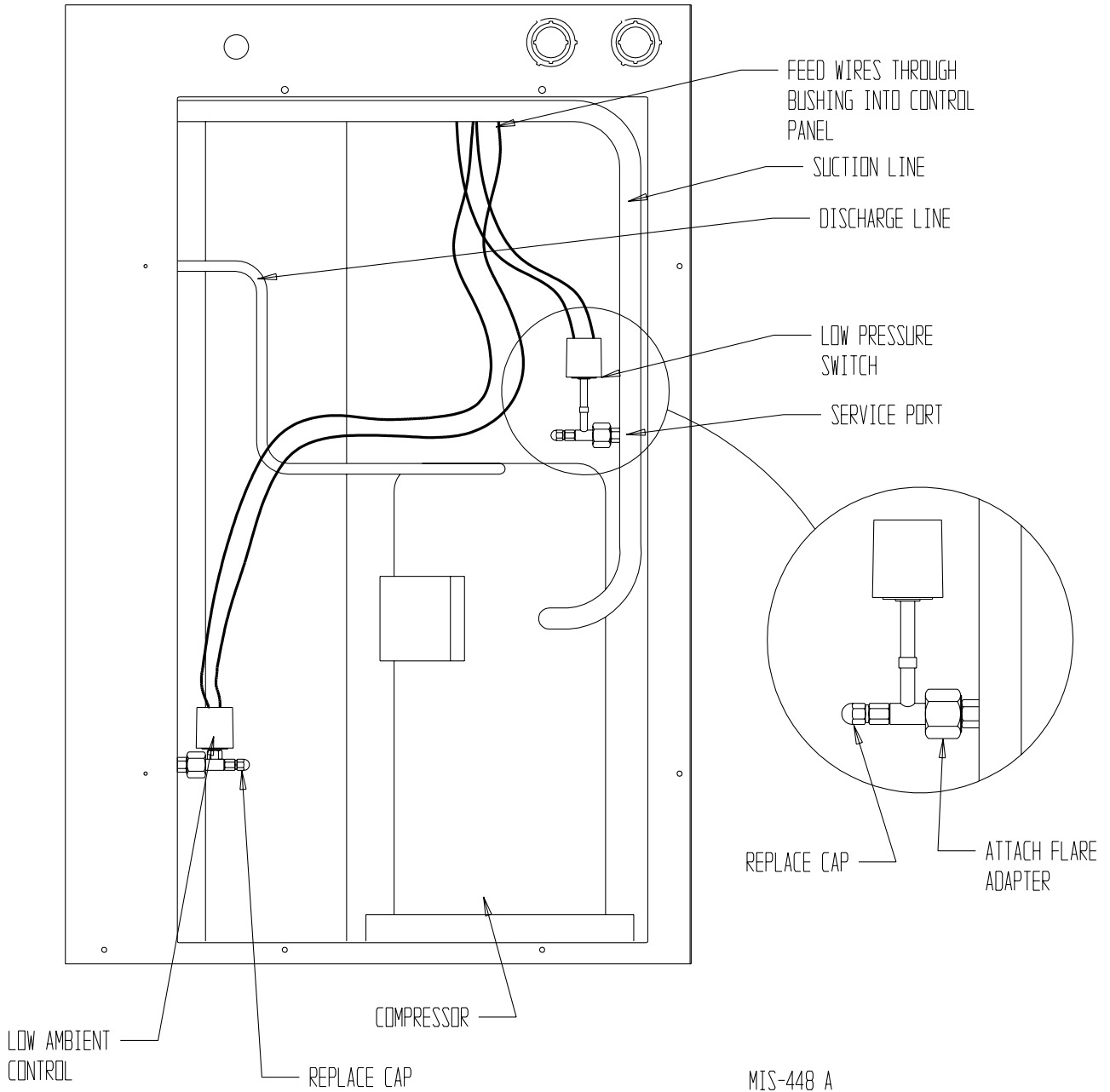
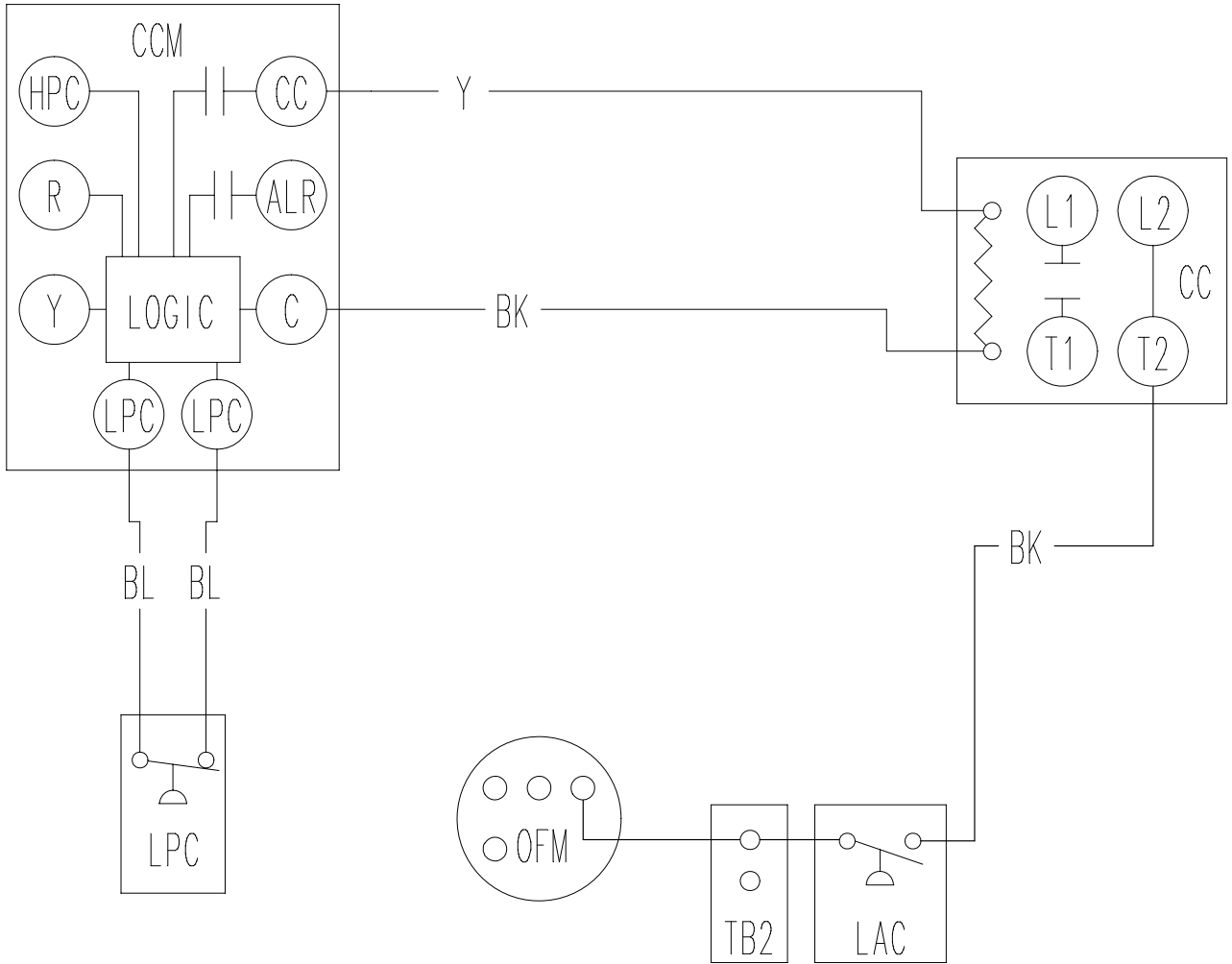


FIGURE 3



MIS-1370