
SUPPLEMENTAL INSTRUCTIONS

WGWC3-* Wall Curb

This wall curb is designed to be used when replacing a Bard WAG30, WAG36 or WAG40 Series gas/electric unit or a Bard 3-ton air conditioner or heat pump WA/WH30-36 Series with a WG24, WG30 or WG36 Series gas/electric unit. The WG Series unit has different spacing between the supply and return opening and requires this curb for installing over the existing openings.

Hardware included:

- 1" Bolts (14)
- Washers (28)
- Lock Nuts (14)
- Screws (32)

WARNING

Follow installation instructions exactly. The WG Series units require a 1" clearance from combustibles to the supply duct for the first 3'. Refer to Figure 2 on page 3 for the duct clearance information.

Failure to follow these installation instructions exactly could result in a fire, property damage or loss of life.

* Denotes Color

X = Beige

1 = White

4 = Gray

8 = Dark Bronze

Installation

1. Assemble the curb as shown in Figure 1 on page 2.
2. Before attaching the curb to the wall make sure that the supply opening is sized to allow for a 1" clearance to all combustibles. See Figure 3 on page 4 for wall opening sizes.
3. Attach the curb to the wall first. The mounting flange hole spacing is designed to line up with a Bard 3-ton wall mount unit. At the bottom of the curb, two (2) additional holes are required in structure. The curb mount will also fit the framework for a WAG model; however, the mounting hole pattern is different so new holes will need to be drilled in the structure.

Fasteners for attaching the curb to the wall are not provided with this kit due to a variety of structure designs. **It is the responsibility of the installer to determine the appropriate fastening method to support the entire weight of the curb and unit based on wall construction.**

4. Attach a supply air sleeve to the supply air frame. This sleeve should measure the same size as the air frame opening and be long enough to extend through the supply opening in the structure wall. This sleeve must be securely fastened to the air frame and sealed with a material capable of withstanding temperatures of 200°F continuously. Outfit the supply air sleeve with means of maintaining the 1" required clearance to all combustible materials once the unit is installed.

The return air flange is designed to be bent flat against the unit back before installing unit to curb. This must be done to ensure proper airflow once installed. Refer to Figure 2 on page 3 for details.



Bard Manufacturing Company, Inc.

Bryan, Ohio 43506

www.bardhvac.com

Manual: 7960-493D

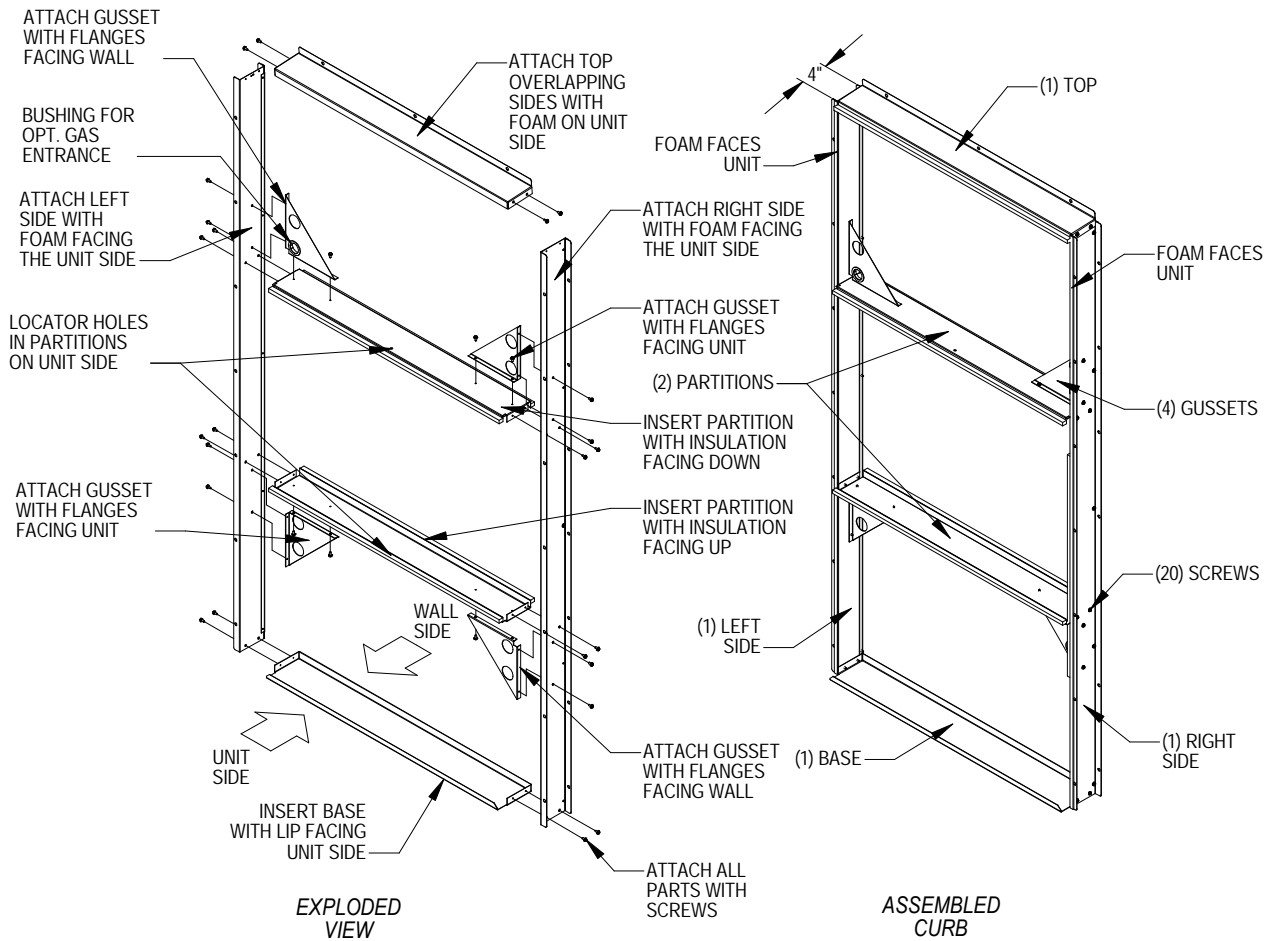
Supersedes: 7960-493C

Date: 1-27-22

Climate Control Solutions

5. Lift unit into position and support it while the supplied fasteners are installed through the unit mounting flange and the wall curb. See Figure 4 on page 5.
6. Caulk the flanges of the wall curb where they meet the wall. Caulk the top of unit where it meets the wall curb (see Figure 5 on page 6).

FIGURE 1
Wall Curb Assembly



MIS-1730 A


FIGURE 2
Unit Mounting Preparation

STEP #3

ATTACH 28" x 8"
DUCT TO UNIT AND
SEAL TO SUPPLY
FLANGE WITH 200°F
SEALANT.

STEP #4

CHECK SEAL BETWEEN
UNIT AND DUCT AND
MAKE SURE IT IS AIR-TIGHT

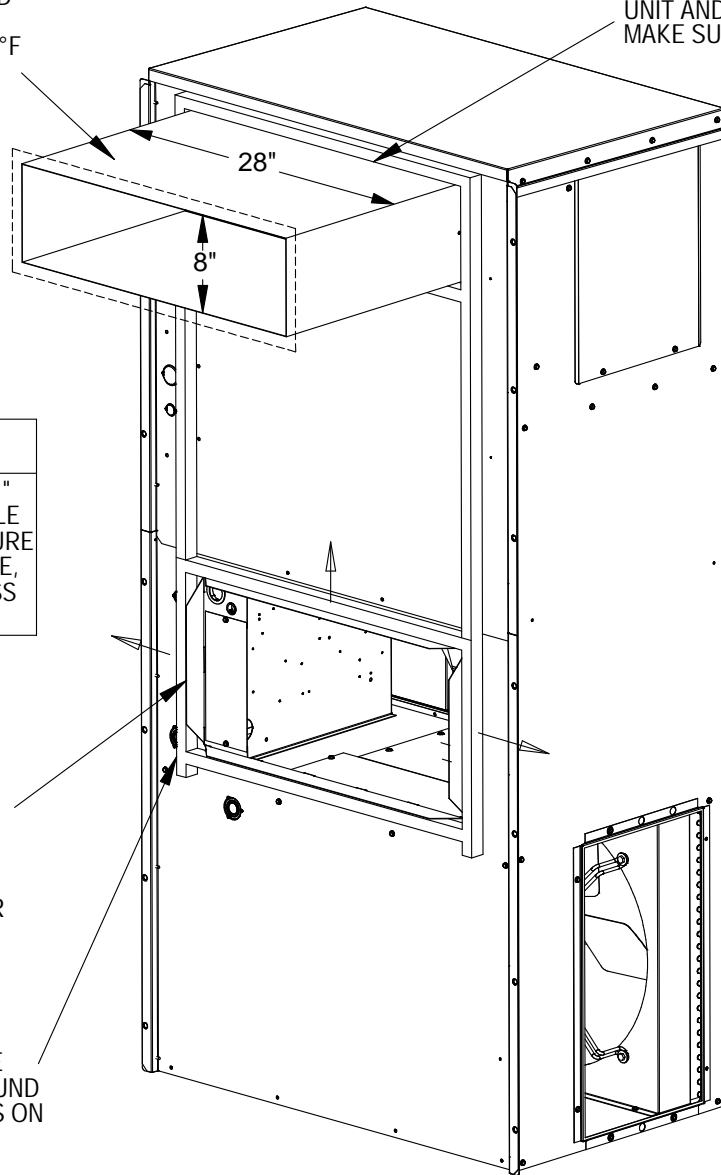
 **WARNING**
SUPPLY DUCT MUST HAVE 1"
CLEARANCE TO COMBUSTIBLE
MATERIALS. FAILURE TO ENSURE
THIS COULD RESULT IN A FIRE,
PROPERTY DAMAGE, OR LOSS
OF LIFE.

STEP #2

FLATTEN (3)
RETURN FLANGES
OUTWARDS TO BE
FLUSH WITH UNIT.
THIS WILL ALLOW
MORE RETURN AIR
THROUGH CURB.

STEP #1

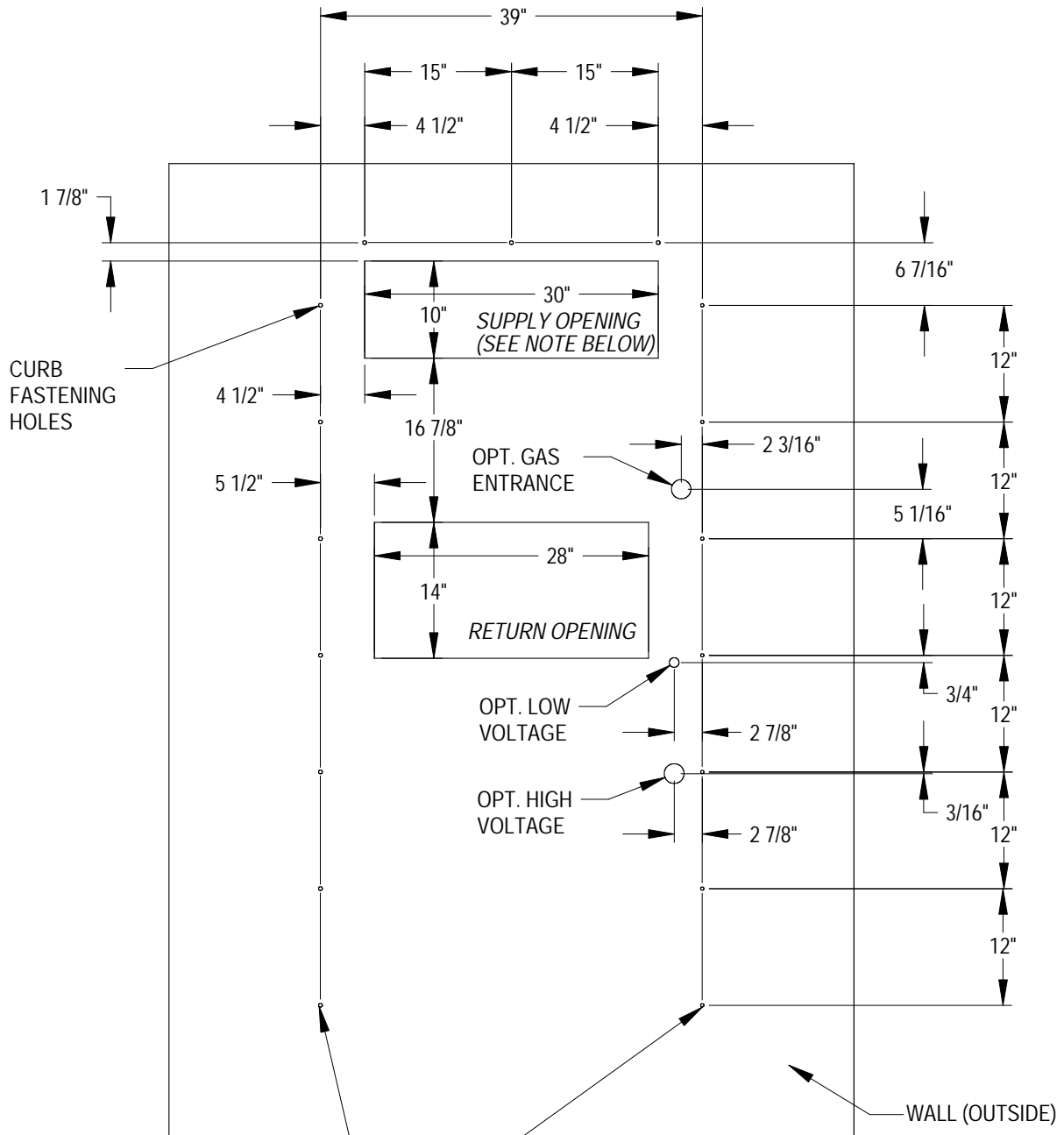
CUT AND REMOVE
FOAM FROM AROUND
RETURN FLANGES ON
LOWER BACK.



BACK OF WG UNIT

MIS-1731 A

FIGURE 3
Wall Preparation



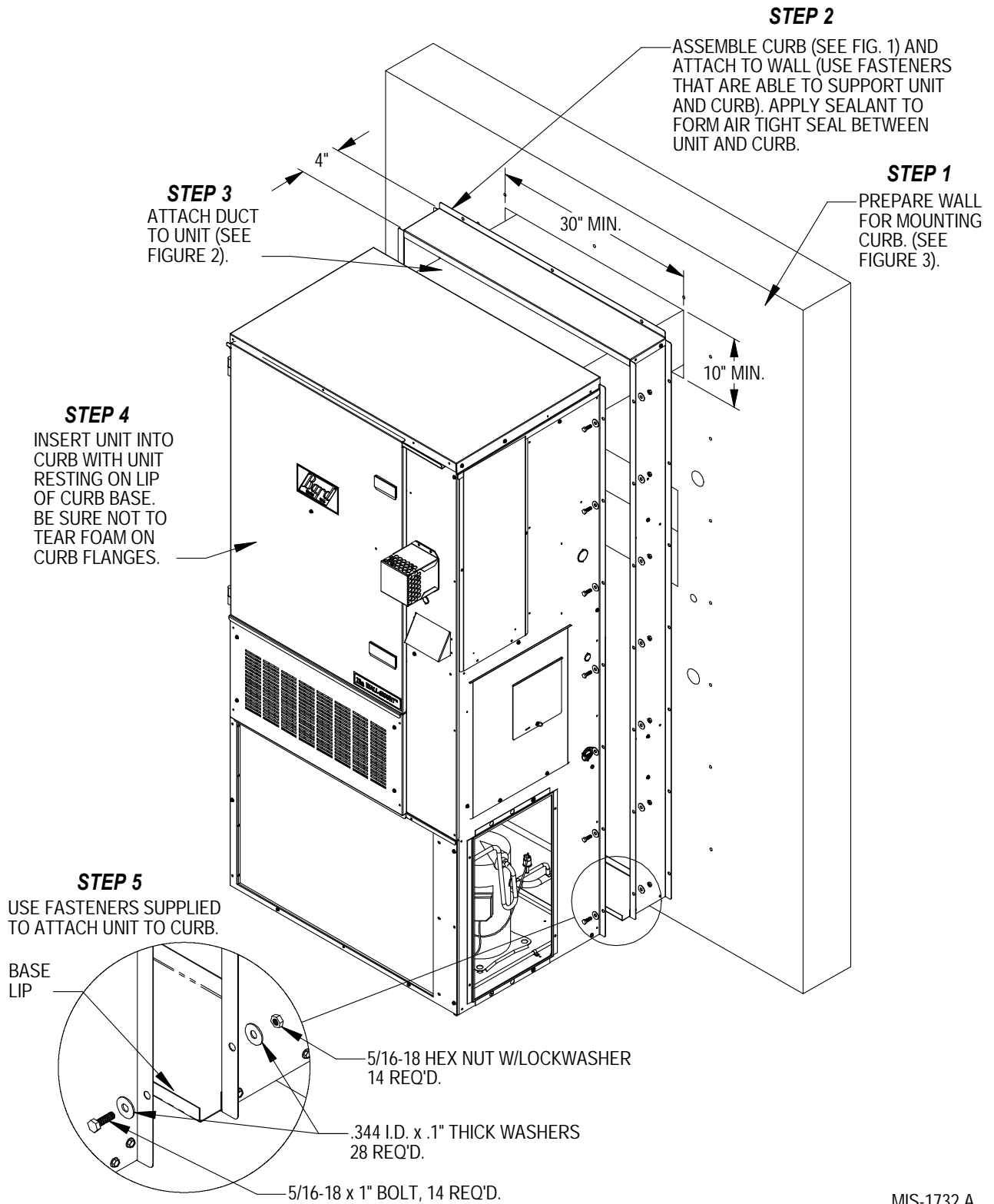
NOTE: THESE HOLES ARE NOT IN HOLE PATTERN OF WA301-361



NOTE: SUPPLY OPENING SIZE GIVEN IS FOR A 28" x 8" DUCT. OPENING MUST BE MADE TO ALLOW FOR 1" CLEARANCE TO COMBUSTIBLE MATERIALS.

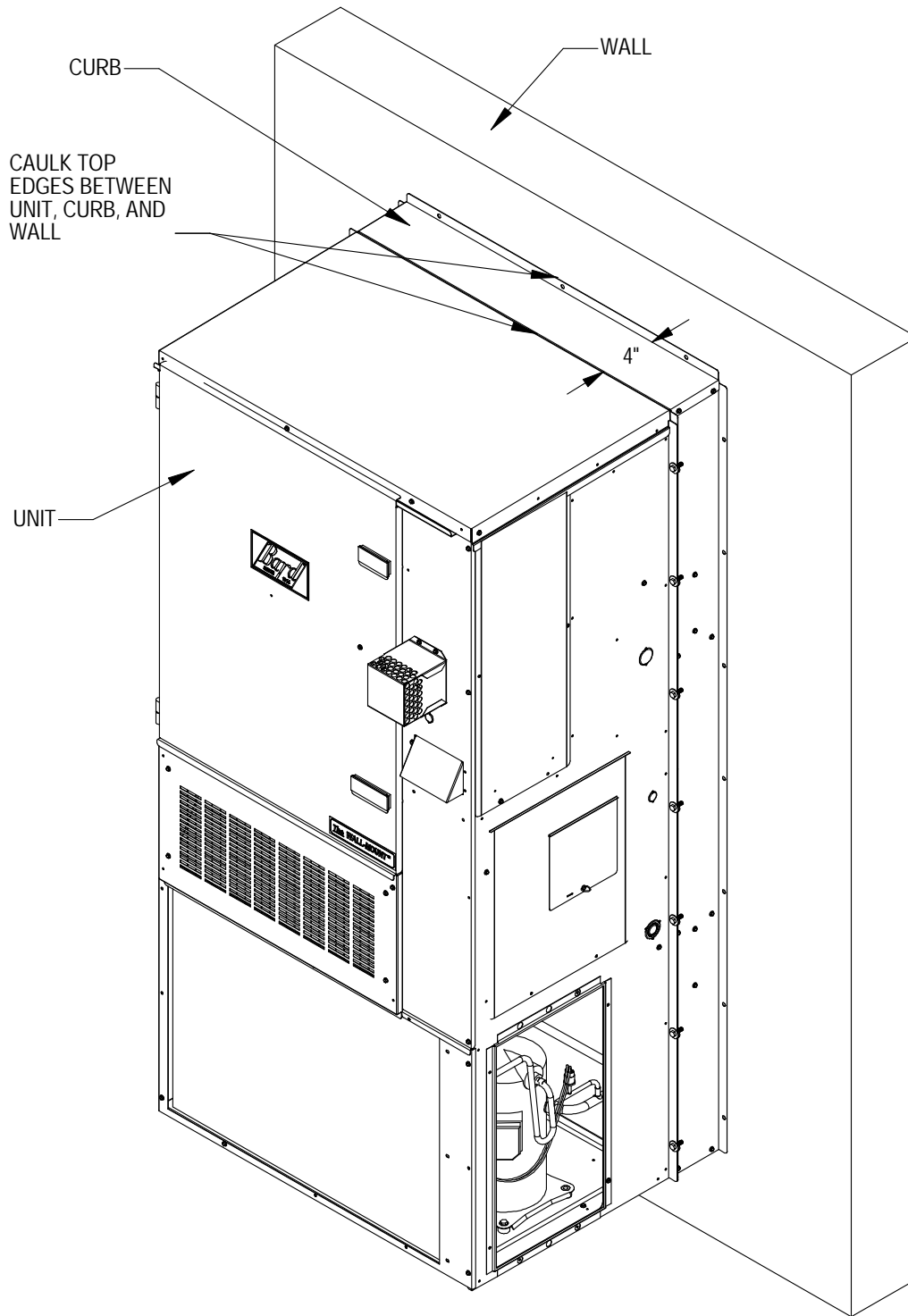
MIS-1733 A

FIGURE 4
Curb and Unit Installation



MIS-1732 A

FIGURE 5
Caulking Top of Unit and Wall Curb



MIS-1728 A