
SUPPLEMENTAL INSTRUCTIONS

8620-344 Wall Mount TS/TH/CH UV-C LED Field Kit

WARNING

Electrical shock hazard.
Disconnect the remote electric power supply or supplies before servicing.
Failure to do so can result in serious injury or death.

WARNING

Exposed moving parts.
Disconnect all electrical power before servicing.
Failure to do so can result in severe injury or amputation.

CAUTION

Sharp metallic edges.
Take care and wear appropriate protective devices to avoid accidental contact with sharp edges.
Failure to do so can result in personal injury.

CAUTION

Ultraviolet band C (UV-C) energy may cause damage to non-metallic components except for UV-rated and HVAC-style drain pans. Select mounting locations that prevent exposure to vulnerable components. If mounting locations are limited, protect components with UV-resistant material such as aluminum foil, aluminum duct tape, metallic shields, etc.



CAUTION

UV radiation hazard.
Use only with shielding in place.
Protect eyes and skin from exposure to UV light.

Overview

The UV-C field-installed light kits utilize UV-C LED lighting technology to sterilize and improve overall air quality within an occupied space. UV-C exposure is proven to damage the DNA of microorganisms and render them inactive aiding in preventing the spread of diseases.



Bard Manufacturing Company, Inc.
Bryan, Ohio 43506
www.bardhvac.com

Manual: 7960-920
Supersedes: **NEW**
Date: 6-23-21

Climate Control Solutions

Product Specifications

| | |
|--|-----------------------------|
| Model | |
| Olympia UV-C Light F15T5-15W-UVC-DL | |
| Electrical Specs | |
| Input Voltage | 120-277VAC |
| Power Consumption | 15W |
| Frequency | 50/60Hz |
| Dimensional Specs | |
| Unit Dimensions | 15-1/8" L x 3/4" H x 1" D |
| Weight | 1 lb |
| Performance | |
| Irradiance | 170 μ W/cm ² |
| UL Listing and Certifications | |
| Compliance and Certifications | UL 1598 |
| | CSA C22.2#250.0 |
| | UL 8750 |
| | UL 2043 |
| | CE |
| | RoHS Directive |
| "UV-C LED Light Bar Installed" Label 7961-622-0375 is located near unit serial plate | |

WARNING

UV-C exposure can cause burns to skin and damage eyes.

Ensure proper safety precautions are taken during installation.

A trained, experienced technician must install the UV-C field kit.

Personal Protective Equipment (PPE)

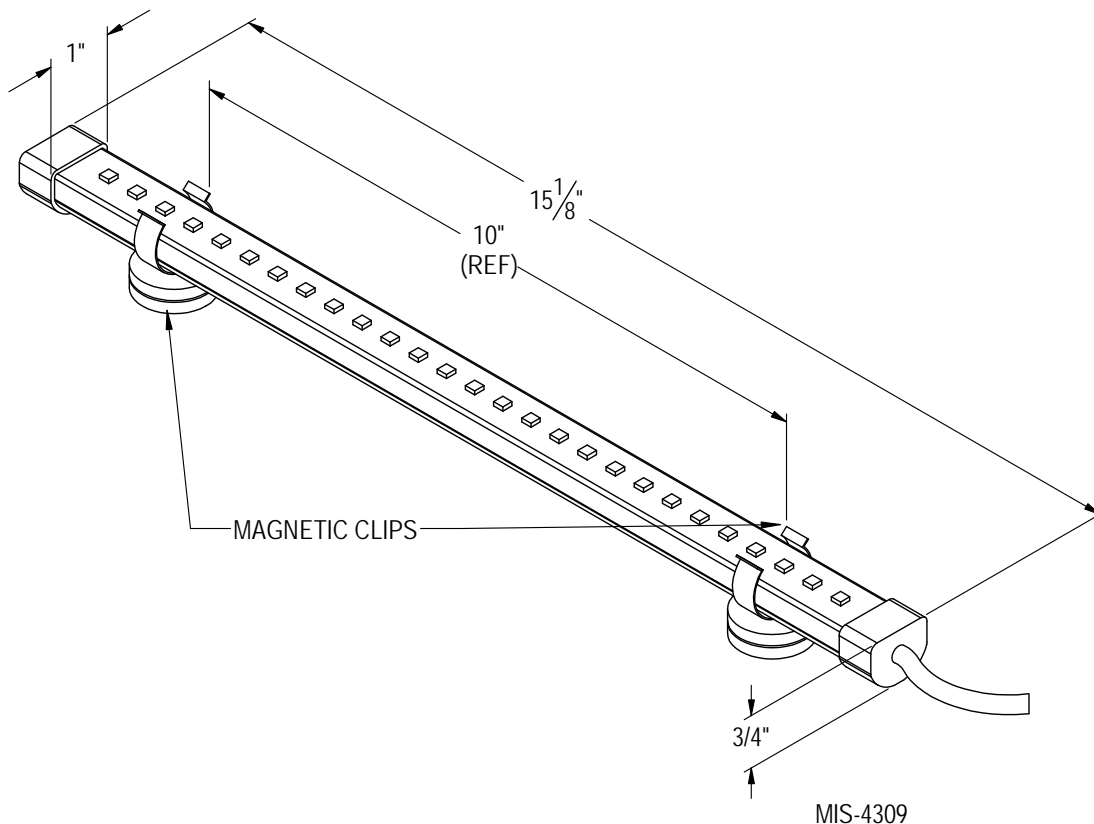
UV radiation is absorbed by clothing, plastic or glass. Once absorbed, the UV radiation is no longer active. Wear UV goggles or face shield. Cover any exposed skin with coats, gloves, etc.

UV-C band light spectrum is not visible to the eye.

NOTE: The health aspects associated with the use of this product and its ability to aid in disinfection of environmental air have not been investigated by UL.

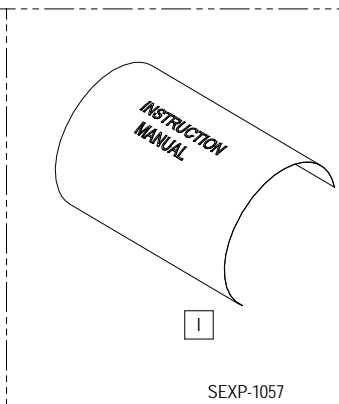
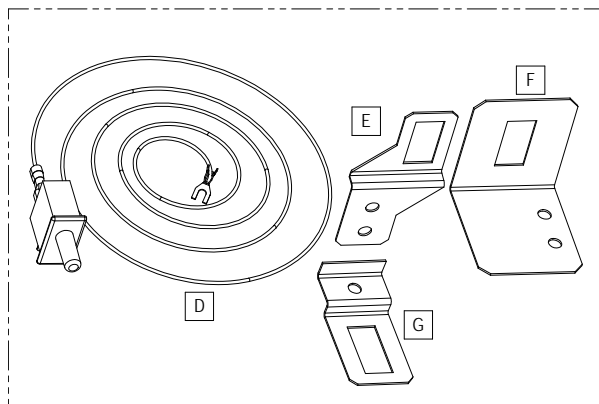
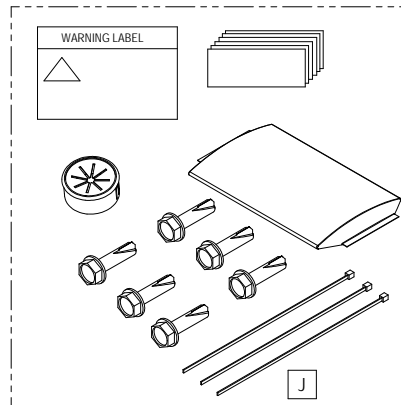
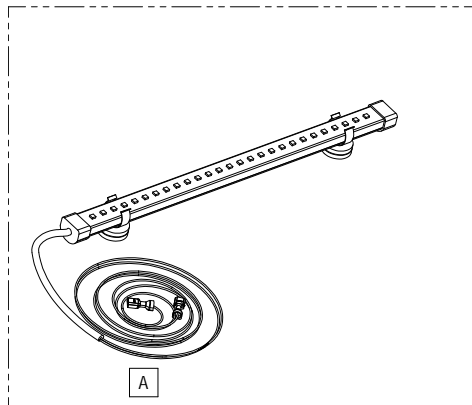
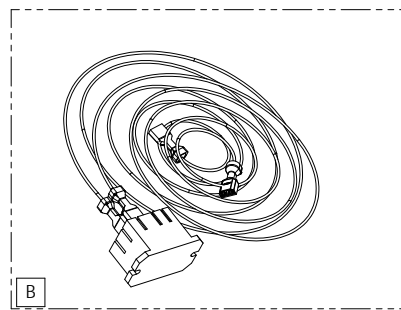
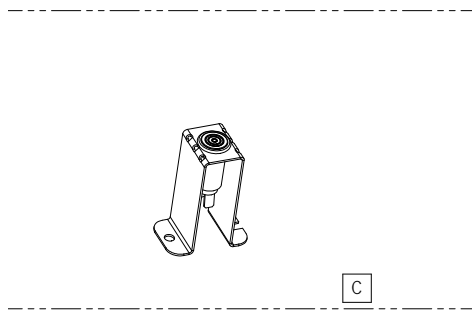
NOTE: Color shift or chalking may occur without affecting structural properties.

Dimensions



Parts List

| Reference Letter | Bard P/N | Description | Qty. |
|------------------|-----------|---|------|
| A | 910-2181 | 15" UV-C Assembly | 1 |
| B | 910-2182 | Relay Assembly | 1 |
| C | 910-2183 | Red Indicator Light Assembly | 1 |
| D | 910-2184 | Door Panel Switch Assembly (Interlock Safety Device) | 1 |
| E | 113-908 | Bracket (WH/Q-TEC Q**H/A4 Units) | 1 |
| F | 113-909 | Bracket (I-TEC Units) | 1 |
| G | 113-913 | Bracket (Q-TEC Units) | 1 |
| I | Per Model | Supplemental Instructions Manuals and Wire Diagrams | 4/2 |
| J | 400-0467 | Parts Bag – Six (6) Screws, Three (3) Zip Ties, Six (6) Pieces of Foil Tape, Bushing, UV-C Warning Label and “UV-C LED Light Bar Installed” Label | 1 |



SEXP-1057

Installation

Field-supplied tools needed:

- Appropriate personal protection equipment, including gloves and safety glasses
- Electrical meter to verify power status
- Drill
- Phillips head screwdriver
- 5/16" nut driver
- 7/8" drill bit (optional)

Installation Procedure

1. Disconnect all power to HVACR unit. Use the meter to verify that power has been disconnected.
2. Open front doors and remove inner control panel cover.
3. Remove blower housing cover (large upper panel).
4. Attach two (2) magnetic clips to the UV light assembly (see **Dimensions** drawing on page 2).
5. Install UV light assembly onto the blower partition on the inside of the front flange as shown in Figure 1. UV light should be directed over blower outlets, facing evaporator coil. (Models may have air

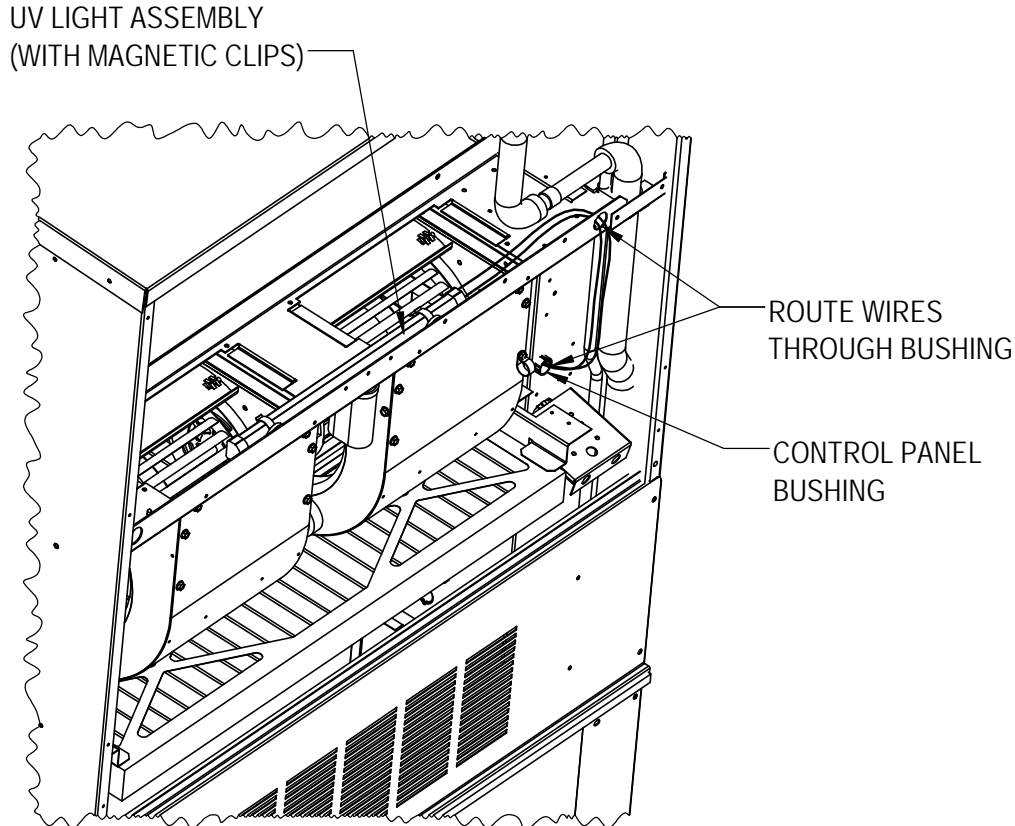
deflector or control box mounted to blower partition; however, UV light can still be installed as shown.)

6. Route wires into control panel through bushing in blower partition or through copper grommet or wire bushing, then into control panel (see Figure 1).

NOTE: *Not all models will have bushing in blower partition. A 7/8" hole can be drilled and supplied bushing can be installed.*

7. Connect red wire from UV light assembly to "NO" contact on the relay assembly (see **Field Installation Diagram** on page 8).
8. Determine unit supply voltage—located on the unit serial plate. Connect black wire from UV light assembly to:
(230V-1PH) – "L2"
(230V-3PH) – "L3"
(460V-3PH) – Terminal block
See **Field Installation Diagram** on page 8.
9. Connect red wire from "COM" on relay assembly to:
(230V-1PH) – "L1"
(230V-3PH) – "L1"
(460V-3PH) – Terminal block
See **Field Installation Diagram** on page 8.

FIGURE 1
Install UV Light Assembly and Route Wires

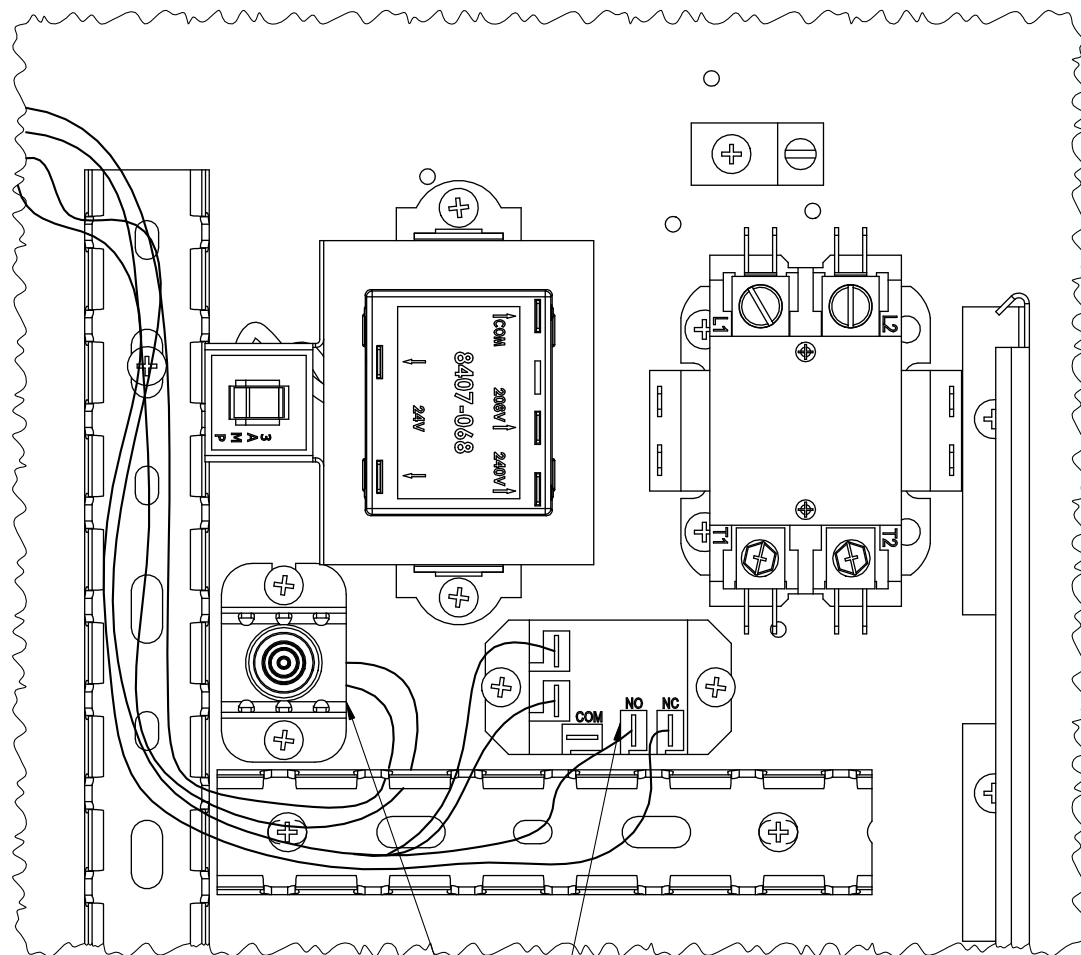


MIS-4328

10. Connect short orange wire from relay assembly to indicator light assembly.
11. Connect short black/white wire from relay assembly to indicator light.
12. Control panel assemblies vary due to available control options. Find unused space on control panel and install relay and indicator light assemblies in control panel using self-drilling screws provided (see Figure 2).
13. Install door panel switch into panel switch bracket 113-908 (see Figure 3 on page 6). **Door panel switch acts as interlock safety device to disable UV light source upon removal of blower access panel preventing UV exposure.**
14. Install panel switch assembly on the left side of blower partition using self-drilling screws as shown in Figure 3. Some models may have an air deflector installed on the blower partition; mount switch assembly onto air deflector as shown.
15. Route long orange wire from relay assembly (up to door panel switch) and connect to "NO". Route orange wire from door panel switch (down to control panel) through the blower partition and control panel bushing as shown in Figure 1 on page 4.

NOTE: Not all models will have bushing in blower partition. A 7/8" hole can be drilled and supplied bushing can be installed.

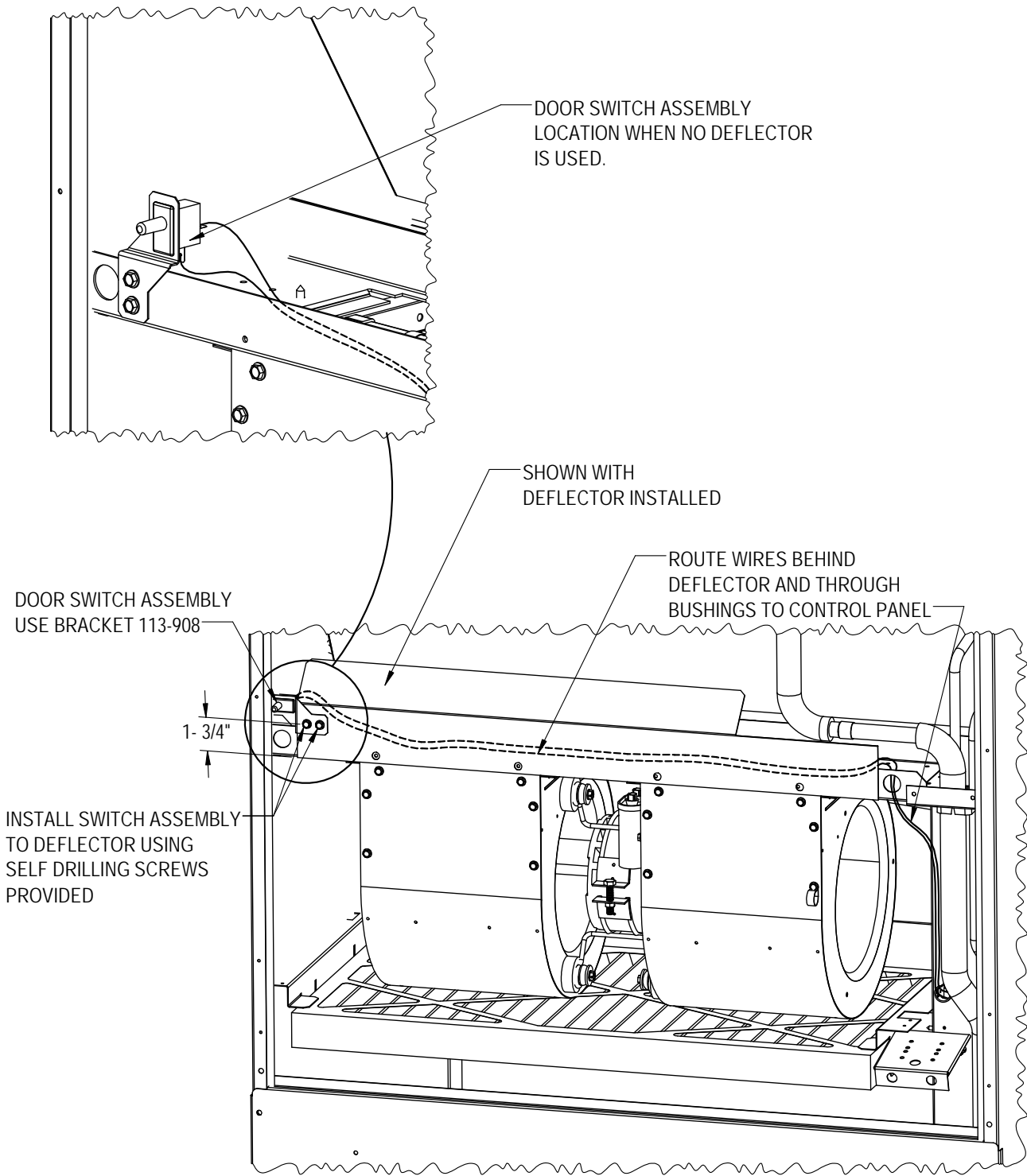
FIGURE 2
Install Relay and Indicator Light Assemblies



MIS-4329

SPACE IS LIMITED IN CONTROL PANELS ON SOME MODELS. INSTALL RELAY AND INDICATOR LIGHT WHERE THERE IS SPACE AVAILABLE.

FIGURE 3
Install Panel Switch Assembly



MIS-4330

16. Locate low voltage strip in control panel. Seat spade end of orange wire from panel switch assembly under the "G" terminal on the low voltage strip assembly, then seat spade end of black/white wire from coil on relay assembly under the "C" terminal on low voltage strip (see Figure 4).

17. Wires can be dressed with provided zip ties or by tucking into wire channels. Ensure wires are secured away from sharp edges and moving parts to prevent damage.

Cover wires and plastic components within a distance of 6" of the UV light with foil tape to create a protective barrier from the UV light.

18. UV light will not function without blower panel installed because of panel switch (interlock safety switch). **Do NOT press door panel switch with blower panel removed as the UV source could become active and create UV exposure.**

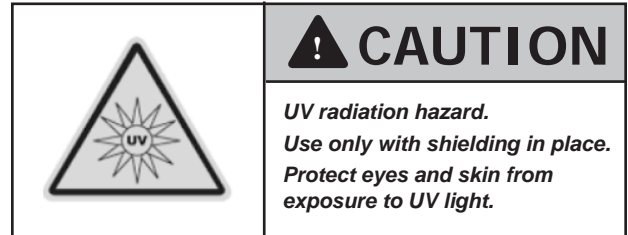
Replace blower access cover (large upper panel).

Adhere UV-C Warning Label 7961-963 to blower access panel.

Adhere "UV-C LED Light Bar Installed" Label 7961-622-0375 to unit serial plate. (Serial plate is silver and located on the exterior of the unit cabinet or on a service panel with "5253-039-XXXX" printed in the lower right corner.)

19. Now that blower panel is installed, UV light operation can be safely verified. Restore power to unit and provide a "G" call signal from the thermostat. Operation can be confirmed if indicator light installed in Step 8 is ON in control panel.

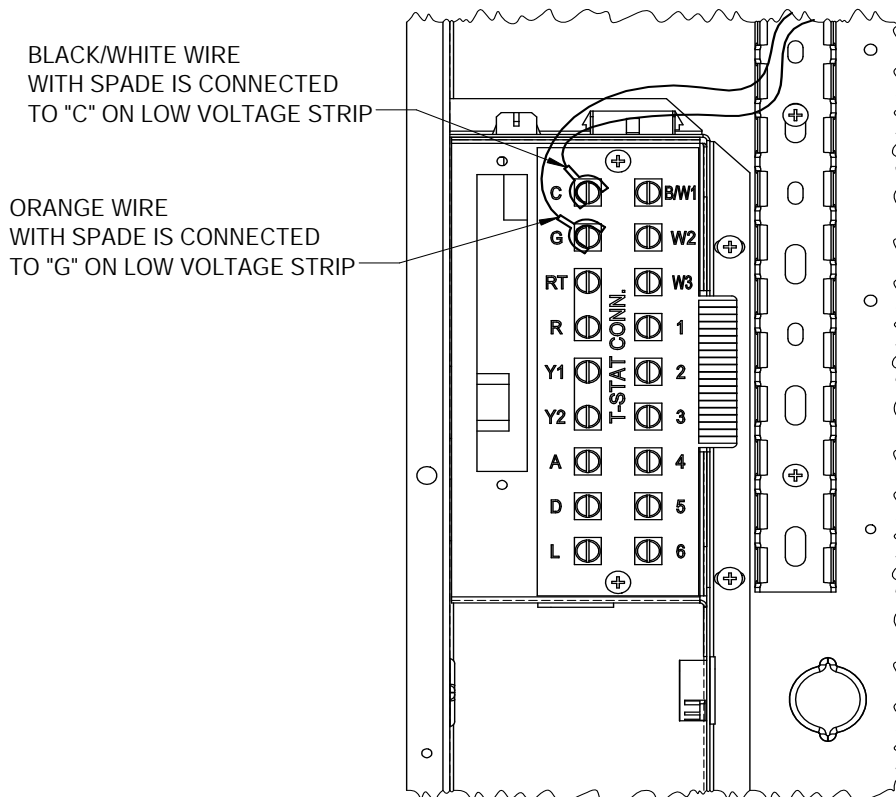
Do NOT attempt to look at UV source to confirm operation!



20. Disconnect power to unit. Replace all inner and outer panel covers.

21. Restore power to unit.

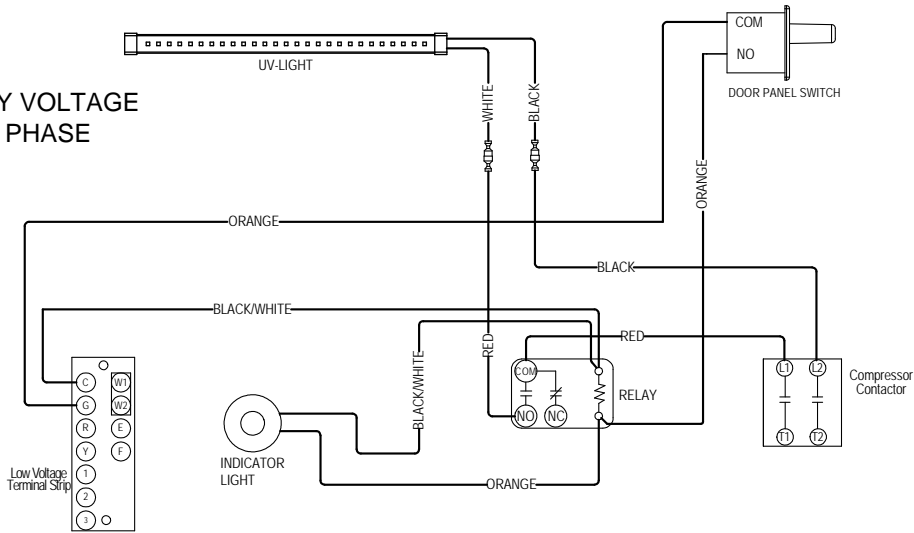
**FIGURE 4
Low Voltage Terminal Strip Connection Points**



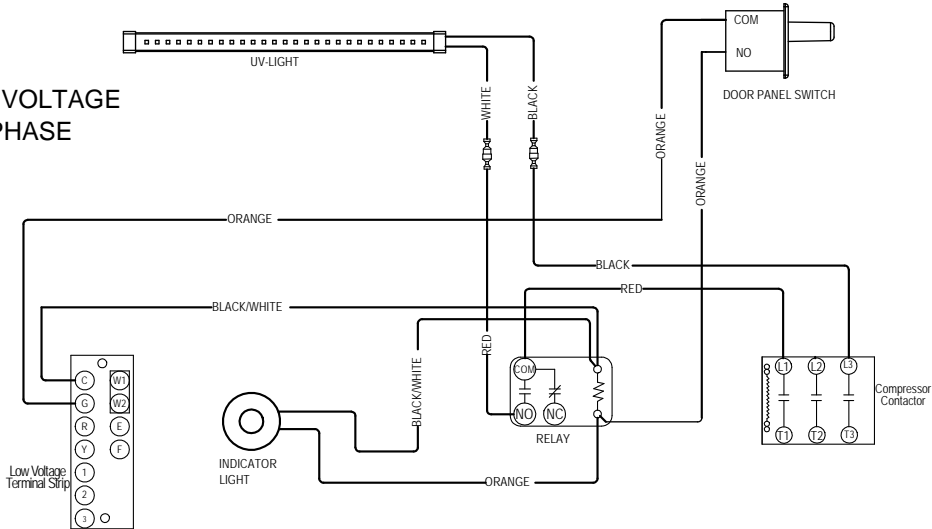
MIS-4331

FIGURE 5
Field Installation Diagram

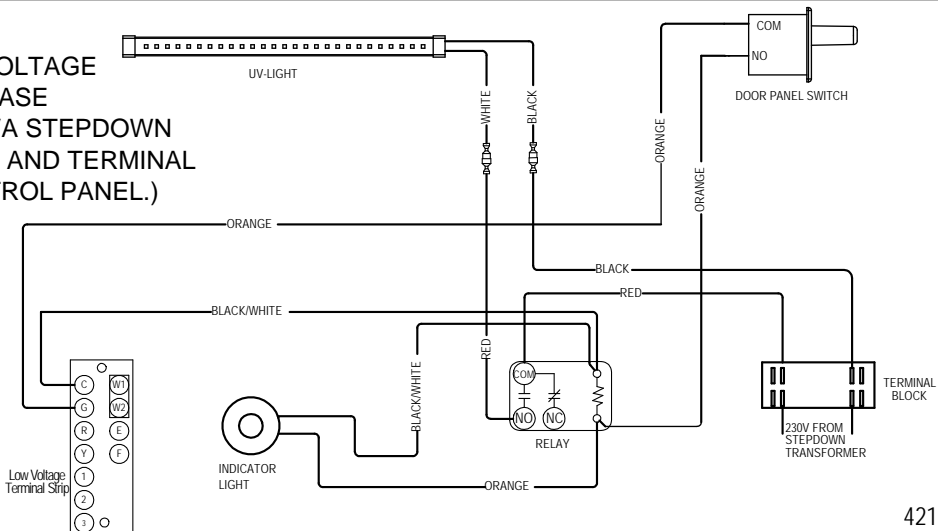
UNIT SUPPLY VOLTAGE
230 VOLT - 1 PHASE



UNIT SUPPLY VOLTAGE
230 VOLT - 3 PHASE



UNIT SUPPLY VOLTAGE
460 VOLT - 3 PHASE
(UNITS WITH KVA STEPDOWN
TRANSFORMER AND TERMINAL
BLOCK IN CONTROL PANEL.)



4214-101