
SUPPLEMENTAL INSTRUCTIONS

CCURB* and CFC* Curbs

Contents	Figures
Product Overview..... 2	Figure 1 Curb Model: CCURBF2430..... 4
Curb Construction..... 2	Figure 2 Curb Model: CCURBT2430..... 5
Curb Models 2	Figure 3 Curb Model: CCURBF4860..... 6
CCURBF..... 2	Figure 4 Curb Model: CCURBT4860..... 7
CCURBT..... 2	Figure 5 Curb Model: CFCF-32 8
CFCF..... 2	Figure 6 Curb Model: CFCT-32..... 9
CFCT..... 2	Figure 7 Curb Model: CFCF-53 10
Wall Curb Application Guide 3	Figure 8 Curb Model: CFCT-53..... 11
Installation..... 12	Figure 9A CCURBF2430 Rotating Back Panels ... 13
CCURBF and CCURBT..... 12	Figure 9B CCURBF4860 Rotating Back Panels ... 13
CFCT-53B-*, CFCF-53B-* Retrofit Installations ... 22	Figure 10 Wall Mounting Instructions 14
Replacement Parts 30	Figure 11 Wall Mounting Instructions 14
Wall Curb..... 30	Figure 12 Electric Heat Clearance..... 15
Top Box Assembly..... 32	Figure 13 CCURBF2430 Supply/Return Openings..16
	Figure 14 CCURBT2430 Supply/Return Openings..17
	Figure 15 CCURBF4860 Supply/Return Openings..18
	Figure 16 CCURBT4860 Supply/Return Openings..19
	Figure 17 CCURBF Fastening Unit to Back 20
	Figure 18 CCURBT Fastening Unit to Curb..... 21
	Figure 19 CFCF and CFCT Mounting Plug Holes.. 23
	Figure 20 CFCF-32 Supply and Return Openings..24
	Figure 21 CFCF-32 Supply and Return Openings..25
	Figure 22 CFCF-53 Supply and Return Openings..26
	Figure 23 CFCT-53 Supply and Return Openings..27
	Figure 24A Sealing with Caulk..... 28
	Figure 24B Sealing with Caulk (Top Outlet Curb) ... 29



Climate Control Solutions

Bard Manufacturing Company, Inc.
Bryan, Ohio 43506
www.bardvac.com

Manual: 7960-930A
Supersedes: 7960-930
Date: 1-29-24

Product Overview

Wall curb products are an optional accessory that can be installed between the Bard wall mount product and an exterior wall surface to replace equipment on an existing building or provide the lowest indoor sound level possible for new construction projects. The wall curb designs included in this manual are designed to provide an easy-to-use method of reducing sound levels inside a room being conditioned by the wall mount and to provide unit upgrade options with minimal wall modifications.

These curbs can be used for W30-60H, W30-72A, W*SA, T**S, T**H and C36-60H. The CCURBF and CFCF can also be used on W**G and W*GS units but a top adapter panel is required to make the top of the curb align with the top of the WG wall mount. For a CCURBF4860, a WGCA5-* is required; for a CCURBF2430, a WG9CA3-* is required and for a CFCF-53, a WGFCF5-* is required.

The curb consists of:

- Curb (see chart on page 3 and parts breakdown on pages 30 – 32)
- 5/16" nuts (12)
- 5/16" washers (12)
- Screws (12)
- 7960-930A Supplemental Instructions

Field-supplied tools needed:

- Appropriate personal protection equipment, including gloves and safety glasses
- 5/16" nut driver
- 1/2" (13mm) wrench or deep well socket
- 3/4" (19mm) wrench or socket
- Safe method for lifting equipment
- Outdoor-rated silicone caulk

Curb Construction

Curb design uses an inner frame that attaches to the building wall and an outer frame that attaches to the new wall-mount unit. Rubber isolators separate the inner and outer frames. This patented design provides advanced vibration isolation between the unit and wall surface and reduces the transfer of vibration from the compressor, indoor fan and outdoor fan into the indoor area.

Back panels and middle partitions are used in all curb designs that seal and separate the return and supply air paths. Curb designs include the ability to remove the back panels and adjust the return opening location (see chart and curb figures for alternate back return opening locations). This provides a means of offsetting the return opening of the unit and the return air path in the room. By using an offset air path, sound levels can be reduced by minimizing the direct path of sound travelling into the room through the return air grille. If offsetting the return air path is not possible due to existing wall construction, the back panels can be adjusted to match existing

wall opening locations (see chart and curb figures for alternate back return opening locations).

Curb Models

CCURBF

A curb solution used to reduce sound and vibration with normal unit applications. The back panels can be configured to either reduce or use the same supply and return spacing as the new unit being installed. When used with the reduced supply and return spacing, the return air path is offset for increased sound reduction.

CCURBT

A curb solution that can be used to reduce sound and vibration where the supply air path extends into an overhang or soffit. The back panel configuration offsets the return air path for sound reduction while keeping the new unit supply and return opening spacing. The upper portion of the CCURBT ships disassembled on the skid alongside the curb to meet shipping height requirements. Recommended for low external duct static applications only.

CFCF

A curb solution to reduce sound and vibration and for replacing equipment on an existing building. The back panel configuration offsets the return air path for sound reduction while keeping the existing supply and return opening spacing.

CFCT

A curb solution for replacing equipment on an existing building and for when the supply air path extends into an overhang or soffit. The back panel configuration offsets the supply and return air path for sound reduction while keeping the existing units supply and return opening spacing. Recommended for low external duct static applications only.

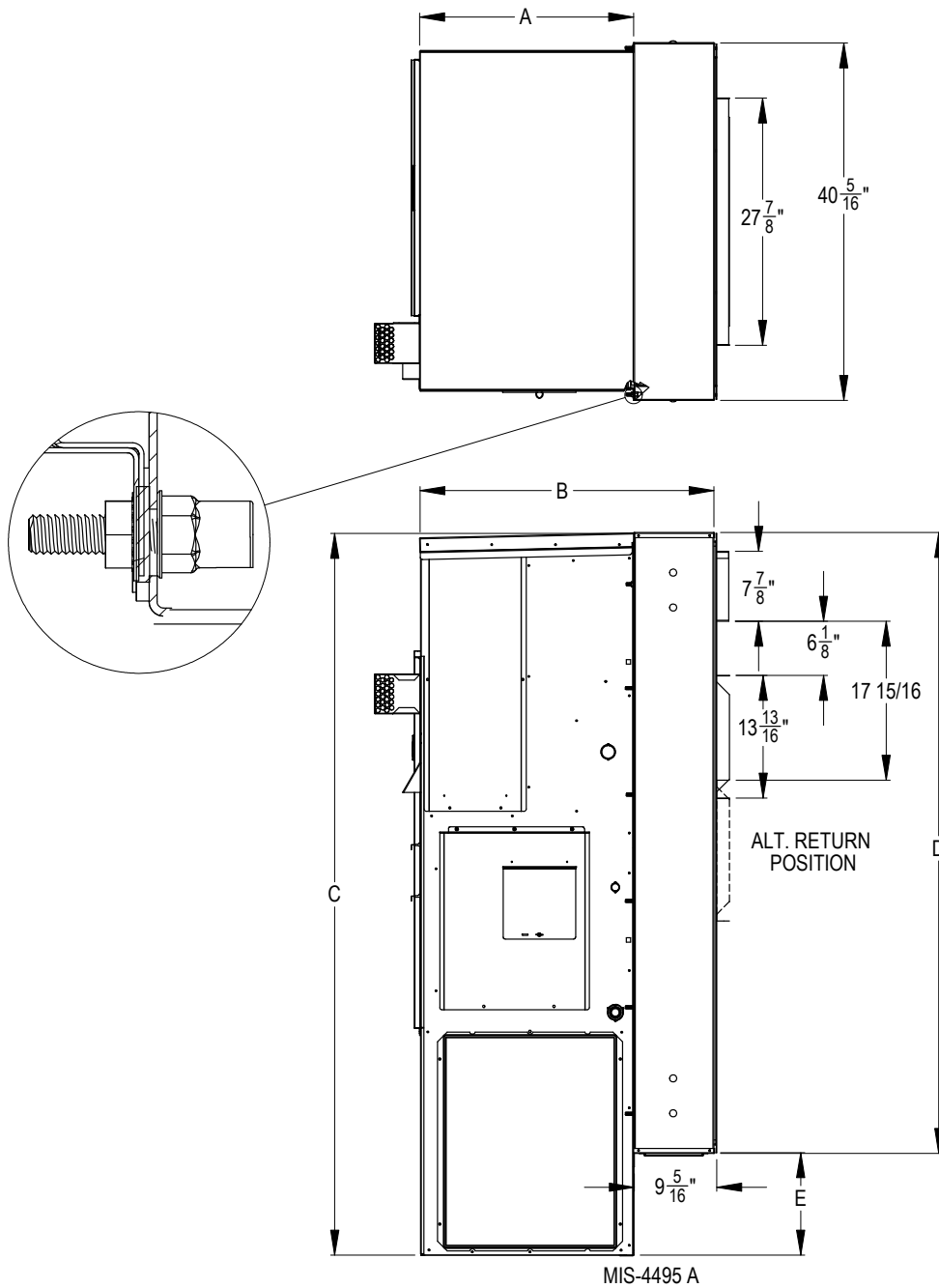
Wall Curb Application Guide

Use the chart below and Figures 1 thru 8 on pages 4 thru 11 to review the following: New unit compatibility when using the curb, unit and curb supply and return spacing, supply and return opening sizes for the wall and supply and return opening sizes for the new unit.

Figure*	Curb Model	Unit Model	New Unit Connections			Curb Connections			Application
			Supply	Return	Supply and Return	Supply	Return	Supply and Return	
1	CCURBF2430	W30-36H W30-36A T30H T30S W24-36G	7.88 x 27.88	13.88 x 27.88	17.93	7.88 x 27.88	13.88 x 27.88	6.125 or 17.93	Used to offset the return opening for new construction or replace W18 thru W36 units. WG products require WG4CA3 top adapter panel.
2	CCURBT2430	W30-36H W30-36A T30H T30S	7.88 x 27.88	13.88 x 27.88	17.93	7.88 x 27.88	13.88 x 27.88	17.93	Used to replace W18 thru W36 or other units in a soffit/new construction with a higher supply opening.
3	CCURBF4860	W42-60H W42-72A W*SA C36-60H T36-60H T36-60S W42-60G	9.88 x 29.88	15.88 x 29.88	30.00	9.88 x 29.88	15.88 x 29.88	6.125 or 30.00	Used to offset the return opening for new construction. WG products require WG9CA5 top adapter panel.
4	CCURBT4860	W42-60H W42-72A W*SA C36-60H T36-60H T36-60S	9.88 x 29.88	15.88 x 29.88	30.00	9.88 x 29.88	15.88 x 29.88	30.00	Used to replace units in a soffit/new construction with a higher supply opening.
5	CFCF-32	W30-36H W30-36A T30H T30S	7.88 x 27.88	13.88 x 27.88	17.93	7.88 x 19.88	11.88 x 19.88	20.56	Used to replace W18 thru W24 or same size units with CH or TS products that use a larger cabinet size.
6	CFCT-32	W30-36H W30-36A T30H T30S	7.88 x 27.88	13.88 x 27.88	17.93	7.88 x 19.88	11.88 x 19.88	20.56	Used to replace W18 thru W24 or same size units in a soffit with CH or TS products that use a larger cabinet size.
7	CFCF-53	W42-60H W42-72A W*SA C36-60H T36-60H T36-60S W42-60G	9.88 x 29.88	15.88 x 29.88	30.00	7.88 x 27.88	13.88 x 27.88	17.93	Used to replace W30 thru W36 or other same size units with products that use a larger cabinet size. WG product require WGFCF5 top adapter panel.
8	CFCT-53	W42-60H W42-72 W*SA C36-60H T36-60H T36-60S	9.88 x 29.88	15.88 x 29.88	30.00	7.88 x 27.88	13.88 x 27.88	17.93	Used to replace W30 thru W36 or other same size units with products that use a larger cabinet size.

* See Figures 1-8 on pages 4-11.

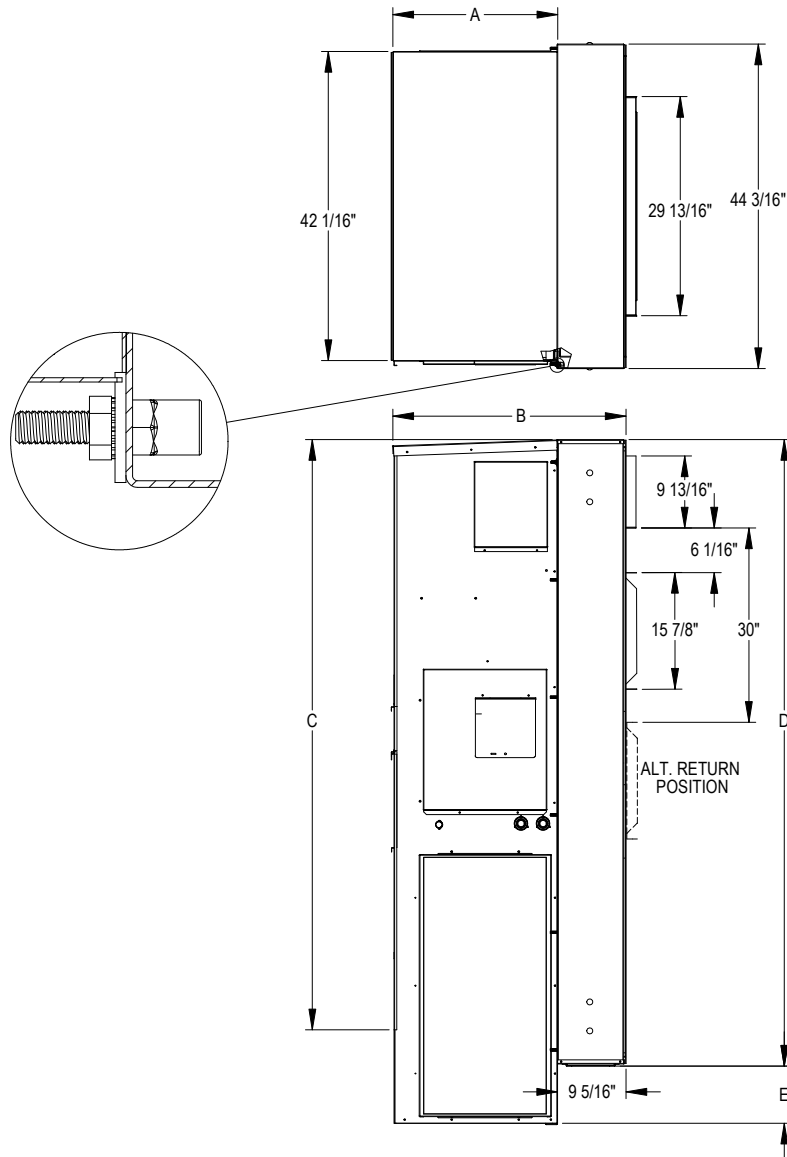
FIGURE 1
Curb Model: CCURBF2430



Model	A Unit Depth	B Unit and Curb Depth	C Unit Height	D Curb Height	E
W30-36H W30-36A	17.13	26.44	74.563	70.31	4.25
W24-36G*	24.25	33.56	81.63	70.81	10.81
T30S T30H	17.13	26.44	70.563	70.31	0.25

* Requires WG9CA3-* adapter panel that replaces curb top. When used, the top of the unit is flush with the top of the curb.

FIGURE 3
Curb Model: CCURBF4860

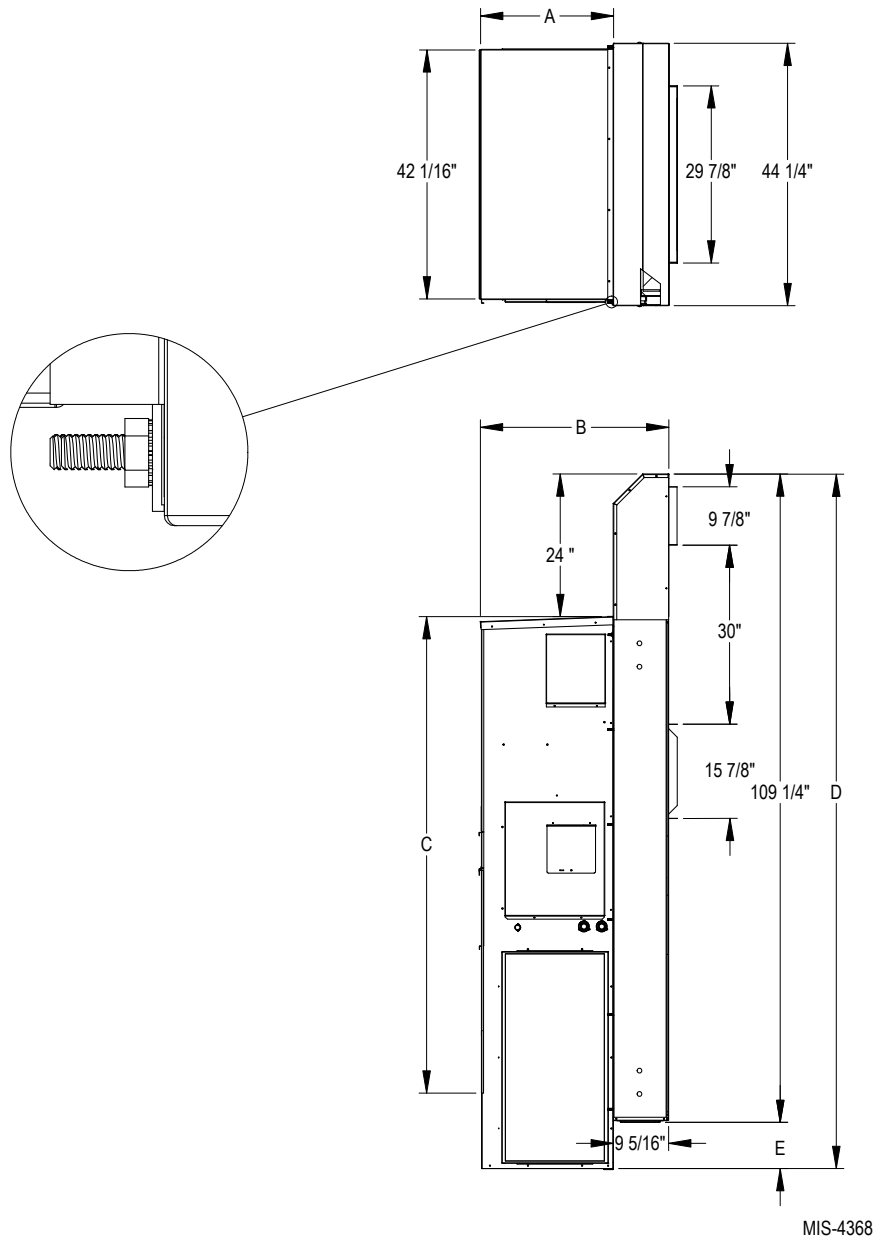


MIS-4367

Model	A Unit Depth	B Unit and Curb Depth	C Unit Height	D Curb Height	E
W42-48H W42-48A W3-4SA C36-42H	25.52	34.83	84.88	85.31	0
W60H W60-72A W5SA C48-60H	25.52	34.83	93	85.31	7.81
T36-42S T36-42H	22.432	31.75	84.88	85.31	0
T48-60S T48-60H	22.432	31.75	93	85.31	7.81
W42-60G*	27.25	36.56	87.5	85.81	1.69

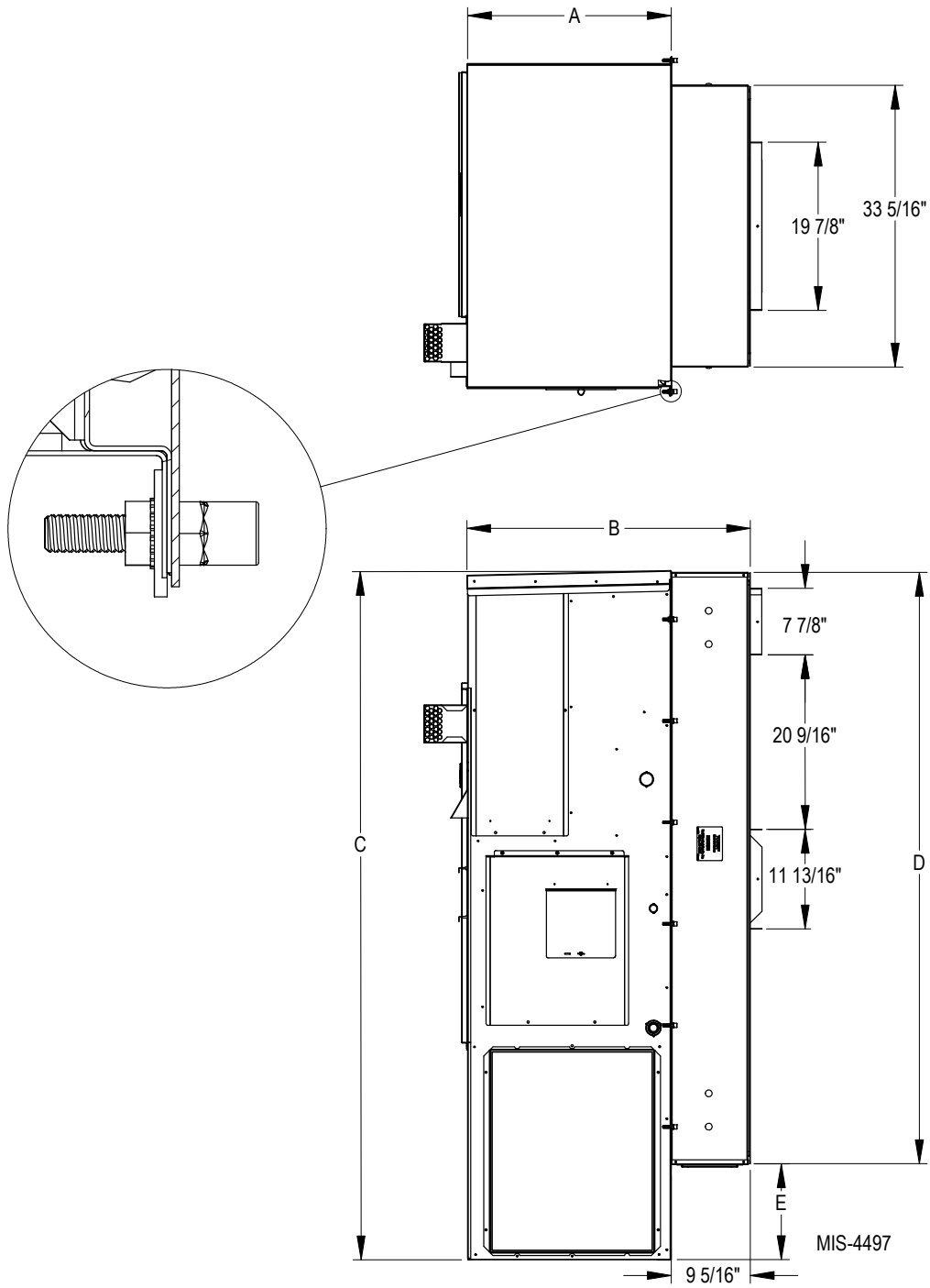
* Requires WG9CA5-* adapter panel that replaces curb top. When used, the top of the unit is flush with the top of the curb.

FIGURE 4
Curb Model: CCURBT4860



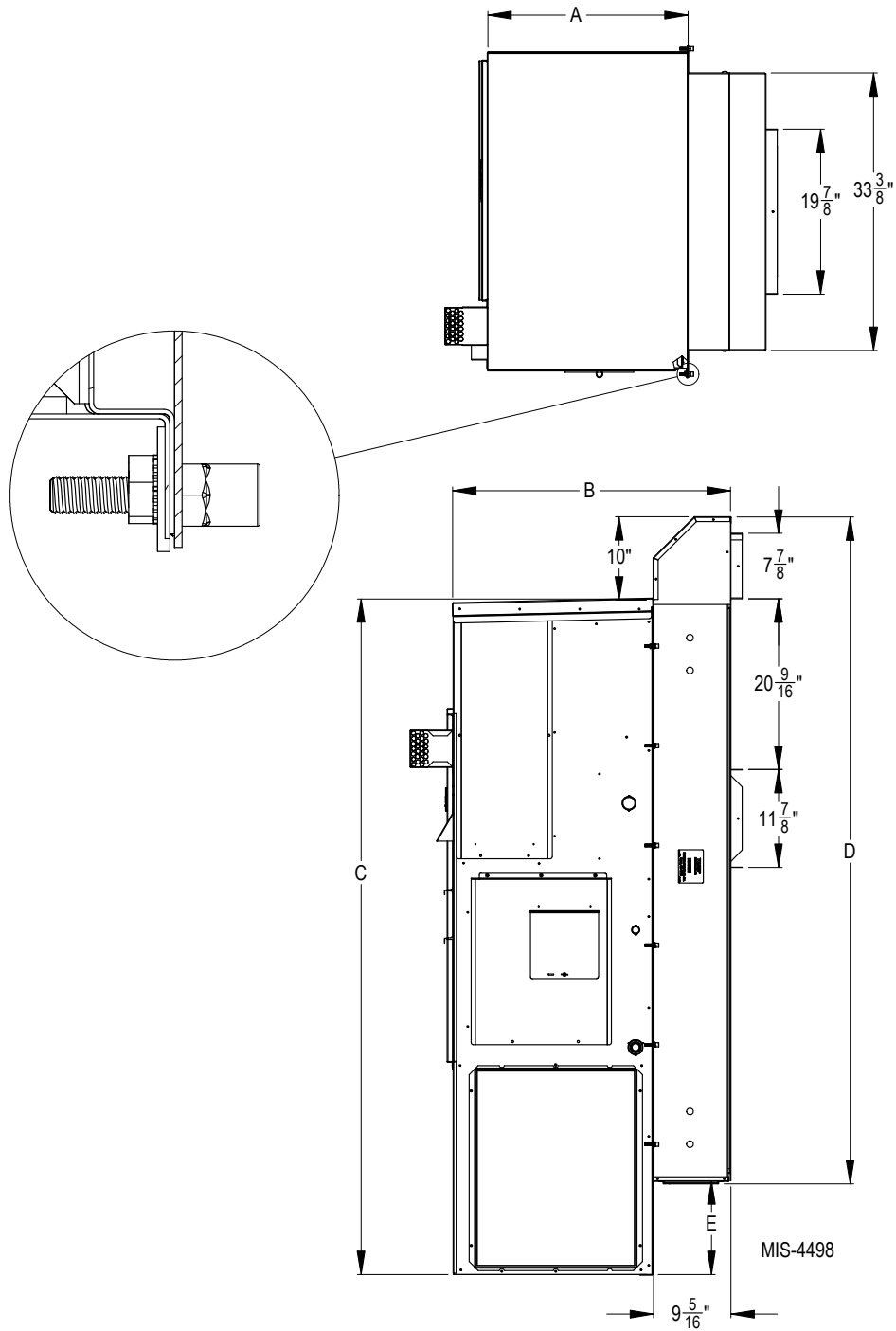
Model	A Unit Depth	B Unit and Curb Depth	C Unit Height	D Curb Height	E
W42-48H W42-48A W3-4SA C36-42H	25.52	34.83	84.88	108.88	0
W60H W60-72A W5SA C48-60H	25.52	34.83	93	117	7.81
T36-42S T36-42H	22.432	31.75	84.88	108.88	0
T48-60S T48-60H	22.432	31.75	93	117	7.81

FIGURE 5
Curb Model: CFCF-32



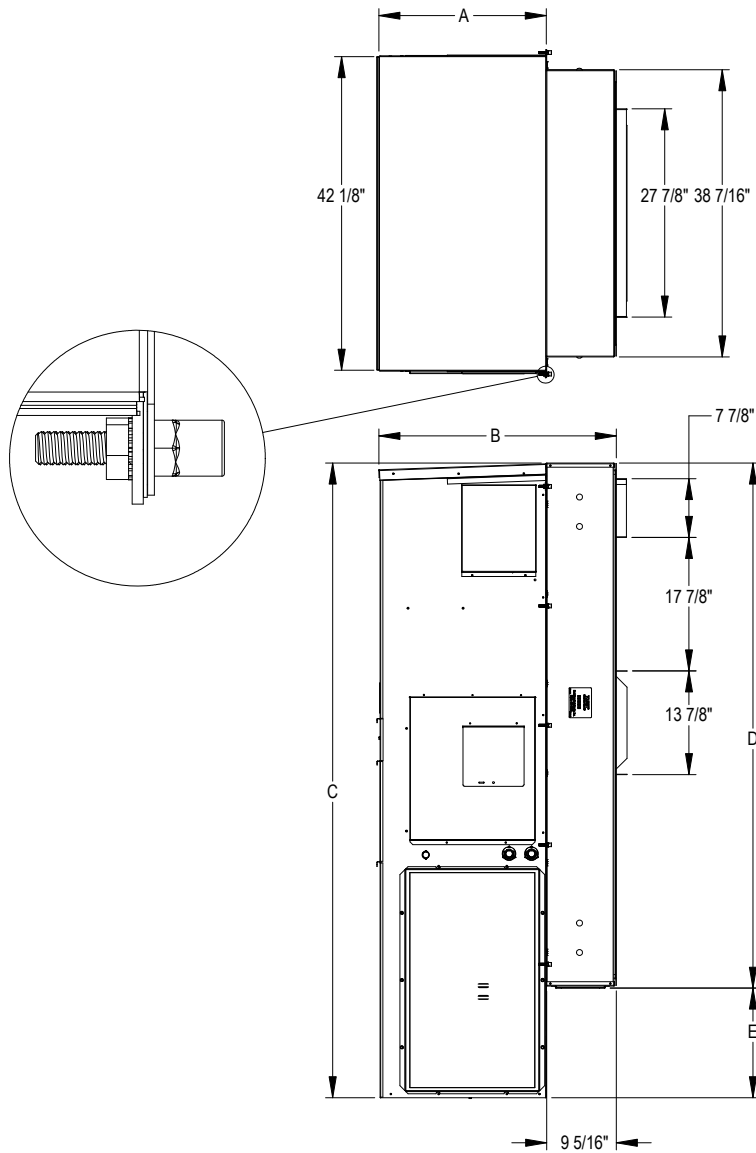
Model	A Unit Depth	B Unit and Curb Depth	C Unit Height	D Curb Height	E
W30-36H W30-36A	17.13	26.44	74.563	70.375	4.19
T30S T30H	17.13	26.44	70.563	70.375	0.188

FIGURE 6
Curb Model: CFCT-32



Model	A Unit Depth	B Unit and Curb Depth	C Unit Height	D Curb Height	E
W30-36H W30-36A	17.13	26.44	74.563	80.31	4.188
T30S T30H	17.13	26.44	70.563	80.31	0.188

FIGURE 7
Curb Model: CFCF-53

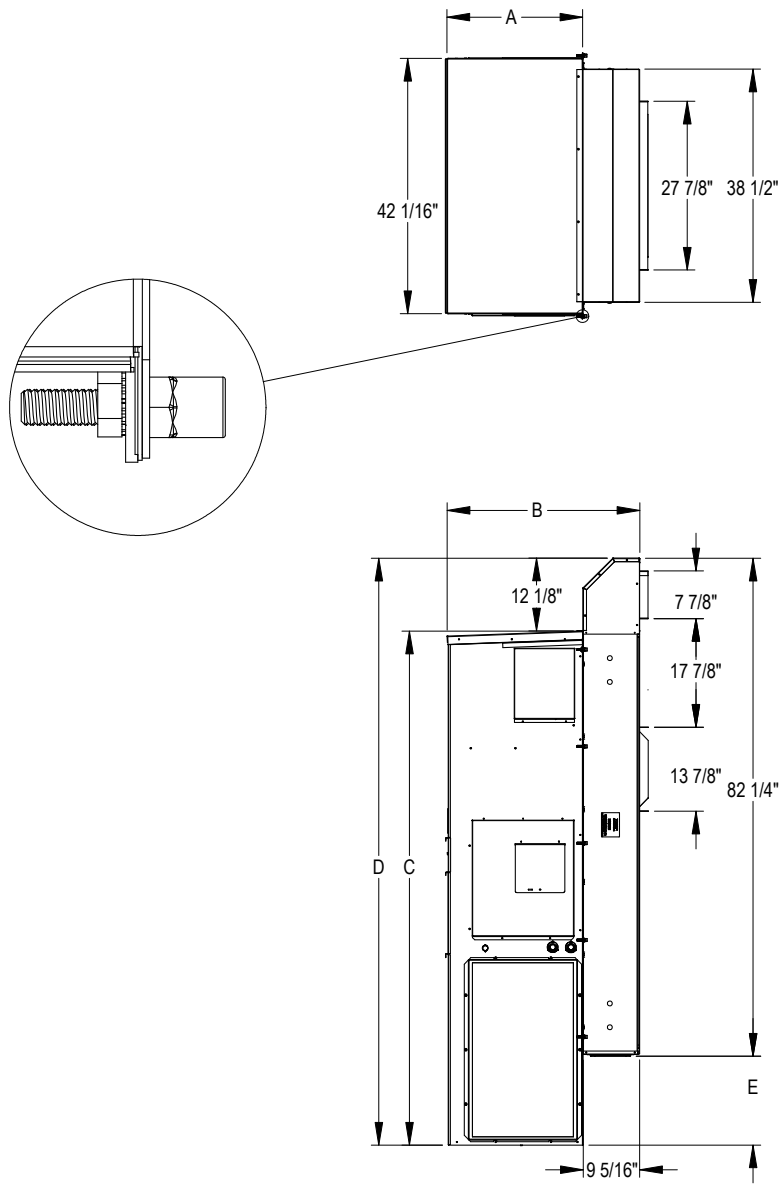


MIS-4369

Model	A Unit Depth	B Unit and Curb Depth	C Unit Height	D Curb Height	E
W42-48H W42-48A W3-4SA C36-42H	25.52	34.83	84.88	70.375	0
W60H W60-72A W5SA C48-60H	25.52	34.83	93	70.375	14.625
T36-42S T36-42H	22.432	31.75	84.88	70.375	0
T48-60S T48-60H	22.432	31.75	93	70.375	14.625
W42-60G	27.25	36.56	87.5	70.88	16.85

* Requires WGFCF5-* adapter panel that replaces curb top. When used, the top of the unit is flush with the top of the curb.

FIGURE 8
Curb Model: CFCT-53



MIS-4370

Model	A Unit Depth	B Unit and Curb Depth	C Unit Height	D Curb Height	E
W42-48H W42-48A W3-4SA C36-42H	25.52	34.83	84.88	97	0
W60H W60-72A W5SA C48-60H	25.52	34.83	93	105.125	14.625
T36-42S T36-42H	22.432	31.75	84.88	97	0
T48-60S T48-60H	22.432	31.75	93	105.125	14.625

Installation

CCURBF and CCURBT

1. Frame the wall in accordance with these installation instructions. See Figures 10-16.
2. Remove the packaging from the curb but leave attached to the skid for now.
- 3A. **CCURBF2430 models only:** Measure the distance between the SA (supply air) and RA (return air) opening in the wall and verify the curb has the correct back orientation for the wall. The curbs come out of the box set up for nominal 6" spacing between SA and RA. To convert to nominal 18" spacing, remove the RA panel from the back, rotate the RA panel 180° and place into position covering the lower open area. There should now be nominal 18" spacing between the SA and RA openings. Once verified, replace all screws securing the RA panel into place (see Figure 9A).
- 3B. **CCURBF4860 models only:** Measure the distance between the SA (supply air) and RA (return air) opening in the wall and verify the curb has the correct back orientation for the wall. The CCURBF curbs come out of the box set up for nominal 6" spacing between SA and RA. To convert to nominal 30" spacing, remove the solid panel and RA panels from the back, move the solid panel up and attach to the bottom of the SA panel. Rotate the RA panel 180° and place into position covering the lower open area. There should now be nominal 30" spacing between the SA and RA openings. Once verified, replace all screws securing the RA panel into place (see Figure 9B).
4. Remove curb from skid and lay flat on the back on the ground or on saw horses.
5. Remove the four (4) bolts and lock washers holding the outer curb to the inner curb (see Figure 17).

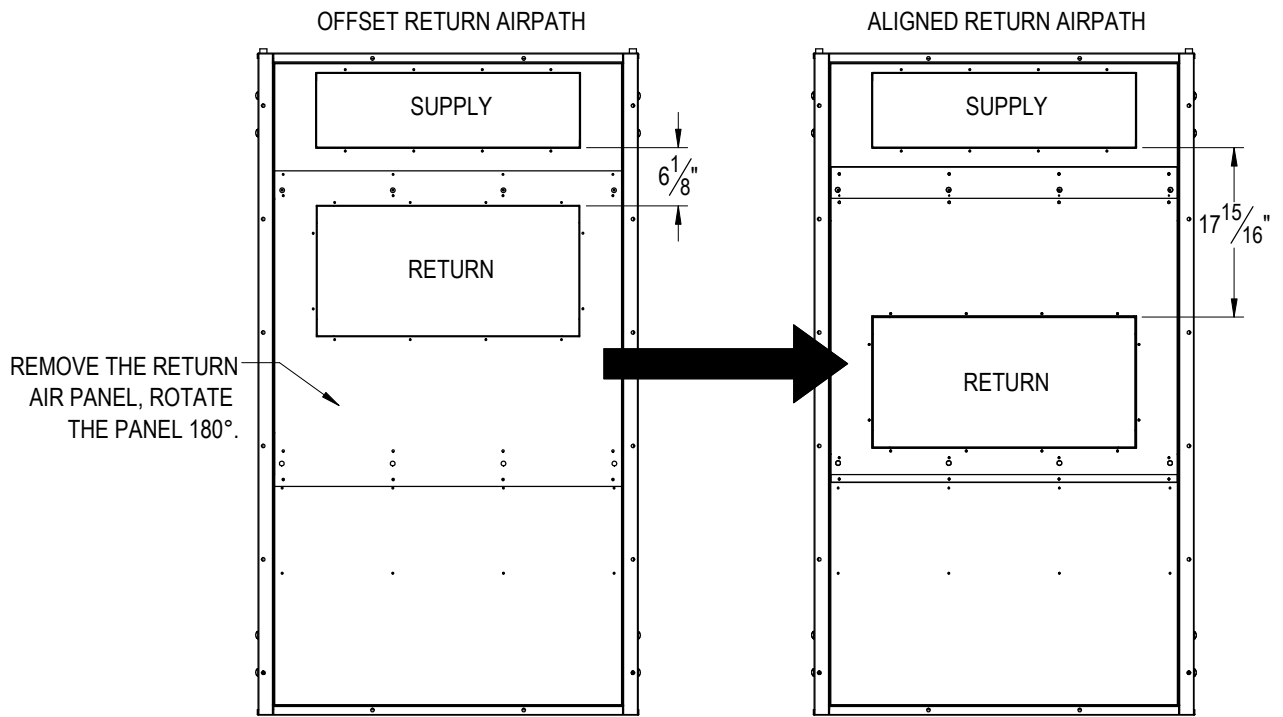
NOTE: On CCURBT versions, leave the upper support angle on the outer curb at this time.

6. Slide the outer curb off of the inner curb and set aside.
7. **CCURBT models only:** Mount the top outlet box to the inner curb using the screws provided (see Figure 18).
8. On the rear of the mounting flange on the inner curb, apply a liberal amount of silicone caulk. Then mount the inner curb to the wall using field-provided lag bolts. Be sure to center the supply and return flanges of the back in the wall openings. Verify the curb is square (see Figure 17 or 18).
9. Slide the outer curb back over the inner curb and reattach using the four (4) bolts and lock washers removed in Step 5. **CCURBT models only:** The outer curb sides must slide under the top outlet box sides.

NOTE: The outer curb will need to be compressed slightly to get the bolts started. Clamps or pliers may be needed to compress the rear seal to align the bolt holes. It is necessary for the seal to be under compression so when the wall mount is installed, adequate weather sealing is maintained.

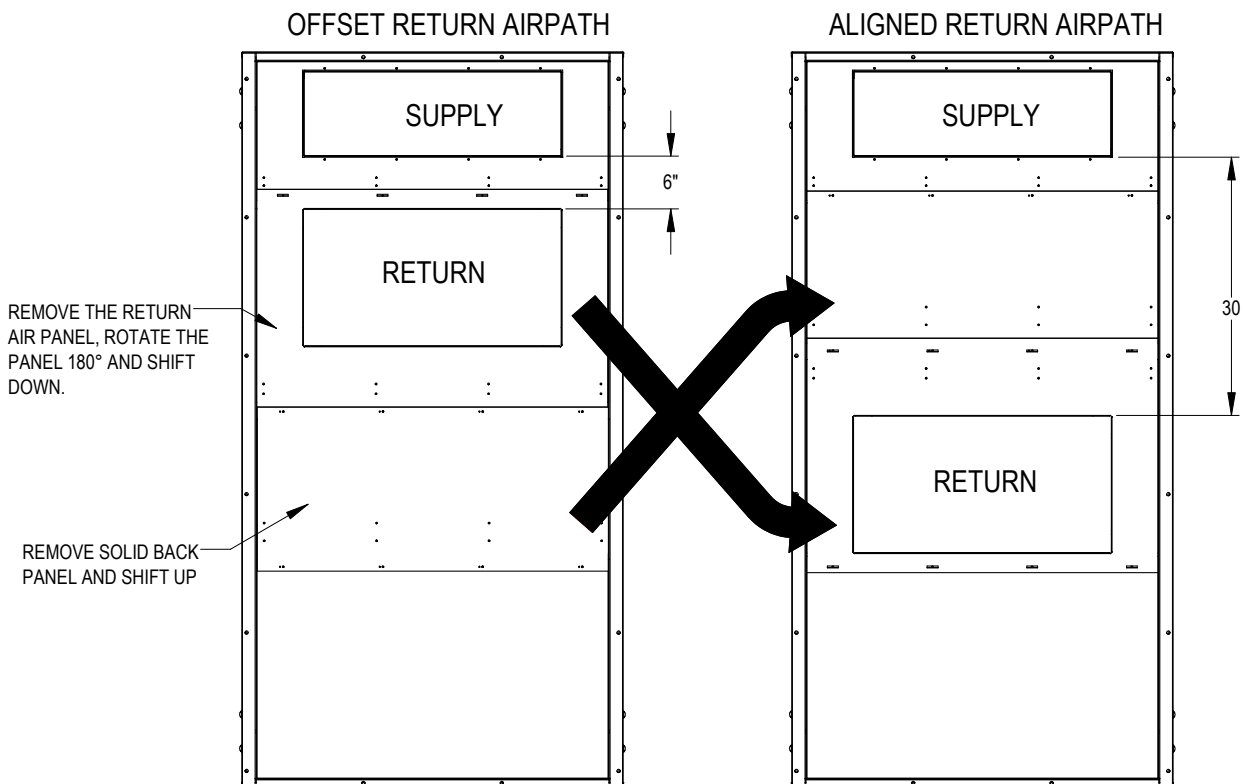
10. **CCURBT models only:** Remove the upper support angle from the outer curb.
11. Raise the unit to the curb with a suitable lift and engage the top of the unit to the curb first by slightly tipping the unit toward the curb. On top outlet curbs, ensure the unit is underneath the lip on the top outlet box. Caulk may be applied under the lip of the top outlet box if desired.
12. Engage nuts and washers (supplied) loosely to the top two (2) bolts in the curb to help keep the top of the unit in position. Pivot the unit down to engage the remainder of the bolts and fasten securely to the curb with nuts and washers (supplied).
13. Apply a liberal amount of caulk across the top seam of the curb where it meets the unit or top outlet box. Also apply caulk where the curb or top outlet box meets the wall (see Figures 24A or 24B).
14. Connect power wires and thermostat wires to the unit. Use flexible conduit to maintain vibration isolation. Use of rigid conduit is not recommended and could cancel the benefits of the curb.
15. Connect ductwork per standard practices.

FIGURE 9A
CCURBF2430 Rotating Back Panels



MIS-4502

FIGURE 9B
CCURBF4860 Rotating Back Panels



MIS-4371

FIGURE 10
Wall Mounting Instructions

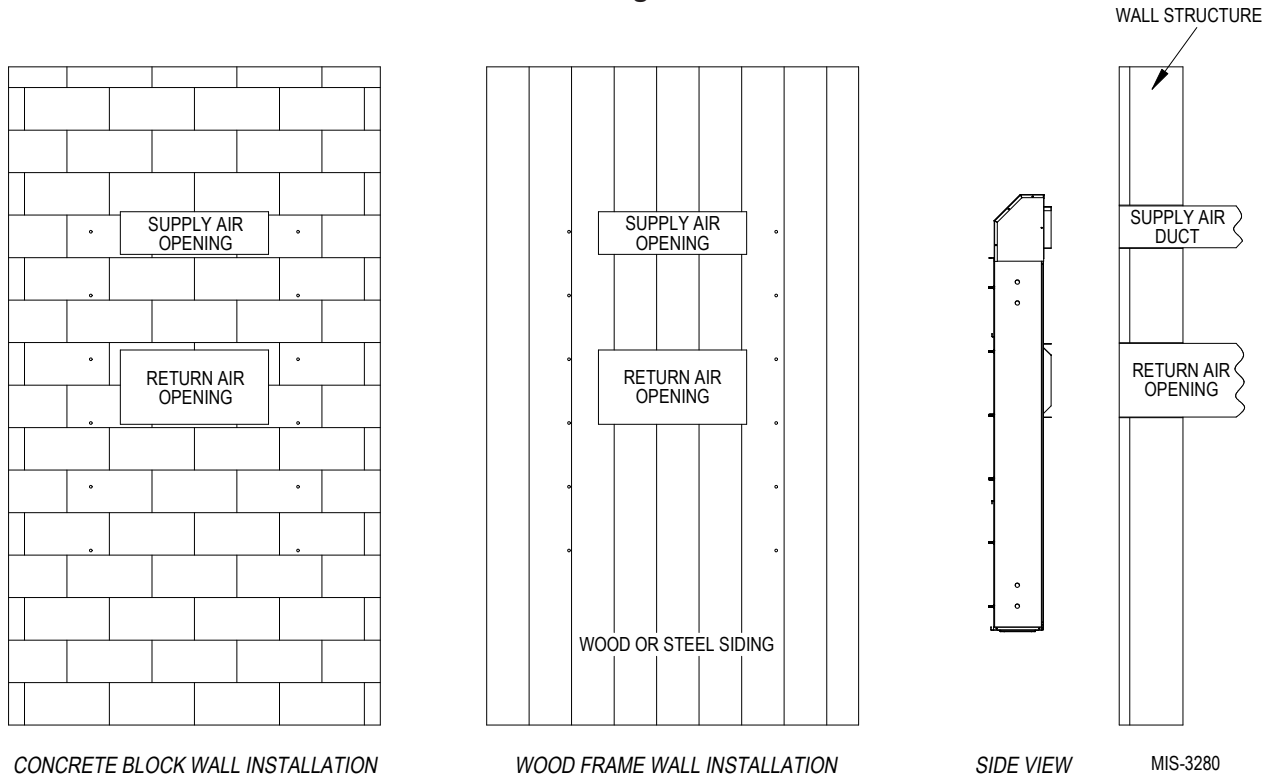


FIGURE 11
Wall Mounting Instructions

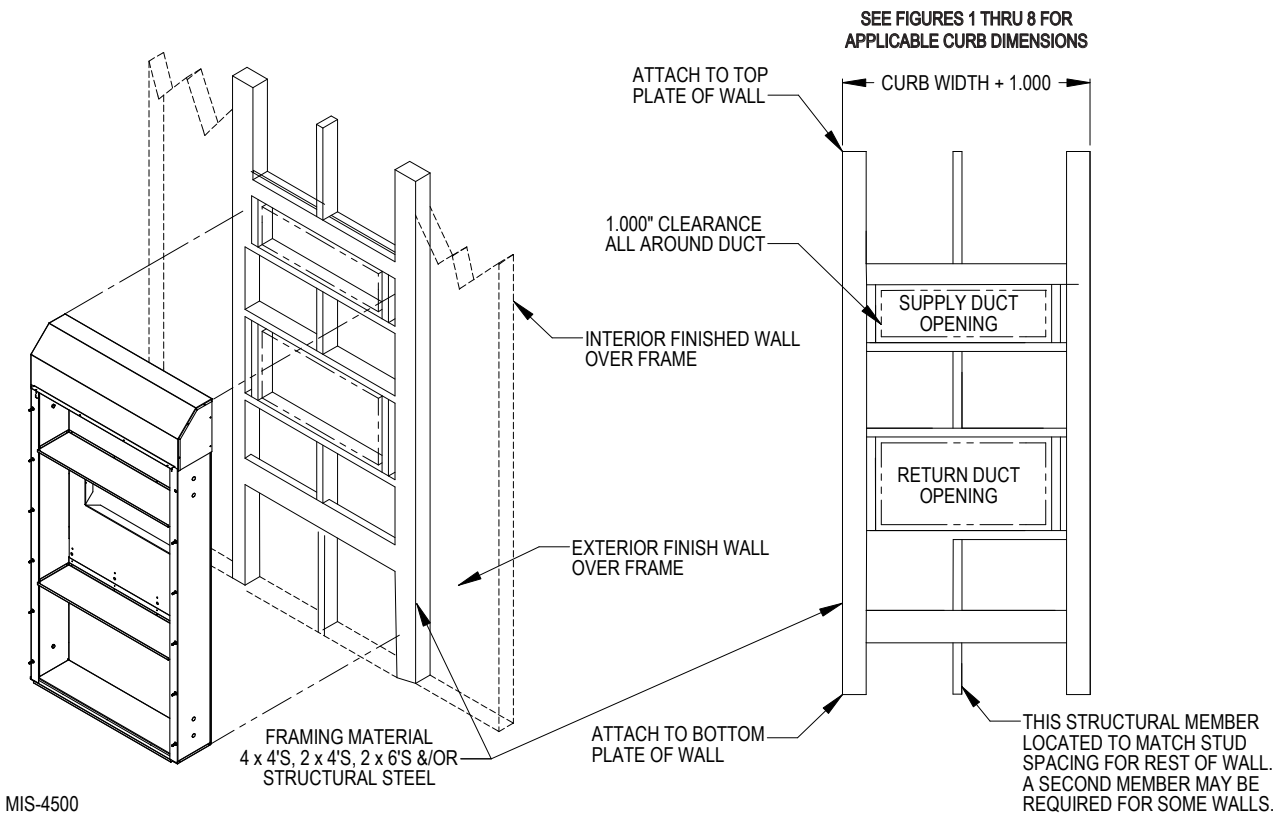
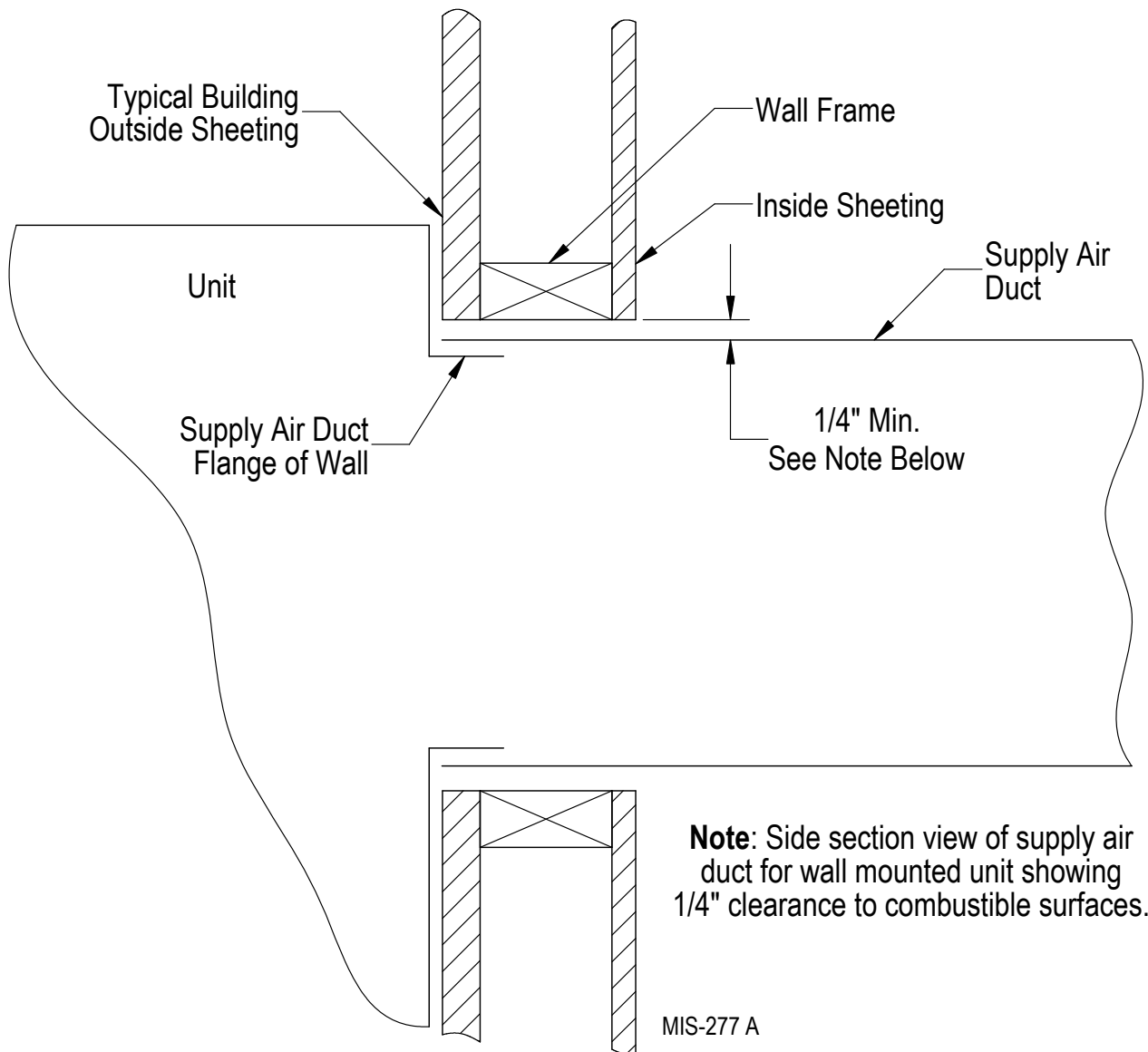


FIGURE 12
Electric Heat Clearance



WARNING

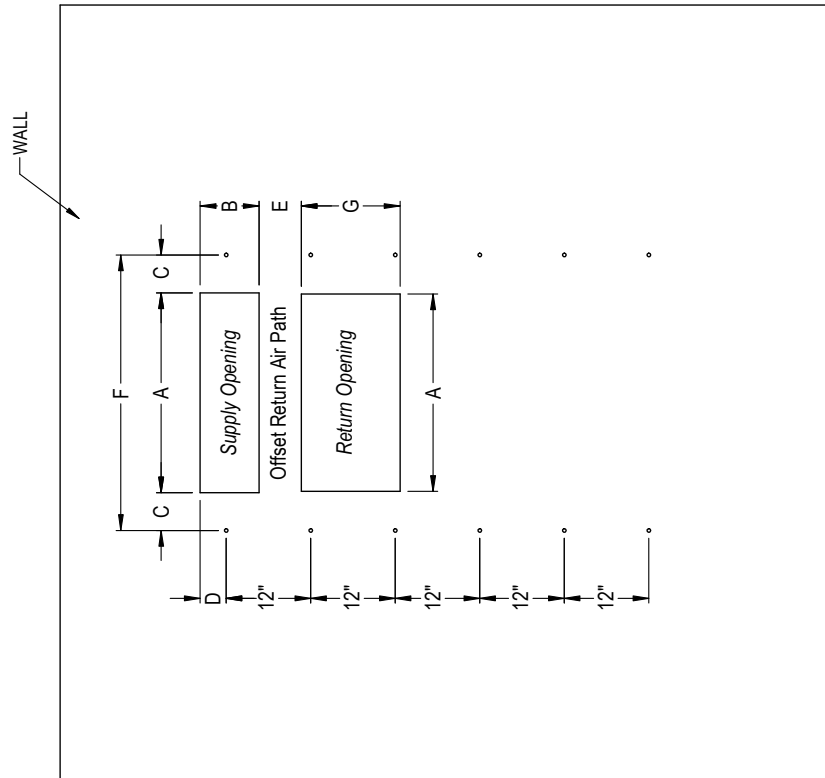
A **minimum** of 1/4" clearance must be maintained between the supply air duct and combustible materials. This is required for the first 3' of ducting.

It is important to ensure that the 1/4" minimum spacing is maintained at all points.

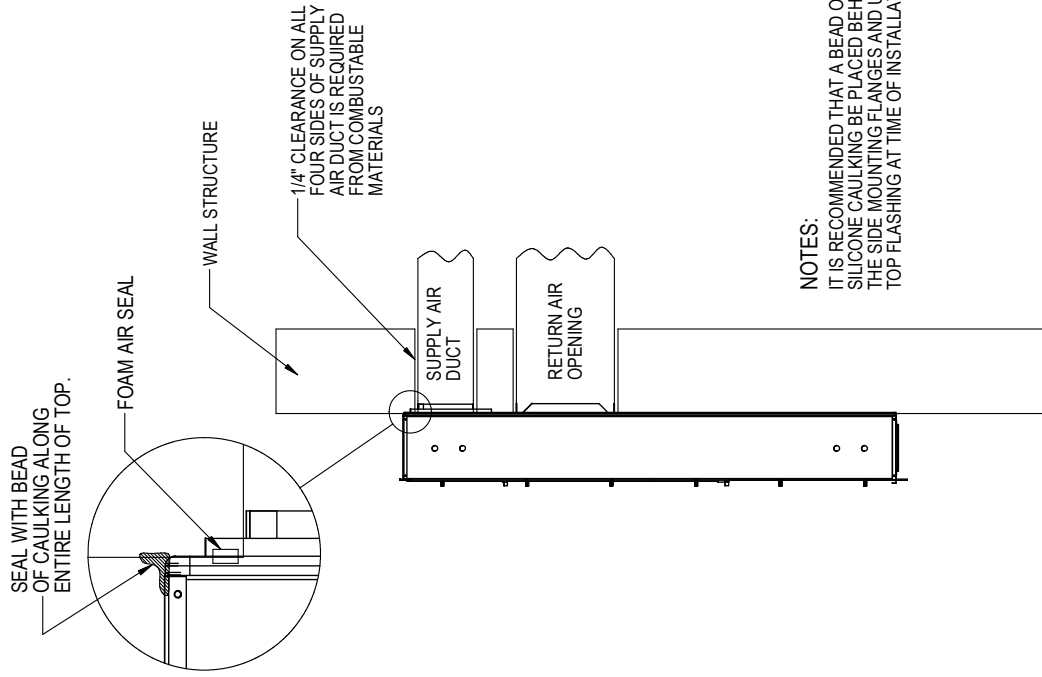
Failure to do this could result in overheating the combustible material and may result in a fire causing damage, injury or death.

FIGURE 13
CCURBF2430
Supply and Return Openings

	A	B	C	D	E	F	G
REQUIRED DIMENSIONS TO MAINTAIN 1/4" MIN. CLEARANCE FROM COMBUSTIBLE MATERIALS	28 3/8	8 3/8	5 3/8	3 11/16	5 3/4	39 1/8	14
REQUIRED DIMENSIONS TO MAINTAIN RECOMMENDED 1" CLEARANCE FROM COMBUSTIBLE MATERIALS	29 7/8	9 7/8	4 5/8	4 7/16	5	39 1/8	14



Wall Opening and Hole Location View



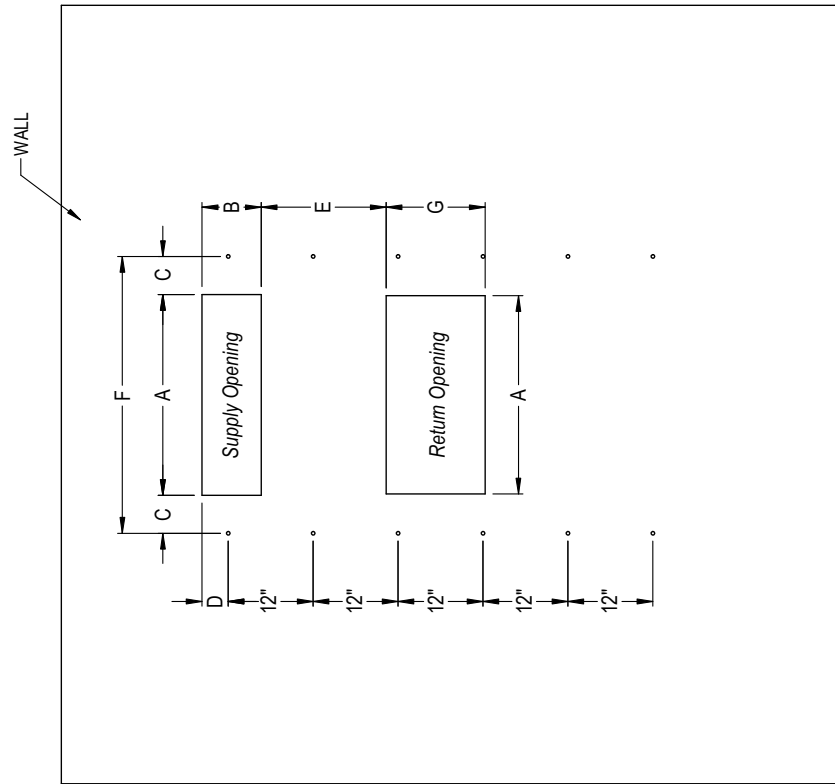
NOTES:
 IT IS RECOMMENDED THAT A BEAD OF SILICONE CAULKING BE PLACED BEHIND THE SIDE MOUNTING FLANGES AND UNDER TOP FLASHING AT TIME OF INSTALLATION.

Right Side View

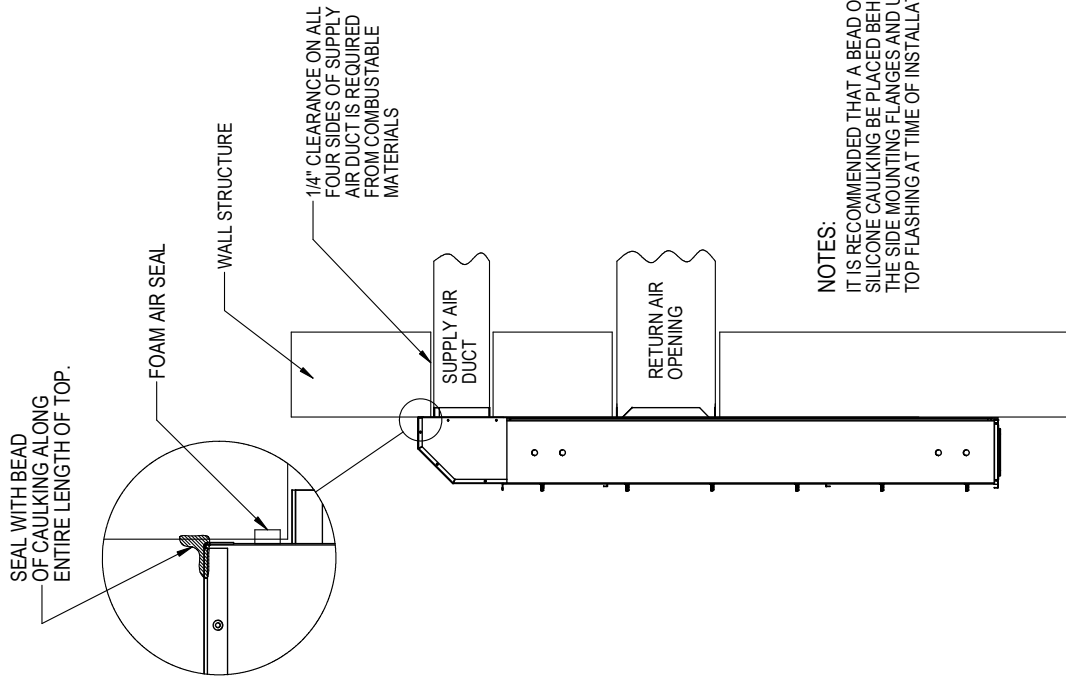
MIS-3276 B

FIGURE 14
CCURBT2430
Supply and Return Openings

	A	B	C	D	E	F	G
REQUIRED DIMENSIONS TO MAINTAIN 1/4" MIN. CLEARANCE FROM COMBUSTIBLE MATERIALS	28 3/8	8 3/8	5 3/8	3 11/16	17 5/8	39 1/8	14
REQUIRED DIMENSIONS TO MAINTAIN RECOMMENDED 1" CLEARANCE FROM COMBUSTIBLE MATERIALS	29 7/8	9 7/8	4 5/8	4 7/16	16 7/8	39 1/8	14



Wall Opening and Hole Location View



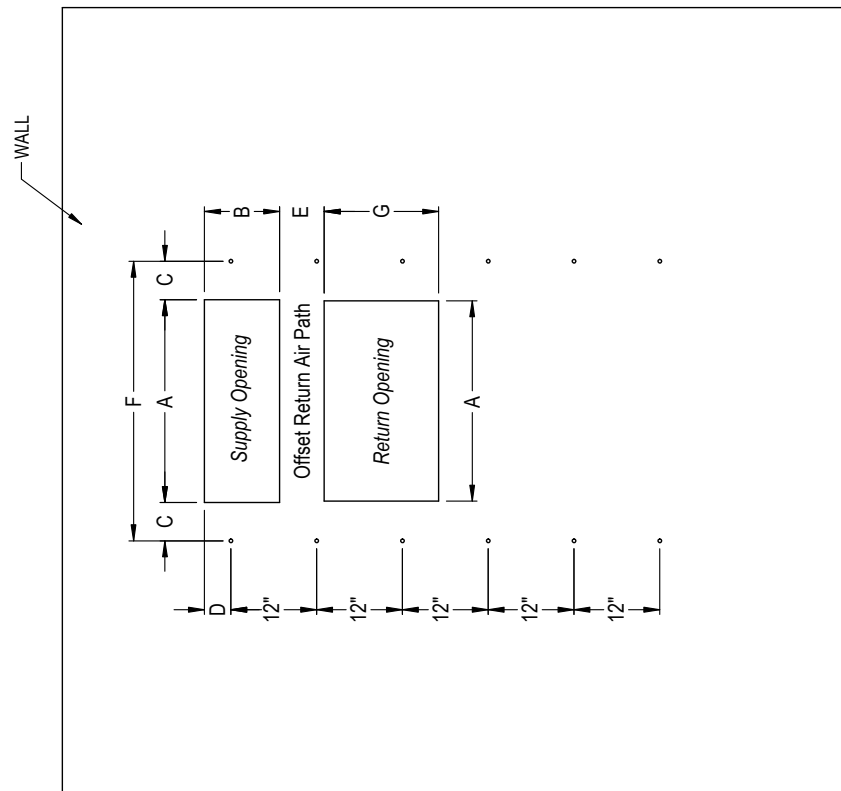
NOTES:
 IT IS RECOMMENDED THAT A BEAD OF SILICONE CAULKING BE PLACED BEHIND THE SIDE MOUNTING FLANGES AND UNDER TOP FLASHING AT TIME OF INSTALLATION.

Right Side View

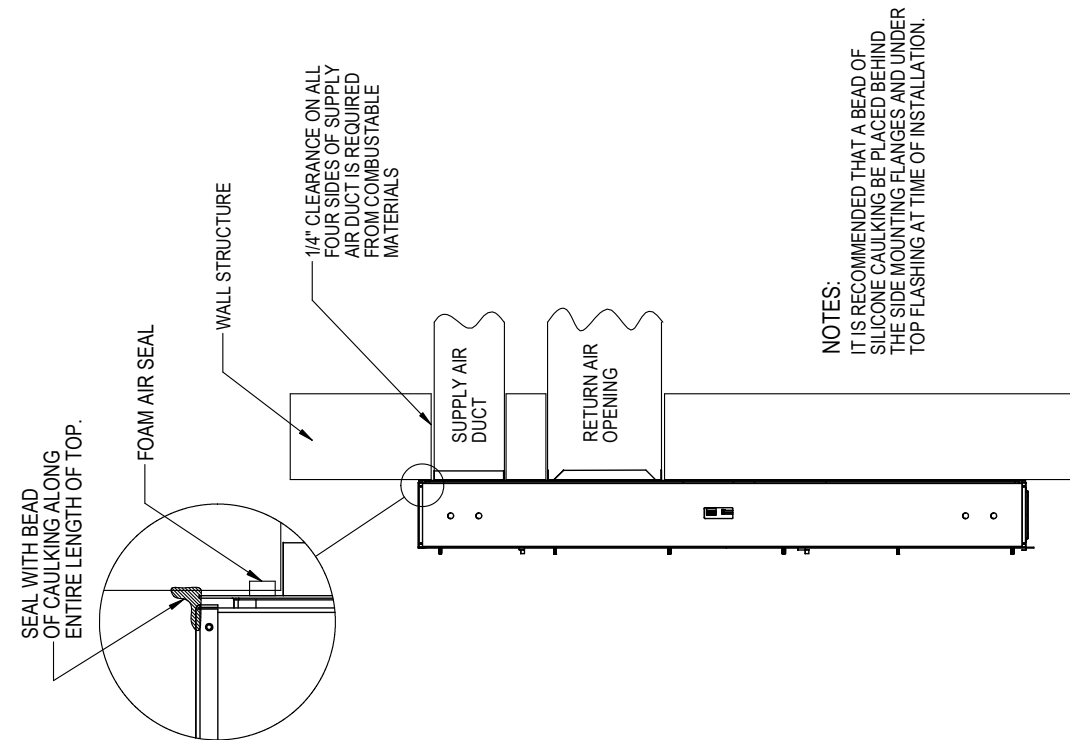
MIS-3277 B

FIGURE 15
CCURBF4860 Supply and Return Openings

	A	B	C	D	E	F	G
REQUIRED DIMENSIONS TO MAINTAIN 1/4" MIN. CLEARANCE FROM COMBUSTIBLE MATERIALS	30 1/2	10 1/2	6 1/4	1 1/4	5 3/4	43	16
REQUIRED DIMENSIONS TO MAINTAIN RECOMMENDED 1" CLEARANCE FROM COMBUSTIBLE MATERIALS	32	12	5 1/2	2	5	43	16



Wall Opening and Hole Location View

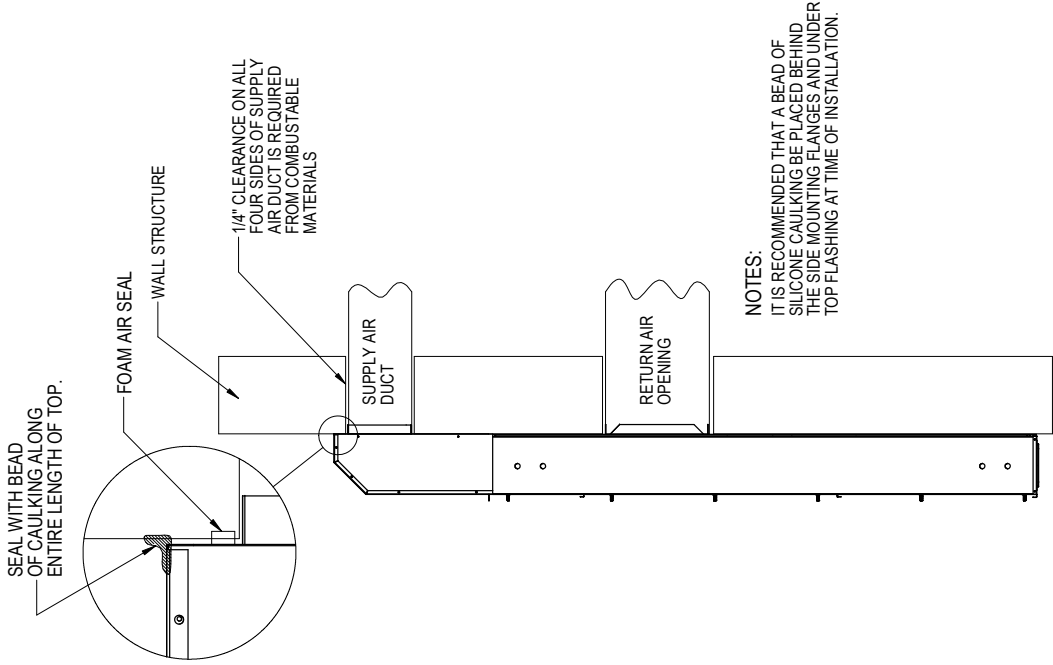


NOTES:
IT IS RECOMMENDED THAT A BEAD OF SILICONE CAULKING BE PLACED BEHIND THE SIDE MOUNTING FLANGES AND UNDER TOP FLASHING AT TIME OF INSTALLATION.

Right Side View

MIS-3279 B

FIGURE 16
CCURBT4860 Supply and Return Openings

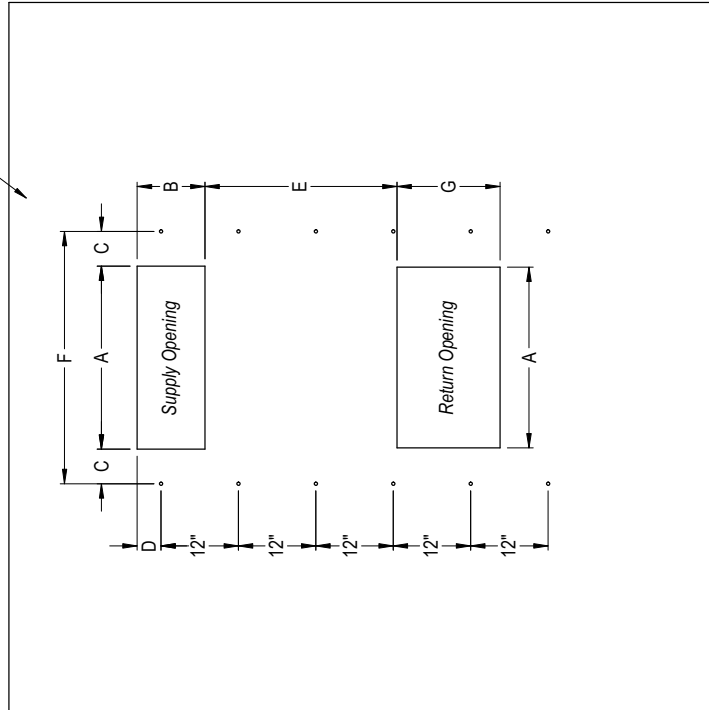


NOTES:
 IT IS RECOMMENDED THAT A BEAD OF SILICONE CAULKING BE PLACED BEHIND THE SIDE MOUNTING FLANGES AND UNDER TOP FLASHING AT TIME OF INSTALLATION.

Right Side View

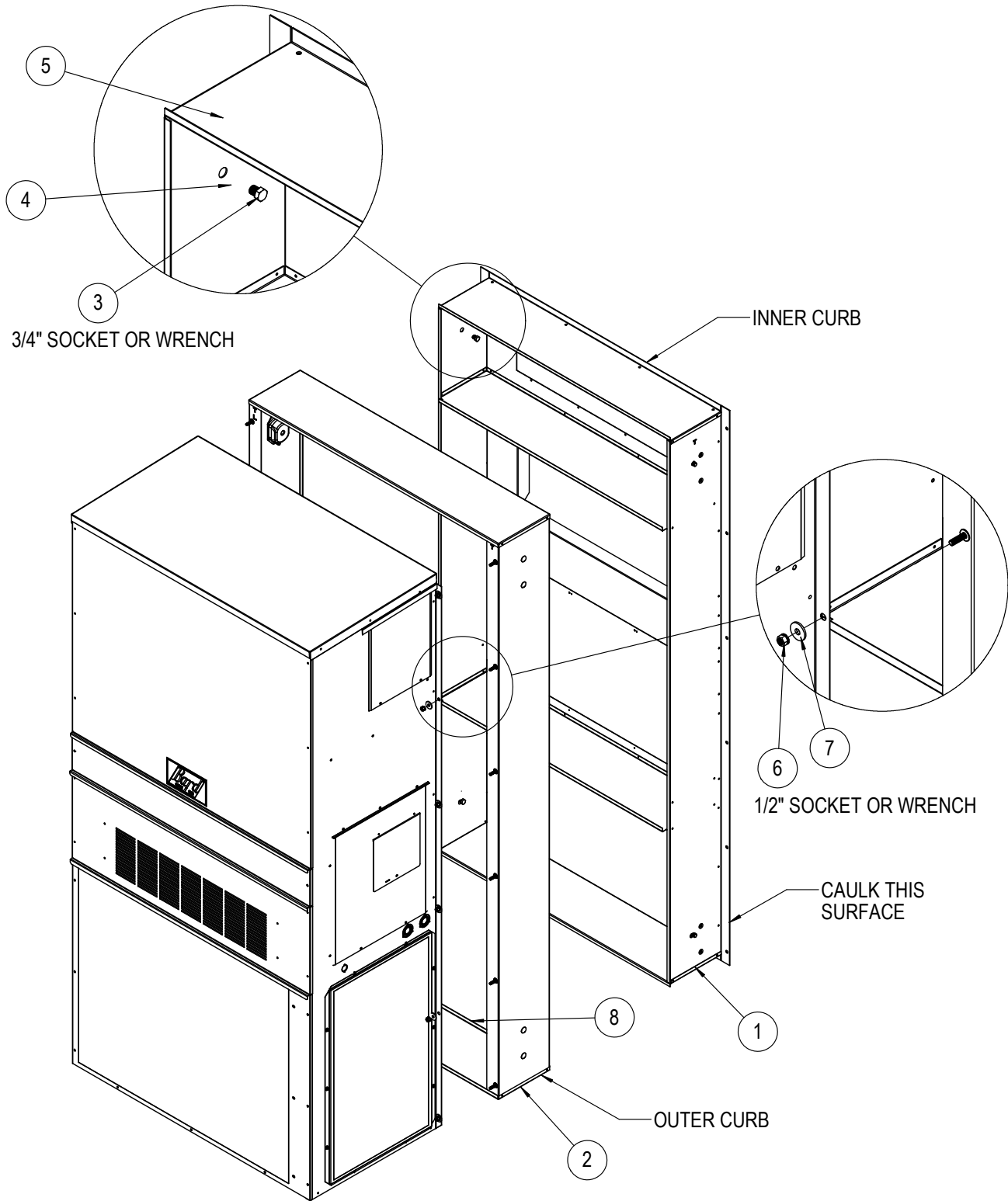
	A	B	C	D	E	F	G
REQUIRED DIMENSIONS TO MAINTAIN 1/4" MIN. CLEARANCE FROM COMBUSTIBLE MATERIALS	30 1/2	10 1/2	6 1/4	1 1/4	29 3/4	43	16
REQUIRED DIMENSIONS TO MAINTAIN RECOMMENDED 1" CLEARANCE FROM COMBUSTIBLE MATERIALS	32	12	5 1/2	2	29	43	16

WALL



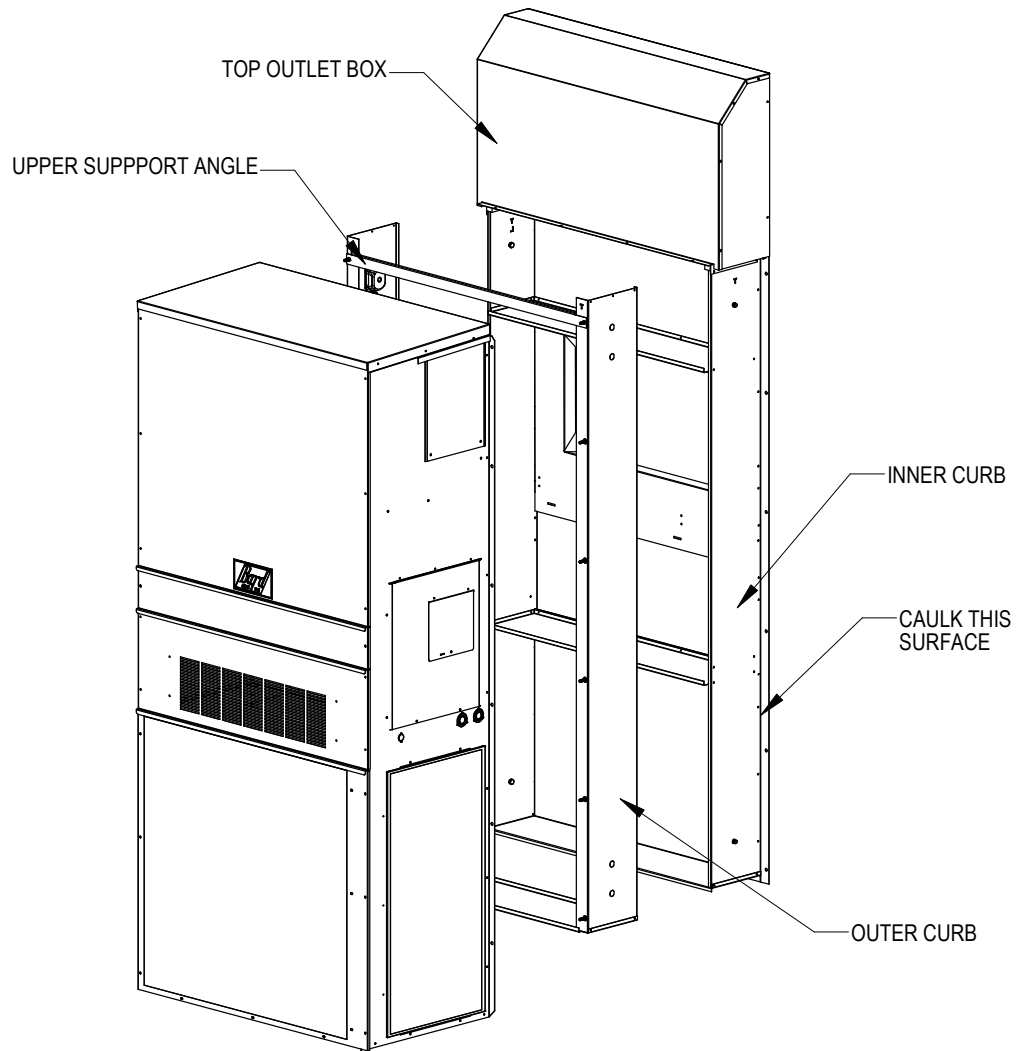
Wall Opening and Hole Location View

FIGURE 17
CCURBF Fastening Unit to Curb



MIS-3086 A

FIGURE 18
CCURBT Fastening Unit to Curb



MIS-4501

CFCF-32, CFCT-32, CFCF-53, CFCT-53 Retrofit installations

1. Disconnect the electrical entrance and thermostat wires from the old unit.
2. Disconnect the duct work as required from the old unit.
3. Supporting the unit, remove the mechanical fasteners retaining the wall mount unit to the structure, then lower the unit and move it off to the side.
4. Remove and discard bottom mounting bracket for wall mount.
5. Remove the packaging from the curb, but leave attached to the skid for now.
6. Verify that the wall is structurally sound. Make sure the new curb mounting holes will allow lag screws or other fastening devices to be inserted into supporting wall structure.
7. Measure the distance between the supply and return opening in the wall and verify the curb has the correct back orientation for the wall (see Figures 20 thru 23).
8. Remove curb from skid.
9. On the rear of the mounting flange on the inner curb, apply a liberal amount of silicone caulk. Then mount the inner curb to the wall using field-provided lag bolts. Be sure to center the supply and return flanges of the back in the wall openings. Verify the curb is square (see Figure 19).

NOTE: *The rubber plugs installed in the outer curb side flanges can be removed for lag hole access. Use a long drill driver extension (12") to reach lag holes.*

10. Raise the unit to the curb with a suitable lift and engage the top of the unit to the curb first by slightly tipping the unit toward the curb. On top outlet curbs, ensure the unit is underneath the lip on the top outlet box. Caulk may be applied under the lip of the top outlet box if desired.
11. Engage nuts and washers (supplied) loosely to the top two (2) bolts in the curb to help keep the top of the unit in position. Pivot unit down to engage the remainder of the bolts and fasten securely to curb with nuts and washers (supplied). See Figure 19.
12. Apply a liberal amount of caulk across the top seam of the curb where it meets the unit or top outlet box. Also apply caulk where the curb or top box meet the wall (see Figures 24A or 24B).
13. Connect power wires and thermostat wires to the unit. Use flexible conduit to maintain vibration isolation. Use of rigid conduit is not recommended and could cancel the benefits of the curb.
14. Connect ductwork per standard practices.

FIGURE 19
CFCF and CFCT Mounting Plug Holes

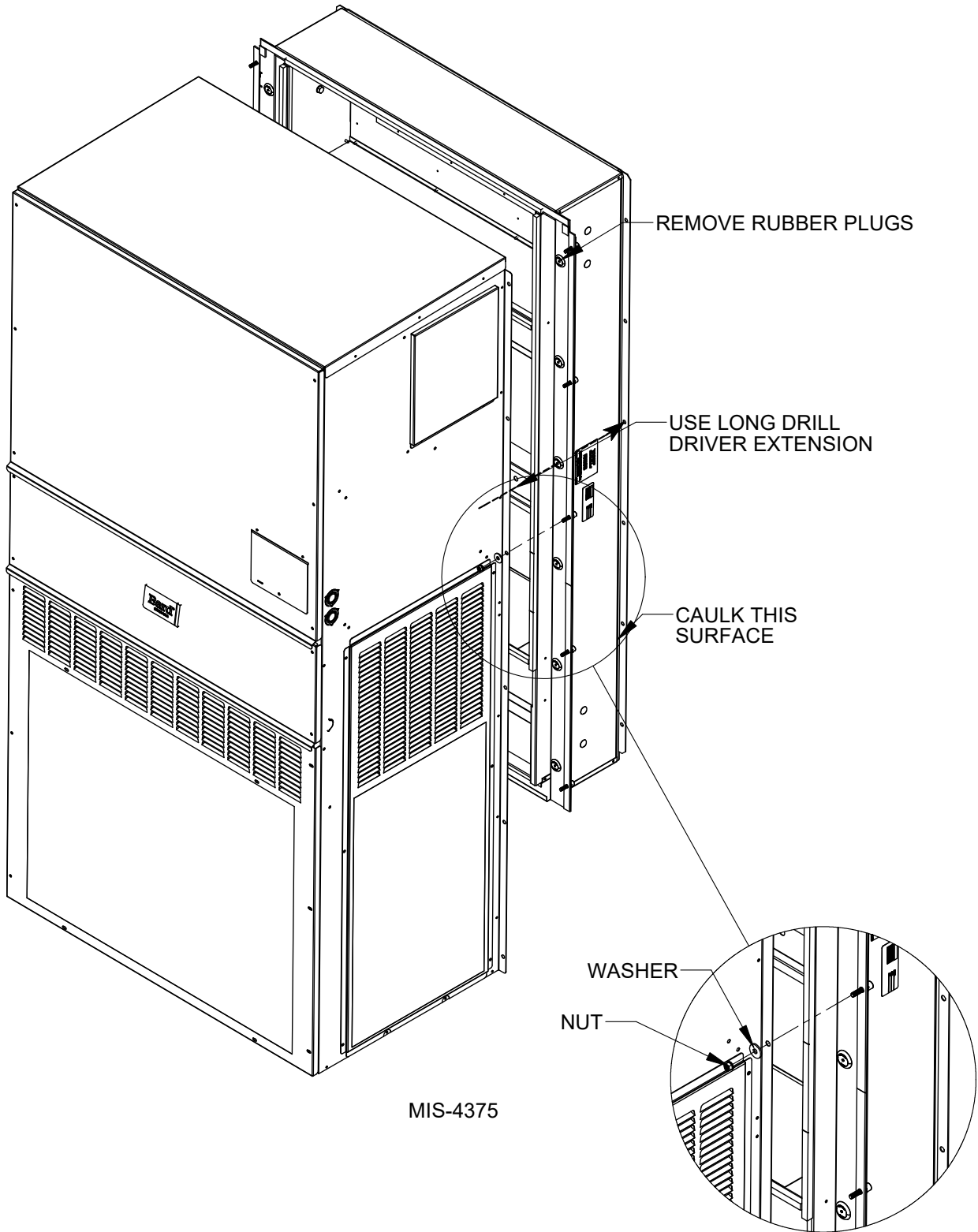
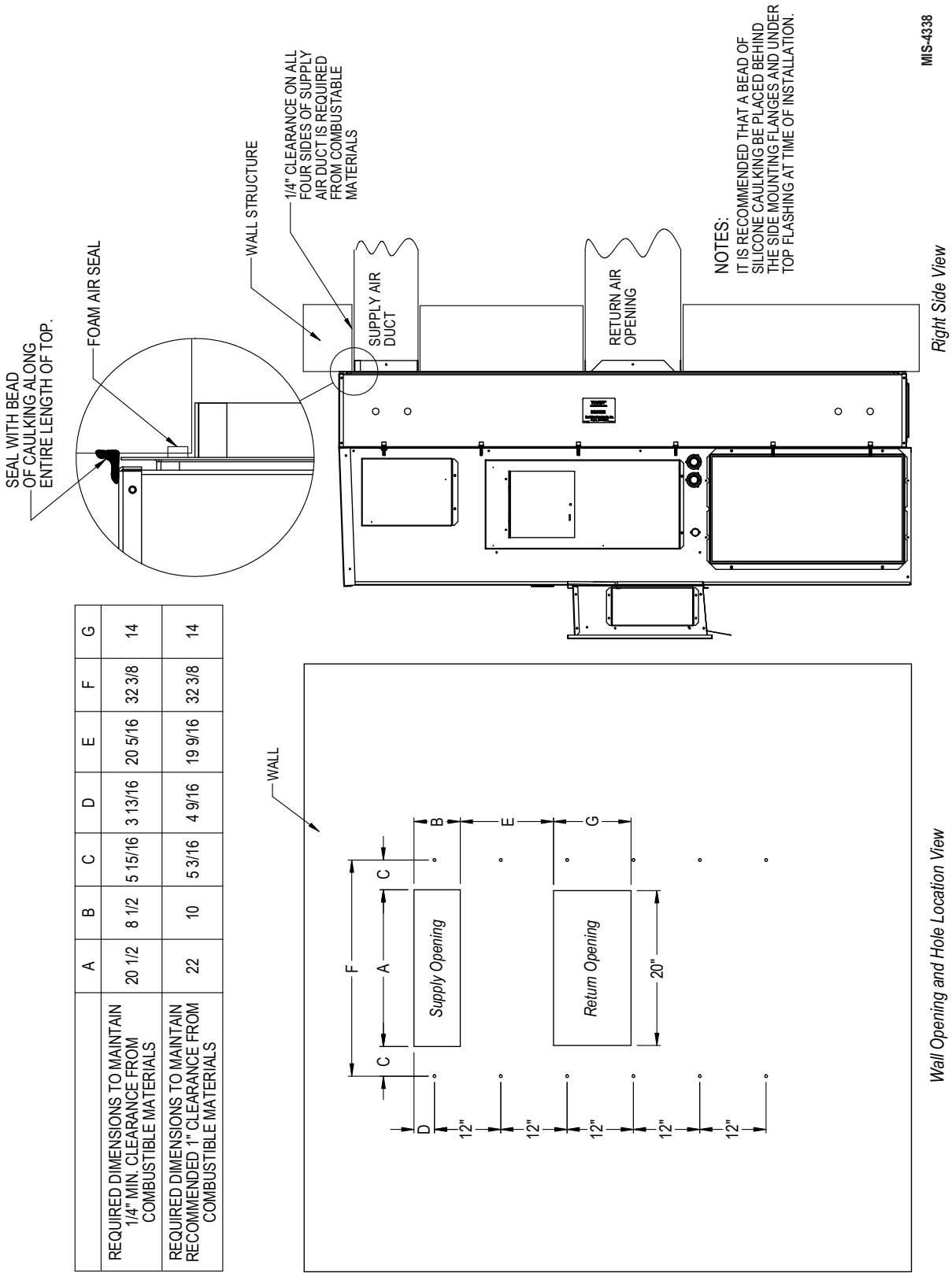
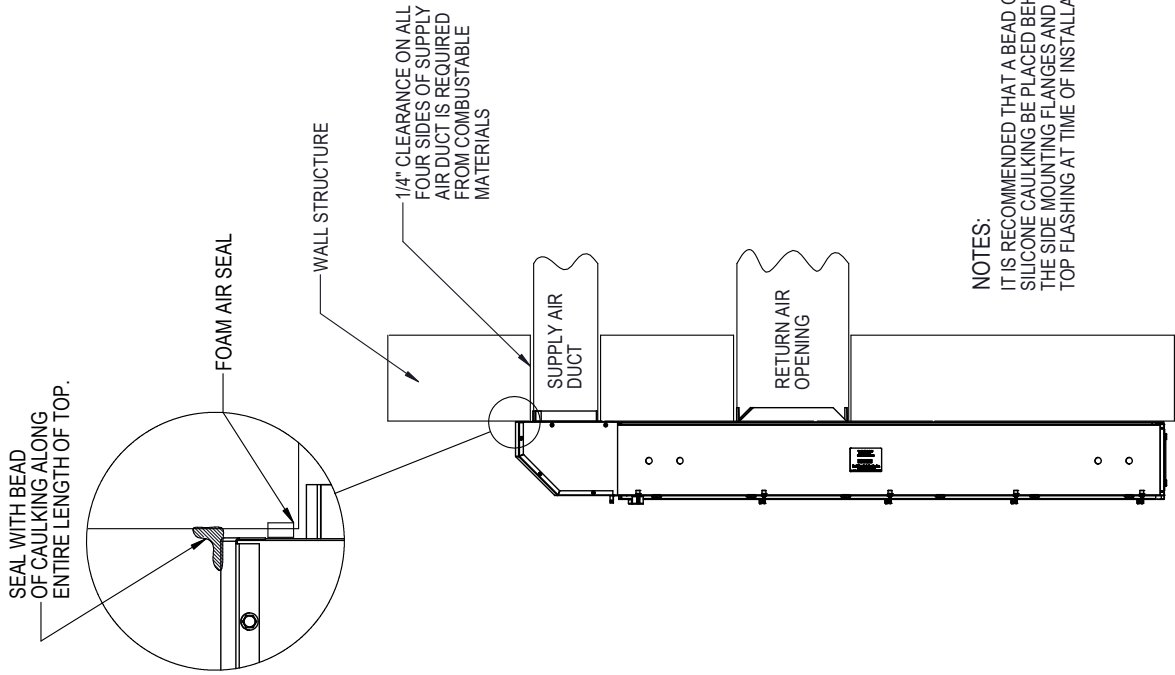


FIGURE 20
CFCF-32 Supply and Return Openings



MIS-4338

FIGURE 21
CFCT-32 Supply and Return Openings

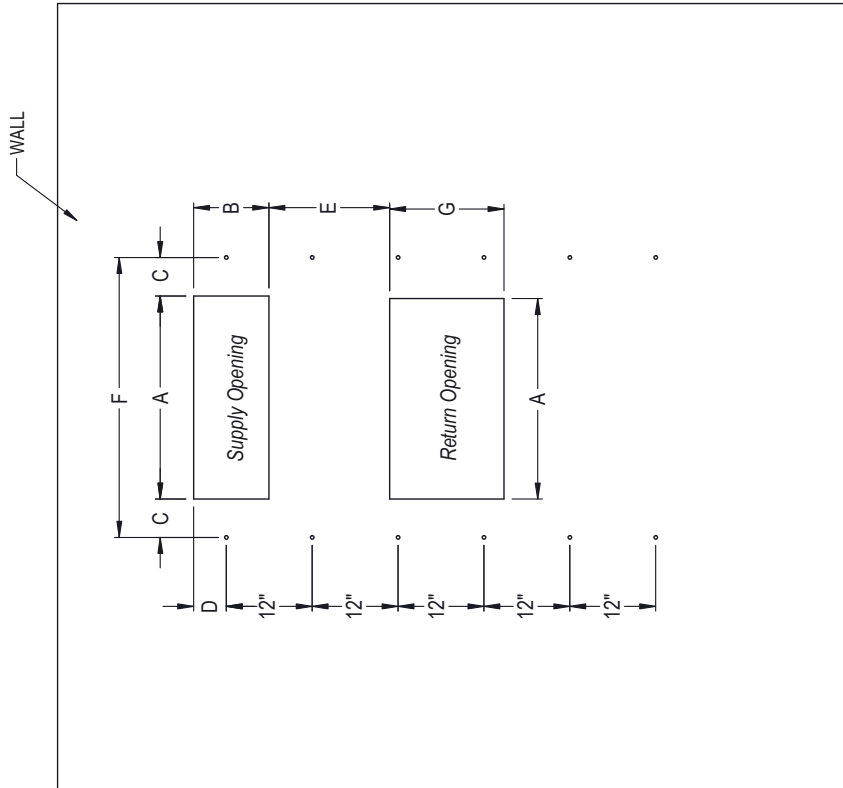


NOTES:
 IT IS RECOMMENDED THAT A BEAD OF SILICONE CAULKING BE PLACED BEHIND THE SIDE MOUNTING FLANGES AND UNDER TOP FLASHING AT TIME OF INSTALLATION.

Right Side View

MIS-4340

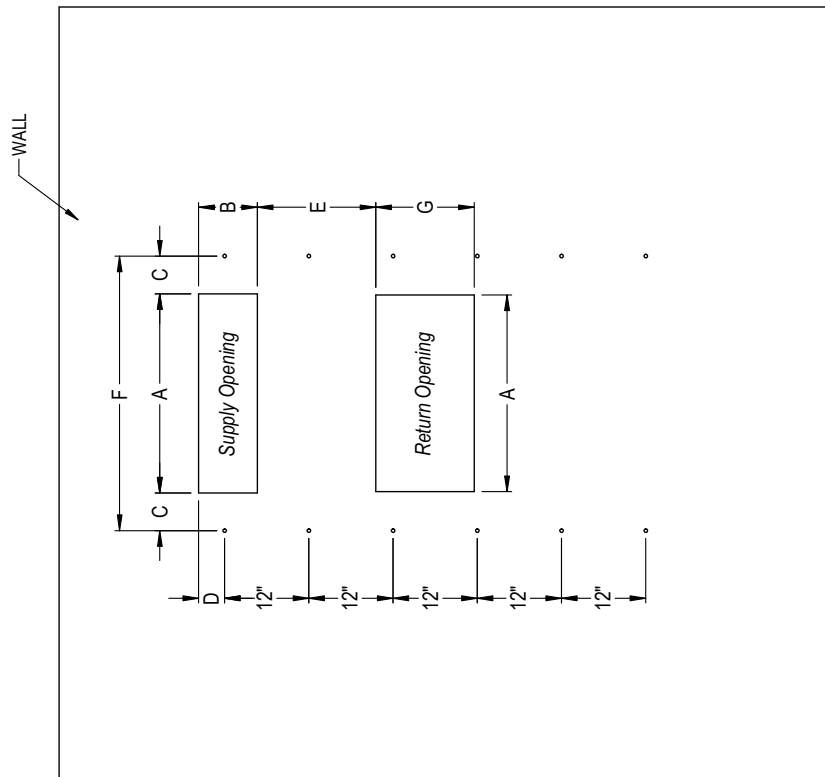
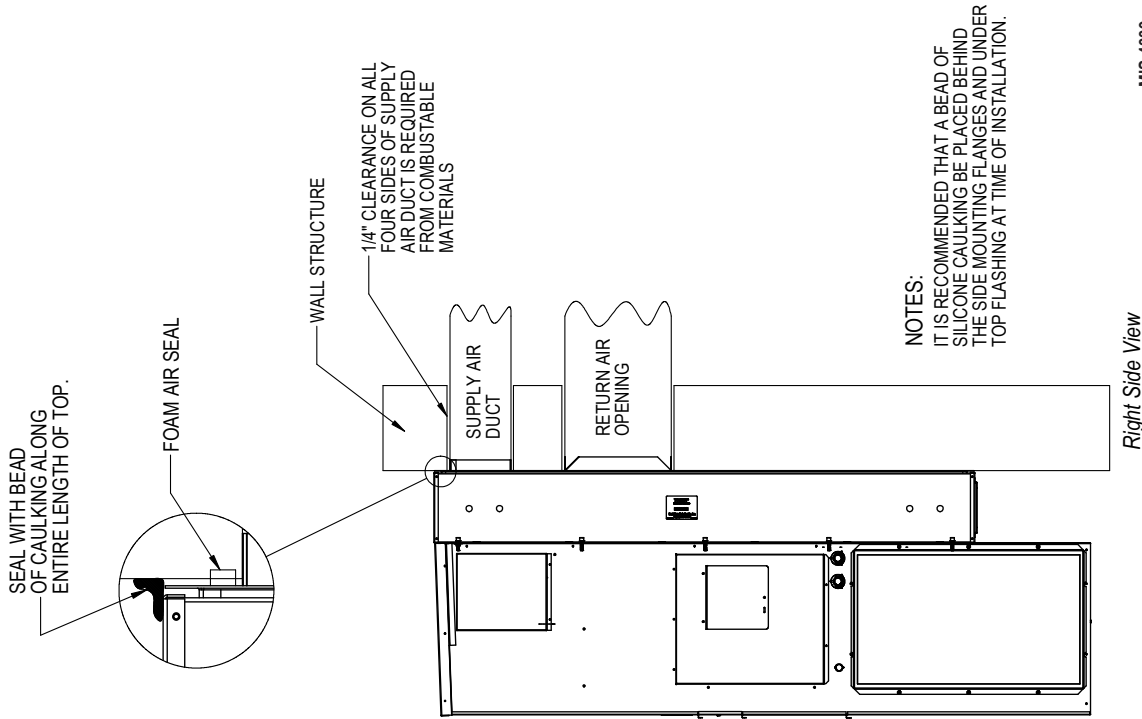
	A	B	C	D	E	F	G
REQUIRED DIMENSIONS TO MAINTAIN 1/4" MIN. CLEARANCE FROM COMBUSTIBLE MATERIALS	20 1/2	8 1/2	5 15/16	3 13/16	20 5/16	32 3/8	14
REQUIRED DIMENSIONS TO MAINTAIN RECOMMENDED 1" CLEARANCE FROM COMBUSTIBLE MATERIALS	22	10	5 3/16	4 9/16	19 9/16	32 3/8	14



Wall Opening and Hole Location View

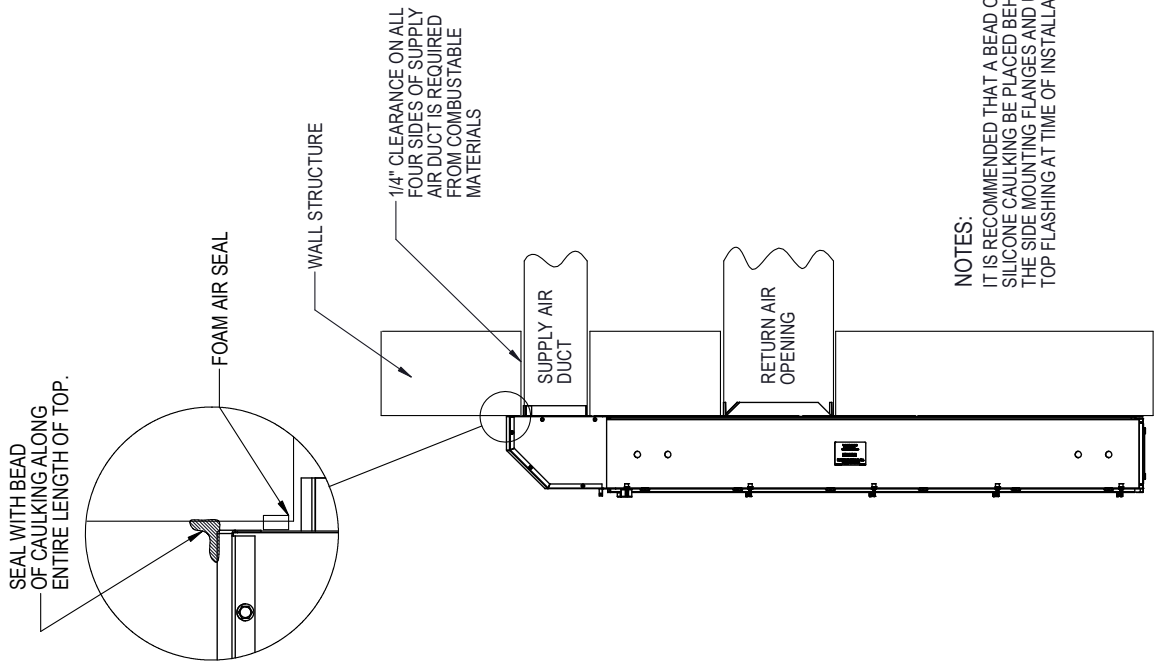
FIGURE 22
CFCF-53 Supply and Return Openings

	A	B	C	D	E	F	G
REQUIRED DIMENSIONS TO MAINTAIN 1/4" MIN. CLEARANCE FROM COMBUSTIBLE MATERIALS	28 1/2	8 1/2	5 5/16	3 13/16	17 5/8	39 1/8	14
REQUIRED DIMENSIONS TO MAINTAIN RECOMMENDED 1" CLEARANCE FROM COMBUSTIBLE MATERIALS	30	10	4 9/16	4 9/16	16 7/8	39 1/8	14



MIS-4339

FIGURE 23
CFCT-53 Supply and Return Openings

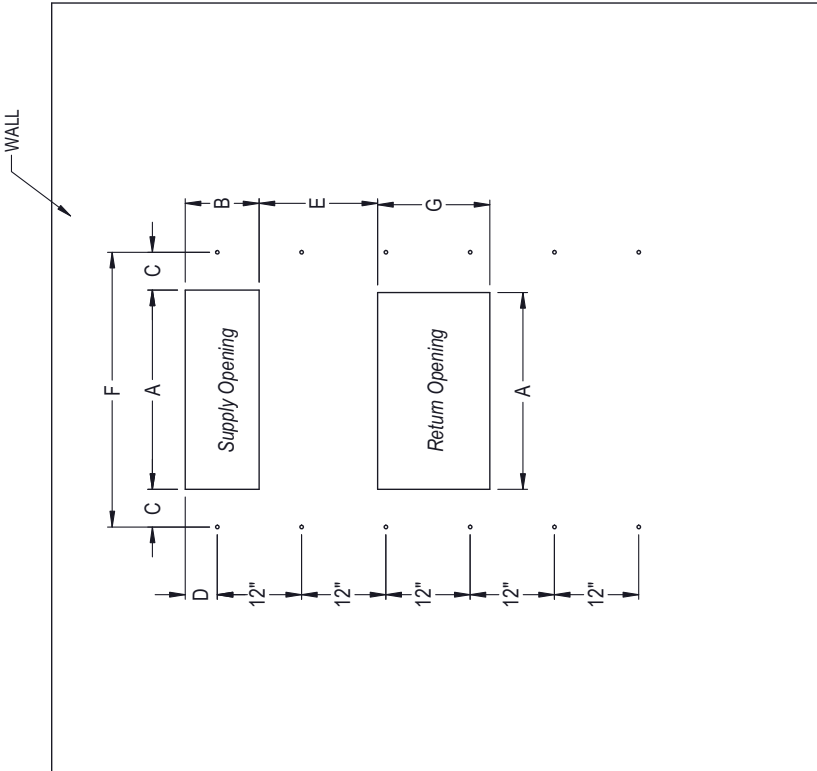


NOTES:
 IT IS RECOMMENDED THAT A BEAD OF SILICONE CAULKING BE PLACED BEHIND THE SIDE MOUNTING FLANGES AND UNDER TOP FLASHING AT TIME OF INSTALLATION.

MIS-3841B

Right Side View

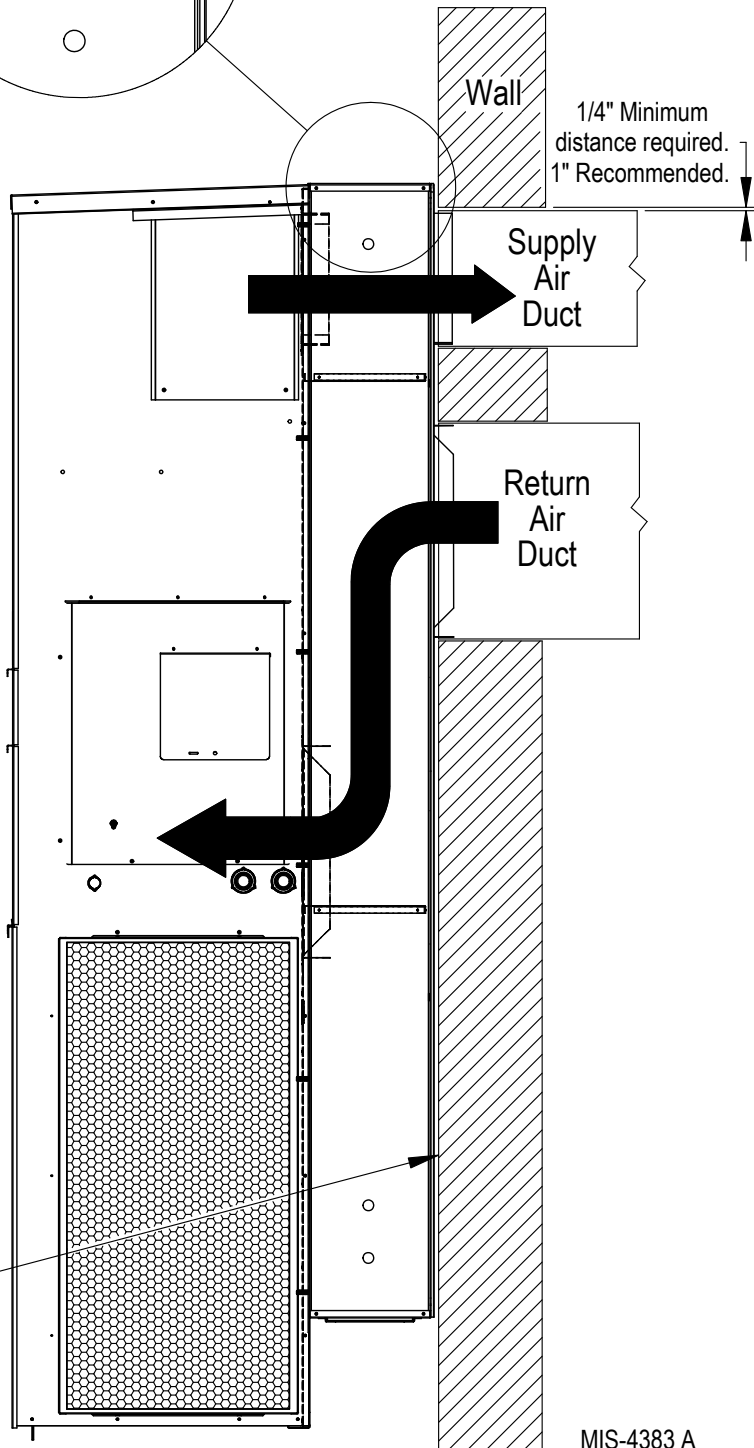
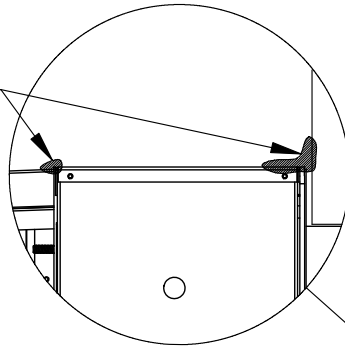
	A	B	C	D	E	F	G
REQUIRED DIMENSIONS TO MAINTAIN 1/4" MIN. CLEARANCE FROM COMBUSTIBLE MATERIALS	28 1/2	8 1/2	5 15/16	3 13/16	17 5/8	39 1/8	14
REQUIRED DIMENSIONS TO MAINTAIN RECOMMENDED 1" CLEARANCE FROM COMBUSTIBLE MATERIALS	30	10	4 9/16	4 9/16	16 7/8	39 1/8	14



Wall Opening and Hole Location View

FIGURE 24A
Sealing with Caulk

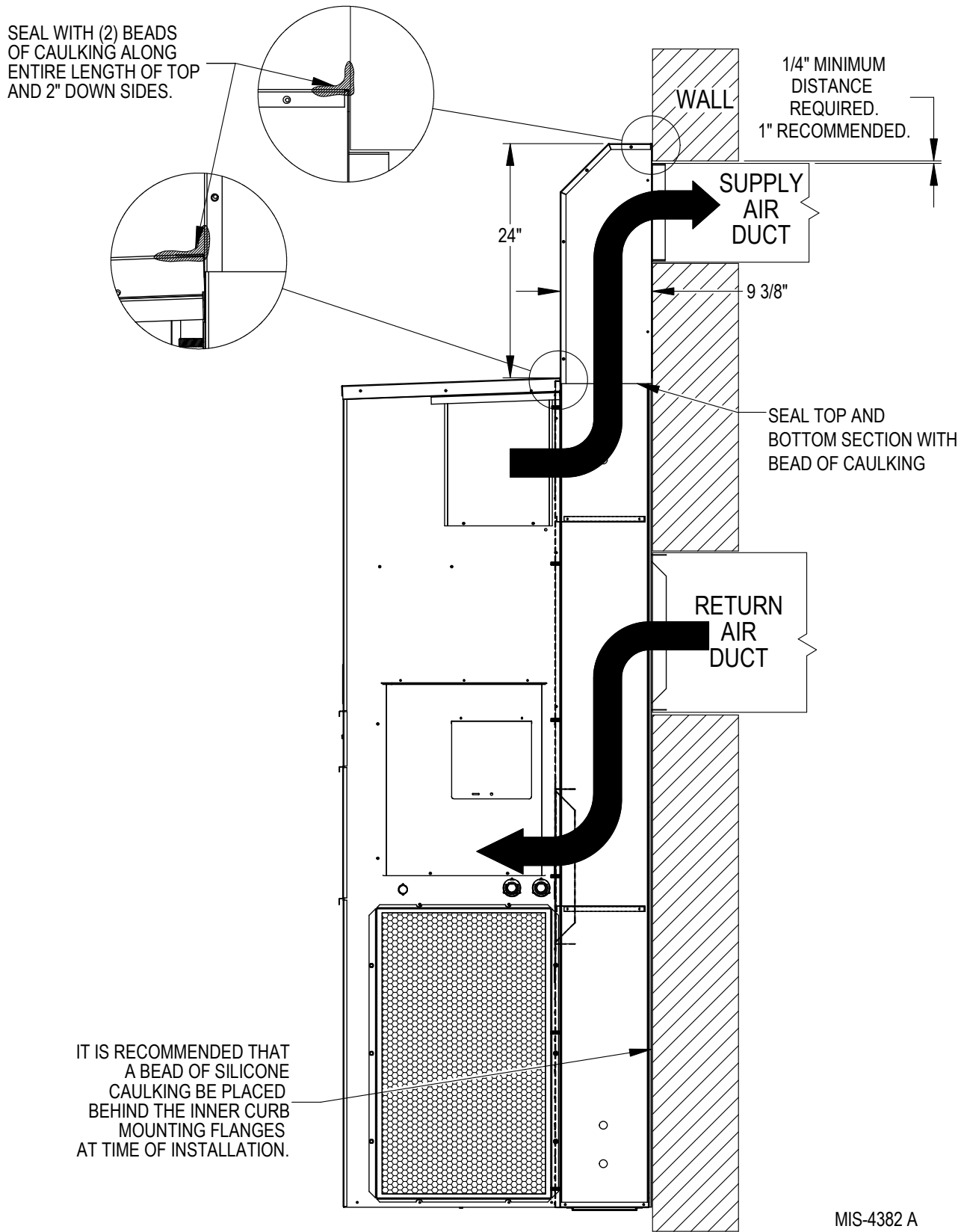
Seal with (2) beads
of caulking along
entire length of top
and 2" down sides.



It is recommended that a bead of silicone
caulking be placed behind the inner curb
mounting flanges at time of installation.

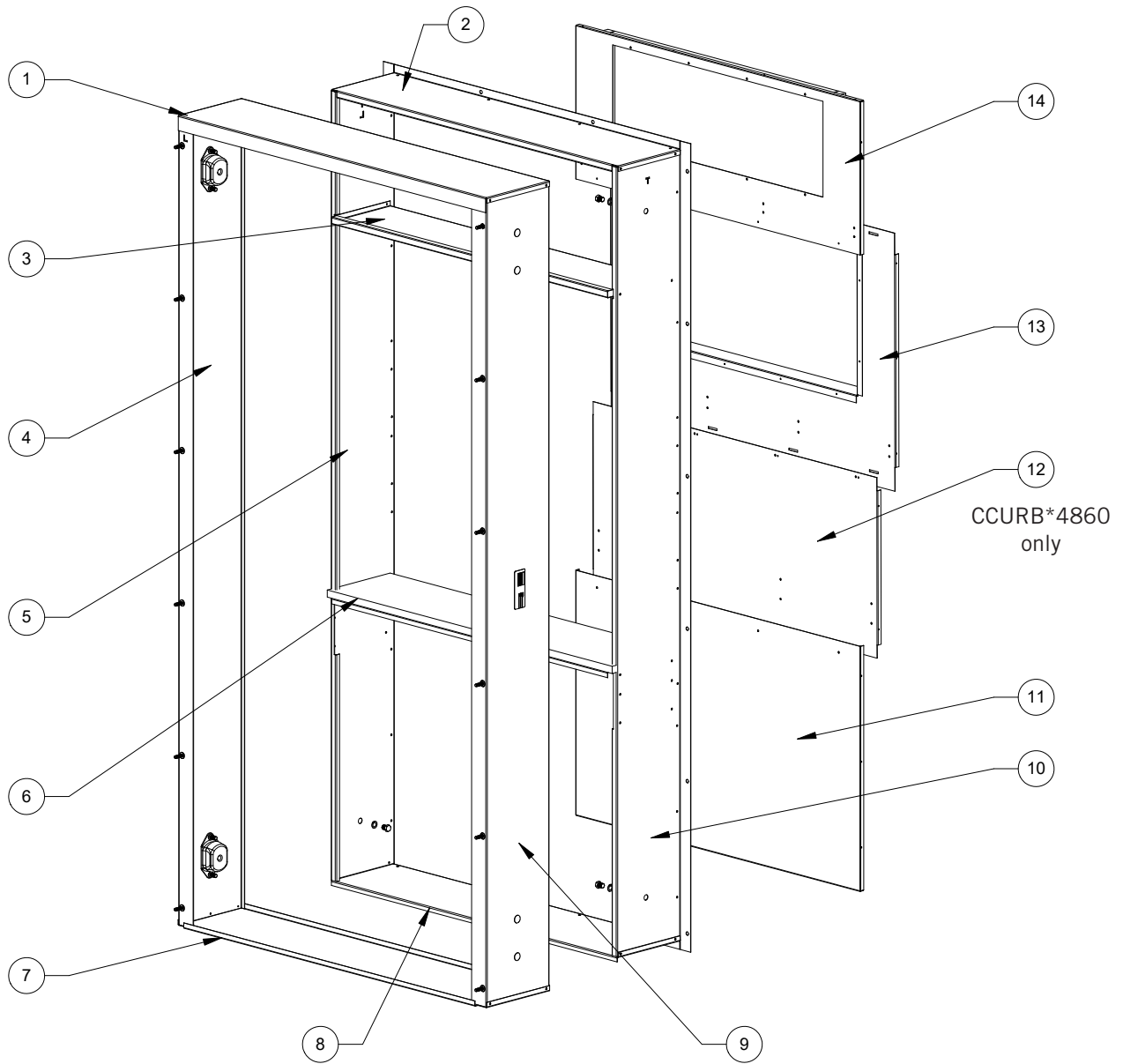
MIS-4383 A

FIGURE 24B
Sealing with Caulk (Top Outlet Curb)



Replacement Parts

Wall Curb



SEXP-1072

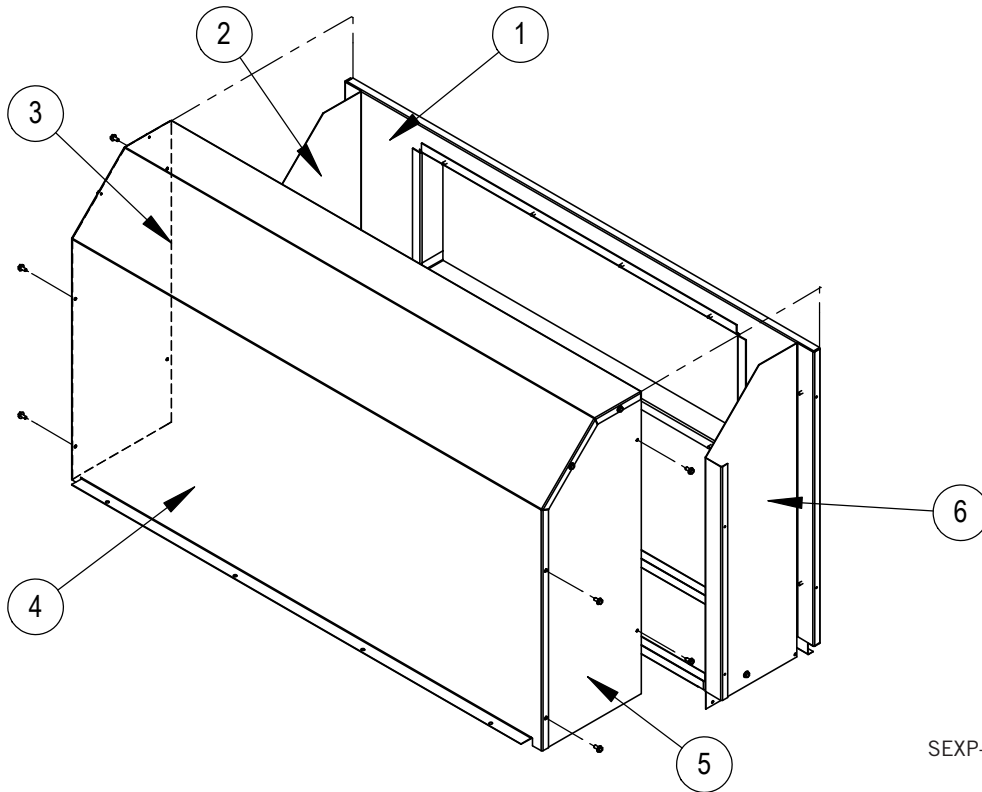
Wall Curb

Dwg No.	Part Number	Description	CCURBF2430	CCURBT2430	CCURBF4860	CCURBT4860	CFCF-32	CFCT-32	CFCF-53	CFCT-53
1	141-469-*BX ①	Top Outside Support	X							
1	141-446-*BX ①	Top Outside Support			X					
1	141-419-*BX ①	Top Outside Support					X			
1	141-417-*BX ①	Top Outside Support							X	
2	541-449BX	Top Inside Support	X							
2	541-447BX	Top Inside Support			X					
2	541-460BX	Top Inside Support					X			
2	541-461BX	Top Inside Support							X	
3	521-532BX	Upper Partition	X	X						
3	521-530BX	Upper Partition			X	X				
3	521-539BX	Upper Partition					X	X		
3	521-540BX	Upper Partition							X	X
4	501-760-*BX ①	Outside Left Side	X	X						
4	501-756-*BX ①	Outside Left Side			X	X				
4	501-1046-*BX ①	Outside Left Side					X	X		
4	501-1050-*BX ①	Outside Left Side							X	X
5	501-1166BX	Inside Left Side	X	X						
5	501-949BX	Inside Left Side			X	X				
5	501-1167-8BX	Inside Left Side					X	X		
5	501-1052-*BX ①	Inside Left Side							X	X
6	521-532BX	Lower Partition	X	X						
6	521-641BX	Lower Partition			X	X				
6	521-539BX	Lower Partition					X	X		
6	521-640BX	Lower Partition							X	X
7	141-605-*BX ①	Lower Outside Support	X	X						
7	141-560-*BX ①	Lower Outside Support			X	X				
7	141-607-*BX ①	Lower Outside Support					X	X		
7	141-558-*BX ①	Lower Outside Support							X	X
8	141-604BX	Lower Inside Support	X	X						
8	141-559BX	Lower Inside Support			X	X				
8	141-606BX	Lower Inside Support					X	X		
8	141-557BX	Lower Inside Support							X	X
9	501-759-*BX ①	Outside Right Side	X	X						
9	501-755-*BX ①	Outside Right Side			X	X				
9	501-1045-*BX ①	Outside Right Side					X	X		
9	501-1049-*BX ①	Outside Right Side							X	X
10	501-1165BX	Inside Right Side	X	X						
10	501-948BX	Inside Right Side			X	X				
10	501-1168-*BX ①	Inside Right Side					X	X		
10	501-1051-*BX ①	Inside Right Side							X	X
11	509-487BX	Lower Back	X	X						
11	109-474BX	Lower Back			X	X				
11	509-488BX	Lower Back					X	X		
11	509-305BX	Lower Back							X	X
12	509-295BX	Middle Fill			X	X				
13	509-358BX	Middle Back	X	X						
13	509-354BX	Middle Back			X	X				
13	509-371BX	Middle Back					X	X		
13	509-374BX	Middle Back							X	X
14	509-360BX	Upper Back	X	X						
14	509-186BX	Upper Back			X	X				
14	509-307BX	Upper Back					X	X		
14	509-382BX	Upper Back							X	X

① Exterior cabinet parts are manufactured with various paint color options. To ensure the proper paint color is received, reference the following codes:

X – Beige 1 – White 4 – Gray 5 – Desert Brown 8 – Dark Bronze

Top Box Assembly



SEXP-1073

Dwg No.	Part Number	Description	CCURBT2430	CCURBT4860	CFCT-32	CFCT-53
1	509-384BX	Back Assembly	X			
1	509-355BX	Back Assembly		X		
1	509-385BX	Back Assembly			X	
1	509-383BX	Back Assembly				X
2	501Y985BX	Inner Left Side	X			X
2	501Y950BX	Inner Left Side		X		
2	501Y986BX	Inner Left Side			X	
3	100-764-*BX ①	Outer Left Side	X			X
3	100-753-*BX ①	Outer Left Side		X		
3	100-771-*BX ①	Outer Left Side			X	
4	515-256-*BX ①	Main Panel	X			
4	515-255-*BX ①	Main Panel		X		
4	515-258-*BX ①	Main Panel			X	
4	515-257-*BX ①	Main Panel				X
5	101-763-*BX ①	Outer Right Side	X			X
5	100-752-*BX ①	Outer Right Side		X		
5	101-770-*BX ①	Outer Right Side			X	
6	501X985BX	Inner Right Side	X			X
6	501X950BX	Inner Right Side		X		
6	501X986BX	Inner Right Side			X	

① Exterior cabinet parts are manufactured with various paint color options. To ensure the proper paint color is received, reference the following codes:

X – Beige 1 – White 4 – Gray 5 – Desert Brown 8 – Dark Bronze