



PH13-SERIES PACKAGED HEAT PUMPS

Cooling Capacities: 21,000 to 56,500
SEER: 13.0

Heating Capacities: 19,500 to 52,000
HSPF: 7.7

GREEN REFRIGERANT R-410A



BACK (OUTDOOR AIRFLOW) END OF UNIT



FRONT (INDOOR AIRFLOW) END OF UNIT

Standard Engineered Features

Heat Pump Compressor:

Scroll compressors are used on all models and no crankcase heaters are required.

R-410A Refrigerant:

Designed with R-410A (HFC) non-ozone depleting refrigerant in compliance with the Montreal protocol and 2010 EPA requirements.

ECM Indoor Blower Motor:

Features an electronically commutated motor providing super-high efficiency, low sound levels and soft-start capabilities. The motor is self-adjusting to provide the proper airflow rate for a broad range of static pressure in ducted installations without user adjustment or wiring changes.

Aluminum Finned Copper Coils:

Grooved tubing and enhanced louvered fin for maximum heat transfer and energy efficiency.

Outdoor coil is constructed with special corrosion resistant hydrophilic fin stock with 2-layer coating. (1st layer - blue acrylic primer; 2nd layer - clear topcoat.)

Thermal Expansion Valves:

All models contain non-bleed TXV.

Liquid Line Filter Drier:

Bi-directional drier protects system against moisture.

Solid State Electronic Heat Pump Control:

Provides efficient 30, 60 or 90-minute defrost cycle. A thermistor sensor and speed up terminal for service, along with a 10-minute defrost override are standard on the electronic heat pump control.

Five Minute Compressor Time Delay:

Provides short cycle protection for the compressor, which extends compressor life. Built into the electronic heat pump control as standard.

Phase Rotation Monitor:

Standard on all 3-phase models. Protects against reverse rotation if power supply is not properly connected.

High & Low Pressure Switches are Auto-Reset

Built-in lockout circuit resets from the room thermostat. Provides commercial quality protection to the compressor.

Pre-Painted 20 Gauge Zinc Coated Steel Cabinet:

Cleaned, rinsed, sealed and dried before the polyurethane primer is applied. The cabinet is handsomely finished with a baked on textured enamel, which allows it to withstand 1000 hours of salt spray tests per ASTM B117-03.

Pre-Painted 16 Gauge Zinc Coated Unit Base:

The unit base is treated with the same paint coatings as the cabinet above, insuring years of service.

Top Discharge Outdoor Fan:

Efficiently moves air quietly for effective heat exchange.

Electrical Components and Controls:

Readily accessible for easier service.

Field Installed Accessories

Optional Field Installed Electric Heat Strips:

With automatic limit and thermal cutoff.

- Field installed heater package for all models.
- Features slide-in field assembly with various BTUH outputs.
- Permits stocking of only one unit.

Optional Field Installed Outdoor Thermostat:

Controls compressor operation and supplemental electric heat strips for maximum operating economy.

Optional Field Installed Low Ambient Control:

Cycles outdoor fan motor below 55°F outdoor temperature to maintain acceptable condensing pressure.



• Intertek ETL Listed to Standard for Safety Heating and Cooling Equipment ANSI/UL 1995/CSA 22.2 No. 236-05, Third Edition.

Cooling & Heating Capacities and Efficiency Ratings

MODEL	Phase	COOLING		HEATING 47°F		HEATING 17°F
		BTUH	SEER	BTUH	HSPF *	BTUH
PH13242-A	1	21,000	13.00	19,500	7.7	11,500
PH13302-A	1	27,400	13.00	28,800	7.7	16,400
PH13363-A, -B	1 and 3	33,000	13.00	34,400	7.7	20,800
PH13422-A, -B, -C	1 and 3	41,500	13.00	44,000	7.7	26,600
PH13482-A, -B, -C	1 and 3	45,000	13.00	45,500	7.7	28,600
PH13602-A, -B, -C	1 and 3	56,500	13.00	52,000	7.7	32,400

Tested and Certified in accordance with ARI Standard 210/240-2003.

* Heating Seasonal Performance Factor at Region IV minimum design heating requirement per DOE test procedures in effect at time of printing.

General Specifications

Model	PH13242-A	PH13302-A	PH13363-A	PH13363-B	PH13422-A	PH13422-B	PH13422-C	PH13482-A	PH13482-B	PH13482-C	PH13602-A	PH13602-B	PH13602-C
Electric Rating 60 Hz - Ckt A	230/208-60-1	230/208-60-1	230/208-60-1	230/208-60-3	230/208-60-1	230/208-60-3	460-60-3	230/208-60-1	230/208-60-3	460-60-3	230/208-60-1	230/208-60-3	460-60-3
Operating Voltage Range	197-253	197-253	197-253	187-253	197-253	187-253	414-506	197-253	187-253	414-506	197-253	187-253	414-506
Minimum Circuit Ampacity ②	20	22	24	17	33	25	12	36	29	14	39	26	17
BCSC	13	14	16.7	10.5	21	15	8	22	14	8	26	16	9
Field Wire Size ③	12	10	10	12	10	10	14	8	10	12	8	10	10
Ground Wire Size	12	10	8	12	10	10	14	8	10	14	8	10	12
Delay Fuse - Max. ④	30	30	40	25	50	35	15	50	40	20	60	40	25
Total Unit Amps	11.2/12.2	14.8/16.3	19.4/21.9	13.9/15.4	21.9/22.9	17.1/17.9	10.4	24.7/26.6	18.0/19.2	10.7	25.3/28.9	17.7/19.9	11.9
Compressor - Circuit A													
Compressor Type	Scroll	Scroll	Scroll	Scroll	Scroll	Scroll	Scroll	Scroll	Scroll	Scroll	Scroll	Scroll	Scroll
Volts	230/208	230/208	230/208	230/208	230/208	230/208	460	230/208	230/208	460	230/208	230/208	460
Rated Load Amps	8/9	11/12.5	12.8/14.4	8.9/10	16.1/17.1	11.3/12.0	7.7	18.7/20.6	12.0/13.2	7.7	19.3/22.9	11.7/13.9	8.6
Lock Rotor Amps	58.3/58.3	73/73	79/79	88/88	115/115	115/115	50	117/117	83.1/83.1	50	134/134	110/110	52
Fan Motor and Condenser													
Fan Motor - HP/RPM	1/6 / 825	1/6 / 825	1/6 / 825	1/6 / 825	1/4 / 825	1/4 / 825	1/4 / 825	1/4 / 825	1/4 / 825	1/4 / 825	1/4 / 825	1/4 / 825	1/4 / 825
Fan Motor Amps	1.1	1.1	1.1	1.1	1.5	1.5	1.5	1.5	1.5	1.5	1.5	1.5	1.5
Fan Dia/CFM	24"/2800	24"/2600	24"/2600	24"/2600	24"/3400	24"/3400	24"/3400	24"/3400	24"/3400	24"/3400	24"/3400	24"/3400	24"/3400
Motor and Evaporator													
Blower Motor - HP ⑤	1/3 - ECM	1/2 - ECM	1/2 - ECM	1/2 - ECM	1/2 - ECM	1/2 - ECM	1/2 - ECM	3/4 - ECM	3/4 - ECM	3/4 - ECM	3/4 - ECM	3/4 - ECM	3/4 - ECM
Blower Motor - Amps	1.8	2.3	2.3	2.3	3.9	3.9	3.9	4.5	4.5	4.5	5.0	5.0	5.0
Charge (R-410A oz.)	72	123	122	122	170	170	170	163	163	163	190	190	190
Shipping Weight (pounds)	360	410	410	410	440	440	490	440	440	490	450	450	500

① ECM = Electronically Commutated Motor

② Maximum time delay fuse or HACR type circuit breaker for protection of field wiring devices.

③ Based on 75°C copper wire. All wiring must conform to the National Electrical Code and all local codes.

④ These "Minimum Circuit Ampacity" values are to be used for sizing the field power conductors. Refer to National Electric Code (latest revision), Article 310 for power conductor sizing.

Indoor Blower Performance ①

MODEL	Rated ESP	MAX ESP	② Continuous Airflow	③ Rated Cooling CFM	④ Rated Heat Pump CFM	⑤ Rated Electric Heat CFM
PH1324	0.10	0.50	600	800	800	1000
PH1330	0.15	0.50	750	1000	1000	1000
PH1336	0.15	0.50	825	1100	1100	1100
PH1342	0.20	0.50	925	1400	1400	1400
PH1348	0.20	0.50	1025	1550	1550	1750
PH1360	0.20	0.50	1150	1750	1750	1750

① Motor will deliver consistent CFM through voltage supply range with no deterioration (197-253V for all 230/208V models or 414-506V for 460V models).

② Continuous CFM is the total air being circulated during continuous (manual fan) mode.

③ Will occur automatically with a call for "Y" for cooling mode operation.

④ Will occur automatically with a call for "W1" for heat pump mode operation.

⑤ Will occur automatically with a call for "W2" for electric heat operation

Optional Field Installed Electric Heater Packages

Optional field-installed electric heater packages are available for 5 through 15KW capacities. The heater packages are UL listed to be field-installed into the basic unit. They feature prewired control circuit wiring with plug-in connector. Simply slide the heater into the unit, plug in the pretested control circuit and connect the separate high voltage circuit wiring.



IMPORTANT: While this electrical data is presented as a guide, it is important to electrically connect properly sized fuses and conductor wires in accordance with the National Electrical Code and all existing local codes.

Optional Field Installed Heater Packages Are Only To Be Used With The Models As Indicated Below

Heater Package Model	Volts and Phase	PH13242-A	PH13302-A	PH13363-A	PH13363-B	PH13422-A	PH13422-B	PH13422-C	PH13482-A	PH13482-B	PH13482-C	PH13602-A	PH13602-B	PH13602-C
EHP323-A05	240/208-1	X	X	X										
EHP323-A10	240/208-1	X	X	X										
EHP323-A15	240/208-1		X ①	X ①										
EHP323-B09	240/208-3				X									
EHP323-B15	240/208-3				X ②									
EHP513-A05	240/208-1					X			X			X		
EHP513-A10	240/208-1					X			X			X		
EHP513-A15	240/208-1					X ①			X ①			X ①		
EHP513-B09	240/208-3						X			X			X	
EHP513-B15	240/208-3						X ②			X ②			X ②	
EHP513-C09	460-3							X			X			X
EHP513-C15	460-3							X ②			X ②			X ②

① Max. KW that can operate with Heat Pump on is 10 KW. 15 KW will operate during emergency heat.

② Max. KW that can operate with Heat Pump on is 9 KW. 15 KW will operate during emergency heat.

Optional Field Installed Electric Heater Table — 2 through 5 Ton

Heater Pkg. Model No.	Unit Volts & Phases	Heater KW & Capacity @ 240 Volts (480)		Heater KW & Capacity @ 208 Volts		240/208V Heater Amps (480)	Heater Internal Fuse	Circuit B				
		KW	BTUH	KW	BTUH			No. Field Circuits	Min. Circuit Ampacity	① Max. Over Current Protection	② Field Power Wiring	③ Ground Wire Size
EHP323-A05	240/208-1	5	17,100	3.75	12,800	20.8/18.1	30/60	1	26/23	30/25	10/10	10
EHP323-A10	240/208-1	10	34,100	7.50	26,000	41.6/36.2		1	53/46	60/50	6/8	10
EHP323-A15	240/208-1	15	51,200	11.25	38,400	62.5/54.1		1	79/68	80/70	4/4	8
EHP513-A05	240/208-1	5	17,100	3.75	12,800	20.8/18.1	30/60	1	26/23	30/25	10/10	10
EHP513-A10	240/208-1	10	34,100	7.50	26,000	41.6/36.2		1	53/46	60/50	6/8	10
EHP513-A15	240/208-1	15	51,200	11.25	38,400	62.5/54.1		1	79/68	80/70	4/4	8
EHP323-B09	240/208-3	9	30,700	6.75	23,000	21.7/18.7	None	1	28/24	30/25	10/10	10
EHP323-B15	240/208-3	15	51,200	11.25	38,400	36.2/31.2		1	46/39	50/40	8/8	10
EHP513-B09	240/208-3	9	30,700	6.75	23,000	21.7/18.7	None	1	28/24	30/25	10/10	10
EHP513-B15	240/208-3	15	51,200	11.25	38,400	36.2/31.2		1	46/39	50/40	8/8	10
EHP513-C09	480-3	9	30,700			10.8	None	1	14	15	14	14
EHP513-C15	480-3	15	51,200			18		1	28	30	10	12

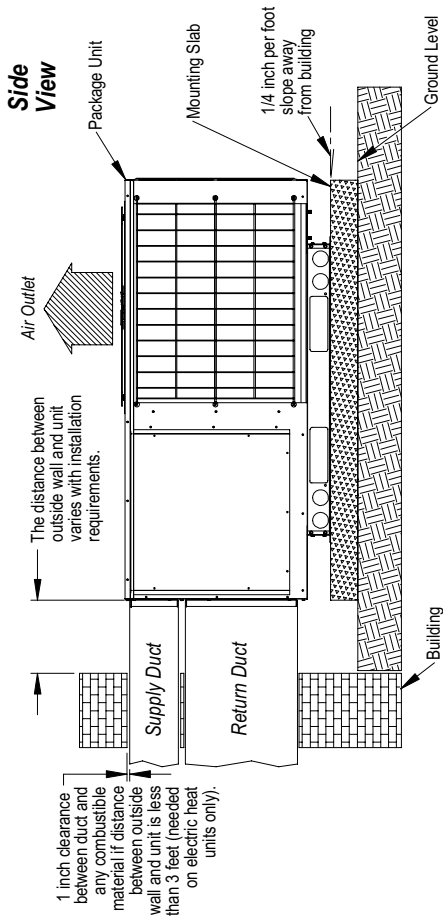
① Maximum size of the time delay fuse or HACR circuit breaker for protection of field wiring devices.

② Based on wire suitable for 75°C. Other wiring materials must be rated for marked "Minimum Circuit Ampacity" or greater. Based on 75°C copper wire. All wiring must conform to the National Electric Code and all local codes.

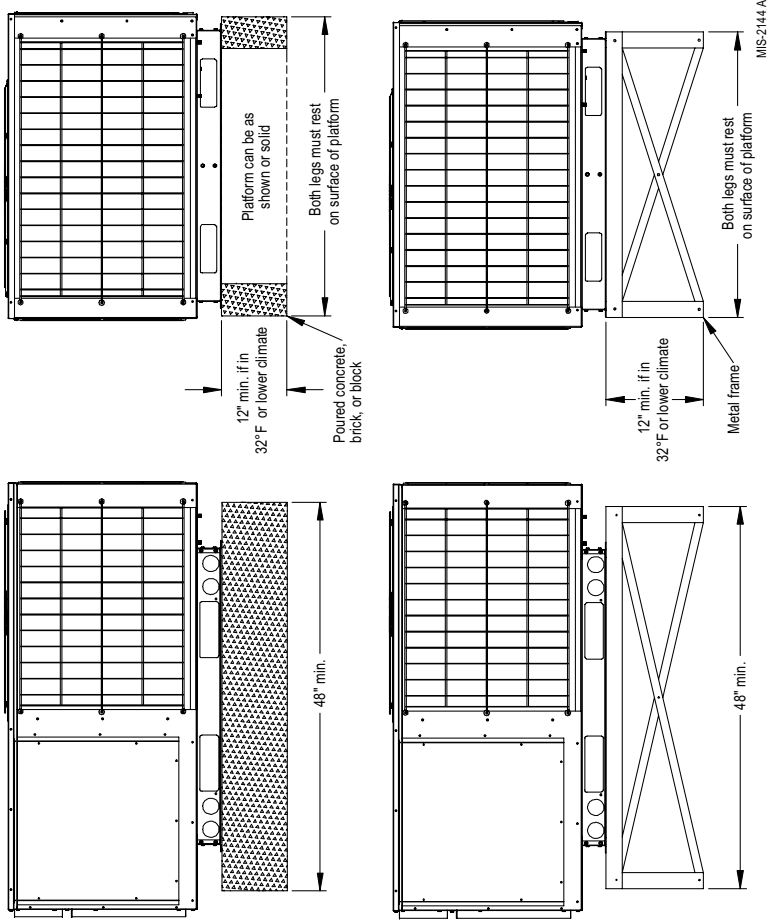
③ These "Minimum Circuit Ampacity" values are to be used for sizing the field power conductors. Refer to the National Electric Code (latest revision), Article 310 for power conductor sizing.

IMPORTANT: While this electrical data is presented as a guide, it is important to electrically connect properly sized fuses and conductor wires in accordance with the National Electrical Code and all existing local codes.

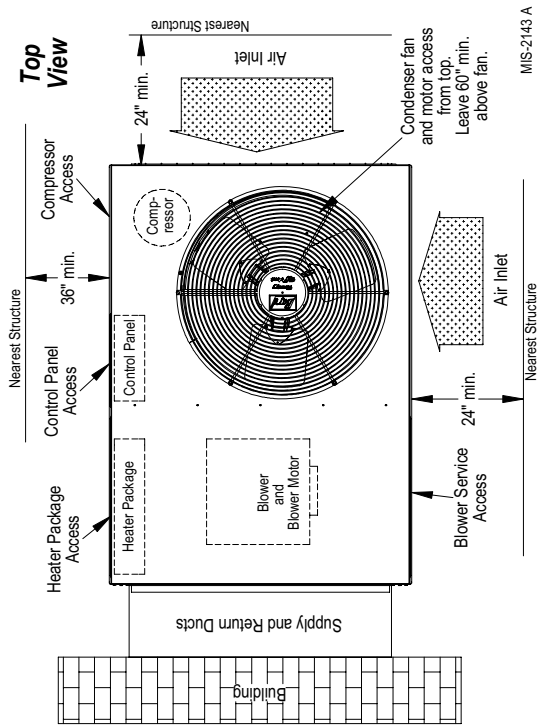
Slab Mounting at Ground Level



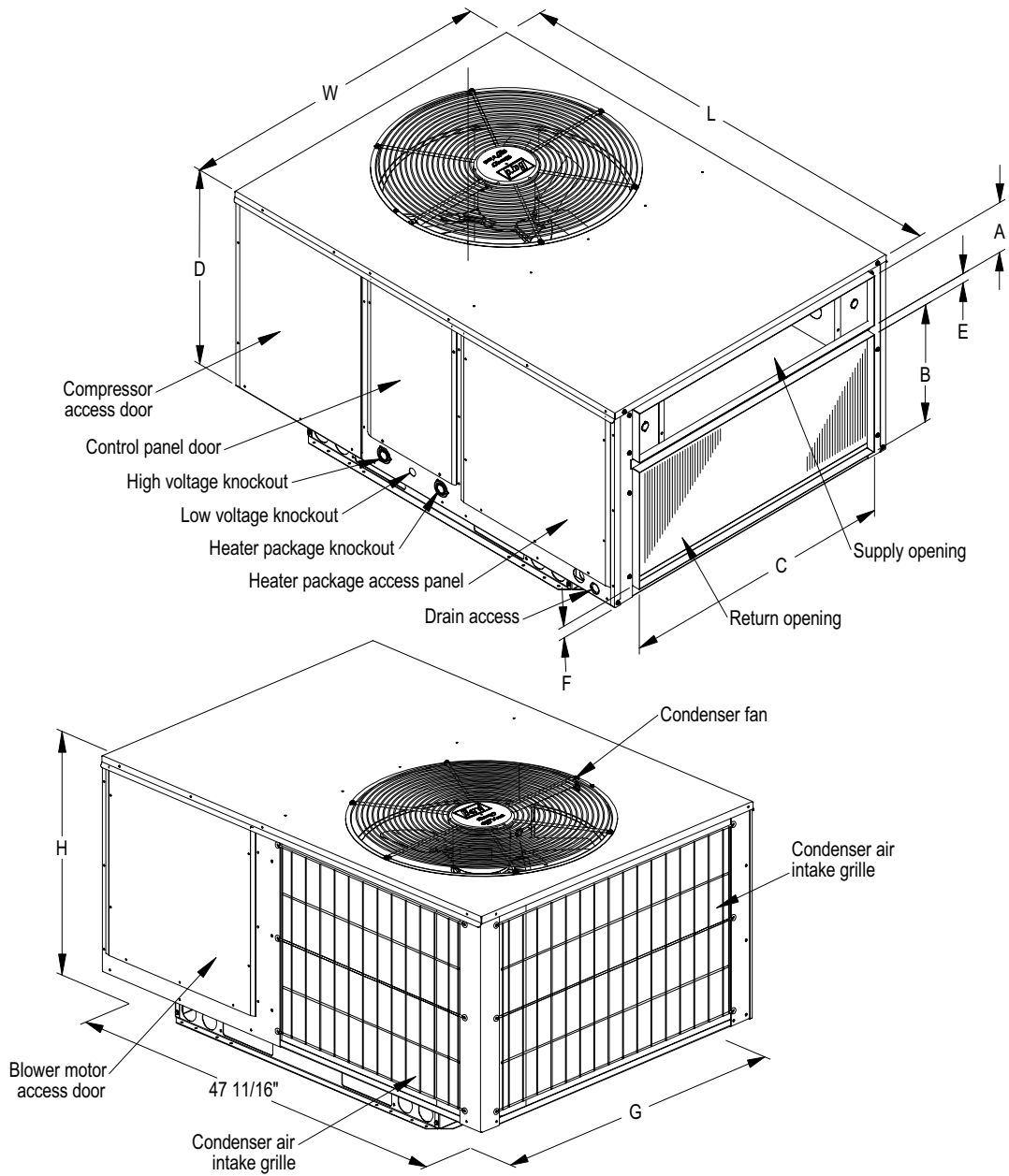
Elevated Mounting Platforms (Field Constructed)



Airflow & Service Access Clearances



Unit Dimensions



Unit Dimension Chart

Unit	Supply Size		Return Size		Unit Overall Dimensions			Unit General Dimensions			
	A	C	B	C	H (height)	L (length)	W (width)	D	E	F	G
PA/PH1324,1330,1336	5.875	32.875	13.875	32.875	26.25	53.25	38.125	23.25	1.125	1.375	35.625
PA/PH1342,1348,1360	9.875	37.875	15.875	37.875	33.25	55.25	42.375	30.25	1.5	2.375	38.125

MIS-2142 A

Optional Control Modules — Field Installed

Field Installed Part	Applicable To	Description
CMH-15	All Models	Low Ambient Control with Relay
CMH-16	All Models	Outdoor Thermostat with Relay
CMC-15	All -A Models	Compressor Start Kit

Optional Equipment — Roof Hood

- Shipped knocked down
- Polyester baked enamel galvalneal cabinet
- Heavy insulation - 1/2 inch
- Built-in filter
- Fresh air damper assembly provides up to 15% outside air.
- **Requires prefabricated roof curb 9042-003 or 9042-004. Order separately.**

Model No.	Applicable To	Shipping Weight
RHP313-A	2, 2-1/2 and 3 ton models	110
RHP513-A	3-1/2, 4 and 5 ton models	120

† Equivalent units - Shipping

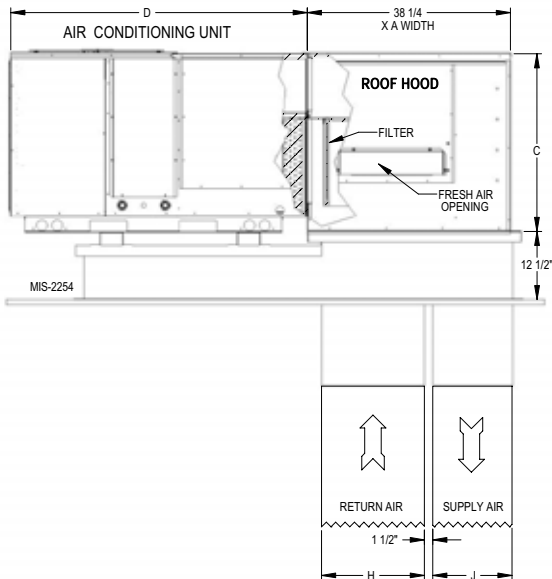
Performance and Application Data — RHP

RHP313-A Ventilation Air

Supply Air Static	Ventilation Air (CFM)										
	N/A	N/A	133	183	226	260	283	290	304	320	370
0.00	N/A	N/A	133	183	226	260	283	290	304	N/A	N/A
0.20	N/A	N/A	133	183	226	260	283	290	N/A	N/A	N/A
0.40	N/A	N/A	133	183	226	260	283	290	N/A	N/A	N/A
Return Static	0.00	0.05	0.10	0.15	0.20	0.25	0.30	0.35	0.40	0.45	0.50

RHP513-A BFAD Ventilation Air

Supply Air Static	Ventilation Air (CFM)										
	N/A	N/A	80	165	215	250	280	310	340	370	400
0.00	N/A	N/A	80	165	215	250	280	310	340	370	400
0.20	N/A	N/A	80	165	215	250	280	310	340	370	400
0.40	N/A	N/A	80	165	215	250	280	310	340	370	400
Return Static	0.00	0.05	0.10	0.15	0.20	0.25	0.30	0.35	0.40	0.45	0.50



Unit Dimensions

Roof Hood Model	Model	Nominal Tonnage	A	C	D	1" Filter
RHP313-A	PA1324 / PH1324	2 Ton	38-1/8	26	53-1/4	(1) 16 x 16
	PA1330 / PH1330	2½ Ton				and
	PA1336 / PH1336	3 Ton				(1) 16 x 20
RHP513-A	PA1342 / PH1342	3½ Ton	42	33	55-1/4	(2) 16 x 20
	PA1348 / PH1348	4 Ton				
	PA1360 / PH1360	5 Ton				

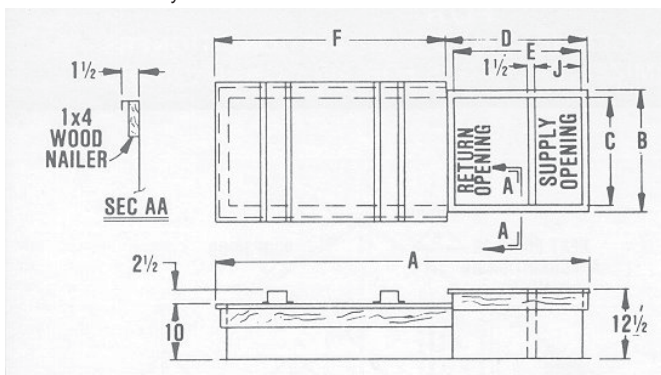
Optional Equipment — Pre-Fabricated Roof Curb

- Heavy gauge galvanized with wood nailing strip.
- **Prefabricated roof curb requires roof hood RHP313-A & RHP513-A. Order separately.**

Model No.	Applicable To	E.U.†	Shipping Weight
9042-003	2, 2-1/2 and 3 ton models	.80	144
9042-004	3-1/2, 4 and 5 ton models	.80	160

† Equivalent units - Shipping

Heavy gauge galvanized with wood nailing strip, welded/leakproof one piece construction - ready to install.



Model	Used With Roof Hood Model	A	B	C ①	D	E	F	J ①	H ①	Heat Pump and Air Conditioning Units
9042-003 (P36 Curb)	RHP313-A	80-3/8	40-1/4	37-1/4	38-3/8	35-3/8	42	14-3/4	19-1/8	All 2, 2-1/2, & 3 Ton Models
9042-004 (P60 Curb)	RHP513-A	82-3/8	44-1/8	41-1/8	38-3/8	35-3/8	44	14-3/4	19-1/8	All 3-1/2, 4 & 5 Ton Models

① Duct Sizing Information:

Return air dimension "C" is length / Supply air dimension "C" is length.

Return air dimension "H" is width / Supply air dimension "J" is width.

Optional Equipment — Energy Recovery Ventilator

- Assures continuous supply of fresh air and reduction of all indoor air pollutants. IAQ ASHRAE 62.1
- Provides 250 to 400 CFM (adjustable) of outside air and exhaust. Efficiencies up to 77% heating and 65% cooling.
- Designed for easy installation on roof hoods RHP313-A and RHP513-A.

Model No.	Shipping Weight
ERVR-A3D-X (230/208V)	125 lbs.
ERVR-C3D-X (460)	125 lbs.

PERFORMANCE AND APPLICATION DATA - ERVR-A3C

Summer Cooling Performance (Indoor Design Conditions 75° DB/62° WB)																			
Ambient O.D.	VENTILATION RATE - 400 CFM 63% Efficiency						VENTILATION RATE - 325 CFM 64% Efficiency						VENTILATION RATE - 250 CFM 65% Efficiency						
	VLT	VLS	VLL	HRT	HRS	HRL	VLT	VLS	VLL	HRT	HRS	HRL	VLT	VLS	VLL	HRT	HRS	HRL	
75	19,080	12,960	6,120	12,020	8,164	3,855	15,502	10,530	4,972	9,921	6,739	3,182	11,925	8,100	3,825	7,751	5,265	2,486	
105	70	12,960	12,960	0	8,164	8,164	0	10,530	10,530	0	6,739	6,739	0	8,100	8,100	0	5,265	5,265	0
65	12,960	12,960	0	8,164	8,164	0	10,530	10,530	0	6,739	6,739	0	8,100	8,100	0	5,265	5,265	0	
80	28,080	10,800	17,280	17,690	6,804	10,886	22,815	8,775	14,040	14,601	5,616	8,985	17,550	6,750	10,800	11,407	4,387	7,019	
75	19,080	10,800	8,280	12,020	6,804	5,216	15,502	8,775	6,727	9,921	5,616	4,305	11,925	6,750	5,175	7,751	4,387	3,363	
100	70	10,980	10,800	180	6,917	6,804	113	8,921	8,775	146	5,709	5,616	93	6,862	6,750	112	4,460	4,387	73
65	10,800	10,800	0	6,804	6,804	0	8,775	8,775	0	5,616	5,616	0	6,750	6,750	0	4,387	4,387	0	
60	10,800	10,800	0	6,804	6,804	0	8,775	8,775	0	5,616	5,616	0	6,750	6,750	0	4,387	4,387	0	
80	28,080	8,640	19,440	17,690	5,443	12,247	22,815	7,020	15,795	14,601	4,492	10,108	17,550	5,400	12,150	11,407	3,510	7,897	
75	19,080	8,640	10,440	12,020	5,443	6,577	15,502	7,020	8,482	9,921	4,492	5,428	11,925	5,400	6,525	7,751	3,510	4,241	
95	70	10,980	8,640	2,340	6,917	5,443	1,474	8,921	7,020	1,901	5,709	4,492	1,216	6,862	5,400	1,462	4,460	3,510	950
65	8,640	8,640	0	5,443	5,443	0	7,020	7,020	0	4,492	4,492	0	5,400	5,400	0	3,510	3,510	0	
60	8,640	8,640	0	5,443	5,443	0	7,020	7,020	0	4,492	4,492	0	5,400	5,400	0	3,510	3,510	0	
80	28,080	6,480	21,600	17,690	4,082	13,608	22,815	5,265	17,550	14,601	3,369	11,232	17,550	4,050	13,500	11,407	2,632	8,774	
75	19,080	6,480	12,600	12,020	4,082	7,938	15,502	5,265	10,237	9,921	3,369	6,552	11,925	4,050	7,875	7,751	2,632	5,118	
90	70	10,980	6,480	4,500	6,917	4,082	2,835	5,921	5,265	3,656	5,709	3,369	2,340	6,862	4,050	2,812	4,460	2,632	1,828
65	6,480	6,480	0	4,082	4,082	0	8,265	5,265	0	3,369	3,369	0	4,050	4,050	0	2,632	2,632	0	
60	6,480	6,480	0	4,082	4,082	0	5,265	5,265	0	3,369	3,369	0	4,050	4,050	0	2,632	2,632	0	
80	28,080	4,320	23,760	17,690	2,721	14,968	22,815	3,510	19,305	14,601	2,246	12,355	17,550	2,700	14,850	11,407	1,755	9,652	
75	19,080	4,320	14,760	12,020	2,721	9,298	15,502	3,510	11,992	9,921	2,246	7,675	11,925	2,700	9,225	7,751	1,755	5,996	
85	70	10,980	4,320	6,660	6,917	2,721	4,195	8,921	3,510	5,411	5,709	2,246	3,463	6,862	2,700	4,162	4,460	1,755	2,705
65	4,320	4,320	0	2,721	2,721	0	3,510	3,510	0	2,246	2,246	0	2,700	2,700	0	1,755	1,755	0	
60	4,320	4,320	0	2,721	2,721	0	3,510	3,510	0	2,246	2,246	0	2,700	2,700	0	1,755	1,755	0	
75	19,080	2,160	16,920	12,020	1,360	10,659	15,502	1,755	13,747	9,921	1,123	8,798	11,925	1,350	10,575	7,751	877	6,873	
70	10,980	2,160	8,820	6,917	1,360	5,556	8,921	1,755	7,166	5,709	1,123	4,586	6,862	1,350	5,512	4,460	877	3,583	
65	3,780	2,160	1,620	2,381	1,360	1,020	3,071	1,755	1,316	1,965	1,123	842	2,362	1,350	1,012	1,535	877	658	
60	2,160	2,160	0	1,360	1,360	0	1,755	1,755	0	1,123	1,123	0	1,350	1,350	0	877	877	0	
70	10,980	0	10,980	6,917	0	6,917	8,921	0	8,921	5,709	0	5,709	6,862	0	6,862	4,460	0	4,460	
75	65	3,780	0	3,780	2,381	0	2,381	3,071	0	3,071	1,965	0	1,965	2,362	0	2,362	1,535	0	1,535
60	0	0	0	0	0	0	0	0	0	0	0	0	0	0	0	0	0	0	0

Legend:

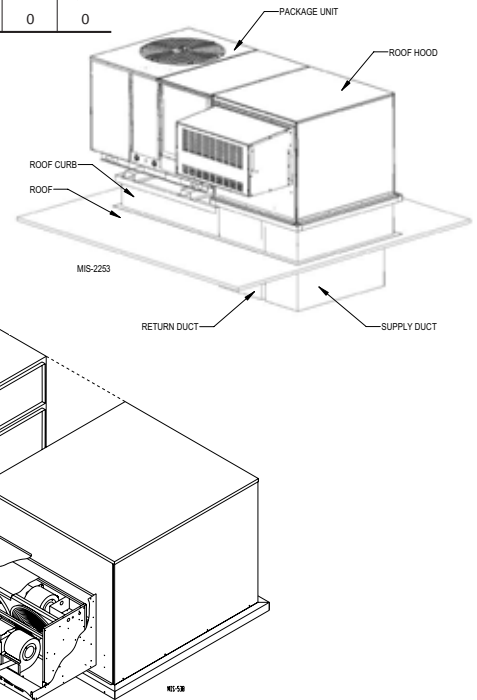
- VLT = Ventilation Load - Total
- VLS = Ventilation Load - Sensible
- VLL = Ventilation Load - Latent
- HRT = Heat Recovery - Total
- HRS = Heat Recovery - Sensible
- HRL = Heat Recovery - Latent
- WVL = Winter Ventilation Load
- WHR = Winter Heat Recovery

Winter Heating Performance (Indoor Design Conditions 70°F DB)						
Ambient O.D.	VENTILATION RATE					
	400 CFM 75% Efficiency		325 CFM 76% Efficiency		250 CFM 77% Efficiency	
DB°F	WVL	WHR	WVL	WHR	WVL	WHR
65	2,160	1,620	1,755	1,333	1,350	1,039
60	4,320	3,240	3,510	2,667	2,700	2,079
55	6,480	4,860	5,265	4,001	4,050	3,118
50	8,640	6,480	7,020	5,335	5,400	4,158
45	10,800	8,100	8,775	6,669	6,750	5,197
40	12,960	9,720	10,530	8,002	8,100	6,237
35	15,120	11,340	12,285	9,336	9,450	7,276
30	17,280	12,960	14,040	10,670	10,800	8,316
25	19,440	14,580	15,795	12,004	12,150	9,355
20	21,600	16,200	17,550	13,338	13,500	10,395
15	23,760	17,820	19,305	14,671	14,850	11,434

UNIT DIMENSIONS

Model	Width	Depth	Height	Shipping Weight
ERVR	* 32-3/4	18-3/4	18-3/4	125 lbs.

* Does not include 1" mounting brackets on each side of ERVR.



Bard Manufacturing Company, Inc.
Bryan, Ohio 43506
www.bardhvac.com

Due to our continuous product improvement policy, all specifications subject to change without notice.

Before purchasing this appliance, read important energy cost and efficiency information available from your retailer.

Form No.
S3384
May, 2012

Supersedes: 1010