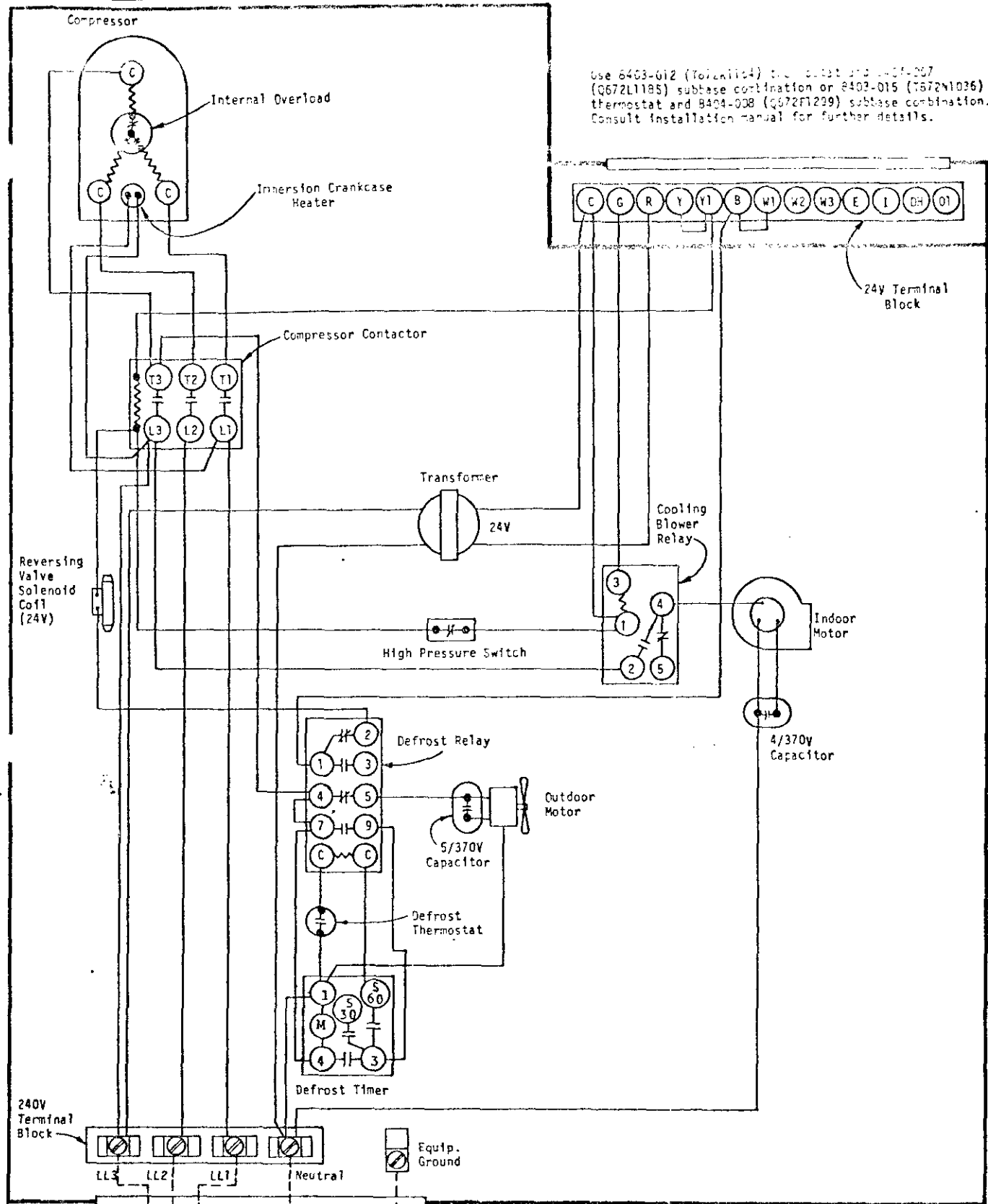


Use 8403-012 (Tolcan1124) thermostat and 8401-007 (Q672L1185) subbase combination or 8403-015 (7672N1036) thermostat and 8404-008 (Q672F1299) subbase combination. Consult installation manual for further details.



USE COPPER OR ALUMINUM WIRE

Factory Wiring ———  
Field Wiring - - - - -

MODEL PH36-2  
HEAT PUMP