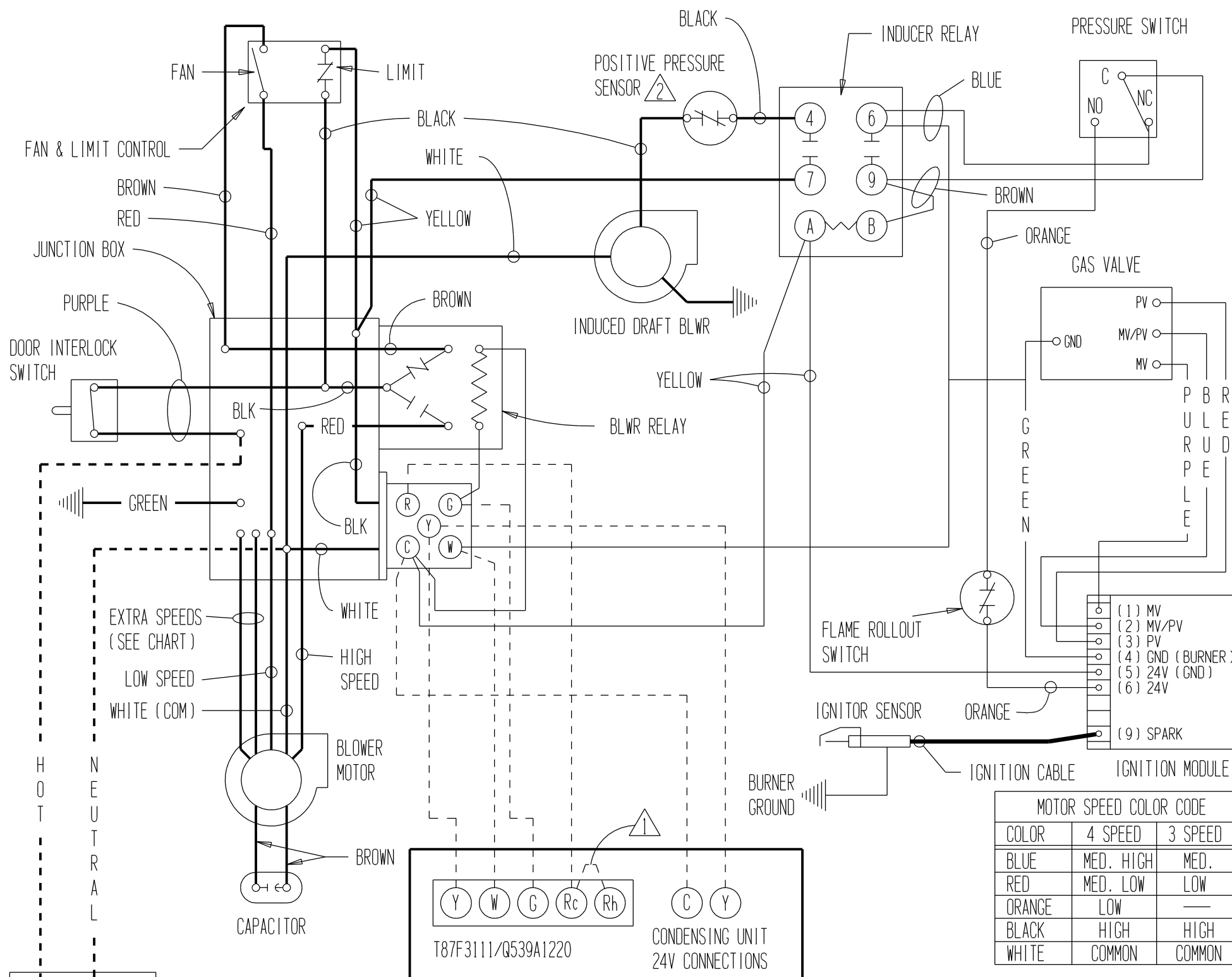


CONNECTION DIAGRAM

DANGER: ELECTRICAL SHOCK HAZARD,
DISCONNECT POWER BEFORE SERVICING.



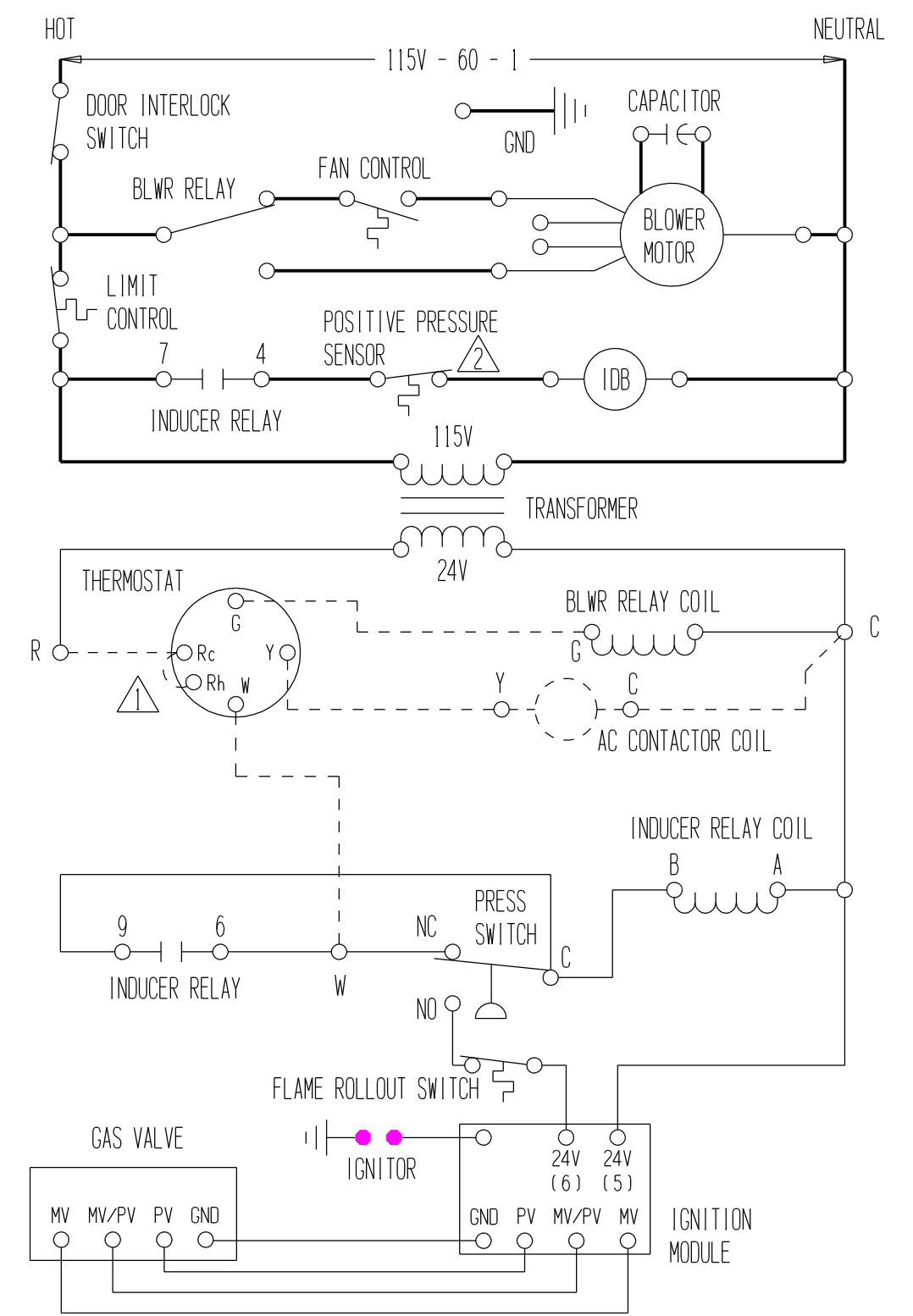
| MOTOR SPEED COLOR CODE | | |
|------------------------|-----------|---------|
| COLOR | 4 SPEED | 3 SPEED |
| BLUE | MED. HIGH | MED. |
| RED | MED. LOW | LOW |
| ORANGE | LOW | — |
| BLACK | HIGH | HIGH |
| WHITE | COMMON | COMMON |

- ⚠️ JUMPER Rc-Rh REQUIRED ON Q539A1220.
- ⚠️ FIELD INSTALLED, OPTIONAL POSITIVE PRESSURE SENSOR REQUIRED ONLY FOR COMMON VENTING INSTALLATIONS.

USE COPPER CONDUCTORS ONLY

| | FACTORY WIRING | FIELD WIRING |
|--------------|----------------|--------------|
| LOW VOLTAGE | — | --- |
| HIGH VOLTAGE | — | ---- |

LADDER DIAGRAM



IF ANY OF THE ORIGINAL WIRE AS SUPPLIED WITH THE APPLIANCE MUST BE REPLACED, IT MUST BE REPLACED WITH WIRING MATERIAL HAVING A TEMPERATURE RATING OF AT LEAST 105°C. EXCEPT THE IGNITION CABLE WHICH IS 250°C. HIGH VOLTAGE CABLE.