

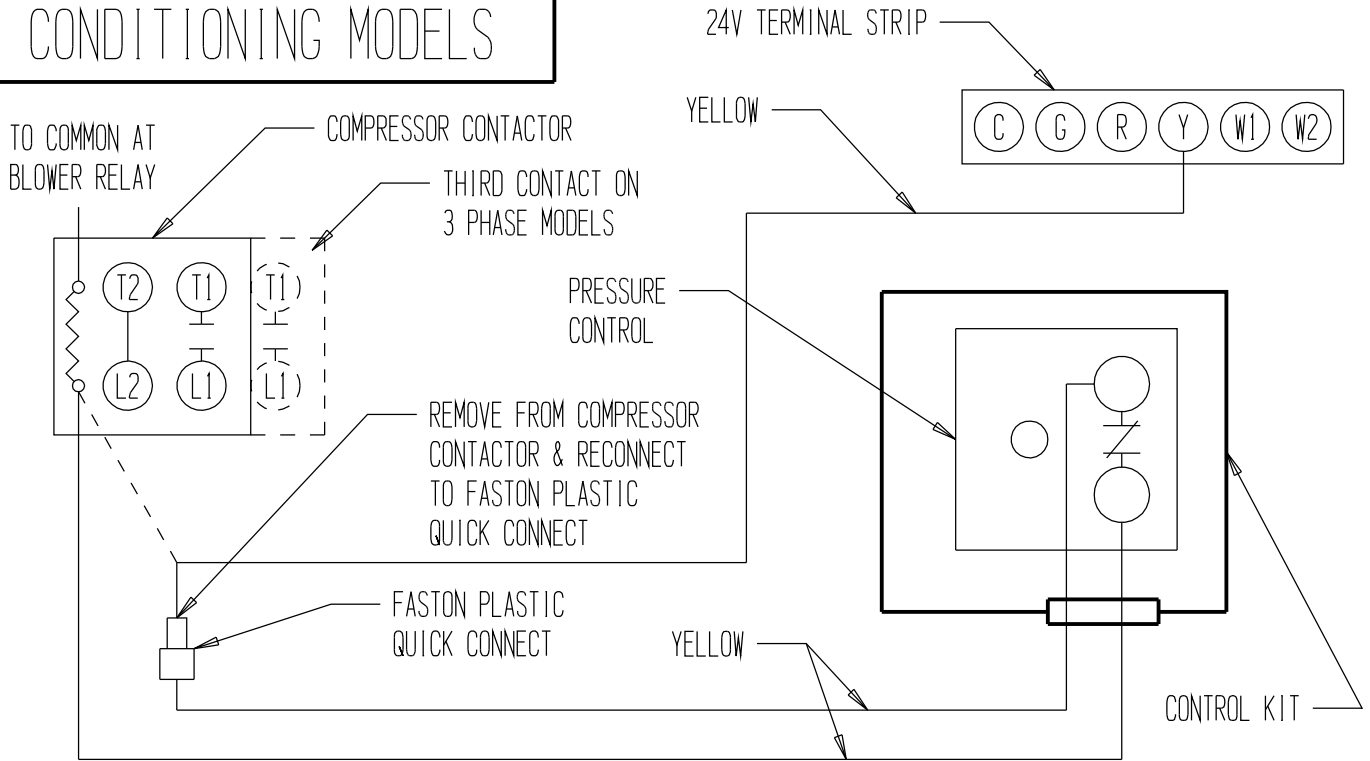
CONTROL KIT TO BASIC UNIT CONNECTION DIAGRAM

- FACTORY WIRE TO BE REMOVED
- - - - - FACTORY WIRE TO BE RECONNECTED
- ===== FACTORY WIRING
- ===== FIELD WIRING CONNECTION

- THIS OPTIONAL CONTROL ACCESSORY HAS BEEN ADDED TO THIS UNIT -

- IF ECONOMIZER IS INSTALLED, CONTROL KIT IS LOCATED BEHIND COMPRESSOR PARTITION IN THE RETURN AIR OPENING -

AIR CONDITIONING MODELS



HEAT PUMP MODELS

