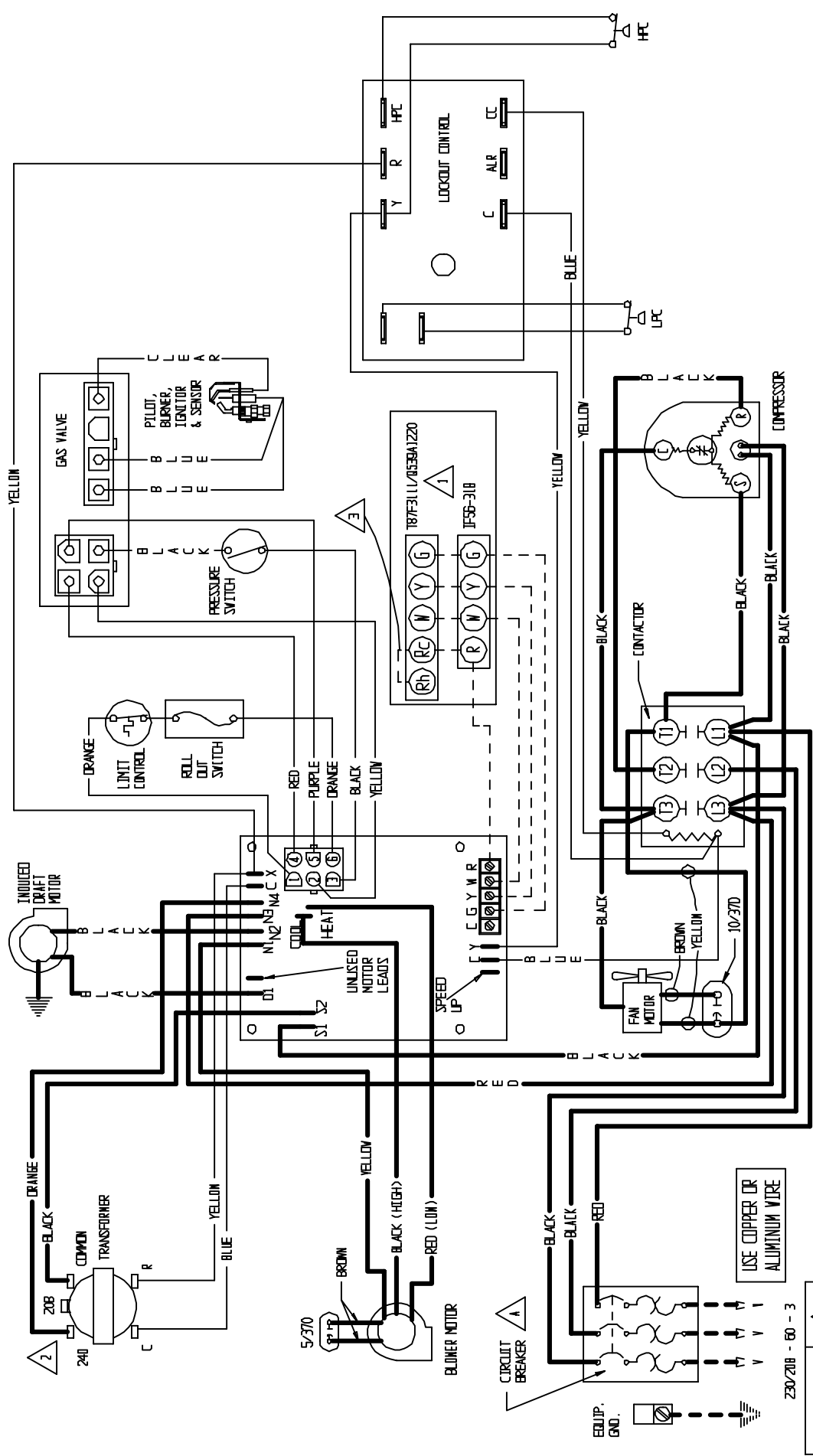


CONNECTION DIAGRAM

**DANGER: ELECTRICAL SHOCK HAZARD,
DISCONNECT POWER BEFORE SERVICING**



IF ANY OF THE ORIGINAL WIRE AS SUPPLIED WITH THE APPLIANCE MUST BE REPLACED, IT MUST BE REPLACED WITH WIRING MATERIAL HAVING A TEMPERATURE RATING OF AT LEAST 105°C EXCEPT THE IGNITION CABLE WHICH IS 250°C HIGH VOLTAGE CABLE.

FACTORY WIRING	FIELD WIRING
Low Voltage	-----
High Voltage	-----

MODEL	CIRCUIT BREAKER
V4630-B54C	30A
V4640D-B54C	30A

230/208 - 60 - 3

- 1 SET HEAT ANTICIPATOR AT .6 A
- 2 FOR 208V OPERATION MOVE THIS WIRE TO 208V TRANSFORMER TAP
- 3 AID JUMPER RE - RH