

COMPONENT CODE

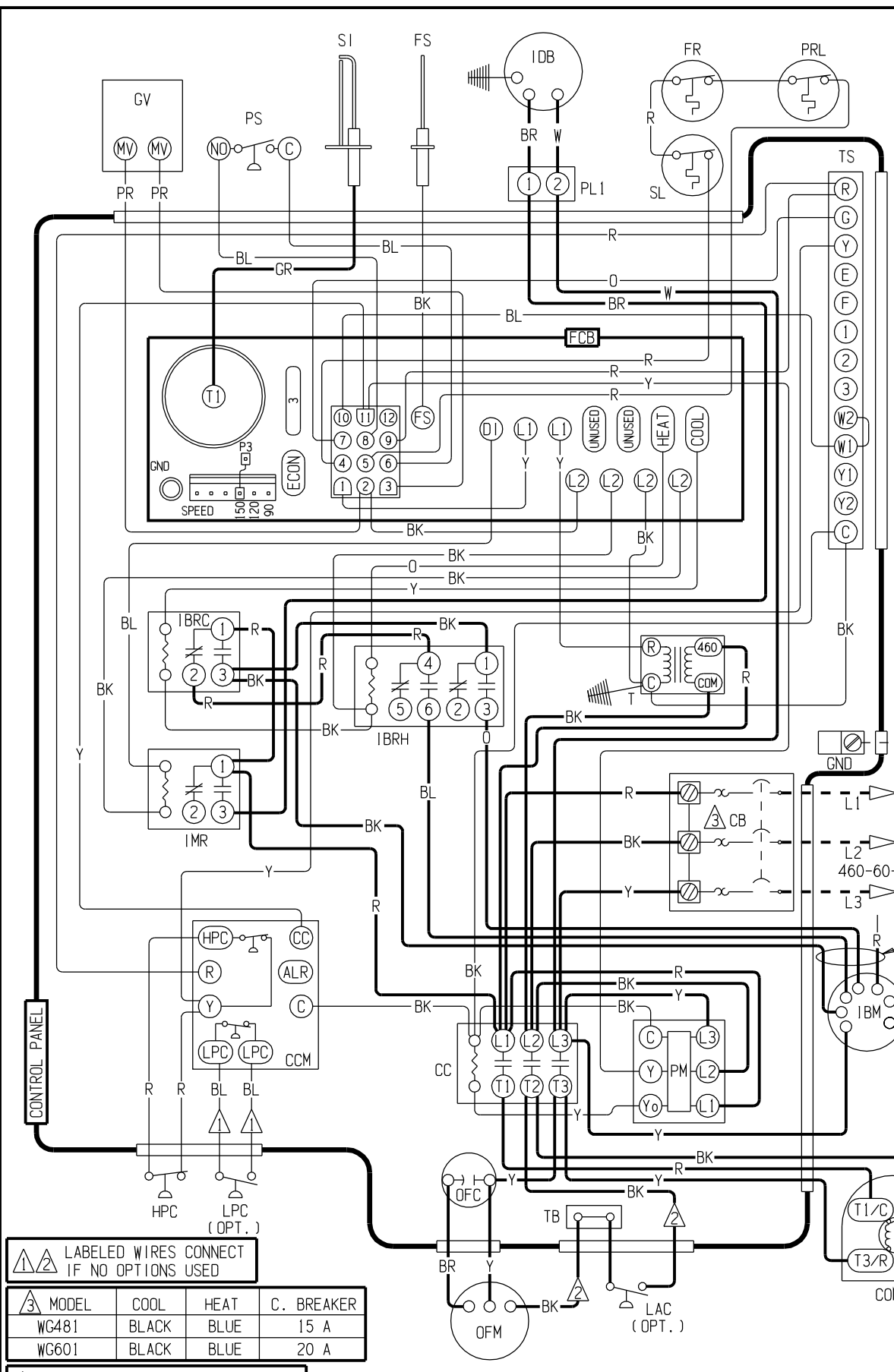
| | |
|------|--------------------------|
| CB | CIRCUIT BREAKER |
| COMP | COMPRESSOR |
| CC | COMPRESSOR CONTACTOR |
| CCM | COMP. CONTROL MODULE |
| FCB | FURNACE CONTROL BOARD |
| FR | FLAME ROLLOUT |
| FS | FLAME SENSOR |
| GND | GROUND |
| GV | GAS VALVE |
| HPC | HIGH PRESSURE CONTROL |
| IBC | INDOOR BLOWER CAPACITOR |
| IBM | INDOOR BLOWER MOTOR |
| IBRC | INDOOR BLOWER RELAY COOL |
| IBRH | INDOOR BLOWER RELAY HEAT |
| IDB | INDUCED DRAFT BLOWER |
| IMR | INDUCED MOTOR RELAY |
| LAC | LOW AMBIENT CONTROL |
| LPC | LOW PRESSURE CONTROL |
| OFC | OUTDOOR FAN CAPACITOR |
| OFM | OUTDOOR FAN MOTOR |
| PL1 | 2 PIN PLUG |
| PM | PHASE MONITOR |
| PRL | PRIMARY LIMIT |
| PS | PRESSURE SWITCH |
| SI | SPARK IGNITER |
| SL | SECONDARY LIMIT |
| T | TRANSFORMER |
| TB | TERMINAL BLOCK |
| TS | TERMINAL STRIP |

USE COPPER OR ALUMINUM WIRE

⚠ DANGER
 * ELECTRIC SHOCK HAZARD
 * DISCONNECT POWER BEFORE SERVICING

WARNING
 CONSULT INSTALLATION INSTRUCTIONS PRIOR TO CHANGING BLOWER SPEEDS ON 460V BLOWER MOTOR

| COLOR CODE | |
|------------|--------|
| BK | BLACK |
| BL | BLUE |
| BR | BROWN |
| GR | GRAY |
| O | ORANGE |
| PR | PURPLE |
| R | RED |
| W | WHITE |
| Y | YELLOW |



⚠ LABELED WIRES CONNECT IF NO OPTIONS USED

| MODEL | COOL | HEAT | C. BREAKER |
|-------|-------|------|------------|
| WG481 | BLACK | BLUE | 15 A |
| WG601 | BLACK | BLUE | 20 A |

⚠ ALL UNUSED WIRES ARE TAPED OFF

IF ANY OF THE ORIGINAL WIRE AS SUPPLIED WITH THE APPLIANCE MUST BE REPLACED, IT MUST BE REPLACED WITH WIRING MATERIAL HAVING A TEMPERATURE RATING OF AT LEAST 105°C EXCEPT THE IGNITION CABLE WHICH IS 250° HIGH VOLTAGE CABLE.

| WIRING CODE | |
|-------------|-----------------|
| 460 VAC | FACTORY ————— |
| 460 VAC | FIELD - - - - - |
| 24 VAC | FACTORY ————— |
| 24 VAC | FIELD - - - - - |