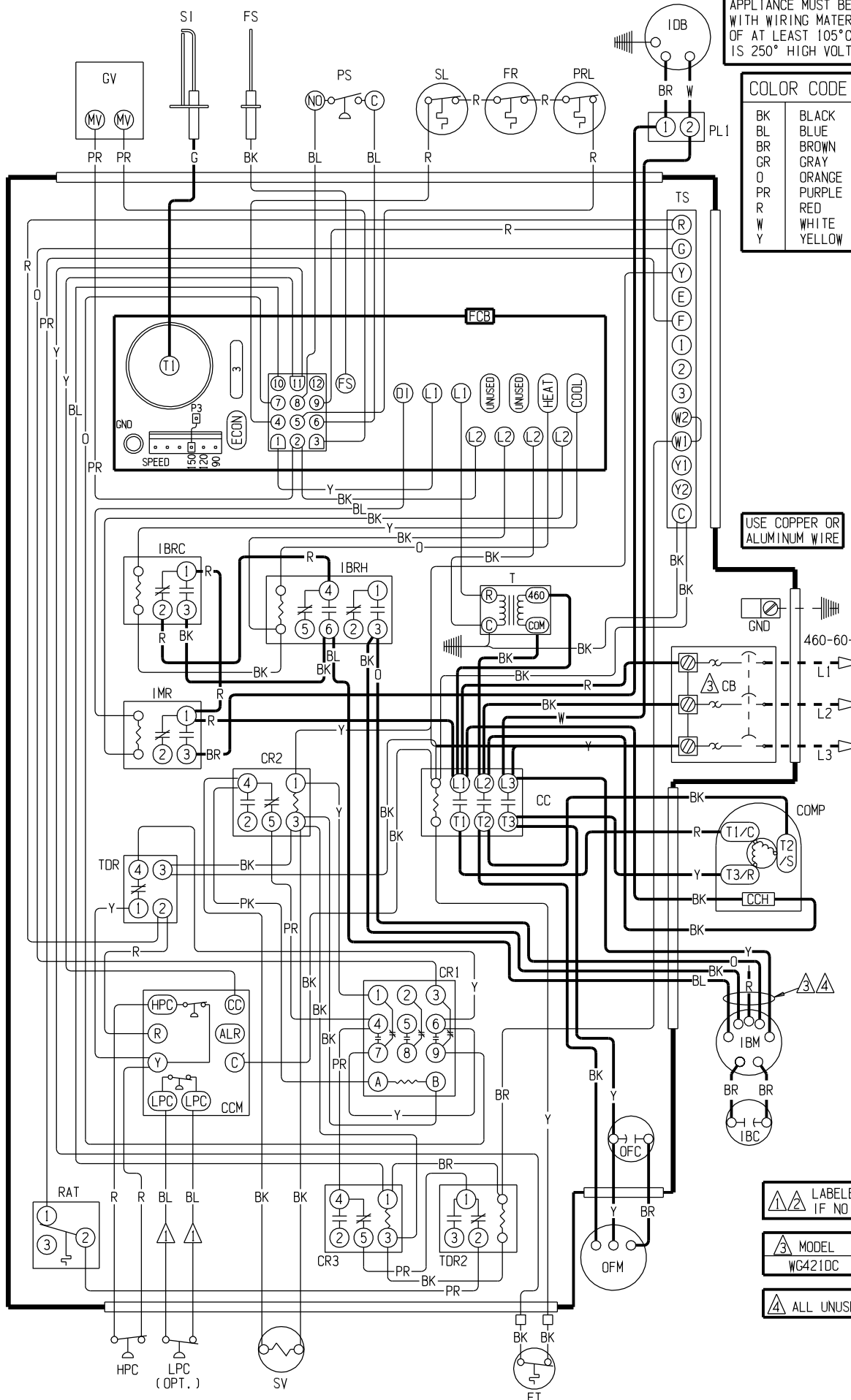


IF ANY OF THE ORIGINAL WIRE AS SUPPLIED WITH THE APPLIANCE MUST BE REPLACED, IT MUST BE REPLACED WITH WIRING MATERIAL HAVING A TEMPERATURE RATING OF AT LEAST 105°C EXCEPT THE IGNITION CABLE WHICH IS 250° HIGH VOLTAGE CABLE.



**COLOR CODE**

BK	BLACK
BL	BLUE
BR	BROWN
GR	GRAY
O	ORANGE
PR	PURPLE
R	RED
W	WHITE
Y	YELLOW

**COMPONENT CODE**

CB	CIRCUIT BREAKER
COMP	COMPRESSOR
CC	COMPRESSOR CONTACTOR
CCH	CRANKCASE HEATER
CCM	COMP. CONTROL MODULE
CR1	CONTROL RELAY #1
CR2	CONTROL RELAY #2
CR3	CONTROL RELAY #3
FCB	FURNACE CONTROL BOARD
FR	FLAME ROLLOUT
FS	FLAME SENSOR
FT	FREEZE THERMOSTAT
GND	GROUND
GV	GAS VALVE
HPC	HIGH PRESSURE CONTROL
IBC	INDOOR BLOWER CAPACITOR
IBM	INDOOR BLOWER MOTOR
IBRC	INDOOR BLOWER RELAY COOL
IBRH	INDOOR BLOWER RELAY HEAT
IDB	INDUCED DRAFT BLOWER
IMR	INDUCED MOTOR RELAY
LPC	LOW PRESSURE CONTROL
OFC	OUTDOOR FAN CAPACITOR
OFM	OUTDOOR FAN MOTOR
PL1	2 PIN PLUG
PM	PHASE MONITOR
PRL	PRIMARY LIMIT
PS	PRESSURE SWITCH
RAT	RETURN AIR THERMOSTAT
S1	SPARK IGNITER
SL	SECONDARY LIMIT
SV	SOLENOID VALVE
T	TRANSFORMER
TDR1	TIME DELAY RELAY #1
TDR2	TIME DELAY RELAY #2
TS	TERMINAL STRIP

USE COPPER OR ALUMINUM WIRE

**WIRING CODE**

460 VAC	FACTORY	—————
460 VAC	FIELD	- - - - -
24 VAC	FACTORY	—————
24 VAC	FIELD	- - - - -

**⚠ DANGER**  
 \* ELECTRIC SHOCK HAZARD  
 \* DISCONNECT POWER BEFORE SERVICING

⚠ Labeled wires connect if no options used

MODEL	COOL	HEAT	C. BREAKER
WG421DC	BLACK	BLUE	15 A

⚠ ALL UNUSED WIRES ARE TAPED OFF