

COMPONENT CODE	
ALR	ALARM RELAY
CB1	CIRCUIT BREAKER #1
CB2	CIRCUIT BREAKER #2
CC	COMPRESSOR CONTACTOR
CDM	COMPRESSOR CONTROL MODULE
CCM	COMPRESSOR
DC	DUAL CAN CAPACITOR
END	EQUIPMENT GROUND
HI	HEAT STRIP #1
H2	HEAT STRIP #2
HC1	HEATER CONTACTOR #1
HC2	HEATER CONTACTOR #2
HPC	HIGH PRESSURE CONTROL
IBC	INDOOR BLOWER CAPACITOR
IBH	INDOOR BLOWER MOTOR
IBR	INDOOR BLOWER RELAY
LAC	LOW AMBIENT CONTROL
LPC	LOW PRESSURE CONTROL
LS	LIMIT SWITCH
OFM	OUTDOOR FAN MOTOR
PL1	PLUG #1
SK	START KIT
T	TRANSFORMER
TB, TB2	TERMINAL BLOCK
TBL	LOW VOLTAGE TERMINAL BLOCK
TOD	THERMAL CUT-OFF

▲ Labeled wires connect if no options used.

▲ Move red wire to 208V tap for 208V operation

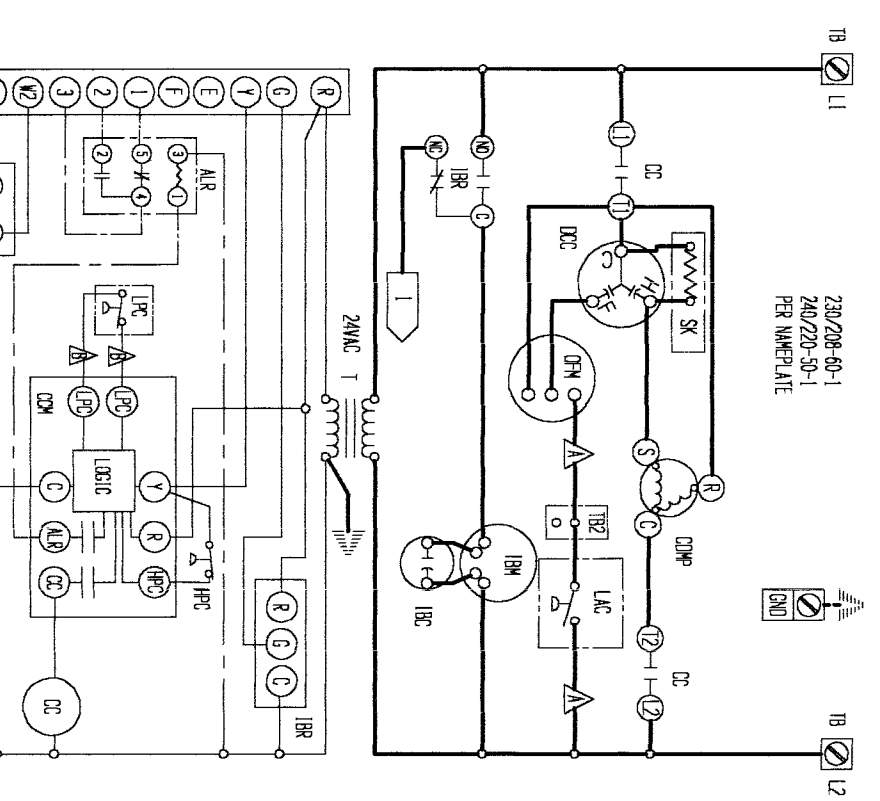
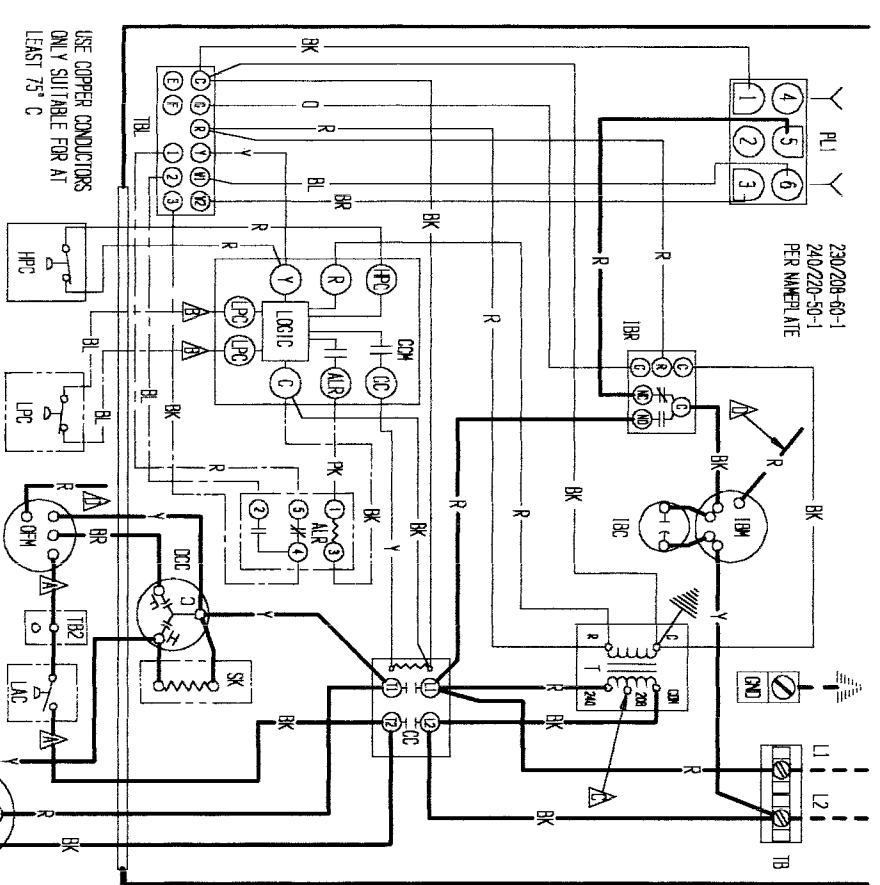
▲ Red (low) black (high) where applicable

FACTORY STD.		FIELD		OPTIONAL	
BR	BLACK	Y	YELLOW	T	TAN
R	BROWN	G	GREEN	PK	PINK
0	RED	BL	BLUE	L	LAVENDER
	ORANGE	W	WHITE		

COLOR CODE	
V	VIOLET
PR	PURPLE
GR	GRAY
SL	SLATE

**BAIRD MFG. CO.**  
4095-128 B



USE COPPER CONDUCTORS ONLY SUITABLE FOR AT LEAST 75° C