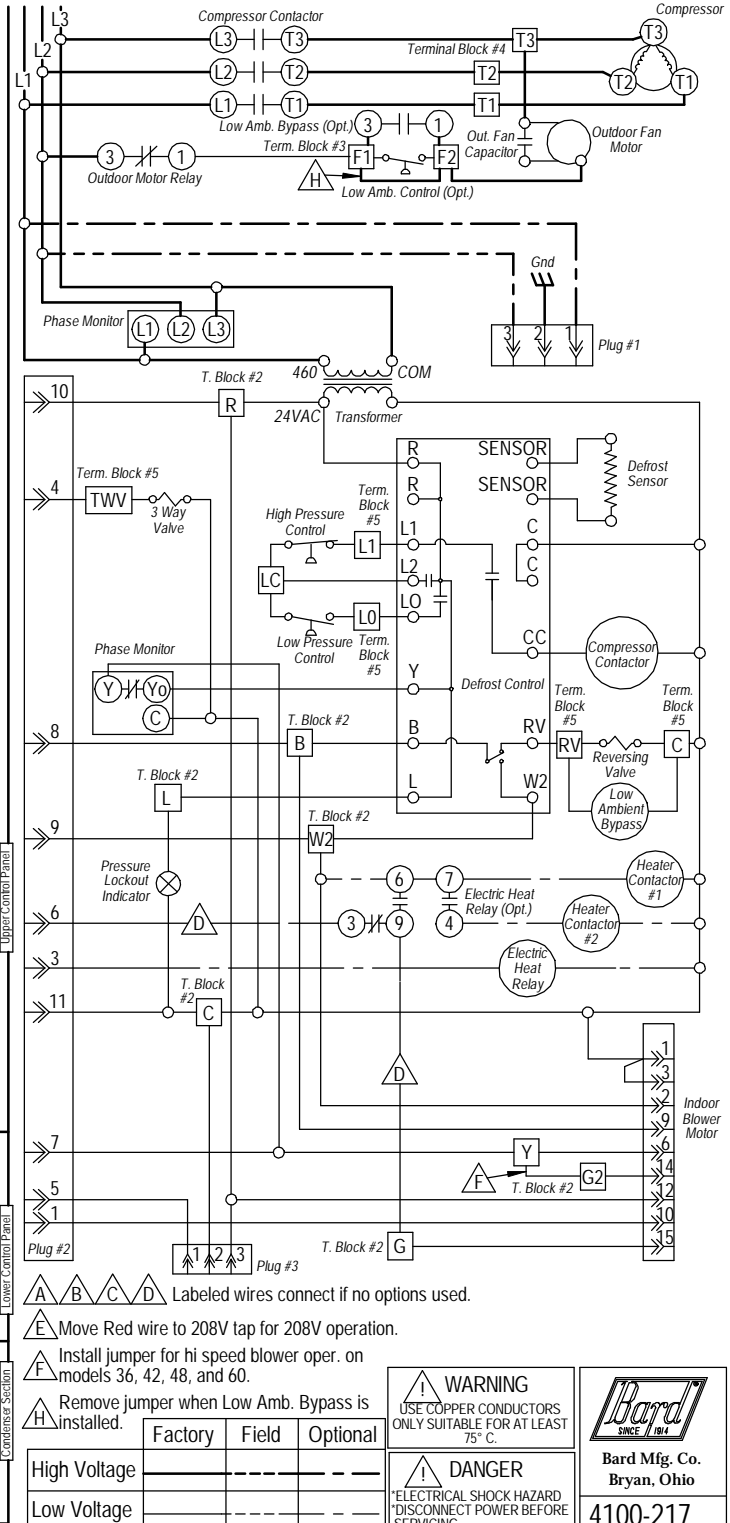
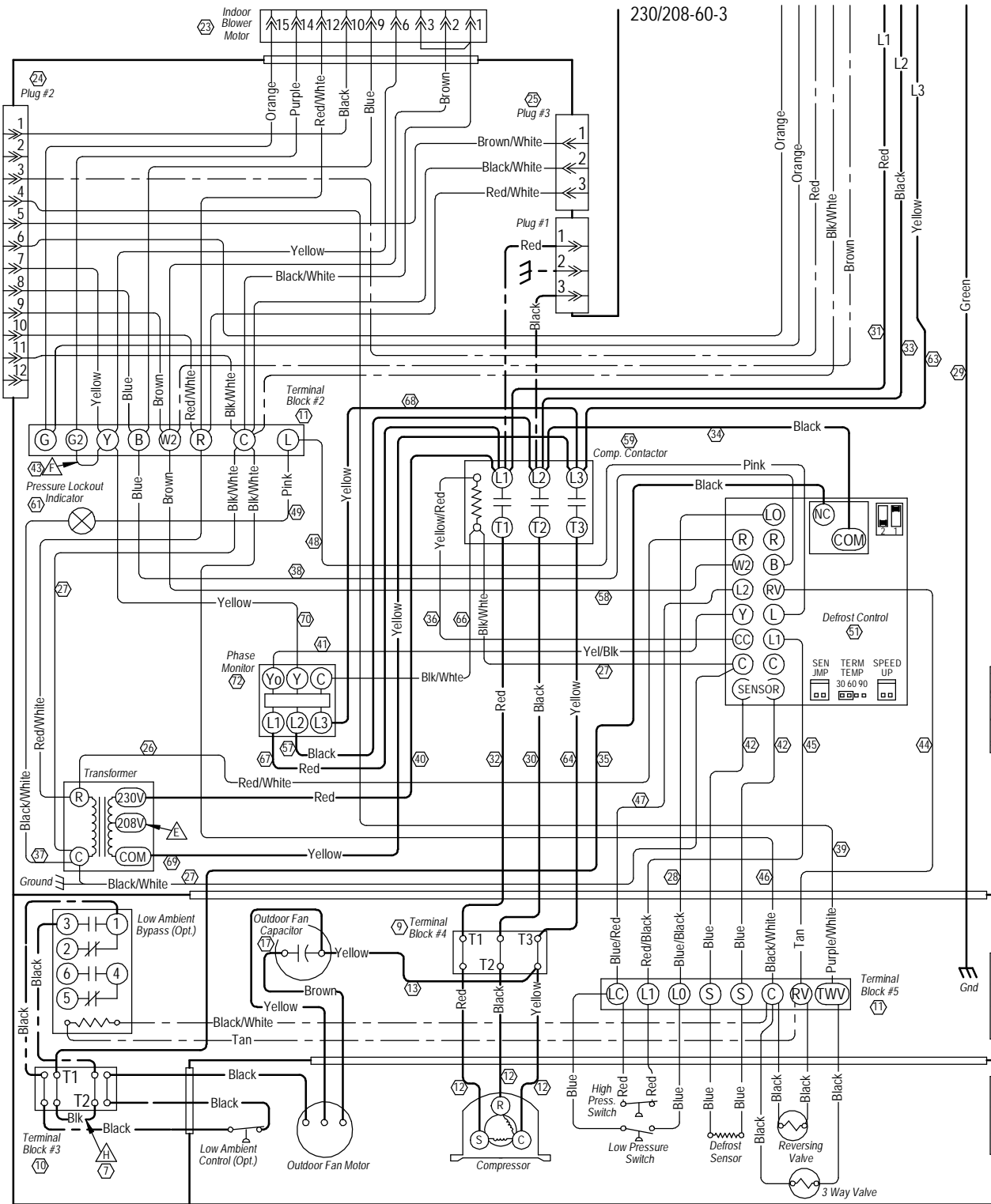


230/208-60-3



- A** Labeled wires connect if no options used.
- E** Move Red wire to 208V tap for 208V operation.
- F** Install jumper for hi speed blower oper. on models 36, 42, 48, and 60.
- H** Remove jumper when Low Amb. Bypass is installed.

|  |  |                                      |   |
|--|--|--------------------------------------|---|
| <p><b>WARNING</b></p> <p>USE COPPER CONDUCTORS<br/>ONLY SUITABLE FOR AT LEAST<br/>75° C.</p> | <p><b>DANGER</b></p> <p>ELECTRICAL SHOCK HAZARD<br/>DISCONNECT POWER BEFORE<br/>SERVICING.</p> | <p><b>Bard</b></p> <p>SINCE 1914</p> | <p><b>Bard Mfg. Co.</b><br/>Bryan, Ohio</p> |
|  |  |                                      |   |
| <p>High Voltage</p>  | <p>Low Voltage</p>   | <p>4100-217</p>                      |   |