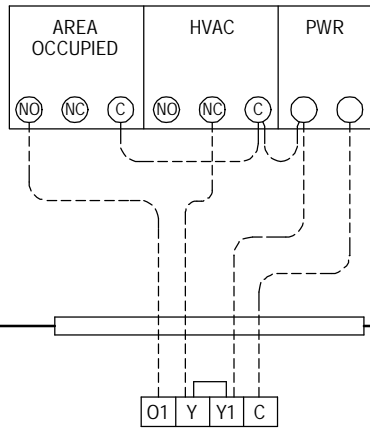


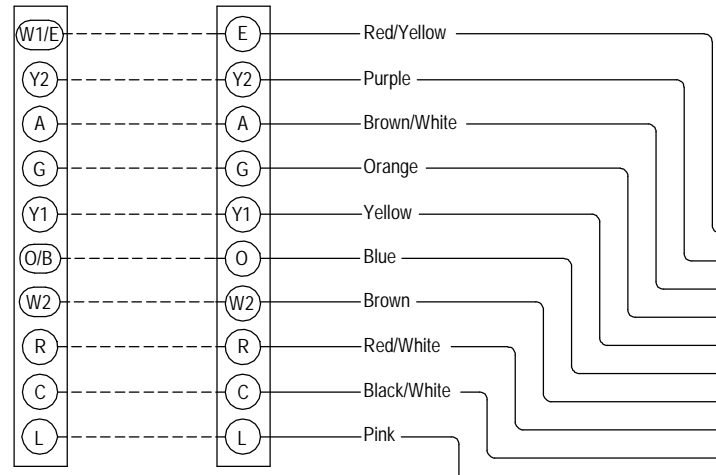
COMPOSITE WIRING DIAGRAM 460/60-3

Optional CS2000A Energy Monitor
(Use With "A" Thermostat Only)



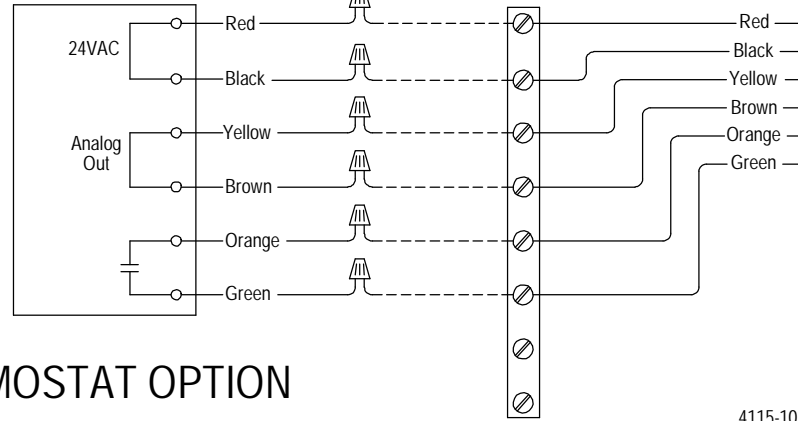
Temp. and Humidity
Controller
Part #8403-060

Low Voltage
Terminal Strip



CO2 Controller
Part #8403-056

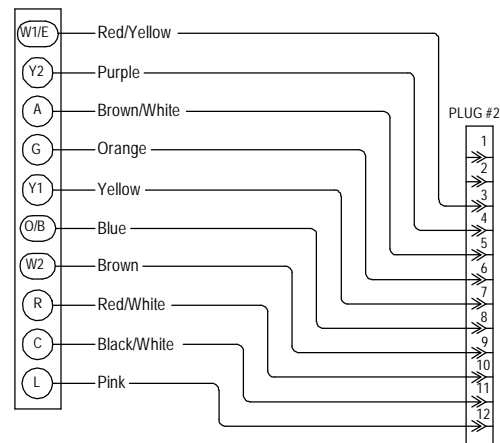
Terminal Strip



"X" THERMOSTAT OPTION

4115-102

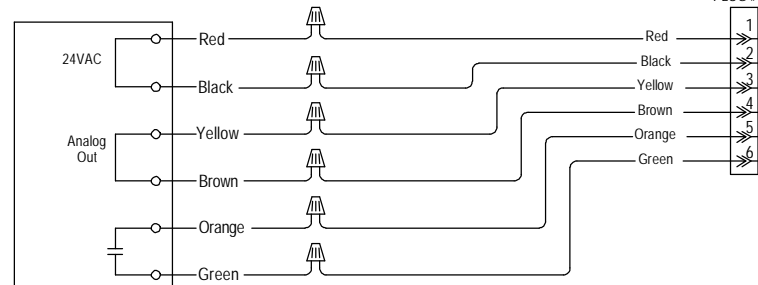
Temp. and Humidity
Controller
Part #8403-060



"D" THERMOSTAT OPTION

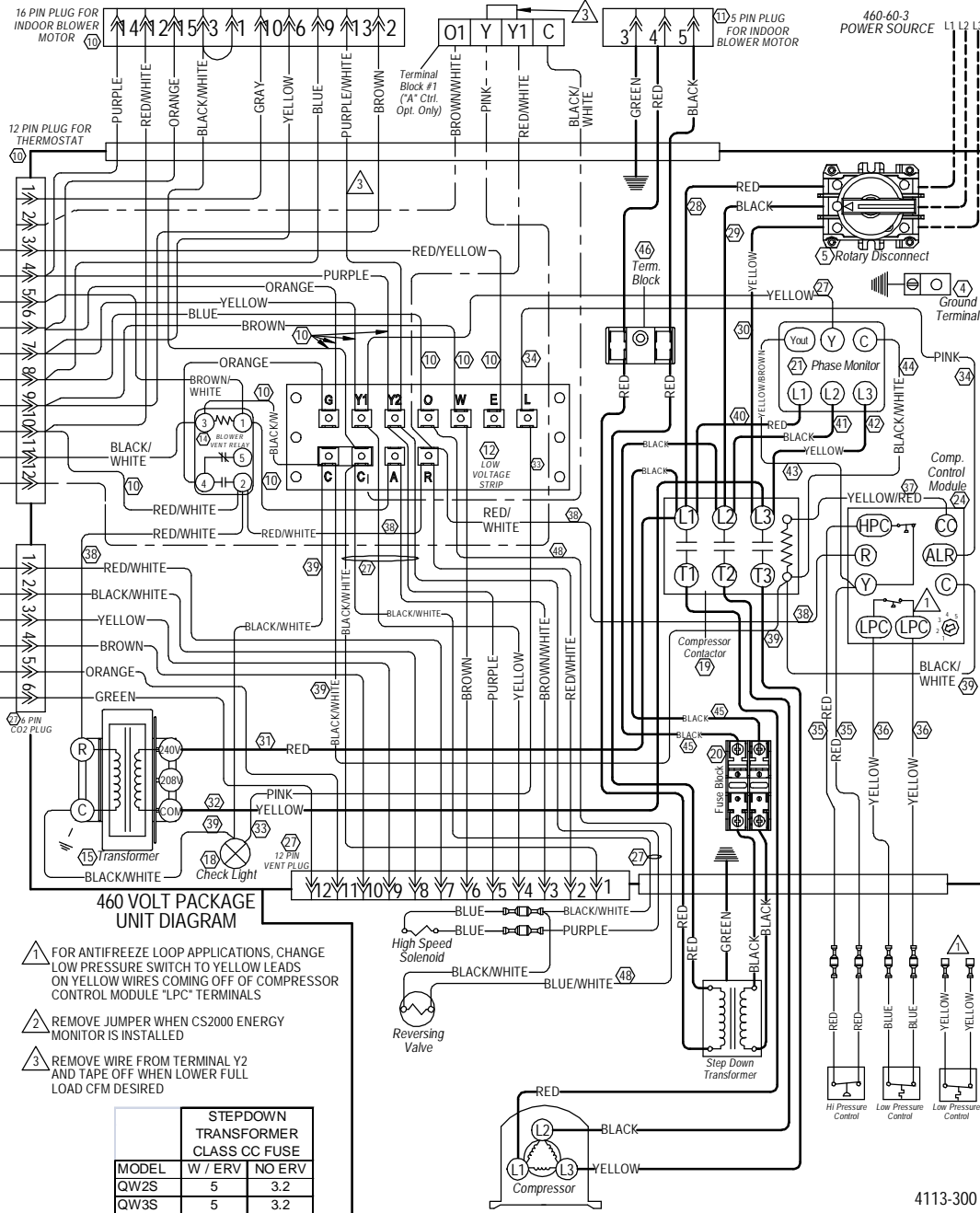
4115-100

Temp. and Humidity
Controller
Part #8403-060



"H" THERMOSTAT OPTION

4115-101



- 1. FOR ANTIFREEZE LOOP APPLICATIONS, CHANGE LOW PRESSURE SWITCH TO YELLOW LEADS ON YELLOW WIRES COMING OFF OF COMPRESSOR CONTROL MODULE "LPC" TERMINALS
- 2. REMOVE JUMPER WHEN CS2000 ENERGY MONITOR IS INSTALLED
- 3. REMOVE WIRE FROM TERMINAL Y2 AND TAPE OFF WHEN LOWER FULL LOAD CFM DESIRED

MODEL	W / ERV	NO ERV
QW2S	5	3.2
QW3S	5	3.2
QW4S	7	3.2
QW5S	7	5

	Factory	Field	Optional
High Voltage			
Low Voltage			

Wire Identification numbers for Bard use only.

DANGER
ELECTRICAL SHOCK HAZARD
DISCONNECT POWER BEFORE
SERVICING.

WARNING
USE COPPER CONDUCTORS
ONLY SUITABLE FOR AT LEAST
75°C.

Bard
Bard Mfg. Co.
Bryan, Ohio
4113C300

4113-300