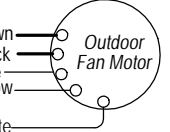
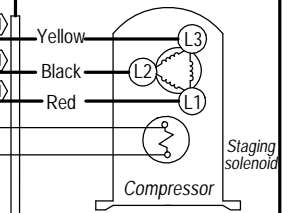


For Vent Wiring or controller/thermostat connections, see literature packet or go to www.bardhvac.com

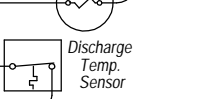
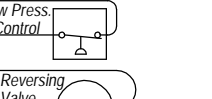
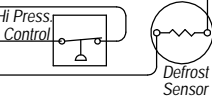
460-60-3
Per Nameplate

L1 L2 L3
-Hi Voltage Field Connection
-Hi Voltage Field Connection
-Hi Voltage Field Connection

Evaporator Section



Low Ambient Control (opt.)



Condenser Section

WARNING
USE COPPER CONDUCTORS
ONLY SUITABLE FOR AT LEAST
75° C.

DANGER
ELECTRICAL SHOCK HAZARD
DISCONNECT POWER BEFORE
SERVICING.

	Factory	Field	Optional
High Voltage			
Low Voltage			

Wire Identification numbers for Bard (99) use only.
4096-386 A

NOTE: JUMPER PLUG MUST BE INSTALLED WHEN NO VENT OPTION IS INSTALLED

Remove wire for (-)10% Airflow Full & Part Loads

Same Letter Designated Wires Connect if Option Not Used
"A" No Control Option
"B" & "C" Only LAC Option