

INSTALLATION INSTRUCTIONS

MODELS

DPH-5BC

**OPTIONAL HORIZONTAL DRAIN PAN
FOR USE WITH MODELS**

BC48B AND BC60B

MANUAL 2100-181 REV.
SUPERSEDES REV.
FILE VOL. I, TAB 6

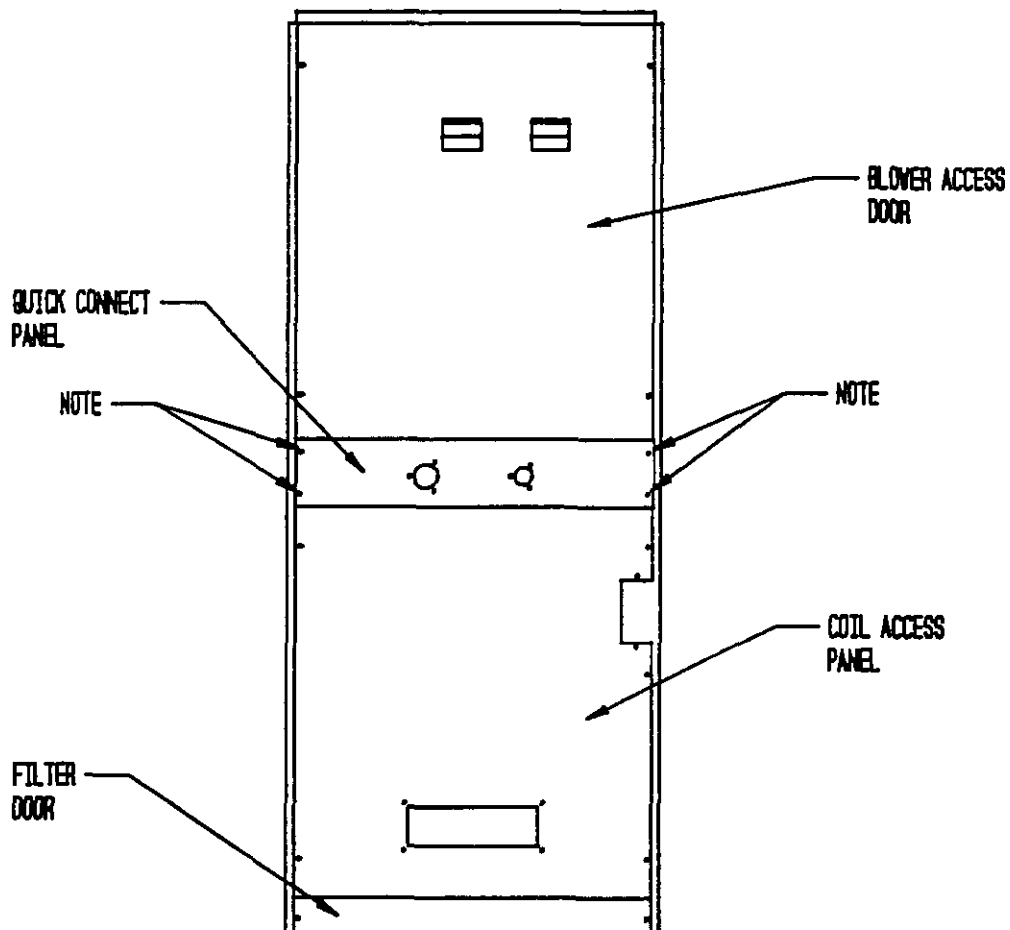
**COPYRIGHT MARCH, 1991
BARD MANUFACTURING COMPANY
BRYAN, OHIO 43506**

1. REMOVE COIL ASSEMBLY FROM BLOWER COIL

The unit is shipped with the coil assembly installed for upflow application. For horizontal applications, the DPH-5BC Horizontal Drain Pan must be installed.

To remove coil assembly, remove blower access door, coil access door, filter door, and remove four screws holding the quick connect panel to the unit. (See Figure 1) The coil assembly is also secured in place by four screws, two on each of the top right and left support angles inside the unit. The DPH-5BC should be installed as close to the job site as possible due to the removal of these four screws that are required for shipping.

Once all screws are removed, the coil assembly can be removed from the unit with the quick connect panel.



NOTE: Remove these four screws on quick connect panel only.

2. SECURE COIL ASSEMBLY TO HORIZONTAL DRAIN PAN

Set the coil assembly with the quick connect and drain connections up and remove two screws holding access panel to assembly. (See Figure 2)

Install DPH-5BC Horizontal Drain Pan to coil assembly and secure with five screws. (See Figure 2A)

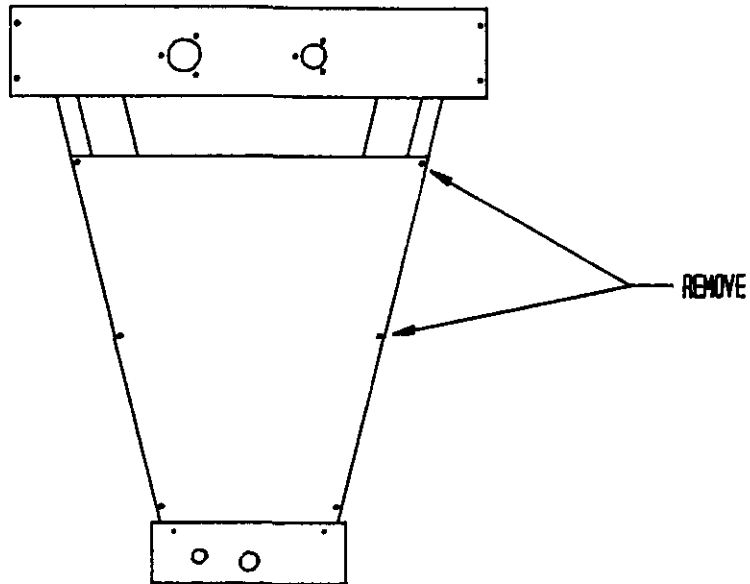


FIGURE 2

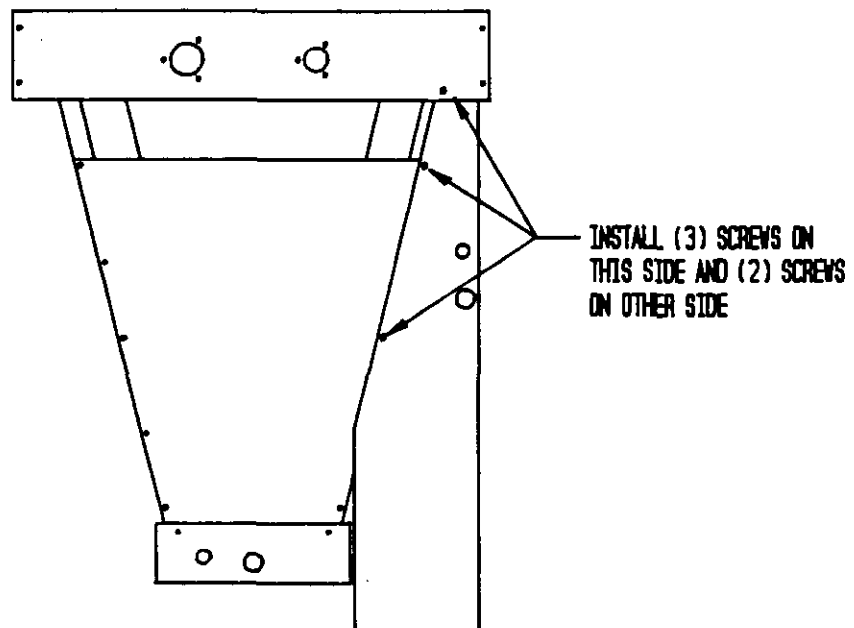


FIGURE 2A

3. INSTALL HORIZONTAL COIL ASSEMBLY INTO UNIT

Before coil assembly can be installed into blower coil, one counterflow coil support angle located on the side of the unit must be removed by removing four screws on the side of the unit. (See Figure 3)

Coil assembly can now be installed and panels secured to blower coil for unit operation. (See Figure 3A)

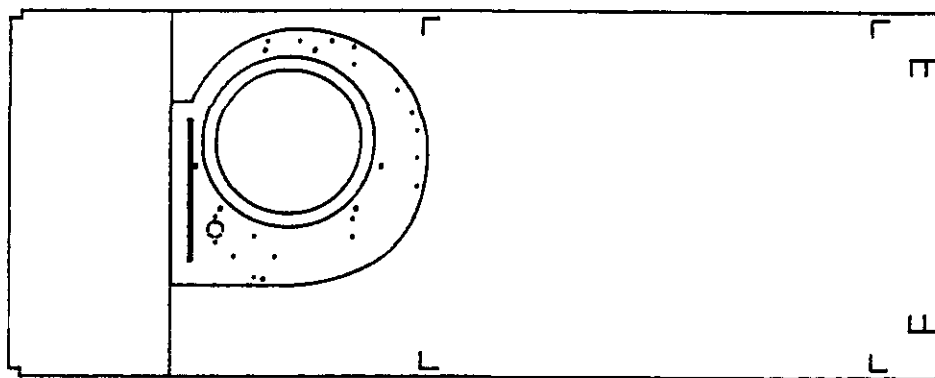


FIGURE 3

REMOVE THIS COIL
SUPPORT ANGLE

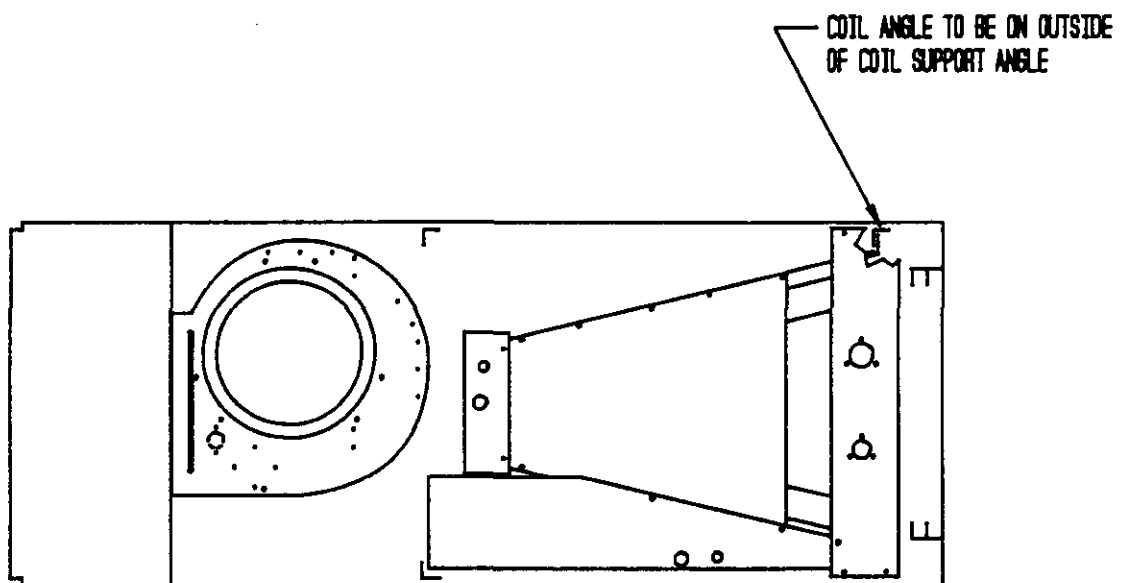


FIGURE 3A

