
INSTALLATION INSTRUCTIONS

Circuit Breaker Kits

Models:

WMCB-01B	WMCB-02A
WMCB-02B	WMCB-03A
WMCB-03B	WMCB-04A
WMCB-04B	WMCB-05A
WMCB-05B	WMCB-06A
WMCB-06B	WMCB-07A
WMCB-07B	WMCB-08A
WMCB-08B	WMCB-09A

Pull Disconnect Kit

Model:

WMPD-01C



Bard Manufacturing Company, Inc.
Bryan, Ohio 43506
www.bardhvac.com

Manual: 2100-215D
Supersedes: 2100-215C
Date: 5-9-24

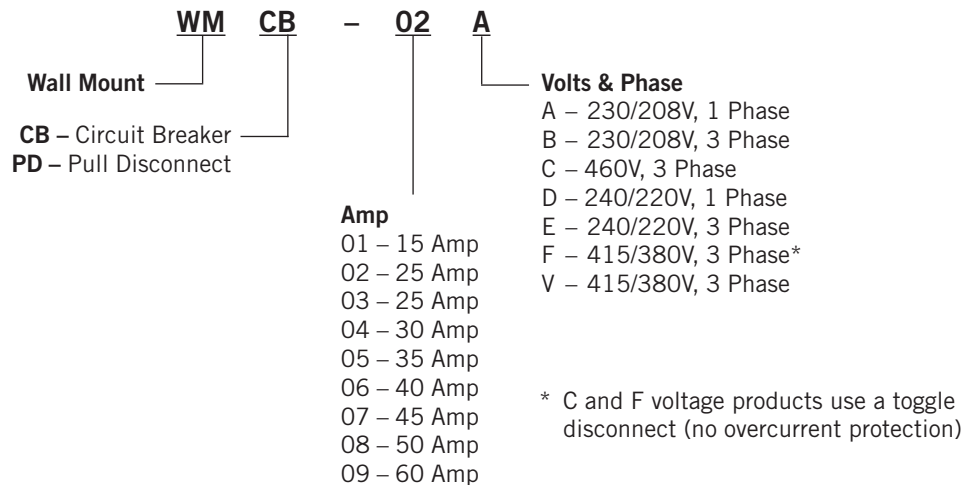
CONTENTS

General Information 3
 Description 3
Installation 8
 Installation..... 8

Figures
 Figure 1A 1-1/2 – 3 Ton Units..... 8
 Figure 1B 3 – 6 Ton Units..... 9
 Figure 2 Serial Plate Remarking Label 10

Tables
 Table 1A Applicable Kits for Listed Models –
 Air Conditioners 3
 Table 1B Applicable Kits for Listed Models –
 Air Conditioners 4
 Table 1C Applicable Kits for Listed Models –
 Air Conditioners 5
 Table 1D Applicable Kits for Listed Models –
 Heat Pumps 6
 Table 1E Applicable Kits for Listed Models –
 Heat Pumps 7

Nomenclature



GENERAL INFORMATION

Description

WMCB kits are field-installable circuit breaker kits suitable for use with 0 kW Bard wall mount heat pumps and air conditioners (-A and -B electrical versions).

WMPD kits are field-installable pull disconnect kits suitable for use with 0 kW Bard wall mount heat pumps and air conditioners (-C electrical versions). See Table 1A (below) and Tables 1B thru 1E on pages 4 – 7 for applicable kits for listed models.

TABLE 1A
Applicable Kits for Listed Models – Air Conditioners

	WMCB-01B	WMCB-02A	WMCB-02B	WMCB-03A	WMCB-03B	WMCB-04A	WMCB-04B	WMCB-05A	WMCB-06A	WMPD-01C
W18AB-A0Z		X								
W18ABPA0Z		X								
W18AF-A0Z		X								
W18AY-A0Z		X								
W18AYPA0Z		X								
W24AB-A0Z				X						
W24AB-B0Z			X							
W24AB-C0Z										X
W24AB-D0Z		X								
W24AB-F0Z										X
W24ABPA0Z				X						
W24ABPB0Z	X									
W24ABPC0Z										X
W24ABPD0Z		X								
W24ABPF0Z										X
W24AF-A0Z				X						
W24AF-B0Z			X							
W24AF-C0Z										X
W24AF-D0Z				X						
W24AF-F0Z										X
W24AY-A0Z				X						
W24AY-B0Z			X							
W24AY-C0Z										X
W24AY-D0Z		X								
W24AY-F0Z										X
W24AYPA0Z				X						
W24AYPB0Z			X							
W24AYPC0Z										X
W24AYPD0Z		X								
W24AYPF0Z										X

TABLE 1B
Applicable Kits for Listed Models – Air Conditioners

	WMCB-01B	WMCB-02A	WMCB-02B	WMCB-03A	WMCB-03B	WMCB-04A	WMCB-04B	WMCB-05A	WMCB-06A	WMPD-01C
W30AB-A0Z								X		
W30AB-B0Z			X							
W30AB-C0Z										X
W30AB-D0Z				X						
W30ABDA0Z								X		
W30ABDB0Z			X							
W30ABDC0Z										X
W30AB-F0Z										X
W30ABPA0Z								X		
W30ABPB0Z			X							
W30ABPC0Z										X
W30ABPD0Z						X				
W30ABPF0Z										X
W30AF-A0Z				X						
W30AF-B0Z			X							
W30AF-C0Z										X
W30AF-D0Z						X				
W30AF-F0Z										X
W30AFDA0Z				X						
W30AFDB0Z			X							
W30AFDC0Z										X
W30AY-A0Z						X				
W30AY-B0Z			X							
W30AY-C0Z										X
W30AY-D0Z				X						
W30AYDA0Z						X				
W30AYDB0Z			X							
W30AYDC0Z										X
W30AY-F0Z										X
W30AYPA0Z						X				
W30AYPB0Z			X							
W30AYPC0Z										X
W30AYPD0Z				X						
W30AYPF0Z										X

TABLE 1C
Applicable Kits for Listed Models – Air Conditioners

	WMCB-01B	WMCB-02A	WMCB-02B	WMCB-03A	WMCB-03B	WMCB-04A	WMCB-04B	WMCB-05A	WMCB-06A	WMPD-01C
W36AB-A0Z								X		
W36AB-B0Z					X					
W36AB-C0Z										X
W36AB-D0Z				X						
W36ABDA0Z								X		
W36ABDB0Z					X					
W36ABDC0Z										X
W36ABDV0Z										X
W36AB-E0Z							X			
W36AB-F0Z										X
W36ABPA0Z								X		
W36ABPB0Z					X					
W36ABPC0Z										X
W36ABPD0Z				X						
W36ABPE0Z							X			
W36ABPF0Z										X
W36ABRC0Z										X
W36AF-A0Z								X		
W36AF-B0Z					X					
W36AF-C0Z										X
W36AF-E0Z							X			
W36AF-F0Z										X
W36AFDA0Z								X		
W36AFDB0Z					X					
W36AFDC0Z										X
W36AFDV0Z										X
W36AFRC0Z										X
W36AY-A0Z								X		
W36AY-B0Z					X					
W36AY-C0Z										X
W36AY-D0Z						X				
W36AYDA0Z								X		
W36AYDB0Z					X					
W36AYDC0Z										X
W36AYDV0Z										X
W36AY-E0Z					X					
W36AY-F0Z										X
W36AYPA0Z								X		
W36AYPB0Z					X					
W36AYPC0Z										X
W36AYPD0Z						X				
W36AYPE0Z					X					
W36AYPF0Z										X
W36AYRC0Z										X

TABLE 1D
Applicable Kits for Listed Models – Heat Pumps

	WMCB-01B	WMCB-02A	WMCB-02B	WMCB-03A	WMCB-03B	WMCB-04A	WMCB-04B	WMCB-05A	WMCB-06A	WMPD-01C
W18HB-A0Z		X								
W18HF-A0Z		X								
W18HY-A0Z		X								
W24HB-A0Z				X						
W24HB-B0Z			X							
W24HB-C0Z										X
W24HBDA0Z				X						
W24HDB0Z			X							
W24HBDC0Z										X
W24HF-A0Z				X						
W24HF-B0Z			X							
W24HF-C0Z										X
W24HFDA0Z				X						
W24HFDB0Z			X							
W24HFDC0Z										X
W24HY-A0Z				X						
W24HY-B0Z			X							
W24HY-C0Z										X
W24HYDA0Z				X						
W24HYDB0Z			X							
W24HYDC0Z										X
W30HB-A0Z								X		
W30HB-B0Z					X					
W30HB-C0Z										X
W30HBDA0Z								X		
W30HDB0Z					X					
W30HBDC0Z										X
W30HF-A0Z				X						
W30HF-B0Z			X							
W30HF-C0Z										X
W30HFDA0Z				X						
W30HFDB0Z					X					
W30HFDC0Z										X
W30HY-A0Z						X				
W30HY-B0Z			X							
W30HY-C0Z										X
W30HYDA0Z						X				
W30HYDB0Z			X							
W30HYDC0Z										X

TABLE 1E
Applicable Kits for Listed Models – Heat Pumps

	WMCB-01B	WMCB-02A	WMCB-02B	WMCB-03A	WMCB-03B	WMCB-04A	WMCB-04B	WMCB-05A	WMCB-06A	WMPD-01C
W36HB-A0Z									X	
W36HB-B0Z					X					
W36HB-C0Z										X
W36HBDA0Z									X	
W36HBDB0Z					X					
W36HBDC0Z										X
W36HF-A0Z								X		
W36HF-B0Z					X					
W36HF-C0Z										X
W36HFDA0Z								X		
W36HFDB0Z					X					
W36HFDC0Z										X
W36HY-A0Z								X		
W36HY-B0Z					X					
W36HY-C0Z										X
W36HYDA0Z								X		
W36HYDB0Z					X					
W36HYDC0Z										X

INSTALLATION

Installation

1. Disconnect all power to unit. Remove control panel inner and outer covers.
2. Before installation, check unit serial plate to make sure the circuit breaker or pull disconnect kit to be installed is listed as a kit suitable for use with the unit.
3. Mount circuit breaker or disconnect assembly in position as shown in Figures 1A and 1B with screws provided.
4. Connect red compressor supply lead to L1 of terminal block. Connect black compressor supply lead to L2 of terminal block. If 3-phase unit, connect yellow supply lead to L3 of terminal block. See Figures 1A and 1B and wiring diagram (included with kit).
5. Connect field wiring to circuit breakers.
6. Attach adhesive wiring diagram directly above unit wiring diagram on inner control panel cover.
7. Recheck wiring. Break out appropriate circuit breaker tabs on inner control panel cover to allow trip lever to protrude. On pull disconnect kit, remove blank-off plate on inner control panel cover.
8. Resupply power to the unit and check for proper operation.
9. Remark serial plate with self-adhesive label attached to the front of this manual (see Figure 2 on page 10).

FIGURE 1A
1-1/2 – 3 Ton Wall Mounts

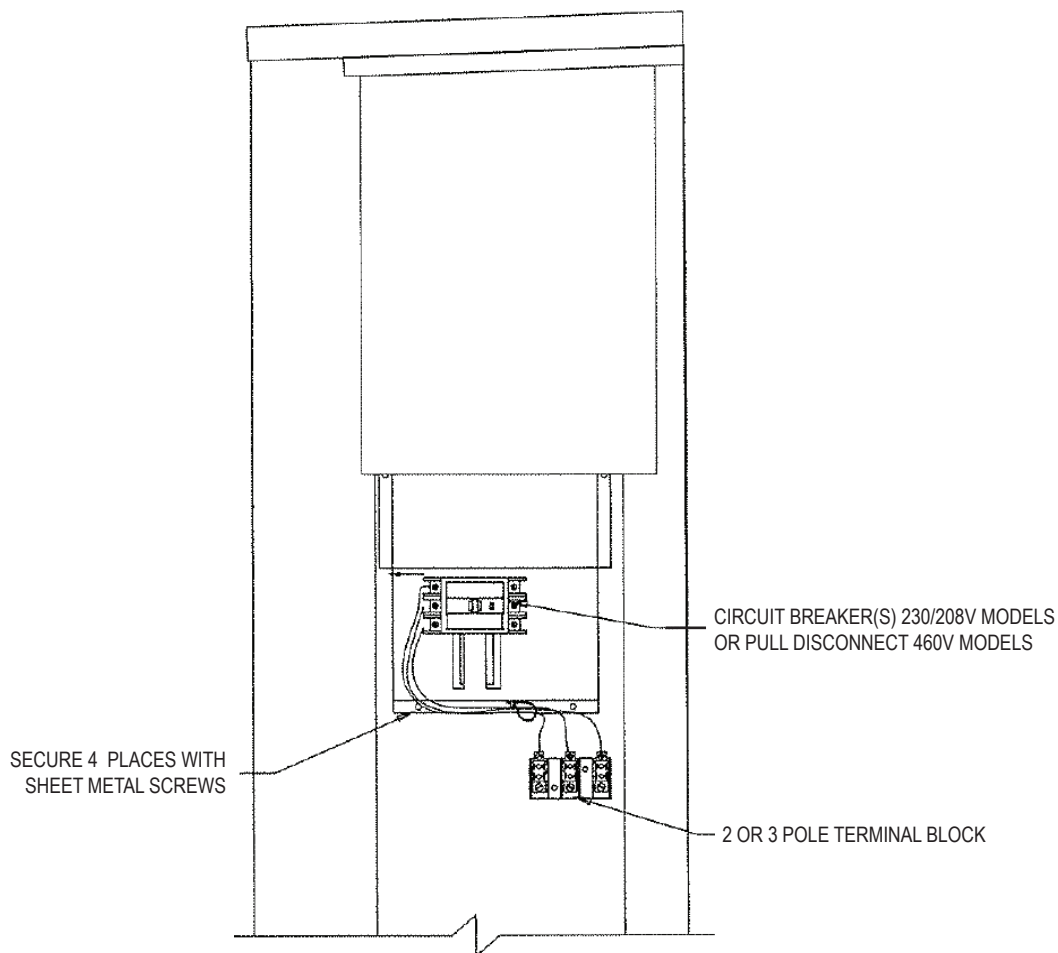


FIGURE 1B
3-1/2 – 6 Ton Wall Mounts

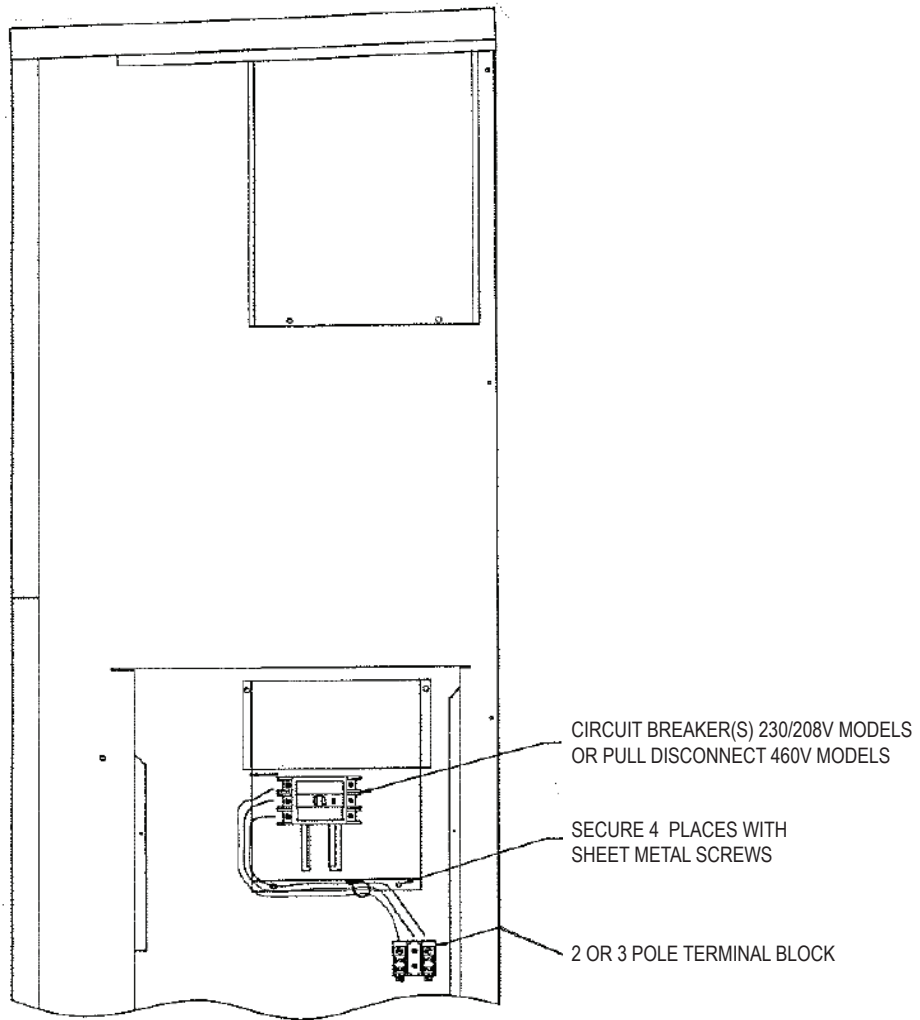
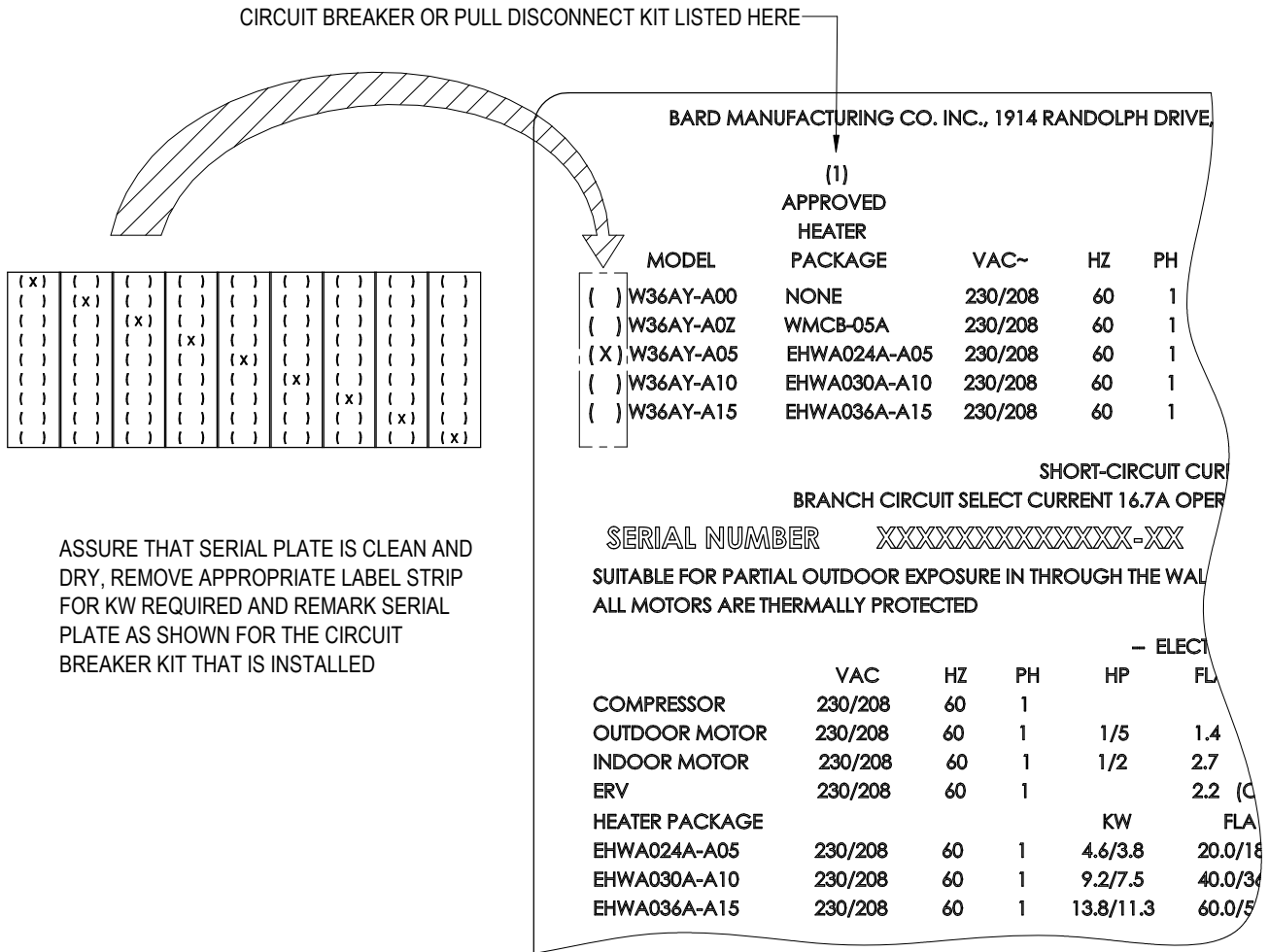


FIGURE 2
Serial Plate Marking Label



MIS-405 A