



Heating & Cooling Products

INSTALLATION INSTRUCTIONS

WALL MOUNTED PACKAGE AIR CONDITIONERS

**MODEL:
WA121**

BARD MANUFACTURING COMPANY
Bryan, Ohio 43506

Since 1914...Moving ahead, just as planned.

| | |
|-------------|--------------------|
| Manual: | 2100-234 Rev. D |
| Supersedes: | Rev. C |
| File: | Volume III, Tab 16 |
| Date: | 9-06-96 |

SECTION 1 --GETTING OTHER INFORMATION AND PUBLICATIONS

These publications can help you install the air conditioner or heat pump. You can usually find these at your local library or purchase them directly from the publisher. Be sure to consult current edition of each standard.

| | |
|---|----------------|
| National Electrical Code | -ANSI/NFPA 70 |
| Standard For The Installation Of Air Conditioning and Ventilating Systems | -ANSI/NFPA 90A |
| Standard For Warm Air Heating and Air Conditioning Systems | -ANSI/NFPA 90B |
| Load Calculation For Residential Winter and Summer Air Conditioning | -ACCA Manual J |
| Duct Design For Residential Winter and Summer Air Conditioning and Equipment Selection | -ACCA Manual D |

FOR MORE INFORMATION, CONTACT THESE PUBLISHERS

ACCA: AIR CONDITIONING CONTRACTORS OF AMERICA
1712 New Hampshire Avenue, NW
Washington, DC 20009
Telephone: (202) 483-9370 Fax: (202) 234-4721

ANSI: AMERICAN NATIONAL STANDARDS INSTITUTE
11 West Street, 13th Floor
New York, NY 10036
Telephone: (212) 642-4900 Fax: (212) 302-1286

ASHRAE: AMERICAN SOCIETY OF HEATING REFRIGERATING AND
AIR CONDITIONING ENGINEERS, INCORPORATED
1791 Tullie Circle, N.E.
Atlanta, GA 30329-2305
Telephone: (404) 636-8400 Fax: (404) 321-5478

NFPA: NATIONAL FIRE PROTECTION ASSOCIATION
Batterymarch Park
P. O. Box 9101
Quincy, MA 02269-9901
Telephone: (800) 344-3555 Fax: (617) 984-7057

Manufactured under U.S. patent number 5,301,744.
Other patents pending.

COPYRIGHT SEPTEMBER 1996
BARD MANUFACTURING COMPANY
BRYAN, OH 43506 USA

TABLE OF CONTENTS

PART 1 -- WALL MOUNT--GENERAL INSTALLATION INFORMATION

| | |
|---|---|
| Air Conditioner Wall Mount Model Nomenclature | 1 |
| Shipping Damage | 1 |
| General | 4 |
| Duct Work | 4 |
| Filters | 4 |
| Fresh Air Intake | 5 |
| Condensate Drain | 5 |

PART 2 -- INSTALLATION

| | |
|--------------------------------------|----|
| Wall Mounting Information | 6 |
| Mounting The Unit | 6 |
| WIRING | |
| Wiring--Main Power | 10 |
| Wiring: Low Voltage Wiring | 10 |

PART 3 -- START-UP

| | |
|------------------------------------|----|
| Important Installer Note | 12 |
| Service Hints | 12 |
| Sequence of Operation | 12 |
| Pressure Service Ports | 12 |

PART 4 -- TROUBLESHOOTING

| | |
|--|----|
| Fan Blade Setting Dimensions | 12 |
| Refrigerant Charge | 13 |
| Pressure Tables | 14 |
| Optional Accessories | 14 |

FIGURES AND TABLES

| | | |
|----------|--|----|
| Figure 1 | Unit Dimensions | 2 |
| Figure 2 | Fresh Air Damper Assembly | 5 |
| Figure 3 | Mounting Locations | 7 |
| Figure 4 | Wall-Mounting Instructions | 8 |
| Figure 5 | Wall-Mounting Instructions | 8 |
| Figure 6 | Common Wall-Mounting Installations | 9 |
| Figure 7 | Unit 24V Terminal Board | 11 |
| Figure 8 | Fan Blade Setting | 12 |

| | | |
|----------|--|----|
| Table 1 | Electric Heat Table | 1 |
| Table 2 | Electrical Specifications | 3 |
| Table 3 | Thermostat Wire Sizes | 10 |
| Table 3A | Wall Thermostat and Subbase Combinations | 10 |
| Table 4 | Fan Blade Setting | 12 |
| Table 5 | Refrigerant Charge | 13 |
| Table 6 | Indoor Blower Performance | 13 |
| Table 7 | Recommended Operating Ranges | 13 |
| Table 8 | Maximum ESP of Operation | 13 |
| Table 9 | Cooling--Pressure (PSI) | 14 |
| Table 10 | Optional Accessories | 14 |

PART 1 -- WALL MOUNT GENERAL INFORMATION

AIR CONDITIONER WALL MOUNT MODEL NOMENCLATURE

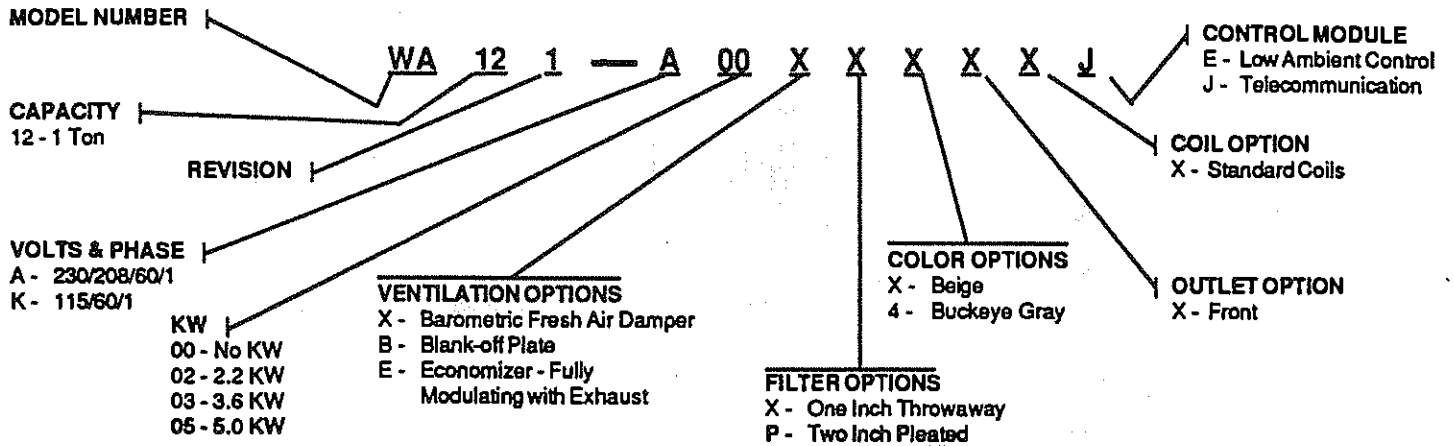


TABLE 1

| ELECTRIC HEAT TABLE | | | | | | | | | | |
|---------------------|---------|----------|------|----------|---------|----------|---------|----------|------|----------|
| Models | WA121-A | | | | WA121-K | | WA121-G | | | |
| | 240V | | 208V | | 120V | | 240V | | 220V | |
| | KW | BTU ⊙ | A | BTU ⊙ | A | BTU ⊙ | A | BTU ⊙ | A | BTU ⊙ |
| 02 | | | | | 18.3 | 7985 | 10.0 | 8665 | 9.1 | 7300 |
| 03 | 15.0 | 12760 | 13.0 | 9705 | | | 15.0 | 12760 | 13.8 | 10800 |
| 05 | 20.8 | 17540 | 18.1 | 13275 | | | | | | |

⊙ With blower watts included

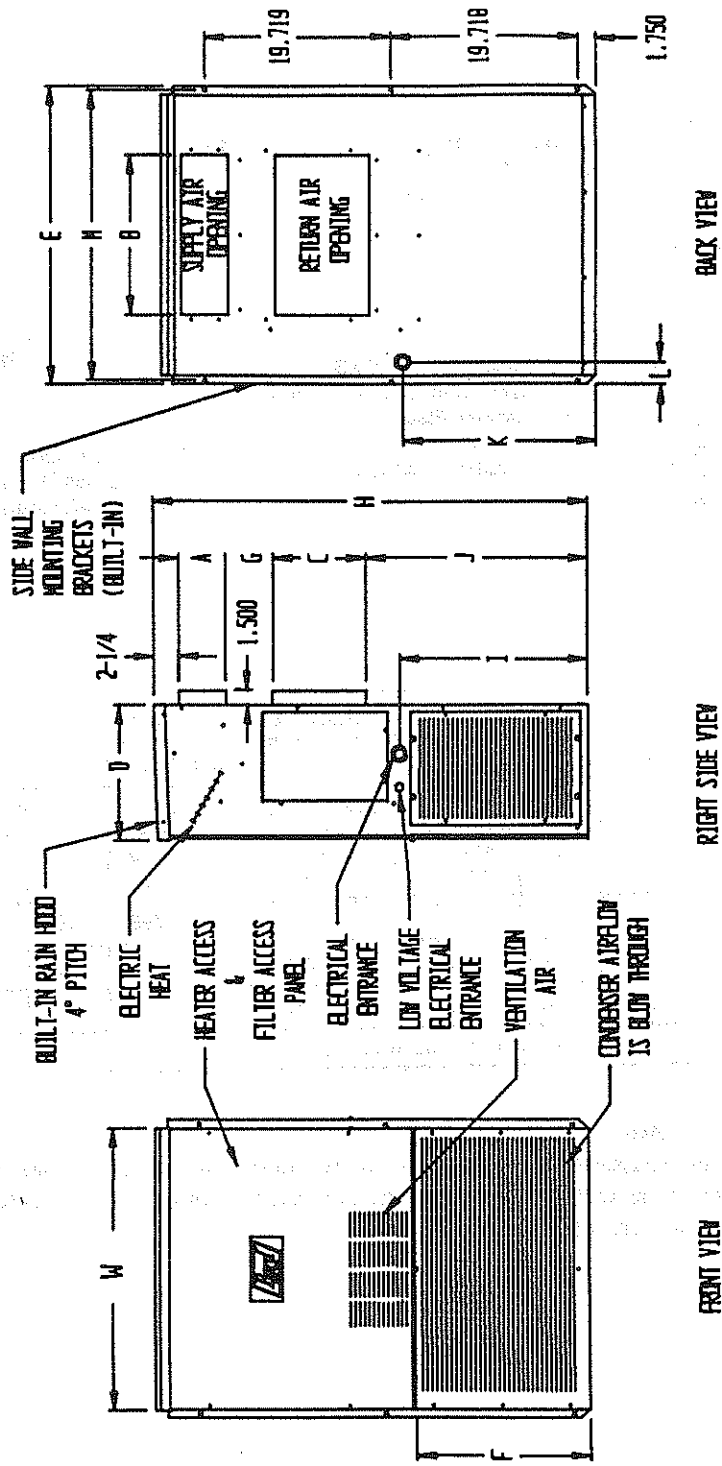
SHIPPING DAMAGE

Upon receipt of equipment, the carton should be checked for external signs of shipping damage. If damage is found, the receiving party must contact the last carrier immediately, preferably in writing, requesting inspection by the carrier's agent.

FIGURE 1
UNIT DIMENSIONS

SIZE SPECS FOR HIS-500

| UNIT | WIDTH (W) | DEPTH (D) | HEIGHT (H) | SUPPLY | | | RETURN | | | E | F | G (*) | I | J (*) | K | L | M |
|-------|-----------|-----------|------------|--------|----|----|--------|----|--------|--------|--------|------------------|--------|-------|---------|---|---|
| | | | | A | B | C | B | C | B | | | | | | | | |
| WA121 | 30-1/8 | 14-5/8 | 45 | 5 | 17 | 10 | 17 | 32 | 18-1/4 | 2 DR 5 | 19-7/8 | 23-3/4 OR 26-3/4 | 20-1/4 | 2-1/2 | 31-1/16 | | |



(*) POSITION OF RETURN AIR FLANGES ARE INTERCHANGEABLE BETWEEN TWO POSITIONS. FACTORY BUILT AT 5 INCHES.

TABLE 2

| SINGLE CIRCUIT | | | | | | |
|-------------------------|-----------------------|--------------------------|-------------------------------|---|----------------------------|-----------------------|
| Model | Rated Volts and Phase | No. Field Power Circuits | Minimum Circuit Ampacity ③ | Maximum External Fuse or Circuit Breaker ① | Field Power Wire Size ② | Ground Wire Size ② |
| WA121-A00 A03 A05 | 230/208-1 | 1 1 1 | 8 20 27 | 15 20 30 | 14 12 10 | 14 12 10 |
| WA121-K00 K02 | 115-1 | 1 1 | 17 25 | 25 30 | 10 10 | 10 10 |
| WA121-G00 G02 G03 | 220-50-1 | 1 1 1 | 7 13 20 | 15 15 20 | 14 14 12 | 14 14 12 |

① Maximum size of the time delay fuse or HACR type circuit breaker for protection of field wiring conductors.
 ② Based on 75°C copper wire. All wiring must conform to NEC and all local codes.
 ③ These "Minimum Circuit Ampacity" values are to be used for sizing the field power conductors. Refer to the National Electrical Code (latest revision), article 310 for power conductor sizing.
CAUTION: When more than one field power conductor circuit is run thru one conduit, the conductors must be derated. Pay special attention to note 8 of table 310 regarding Ampacity Adjustment Factors when more than 3 conductors are in a raceway.

GENERAL

The equipment covered in this manual is to be installed by trained, experienced service and installation technicians.

The refrigerant system is completely assembled and charged. All internal wiring is complete.

The unit is designed for use with or without duct work. Flanges are provided for attaching the supply and return ducts.

These instructions explain the recommended method to install the air cooled self-contained unit and the electrical wiring connections to the unit.

These instructions and any instructions packaged with any separate equipment required to make up the entire air conditioning system should be carefully read before beginning the installation. Note particularly "Starting Procedure" and any tags and/or labels attached to the equipment.

While these instructions are intended as a general recommended guide, they do not supersede any national and/or local codes in any way. Authorities having jurisdiction should be consulted before the installation is made. See Page 1 for information on codes and standards.

Size of unit for a proposed installation should be based on heat loss calculation made according to methods of Air Conditioning Contractors of America (ACCA). The air duct should be installed in accordance with the Standards of the National Fire Protection Association for the Installation of Air Conditioning and Ventilating systems of Other Than Residence Type, NFPA No. 90A, and Residence Type Warm Air Heating and Air Conditioning Systems, NFPA No. 90B. Where local regulations are at a variance with instructions, installer should adhere to local codes.

DUCT WORK

All duct work, supply and return, must be properly sized for the design air flow requirement of the equipment. Air Conditioning Contractors of America (ACCA) is an excellent guide to proper sizing. All duct work or portions thereof not in the conditioned space should be properly insulated in order to both conserve energy and prevent condensation or moisture damage.

Refer to Table 8 for maximum static pressure available for duct design.

Design the duct work according to methods given by the Air Conditioning Contractors of America (ACCA). When duct runs through unheated spaces, it should be insulated with a minimum of one inch of insulation. Use insulation with a vapor barrier on the outside of the insulation. Flexible joints should be used to connect the duct work to the equipment in order to keep the noise transmission to a minimum.

Ducts through the walls must be insulated and all joints taped or sealed to prevent air or moisture entering the wall cavity.

Some installations may not require any return air duct. It is recommended that on this type of installation that a filter grille be located in the wall. Filters must be of sufficient size to allow a maximum velocity of 400 FPM.

NOTE: If no return air duct is used, applicable installation codes may limit this cabinet to installation only in a single story structure.

FILTERS

A 1-inch throwaway filter is supplied with each unit. The filter slides into position making it easy to service. This filter can be serviced from the outside by removing the service door. A 2-inch pleated filter is also available as an optional accessory. The internal filter brackets are adjustable to accommodate the 2-inch filter by loosening 2 screws in each bracket assembly and sliding the brackets apart to the required width and retightening the 4 screws.

FRESH AIR INTAKE

All units are built with a fresh air inlet slots punched in the service panel.

If the unit is equipped with a fresh air damper assembly, the assembly is shipped already attached to the unit. The damper blade is locked in the closed position. To allow the damper to operate, the maximum and minimum blade position stops must be installed. See Figure 2.

All capacity, efficiency and cost of operation information as required for Department of Energy "Energyguide" Fact Sheets is based upon the fresh air blank-off plate in place and is recommended for maximum energy efficiency.

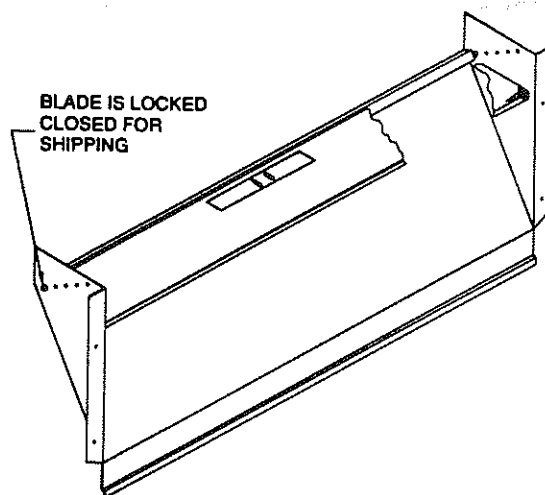
The blank-off plate is available upon request from the factory and is installed in place of the fresh air damper shipped with each unit.

CONDENSATE DRAIN

This unit employs an automatic condensate disposal system consisting of a base drain pan, drain valve and fan blade with slinger ring. A plastic drain hose extends from the evaporator drain pan at the top of the unit to the base drain pan at the bottom. At temperatures above 40°, the drain valve located between the condenser coil and fan shroud is closed allowing water to build up in the base to a height of 5/8" to 3/4". The fan blade with slinger then rotates in this water and throws the water onto the condenser coil. This disposes of the water by evaporating it on the hot condenser.

At temperatures below 40°, the drain valve opens draining the base pan and preventing freeze ups that could damage the coil or fan blade.

Figure 2



PART 2 -- INSTALLATION INSTRUCTIONS

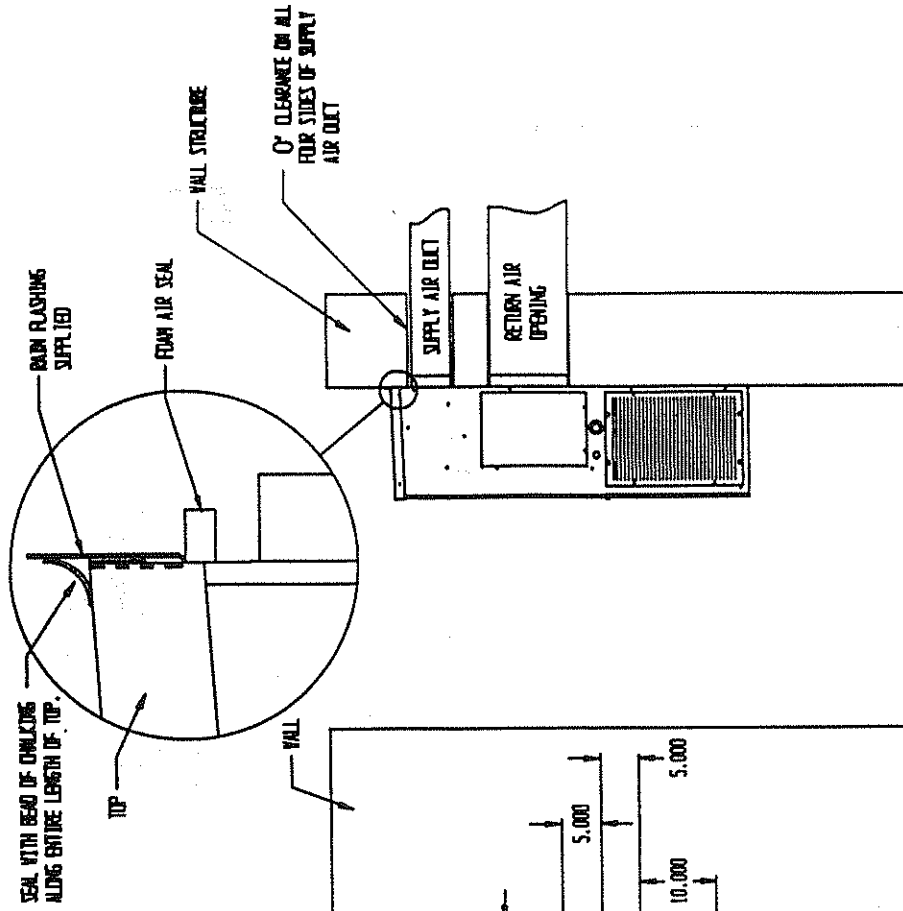
WALL MOUNTING INFORMATION

1. These units are secured by wall mounting brackets which secure the unit to the outside wall surface at both sides.
2. On wood-frame walls, the wall construction must be strong and rigid enough to carry the weight of the unit without transmitting any unit vibration.
3. Concrete block walls must be thoroughly inspected to insure that they are capable of carrying the weight of the installing unit.

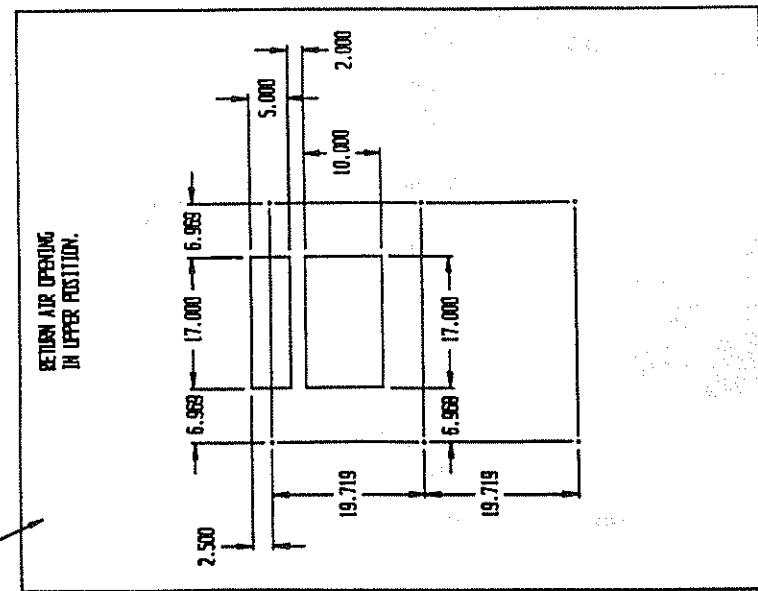
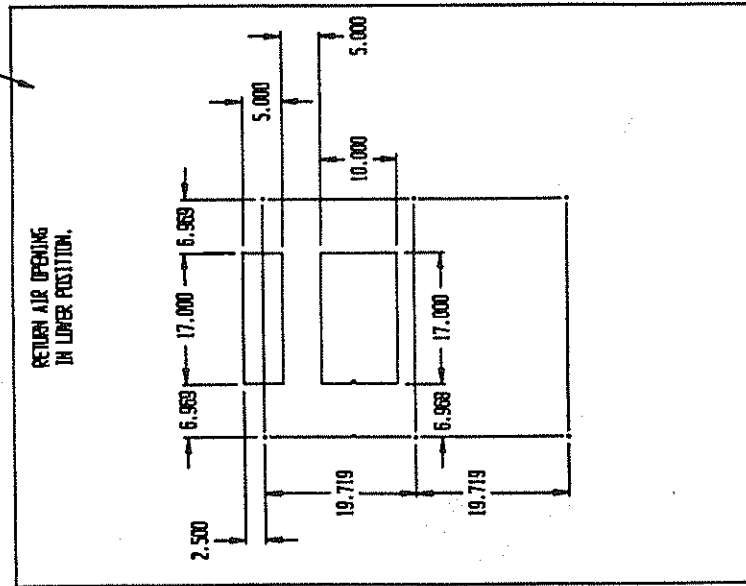
MOUNTING THE UNIT

1. Two holes, for the supply and return air openings, must be cut through the wall as shown in Figure 3.
2. Locate and mark lag bolt locations and bottom mounting bracket location, if desired. See Figure 3.
3. Hook top rain flashing under back bend of top. Top rain flashing is shipped attached to the back of the unit on the right side.
4. Position unit in opening and secure with 5/16 lag bolts; use 7/8 inch diameter flat washers on the lag bolts.
5. Secure rain flashing to wall and caulk across entire length of top. See Figure 3.
6. For additional mounting rigidity, the return air and supply air frames or collars can be drilled and screwed or welded to the structural wall itself (depending upon wall construction). Be sure to observe required clearance if combustible wall.
7. On side by side installations, maintain a minimum of 20 inches clearance on right side to allow access to control panel and allow proper airflow to outdoor coil. Additional clearance may be required to meet local or national codes.

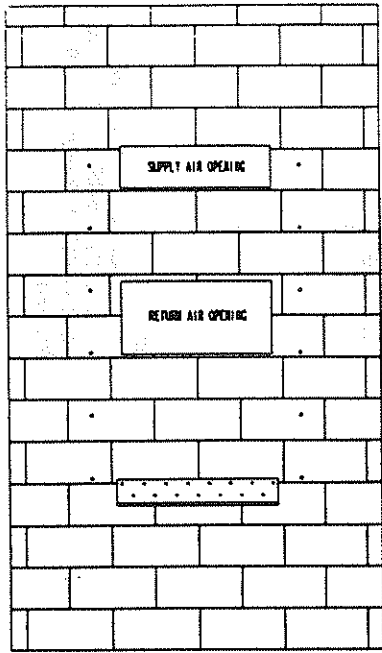
FIGURE 3
MOUNTING INSTRUCTIONS



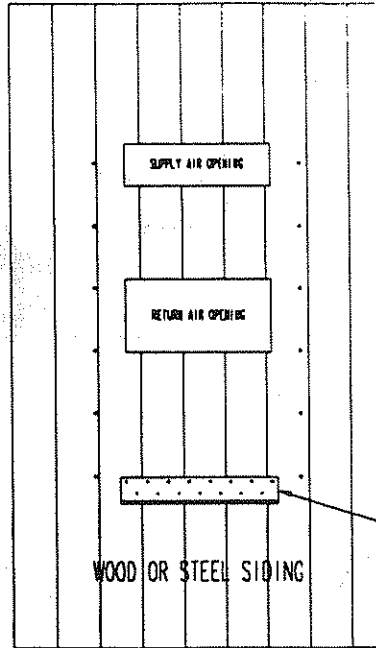
NOTE:
IT IS RECOMMENDED THAT A BEAD OF SILICONE
CAULKING BE PLACED BEHIND THE SIDE MOUNTING
FLANGES AND UNDER TOP FLASHING AT TIME OF
INSTALLATION.



SEE FIGURE 3 - MOUNTING INSTRUCTIONS



CONCRETE BLOCK WALL INSTALLATION



WOOD FRAME WALL INSTALLATION

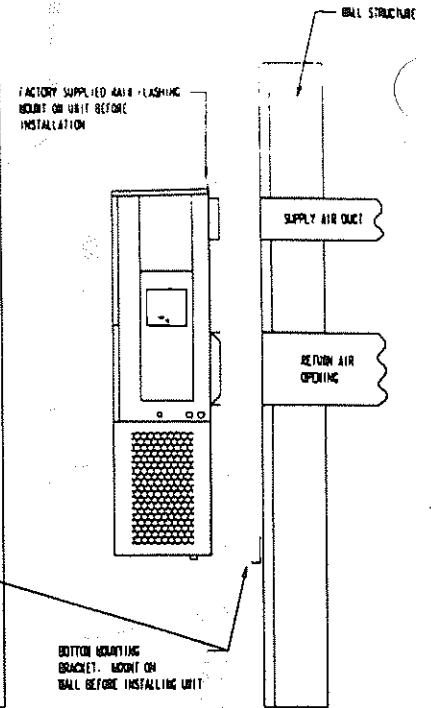


Figure 4 - Wall-Mounting Instructions

SEE UNIT DIMENSIONS, FIGURE 1, FOR ACTUAL DIMENSIONS

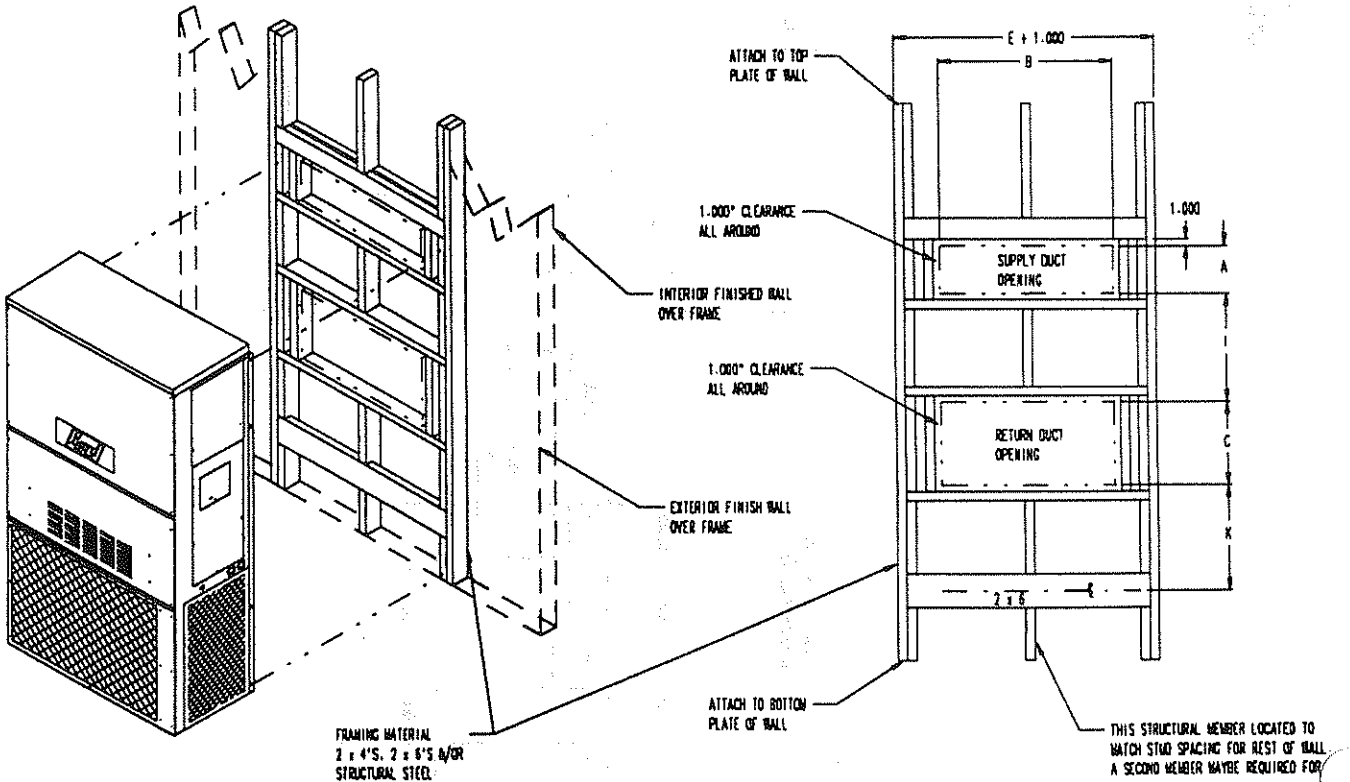
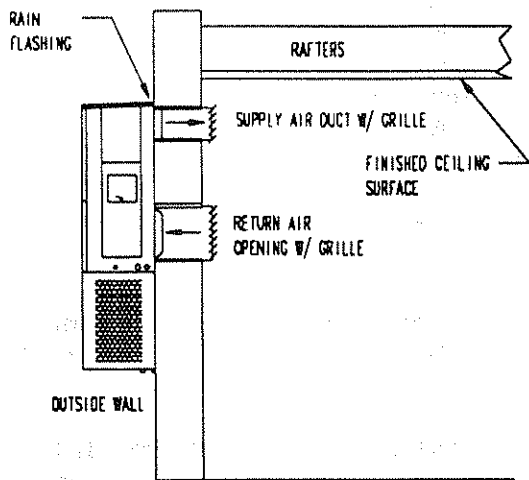
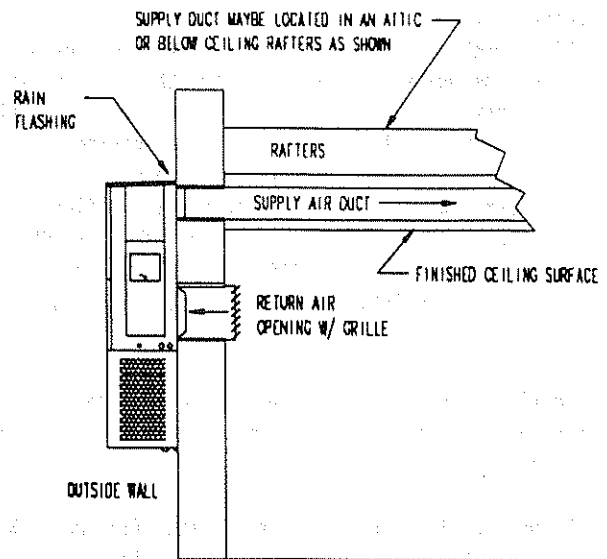


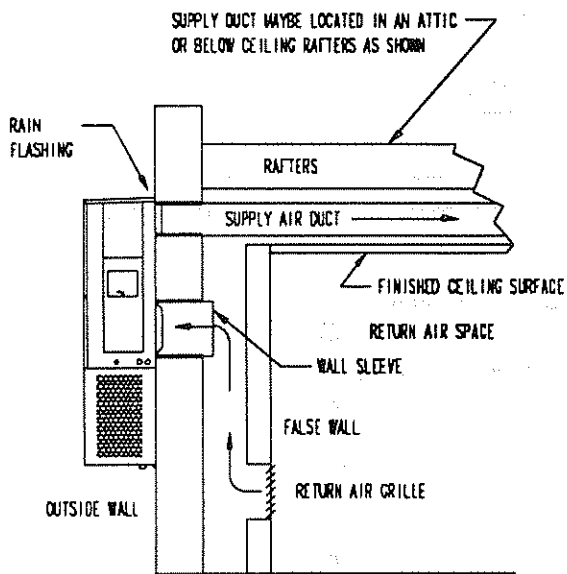
Figure 5 - Wall-Mounting Instructions



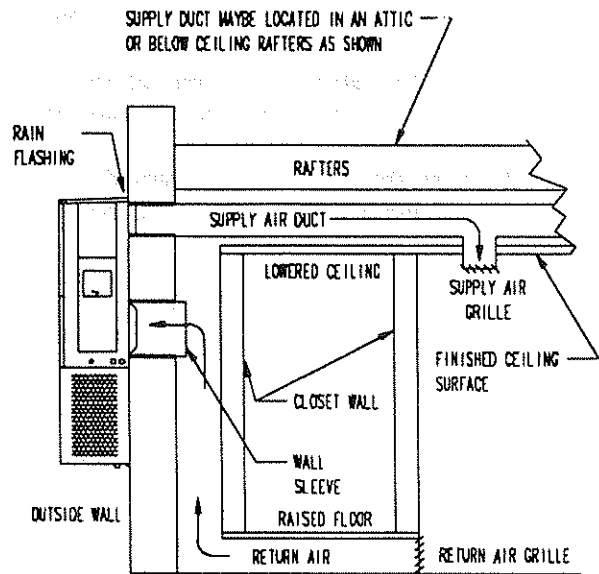
FREE AIR FLOW
NO DUCT



DUCTED SUPPLY
RETURN AT UNIT



FALSE WALL INSTALLATION



CLOSET INSTALLATION

Figure 6 — Common Wall-Mounting Installations

WIRING--MAIN POWER

Refer to the unit rating plate for wire sizing information and maximum fuse or "BACR Type" circuit breaker size. Each outdoor unit is marked with a "Minimum Circuit Ampacity". This means that the field wiring used must be sized to carry that amount of current. Depending on the installed KW of electric heat, there may be two field power circuits required. If this is the case, the unit serial plate will so indicate. All models are suitable only for connection with copper wire. Each unit and/or wiring diagram will be marked "Use Copper Conductors Only". These instructions MUST BE adhered to. Refer to the National Electrical Code (NEC) for complete current carrying capacity data on the various insulation grades of wiring material. All wiring must conform to NEC and all local codes.

The electrical data lists fuse and wire sizes (75°C copper) for all models, including the most commonly used heater sizes. Also shown are the number of field power circuits required for the various models with heaters.

The unit rating plate lists a "Maximum Time Delay Relay Fuse" or "BACR Type" circuit breaker that is to be used with the equipment. The correct size must be used for proper circuit protection and also to assure that there will be no nuisance tripping due to the momentary high starting current of the compressor motor.

WIRING: LOW VOLTAGE WIRING

230/208V, 1 phase equipment use dual primary voltage transformers. All equipment leaves the factory wired on 240V tap. For 208V operation, reconnect from 240V to 208V tap. The acceptable operating voltage range for the 240 and 208V taps are:

| TAP | RANGE |
|-----|-----------|
| 240 | 253 - 216 |
| 208 | 220 - 187 |

NOTE: The voltage should be measured at the field power connection point in the unit and while the unit is operating at full load (maximum amperage operating condition).

Five (5) wires should be run from thermostat subbase to the 24V terminal board in the unit. A five conductor, 18 gauge copper, color-coded thermostat cable is recommended. The connection points are shown in Figure 7.

TABLE 3 THERMOSTAT WIRE SIZE

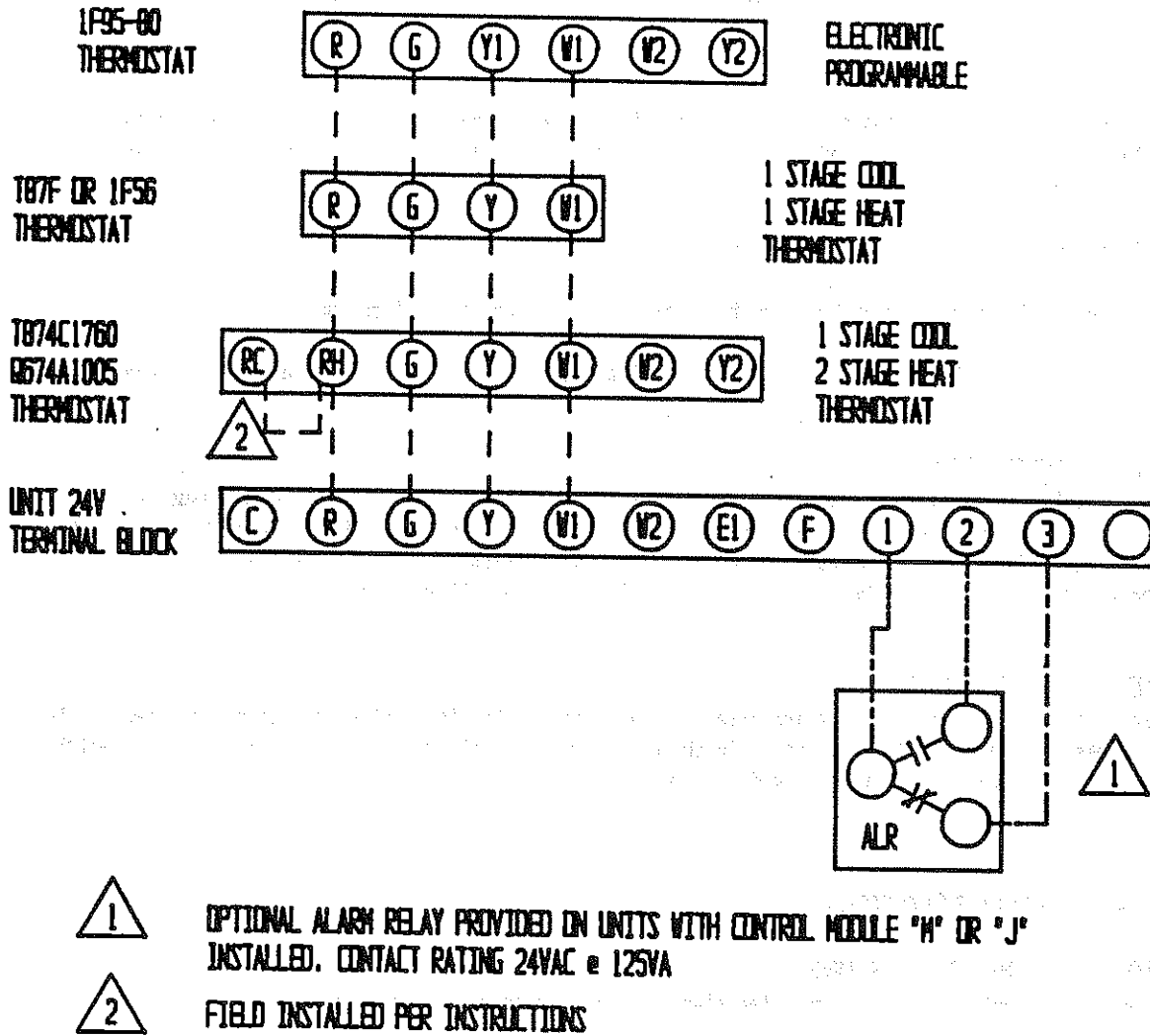
| Transformer VA | FLA | Wire Gauge | Maximum Distance In Feet |
|----------------|-----|------------|--------------------------|
| 40 | 2.3 | 20 Gauge | 45 |
| | | 18 " | 60 |
| | | 16 " | 100 |
| | | 14 " | 160 |
| | | 12 " | 250 |

TABLE 3A WALL THERMOSTAT AND SUBBASE COMBINATIONS

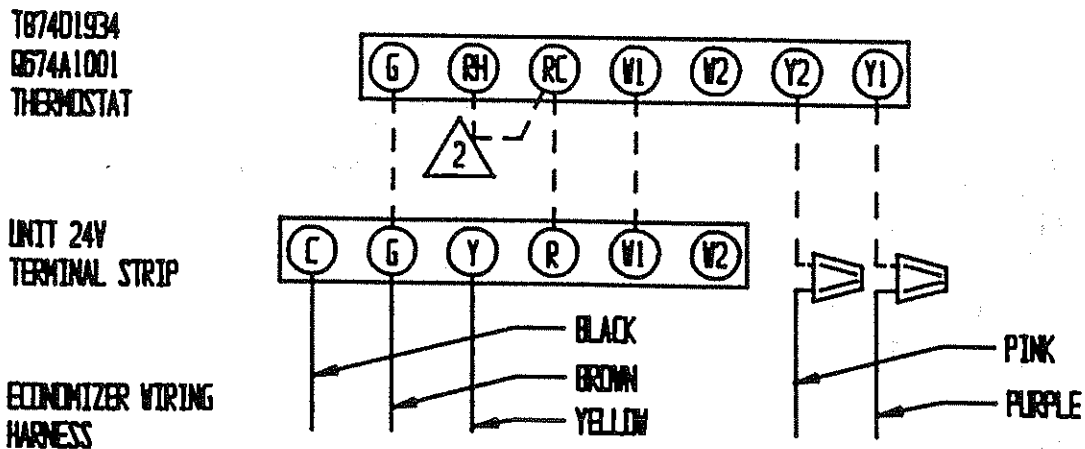
| Thermostat | Subbase | Predominate Features |
|------------|-----------|-------------------------------------|
| 8403-019 | 8404-012 | 1 stage cool, 2 stage heat |
| T874C1760 | Q674A1001 | System: heat-auto-cool Fan: on-auto |
| 8403-002 | 8404-003 | 1 stage heat, 1 stage cool |
| T87F3111 | Q539A1220 | System: heat-off-cool Fan: on-auto |
| 8403-009 | ---- | 1 stage heat, 1 stage cool |
| 1F56-318 | ---- | System: heat-off-cool Fan: on-auto |
| 5403-035 | ---- | Programmable |
| 1F95-80 | ---- | Electronic |

LOW VOLTAGE WIRING

Figure 7



OPTIONAL ECONOMIZER LOW VOLTAGE WIRING



PART 3 -- START-UP

IMPORTANT INSTALLER NOTE

For improved start-up performance, wash the indoor coil with a dishwasher detergent.

SERVICE HINTS

1. Caution owner to maintain clean air filters at all times. Also, not to needlessly close off supply and return air registers. This reduces air flow through the system, which shortens equipment service life as well as increasing operating costs.
2. The unit is equipped with a high pressure cut out switch.
3. Check all power fuses or circuit breakers to be sure they are the correct rating.
4. Periodic cleaning of the outdoor coil to permit full and unrestricted airflow circulation is essential.

SEQUENCE OF OPERATION

COOLING--Circuit R-Y makes at thermostat pulling in compressor contactor, starting the compressor and outdoor motor. The G (indoor motor) circuit is automatically completed on any call for cooling operation or can be energized by manual fan switch on subbase for constant air circulation. On a call for heating, circuit R-WI make at the thermostat pulling in heat contact for the strip heat and blower operation.

PRESSURE SERVICE PORTS

High and low pressure service ports are installed on all units so that the system operating pressures can be observed. Pressure curves can be found later in the manual covering all models. It is imperative to match the correct pressure curve to the unit by model number.

PART 4 -- TROUBLESHOOTING

FAN BLADE SETTING DIMENSIONS

Shown in the drawing below are the correct fan blade setting dimensions for proper air delivery across the outdoor coil.

Any service work requiring removal or adjustment in the fan and/or motor area will require that the dimensions below be checked and blade adjusted in or out on the motor shaft accordingly.

FIGURE 8

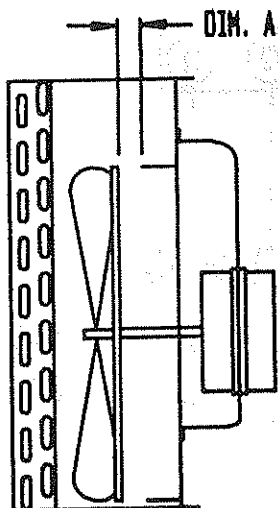


TABLE 4

| Model | Dimension A |
|-------|-------------|
| WA121 | 1/2" |

REFRIGERANT CHARGE

The correct system R-22 charge is shown on the unit rating plate. Optimum unit performance will occur with a refrigerant charge resulting in a suction line temperature (6" from compressor) as shown in the following table:

TABLE 5

| Model | Rated Airflow | 95° F OD Temperature | 82° F OD Temperature |
|-------|---------------|----------------------|----------------------|
| WA121 | 400 | 54 - 56 | 65 - 67 |

The above suction line temperatures are based upon 80° F dry/bulb/67° F wet bulb (50 percent R.H.) temperature and rated airflow across the evaporator during cooling cycle.

TABLE 6 INDOOR BLOWER PERFORMANCE--CFM @ 230V

| E.S.P. In H ₂ O | WA121 | |
|-------------------------------|-------|-----|
| | 230V | |
| | Dry / | Wet |
| .0 | 530 / | 500 |
| .1 | 485 / | 460 |
| .2 | 440 / | 425 |
| .3 | 390 / | 375 |
| .4 | 325 / | 300 |

TABLE 7

| Model | Rated CFM* | Rated ESP* | Recommended Airflow Range |
|---------------------------------------|------------|------------|---------------------------|
| WA121 | 400 | .25 | 500 - 300 |
| *Rated CFM and RSP on high speed tap. | | | |

TABLE 8

| MAXIMUM ESP OF OPERATION ELECTRIC HEAT ONLY | |
|---|-----|
| Model | ESP |
| WA121-A00 | .35 |
| A03 | .35 |
| A05 | .35 |
| WA121-K00 | .35 |
| K02 | .35 |
| WA121-G00 | .35 |
| G02 | .35 |
| G03 | .35 |
| Values shown are for units equipped with STD 1" throw-away filters. Derate ESP by .15 for 2" pleated filters. | |

COOLING

TABLE 9

Air Temperature Entering Outdoor Coil °F

| Model | Return Air Temperature | Pressure | ° | ° | ° | ° | ° | ° | ° | ° | ° |
|-------|------------------------|-----------|-----|-----|-----|-----|-----|-----|-----|-----|-----|
| | | | 75 | 80 | 85 | 90 | 95 | 100 | 105 | 110 | 115 |
| WA121 | 75 deg. DB | Low Side | 72 | 74 | 76 | 79 | 81 | 83 | 86 | 88 | 91 |
| | 62 deg. WB | High Side | 187 | 201 | 216 | 232 | 248 | 265 | 282 | 300 | 319 |
| | 80 deg. DB | Low Side | 76 | 79 | 82 | 84 | 87 | 90 | 92 | 95 | 97 |
| | 67 deg. WB | High Side | 192 | 207 | 222 | 238 | 255 | 272 | 290 | 309 | 328 |
| | 85 deg. DB | Low Side | 81 | 85 | 88 | 91 | 94 | 97 | 99 | 102 | 104 |
| | 72 deg. WB | High Side | 198 | 214 | 230 | 247 | 264 | 282 | 300 | 319 | 339 |

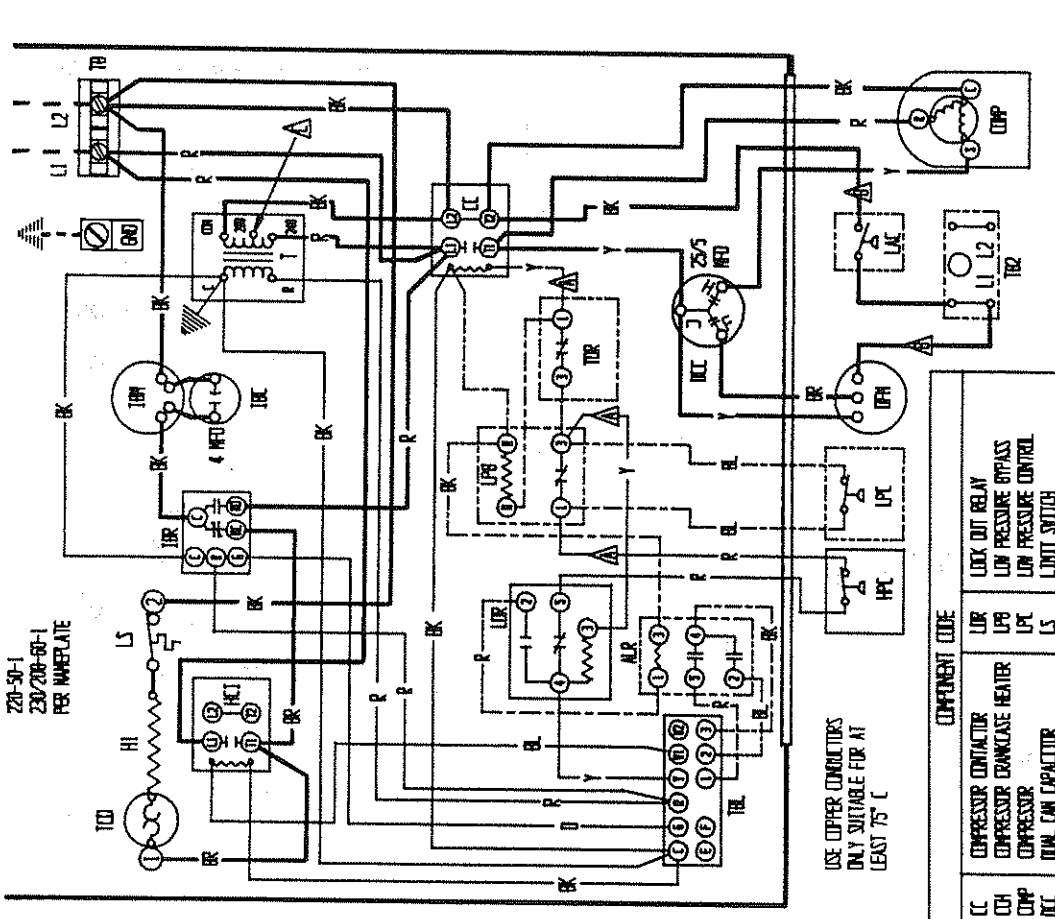
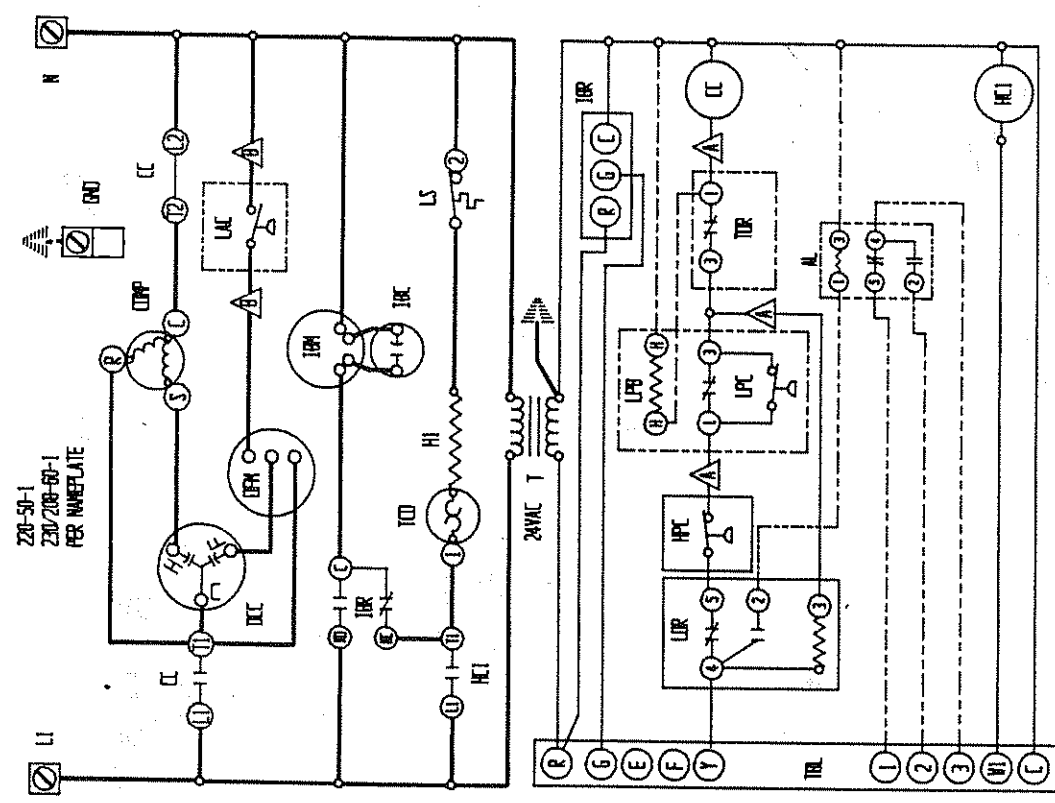
Low side pressure + 2 PSIG

High side pressure + 5 PSIG

Tables are based upon rated CFM (airflow) across the evaporator coil and should be found under section titled "Refrigerant Charge" elsewhere in manual. If there is any doubt as to correct operating charge being in the system, the charge should be removed, system evacuated, and recharged to serial plate instructions.

TABLE 10 **OPTIONAL FIELD INSTALLED ACCESSORIES**

| Model | Description | W A 1 2 1 |
|--------|-----------------------------|-----------------------|
| BOP-1A | Blank Off Plate | X |
| BEAD-1 | Barometric Fresh Air Damper | X |
| BIFM-1 | Economizer With Exhaust | X |
| CMA-6 | Low Ambient Control | X |
| CMA-20 | LPC + TDR + LAC | X |



△ LABELLED WIRES CONNECT IF NO OPTIONS USED.

| FACTORY STD. | FIELD | OPTIONAL |
|--------------|-------|----------|
| HIGH VOLTAGE | --- | --- |
| LOW VOLTAGE | --- | --- |
| ACCESSORY | --- | --- |

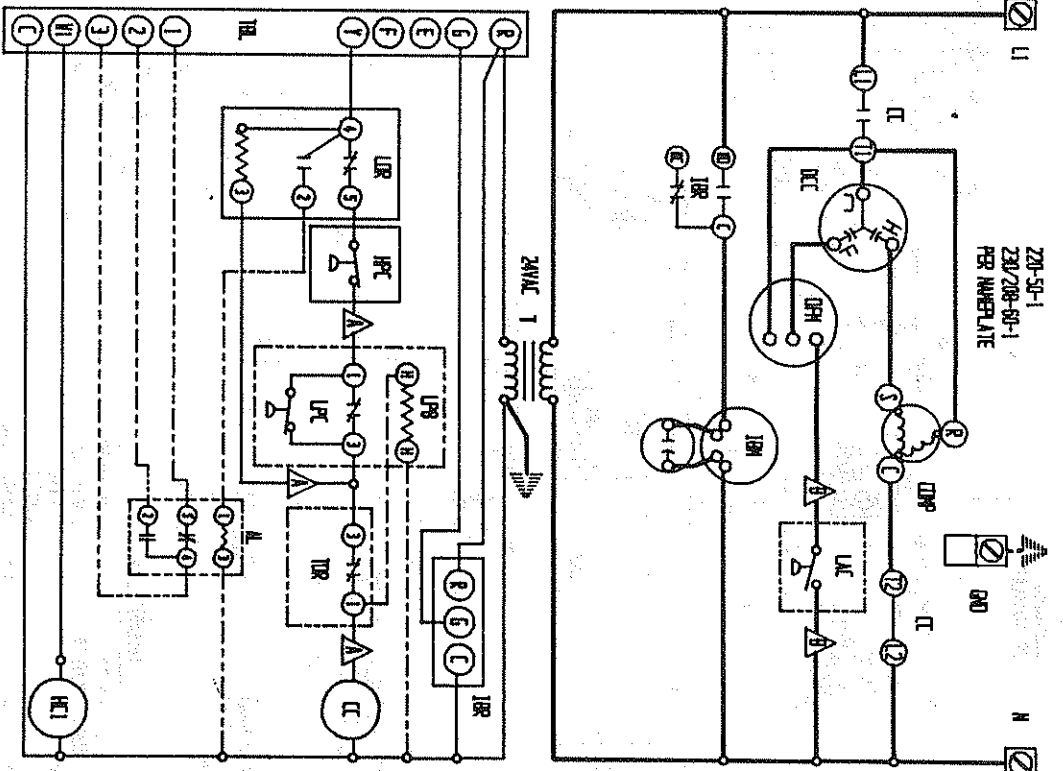
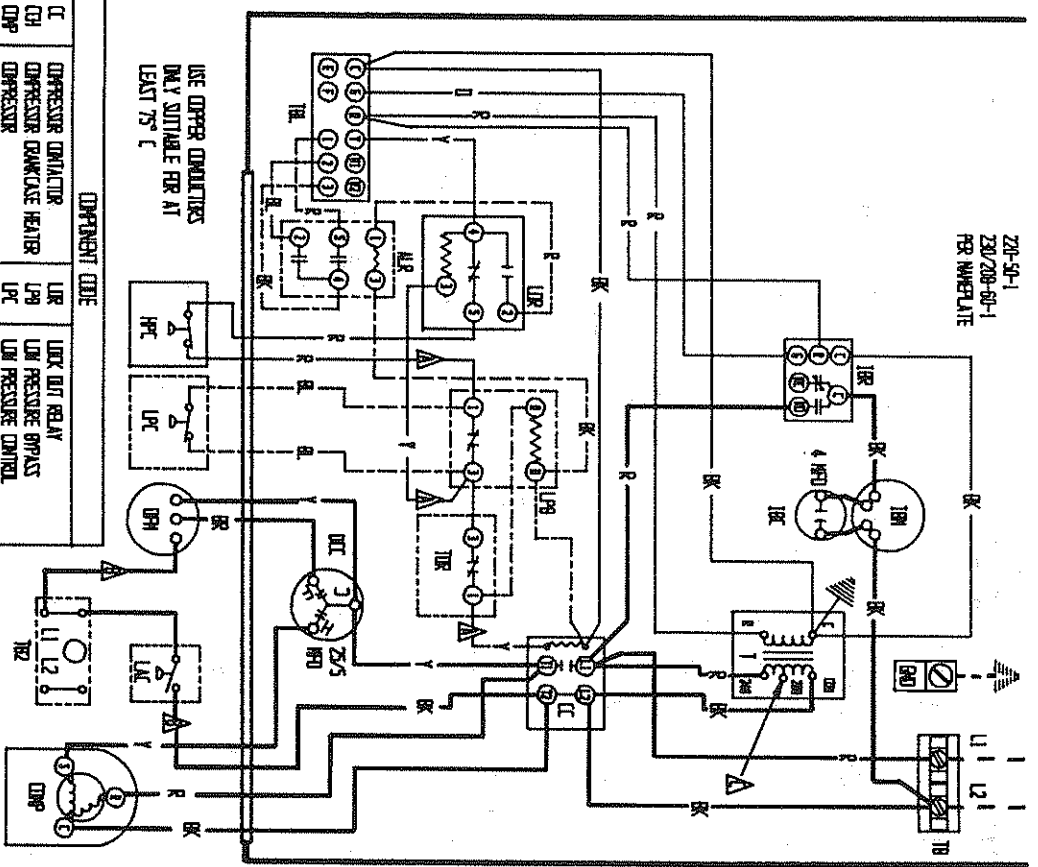
△ MOVE RED WIRE TO 200V TAP FOR 200V OPERATION

| COMPONENT CODE | COMPONENT | COLOR CODE | WIRE COLOR |
|----------------|----------------------|------------|------------|
| CC | COMPRESSOR CONTACTOR | BLACK | BLACK |
| CCP | COMPRESSOR CAPACITOR | RED | RED |
| CCG | COMPRESSOR CAPACITOR | RED | RED |
| CCU | COMPRESSOR CAPACITOR | RED | RED |
| CCV | COMPRESSOR CAPACITOR | RED | RED |
| CCW | COMPRESSOR CAPACITOR | RED | RED |
| CCX | COMPRESSOR CAPACITOR | RED | RED |
| CCY | COMPRESSOR CAPACITOR | RED | RED |
| CCZ | COMPRESSOR CAPACITOR | RED | RED |
| CC1 | COMPRESSOR CAPACITOR | RED | RED |
| CC2 | COMPRESSOR CAPACITOR | RED | RED |
| CC3 | COMPRESSOR CAPACITOR | RED | RED |
| CC4 | COMPRESSOR CAPACITOR | RED | RED |
| CC5 | COMPRESSOR CAPACITOR | RED | RED |
| CC6 | COMPRESSOR CAPACITOR | RED | RED |
| CC7 | COMPRESSOR CAPACITOR | RED | RED |
| CC8 | COMPRESSOR CAPACITOR | RED | RED |
| CC9 | COMPRESSOR CAPACITOR | RED | RED |
| CC0 | COMPRESSOR CAPACITOR | RED | RED |
| CC10 | COMPRESSOR CAPACITOR | RED | RED |
| CC11 | COMPRESSOR CAPACITOR | RED | RED |
| CC12 | COMPRESSOR CAPACITOR | RED | RED |
| CC13 | COMPRESSOR CAPACITOR | RED | RED |
| CC14 | COMPRESSOR CAPACITOR | RED | RED |
| CC15 | COMPRESSOR CAPACITOR | RED | RED |
| CC16 | COMPRESSOR CAPACITOR | RED | RED |
| CC17 | COMPRESSOR CAPACITOR | RED | RED |
| CC18 | COMPRESSOR CAPACITOR | RED | RED |
| CC19 | COMPRESSOR CAPACITOR | RED | RED |
| CC20 | COMPRESSOR CAPACITOR | RED | RED |
| CC21 | COMPRESSOR CAPACITOR | RED | RED |
| CC22 | COMPRESSOR CAPACITOR | RED | RED |
| CC23 | COMPRESSOR CAPACITOR | RED | RED |
| CC24 | COMPRESSOR CAPACITOR | RED | RED |
| CC25 | COMPRESSOR CAPACITOR | RED | RED |
| CC26 | COMPRESSOR CAPACITOR | RED | RED |
| CC27 | COMPRESSOR CAPACITOR | RED | RED |
| CC28 | COMPRESSOR CAPACITOR | RED | RED |
| CC29 | COMPRESSOR CAPACITOR | RED | RED |
| CC30 | COMPRESSOR CAPACITOR | RED | RED |
| CC31 | COMPRESSOR CAPACITOR | RED | RED |
| CC32 | COMPRESSOR CAPACITOR | RED | RED |
| CC33 | COMPRESSOR CAPACITOR | RED | RED |
| CC34 | COMPRESSOR CAPACITOR | RED | RED |
| CC35 | COMPRESSOR CAPACITOR | RED | RED |
| CC36 | COMPRESSOR CAPACITOR | RED | RED |
| CC37 | COMPRESSOR CAPACITOR | RED | RED |
| CC38 | COMPRESSOR CAPACITOR | RED | RED |
| CC39 | COMPRESSOR CAPACITOR | RED | RED |
| CC40 | COMPRESSOR CAPACITOR | RED | RED |
| CC41 | COMPRESSOR CAPACITOR | RED | RED |
| CC42 | COMPRESSOR CAPACITOR | RED | RED |
| CC43 | COMPRESSOR CAPACITOR | RED | RED |
| CC44 | COMPRESSOR CAPACITOR | RED | RED |
| CC45 | COMPRESSOR CAPACITOR | RED | RED |
| CC46 | COMPRESSOR CAPACITOR | RED | RED |
| CC47 | COMPRESSOR CAPACITOR | RED | RED |
| CC48 | COMPRESSOR CAPACITOR | RED | RED |
| CC49 | COMPRESSOR CAPACITOR | RED | RED |
| CC50 | COMPRESSOR CAPACITOR | RED | RED |
| CC51 | COMPRESSOR CAPACITOR | RED | RED |
| CC52 | COMPRESSOR CAPACITOR | RED | RED |
| CC53 | COMPRESSOR CAPACITOR | RED | RED |
| CC54 | COMPRESSOR CAPACITOR | RED | RED |
| CC55 | COMPRESSOR CAPACITOR | RED | RED |
| CC56 | COMPRESSOR CAPACITOR | RED | RED |
| CC57 | COMPRESSOR CAPACITOR | RED | RED |
| CC58 | COMPRESSOR CAPACITOR | RED | RED |
| CC59 | COMPRESSOR CAPACITOR | RED | RED |
| CC60 | COMPRESSOR CAPACITOR | RED | RED |
| CC61 | COMPRESSOR CAPACITOR | RED | RED |
| CC62 | COMPRESSOR CAPACITOR | RED | RED |
| CC63 | COMPRESSOR CAPACITOR | RED | RED |
| CC64 | COMPRESSOR CAPACITOR | RED | RED |
| CC65 | COMPRESSOR CAPACITOR | RED | RED |
| CC66 | COMPRESSOR CAPACITOR | RED | RED |
| CC67 | COMPRESSOR CAPACITOR | RED | RED |
| CC68 | COMPRESSOR CAPACITOR | RED | RED |
| CC69 | COMPRESSOR CAPACITOR | RED | RED |
| CC70 | COMPRESSOR CAPACITOR | RED | RED |
| CC71 | COMPRESSOR CAPACITOR | RED | RED |
| CC72 | COMPRESSOR CAPACITOR | RED | RED |
| CC73 | COMPRESSOR CAPACITOR | RED | RED |
| CC74 | COMPRESSOR CAPACITOR | RED | RED |
| CC75 | COMPRESSOR CAPACITOR | RED | RED |
| CC76 | COMPRESSOR CAPACITOR | RED | RED |
| CC77 | COMPRESSOR CAPACITOR | RED | RED |
| CC78 | COMPRESSOR CAPACITOR | RED | RED |
| CC79 | COMPRESSOR CAPACITOR | RED | RED |
| CC80 | COMPRESSOR CAPACITOR | RED | RED |
| CC81 | COMPRESSOR CAPACITOR | RED | RED |
| CC82 | COMPRESSOR CAPACITOR | RED | RED |
| CC83 | COMPRESSOR CAPACITOR | RED | RED |
| CC84 | COMPRESSOR CAPACITOR | RED | RED |
| CC85 | COMPRESSOR CAPACITOR | RED | RED |
| CC86 | COMPRESSOR CAPACITOR | RED | RED |
| CC87 | COMPRESSOR CAPACITOR | RED | RED |
| CC88 | COMPRESSOR CAPACITOR | RED | RED |
| CC89 | COMPRESSOR CAPACITOR | RED | RED |
| CC90 | COMPRESSOR CAPACITOR | RED | RED |
| CC91 | COMPRESSOR CAPACITOR | RED | RED |
| CC92 | COMPRESSOR CAPACITOR | RED | RED |
| CC93 | COMPRESSOR CAPACITOR | RED | RED |
| CC94 | COMPRESSOR CAPACITOR | RED | RED |
| CC95 | COMPRESSOR CAPACITOR | RED | RED |
| CC96 | COMPRESSOR CAPACITOR | RED | RED |
| CC97 | COMPRESSOR CAPACITOR | RED | RED |
| CC98 | COMPRESSOR CAPACITOR | RED | RED |
| CC99 | COMPRESSOR CAPACITOR | RED | RED |
| CC00 | COMPRESSOR CAPACITOR | RED | RED |

BARB MFG. CO.
INC. 465-114 D
MILWAUKEE, WIS.
U.S.A.

| COMPONENT CODE | DESCRIPTION |
|----------------|-------------------------------|
| CC | COMPRESSOR CONTACTOR |
| CH | COMPRESSOR OVERCURRENT HEATER |
| CP | COMPRESSOR |
| DC | DUPL. CAP. CAPACTOR |
| DD | DUPL. CAP. CAPACTOR |
| EO | HEAT STRIP #1 |
| HA | HEATER CONTACTOR #1 |
| HC | HIGH PRESSURE CONTACTOR |
| HD | HEATER STRIP MOTOR |
| IR | INDOOR BLOWER RELAY |
| LC | LINE AMPLIFIER CONTROL |
| LR | LOCK OUT RELAY |
| LP | LINE PRESSURE BYPASS |
| LS | LINE PRESSURE CONTROL |
| LS | LIMIT SWITCH |
| OH | OUTDOOR FAN MOTOR |
| TR | TRANSFORMER |
| TR | TERMINAL BLOCK |
| TR | TERMINAL BLOCK 2 (OPT.) |
| TR | TRIP VALVE TERMINAL BLOCK |
| TR | TRIP RELAY |

USE OTHER CONTACTORS ONLY SUITABLE FOR AT LEAST 75° C



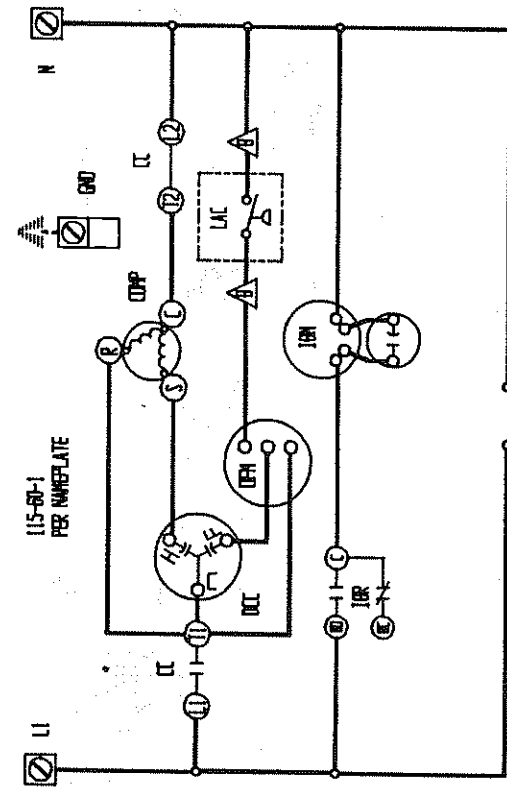
▲ LABELLED WIRES CONNECT IF NO OPTIONS USED.

| FACTORY SUP. | FIELD | OPTIONAL |
|--------------|-------|----------|
| TRIP VALVE | --- | --- |
| TRIP VALVE | --- | --- |
| ACCESSORY | --- | --- |

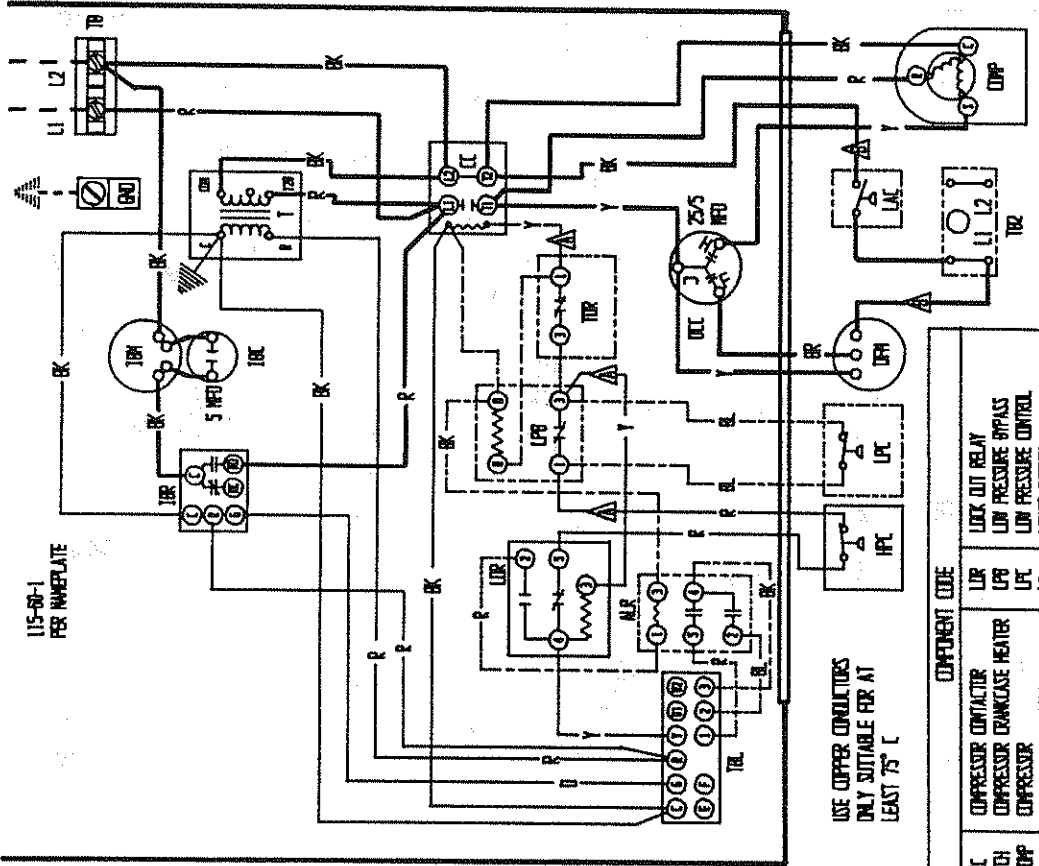
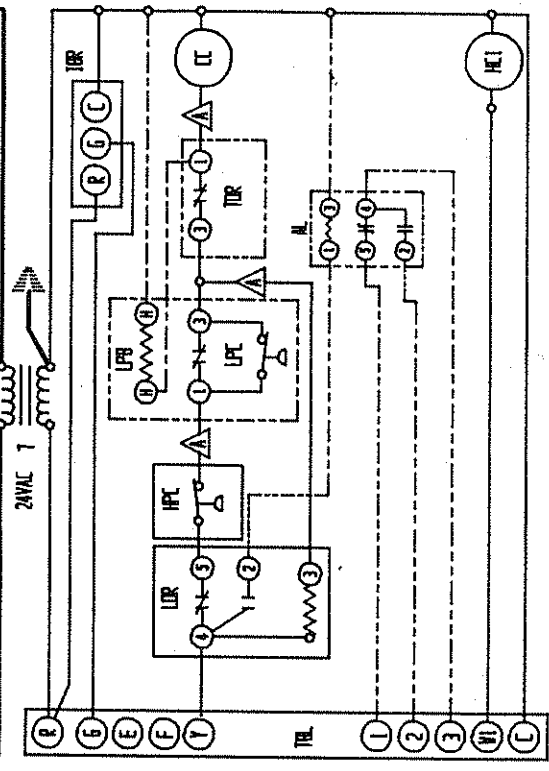
▲ MOVE RED WIRE TO 200V TAP FOR 200V OPERATION

| COLOR CODE | WIRE COLOR | WIRE COLOR | WIRE COLOR | WIRE COLOR | WIRE COLOR | WIRE COLOR | WIRE COLOR | WIRE COLOR | WIRE COLOR | WIRE COLOR | |
|------------|------------|------------|------------|------------|------------|------------|------------|------------|------------|------------|----------|
| R | BLACK | Y | YELLOW | V | VIOLET | T | TRIP | JM | PINK | BAR | BAR |
| R | BROWN | G | GREEN | (R) | RED | R | RED | P | PURPLE | 4095-115 | 4095-115 |
| D | ORANGE | B | BLUE | (S) | SLATE | L | LAVENDER | | | | |

BARCO MFG. CO.
4095-115 D



115-RP-1
PER NAMEPLATE



115-RP-1
PER NAMEPLATE

USE COPPER CONDUCTORS
ONLY SUITABLE FOR AT
LEAST 75 °C

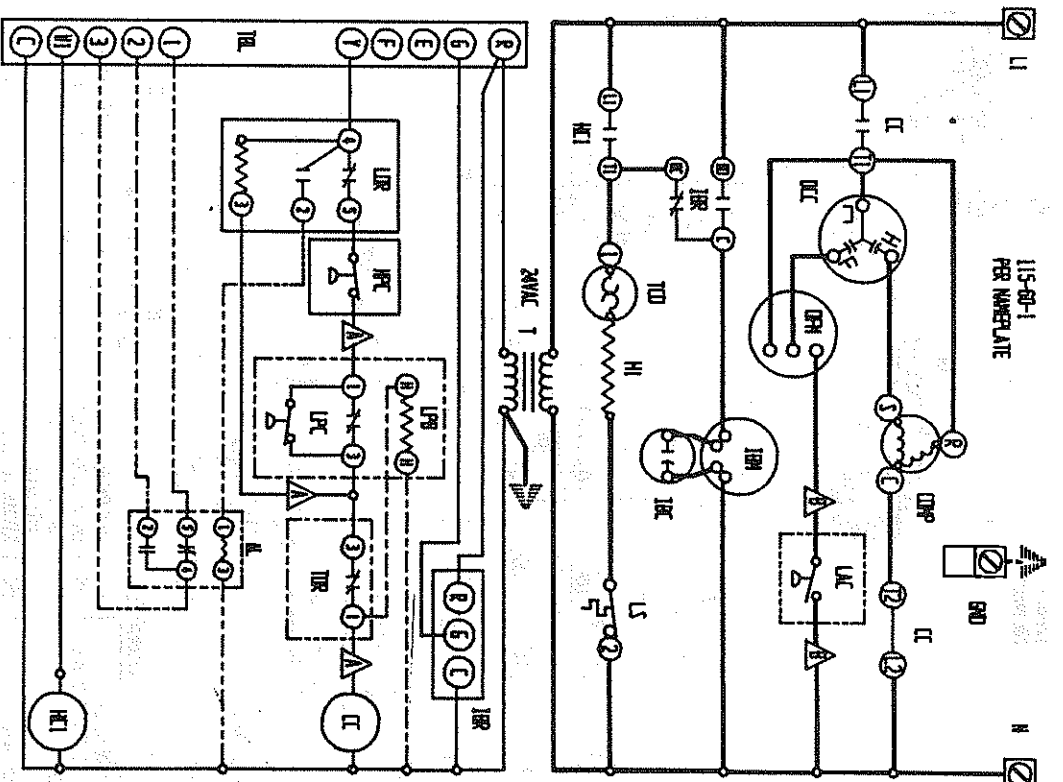
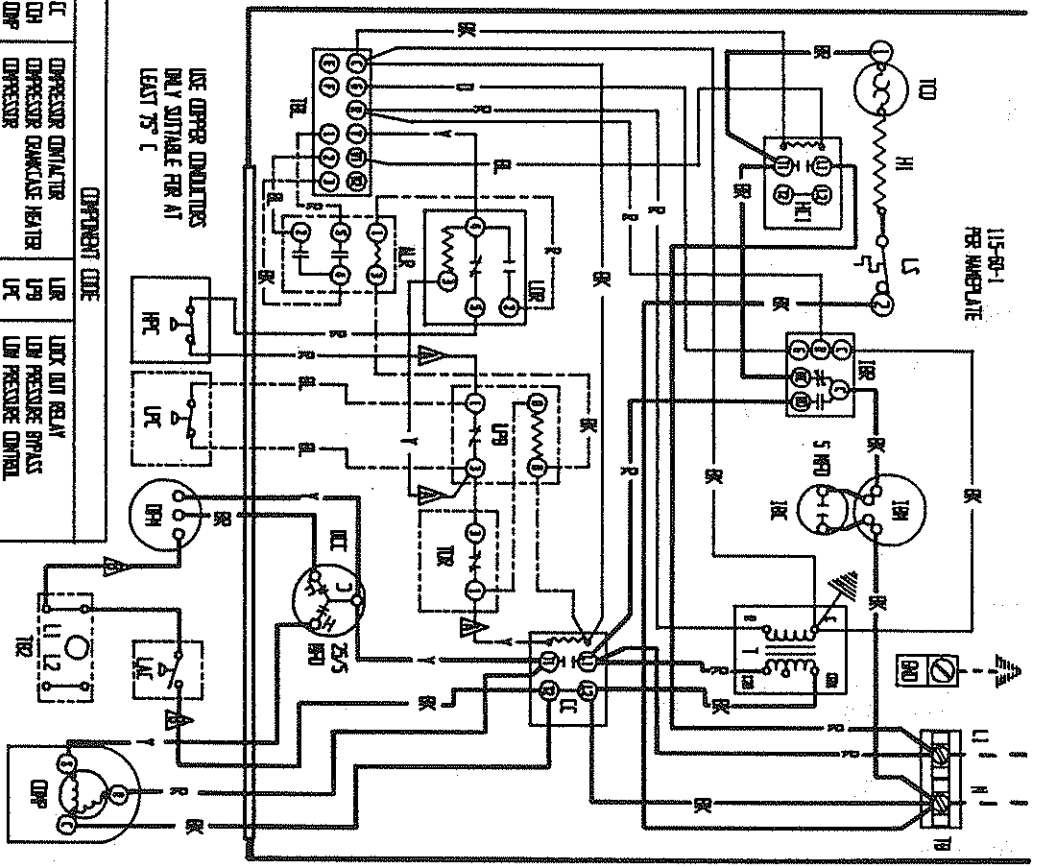
| | | | | | | | | | | | | |
|----------------------|---------------------|----------------------------|---------------------|--------------------|------------------|----------------|-------------------------|-----------------------|-------------------------|---------------------|---------------------|---------------------|
| CC | CO | COP | DEL | END | HI | HCI | IFC | IBC | IM | IR | LAC | |
| COMPRESSOR CONTACTOR | COMPRESSOR | COMPRESSOR OVERLOAD HEATER | COMPRESSOR | DUAL CAN CAPACITOR | EQUIPMENT GROUND | HEAT STRIP #1 | HEATER CONTACTOR #1 | HIGH PRESSURE CONTROL | INDOOR BLOWER CAPACITOR | INDOOR BLOWER MOTOR | INDOOR BLOWER RELAY | LOW AMBIENT CONTROL |
| LUR | LIF | LFC | LS | IFM | TR | TR | TR | TR | TR | TR | TR | |
| LOCK OUT RELAY | LOW PRESSURE BYPASS | LOW PRESSURE CONTROL | LOW PRESSURE SWITCH | OUTDOOR FAN MOTOR | TRANSFORMER | TERMINAL BLOCK | TERMINAL BLOCK 2 (OPT.) | TERMINAL BLOCK | LOW VOLTAGE TERMINAL | TERMINAL CUTOFF | TIME DELAY RELAY | |

▲ LABELED WIRES CONNECT IF NO OPTIONS USED.

| | |
|--------------|----------|
| HIGH VOLTAGE | OPTIONAL |
| LOW VOLTAGE | FIELD |
| NECESSARY | --- |

| | | | |
|--------|--------|--------|----------|
| BLACK | YELLOW | VIOLET | TAN |
| BRN | GREEN | PURPLE | PINK |
| RED | BLUE | GRAY | LAVENDER |
| ORANGE | WHITE | SLATE | |
| TEL | 1 | 2 | 3 |
| 4 | 5 | 6 | 7 |
| 8 | 9 | 10 | 11 |
| 12 | 13 | 14 | 15 |

BARD MFG. CO.
4095-116 D



COMPONENT CODE

| | | | |
|-----|-----------------------------|-----|-------------------------------|
| CC | COMPRESSOR CONTACTOR HEATER | UB9 | LOCK OUT BELAY |
| CP | COMPRESSOR CONTACTOR HEATER | UB7 | UB PRESSURE SWITCH |
| DC | DUPL. CAP. CAPACTOR | UB8 | UB PRESSURE CONTROL |
| ND | EQUIPMENT SOUND | UB1 | LIMIT SWITCH |
| SD | HEAT STRIP #1 | UB2 | OUTDOOR FAN MOTOR |
| HI | HEATER CONTACTOR #1 | UB3 | TRANSFORMER |
| HI1 | HIGH PRESSURE CONTROL | UB4 | TERMINAL BLOCK 2 (OPT.) |
| HC | HEATER BLINDER MOTOR | UB5 | UB VOLTAGE TERMINAL BLOCK |
| IR | HEATER BLINDER RELAY | UB6 | THERMAL LIMIT-THE RELAY RELAY |
| LAC | LOW AMBIENT CONTROL | | |

▲ LABELED WIRES CORRECT IF NO OPTIONS USED.

| | | |
|--------------|-------|----------|
| FACTORY STD. | FIELD | OPTIONAL |
| HIGH VOLTAGE | --- | --- |
| LOW VOLTAGE | --- | --- |
| ACCESSORY | --- | --- |

| | | | | | | | | | | | | | | | |
|--------|-------|------|--------|-----|-----|-----|-----|--------|--------|------|-------|---|---|------|----------|
| BLACK | BROWN | RED | ORANGE | Y | G | B | W | V | (R) | (S) | T | R | L | PINK | LAURENCE |
| YELLOW | GREEN | BLUE | WHITE | (R) | (S) | (S) | (S) | VIOLET | PURPLE | GRAY | SLATE | T | R | PINK | LAURENCE |

BARCO MFG. CO.
4095-117 D