



# INSTALLATION INSTRUCTIONS

---

## WALL MOUNTED CABINET AIR CONDITIONER

**MODEL:  
CT241**

---

**BARD MANUFACTURING COMPANY**  
**Bryan, Ohio 43506**

*Since 1914...Moving ahead, just as planned.*

Manual:	2100-314
Supersedes:	
File:	Volume II, Tab 15
Date:	November 12, 1997

# Contents

---

<b>GENERAL INFORMATION .....</b>	<b>2</b>
CT Model Nomenclature .....	2
Shipping Damage .....	4
General .....	4
Duct Work .....	4
Installation Clearances .....	4
Filters .....	4
Condensate Drain .....	4
<b>INSTALLATION INSTRUCTIONS .....</b>	<b>5</b>
Wall Mounting Information .....	5
Mounting the Unit .....	5
Wiring – Main Power .....	5
Wiring – Low Voltage Wiring .....	5
How to Set an Adjustable Anticipator .....	10
Additional Information for Electric Heat or Heat Pump Applications .....	10
<b>START-UP .....</b>	<b>11</b>
Important Installer Note .....	11
Service Hints .....	11
Sequence of Operation .....	11
Compressor Safeguard Control .....	11
Pressure Service Ports .....	11
<b>TROUBLE SHOOTING .....</b>	<b>12</b>
Fan Blade Setting Dimensions .....	
<b>WIRING DIAGRAMS .....</b>	<b>13</b>

## FIGURES

Figure 1 Unit Dimensions .....	3
Figure 2 Mounting Instructions .....	6
Figure 3 Mounting Instructions Using Optional MBC-2 Side Mounting Brackets .....	7
Figure 4 Common Wall Mounting Installations .....	8
Figure 5 Low Voltage Wiring .....	9
Figure 6 Setting Anticipator .....	10
Figure 7 Amprobe .....	10
Figure 8 Fan Blade Setting Dimensions .....	12

## TABLES

Table 1 Electric Heat Table .....	2
Table 2 .....	2
Table 3 Thermostat Wire Size .....	9
Table 4 Wall Thermostat and Subbase Combinations .....	9
Table 5 Fan Blade Setting Dimensions .....	12
Table 6 Indoor Blower Performance .....	12
Table 7 Rated CFM and ESP .....	12
Table 8 Maximum ESP of Operation (Electric Heat Only) .....	12
Table 9 Pressure Table .....	13

# Getting Other Information and Publications

---

se publications can help you install the air conditioner or heat pump. You can usually find these at your local library or purchase them directly from the publisher. Be sure to consult current edition of each standard.

National Electrical Code ..... ANSI/NFPA 70

Standard for the Installation ..... ANSI/NFPA 90A  
of Air Conditioning and  
Ventilating Systems

Standard for Warm Air ..... ANSI/NFPA 90B  
Heating and Air  
Conditioning Systems

Load Calculation for Residential ..... ACCA Manual J  
Winter and Summer  
Air Conditioning

Duct Design for Residential ..... ACCA Manual D  
Winter and Summer Air Conditioning  
Equipment Selection

## For more information, contact these publishers:

**ACCA — Air Conditioning Contractors of America**  
1712 New Hampshire Avenue  
Washington, DC 20009  
Telephone: (202) 483-9370  
Fax: (202) 234-4721

**ANSI — American National Standards Institute**  
11 West Street, 13th Floor  
New York, NY 10036  
Telephone: (212) 642-4900  
Fax: (212) 302-1286

**ASHRAE — American Society of Heating Refrigerating, and  
Air Conditioning Engineers, Incorporated**  
1791 Tullie Circle, N.E.  
Atlanta, GA 30329-2305  
Telephone: (404) 636-8400  
Fax: (404) 321-5478

**NFPA — National Fire Protection Association**  
Batterymarch Park  
P.O. Box 9101  
Quincy, MA 02269-9901  
Telephone: (800) 344-3555  
Fax: (617) 984-7057

# CT Series General Information

## CT Model Nomenclature

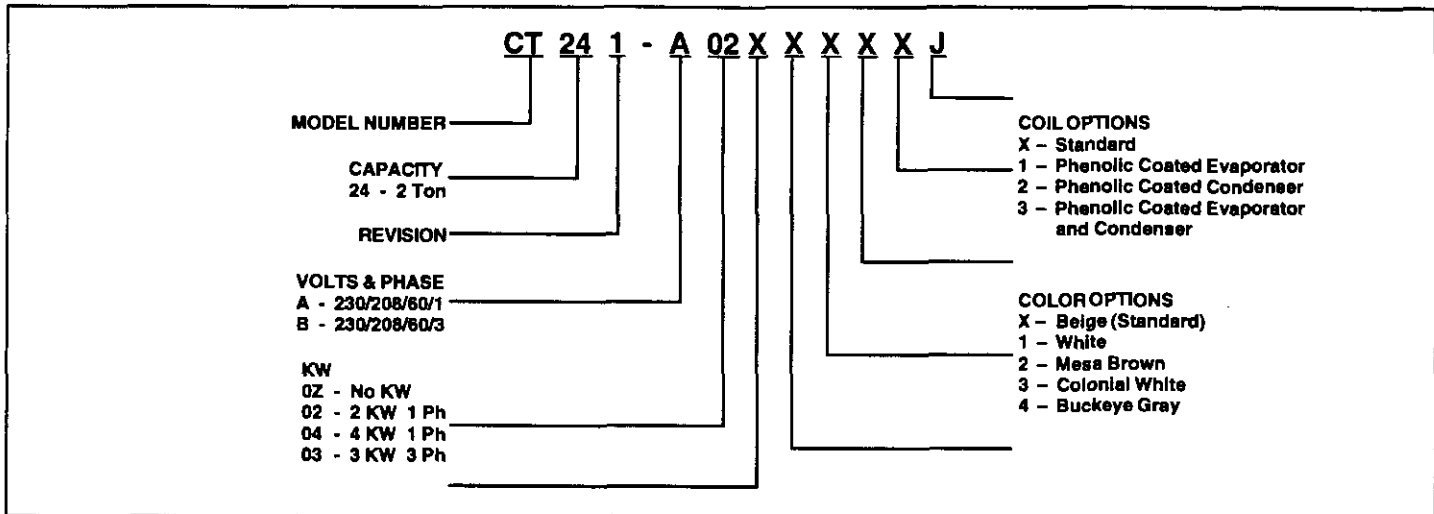


TABLE 1 - ELECTRIC HEAT TABLE

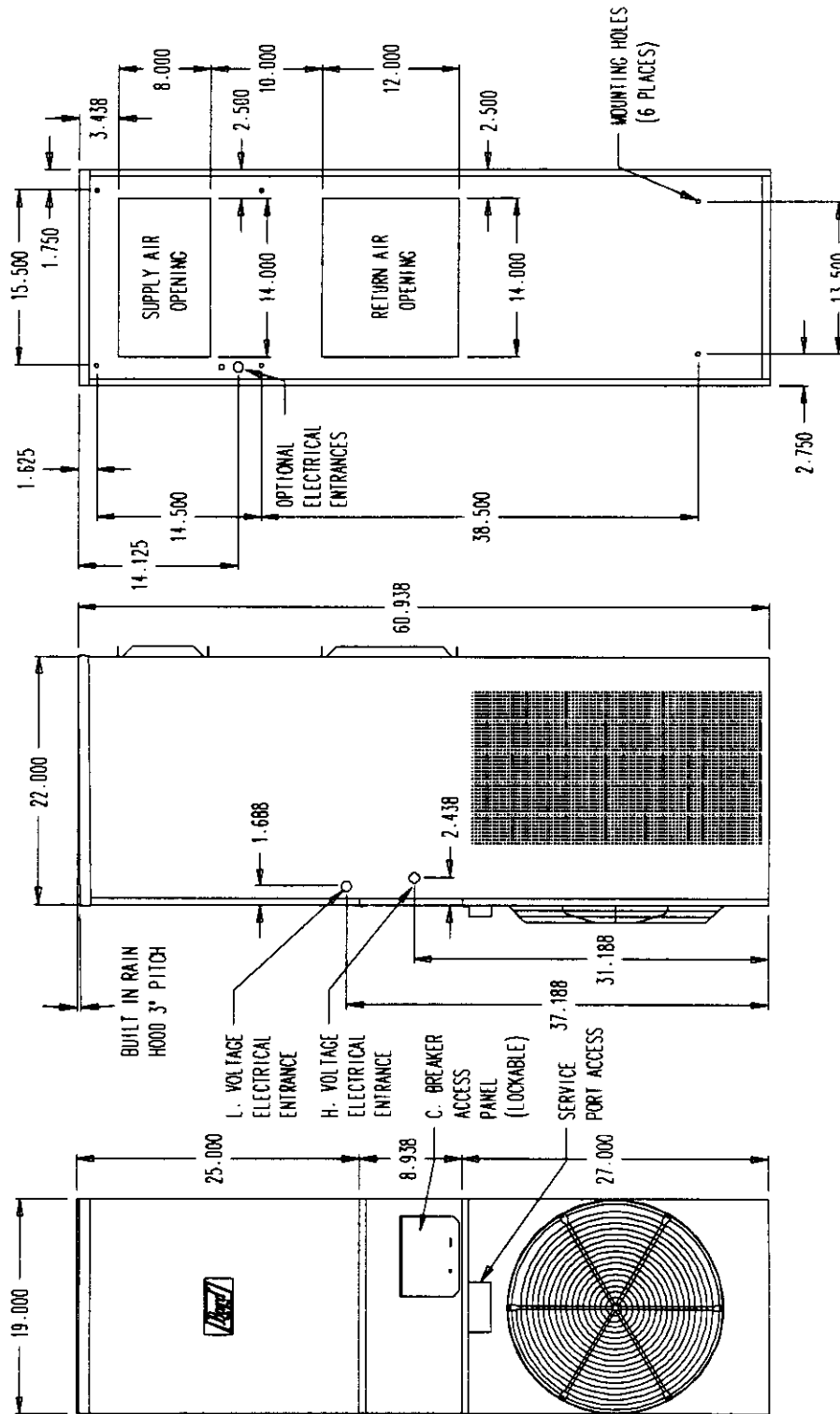
Models	CT241-A				CT241-B				
	240-1		208-1		240-1		208-1		
	KW	A	BTU	A	BTU	A	BTU	A	BTU
2	8.3	6800	7.2	5100					
4	16.7	13650	14.4	10230					
3					7.2	10240	6.3	7650	

TABLE 2

SINGLE CIRCUIT							
Model	Rated Volts and Phase	No. Field Power Circuits	(3) Minimum Circuit Ampacity	(1) Maximum External Fuse or Circuit Breaker	(2) Field Power Wire Size	(2) Ground Wire Size	Unit Wiring Diagram
CT241-A0Z	230/208-1	1	19	30	12	12	4104-100
A02		1	19	30	12	12	4104-110
A04		1	24	30	10	10	4104-120
CT241-B0Z	230-208-3	1	14	20	14	12	4104-200
B03		1	14	20	14	12	4104-210

- (1) Maximum size of the time delay fuse or HACR type circuit breaker for protection of fieldwiring conductors.
- (2) Based on 75°C copper wire. All wiring must conform to NEC and all local codes.
- (3) These "Minimum Circuit Ampacity" values are to be used for sizing the field power conductors. Refer to the National Electrical Code (latest revision), Article 310 for power conductor sizing. **CAUTION:** When more than one field power conductor circuit is run through one conduit, the conductors must be derated. Pay special attention to Note 8 of Table 310 regarding Ampacity Adjustment Factors when more than 3 conductors are in a raceway.

FIGURE 1 -- UNIT DIMENSIONS



MIS-1034

# GENERAL INFORMATION

---

## SHIPPING DAMAGE

Upon receipt of equipment, the carton should be checked for external signs of shipping damage. If damage is found, the receiving party must contact the last carrier immediately, preferably in writing, requesting inspection by the carrier's agent.

## GENERAL

The equipment covered in this manual is to be installed by trained, experienced service and installation technicians.

The refrigerant system is completely assembled and charged. All internal wiring is complete.

The unit is designed for use with or without duct work. Flanges are provided for attaching the supply and return ducts.

These instructions explain the recommended method to install the air cooled self-contained unit and the electrical wiring connections to the unit.

These instructions and any instructions packaged with any separate equipment required to make up the entire air conditioning system should be carefully read before beginning the installation. Note particularly "Starting Procedure" and any tags and/or labels attached to the equipment.

While these instructions are intended as a general recommended guide, they do not supersede any nation and/or local codes in any way. Authorities having jurisdiction should be consulted before the installation is made. See Page 1 for information on codes and standards.

Size of unit for a proposed installation should be based on heat loss calculation made according to methods of Air Conditioning Contractors of America (ACCA). The air duct should be installed in accordance with the Standards of the National Fire Protection Association for the Installation of Air Conditioning and Ventilating systems of Other Than Residence Type, NFPA No. 90A, and Residence Type Warm Air Heating and Air Conditioning Systems, NFPA No. 90B. Where local regulations are at a variance with instructions, installer should adhere to local codes.

## DUCT WORK

All duct work, supply and return, must be properly sized for the design air flow requirement of the equipment. Air Conditioning Contractors of America (ACCA) is an excellent guide to proper sizing. All duct work or portions thereof not in the conditioned space should be properly insulated in order to both conserve energy and prevent condensation or moisture damage.

Refer to Table 8 for maximum static pressure available for duct design.

Design the duct work according to methods given by the Air Conditioning Contractors of America (ACCA). When duct runs through unheated spaces, it should be insulated with a minimum of one inch of insulation. Use insulation with a vapor barrier on the outside of the insulation. Flexible joints should be used to connect the duct work to the equipment in order to keep the noise transmission to a minimum.

Ducts through the walls must be insulated and all joints taped or sealed to prevent air or moisture entering the wall cavity.

Duct work, if used is approved for zero (0) inches to combustibles.

## INSTALLATION CLEARANCES

Basic unit is approved for zero (0) inches to combustible to the rear of the unit.

The basic unit is approved for three (3) inches clearance on the left and right sides. The basic unit is approved for thirty-Six (36) inches clearances to front of unit.

## FILTERS

No filter is supplied with unit. A return filter grille is required (Bard Return Filter Grille RFGC-2) must be installed with a one inch washable filter (Bard Filter 7003-048). Both parts must be ordered separately.

## CONDENSATE DRAIN

A plastic drain hose extends from the drain pan at the top of the unit down to the unit base. There are openings in the unit base for the drain hose to pass through. In the event the drain hose is connected to a drain system of some type, it must be an open or vented type system to assure proper drainage.

# INSTALLATION INSTRUCTIONS

## ALL MOUNTING INFORMATION

1. These units are secured by mounting the unit to the outside wall surface from inside the unit. Field installed mounting brackets which secure the unit from both sides are available as accessory items.
2. On wood frame walls, the wall construction must be strong and rigid enough to carry the weight of the unit without transmitting any unit vibration. On wood frame walls, unit requires supply and return air sleeve.
3. Concrete block walls must be thoroughly inspected to insure that they are capable of carrying the weight of the unit to be installed.

## MOUNTING THE UNIT

1. Two holes for the supply and return air openings, must be cut through the wall as shown in Figure 2 on Page 6.
2. Locate and mark lag bolt locations and bottom mounting bracket location, if desired. (See Figure 2.)
3. Mount bottom mounting bracket if used. (Optional)
4. Hook top rain flashing under back bend of top. Top rain flashing is shipped attached to the back of the unit on the right side. (See Figure 2.)
5. Position unit in opening and secure with 5/16 lag bolts. Use 5/16 inch diameter flat washers on the lag bolts.
6. Secure rain flashing to wall and caulk across entire length of top. (See Figure 2.)
7. For additional mounting rigidity, the return air and supply air frames or collars can be drilled and screwed or welded to the structural wall itself (depending upon wall construction).

*NOTE: Approved for 0 inches clearance to combustible surfaces.*

8. On side by side installations, maintain a minimum of 3 inches clearance on side to allow proper airflow to outdoor coil.

Figure 4 on Page 8 illustrates some common wall mounting installations.

*NOTE: Optional side mounting brackets can be used. Secure brackets to cabinet using common side screws. Secure brackets to wall with 5/16 inch lag bolts and 5/16 inch diameter washers. (See Figure 3 on Page 7.)*

## WIRING – MAIN POWER

Refer to the unit rating plate for wire sizing information and maximum fuse of “HACR Type” circuit breaker size. Each outdoor unit is marked with a “Minimum Circuit Ampacity”. This means that the field wiring used must be sized to carry that amount of current. Depending on the installed KW of electric heat, there may be two field power circuits required. If this is the case, the unit serial plate will so indicate. All models are suitable only for connection with copper wire. Each unit and/or wiring diagram will be marked “Use Copper Conductors Only”. These instructions *MUST* be adhered to. Refer to the National Electrical Code (NEC) for complete current carrying capacity data on the various insulation grades of wiring material. All wiring must conform to NEC and all local codes.

The electrical data lists fuse and wire sizes (75°C copper) for all models including the most commonly used heater sizes. Also shown are the number of field power circuits required for the various models with heaters.

The unit rating plate lists a “Maximum Time Delay Relay Fuse” or “HACR Type” circuit breaker that is to be used with the equipment. The correct size must be used for proper circuit protection and also to assure that there will be no nuisance tripping due to the momentary high starting current of the compressor motor.

The disconnect access door on this unit may be locked to prevent unauthorized access to the disconnect. To convert for the locking capability, bend the tab located in the bottom left hand corner of the disconnect opening under the disconnect access panel straight out. This tab will now line up with the slot in the door. When shut a padlock may be placed through the hole in the tab preventing entry.

## WIRING – LOW VOLTAGE WIRING

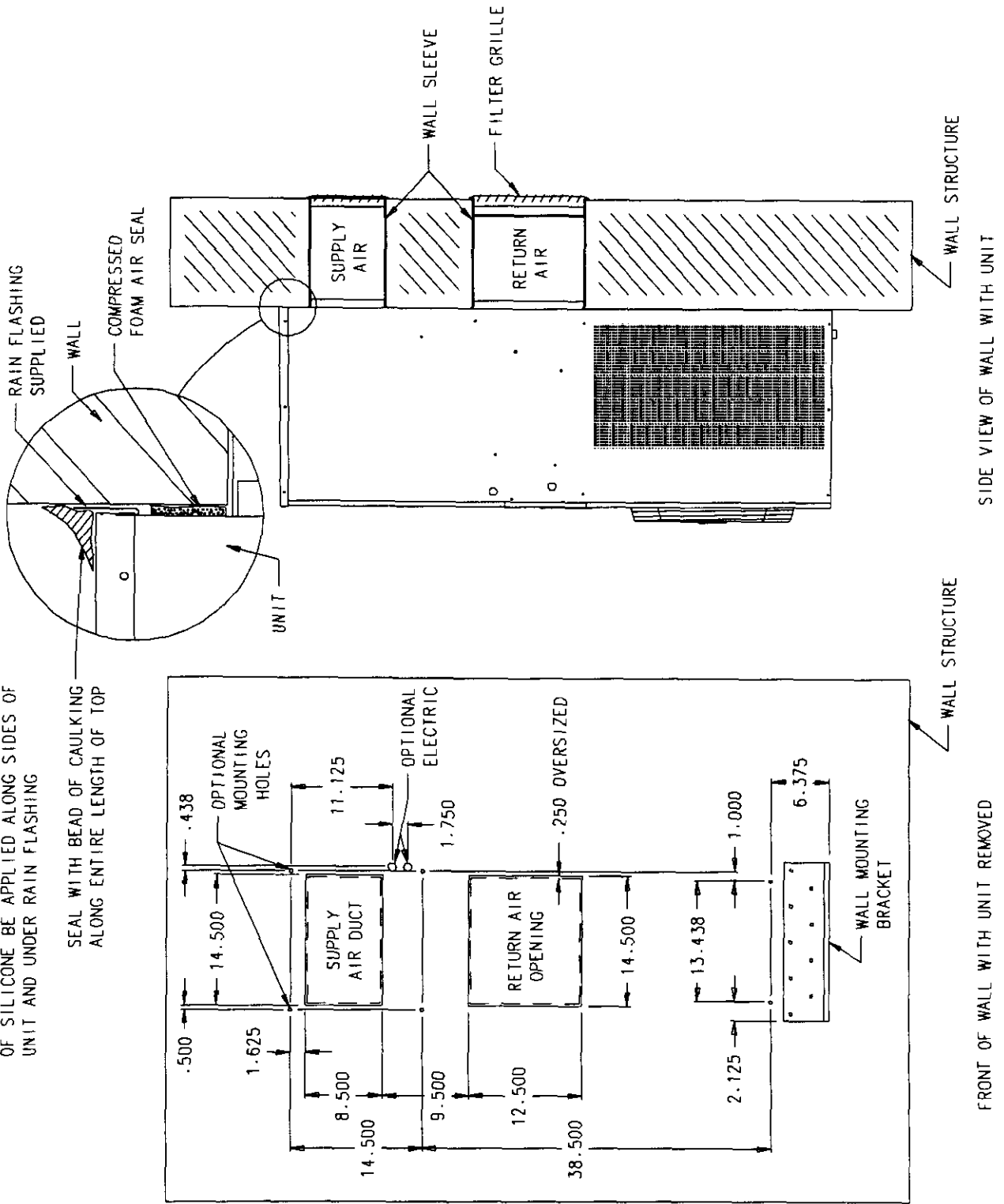
All models are equipped with dual primary voltage transformers. All equipment leaves the factory wired on 240V tap. For 208V operation, reconnect from 240V to 208V tap. The acceptable operating voltage range for the 240V and 208V taps are:

TAP	RANGE
240	253 -- 216
208	220 -- 187

*NOTE: The voltage should be measured at the field power connection point in the unit and while the unit is operating at full load (maximum amperage operating condition).*

**FIGURE 2 - MOUNTING INSTRUCTIONS**

NOTE: IT IS RECOMMENDED THAT A BEAD OF SILICONE BE APPLIED ALONG SIDES OF UNIT AND UNDER RAIN FLASHING

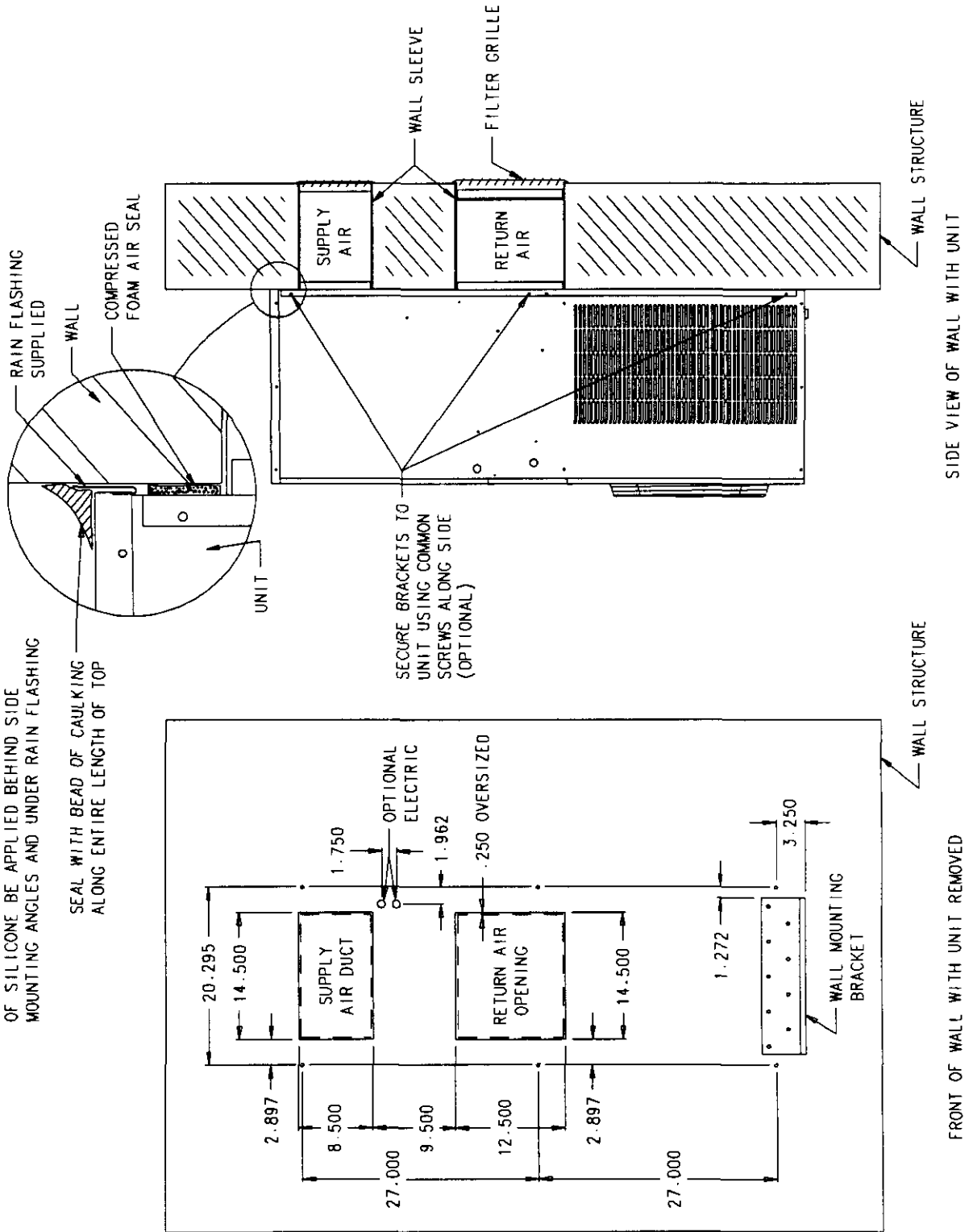


MIS-1151



**FIGURE 3 -- MOUNTING INSTRUCTIONS USING OPTIONAL MBC-2 SIDE MOUNTING BRACKETS**

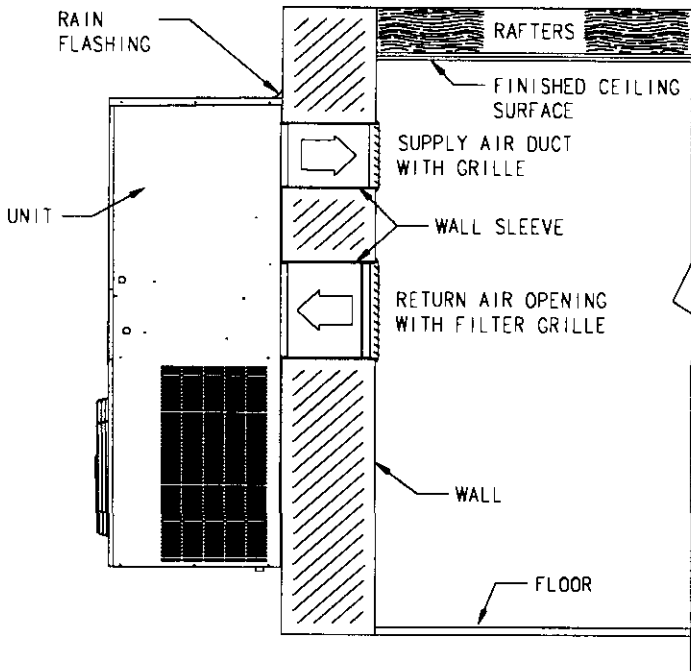
NOTE: IT IS RECOMMENDED THAT A BEAD OF SILICONE BE APPLIED BEHIND SIDE MOUNTING ANGLES AND UNDER RAIN FLASHING



MIS-1183

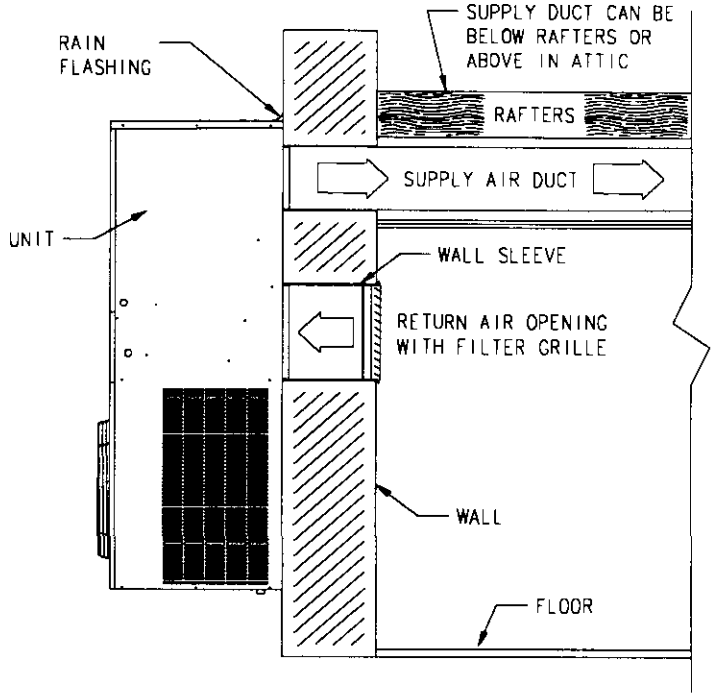
**FIGURE 4 - COMMON WALL MOUNTING INSTALLATIONS**

FREE AIR FLOW, NO DUCT



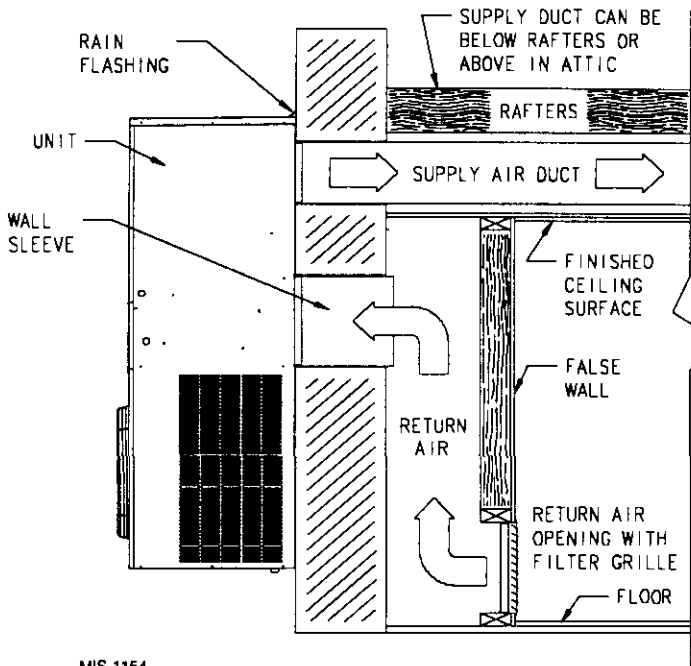
MIS-1152

DUCTED SUPPLY WITH RETURN AT UNIT



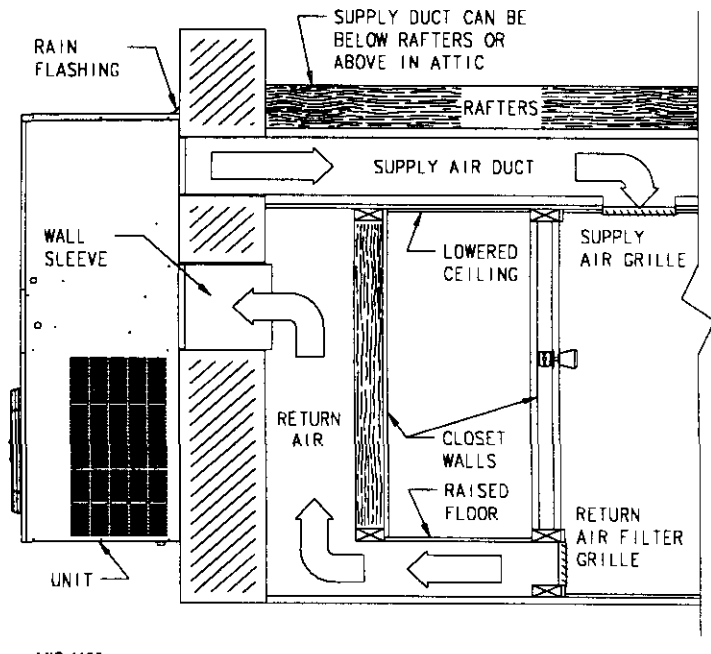
MIS-1153

FALSE WALL INSTALLATION



MIS-1154

CLOSET INSTALLATION



MIS-1155

Four (4) wires should be run from thermostat subbase to the 24V terminal board in the unit. A four conductor, 18 gauge copper, color coded thermostat cable is recommended. The connection points are shown in Figure 5.

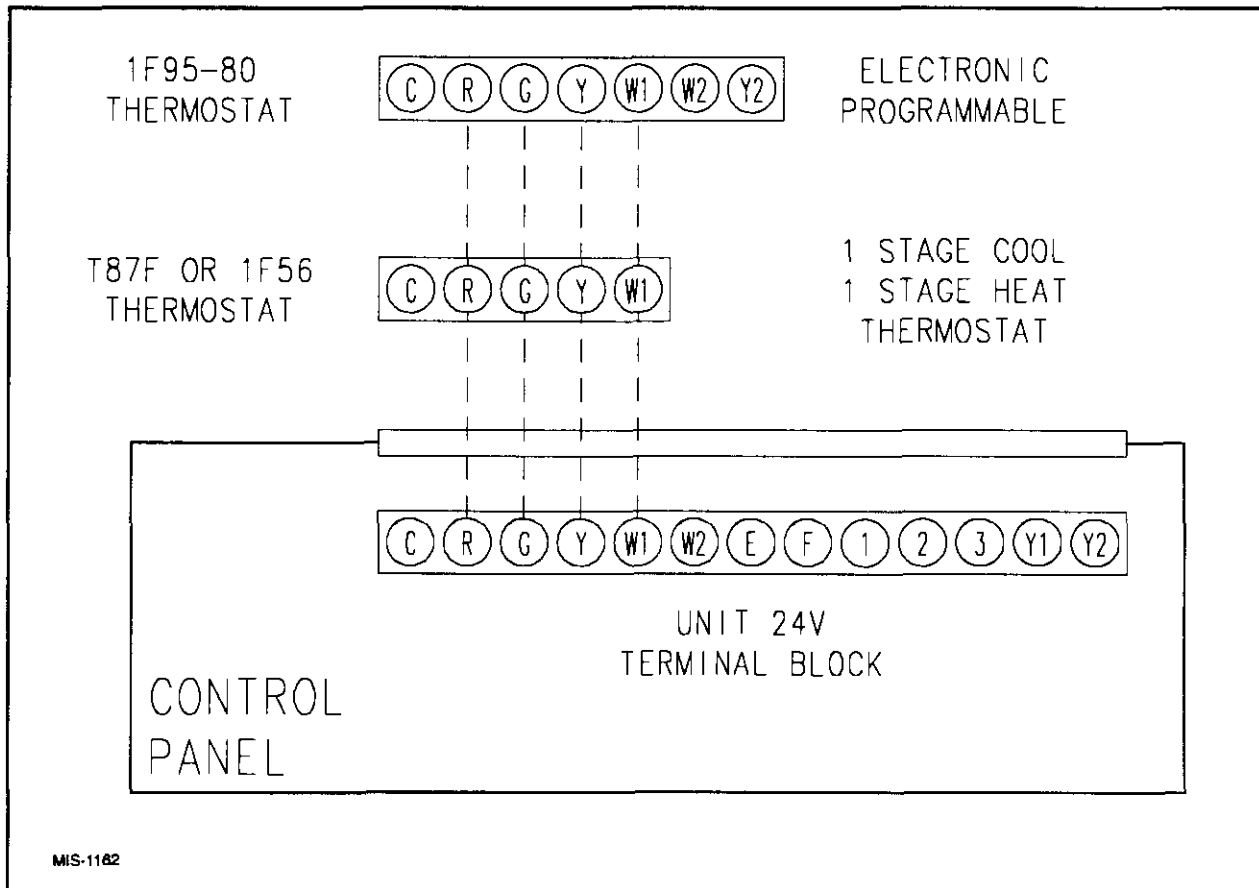
**TABLE 3 – THERMOSTAT WIRE SIZE**

Transformer VA	FLA	Wire Gauge	Maximum Distance In Feet
55	2.3	20 gauge	45
		18 gauge	60
		16 gauge	100
		14 gauge	160
		12 gauge	250

**TABLE 4 – WALL THERMOSTAT AND SUBBASE COMBINATIONS**

Thermostat	Subbase	Predominate Features
8403-002 T87F311	8404-003 Q539A1220	1 stage heat, 1 stage cool System: heat-off-cool Fan: on-auto
8403-009 1F56-318	---	1 stage heat, 1 stage cool System: heat-off-cool Fan: on-auto
8403-035 1F95-80	---	2 stage cool, 2 stage heat Programmable Electronic

**FIGURE 5 – LOW VOLTAGE WIRING**

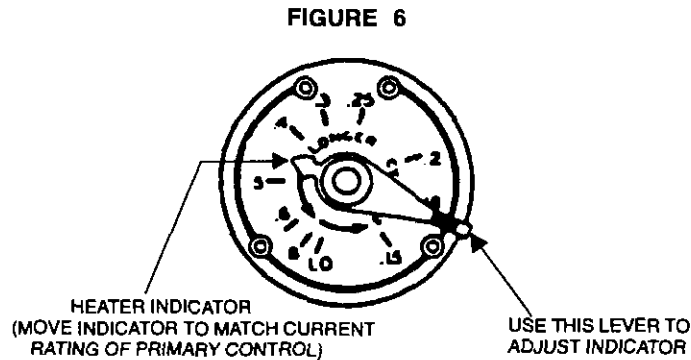


MIS-1182

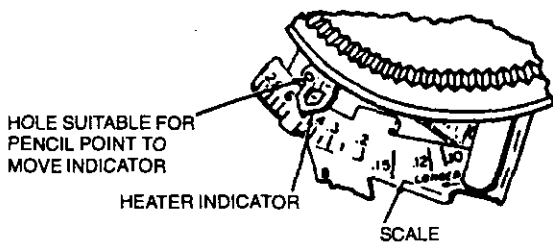
## HOW TO SET AN ADJUSTABLE ANTICIPATOR

The primary purpose of the adjustable anticipator thermostat is to provide a *single thermostat* to *match almost any type of primary control* in the field today.

The adjustable heat anticipator has a slide wire adjustment with the point scale marked in tenths of an ampere. This is used to set the anticipator to agree with the control amp draw of the control system in use. Refer to Figure 6.



OR



If the primary control nameplate has no rating or if further adjustment is necessary, use the following procedure to determine the current draw of each stage:

The current draw of each heating stage must be measured with the thermostat removed and the power on.

1. Connect an AC ammeter of appropriate range between the heating terminals of the subbase.  
 Stage 1 – between W1 and RH or R  
 Stage 2 – between W2 and RH or R
2. Move the system switch to *HEAT* or *AUTO*.
3. After one minute, read the ammeter and record the reading.
4. After mounting the thermostat, set the adjustable heat anticipator(s) to match the respective reading(s) measured in Step 3.

If you want to change the cycle of the heating system you can make a simple adjustment on the anticipator to do this.

Additional adjustment, if necessary, may be made as follows:

*Heater cycles too short* – set adjustable heater to a slightly higher dial setting (1/2 division).

*Heater cycles too long* – set adjustable heater to a slightly lower dial setting (1/2 division).

Occasionally you may find a system where longer or shorter cycles of the primary control are desirable. If the primary control draws .45 amps and you want a longer cycle, set the anticipator to .5 or .6 amps. This puts *less* resistance in the circuit. With less resistance, but the same current (from the primary control), you will generate less “false” heat and get a longer cycle of the primary control.

If a setting .45 amps on the adjustable anticipator gives a cycle that is longer than desired, reset the indicator to .3 or .25 amps. This will put *more* resistance in the circuit and thus generate more “false” heat for shorter cycle.

## ADDITIONAL INFORMATION FOR ELECTRIC HEAT OR HEAT PUMP APPLICATIONS

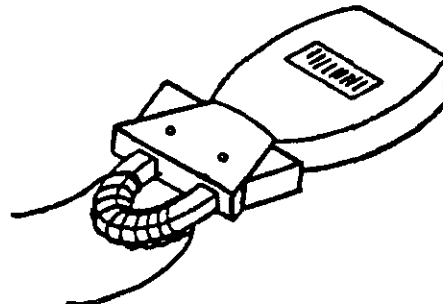
Adjust heat anticipator to match current rating of heating relay for W1 (and W2 if 2 stage). Move indicator on the scale to correspond with this current rating.

If the current rating is not given, proceed as follows:

1. Wrap exactly 10 loops of thermostat wire (W1) around the prongs of an Amprobe. (See Figure 7.)
2. Let the heating system operate for one minute before reading the W1 or W2 current draw.
3. Divide the reading obtained in Step 2 by 10.
4. Use the value calculated in Step 3 to set the heat.
5. Repeat the procedure for W2 if 2 stage heat anticipator.

**Example:**  $\frac{6.0 \text{ Amp}}{10 \text{ loops}} = .6A$

**FIGURE 7**



**NOTE:** Cooling anticipators on all thermostat are fixed and do not require setting.

# START-UP

---

## IMPORTANT INSTALLER NOTE

For improved start-up performance, wash the indoor coil with a dish detergent.

## SERVICE HINTS

1. Caution building owner/operator to maintain clean air filters at all times; also not to needlessly close off supply and return air registers. This reduces air flow through the system which shortens equipment service life as well as increasing operating costs.
2. Check all power fuses or circuit breakers to be sure they are the correct rating.
3. Periodic cleaning of the outdoor coil to permit full and unrestricted airflow circulation is essential.

## SEQUENCE OF OPERATION

### COOLING

Circuit R-Y makes at thermostat pulling in compressor contactor, starting the compressor and outdoor motor. The G (indoor motor) unit is automatically completed on any call for cooling operation and can be energized by manual fan switch on subbase for constant air circulation. On a call for heating, circuit R-W1 makes at the thermostat pulling in heat contact for the strip heat and blower operation.

All models are equipped with a two speed outdoor fan which is controlled by an outdoor thermostat. When the outdoor conditions are above 90° F, the fan will run on high speed. Below 90° F the fan will run on low speed.

### COMPRESSOR SAFEGUARD CONTROL

All models are equipped with a compressor safeguard control. This control is an anti-short cycle/lockout timer with high and low pressure switch monitoring and alarm relay output.

### MODE OF OPERATION

#### Delay on Make Timer

- On a call for cooling the delay on make period begins (adjustable from 30-180 seconds).
- When the delay on make is complete, and the high pressure switch is closed, the compressor contactor is energized.

### High Pressure Switch and Lockout Sequence

- If the high pressure switch opens, the compressor contactor will de-energize immediately. The lockout timer will go into a soft lockout and stay in soft lockout until the high pressure switch closes and the delay on make time has expired.
- If the high pressure switch opens again in this same operating cycle the unit will go into manual lockout condition and the alarm relay circuit will energize.
- Recycling the wall thermostat resets the manual lockout.

### Low Pressure Switch, Bypass and Lockout Sequence

- If the low pressure switch opens for more than 120 seconds, the compressor contactor will de-energize and go into a soft lockout.
- Regardless the state of the low pressure switch, the contactor will re-energize after the delay on make time delay has expired.
- If the low pressure switch remains open, or opens again for longer than 120 seconds the unit will go into manual lockout condition and the alarm relay circuit will energize.
- Recycling the wall thermostat resets the manual lockout.

*NOTE: Both high and low pressure switch controls are inherently automatic reset devices. The high pressure switch opens at 425 and closes at 325 psig, and the low pressure switch opens at 14 and closes at 30 psig. The lockout features, both soft and manual, are a function of the Compressor Safeguard Control.*

All models are equipped with a low ambient fan cycling control for low ambient operation. Down to 0° F, the fan cycling control will turn on the fan at 280 psig discharge pressure and turn off the fan at 180 psig discharge pressure.

### PRESSURE SERVICE PORTS

High and low pressure service ports are installed on all units so that the system operating pressures can be observed. Pressure curves can be found later in the manual covering all models. It is imperative to match the correct pressure curve to the unit by model number.

# TROUBLE SHOOTING

## FAN BLADE SETTING DIMENSIONS

Shown in the drawing below are correct fan blade setting dimensions for proper air delivery across the outdoor coil.

Any service work requiring removal or adjustment in the fan and/or motor area will require that the dimensions below be checked and blade adjusted in or out on the motor shaft accordingly.

FIGURE 8 - FAN BLADE SETTING DIMENSIONS

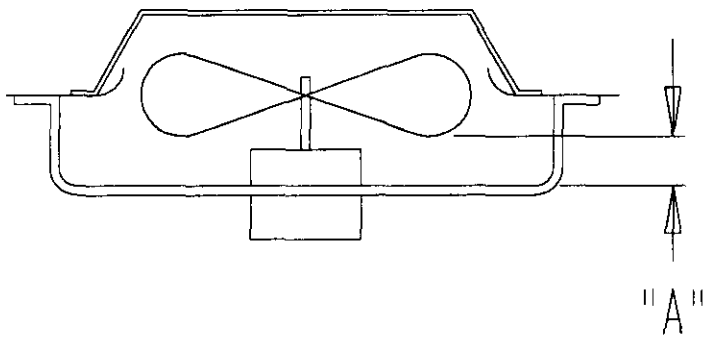


TABLE 5

Model	Dimension A
CT241	1.00

TABLE 6

### INDOOR BLOWER PERFORMANCE - CFM @ 230V

E.S.P. In H <sub>2</sub> O	Medium Speed w/o Filter		High Speed w/o Filter	
	230V		230V	
	Dry	Wet	Dry	Wet
0	1012	980	1070	1038
.1	925	893	982	950
.2	859	827	924	892
.3	794	763	855	823
.4	722	690	775	743
.5	642	610	694	662
.6	537	505	598	566

Reduce ESP by .25 for return air filter grille with filter.

TABLE 7

Model	CFM *	Rated ESP *	Recommended Airflow Range
ALL	800	.30	700 880

\* Rated CFM and ESP on medium speed tap, without filter

TABLE 8

### MAXIMUM ESP OF OPERATION ELECTRIC HEAT ONLY

Model	ESP
ALL	.60

**TABLE 9**

**COOLING**

**Air Temperature Entering Outdoor Coil Degree °F**

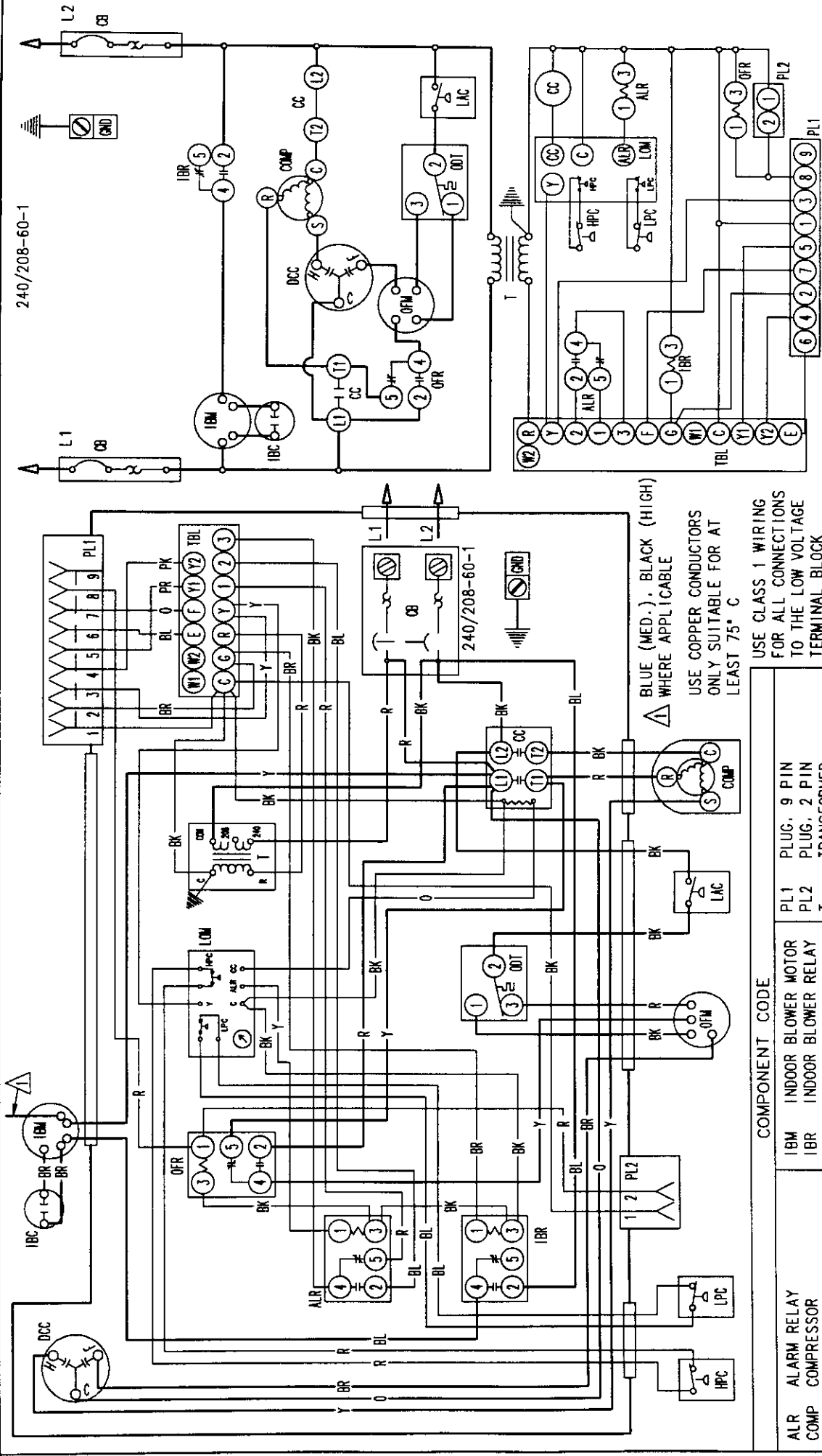
<b>Model</b>	<b>Return Air Temperature</b>	<b>Pressure</b>	<b>75</b>	<b>80</b>	<b>85</b>	<b>90</b>	<b>95</b>	<b>100</b>	<b>105</b>	<b>110</b>	<b>115</b>
<b>CT241</b>	75 deg. DB	Low Side	70	71	73	74	75	76	77	78	79
	62 deg. WB	High Side	215	230	246	262	281	300	320	342	364
	80 deg. DB	Low Side	75	76	77	78	79	80	81	82	83
	67 deg. WB	High Side	220	235	252	269	288	307	328	350	373
	85 deg. DB	Low Side	81	82	83	84	85	86	87	88	89
	72 deg. WB	High Side	229	244	261	279	298	318	340	362	386

Low side pressure ± 2 PSIG

High side pressure ± 5 PSIG

Tables are based upon rated CFM (airflow) across the evaporator coil. If there is any doubt as to correct operating charge being in the system, the charge should be removed, system evacuated, and recharged to serial plate instructions.

240/208-60-1



USE COPPER CONDUCTORS ONLY SUITABLE FOR AT LEAST 75° C

BLUE (MED.), BLACK (HIGH) WHERE APPLICABLE

USE CLASS 1 WIRING FOR ALL CONNECTIONS TO THE LOW VOLTAGE TERMINAL BLOCK

COMPONENT CODE

ALR	ALARM RELAY	IBM	INDOOR BLOWER MOTOR
COMP	COMPRESSOR	IBR	INDOOR BLOWER RELAY
CB	CIRCUIT BREAKER	LAC	LOW AMBIENT CONTROL
CC	COMPRESSOR CONTACTOR	LOM	LOCK OUT MODULE
DCC	DUAL CAN CAPACITOR	LPC	LOW PRESSURE CONTROL
GND	GROUND	LS	LIMIT SWITCH
H1	HEAT STRIP	ODT	OUTDOOR THERMOSTAT
HPC	HIGH PRESSURE CONTROL	OFM	OUTDOOR FAN MOTOR
IBC	INDOOR BLOWER CAPACITOR	OTR	OUTDOOR FAN RELAY

PL1	PLUG, 9 PIN
PL2	PLUG, 2 PIN
T	TRANSFORMER
TB	TERMINAL BLOCK
TBL	LOW VOLT. TERM. BLOCK
TCO	THERMAL CUTOFF
TDR	TIME DELAY RELAY

BK	BLACK	G	GREEN
BR	BROWN	BL	BLUE
R	RED	PR	PURPLE
O	ORANGE	GY	GRAY
Y	YELLOW	PK	PINK

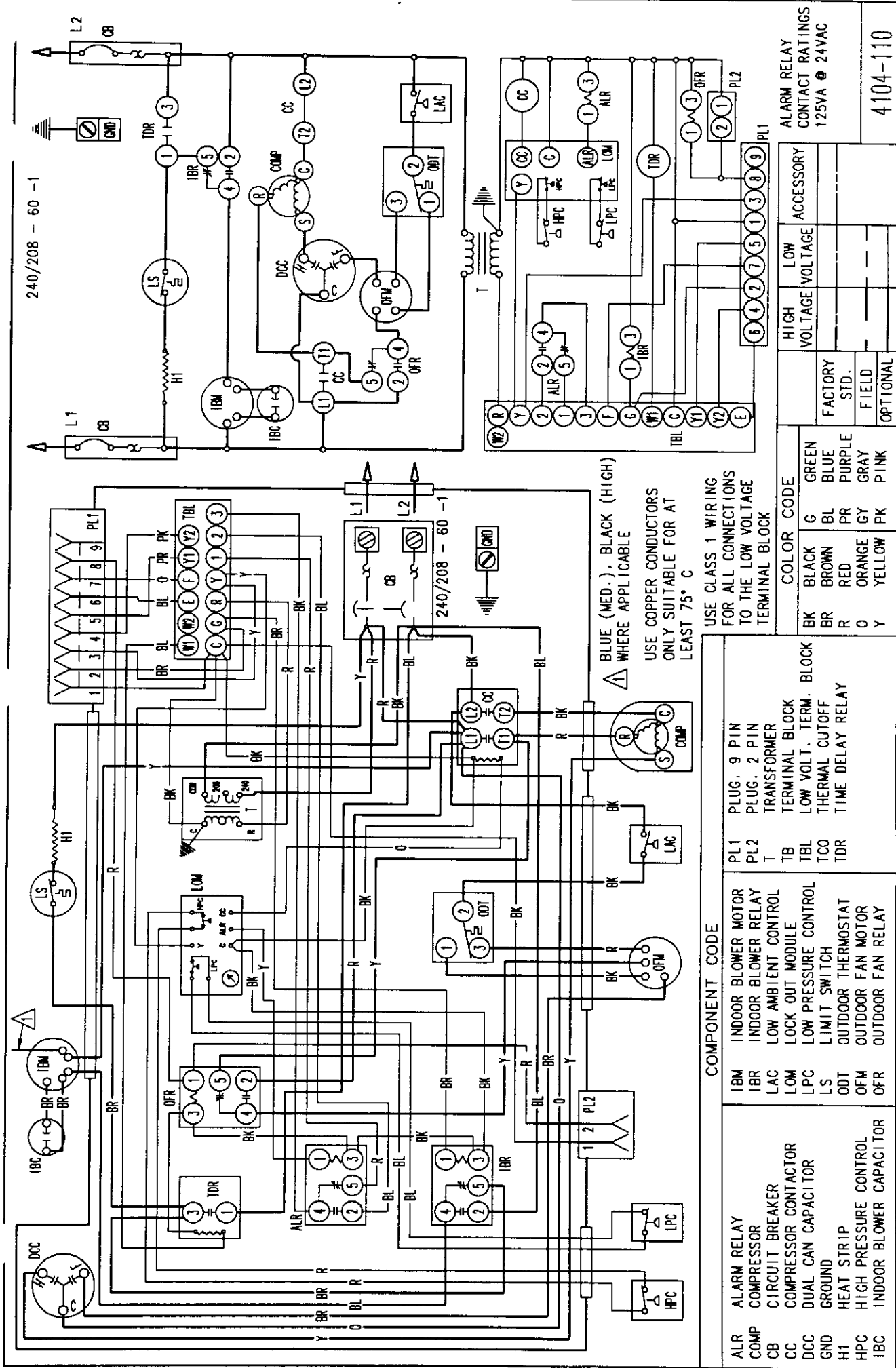
	FACTORY STD.		
	FIELD		
	OPTIONAL		

ALARM RELAY CONTACT RATINGS 125VA @ 24VAC

4104-100



240/208 - 60 -1



USE CLASS 1 WIRING FOR ALL CONNECTIONS TO THE LOW VOLTAGE TERMINAL BLOCK

BLUE (MED.), BLACK (HIGH) WHERE APPLICABLE  
USE COPPER CONDUCTORS ONLY SUITABLE FOR AT LEAST 75° C

COMPONENT CODE

ALR	ALARM RELAY	IBM	INDOOR BLOWER MOTOR
COMP	COMPRESSOR	IBR	INDOOR BLOWER RELAY
CB	CIRCUIT BREAKER	LAC	LOCK OUT MODULE
CC	COMPRESSOR CONTACTOR	LOM	LOW AMBIENT CONTROL
DCC	DUAL CAN CAPACITOR	LPC	LOW PRESSURE CONTROL
GND	GROUND	LS	LIMIT SWITCH
H1	HEAT STRIP	ODT	OUTDOOR THERMOSTAT
HPC	HIGH PRESSURE CONTROL	OFR	OUTDOOR FAN MOTOR
IBC	INDOOR BLOWER CAPACITOR		OUTDOOR FAN RELAY

PL1	PLUG, 9 PIN
PL2	PLUG, 2 PIN
T	TRANSFORMER
TB	TERMINAL BLOCK
TBL	LOW VOLT. TERM. BLOCK
TCC	THERMAL CUTOFF
TDR	TIME DELAY RELAY

COLOR CODE	
BK	BLACK
BR	BROWN
R	RED
O	ORANGE
Y	YELLOW
G	GREEN
BL	BLUE
PR	PURPLE
GY	GRAY
PK	PINK

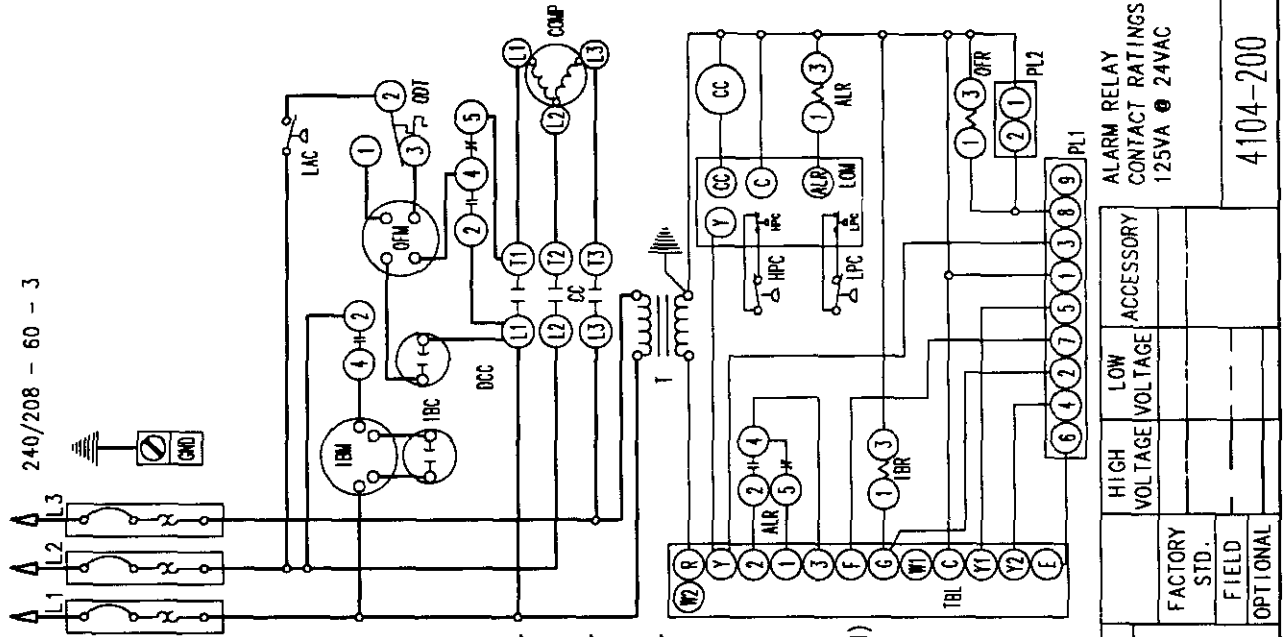
FACTORY STD.		ACCESSORY	
FIELD		OPTIONAL	

ALARM RELAY CONTACT RATINGS 125VA @ 24VAC

4104-110

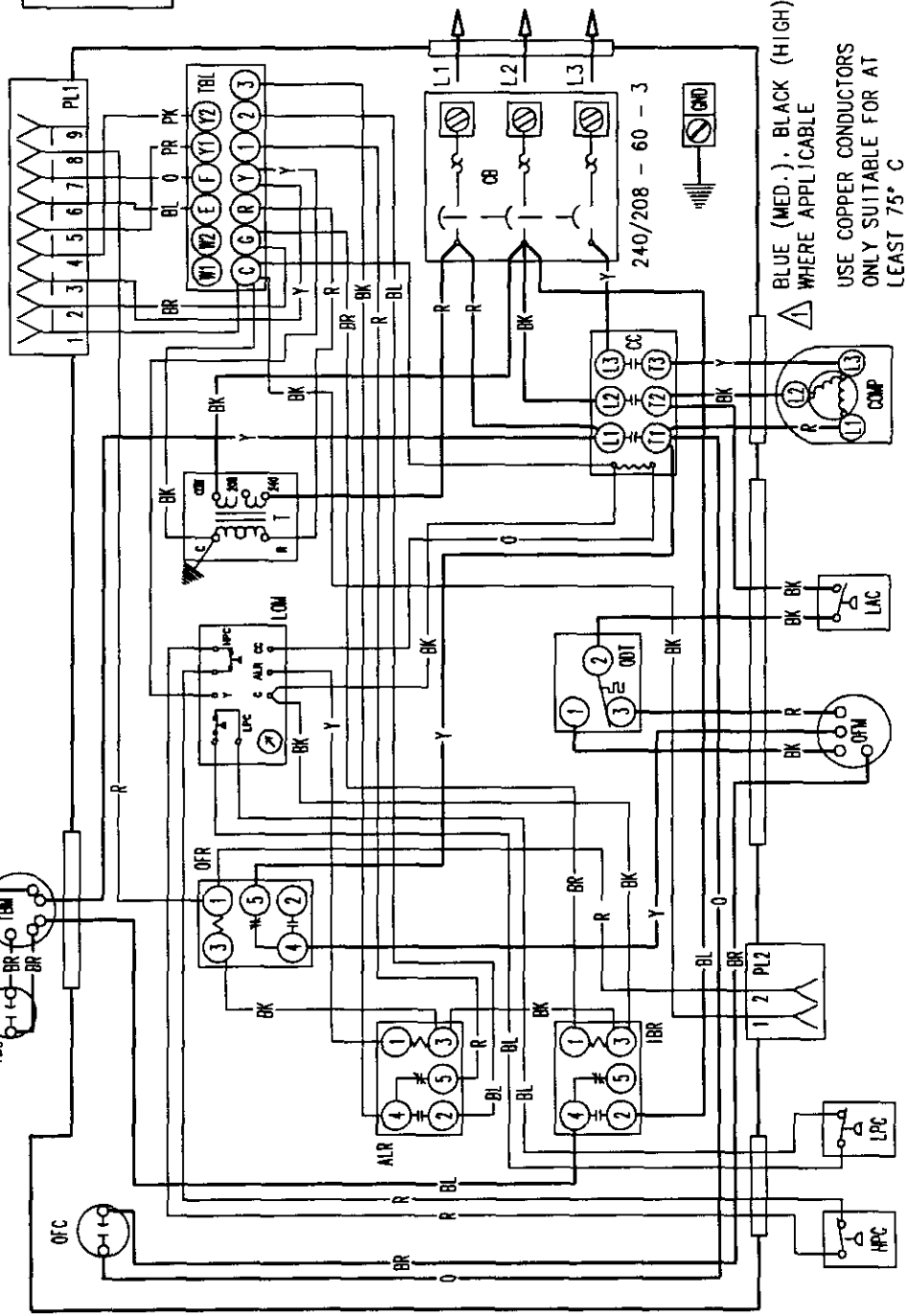


240/208 - 60 - 3



ALARM RELAY  
CONTACT RATINGS  
125VA @ 24VAC

4104-200



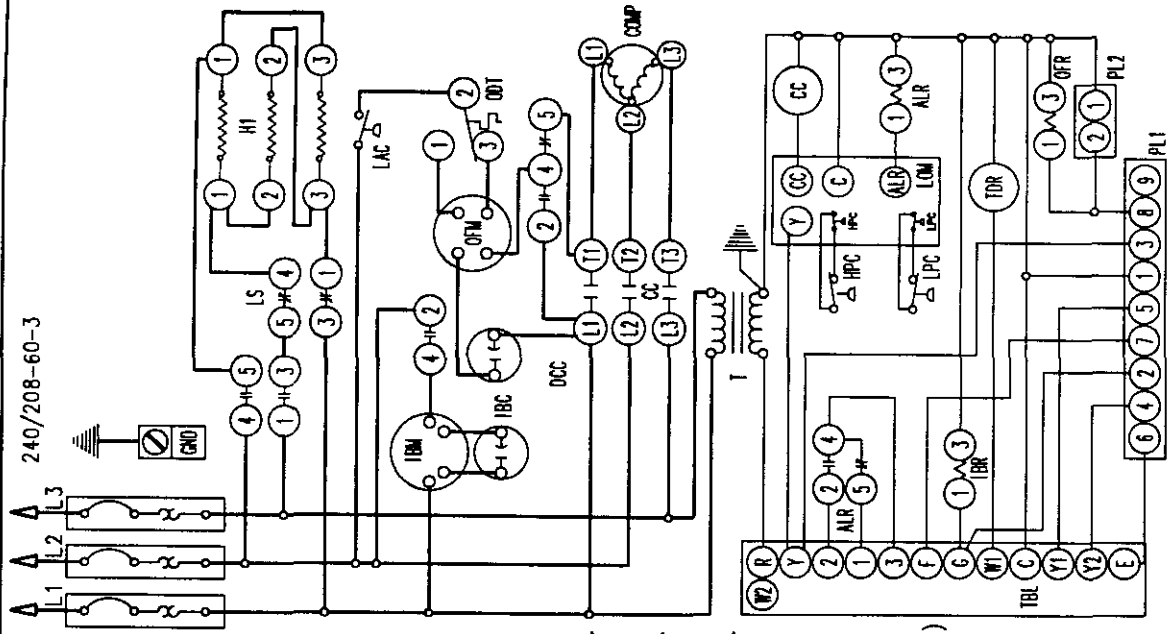
BLUE (MED.), BLACK (HIGH)  
WHERE APPLICABLE  
USE COPPER CONDUCTORS  
ONLY SUITABLE FOR AT  
LEAST 75° C  
USE CLASS 1 WIRING  
FOR ALL CONNECTIONS  
TO THE LOW VOLTAGE  
TERMINAL BLOCK

HIGH VOLTAGE VOLTAGE		LOW VOLTAGE VOLTAGE		ACCESSORY	
1	2	3	4	5	6
7	8	9	10	11	12
13	14	15	16	17	18
19	20	21	22	23	24
25	26	27	28	29	30
31	32	33	34	35	36
37	38	39	40	41	42
43	44	45	46	47	48
49	50	51	52	53	54
55	56	57	58	59	60
61	62	63	64	65	66
67	68	69	70	71	72
73	74	75	76	77	78
79	80	81	82	83	84
85	86	87	88	89	90
91	92	93	94	95	96
97	98	99	100	101	102
103	104	105	106	107	108
109	110	111	112	113	114
115	116	117	118	119	120
121	122	123	124	125	126
127	128	129	130	131	132
133	134	135	136	137	138
139	140	141	142	143	144
145	146	147	148	149	150
151	152	153	154	155	156
157	158	159	160	161	162
163	164	165	166	167	168
169	170	171	172	173	174
175	176	177	178	179	180
181	182	183	184	185	186
187	188	189	190	191	192
193	194	195	196	197	198
199	200	201	202	203	204
205	206	207	208	209	210
211	212	213	214	215	216
217	218	219	220	221	222
223	224	225	226	227	228
229	230	231	232	233	234
235	236	237	238	239	240
241	242	243	244	245	246
247	248	249	250	251	252
253	254	255	256	257	258
259	260	261	262	263	264
265	266	267	268	269	270
271	272	273	274	275	276
277	278	279	280	281	282
283	284	285	286	287	288
289	290	291	292	293	294
295	296	297	298	299	300

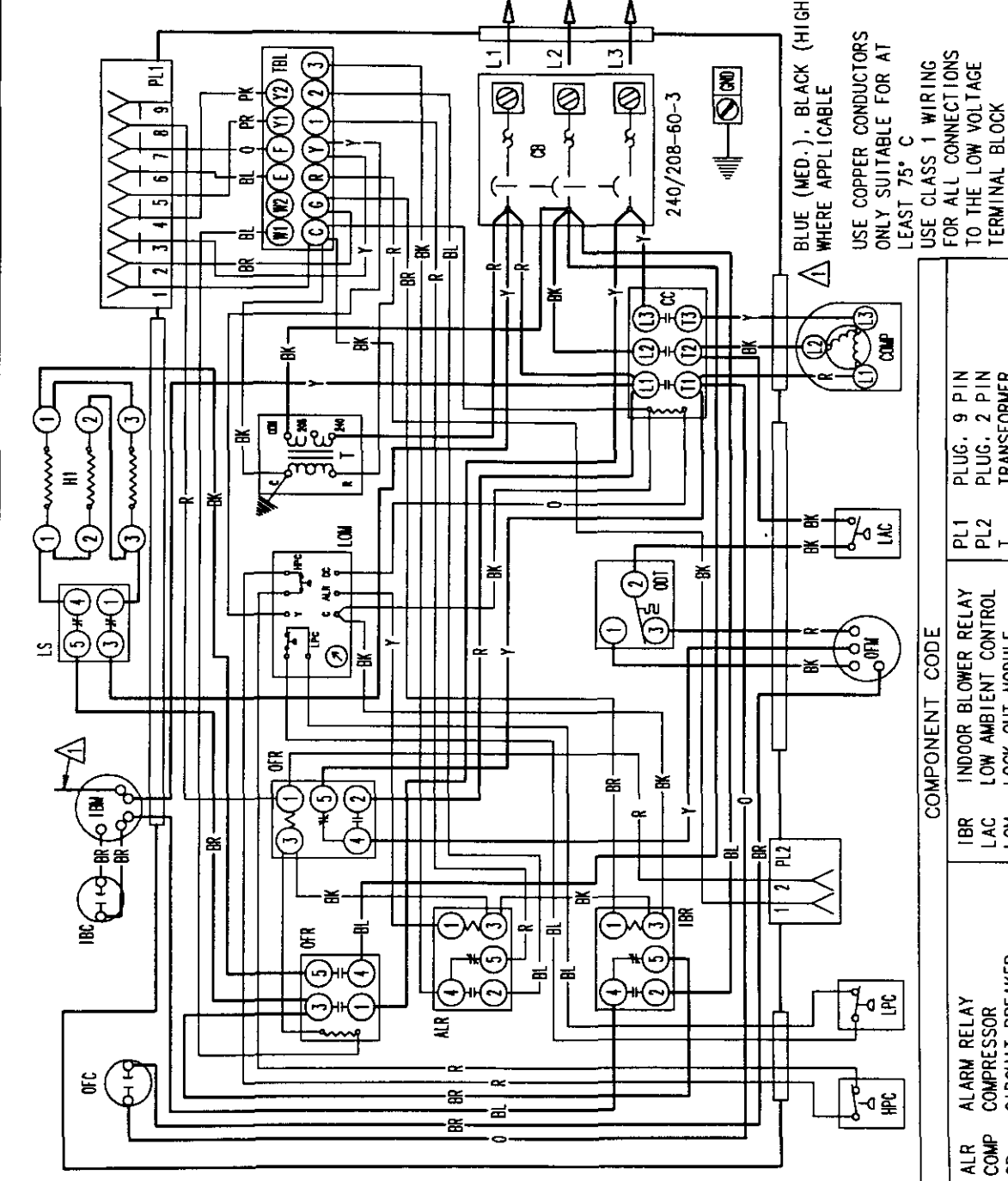
COMPONENT CODE	
ALR	ALARM RELAY
COMP	COMPRESSOR
CB	CIRCUIT BREAKER
CC	COMPRESSOR CONTACTOR
GND	GROUND
H1	HEAT STRIP
HPC	HIGH PRESSURE CONTROL
IBC	INDOOR BLOWER CAPACITOR
IBM	INDOOR BLOWER MOTOR
IBR	INDOOR BLOWER RELAY
LAC	LOW AMBIENT CONTROL
LOM	LOCK OUT MODULE
LPC	LOW PRESSURE CONTROL
LS	LIMIT SWITCH
ODT	OUTDOOR THERMOSTAT
OFC	OUTDOOR FAN CAPACITOR
OFM	OUTDOOR FAN MOTOR
OFR	OUTDOOR FAN RELAY
PL1	PLUG, 9 PIN
PL2	PLUG, 2 PIN
T	TRANSFORMER
TB	TERMINAL BLOCK
TBL	LOW VOLT. TERM. BLOCK
TCO	THERMAL CUTOFF
TDR	TIME DELAY RELAY

COLOR CODE	
BK	BLACK
BR	BROWN
R	RED
O	ORANGE
Y	YELLOW
G	GREEN
BL	BLUE
PR	PURPLE
GY	GRAY
PK	PINK

240/208-60-3



ALARM RELAY CONTACT RATINGS 125VA @ 24VAC		4104-210	
HIGH VOLTAGE	LOW VOLTAGE	ACCESSORY	
FACTORY STD.	FIELD	OPTIONAL	



BLUE (MED.), BLACK (HIGH) WHERE APPLICABLE  
USE COPPER CONDUCTORS ONLY SUITABLE FOR AT LEAST 75° C  
FOR ALL CONNECTIONS TO THE LOW VOLTAGE TERMINAL BLOCK

COLOR CODE	
BK	BLACK
BR	BROWN
R	RED
O	ORANGE
Y	YELLOW
G	GREEN
BL	BLUE
PR	PURPLE
GY	GRAY
PK	PINK

COMPONENT CODE

ALR	ALARM RELAY	PL1	PLUG, 9 PIN
COMP	COMPRESSOR	PL2	PLUG, 2 PIN
CB	CIRCUIT BREAKER	T	TRANSFORMER
CC	COMPRESSOR CONTACTOR	TB	TERMINAL BLOCK
GND	GROUND	TBL	LOW VOLT. TERM. BLOCK
H1	HEAT STRIP	TCO	THERMAL CUTOFF
HPC	HIGH PRESSURE CONTROL	TDR	TIME DELAY RELAY
IBC	INDOOR BLOWER CAPACITOR		
IBM	INDOOR BLOWER MOTOR		
IBR	INDOOR BLOWER RELAY		
LAC	LOW AMBIENT CONTROL		
LOM	LOCK OUT MODULE		
LPC	LOW PRESSURE CONTROL		
LS	LIMIT SWITCH		
ODT	OUTDOOR THERMOSTAT		
OFC	OUTDOOR FAN CAPACITOR		
OFM	OUTDOOR FAN MOTOR		
OFR	OUTDOOR FAN RELAY		