



OPERATIONS MANUAL

**TELCOM
CLIMATEWATCH
SYSTEM**

**MODEL
TCS24-***-003**

Manual: 2100-543-003
Supersedes: New

Table of Contents

1.0	INTRODUCTION	1
1.1	Shipping Damage	1
1.2	Package Contents	1
1.3	Additional Requirements	1
1.4	Copyright Notice	1
1.5	General.....	2
1.5.1	Building Points to be Monitored:.....	2
1.5.2	Wallmount Points to be Monitored for THE Unit:	2
1.5.3	Building Points to be Controlled:	2
1.5.4	Wallmount Points to be Controlled:	3
1.5.5	Alarm Points:	3
1.6	Model Nomenclature.....	5
2.0	SPECIFICATIONS.....	5
2.1	Electrical Specifications.....	5
2.2	Mechanical Specifications	5
2.3	Environmental Specifications	5
2.4	Sensor Specifications	6
2.4.1	Temperature Sensors.....	6
2.4.2	Humidity Sensors.....	6
2.4.3	Compressor Current Sensor	7
2.4.4	Dirty Filter Sensor.....	7
2.4.5	Blower Airflow Switch.....	7
3.0	INSTALLATION.....	11
3.1	Mounting.....	11
3.2	Wiring	11
3.2.1	High Voltage Wiring.....	11
3.2.2	Wiring - Low Voltage.....	12
3.2.3	Wiring - Sensors	12
3.2.4	Wiring – Inputs & Outputs.....	13
3.2.5	Wiring - Telephone Line.....	14
3.2.6	Wiring - Ethernet	14

3.3	Installation Check List	18
3.4	System Startup	19
3.4.1	Wallmount Startup Checklist.....	19
3.4.2	TCS24 Startup Checklist	20
4.0	OPERATION.....	21
4.1	General.....	21
4.2	Sequence of Operation.....	21
4.2.1	Cooling Sequence with Economizers	21
4.2.2	Heating Sequence.....	21
4.2.3	Fan Sequence	21
4.2.4	Occupied / Unoccupied Mode Sequence	22
4.2.5	Alarm Sequence	22
4.2.6	Dehumidification sequence.....	24
4.2.7	Thermal Shock Protection Sequence	24
4.2.8	Power Management Sequence	24
4.2.9	Setpoints.....	24
5.0	TOUCH SCREEN DISPLAY OPERATION (DAK).....	25
5.1	Display & Keypad Physicals	25
5.2	Power Up.....	25
5.3	Menu Tree.....	26
5.3.1	Buildings Status Screen.....	27
5.3.2	Unit #1 Status Screen	29
5.3.3	Log Out.....	30
5.3.4	Overrides Unit #1 Screen	30
5.3.5	More	32
5.3.6	Alarms Screen	32
5.3.7	Setpoints Screen	36
5.3.8	Active Setpoint And Stages.....	39
5.3.9	Sensor Offsets Screen.....	40
5.3.10	Misc. Screen	41
5.3.11	Notes Screen.....	42
5.3.12	Dialout Screen	42
5.3.13	IP Setup Screen.....	44
5.3.14	Alarm Log	45
5.3.15	Password Operation	45

6.0	PC SOFTWARE OPERATION	46
6.1	ClimateWatch System Software Overview.....	46
6.2	Installation.....	46
6.2.1	Hardware Requirements.....	46
6.2.2	Software Installation	47
6.3	ASI Expert / Bard ClimateWatch Software	47
6.3.1	Screen Overview	47
6.3.2	TCS communications.....	49
	Serial Port	57
6.4	TCS Controller Information Screens.....	63
6.4.1	Main Screen Tab	64
6.4.2	Set Point Tab.....	66
6.4.3	Override #1 Tab	71
6.4.4	Alarms Tab.....	74
6.4.5	Alarm Log Tab.....	78
6.4.6	Offsets Tab.....	79
6.4.7	Misc. Tab	80
6.4.8	Trend Tab.....	83
6.4.9	Dial Out Tab	84
6.4.10	IP Tab.....	86
6.4.11	Notes Tab.....	87
7.	MAINTENANCE & TROUBLESHOOTING	88
7.1	Routine Maintenance.....	88
7.2	Troubleshooting	88
7.2.1	TCS24 Troubleshooting.....	88
7.2.2	Wall mount quick troubleshooting Guide.....	93

Table of Figures and Tables

Figure 1	Front Cover.....	8
Figure 2	Control Location.....	9
Figure 3	Mounting Template.....	10
Table 1	Low Voltage Wire Size.....	12
Figure 4	External Wiring.....	15
Figure 5	Internal Wiring.....	16
Figure 6	Power Backup System.....	17
Table 2	Enthalpy Lookup Table.....	38
Table 3	Humidity Sensor Output.....	91
Table 4	Thermistor Resistance Vs. Temperature Table.....	92

1.0 INTRODUCTION

1.1 Shipping Damage

Upon receipt of equipment, the carton should be checked for external signs of shipping damage. If damage is found, the receiving party must contact the carrier immediately, preferably in writing, requesting inspection by the carrier's agent.

1.2 Package Contents

- 1 - TCS24
- 1 - Outdoor Humidity Sensor
- 1 - Outdoor Temperature Sensor
- 1 - TCS24 Operations Manual
- 1 - TCS24 Software Package

1.3 Additional Requirements

This controller is suitable for use with 1½ ton through 6 ton Bard Wall Mount® air conditioners. The Bard Wall Mount® must be equipped with the “V” control module for proper operation of the TCS24. Air conditioner model numbers used with the TCS24 should contain the letter “V” in the 15th position of the model number.

The TCS24 can be used with or without economizers. If economizers are to be used, the units should be ordered with the “D” vent option. The air conditioner with economizer used with the TCS24 should contain the letter “D” in the 10th position of the model number.

Additionally, to utilize the Power Failure Management portion of the controller, an inverter and battery backup system should be installed in the shelter. This provides for ventilation of the structure in case of utility power failure, alarming of the power failure condition, and acts as an uninterruptible power supply for the TCS24. See Figure 6.

If the inverter and battery backup system is not used, disregard the power failure management sequence later in this manual.

The power transfer relays shown in Figure 3 are field supplied items and are needed if ventilation of the structure is required during power outages. The field supplied power transfer relays should be sized to handle the MCA of the unit being controlled. Single phase units will require a 4 pole contactor with 2 normally open and 2 normally closed contacts. Three phase units will require either a six pole contactor or two 3 pole relays with 3 normally closed and three normally open contacts. Square D, D-Line or F-Line contactors or equivalent are recommended.

If ventilation of the structure is not required during power outages, these may be omitted. The TCS24 will still dial out and alarm the power failure condition although no ventilation will be provided.

1.4 Copyright Notice

All materials contained in this manual originated from and are the property of Bard Manufacturing Company, Inc. Any reproduction of the text, drawings, or wiring diagrams contained in this manual is forbidden without the written consent of Bard Manufacturing Company, Inc.

All SOFTWARE supplied with this product is the property of Bard Manufacturing Company, Inc. You may not modify, disassemble, de-compile, reverse engineer, or create derivative works from this SOFTWARE. Bard Manufacturing Company, Inc. licenses the purchaser of this product to use two copies of this SOFTWARE on two computer systems, one remote computer system and one on-site computer system.

If installed on a network server, additional software licenses should be purchased for each computer on the network using the SOFTWARE.

1.5 General

The Telcom Climate Watch System (TCS) is a building monitoring and control system used in conjunction with one (1) Bard Wall-Mount ® air conditioner. The system consists of a state of the art direct digital controller, the TCS24, one (1) Bard Wall-Mount ® air conditioners, and a special “V” control module that is added to the Bard Wall-Mount ® air conditioners. This system provides the following features.

1.5.1 BUILDING POINTS TO BE MONITORED:

- Space Temperature
- Space Humidity
- Outdoor Temperature
- Outdoor Humidity
- Occupancy Override Switch
- Main Power to Building
- Fire Alarm Circuit
- Fire Trouble Circuit
- Door Alarm Circuit

1.5.2 WALLMOUNT POINTS TO BE MONITORED FOR THE UNIT:

- Blower Airflow
- Discharge Air Temperature
- Valid Compressor Current Sensor
- Compressor Lockout Relay
- Dirty Filter Sensor

1.5.3 BUILDING POINTS TO BE CONTROLLED:

- Power Transfer Relay
- Shelter Alarm Circuit
- Door Alarm

1.5.4 WALLMOUNT POINTS TO BE CONTROLLED:

Blower Unit #1
Economizer Unit #1
Compressor Unit #1
Heating Unit #1

1.5.5 ALARM POINTS:

High Space Temperature
Low Space Temperature
High Space Humidity
Low Space Humidity
Blower Failure Unit #1
Compressor Lockout Unit #1
Compressor Current Failure Unit #1
Dirty Filter Unit #1
Main Power Failure
Fire Alarm
Fire Trouble
Door Alarm

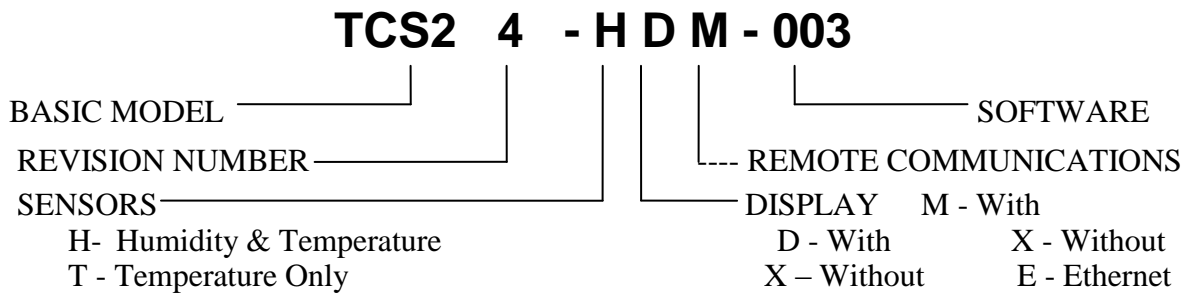
INPUTS

1 Indoor Temperature Sensor	Required	(Standard in TCS24)
2 Indoor Humidity Sensor	Optional	(Optional in TCS24)
3 -0 Unit #1 Blower Airflow Sensor	Required	(Standard in "V" Module)
-1 Unit #1 Compressor Lockout Relay	Required	(Standard in "V" Module)
-2 Unit #1 Dirty Filter Sensor	Optional	(Standard in "V" Module)
4 Unit #1 Discharge Air Sensor	Optional	(Standard in "V" Module)
5 Spare		
6 Spare		
7 Unit #1 Compressor Current Switch	Required	(Standard in "V" Module)
8 Spare		
9 Fire Trouble	Optional	
0 Fire Alarm	Optional	
11 Spare		
12 Door Alarm	Optional	
13 Main Power Sensor	Optional	
14 Occupied Override Switch	Required	(Standard in TCS24)
15 Outdoor Temperature Sensor	Required	(Standard in TCS24)
16 Outdoor Humidity Sensor	Required	(Standard in TCS24)

OUTPUTS

1 Spare
2 Cycle Power To Modem
3 Power Transfer Switch
4 Unit #1 Economizer (Y1)
5 Unit #1 Compressor (Y2)
6 Unit #1 Heater (W1)
7 Unit #1 Blower (G)
8 Spare
9 Spare
10 Spare
11 Spare
12 Shelter Alarm Circuit
13 Unit #1 is Lead Unit
14 Spare
15 Free Cooling
16 Power Failure

1.6 Model Nomenclature



2.0 SPECIFICATIONS

2.1 Electrical Specifications

Supply Voltage 208/240 VAC +/- 10% 50/60 HZ
 Minimum Circuit Ampacity 3 Amp
 Overcurrent Protection Internal Circuit Breaker - 3 Amp

Controller Analog Inputs 16
 Resolution 8 bits/ 0.4% Full Scale
 Voltage Range 0 Vdc to +10 Vdc
 Current Rating 5.0 mA at +10 Vdc

Binary Relay Outputs 12
 Type Form "A" Relay SPST N.O.
 Contact Rating 24 VAC, 5 A Resistive
 24 VAC, 2 A Inductive

2.2 Mechanical Specifications

Height 26.25 in., (667 mm.)
 Width 17.00 in., (432 mm.)
 Depth 5.50 in., (140 mm.)
 Material 18 ga galvanized steel with Beige baked polyester enamel.
 Mounting Vertical
 Mounting Area Required 27 in. high by 18 in. wide, (686 mm. high by 457 mm. wide)
 Weight 27 lb., (12.3 kilograms)

2.3 Environmental Specifications

Operating Temperature Range 32 to 130°F (0 to 55°C)
 Operating Humidity Range 10 to 95%, non condensing
 Storage Temperature Range -35 to 180°F (-37 to 82°C)
 Storage Humidity Range 5 to 95%, non condensing

2.4 Sensor Specifications

2.4.1 TEMPERATURE SENSORS

Indoor and Outdoor

Type	Thermistor
Ohms	3000 Ω at 77°F (25°C)
Temperature Range	-40 to 302°F (-40 to 150°C)
Interchangeability	.2 Deg Celsius

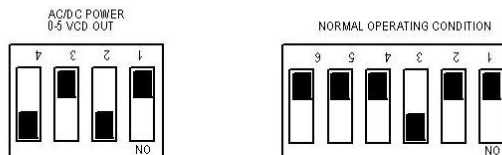
Discharge

Type	Thermistor
Ohms	10000 Ω at 77°F (25°C)
Temperature Range	-40 to 302°F (-40 to 150°C)
Interchangeability	.2 Deg Celsius

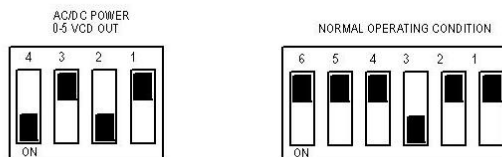
2.4.2 HUMIDITY SENSORS

Type	Bulk Polymer
Output	0-5 Vdc
Supply Voltage	24 Vac, +/- 15%
Accuracy	+/- 5%
Sensitivity	0.1% RH
Repeatability	0.5% RH
Long Term Stability	Less than 1% per year
Interchangeability	+/- 3%
Temperature Range	-40 to 130°F (-40 to 76°C)
Humidity Range	0 to 99%, non condensing

INDOOR HUMIDITY SENSOR
SETTINGS



OUTDOOR HUMIDITY SENSOR
SETTINGS



MIS-2347

2.4.3 COMPRESSOR CURRENT SENSOR

Type	Solid State DC Switch
Output	Form "A" solid state DC switch
Supply Voltage	Self Powered
Trip Current Range	3 to 200 Amps
Maximum Load	.30 A @ 200 VAC/VDC
Temperature Range	-58 to 149°F (-50 to 65°C)
Dimensions	2.70 in. high, 3.33 in. wide, 1.08 in. deep (69 mm. high, 84 mm. wide, 28 mm. deep)

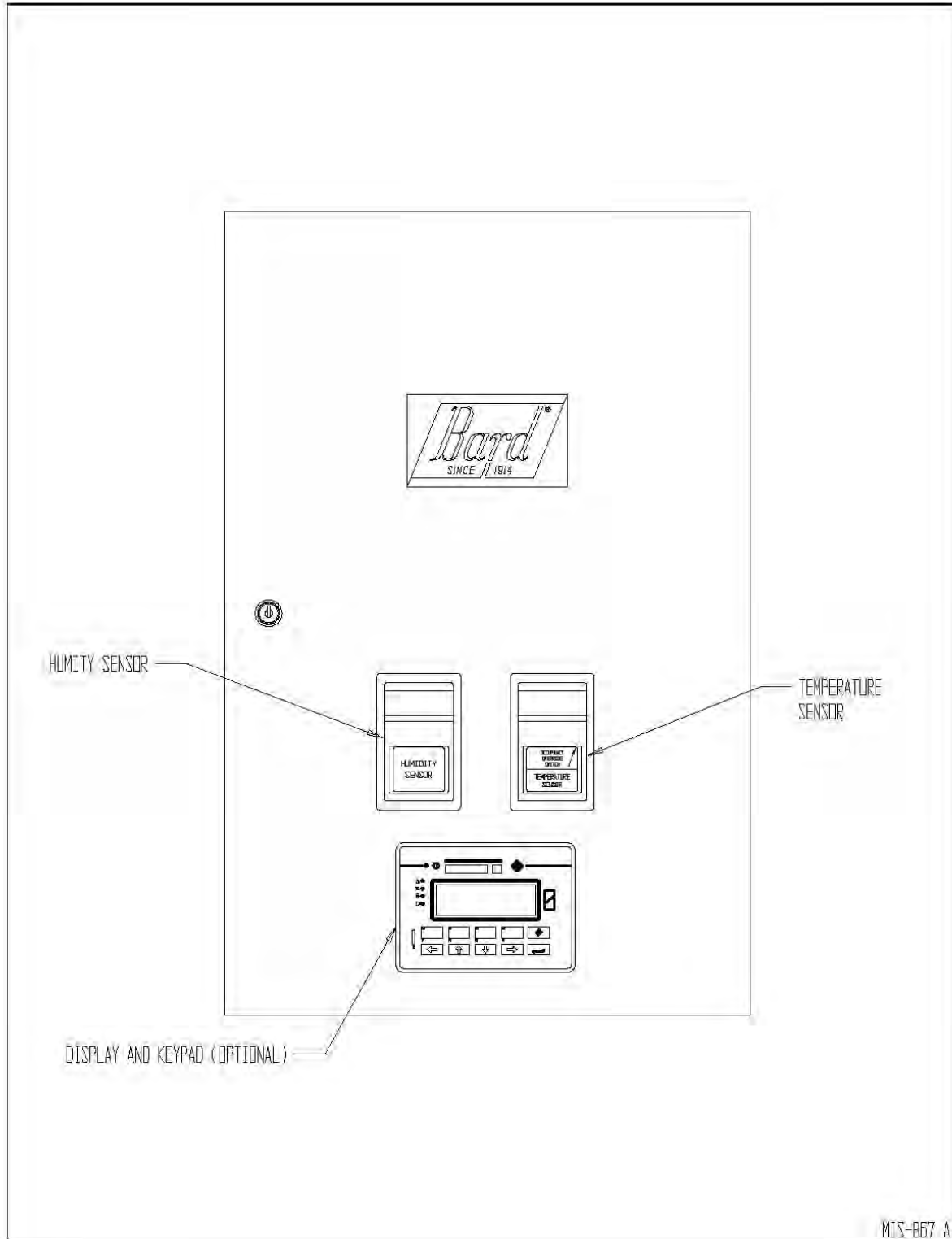
2.4.4 DIRTY FILTER SENSOR

Type	Mechanical Pressure Switch
Output	Form "A" Contact
Supply Voltage	Self Powered
Maximum Load	1.5A, at 24 VAC
Temperature Range	0 to 170°F (-18 to 77°C)
Pressure Range	0.1 to 0.7 in. wc.
Dimensions	3 1/4 in. high, 2 1/4 in. wide, 2 in. deep (83 mm. high, 57 mm. wide, 51 mm. deep)

2.4.5 BLOWER AIRFLOW SWITCH

Type	Mechanical Airflow Switch
Output	Form "C" Contact
Supply Voltage	Self Powered
Maximum Load	300 VA, at 24 VAC
Temperature Range	-40 to 180°F (-40 to 82°C)
Pressure Range	0.07 to 0.12 in. wc
Dimensions	6.125 high, 4.125 wide, 3.188 deep (156 mm. high, 105 mm. wide, 81 mm. deep)

Figure 1 Front Cover



MIS-B67 A

Figure 2 Control Location

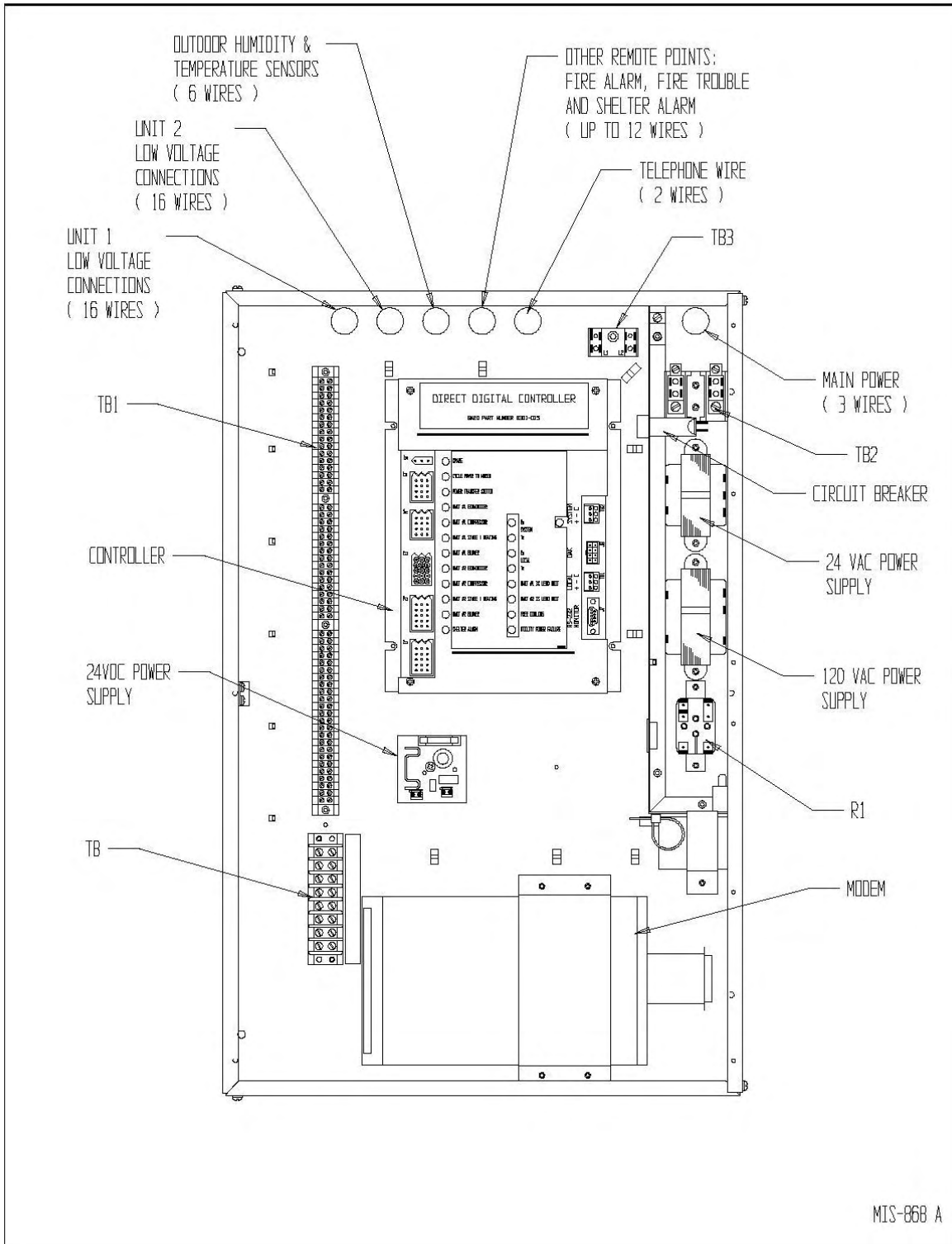
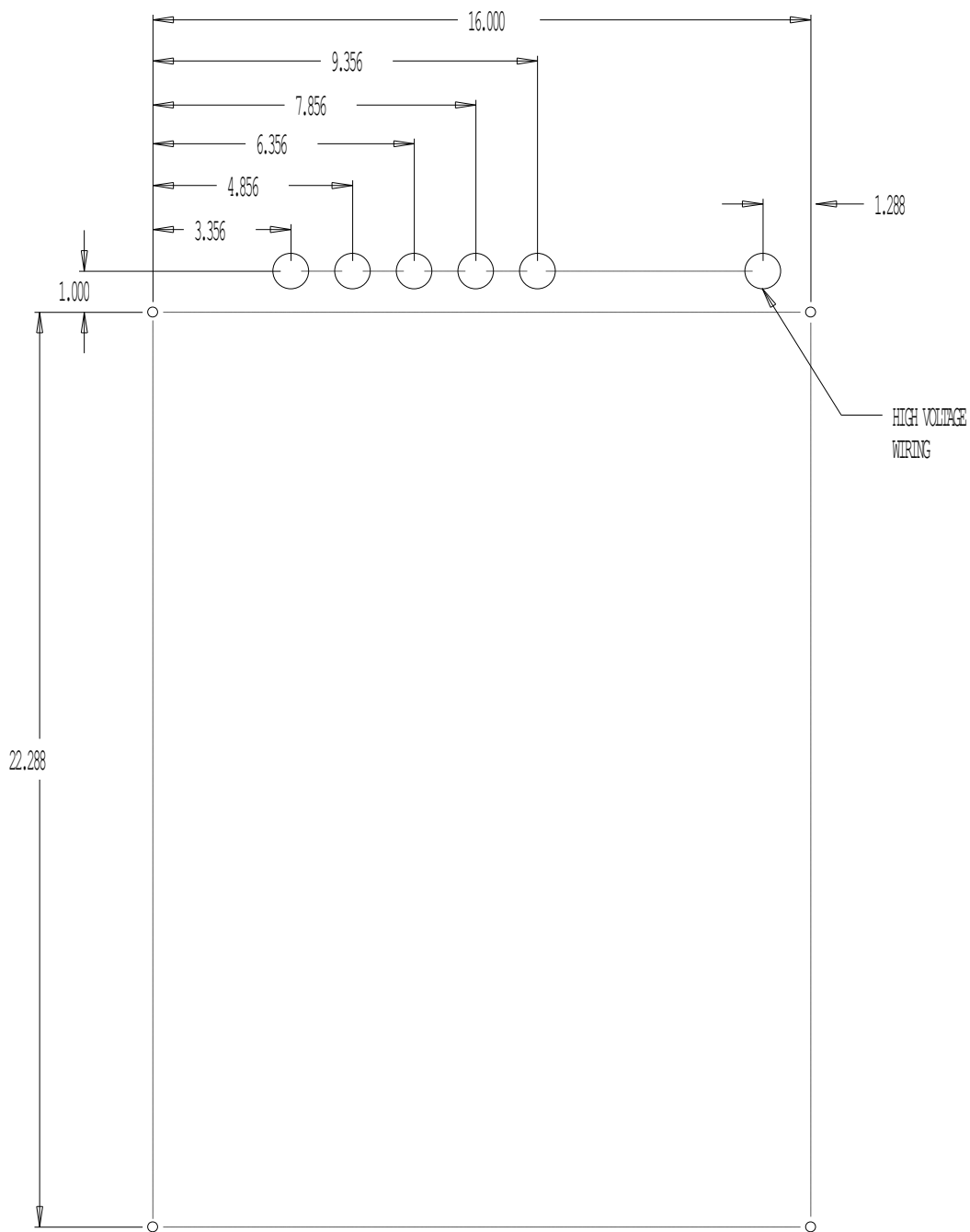


Figure 3 Mounting Template



MIS-866

3.0 INSTALLATION


This section discusses mounting and wiring of the TCS24 into the building. Also included is an installation checklist to be completed by the installing contractor. See installation instructions supplied with the Bard Wall Mount air conditioners for information on installing the air conditioners.

This controller should be installed and serviced by a qualified service technician only.

3.1 Mounting

TCS24 should be mounted on a flat vertical surface four (4) to six (6) feet from the floor of the building. When choosing a suitable location, take into consideration that the electrical connections can be made from the back or top of the TCS24. See Figure 3 for rear electrical entrance locations.

The TCS24 is secured to the wall with four (4) - 1/4 inch fasteners with flat washers. Hollow wall anchors or lag bolts are suitable as dictated by the wall construction. See Figure 3 for a bolt pattern layout drawing.



WARNING

- HAZARD OF ELECTRIC SHOCK.
- ELECTRIC SHOCK CAN RESULT IN SERIOUS INJURY OR DEATH.
- DISCONNECT THE REMOTE ELECTRIC POWER SUPPLIES BEFORE SERVICING.

3.2 Wiring

Electrical connections can be made from the back or top of the TCS24. All wiring should exit the TCS24 in conduit. Use the supplied wire ties and cable holders to route unit low voltage, communication, and sensor wiring neatly. Avoid looping excess wire. See Figure 2 for suggested conduit connections.

Never connect or disconnect wiring from the controller with power connected to the controller or to either of the Bard Wall Mount® air conditioners.

3.2.1 HIGH VOLTAGE WIRING

IMPORTANT: High voltage wiring must not be run in the same conduit as low voltage control or sensor wiring. Failure to comply with this requirement will result in poor or no remote communication and/or an inaccurate sensor reading.

Supply power is 208/240 VAC, 50/60 Hz, 1-Phase at 3 amps minimum circuit ampacity. A 3 amp circuit breaker is supplied as part of the TCS24. This circuit breaker is for internal circuit protection only and cannot be used as a disconnect. Supply wire size should be 18 ga. or larger. Use Copper Conductors Only. All wiring must comply with the applicable sections of the National Electrical Code (NEC) and any applicable local codes.

The TCS24 is shipped for 240 VAC operation. For 208 volt operation change both transformer primaries in the TCS24 to the 208 volt tap. See Wiring Diagram. The acceptable operating voltage ranges for the 240 and 208 volt taps are:

Tap	Range
240	253-216
208	220-187

Connect the high voltage power supply to Terminal Block TB2. Connect ground wire to the ground connector provided. *TCS24 must be grounded for proper operation. Failure to ground the controller may cause erratic controller operation and inaccurate sensor operation.* See Figure 2 and the wiring diagram.

3.2.2 WIRING - LOW VOLTAGE

IMPORTANT: High voltage wiring must not be run in the same conduit as low voltage control or sensor wiring. Failure to comply with this requirement will result in poor or no remote communication and/or an inaccurate sensor reading.

Sixteen (16) wires should be run from each Bard Wall Mount® to the low voltage terminal block in the TCS24. An eight pair shielded cable with 20 gauge copper conductors, such as National Wire & Cable Corporation NQP series cable or equivalent, is recommended for distances up to 45 feet. See Table 1 for distances more than 45 feet. The connection points are shown in Figure 5.

Table 1 Low Voltage Wire Size

Wire Gauge	Maximum Distance in Feet (meter)
20 gauge, 0.50 mm ²	45 (14)
18 gauge, 0.75 mm ²	60 (18)
17 gauge, 1.00 mm ²	75 (23)
16 gauge, 1.50 mm ²	100 (30)
14 gauge, 2.50 mm ²	160 (49)
12 gauge, 4.00 mm ²	250 (76)

3.2.3 WIRING - SENSORS

IMPORTANT: High voltage wiring must not be run in the same conduit as low voltage control or sensor wiring. Failure to comply with this requirement will result in poor or no remote communication and/or an inaccurate sensor reading.

3.2.3.1 Outdoor Temperature Sensor (OTS)

The Outdoor Temperature Sensor (OTS) is supplied as part of the TCS24 package. The Outdoor Temperature Sensor (OTS) is a thermistor type device. The sensor is mounted in a weatherproof junction box suitable for connection to conduit. This sensor is a two (2) wire device.

The Outdoor Temperature Sensor (OTS) should be mounted on the exterior of the structure at a height above any expected accumulation of snow. It is recommended that the box be mounted

securely to the outside wall of the structure and all wiring to the sensor be made through conduit. A one (1) pair shielded cable with 20 gauge copper conductors, such as National Wire & Cable Corporation NQP series cable or equivalent, is recommended for connection to the sensor for distances up to 45 feet. See Table 1 for distances more than 45 feet.

Use wire nuts to connect the cable to the blue and yellow sensor leads in the sensor housing. Polarity is not critical with this sensor. The connection points for the sensor inside the TCS24 are shown in Figure 4.

3.2.3.2 Outdoor Humidity Sensor (OHS)

The Outdoor Humidity Sensor (OHS) is supplied as part of the TCS24 package. The Outdoor Humidity Sensor (OHS) is a bulk polymer type device. The sensor is mounted in a weatherproof junction box suitable for connection to conduit. This sensor is a four (4) wire device, 1 to 5 Vdc output.

The Outdoor Humidity Sensor (OHS) should be mounted on the exterior of the structure at a height above any expected accumulation of snow. It is recommended that the box be mounted securely to the outside wall of the structure and all wiring to the sensor be made through conduit. A two (2) pair shielded cable with 20 gauge copper conductors, such as National Wire & Cable Corporation NQP series cable or equivalent, is recommended for connection to the sensor for distances up to 45 feet. See Table 1 for distances more than 45 feet.

Connect the cable to the terminal blocks in the sensor housing. Polarity is critical with this sensor. The connection points for the sensor inside the TCS24 are shown in Figure 4.

3.2.3.3 Zone Temperature Sensor (ZTS)

The Zone Temperature Sensor (ZTS) is supplied as part of the TCS24 package. The Zone Temperature Sensor (ZTS) is a thermistor type device. The sensor is premounted to the front door of the TCS24. No wiring is required.

3.2.3.4 Zone Humidity Sensor (ZHS) (Optional)

The Zone Humidity Sensor (ZHS) is supplied as part of the TCS24 package (Optional). The Zone Humidity Sensor (ZHS) is a bulk polymer type device. If so equipped, the sensor is premounted to the front door of the TCS24. No wiring is required.

3.2.4 WIRING – INPUTS & OUTPUTS

A shielded cable with 20 gauge copper conductors, such as National Wire & Cable Corporation NQP series cable or equivalent, is recommended for connection to the inputs and outputs of the TCS24 for distances up to 45 feet. See Table 1 for distances more than 45 feet.

3.2.4.1 Shelter Alarm Output (SA)

The Shelter Alarm Output (SA) is a normally open set of contacts that closes whenever an alarm condition exists as sensed by the TCS24 controller. See the alarm section of this manual for an explanation of the various conditions that will send a shelter alarm.

The Form “A” contacts are SPST N.O. rated at 24 VAC, 5 A Resistive, or 24 VAC, 2 A Inductive. These rating should not be exceeded under any conditions.

These contacts may be used to trigger an alarm in the shelter or a remote alarm.

3.2.4.2 Power Transfer Switch Output (PTS)

The Power Transfer Switch Output is a normally open set of contacts that closes two (2) minutes after a power failure is sensed by the TCS24 controller. See the alarm section of this manual for an explanation of the power failure alarm.

The Form “A” contacts are SPST N.O. rated at 24 VAC, 5 A Resistive, or 24 VAC, 2 A Inductive. These rating should not be exceeded under any conditions.

These contacts can be used to energize a power transfer switch when used in conjunction with an inverter to provide emergency ventilation of the shelter during power failures. Consult the power failure management sequence, section

4.2.10 and section 1.3, for more details.

3.2.4.3 Power Failure Sense Input (PS)

The Power Failure Sense is an input into the Controller. A normally open set of contacts is connected across these inputs. When power is lost to the shelter, these contacts should close indicating that the building has lost normal utility power. These contacts can be used in conjunction with an inverter and power transfer switch to provide emergency ventilation of the shelter during power failures. Consult the power failure management sequence, section 4.2.10 and section 1.3, of this manual for more details.

This is a dry contact input only. Do not connect any voltage source to these terminals. Do not connect utility power to these terminals.

3.2.4.4 Fire Alarm Input (FA)

The Fire Alarm is an input into the Controller. A set of normally open contacts is connected across these inputs. These contacts should close when fire alarm system has sensed a fire.

This is a dry contact input only. Do not connect any voltage source to these terminals. Do not connect utility power to these terminals.

3.2.4.5 Fire Trouble Input (FT)

The Fire Trouble is an input into the Controller. A set of normally open contacts is connected across these inputs. These contacts should close when the fire alarm system senses a problem with the fire alarm system. This is a dry contact input only. Do not connect any voltage source to these terminals. Do not connect utility power to these terminals.

3.2.4.6 Door Alarm Input (DA)

The Door Alarm is an input into the Controller. A set of normally open contacts is connected across these inputs. These contacts should close when door is closed. **If a door switch is not used, a jumper should be placed across this input.**

This is a dry contact input only. Do not connect any voltage source to these terminals. Do not connect utility power to these terminals.

3.2.5 WIRING - TELEPHONE LINE

When the TCS24 is equipped with a modem, an analog phone line should be connected to the back of the modem in the jack labeled LINE. This jack accepts a standard a RJ-11 six (6) position modular phone plug.

3.2.6 WIRING - ETHERNET

When the TCS24 is equipped with an Etherlink communications module, the LAN/WAN should be connected to the back of the module in the jack labeled Ethernet. This jack accepts a standard a RJ-11 eight (8) position modular phone plug.

The Etherlink communications module requires a dedicated IP address. This must be programmed by the end user via a computer and RS232 cable at the time of connection to the network. The cable is provided with the TCS24.

Specific configuration information is provided with the EtherLink Module in a separate document.

Figure 4 External Wiring

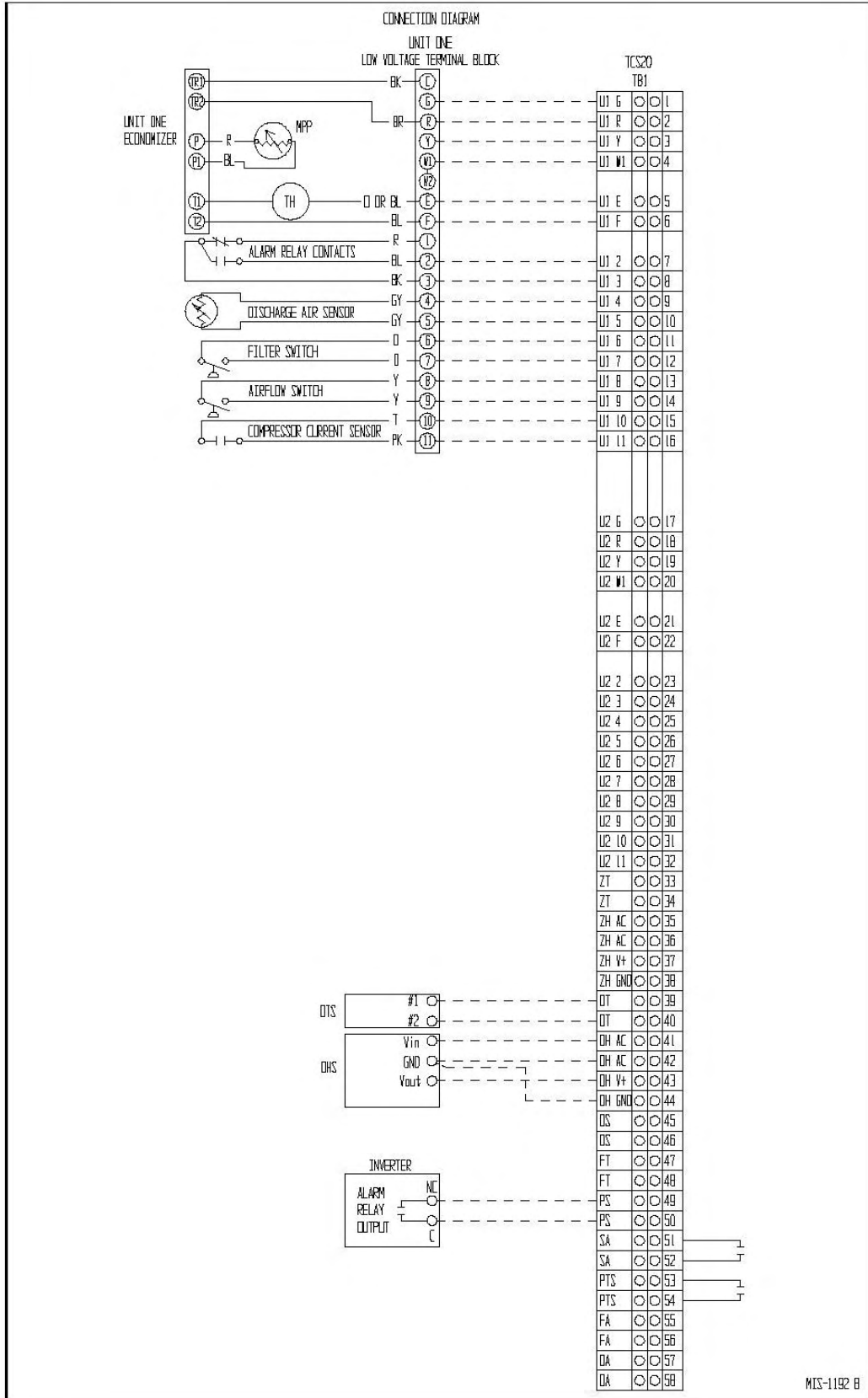


Figure 5 Internal Wiring

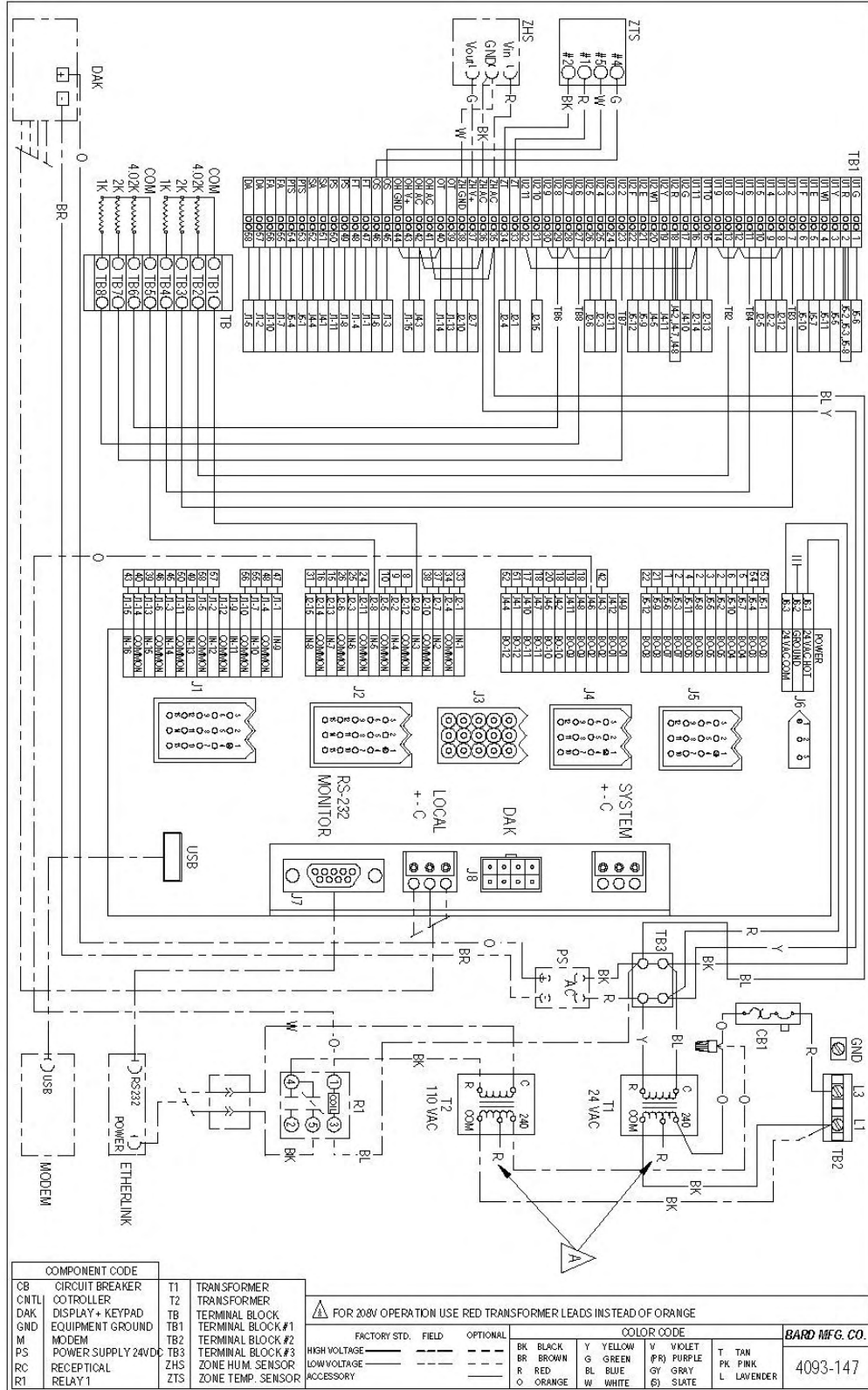
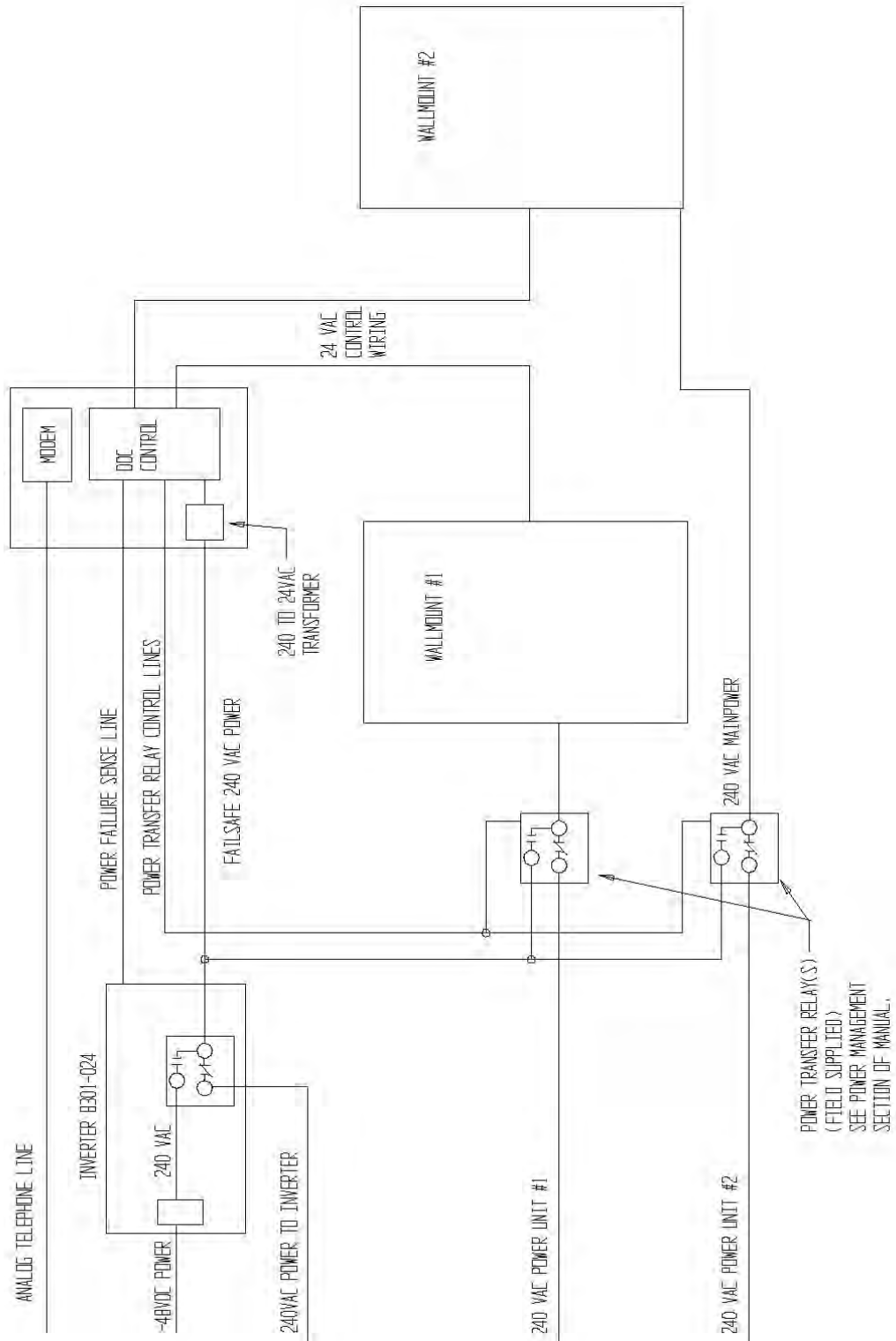


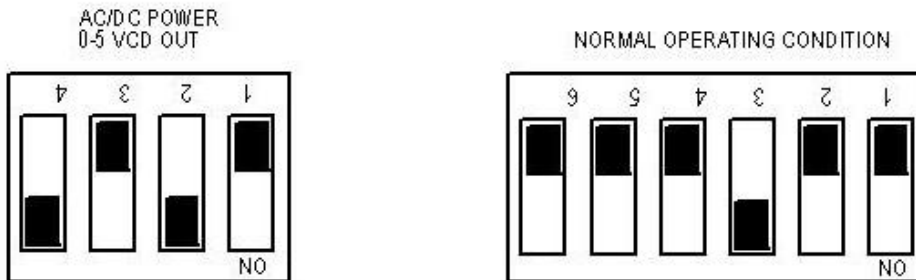
Figure 6 Power Backup System
TCS24 System Block Diagram



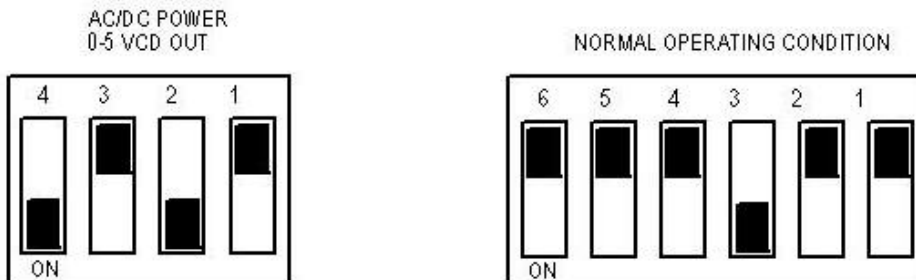
3.3 Installation Check List

TCS24 securely mounted to wall and all conduit connections tight.	
Main power wiring is NOT in same conduit as low voltage or sensor wiring	
Main power wires are copper conductors	
TCS24 is grounded.	
Check supply voltage. Change both transformer taps if necessary. See Sec. 3.21	
Carefully recheck all low voltage wiring for correct connection points.	
Carefully recheck all sensor connections for correct connection points.	
Recheck analog telephone wire connection to modem if so equipped.	
Make sure modem power switch is on if so equipped.	
Connect jumper between terminals DA if a door switch is not used.	

INDOOR HUMIDITY SENSOR SETTINGS



OUTDOOR HUMIDITY SENSOR SETTINGS



MIS-2347

3.4 System Startup

3.4.1 WALLMOUNT STARTUP CHECKLIST

Operation	Procedure	
Bypassing TCS24 Controller	Disconnect power to the TCS24. Unplug the plug in connectors J4 and J5 from the controller	
Apply power to both Wall-mounts	Follow recommended startup procedure in the Wall Mount® installation instructions. <u>Compressor damage could occur if startup procedures are not followed.</u>	
Compressor Test	Connect jumper wire on A/C unit low voltage terminals from R to Y and observe Compressor operation. (There will be a Time delay between the installation of the jumper and the starting of the Compressor. The Compressor Time Delay relay will determine the time delay period.) After the Compressor starts, the jumper wire can be removed.	
Blower Test	Connect a jumper wire on A/C unit low voltage terminals R to G and observe Blower operation (The Blower will continue to run for One (1) minute after the jumper is removed).	
Economizer Test	Connect a jumper wire on A/C unit low voltage terminals R to G and observe Blower operation. After Blower operation is confirmed, the Economizer can be tested. Leave the jumper in place from the previous step. Connect a separate jumper on the A/C unit low voltage terminals from E to F and observe the Economizer operation (Never connect power to terminals E or F).	
Heater Test	Connect a jumper wire on A/C unit low voltage terminals R to W1. The Heating contactor will engage when the jumper is connected. The Blower will also operate while this jumper is in place. To check the operation of the Heater, you will have to check the Discharge Air temperature of the A/C unit.	
Disconnect Power to Wall Mount® air conditioners	Disconnect power to Wall Mount® air conditioners. Reconnect plug-in connectors J4 and J5 to the controller. Go to TCS24 Startup Checklist	

3.4.2 TCS24 STARTUP CHECKLIST

Apply power to Wall Mount® air conditioners	Apply power to Wall Mount® air conditioners. Wait two minutes for wall mount time delays to expire.	
Apply power to TCS24	<p>Apply power to TCS24 and monitor LEDs on the front of the controller. The controller performs a self test on startup. Upon application of power, 9 LEDs will light.</p> <p>System Power led will light and stay lit</p> <p>Unit #1 is Lead Unit, Unit #2 is Lead Unit, Free Cooling, Power Failure LEDs will light for 5 seconds and then resume normal operation</p> <p>System Rx and Tx and Local Rx and Tx will all flash on, flash off, flash on and then flash off during this five seconds and will then resume normal operation.</p> <p>This completes the self test and controller will now start controlling per the sequence of operation.</p>	
Connect to Controller	<p>Use the DAK or Laptop PC to connect to controller to change setpoints.</p> <p>See Section 5.0 for DAK operation procedures.</p> <p>See Section 6.0 for direct connect PC operation.</p>	

4.0 OPERATION

This section describes the sequence of operation of the controller. The tools available for monitoring and controlling the air conditioners for both on-site and remote operations are explained. The remote trending, alarming, and site setup software are detailed.

4.1 General

This section will describe the sequence of operation of the controller. Cooling, heating, dehumidification, and alarm sequences are explained.

4.2 Sequence of Operation

This sequence of operation is for the TCS24-003 software package. Different software packages have different sequences of operation. Check the last three numbers of the TCS24 model number on the serial plate to verify that the sequence installed is "003".

4.2.1 COOLING SEQUENCE WITH ECONOMIZERS

Free cooling setpoint, that is, the outdoor conditions at which cooling is handled by the economizer, can be configured to use either enthalpy or dry bulb temperature.

Outdoor Enthalpy or Temperature is calculated from Outdoor Temperature and/or Outdoor Humidity sensors. If the outdoor enthalpy or temperature is below the free cooling setpoint, free cooling is enabled and Output #15, Free Cooling is lit.

Active Cooling Setpoint is compared to Space Temperature. If Space temperature is above Active Cooling Setpoint, stage 1 cooling is enabled. If Free Cooling is enabled, Economizer and Blower of the Unit are energized. If Free Cooling is inhibited, Compressor and Blower of the Unit are energized.

If the Space Temperature is above Active Cooling Setpoint plus 2 deg F°, stage 2 cooling is enabled. If Free Cooling is enabled, Compressor and Blower of the Unit are energized.

4.2.2 HEATING SEQUENCE

Active Heating Setpoint is compared to Space Temperature. If Space temperature is below Active Heating Setpoint, Stage 1 heating is enabled. Heater and Blower of the Unit are energized.

4.2.3 FAN SEQUENCE

The Unit Evaporator Fan is programmed for continuous operation. Operator can change continuous operation to cycle on demand. Lag unit fan will cycle on demand.

4.2.4 OCCUPIED / UNOCCUPIED MODE SEQUENCE

In heating mode, activation of the Occupancy Override Button will change the Active Heating Setpoint from Unoccupied Heating Setpoint to Occupied Heating Setpoint for a period of two hours. In cooling mode, activation of the Occupancy Override Button will change the Active Cooling Setpoint from Unoccupied Cooling Setpoint to Occupied Cooling Setpoint for two hours.

4.2.5 ALARM SEQUENCE

The controller will alarm on the following failures. Modem dial-out is initiated when any of the following alarms occur.

High Space Temperature

When Space Temperature is above High Temperature Alarm Setpoint a critical alarm is logged in the Event List and Output 12, Shelter Alarm, is energized. This is a self clearing alarm.

Low Space Temperature

When Space Temperature is below Low Temperature Alarm Setpoint a critical alarm is logged in the Event List and Output 12, Shelter Alarm, is energized. This is a self clearing alarm.

High Space Humidity

When Space Humidity is above High Humidity Alarm Setpoint a critical alarm is logged in the Event List and Output 12, Shelter Alarm, is energized. This is a self clearing alarm.

Low Space Humidity

When Space Humidity is below Low Humidity Alarm Setpoint a critical alarm is logged in the Event List and Output 12, Shelter Alarm, is energized. This is a self clearing alarm.

Blower Failure Unit #1

If Blower operation is called for the blower airflow sensor is checked. If the airflow sensor does not confirm that there is airflow, Output 7, Unit #1 Blower, is de-energized. After 30 seconds the blower is energized again. If airflow is not sensed, Output 7, Unit #1 Blower, is de-energized. After another 30 seconds the blower is energized again. If airflow is not sensed, Output 7, Unit #1 Blower, is de-energized and locked out. A critical alarm is logged in the Event List and Output 12, Shelter Alarm, is energized. The Output Alarm must be cleared to resume operation.

Compressor Lockout Failure Unit #1

If Compressor operation is not verified because the High or Low Pressure Lockout Relay has been energized, Output 5, Unit #1 Compressor, is de-energized and locked out. A critical alarm is logged in the Event List and Output 12, Shelter Alarm, is energized. The Output Alarm must be cleared to resume operation. Verify is tried 3 times before the output is locked out. Compressor Operation is verified by Unit #1 Compressor Lockout Relay and Unit #1 Compressor Current Switch.

Compressor Current Failure Unit #1

If Unit #1 Compressor is on and Unit #1 Compressor Current Switch is not valid, a critical alarm is logged in the Event List and Output 12, Shelter Alarm, is energized. The Output Alarm must be cleared to resume operation. Verify is tried 3 times before the output is locked out. Compressor Operation is verified by Unit #1 Compressor Lockout Relay and Unit #1 Compressor Current Switch.

Dirty Filter Unit #1

If Unit #1 Dirty Filter Switch is closed, a low priority alarm is logged in the Event List and Output 12, Shelter Alarm, is energized. This alarm must be reset at the unit.

Utility Power Failure

If Input #13, Power Sense, is closed indicating a utility power failure, a critical priority alarm is logged in the Event list and Output 12, Shelter Alarm, is energized. All unit outputs are de-energized. Two minutes after the alarm, Output #3, Power Transfer Switch, is energized. Three minutes after the alarm, Lead Unit Blower and Lead Unit Economizer are energized continuously until Utility Power Failure Alarm is cleared. This is a self clearing alarm.

Fire Trouble

If Input #9, Fire Trouble, is closed indicating a problem with the Fire Alarm System, a medium priority alarm is logged in the Event list and Output 12, Shelter Alarm, is energized.

Fire Alarm

If Input #10, Fire Alarm, is closed indicating a fire in the Zone, a critical priority alarm is logged in the Event list and Output 12, Shelter Alarm, is energized. All unit outputs are de-energized.

Door Alarm

If Input #9, Door Alarm, is open for more than three minutes indicating an open door, a medium priority alarm is logged in the Event list and Output 12, Shelter Alarm, is energized. The door must be opened continuously for more than three minutes for the alarm to be logged. This is a self clearing alarm.

4.2.6 DEHUMIDIFICATION SEQUENCE

Dehumidification Setpoint is compared to Space Humidity. If Space Humidity is above Dehumidification Setpoint, Stage 1 cooling is enabled. Compressor and Blower of the Lead Unit are energized. During dehumidification Active Heating Setpoint and Active Cooling Setpoint are changed to 70° and 72° respectively and cannot be changed. This prevents coil freeze up during dehumidification.

If Space temperature is cooled below Active Heating Setpoint by the dehumidification, Stage 1 heating is enabled. Heater and Blower of the Lead Unit are energized.

4.2.7 THERMAL SHOCK PROTECTION SEQUENCE

The thermal shock protection sequence protects equipment in the structure from being subjected to rapid changes in temperature after a power outage. The thermal shock routine limits the rate of change in the zone temperature to less than 15 degrees F per hour. This is accomplished by making incremental changes to a temporary setpoint every 8 minutes until the desired setpoint is reached. If the room temperature is more than 6 degrees above the setpoint the thermal shock routine is active.

4.2.8 POWER MANAGEMENT SEQUENCE

If Input #13, Power Sense, is closed indicating a utility power failure, a critical priority alarm is logged in the Event list and Output 12, Shelter Alarm, is energized. All unit outputs are de-energized. Two minutes after the alarm, Output #3, Power Transfer Switch, is energized. Three minutes after the alarm, Lead Unit Blower and Lead Unit Economizer are energized continuously until Utility Power Failure Alarm is cleared. The economizer modulates to maintain a 55 degree F entering air temperature. This is a self clearing alarm.

4.2.9 SETPOINTS

The default setpoint for all points are listed below. All setpoints are user changeable within the ranges listed.

Occupied Heating Setpoint	Default	70.0	F°	Range	60.0 - 70.0 F°
Unoccupied Heating Setpoint	Default	68.0	F°	Range	55.0 - 70.0 F°
Occupied Cooling Setpoint	Default	75.0	F°	Range	72.0 - 80.0 F°
Unoccupied Cooling Setpoint	Default	80.0	F°	Range	72.0 - 85.0 F°
High Temperature Alarm Setpoint	Default	90.0	F°	Range	80.0 - 100.0 F°
Low Temperature Alarm Setpoint	Default	56.0	F°	Range	45.0 - 67.0 F°
High Humidity Alarm Setpoint	Default	60 %	RH	Range	55 % - 85 % RH
Low Humidity Alarm Setpoint	Default	20 %	RH	Range	5 % - 35 % RH
Changeover Hours	Default	24	Hrs	Range	24 - 168 Hrs
Enthalpy / Free Cooling Setpoint	Default	23.0	Btu/lb	Range	5.00 – 40.00
Btu/lb					
Dry bulb / Free Cooling Setpoint	Default	48.0	F°	Range	40.0 - 80.0 F°
Dehumidification Setpoint	Default	50 %	RH	Range	50 % - 70 % RH
Dehumidification Heating Setpoint	Default	70.0	F°	Range	Fixed, Not
adjustable					
Dehumidification Cooling Setpoint	Default	73.0	F°	Range	Fixed, Not
adjustable					

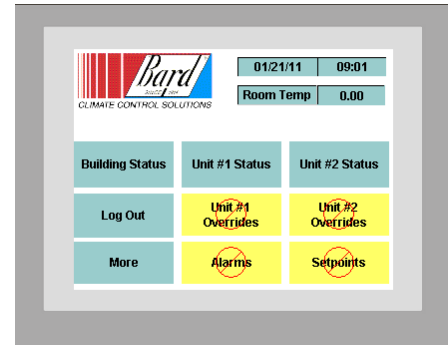
5.0 TOUCH SCREEN DISPLAY OPERATION (DAK)

The display and keypad (DAK) is used to monitor and change parameters in the controller. If DAK is needed it must be ordered as part of the TCS24. It cannot be ordered separately at a later date.

5.1 Display & Keypad Physicals

The display and keypad (DAK) consists of a 320 by 240 pixel LCD touch screen display. All messages displayed on the DAK are uploaded from the 7540 controller at power up. The LCD display uses a simple page menu system to display all functions.

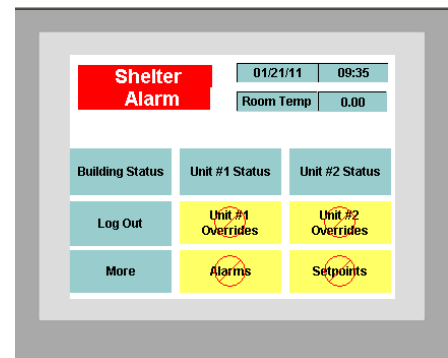
All data entry is done with in screen buttons. The specific function of these touch buttons is preprogrammed and not user configurable.



The DAK plugs into the 7540 controller through a pre-wired cord set. All communication signals are sent through this cord set to the DAK. The display and keypad (DAK) communicates with the 7540 controller via an RS485 communication bus using a proprietary communication protocol. The DAK will only function when plugged into the 7540 controller. The DAK uses a separate 24VDC power supply, which has a 1 amp fuse on board.

5.2 Power Up

The main information screen will be displayed. The main screen displays the controller time and date, room temperature, and 9 screen buttons to display various information gathered from the controller. The screen buttons display Building Status, Unit #1 Status, Unit #2 Status, Log Out, Unit #1 Overrides, Unit #2 Overrides, More, Alarms, and Setpoints.



A More button displays additional buttons which will display more information. A Back button will take you back to the previous screen.

Blue screen buttons are accessible to anyone with viewing access. Yellow buttons require a level 5 password access or higher. Orange buttons require a level 8 password access or higher. If the screen button is not available with the current password level, a red circle with a slash through it will be present on the button. If one of these buttons is pressed the password entry screen will be displayed and a higher level password may be entered to access the information.

If an Alarm is present in the controller the Bard logo will change and a flashing shelter alarm will be displayed.

5.3 Menu Tree

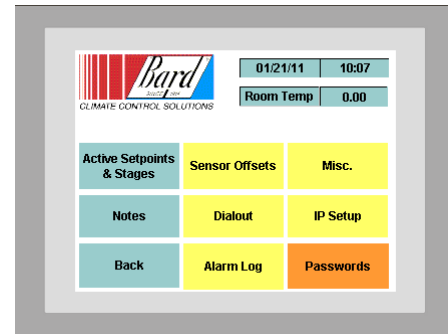
The DAK consists of two main screens.

<u>Main Screen #1</u>	
Building Status Button	Displays the building Status Screen
Unit Status #1	Displays the Unit #1 Status Screen
Log Out	Returns access level to View only
Unit #1 Overrides	Displays the Unit #1 Overrides Screen
More	Display Main Screen #2
Alarms	Displays Alarm Screen
Setpoints	Displays Setpoints Screen

When the More button is pressed Main Screen #2 will display the following buttons:

Main Screen #2

Active Setpoints and Stage	Displays Setpoints and Staging
Sensor offsets	Displays Sensor offsets Screen
Misc	Displays Misc. Properties
Notes	Displays Notes Screen
Dialout	Displays Dialout Screen
IP setup	Displays IP Setup Screen
Back	Returns to Main Screen #1
Alarm Log	Displays Alarm Log Screen
Passwords	Displays Password Screen

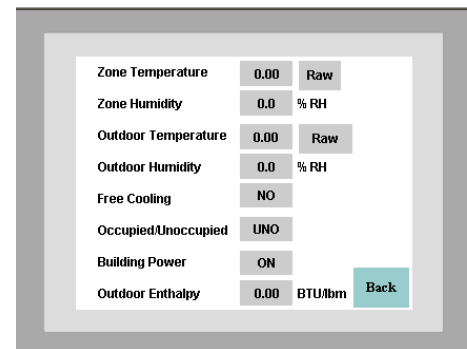


5.3.1 BUILDINGS STATUS SCREEN

Authority Level Required to Make Changes - Does not apply. No changes can be made from this screen.

The Building Status screen displays the following information about the shelter environment.

Zone Temperature	Value DegF
Zone Humidity	Value RH
Outdoor Temperature	Value DegF
Outdoor Humidity	Value RH
Free Cooling	YES/NO
Occupied /Unoccupied	OCC/UNO
Building Power	ON/ OFF
Outdoor Enthalpy	Value Btu/Lb



5.3.1.1 Zone Temperature

The zone temperature item displays the current temperature inside the structure.

5.3.1.2 Zone Humidity

The zone humidity item displays the current humidity inside the structure. This is an optional sensor and may or may not be present in your system. The current value will read one percent, "1 %" if no sensor is present.

5.3.1.3 *Outdoor Temperature*

The outdoor temperature item displays the current temperature outside the structure.

5.3.1.4 *Outdoor Humidity*

The outdoor humidity item displays the current humidity outside the structure.

5.3.1.5 *Free Cooling On / Off*

This display item indicates whether outside conditions are suitable to allow the use of outside air to provide free cooling inside the structure. The controller calculates the either outside temperature or enthalpy from the Outdoor Temperature and Outdoor Humidity and compares this value with the Free Cooling Setpoint. The Free Cooling Setpoint can be either a dry bulb temperature or enthalpy. This is user selectable. If outdoor temperature or enthalpy, whichever the user has selected, is less than the Free Cooling Setpoint then Free Cooling is ON. If the temperature or enthalpy of the outside air is more than the Free Cooling Setpoint then Free Cooling is Off.

5.3.1.6 *Occupied/ Unoccupied OCC/UNO*

This display indicates the status of the After-hours Occupancy Override Button. If the display shows “UNO”, the controller is in the unoccupied mode and the unoccupied setpoints prevail. If the display shows “OCC”, the controller is in the occupied mode and the occupied setpoints prevail. Depressing the Occupancy Override Switch on the Zone Temperature Sensor for one second triggers the Occupied mode for two (2) hours.

5.3.1.7 *Building Power On/Off*

This display item indicates if utility power is available at the structure. If utility power is available “On” is displayed. If utility power is not present a “NO” is displayed. See 3.2.4.3 Power Failure Sense Input for more information on the hardware needs to implement this input/alarm.

5.3.1.8 *Outdoor Enthalpy*

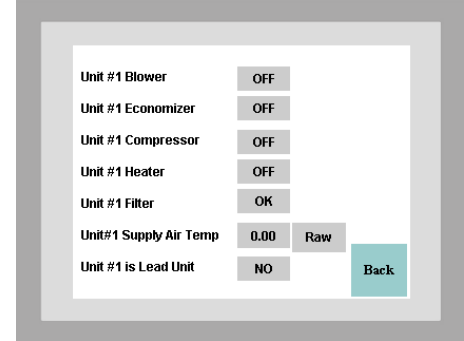
This outdoor enthalpy displays the calculated outdoor air enthalpy. The outdoor enthalpy is calculated from the outdoor temperature and outdoor humidity sensors and is used to determine whether the air is suitable for free cooling or not.

5.3.2 UNIT #1 STATUS SCREEN

Authority Level Required to Make Changes - Does not apply. No changes can be made from this screen.

The Unit Status screen displays the following information about both air conditioners.

Unit #1 Blower	On/Off
Unit #1 Economizer	On/Off
Unit #1 Compressor	On/Off
Unit #1 Heater	On/Off
Unit #1 Filter	Clean/Dirty
Unit #1 Supply Air Temperature	Value DegF
Unit #1 Is Lead Unit	On/Off



5.3.2.1 Unit #1 Blower

This display item will show “Off” if the unit #1 blower output of the controller is not energized. This display item will show “On” if the unit #1 blower output of the controller is energized.

5.3.2.2 Unit #1 Economizer

This display item will show “Off” if the unit #1 economizer output of the controller is not energized. This display item will show “On” if the unit #1 economizer output of the controller is energized.

5.3.2.3 Unit #1 Compressor

This display item will show “Off” if the unit #1 compressor output of the controller is not energized. This display item will show “On” if the unit #1 compressor output of the controller is energized.

5.3.2.4 Unit #1 Heater

This display item will show “Off” if the unit #1 heater output of the controller is not energized. This display item will show “On” if the unit #1 heater output of the controller is energized.

5.3.2.5 Unit #1 FILTER

This display item will show “Clean” if the unit #1 dirty filter alarm of the controller is not energized. This display item will show “Dirty” if the unit #1 filter alarm is energized.

5.3.2.6 Unit #1 Supply Air Temperature

This display will show the current discharge air temperature in the supply air duct of Unit #1 in F°.

5.3.3 LOG OUT

Authority Level Required to Make Changes - Does not apply. Pressing this button resets the current permission level to view only from any other access level.

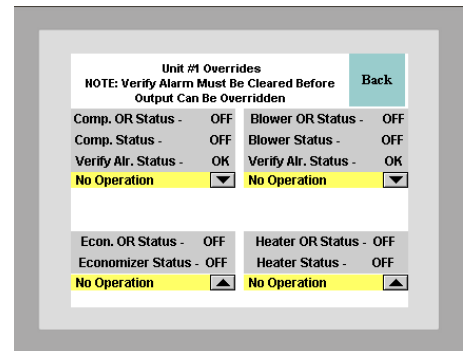
5.3.4 OVERRIDES UNIT #1 SCREEN

Caution: Overrides remain in effect until they are either cleared by the operator or power is cut to the controller. Use with caution.

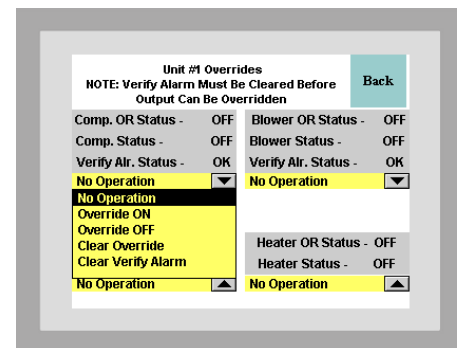
Note: Outputs cannot be overridden until verify alarms have been cleared. This applies to blowers and compressors.

The Overrides Screen displays the following information about the controller:

Compressor Override Status Unit #1	On/Off
Compressor Status Unit #1	On/Off
CompReSSorVerify Alarm Status Unit #1	OK/ ALR
Blower Override Status Unit #1	On/Off
Blower Status Unit #1	On/Off
BlowerVerify Alarm Status Unit #1	OK/ ALR
Economizer Override status Unit #1	On/Off
Economizer Status Unit #1	On/Off
Heater Override status Unit #1	On/Off
Heater Status Unit #1	On/Off



To override an output, Press the arrow next to the No Operation line on the output you wish to change. A drop down box will appear. Press the needed operation. There are six (6) actions now available, No Operation, Override On, Override Off, Clear Override, Clear Verify Alarm. See Section 6.45 for more information.



5.3.4.1 #1 Blower Override

This list item uses the Clr Verify Alr, O/R On, O/R Off, and Clr O/R actions. The Clr Verify Alr action clears a blower failure alarm in the alarm object. In the event of a unit #1 blower failure alarm, the output of the controller will be disabled until the problem is corrected and the alarm is cleared. Once the problem is corrected use the Clr Verify Alr action to re-enable normal operation of the output.

Any alarm of the Unit #1 Blower must be cleared before an override is accepted. Once overridden the output will remain overridden until the Clr O/R action is sent to the output or power is interrupted to the controller. Entering the O/R On action will turn on the blower output to unit #1 and it will remain on until cleared. Entering the O/R Off action will disable the output to the unit #1 blower and it will remain disabled until cleared. Use the Clr O/R to cancel an override action and resume normal operation.

5.3.4.2 #1 Economizer Override

This list item uses the Clr Verify Alr, O/R On, O/R Off, and Clr O/R actions. The Clr Verify Alr has no effect on this item.

Entering the O/R On action will turn on the economizer output to unit #1 and it will remain on until cleared. Entering the O/R Off action will disable the output to the unit #1 economizer and it will remain disabled until cleared. Once overridden the output will remain overridden until the Clr O/R action is sent to the output or power is interrupted to the controller Use the Clr O/R to cancel an override action and resume normal operation.

5.3.4.3 #1 Compressor Override

This list item uses the Clr Verify Alr, O/R On, O/R Off, and Clr O/R actions. The Clr Verify Alr action clears a compressor failure alarm in the alarm object. In the event of a unit #1 compressor failure alarm, the output of the controller will be disabled until the problem is corrected and the alarm is cleared. Once the problem is corrected use the Clr Verify Alr action to re-enable normal operation of the output.

Any alarm of the Unit #1 compressor must be cleared before an override is accepted. Once overridden the output will remain overridden until the Clr O/R action is sent to the output or power is interrupted to the controller. Entering the O/R On action will turn on the compressor output to unit #1 and it will remain on until cleared. Entering the O/R Off action will disable the output to the unit #1 compressor and it will remain disabled until cleared. Use the Clr O/R to cancel an override action and resume normal operation.

5.3.4.4 #1 Heater Override

This list item uses the Clr Verify Alr, O/R On, O/R Off, and Clr O/R actions. The Clr Verify Alr has no effect on this item.

Entering the O/R On action will turn on the heater output to unit #1 and it will remain on until cleared. Entering the O/R Off action will disable the output to the unit #1 heater and it will remain

disabled until cleared. Once overridden the output will remain overridden until the Clr O/R action is sent to the output or power is interrupted to the controller. Use the Clr O/R to cancel an override action and resume normal operation.

A supervisor authority level is needed to use this item.

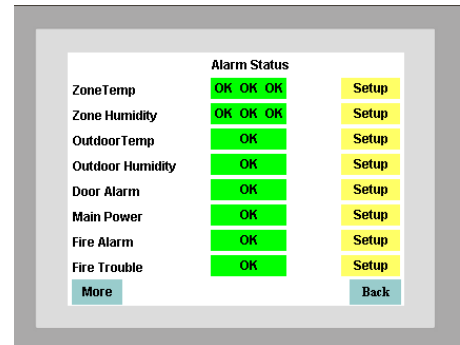
5.3.5 MORE

Displays the Main Menu #2 Screen.

5.3.6 ALARMS SCREEN

The Alarm Screen #1 displays the following information about the controller:

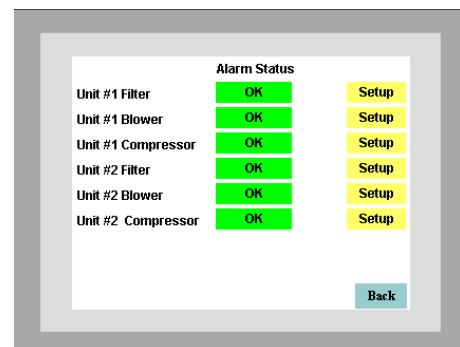
- Zone Temp Alarm
- Zone Humidity Alarm
- Outdoor Temperature Alarm
- Outdoor Humidity Alarm
- Door Alarm
- Main Power Alarm
- Fire Alarm
- Fire Trouble
- More



When the More button is pressed Alarm Screen number #2 will be displayed.

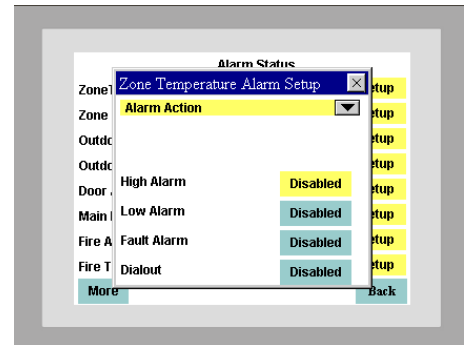
The Alarm Screen #2 displays the following information about the controller:

- #1 Filter Alarm
- #1 Blower Alarm
- #1 Compressor Alarm



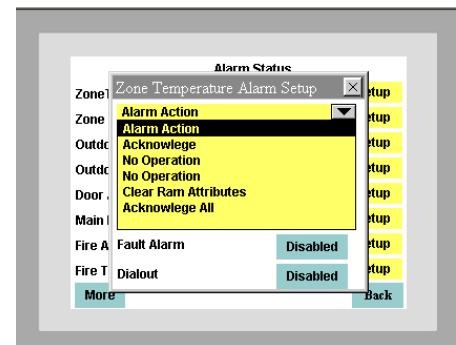
From this menu, the current alarm status of an item is displayed and, with the proper authorization, the alarm can be acknowledged. Acknowledging an alarm resets the shelter alarm output so that if another alarm is registered the shelter alarm will reenergize to indicate a new alarm. Acknowledging the alarm does not clear the alarm. The fault condition must be corrected before the alarm is cleared.

Three types of alarms are displayed. H signifies a high alarm. L signifies a low alarm. F signifies a fault alarm.



To acknowledge an alarm, Press the setup button. This will display an Alarm Setup Screen. Press the alarm action drop down arrow.

There are four (4) actions now available, Acknowledge, No Operation, Clear Ram Attributes, Acknowledge All. Press Acknowledge to acknowledge the alarm. If more than one alarm is present press Acknowledge All to acknowledge all alarms.



5.3.6.1 Zone Temp Alarm

The space temperature alarm item will show one of four different alarm messages. An OK alarm message indicates that the Zone Temperature Sensor is functioning normally. A Fault alarm message indicates that the Zone Temperature Sensor is sensing a value above 120 F° or below -20 F°. This probably indicates a faulty sensor. When a Space Temperature Fault alarm is detected the Zone Temperature value defaults to 74 degrees effectively shutting down heating and cooling until the sensor is replaced.

An Alarm (High) or Alarm (Low) message indicates that the sensor is sensing a temperature above or below, respectively, the High Temperature Alarm Setpoint or Low Temperature Alarm Setpoint.

The Fault alarm takes precedence over the Alarm (High) or Alarm (Low) message. If the Sensor is failed high or low the Alarm (High) or Alarm (Low) alarms will also be activated but only the Fault alarm will be displayed because this is the actual condition causing the other alarms.

These are all self-clearing alarms and will reset themselves when the alarm condition no longer exists. This is a critical alarm.

5.3.6.2 Zone Humidity Alarm

The Zone Humidity Alarm item will show one of four different alarm messages. An "OK" alarm message indicates that the Zone Humidity Sensor is functioning normally. A Fault alarm message indicates that the Zone Humidity Sensor is sensing a value above 99 % RH or below 2 % RH. This probably indicates a faulty sensor. When a Space Humidity Fault alarm is detected, the Zone Humidity value defaults to 50 % RH until the sensor is replaced.

An Alarm (High) or Alarm (Low) message indicates that the sensor is sensing humidity above or below, respectively, the High Humidity Alarm Setpoint or Low Humidity Alarm Setpoint.

The Fault alarm takes precedence over the Alarm (High) or Alarm (Low) message. If the Sensor is failed high or low the Alarm (High) or Alarm (Low) alarms will also be activated but only the Fault alarm will be displayed because this is the actual condition causing the other alarms.

These are all self-clearing alarms and will reset themselves when the alarm condition no longer exists. This is a medium priority alarm.

5.3.6.3 *Outdoor Temp Alarm*

The Outdoor temperature alarm item will show one of two different alarm messages. An “OK” alarm message indicates that the Outdoor Temperature Sensor is functioning normally. A Fault alarm message indicates that the Outdoor Temperature Sensor is sensing a value above 120 F° or below -20 F°. This probably indicates a faulty sensor.

These are all self-clearing alarms and will reset themselves when the alarm condition no longer exists. This is a critical alarm.

5.3.6.4 *Outdoor Humidity Alarm*

The Outdoor Humidity Alarm item will show one of two different alarm messages. An “OK” alarm message indicates that the Outdoor Humidity Sensor is functioning normally. A Fault alarm message indicates that the Outdoor Humidity Sensor is sensing a value above 99 % RH or below 2 % RH. This probably indicates a faulty sensor. When an Outdoor Humidity Fault alarm is detected, the Outdoor Humidity value defaults to 50 % RH until the sensor is replaced.

These are all self-clearing alarms and will reset themselves when the alarm condition no longer exists. This is a medium priority alarm.

5.3.6.5 *Door Alarm*

The Door Alarm item monitors the door switch in the structure. An “OK” alarm message indicates that no alarm is present and that the door is closed. A “Fault” alarm message indicates that an alarm is present and that the door in the structure is open.

This is a self-clearing alarm and will reset itself when the alarm condition no longer exists. This is a critical priority alarm.

5.3.6.6 *Main Power Fail*

The Main Power Fail alarm item will show one of two different alarm messages. An “OK” alarm message indicates that no alarm is present and that utility power is present at the site. A “Fault” alarm message indicates that an alarm is present and the system is operating on backup power. This feature will operate only if the TCS24 is connected to an uninterruptible power supply.

This is a self-clearing alarm and will reset itself when the alarm condition no longer exists. This is a critical priority alarm.

5.3.6.7 ***Fire Trouble***

The Fire Trouble alarm item monitors the fire alarm system in the structure. An “OK” alarm message indicates that no alarm is present and that the fire alarm system is operating normally. A “Fault” alarm message indicates that an alarm is present and the fire alarm system is malfunctioning.

This is a self-clearing alarm and will reset itself when the alarm condition no longer exists. This is a medium priority alarm.

5.3.6.8 ***Fire Alarm***

The Fire Alarm item monitors the fire alarm system in the structure. An “OK” alarm message indicates that no alarm is present and that the fire alarm system has not detected a fire. A “Fault” alarm message indicates that an alarm is present and that the fire alarm system has detected a fire in the structure.

This is a self-clearing alarm and will reset itself when the alarm condition no longer exists. This is a critical priority alarm.

5.3.6.9 ***#1 Filter Alarm***

The Filter alarm item will show one of two different alarm messages. An “OK” message indicates that the filter is clean enough to operate. A Fault alarm message indicates that the filter is dirty and needs replaced.

This is a self-clearing alarm and will reset itself when the alarm condition no longer exists. The filter sensor is a manually reset device and must be reset once the filter is changed to clear the alarm condition. This is a low priority alarm.

5.3.6.10 ***#1 Blower Alarm***

The Blower Fail alarm item will show one of two different alarm messages. A “No Alarm” message indicates that the blower airflow sensor contacts have closed and the blower is functioning normally. A Fault alarm message indicates that the blower airflow sensor contacts have not closed. A faulty blower motor, wheel or sensor could cause this alarm.

This alarm must be cleared before operation of the blower can resume. Use the Clr Verify Alr action in the Override menu to clear the alarm. This is a critical alarm.

5.3.6.11 ***#1 Compressor Alarm***

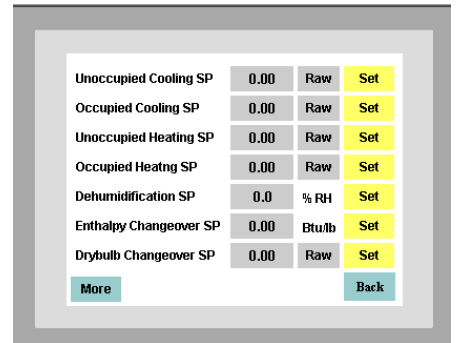
The Compressor Alarm item will show one of two different alarm messages. “No Alarm” message indicates that the compressor verify circuit contacts have closed and the compressor is functioning normally. A Fault alarm message indicates that the compressor verify circuit contacts have not closed. A Trip on High or Low pressure, no compressor current, failed blower, or faulty compressor current sensor could cause this alarm.

This alarm must be cleared before operation of the compressor can resume. Use the Clr Verify Alr action in the Override menu to clear the alarm. This is a critical alarm.

5.3.7 SETPOINTS SCREEN

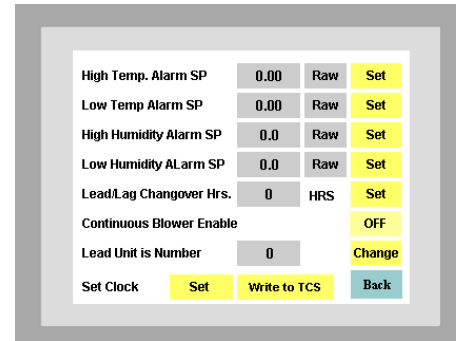
The Setpoints screen displays the following information about the controller.

Occupied Cooling Setpoint	Current Setpoint
Unoccupied Cooling Setpoint	Current Setpoint
Occupied Heating Setpoint	Current Setpoint
Unoccupied Heating Setpoint	Current Setpoint
Dehumidification Setpoint	Current Setpoint
Free Cooling Enthalpy Setpoint	Current Setpoint
Free Cooling Dry Bulb Setpoint	Current Setpoint
More	Display Setpoint Screen #2
Back	Return to previous screen



Setpoint Screen #2

High Temperature Alarm Setpoint	Current Setpoint
Low Temperature Alarm Setpoint	Current Setpoint
High Humidity Alarm Setpoint	Current Setpoint
Low Humidity Alarm Setpoint	Current Setpoint
Continuous Blower Enable	ON/OFF
Lead Unit is	1/2
Set Clock	



From this menu you can display the current setpoint and, with the proper authorization, change the current setpoints. The values displayed for each of these points is updated every ten (10) seconds.

To change a set point press the set button next to the desired setpoint. A pop up keyboard will appear. Use the keyboard to enter the desired value. Once done with changing the digits press <Enter> to accept the change. If the value was accepted the new setpoint will be shown. If the setpoint was not accepted the value will show “ERROR!” This indicates that the value downloaded was out of the acceptable range for this setpoint. See section 4.2.11 for the setpoint ranges or the individual sections below. This acceptable range is also listed directly below the data entry field. To correct your entry enter a value within the acceptable range.

5.3.7.1 Occupied Cooling Setpoint

The occupied cooling setpoint requires an authority level of 5 or higher to change. The Occupied Cooling Setpoint Range is from 72.0 to 80.0 F°. The default value is 75.0 F°

5.3.7.2 *Unoccupied Cooling Setpoint*

The unoccupied cooling setpoint requires an authority level of 5 or higher to change. The Unoccupied Cooling Setpoint Range is from 72.0 to 85.0 F°. The default value is 80.0 F°.

5.3.7.3 *Occupied Heating Setpoint*

The occupied heating setpoint requires an authority level of 5 or higher to change. The Occupied Heating Setpoint Range is from 68.0 to 70.0 F°. The default value is 70.0 F°.

5.3.7.4 *Unoccupied Heating Setpoint*

The unoccupied heating setpoint requires an authority level of 5 or higher to change. The Unoccupied Heating Setpoint Range is from 60.0 to 70.0 F°. The default value is 68.0 F°.

5.3.7.5 *Dehumidification Setpoint*

The dehumidification setpoint requires an authority level of 5 or higher to change. The dehumidification setpoint range is from 50 to 65 % RH. The default value is 50 % RH.

5.3.7.6 *Free Cooling Enthalpy Setpoint*

The Enthalpy Setpoint is used to determine if the outside air is suitable to use for cooling the structure. The default value for this point is 23.00 BTU/ lb. of dry air. Consult the Enthalpy Lookup Table (Table 2) to adjust this value for the specific conditions that you wish to maintain in the structure. Read down the relative humidity column under the percentage RH you wish to maintain. Read across the inside temperature row to where it intersects the RH column. Enter this value into the Enthalpy Setpoint Display. This will ensure that economizer will never bring in outside air that is too humid.

Table 2 Enthalpy Lookup Table

Desired Indoor Temp.	Desired Indoor % Relative Humidity							
	35%	40%	45%	50%	55%	60%	65%	70%
85	23.00	25.00	27.25	29.50	31.50	33.50	35.75	37.75
84	22.50	24.50	26.75	29.00	30.75	32.75	35.00	36.75
83	22.00	24.00	26.25	28.25	30.25	32.00	34.25	36.00
82	21.50	23.50	25.25	27.50	29.50	31.50	33.25	35.00
81	20.75	22.00	24.50	26.75	29.00	30.75	32.50	34.25
80	20.25	22.25	24.25	26.25	28.25	30.00	31.75	33.25
79	20.00	21.50	23.75	25.50	27.50	29.25	30.00	32.50
78	19.50	21.00	23.00	25.00	27.00	28.50	30.25	31.75
77	19.00	20.50	22.50	24.50	26.25	28.00	29.75	31.00
76	18.50	20.25	22.00	24.00	25.50	27.25	29.00	30.25
75	18.00	19.50	21.50	23.25	25.00	26.50	28.25	29.50

5.3.7.7 Free Cooling Dry Bulb Setpoint

The Dry Bulb Setpoint is used to determine if the outside air is suitable to use for cooling the structure. The default value for this point is 48 F°. This will ensure that the economizer will never bring in outside air that is too warm to provide cooling.

5.3.7.8 High Temperature Alarm Setpoint

The high temperature alarm setpoint requires an authority level of 5 or higher to change. The High Temperature Alarm Setpoint Range is from 80.0 to 100.0 F°. The default value is 90.0 F°. The high alarm setpoint should always be set at least 7 degrees higher than the unoccupied cooling setpoint. Nuisance alarms could occur if this requirement is not followed.

5.3.7.9 Low Temperature Alarm Setpoint

The low temperature alarm setpoint requires an authority level of 5 or higher to change. Anyone may view the setpoint value. The Low Temperature Alarm Setpoint Range is from 45.0 to 67.0 F°. The default value is 56.0 F°. The low alarm setpoint should always be set at least 4 degrees lower than the unoccupied heating setpoint. Nuisance alarms could occur if this requirement is not followed.

5.3.7.10 High Humidity Alarm Setpoint

The high humidity alarm setpoint requires an authority level of 5 or higher to change. Anyone may view the setpoint value. The High Humidity Alarm Setpoint Range is from 55.0 to 85 % RH. The default value is 60.0 % RH.

5.3.7.11 Low Humidity Alarm Setpoint

The low humidity alarm setpoint requires an authority level of 5 or higher to change. The Low Humidity Alarm Setpoint Range is from 5.0 to 35 % RH. The default value is 20.0 % RH.

5.3.7.12 Continuous Blower

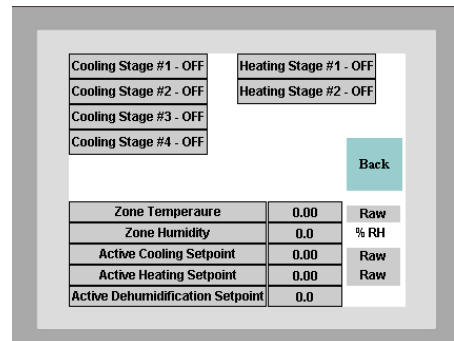
This item uses the On and Off action items. Overriding the continuous blower item to On causes the Blower Output to the lead unit to be energized continuously. Overriding the continuous blower item to Off causes the Blower Output to the lead unit to cycle on and off as there are calls for heating or cooling.

5.3.8 ACTIVE SETPOINT AND STAGES

5.3.8.1 Active Cooling Setpoint

The Active Cooling Setpoint displays the current cooling setpoint that the controller uses to determine whether cooling is required or not. If the Zone temperature is above the Active Cooling Setpoint, Stage One Cooling will be on.

The Active Cooling Setpoint will be one of three values. If the controller is in occupied mode, the Active Cooling Setpoint will be the same as the Occupied Cooling Setpoint. If the controller is in unoccupied mode, the Active Cooling Setpoint will be the same as the Unoccupied Cooling Setpoint. Occupancy is determined from the After-hours Occupancy Override Button located on the temperature sensor on the front of the TCS24. If the controller is in Dehumidification mode, the Active Cooling Setpoint will be 73° the same as the fixed Dehumidification Cooling Setpoint. The Active cooling setpoint may be different if the thermal shock routine is active. See Section 4.2.8.



The screenshot shows a control interface with the following elements:

- Four status boxes: Cooling Stage #1 - OFF, Cooling Stage #2 - OFF, Cooling Stage #3 - OFF, Cooling Stage #4 - OFF.
- Two status boxes: Heating Stage #1 - OFF, Heating Stage #2 - OFF.
- A teal "Back" button.
- A table with the following data:

Zone Temperature	0.00	Raw
Zone Humidity	0.0	% RH
Active Cooling Setpoint	0.00	Raw
Active Heating Setpoint	0.00	Raw
Active Dehumidification Setpoint	0.0	

5.3.8.2 Active Heating Setpoint

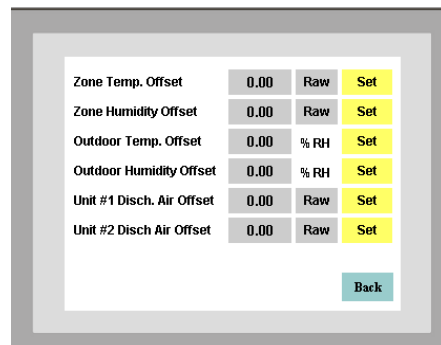
The Active Heating Setpoint displays the current heating setpoint that the controller uses to determine whether heating is required or not. If the Zone Temperature is below the Active Heating Setpoint, Stage One Heating will be on.

The Active Heating Setpoint will be one of three values. If the controller is in occupied mode, the Active Heating setpoint will be the same as the Occupied Heating Setpoint. If the controller is in

unoccupied mode, the Active Heating Setpoint will be the same as the Unoccupied Heating Setpoint. Occupancy is determined from the After-hours Occupancy Override Button located on the temperature sensor on the front of the TCS24. If the controller is in Dehumidification mode, the Active Heating Setpoint will be 70° the same as the fixed Dehumidification Heating Setpoint.

5.3.8.3 Stage Indicators

The stage indicators at the top of the screen are used to indicate which stages of cooling, heating, or dehumidification are energized. These are displayed and may be used for troubleshooting purposes.



5.3.9 SENSOR OFFSETS SCREEN

The Offset screen will allow the User to adjust the sensor offsets to calibrate for sensor tolerances. Click on the Set button to enter a new value.

5.3.9.1 Zone Temperature Offset

The Zone Temperature will add the value seen in the textbox to the Zone Temperature to calibrate the sensor.

5.3.9.2 Zone Humidity Offset

The Zone Humidity Offset will add the value seen in the textbox to the Zone Humidity to calibrate the sensor.

5.3.9.3 Outdoor Temperature Offset

The Outdoor Temperature Offset will add the value seen in the textbox to the Outdoor Temperature to calibrate the sensor.

5.3.9.4 Outdoor Humidity Offset

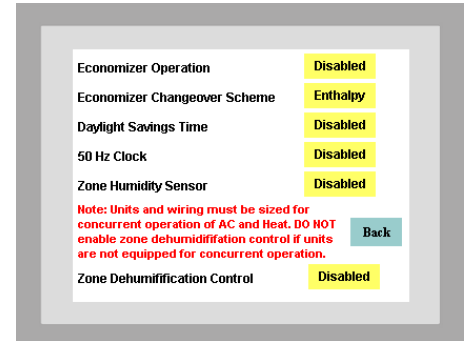
The Outdoor Humidity Offset will add the value seen in the textbox to the Outdoor Humidity to calibrate the sensor.

5.3.9.5 Unit #1 Supply Air Temperature Offset

The Unit #1 Supply Air Temperature Offset will add the value seen in the textbox to the Unit #1 Supply Air Temperature to calibrate the sensor

5.3.10 MISC. SCREEN

Economizer Operation	Enabled / Disabled
Economizer Changeover Scheme	Enthalpy / Dry Bulb
Daylight Savings Time	Enabled / Disabled
50 HZ Clock	Enabled / Disabled
Zone Humidity Sensor	Enabled / Disabled
Zone Dehumidification	Enabled / Disabled
Back	Return to previous screen



From this menu you can display the current status of the above options and, with the proper authorization, change the current status. The values displayed for each of these points is updated every ten (10) seconds. Pressing the button beside each menu item will change to the other option.

5.3.10.1 Economizer Operation

If the air conditioners controlled by the TCS do not have economizers, economizer operation should be disabled. This disables two stages of cooling that are normally used to energize the economizers if free cooling is available. Factory default for this value is enabled.

5.3.10.2 Economizer Changeover Scheme

The economizer changeover scheme is selectable between enthalpy changeover or dry bulb temperature changeover. The default for this is Enthalpy. When economizers are used, the economizers will be used as 1st and 2nd stage cooling as long as the outdoor enthalpy is below the enthalpy changeover setpoint. If the changeover scheme is dry bulb, the economizers will be used as 1st and 2nd stage cooling as long as the outdoor temperature is below the dry bulb temperature changeover setpoint.

5.3.10.3 Dry Bulb Temperature Changeover

The economizer changeover scheme is selectable between enthalpy changeover or dry bulb temperature changeover. The default dry bulb temperature changeover is disabled. If you wish to change the economizer changeover scheme to dry bulb temperature changeover use this item. When economizers are used the economizers will be used as 1st and 2nd stage cooling as long as the outdoor temperature is below the dry bulb temperature changeover setpoint.

5.3.10.4 Daylight Savings Time

If the area of the country where the TCS24 is located uses Daylight Savings Time, daylight savings time should be enabled for accurate clock readings. Factory default for this value is enabled.

5.3.10.5 50HZ Clock

If the area of the country where the TCS24 is located uses 50 HZ power, 50 HZ Clock should be enabled for accurate clock readings. Factory default for this value is disabled.

5.3.10.6 Zone Humidity Sensor

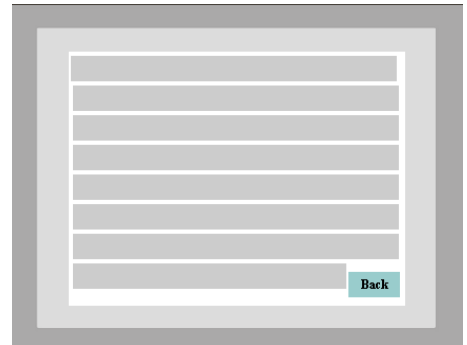
The TCS can be ordered without an indoor humidity sensor. The model number will have a “T” in the 7th position of the model number if no humidity sensor was ordered. Factory default for this value is enabled. If the TCS does not have an indoor humidity sensor, disable this feature.

5.3.10.7 Zone Dehumidification

The TCS24 can provide zone dehumidification by running the air conditioners and cycling electric heat on and off to maintain Zone temperature. Factory default for this value is disabled. Enable this feature if dehumidification is required. Note: The air conditioner circuit breakers and wiring must be sized for concurrent operations air-conditioning and electric heat. Special dehumidification models are available for use with this feature. These models have circuit breakers and special MCA and MOP ratings that allow concurrent operation of the air conditioners and electric heat. These are special, dedicated code models ending in D053, D061, D062, D064, or D066. Consult your Bard representative for more information.

5.3.11 NOTES SCREEN

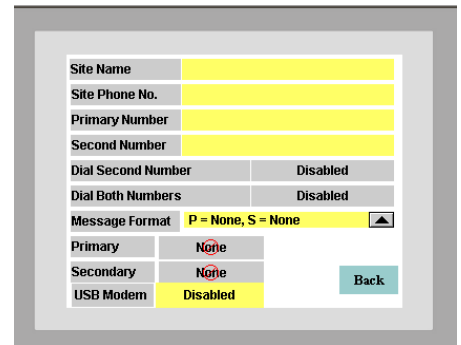
The notes Screen is a group of 8 message boxes that can be used to make notes about the controller or leave messages concerning the controller for the next technician. Clicking on one of the message boxes allows you to type a message up to 32 characters long.



5.3.12 DIALOUT SCREEN

The Dial Out screen displays the following information about the controller:

Site Name	
Site Phone Number	
Primary Number	
Secondary Number	
Dial Second Number	Enabled /Disabled
Dial Both numbers	Enabled /Disabled
Message Format	None/Pager/Printer
Primary Format	Display only
Secondary Format	Display only
USB Modem	Enabled /Disabled
Back	Return to previous screen



5.3.12.1 Site Name

The site name is included with other information when the TCS dials out and connects to a Printer. When the TCS dials out to a pager it sends the phone number of the site to the pager so the technician can call in to the site to see what the problem is. The site name that is stored in the controller is displayed and can be changed by clicking on the yellow box next to the Site Name.

5.3.12.2 Site Phone No.

The Site phone number is the phone number of the site for modem connection. This number can be up to 25 characters long. The number may contain hyphens or commas, but they are not necessary for operation. The site Phone Number name that is stored in the controller is displayed and can be changed by clicking on the yellow box next to the Site Name.

5.3.12.3 Primary number

The Primary number is the first phone number that will be dialed for Alarm notification. This number can be up to 25 characters long. The number may contain hyphens or commas, but they are not necessary for operation. The Primary number that is stored in the controller is displayed and can be changed by clicking on the Yellow box next to the Primary Number.

5.3.12.4 Secondary number

The Secondary number is the second phone number that will be dialed for Alarm notification. This number can be up to 25 characters long. The number may contain hyphens or commas, but they are not necessary for operation. The Secondary number that is stored in the controller is displayed and can be changed by clicking on the Yellow box next to the Secondary Number.

5.3.12.5 Dial Second Number

If the Dial Second Number box is enabled the Secondary phone number will be dialed to send alarm messages. If the Dial Second Number box is disabled the Primary phone number will be dialed to send alarm messages.

5.3.12.6 Dial Both Numbers

If the Dial Both numbers is enabled, the alarm messages will be sent to both numbers.

5.3.12.7 Message Format

The Message Format Box sets the message format type for both the primary and secondary phone numbers. Pressing the drop down box arrow will expand the drop down box and show all possible combinations of either None, Line Printer, or Pager. Once an option is chosen the message format will show Next to the Primary and Secondary boxes.

Site Name	P = None, S = None
Site Phone No.	P = Line Printer, S = None
Primary Number	P = Pager, S = None
Second Number	P = None, S = LP
Dial Second Number	P = LP, S = LP
Dial Both Numbers	P = Pager, S = LP
Message Format	P = Pager, S = LP
Primary	NumERIC Pager
Secondary	Line Printer
USB Modem	Disabled

Back

5.3.12.8 Primary

The primary message format is the type of Alarm message that will be sent for Alarm notification. The message will be a printer message or pager message.

5.3.12.9 Secondary

The secondary message format is the type of Alarm message that will be sent for Alarm notification. The message will be a printer message or pager message.

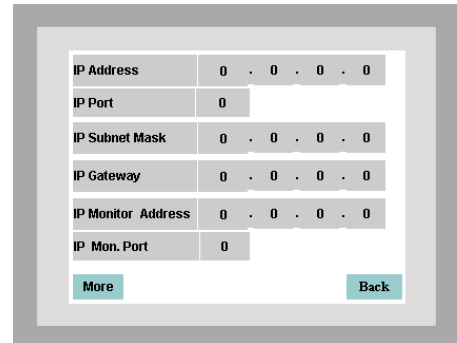
5.3.12.10 USB Modem

The USB Modem is for future use. USB Port is Enabled /Disabled with this button.

5.3.13 IP SETUP SCREEN

The IP setup screen stores and displays the following information for an external USB Ethernet adapter. If the EtherLink 2 module is purchased with the controller this information not used.

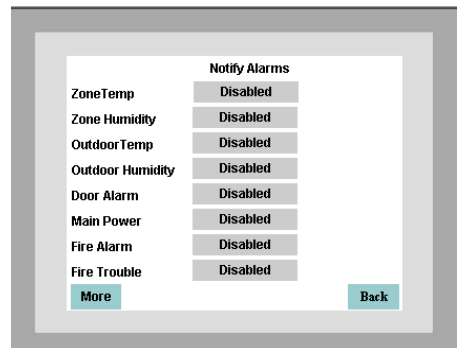
- IP Address
- IP Port
- IP Subnet Mask
- IP Gateway
- IP Monitor Address
- IP Monitor Port
- Back Return to previous screen
- More Display Notify Screen #1



IP Setup Screen #2 – Notify alarms.

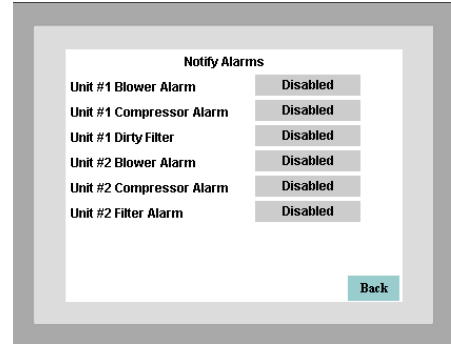
The IP setup screen #2 stores and displays the following information on notify alarms. When enabled, an alarm will be sent to a Weblink Server which would monitor numerous sites for alarms.

- Zone Temp Enabled /Disabled
- Zone Humidity Enabled /Disabled
- Outdoor Temp Enabled /Disabled
- Outdoor Humidity Enabled /Disabled
- Door Alarm Enabled /Disabled
- Main Power Enabled /Disabled
- Fire Alarm Enabled /Disabled
- Fire Trouble Enabled /Disabled
- Back Return to previous screen
- More Display Notify Screen #2



Notify Alarms Screen #2

Unit#1 Blower Alarm Enabled /Disabled
 Unit #1 Compressor Alarm Enabled /Disabled
 Unit #1 Dirty Filter Alarm Enabled /Disabled
 Unit#1 Blower Alarm Enabled /Disabled
 Unit #1 Compressor Alarm Enabled /Disabled
 Unit #1 Dirty Filter Alarm Enabled /Disabled

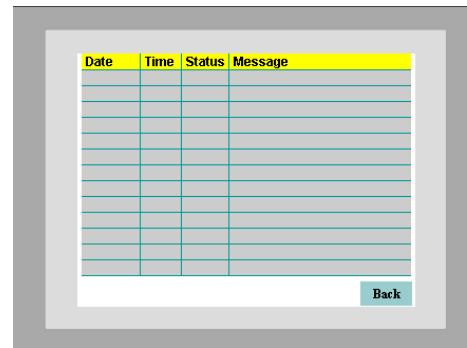


5.3.14 ALARM LOG

The Alarm Log Screen stores and displays the following information on TCS alarms.

Date
 Time
 Status A = Alarm, C = Cleared
 Message Type of Alarm

The newest 13alarm messages are kept in memory until power is removed from the controller. This is a rolling list.



5.3.15 PASSWORD OPERATION

The DAK is password protected. A password screen is used to control the active change authorization level of the DAK. Each password can be up to 8 digits. There are three security levels within the DAK. The Password Button will not show on the Main Screen #2 unless password security level 8 is active.

Display Only Default level
 Operator Needed to change values
 Supervisor Needed to change passwords.

The Display level has no password associated with it. The Operator level has levels 5 through 7 associated with it. Supervisor level is level 8. Everyone has some access to the DAK. All current values can be looked at by anyone.

Default Operator passwords are:

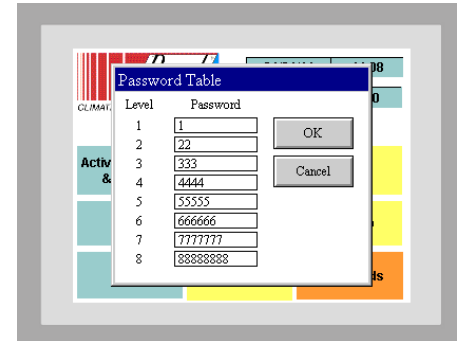
Level 5 55555
 Level 6 666666
 Level 7 7777777
 Level 8 88888888

5.3.15.1 *Entering Password*

To change a password you must be logged in as the supervisor. Press the Passwords button to view all passwords. Press the password you want to change and a pop up keypad will appear. Enter the new password with the keypad and press enter. **Password validation times out after 4 minutes.**

5.3.16.2 *Logout Password*

To return the authority level to Display Only, go to the main screen and press logout or wait 4 minutes.



6.0 PC SOFTWARE OPERATION

The TCS24 system can be remotely or directly controlled through a personal computer. Bard supplies a software system, the Telcom ClimateWatch System Software, to communicate with and control the TCS24 controller from a personal computer.

6.1 ClimateWatch System Software Overview

The ClimateWatch system software consists of ASI Expert software and custom TCS24 controller programs and Screens designed to provide easy access to the features of the TCS24 controller.

The software program allows setup of a control file that specifies site names and additional information for remote access. It also creates directories and sets up files for the storage of the trend information. The program is used to dial up, monitor, and control the on-site air conditioners.

It is also used to upload trend information from the sites and store it in a database file to be viewed from Microsoft Access® or Excel. The program is used to display the alarm history for troubleshooting purposes.

6.2 Installation

6.2.1 *HARDWARE REQUIREMENTS*

Personal Computer running Windows XP or higher.

1 MB of Available RAM memory

40 MB of Available Hard disk space

Hayes Compatible modem operating at 9600 Baud capable of direct asynchronous communications with no error checking or data compression. Needed for remote site access to the TCS. A phone line must be connected to the TCS modem and the remote computer modem.

A 25/9 pin female to 9 pin male RS232 cable. Needed for direct connect access to the TCS24 with a Laptop or portable PC. This cable should be connected to the computer serial port to the 9 pin RS-232 Monitor port of the TCS direct digital controller.

2100-543-003

Page 46

6.2.2 SOFTWARE INSTALLATION

1. Start Windows.
2. Insert TCS24 Master Controller Software CD into CD Drive.
3. Follow instructions on the inside cover of the CD to complete setup.

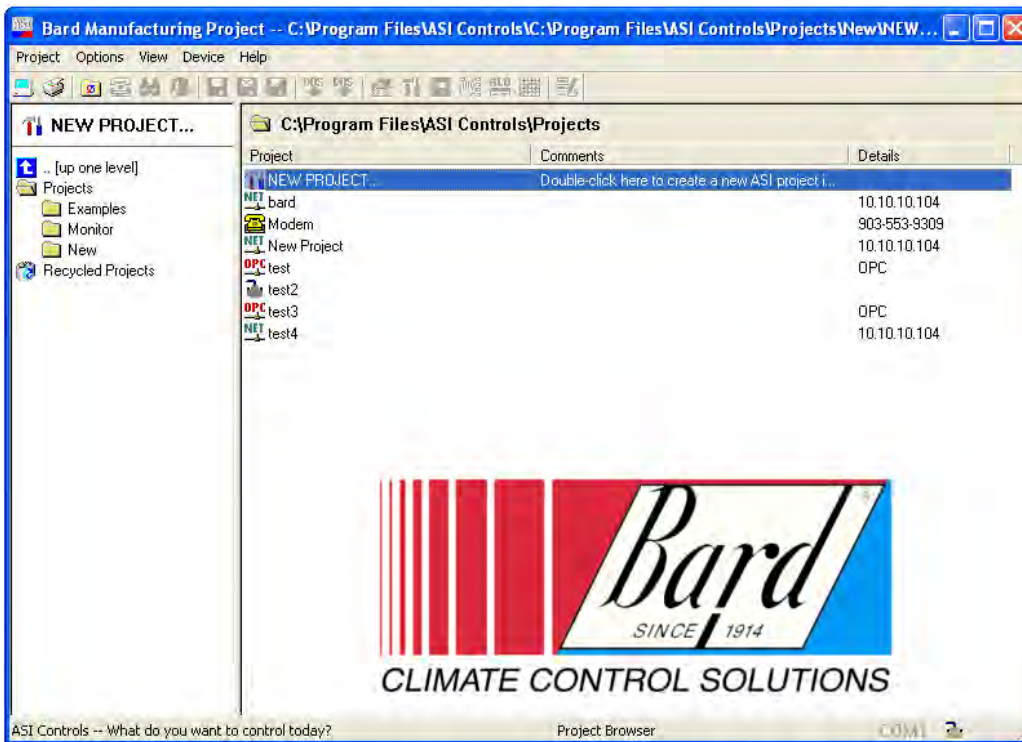
6.3 ASI Expert / Bard ClimateWatch Software

Start the Expert software by double clicking on the Expert icon in the ASI Program Group. The Expert program can be used to communicate remotely or directly with the TCS24 or TCS24 controller.

6.3.1 SCREEN OVERVIEW

The program will begin with the screen shown below. At the top of the initial screen there is a Menu Bar. Below the menu bar is the Tool Bar. The status bar is at the very bottom of the screen. The left side of the screen displays the Project Folders and the right side is the Controller Information Area.

Expert uses projects to group information about different TCS controllers. Each site or building should have its own project. The project can be named the same as the building for convenience.



6.3.1.1 Menu Bar

The menu bar contains five drop down menus: Project, Options, View, Device, Help.

The Project menu allows you to open, close, save and create projects. It also contains a Quick Launch item that remembers the last four projects that were accessed. The Project menu also contains the Print Setup and Print items. The Controller Information Area can be printed at any time by using the Print item on this menu. Clicking the Exit item will close the program.

The Options menu contains system options, dial out and hang up items. System options include baud rate and serial port selection for dial out sites and other advanced system options.

The View menu allows the tool bar and stats bar to be turned on and off and user preferences to be changed. User preferences include default project directory and modem options.

The Device menu allows device configurations to be saved and loaded for each specific site. Configuration reports can be created and saved for later viewing or printing.

The Help menu gives access to the ASI Expert User's Guide. Software revision information and hard drive serial number information is also found in this menu.

6.3.1.2 Tool Bar

The Tool Bar provides an easy way to access many of the most frequently used menu items. Functions that are not available are grayed out. A list of the available functions in order of appearance and their corresponding menu item or function follows.



System Options	Options / System Options
Print Screen	Projects / Print
Project Browser	Returns Screen to Projects View
Dial Out	Options / Dial out
Net Search	View / Net Search – Not Used
Project Reports	Allows Viewing of Custom Designed Reports
Save Device Archive	Device / Save
Save As Device Archive	Device / Save As
Load Device Archive	Device / Load
Export to SETSYS	Not used
Import to SETSYS	Not used
Project Home	Returns Screen to Initial Project Screen
Configure Device	View / Configuration
Generate Report	Device / Report
Handle View	Not used
Allocation View	Not used
Auto Trend	Not used
Edit Layout	Not used

6.3.1.3 Status Bar

The status bar at the bottom of the display indicates uploads of information (yellow moving bar), communications errors (flashing red), modem status (“Modem” displayed), and user errors.

6.3.1.4 Controller Information Area

This area will contain information down loaded from the TCS24 once connected to the controller. Eleven different custom designed TCS controller information screens are available to view, download, and upload all needed information to and from the controller.

6.3.1.5 Project Folders

The project folder area of the screen lets you create a different folder for each site. The controller configuration including set points, options, phone numbers, etc. are stored in this folder. Trend data can also be stored in this folder for future evaluation. Once a project folder has been created for a site, set points, options, phone numbers, etc. can be updated and saved. This creates a backup configuration in case of hardware failure.

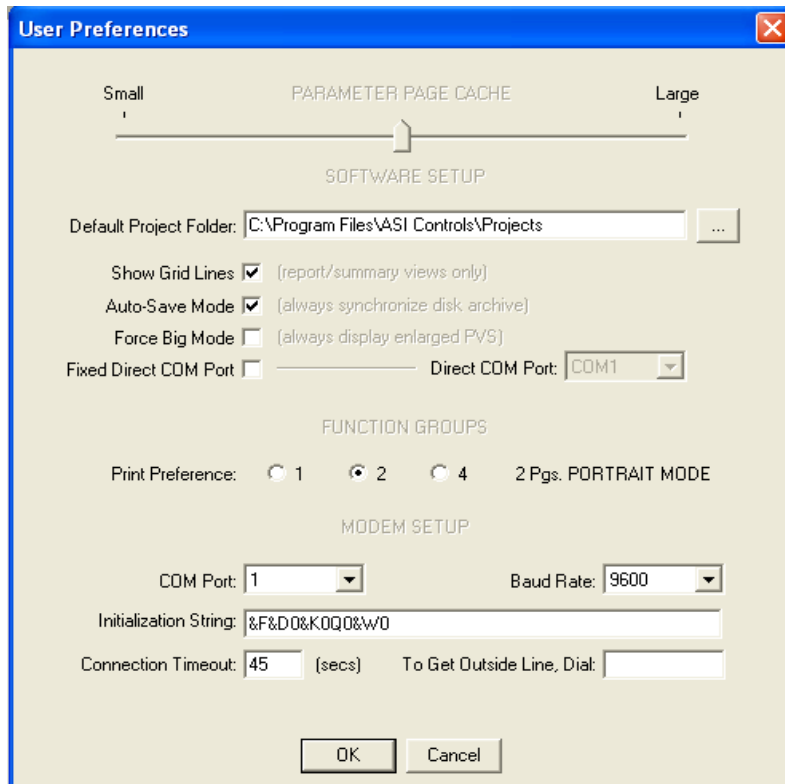
6.3.2 TCS COMMUNICATIONS

Communications with the TCS panel can be established either remotely through a phone connection, Ethernet connection or directly through a computer cable connection.

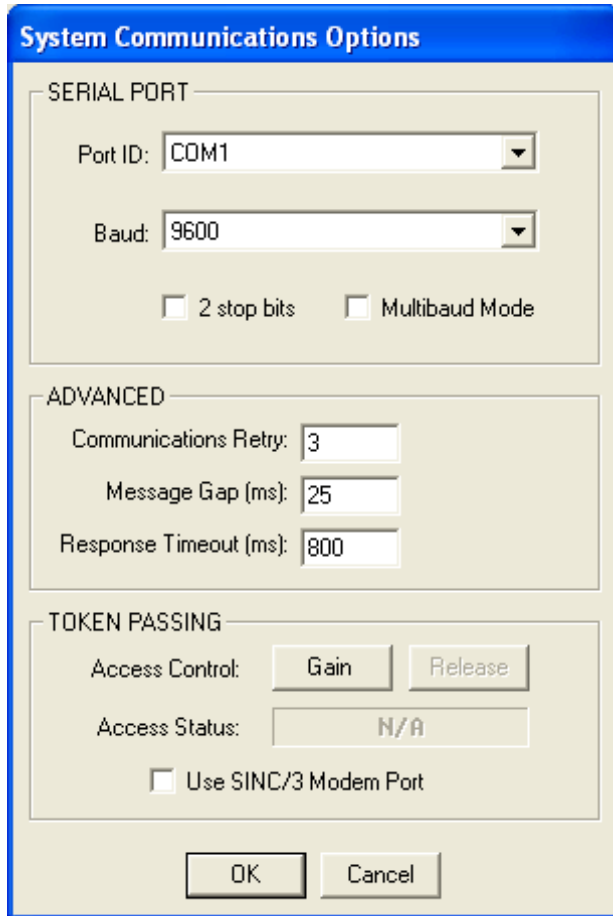
6.3.2.1 Software Setup

The communication ports and baud rates must be configured to allow communications with the controller. Settings must be set for both remote and direct communication modes if they are to be used.

To configure settings for the modem, start the ASI Expert program and View | Preferences on the menu bar. Under the modem setup portion of the screen, set the baud rate to 9600 Baud. The modem initialization string should be “&F&K0&D0Q0&W0” without the quotes. Set the COM Port to match the COM Port number used by your computer’s modem. The COM port used by the modem can be found by going to Windows Start / Settings / Control Panel / Modems. The COM port used by your modem will be documented here.



To configure settings for the direct communications, start the ASI Expert program and go to Options | System options on the menu bar. Under the baud rate portion of the screen, set the baud rate to 9600 Baud. Set the COM Port to match the COM Port number you are using to connect directly to the controller. Make sure “Use 2 stop bits” is NOT checked. Set response time out to 800.



Communications can now be established with the controller either directly or remotely via a modem. For direct communication, a cable should be connected between the computer Com port specified in the above step and to the 9 pin RS-232 Monitor port of the TCS direct digital controller. The cable end connecting to the TCS must be a 9 pin male connector. The computer end of the cable will depend on the configuration of the computer COM port.

6.3.2.2 Creating a New Project & Establishing Communications

A project must be created for each TCS controller. To create a new project, double click on New ASI Project by the red arrow in the Project Folder portion of the screen. A Create New Project window will appear.

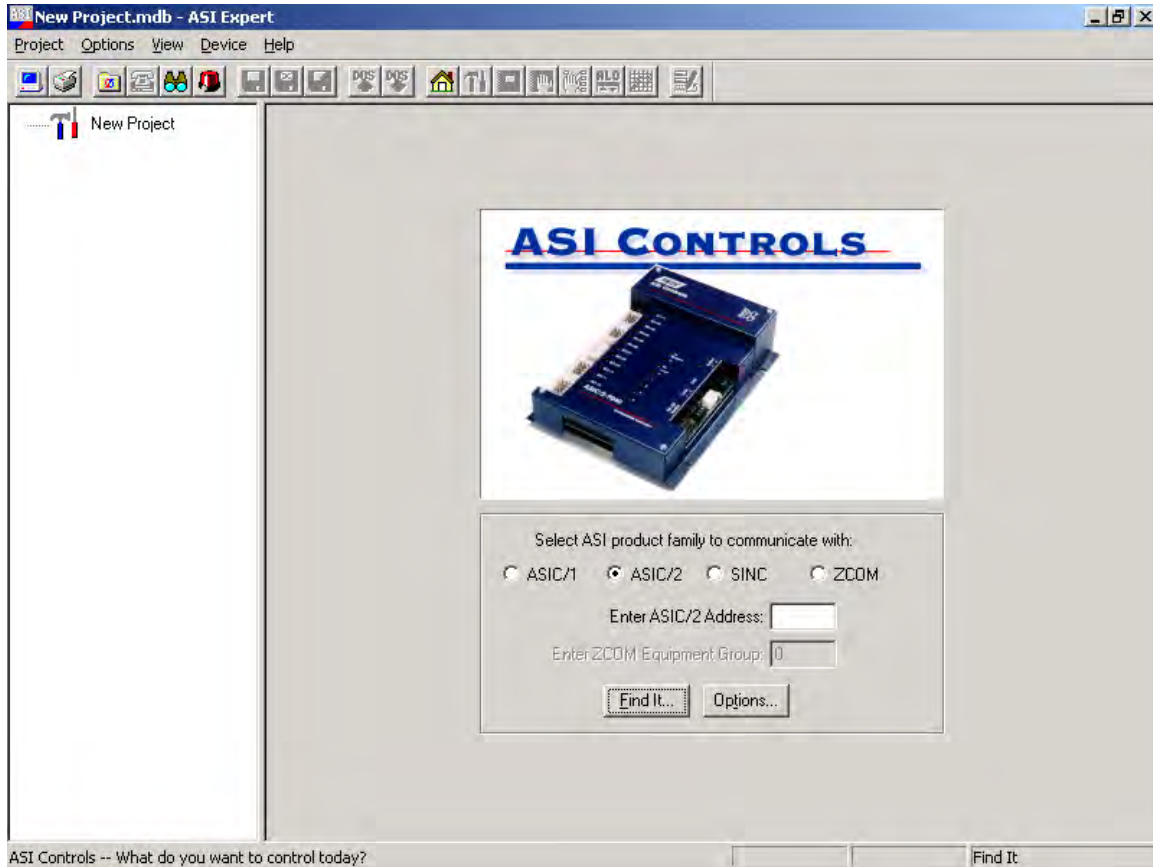
Type a new name for the project. Add any comments about the project. If a short cut is desired on the Windows desktop check the Create Project Shortcut on Windows Desktop box. Check the type of connection you would like to set up. Dial out on network TCP. For direct serial connection, do not check any box; just click OK. A dial out project can also be used to direct connect to the site. Click OK. The Connect to Project Window will appear.

6.3.2.3 Direct Connection

This section deals with directly connecting to the TCS controller via a computer cable. For remote connection information, skip to section 6.3.2.4.

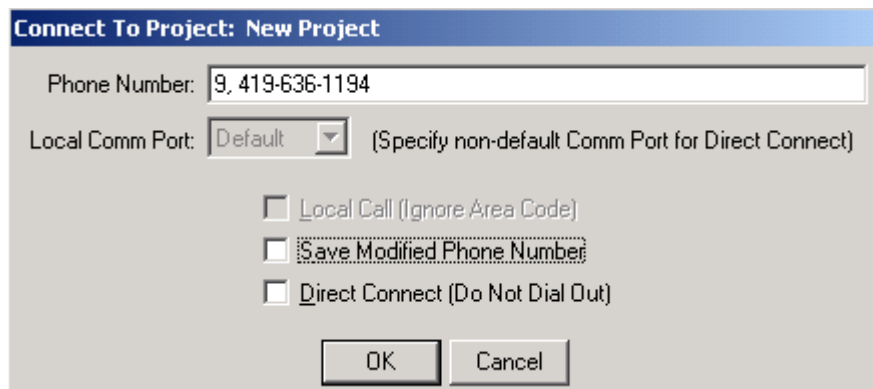
For direct connection to the TCS controller, check the direct connect check box and then click OK.

The Find It screen will appear. Make sure the ASIC/2 button is checked. Click the Find It button to establish communications with the controller. Go to section 6.3.2.5 Downloading Controller Information.

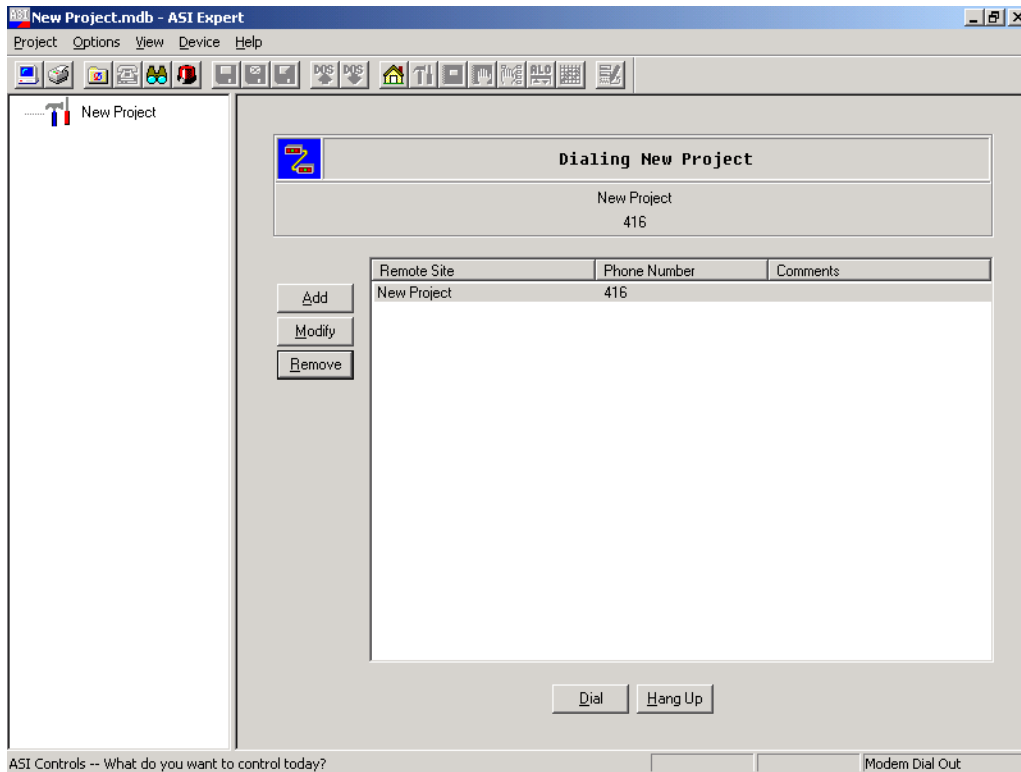


6.3.2.4 Remote *Modem* Connection

For remote connection to the TCS controller type in the phone number of the site including any dialing prefixes. If the phone number is to be saved in the project folder click the Save Modified Phone Number check box. Clicking OK will dial the phone number.



The Dialing Screen will appear and the phone number will be dialed.



Once the modems have connected the window will change to the Find It screen. Make sure the ASIC/2 button is checked. Click the Find It button to establish communications with the controller.

6.3.2.4 Remote *Ethernet* Connection

Connecting with Internet Explorer

You will need to initially configure the EtherLink/2 for your specific IP address and serial port parameters. If you know the IP address then you can change the parameters by connecting to the EtherLink/2 using Internet Explorer.

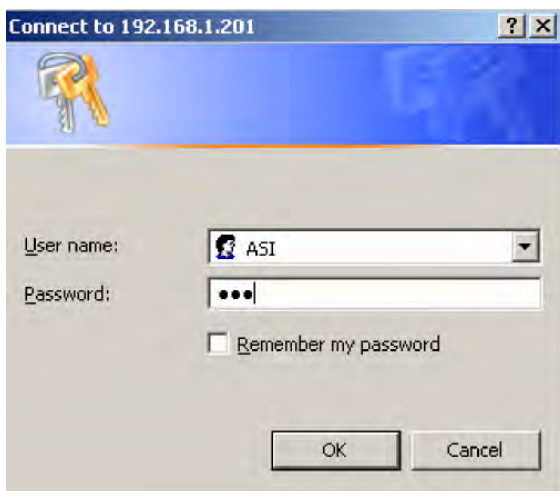
Once you have established an IP address for the EtherLink/2 you may do your entire configuration by connecting with Internet Explorer.

The EtherLink/2 is shipped with Default IP Address: 192.168.1.201. If it does not answer to that address, then you must communicate with the device as described below in Verify/Change Setup (RS-232). See Pages 58-59.

Downloading Controller Information



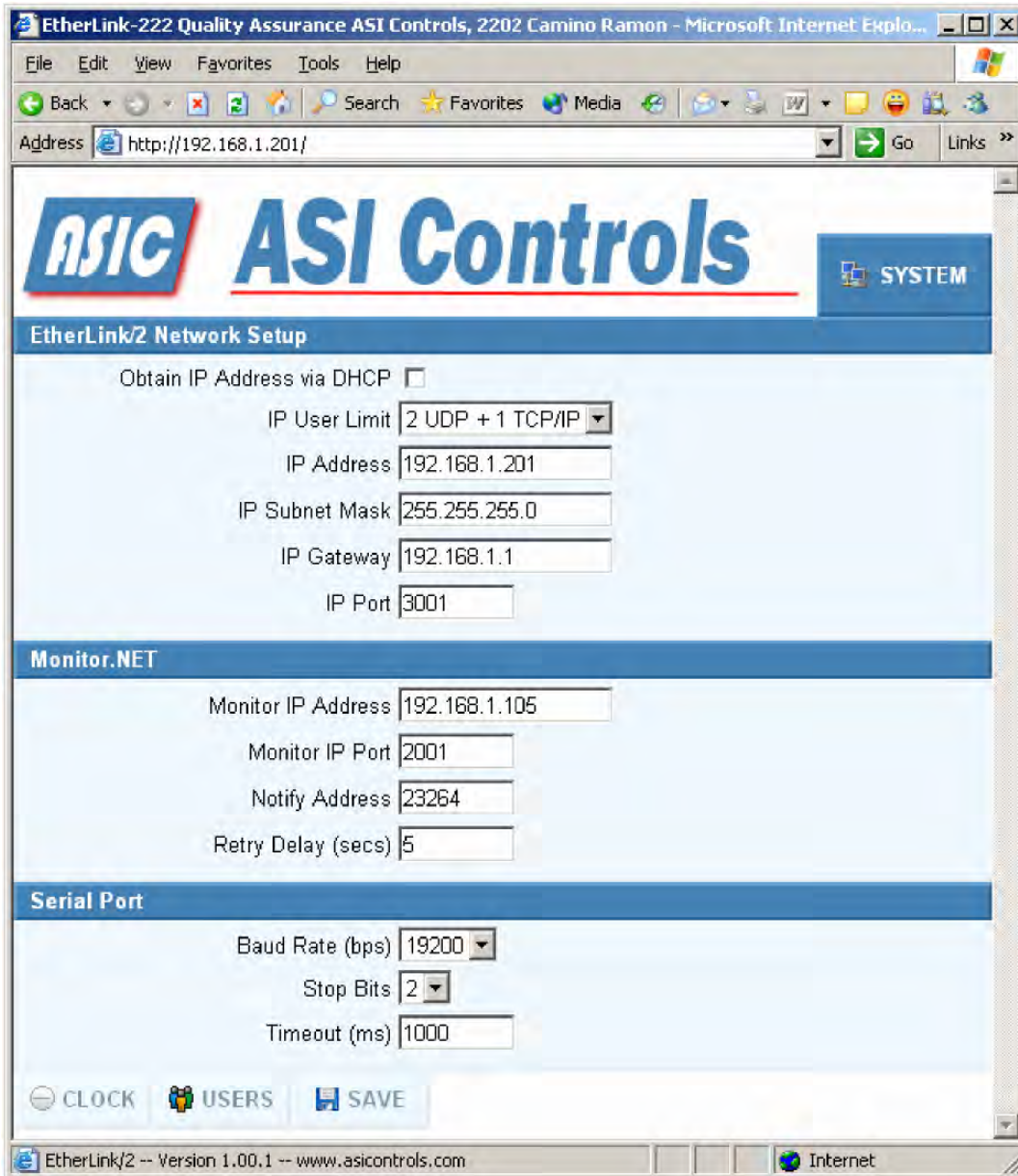
You will be asked to login. The default user/passwords are ASI/ASI and asi/asi. You may change these once you have connected.



EtherLink/2 System Configuration

The configuration consists of the Network Setup and the Serial Port parameters. Typical parameters are shown.

You must save any changes before changing to another screen.

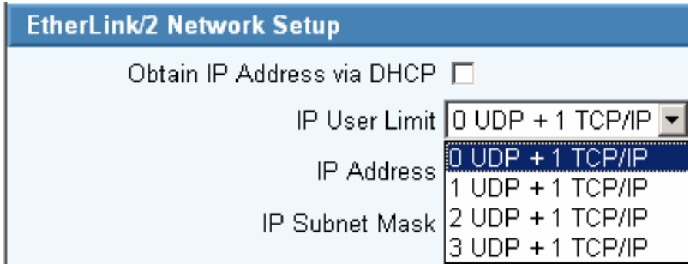


IP Addresses

Do not let the DHCP server assign IP addresses except temporarily during initial network configuration. The remote client software must connect to the EtherLink/2 to a specific IP address. You need to assign IP Address, Subnet Mask, Gateway and Port consistent with your Local Area Network.

IP User Limit

The EtherLink2 supports 1 TCP/IP Connection and up to 3 simultaneous UDP connections based on the IP User Limit setting. You may limit the number of simultaneous UDP connections by setting the IP User Limit.



The TCP/IP connection is required by the ASI OPC server. The first UDP connection is usually used by ASI Expert for system testing and maintenance. If there are any UDP connections, the TCP/IP connection gets every other turn to send messages on the serial communication bus..

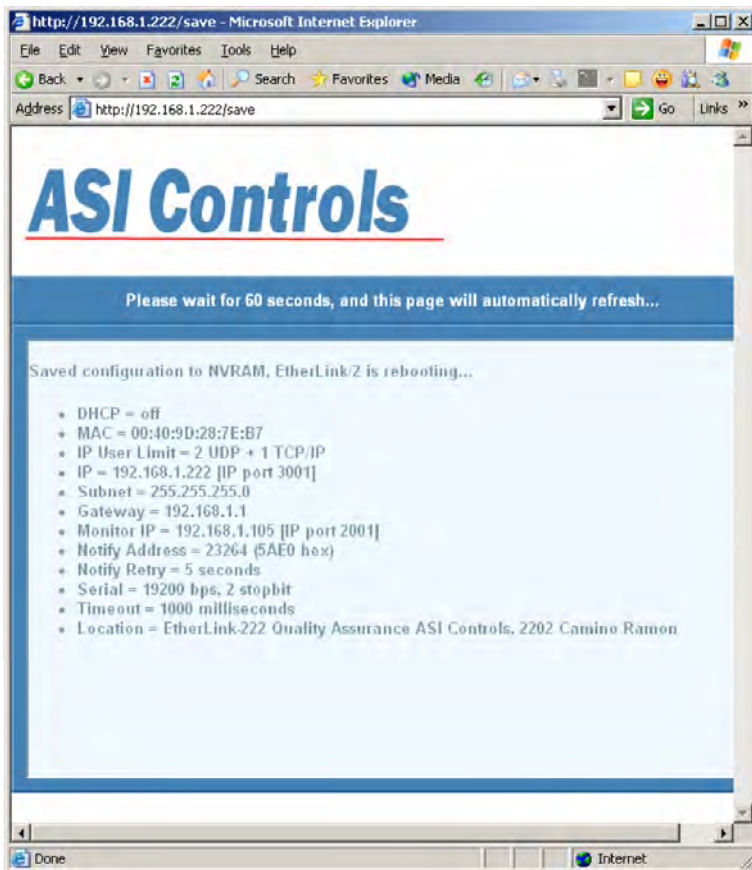
The UDP connections take turns with the remaining bandwidth. This can slow down communications and generate occasional COM errors for the UDP connections.

Serial Port

You must specify the Baud Rate (default 9600), Stop bits [Default 2] and timeout delay (default 1000) for the ASI serial bus. The controller must have the same settings.

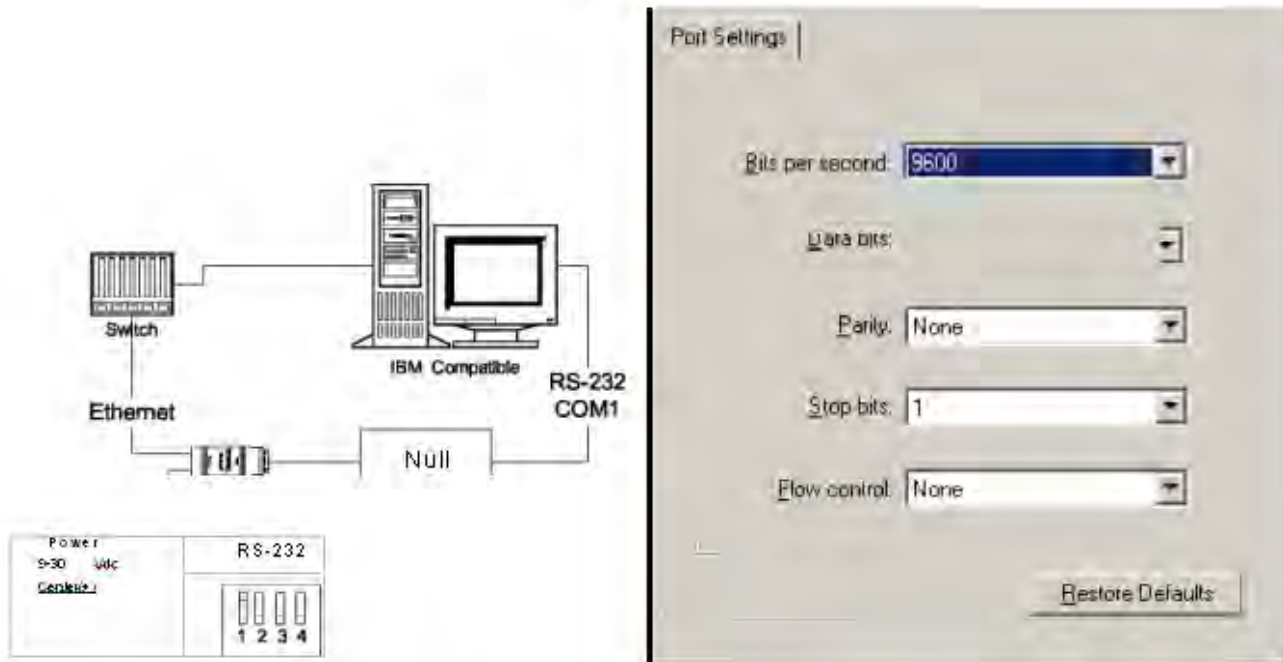
Save

When Save is selected, the current values of the configuration parameters on that screen are saved in non-volatile memory in the Etherlink/2. And a summary page is displayed



Verify/Change Setup (RS-232)

You will need to initially configure the EtherLink/2 for your specific IP address and serial port parameters. Once you have the IP address configured for your network, you can change the parameters by connecting to the EtherLink/2 using Internet Explorer.



- 1) Connect ASI EtherLink/2 to Power
- 2) Set DIP switches SW-1=ON, SW-2,3,4=OFF
- 3) Connect RS-232 (typically COM1) through Null Modem (Female-Female) to EtherLink/2 Serial DB9
- 4) Run HyperTerminal and Connect [as configured]

Port: COM1, Data bits 8 Parity: None;
Baud: 9600; Stop bits: 2; Flow Control: None!

- 5) Press the reset pin on the EtherLink/2 It should return the status of the Device. The reset pin is located in the hole just above the dip switches on the back of the unit.

EtherLink/2 -- Version 1.00.0 -- Configurable Network Interface
Copyright (c) 2005, ASI Controls, Inc.

```
Location = ASI Controls, 2202 Camino Ramon, San Ramon, CA 94583
DHCP = off
MAC = 00:40:9D:28:7E:B7
IP = 192.168.1.201 [ IP port 3001]
Subnet = 255.255.255.0
Gateway = 192.168.1.1
Monitor IP = 0.0.0.0 [ IP port 2001]
Notify Address = 23264 (5AE0 hex)
Notify Retry = 5 seconds
Serial = 9600 bps, 2 stopbit
Timeout = 1000 milliseconds
```

Press any key in 15 seconds to change these settings.

6) To Change settings

Press A to Accept the settings, or M to Modify? m Enter the root password: ***** [Netsilicon] For each of the following questions, you can press <Return> to select the value shown in braces, or you can enter a new value.

Do NOT change the MAC Address!

Wait 60 seconds for device to reboot to accept changes.

ASI Expert

ASI Expert is a secondary connection to ASI Network and supports either direct TCP/IP or UDP connections to an EtherLink/2. If the ASI OPC server is connected an EtherLink/2 over a TCP/IP connection, then Expert must use the UDP connection in order to gain secondary access to the project. When using UDP, Multiple Expert users can connect to the same EtherLink/2 from different computers and share access to networked ASI devices.

Project Properties

Project Name: Etherlink2

Comments:

Create Project Shortcut on Windows Desktop

Project Connection Options

Token Passing Network_TCP/IP

Modem Dial Out Network_UDP/IP

Direct Comm: DEFAULT

Phone Number:

Network Host: 192.168.1.201:3001

ASI OPC Server Connection

OPC Link

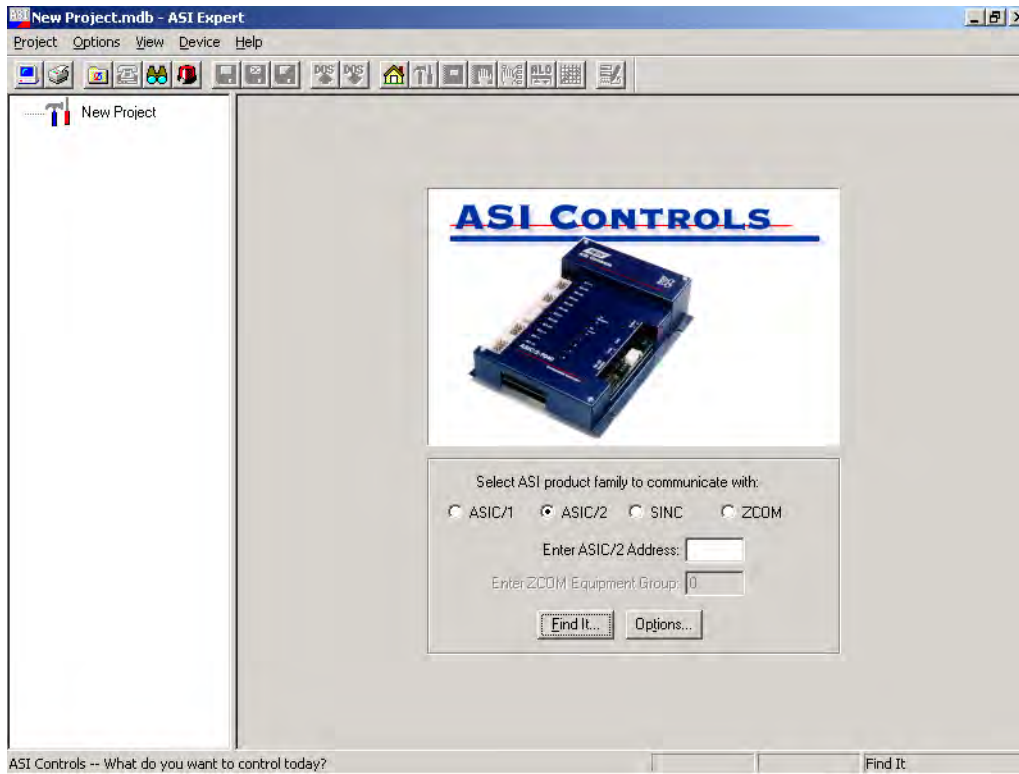
Changing direct comm port overrides setting for all project devices

OK Cancel

NET Network Connection (Ethernet)

Network Host: 192.168.1.201 : 3001 UDP/IP

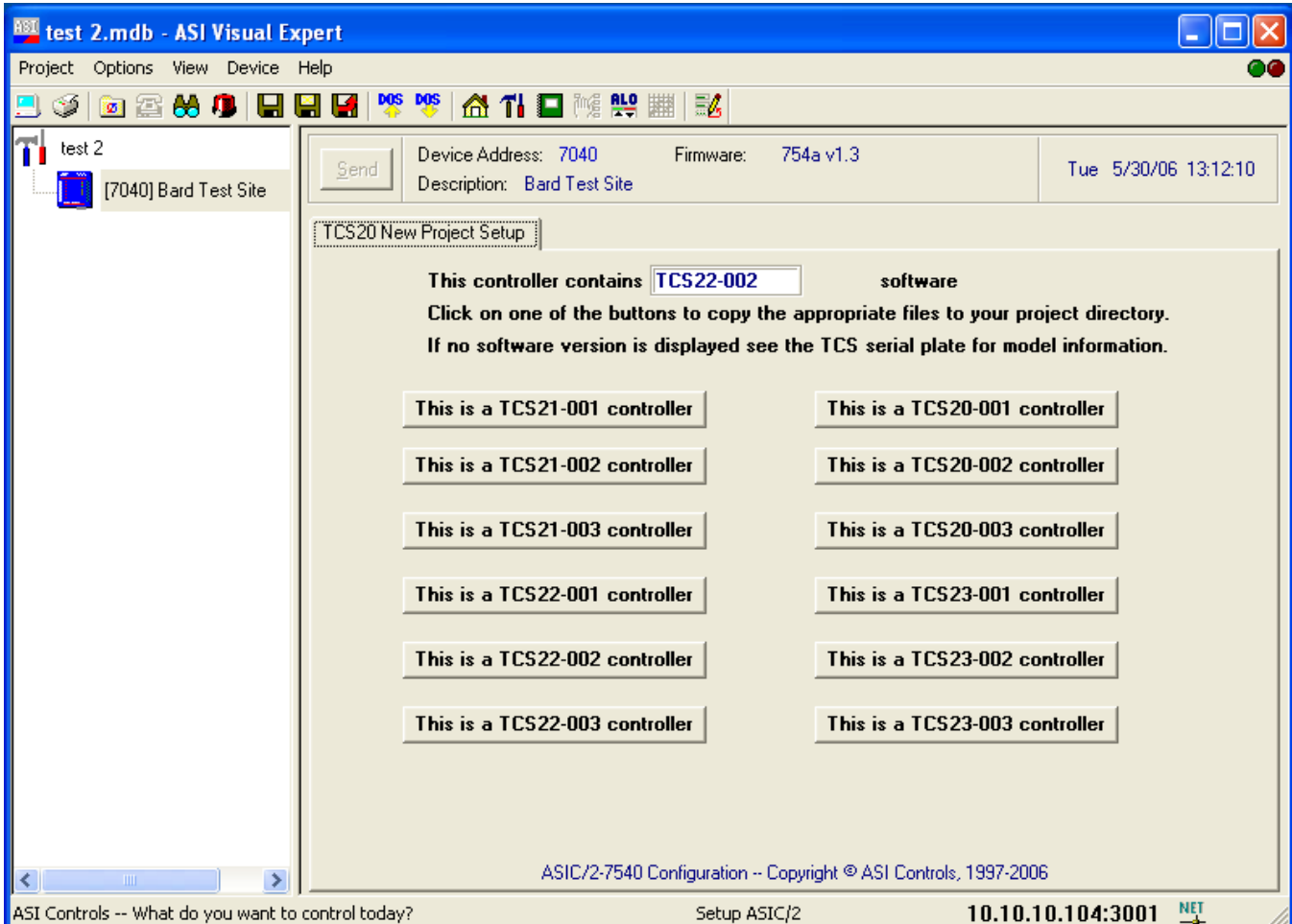
6.3.2.6 Downloading Controller Information



The ASIC/2-7040 Device Profile window will appear. If communications have been established the status bar at the bottom of the window will show “ASIC/2-7040 Online...”. If the status bar is flashing red, communication has not been established. Check COM port settings and troubleshooting section.

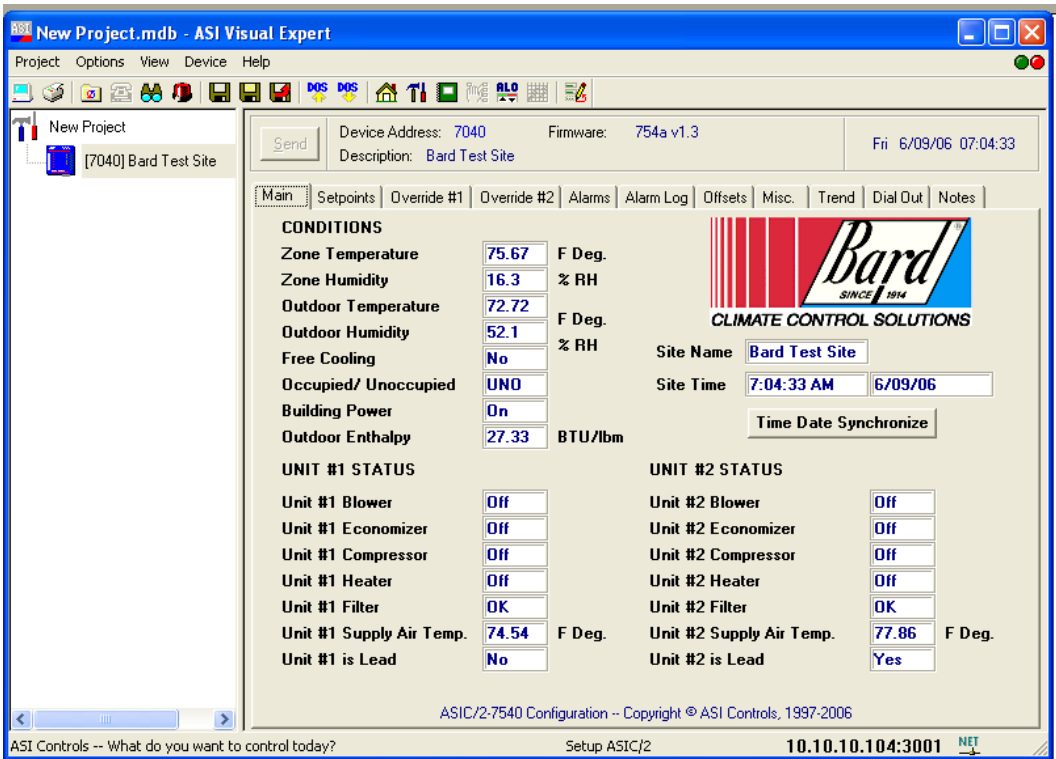


Clicking OK will start the downloading of data from the controller to the computer. Once the preliminary information has been downloaded the TCS New project setup Screen will appear in the Controller information area of the screen. The TCS software version will be displayed for all TCS24 and TCS23 models. Both The TCS24 and the TCS23 use the TCS23 Software. The difference between the TCS23 and the TCS24 is the display. The software in the controller remains the same. Nothing will be displayed for TCS22 models. For TCS22 or earlier models refer to the serial plate inside the front cover to determine the software version that is installed. The last three numbers of the model number indicate the software version.

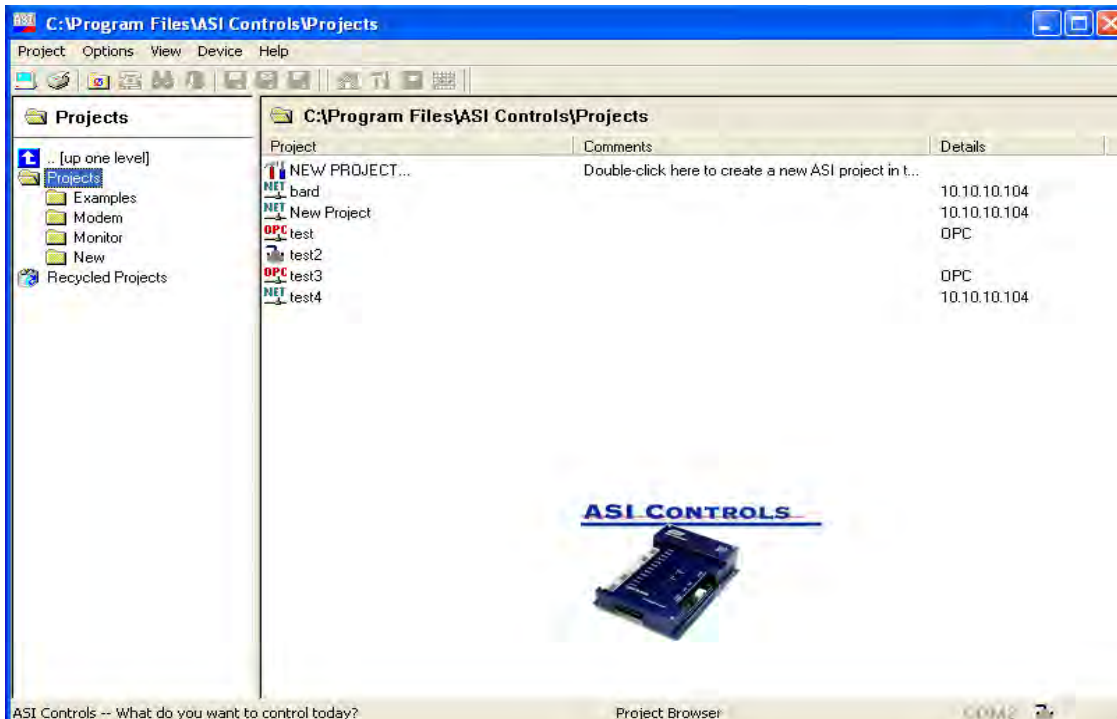


Click on the appropriate button to create the new project folder and copy needed files to this folder. Once the files have been copied the Main Screen Tab screen will be displayed and live data will be shown on the Main screen. At this point it is a good idea to save the project. Click Project | Save on the menu bar.

NOTE: For TCS24 Controller, use the appropriate TCS23 button.



Now that a project has been created for a site it will appear under the projects folder section of the display. Once the project is created and saved it can be accessed by double clicking on the project name under the projects folder.



6.3.2.7 Saving TCS Configuration

While saving project information saves computer settings, site names and controller type information it does not save information specific to each individual controller. A project may have more than one TCS controller and each controller can have its own configuration, setpoints, etc. Individual controller information is saved by creating a device archive. A device archive uploads all information from the TCS controller and stores it in a file. This file includes the controller configuration and setpoints.

After all setpoints and options are changed to the desired configuration, click on the Save Device Archive button on the tool bar to save the device archive. All of the controller information will be uploaded from the controller and saved to a file.

If any changes are made to the TCS configuration, you will be asked before exiting if you would like to save the device configuration. If you want to save the changes click OK otherwise click cancel.

6.3.2.8 Loading TCS Configuration.

To reload the device configuration to the setting stored in the device archive click on the load device archive button. The device archive will be downloaded to the controller and all setting will be restored to the setting stored in the device archive.

If a special configuration is to be loaded Click on the load device archive button and use the appropriate button on the load configuration file screen to find the special configuration. Special configuration files are stored on the TCS24 Master Controller Software CD under a folder named for the special project. A text file will also be in this folder detailing the changes made to the special configuration.

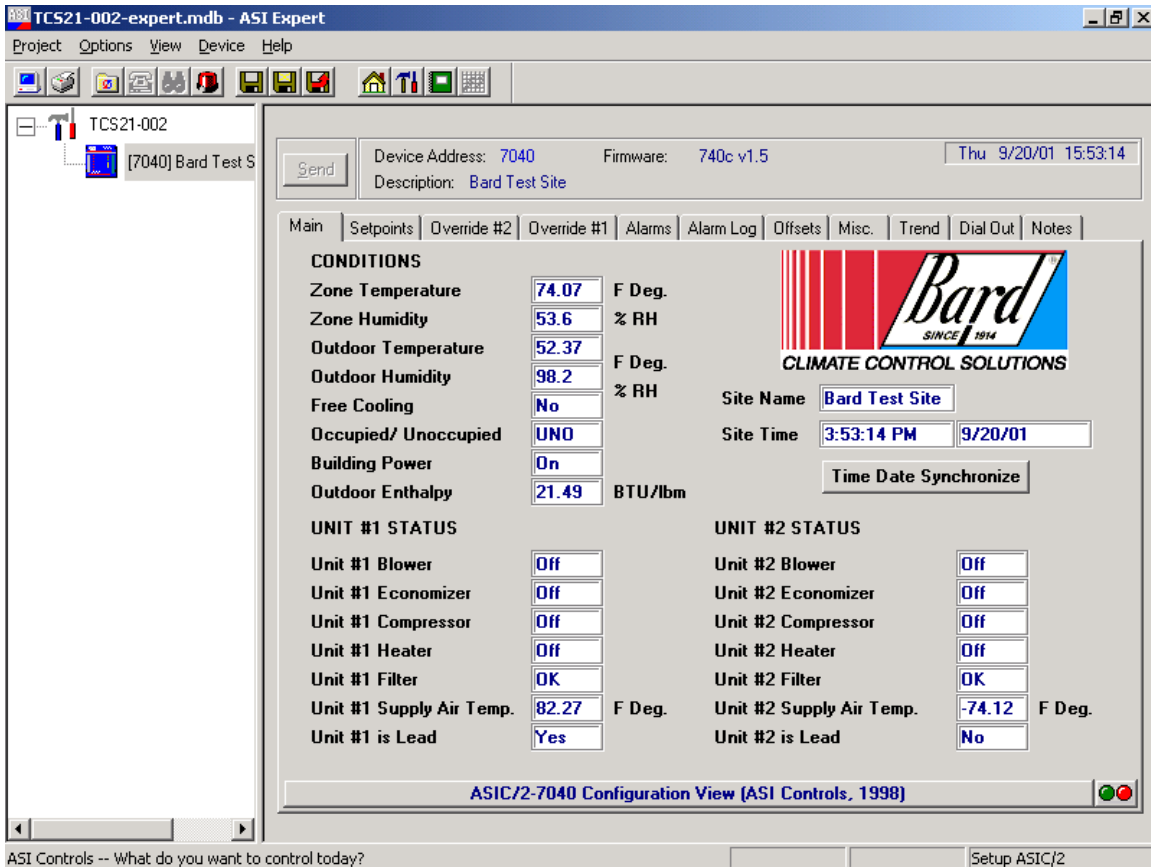
6.4 TCS Controller Information Screens

Each screen displays different related information about the TCS24 and connected air conditioners. There are eleven different information screens. Clicking on the labeled tabs changes displayed screen and data

The eleven screens tabs are:

- Main
- Setpoints
- Override #1
- Override #2
- Alarms
- Alarm Log
- Offsets
- Misc.
- Trend
- IP
- DialOut
- Notes

6.4.1 MAIN SCREEN TAB



6.4.1.1 Conditions

The Zone Temperature is the current Temperature inside the structure. This, and all the other points being monitored on this screen are updated once a second. The Zone Humidity is the Humidity Level inside of the structure. The Outdoor Temperature and Humidity are the current outdoor conditions at the structure being monitored.

The Free Cooling is a Yes or No condition based on an Enthalpy calculation of the Outdoor conditions. This is used to determine if the Economizer can be opened to take advantage of a Free Cooling condition.

When a Technician enters the structure, he/she may decide to press the Occupancy Override button on the front of the TCS24. This changes the active setpoint to that of an Occupied Mode that is set to make conditions in the structure more comfortable for the Technician inside.

The Building Power condition is monitoring the power source to the Controller. This condition will show ON, for utility power, or OFF, for battery or generator backup power if there is a utility power failure.

Outdoor Enthalpy is a calculated point based on outdoor temperature and humidity.

6.4.1.2 Unit #1 Status

The Blower status will show if Blower operation is On or Off.

The Filter status will show if the Filter is OK or Dirty.

The Economizer will show if Economizer operation is On or Off.

The Compressor status will show if the Compressor is On or Off.

The Heater status will show the status of the Electric Heat Strip, either On or Off.

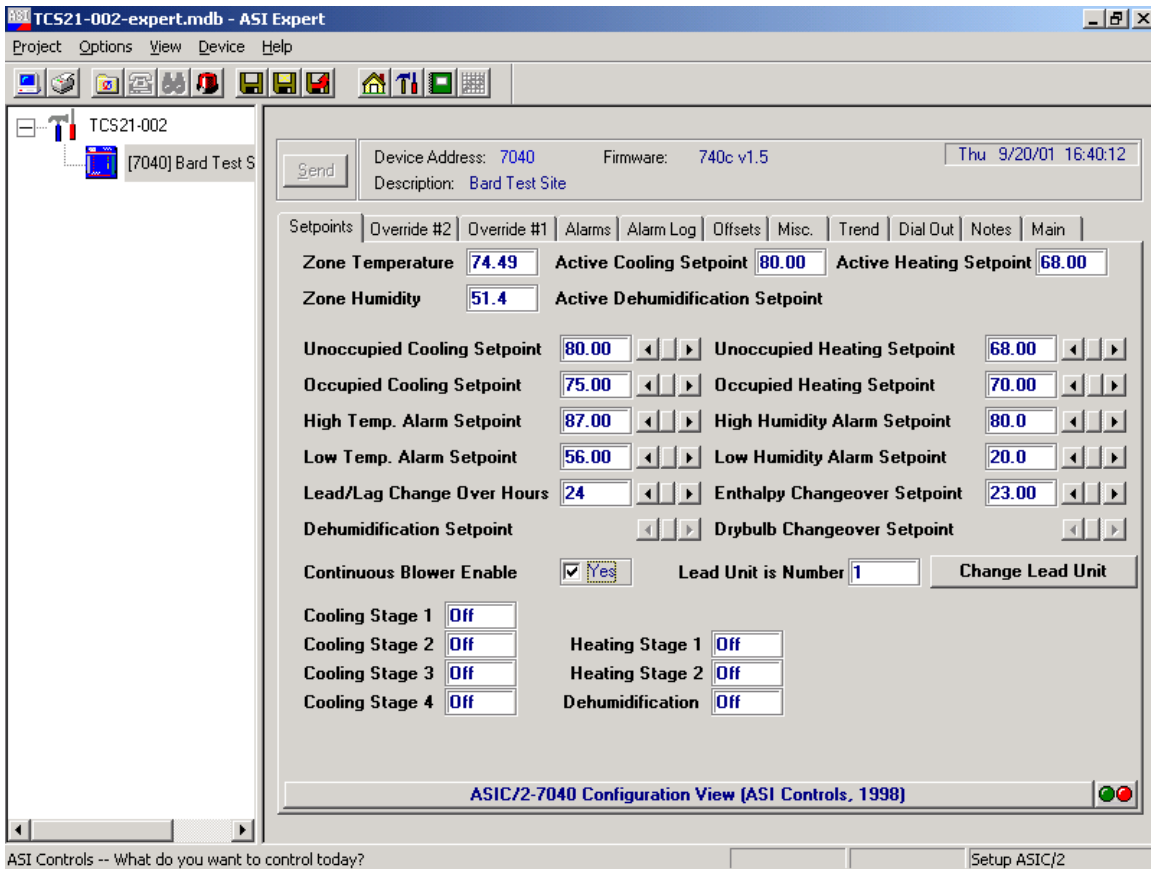
The Supply Air Temperature is the temperature of the Air leaving the unit. This temperature will be Cooler than Zone Temperature when the unit is in the Cooling Mode, and Warmer the Zone Temperature when the unit is in the Heating Mode.

The Lead/Lag status indicates if the unit is the Lead or the Lag unit. The Lead unit is the Primary conditioning unit for the structure. The Lag unit will be the Secondary conditioning unit for the structure

6.4.1.3 Time & Place

The site name that is stored in the controller is displayed and can be changed by clicking on the name. Site Time and Date are the time and date in the TCS controller. Click the Time Date Synchronize button to set the controller time and date to the current time and date of the computer communicating with the controller.

6.4.2 SET POINT TAB



The Setpoint screen will allow the user to adjust the Occupied Heating and Cooling, Unoccupied Heating and Cooling, High and Low, Temperature and Humidity Alarm Setpoints. The Lead/Lag Changeover hours and the Enthalpy or Dry Bulb Changeover Setpoints can be adjusted from this screen. Dehumidification setpoint is also changed from this screen. The Continuous Blower may be Enabled or Disabled from this screen. The lead unit can be changed from this screen. Active cooling, heating, and dehumidification stages can be monitored.

6.4.2.1 Occupied Cooling Setpoint

The Occupied Cooling Setpoint is used to lower the cooling setpoint to a lower temperature if the structure is occupied. The Occupied Cooling Setpoint will be the active setpoint if the occupancy override timer has been triggered and if the zone temperature is above the Occupied Cooling Setpoint. Once the occupied timer is started the Occupied Cooling Setpoint will be active for two (2) Hours and then will reset to the Unoccupied Cooling Setpoint. Occupancy override can be canceled after 5 minutes by pressing the occupancy override button again.

Next to the Occupied Cooling Setpoint value is a scroll bar. Clicking on the right arrow will increase the Occupied Cooling Setpoint by 0.50 degrees Fahrenheit until the maximum allowed setpoint of 80.0 Degrees is reached. Clicking on the left arrow will decrease the Occupied Cooling Setpoint by 0.50 degrees Fahrenheit until the minimum allowed setpoint of 72.0 Degrees is reached.

6.4.2.2 Unoccupied Cooling Setpoint

The Unoccupied Cooling Setpoint is the default cooling setpoint for a normally unoccupied structure. Cooling of the Structure will begin if the zone temperature is above this setpoint.

The Unoccupied Cooling Setpoint will be the active setpoint whenever the occupied override has not been started. The Unoccupied Cooling Setpoint may be adjusted by clicking the right or left arrows next to the Unoccupied Cooling Setpoint Text box. Clicking on the right arrow will increase the Unoccupied Cooling Setpoint by 0.50 degrees Fahrenheit until the maximum allowed setpoint of 85.0 degrees is reached. Clicking on the left arrow will decrease the Unoccupied Cooling Setpoint by 0.50 degrees Fahrenheit until the minimum allowed setpoint of 72.0 degrees is reached.

6.4.2.3 Occupied Heating Setpoint

The Occupied Heating Setpoint is used to raise the heating setpoint to a higher temperature if the structure is occupied. The Occupied Heating Setpoint will be the active setpoint if the occupancy override timer has been triggered and if the zone temperature is below the Occupied Heating Setpoint. Once the occupied timer is started the Occupied Heating Setpoint will be active for two (2) Hours and then will reset to the Unoccupied Heating Setpoint. Occupancy override can be canceled after 5 minutes by pressing the occupancy override button again.

Next to the Occupied Heating Setpoint value is a scroll bar. Clicking on the right arrow will increase the Occupied Heating Setpoint by 0.50 degrees Fahrenheit until the maximum allowed setpoint of 70.0 degrees is reached. Clicking on the left arrow will decrease the Occupied Heating Setpoint by 0.50 degrees Fahrenheit until the minimum allowed setpoint of 68.0 degrees is reached.

6.4.2.4 Unoccupied Heating Setpoint

The Unoccupied Heating Setpoint is the default heating setpoint for a normally unoccupied structure. Heating of the structure will begin if the zone temperature is below this setpoint.

The Unoccupied Heating Setpoint will be the active setpoint whenever the Occupied Override has not been started. The Unoccupied Heating Setpoint may be adjusted by clicking the right or left arrows next to the Unoccupied Heating Setpoint text box. Clicking on the right arrow will increase the Unoccupied Heating Setpoint by 0.50 degrees Fahrenheit until the maximum allowed setpoint of 70.0 Degrees is reached. Clicking on the left arrow will decrease the Unoccupied Heating Setpoint by 0.50 degrees Fahrenheit until the minimum allowed setpoint of 60.0 degrees is reached.

6.4.2.5 High Temperature Alarm Setpoint

The High Alarm Setpoint is the temperature at which the high temperature alarm will trigger for the structure. If the zone temperature of the structure exceeds the High Alarm Setpoint then an alarm event is logged in the alarm log and a shelter alarm is generated.

Next to the High Temperature Alarm value is a scroll bar. Clicking on the right arrow will increase the High Temperature Alarm Setpoint by 0.50 degrees Fahrenheit until the maximum allowed setpoint of 100.0 degrees is reached. Clicking on the left arrow will decrease the High Temperature Alarm Setpoint by 0.50 degrees Fahrenheit until the minimum allowed setpoint of 80.0 degrees is reached.

6.4.2.6 Low Temperature Alarm Setpoint

The Low Alarm Setpoint is the temperature at which the low temperature alarm will trigger for the Structure. If the zone temperature of the structure is below the Low Alarm Setpoint then an alarm event is logged in the alarm log and a shelter alarm is generated.

Next to the Low Temperature Alarm value is a scroll bar. Clicking on the right arrow will increase the Low Temperature Alarm Setpoint by 0.50 degrees Fahrenheit until the maximum allowed setpoint of 67.0 degrees is reached. Clicking on the left arrow will decrease the Low Temperature Alarm Setpoint by 0.50 degrees Fahrenheit until the minimum allowed Setpoint of 45.0 degrees is reached.

6.4.2.7 High Humidity Alarm Setpoint

The High Humidity Setpoint is the humidity level at which a high humidity alarm will trigger for the structure. If the zone humidity of the structure exceeds the High Humidity Setpoint then an alarm event is logged in the alarm log and a shelter alarm is generated.

Next to the High Humidity Alarm value is a scroll bar. Clicking on the right arrow will increase the High Humidity Alarm Setpoint by 1 percent relative humidity until the maximum allowed setpoint of 85% RH is reached. Clicking on the Left arrow will decrease the High Humidity Alarm Setpoint by 1 percent relative humidity until the minimum allowed setpoint of 55% RH is reached.

6.4.2.8 Low Humidity Alarm Setpoint

The Low Humidity Setpoint is the humidity level at which a Low humidity alarm will trigger for the structure. If the zone humidity of the structure is below the Low Humidity Setpoint then an alarm event is logged in the alarm log and a shelter alarm is generated.

Next to the Low Humidity Alarm value is a scroll bar. Clicking on the Right Arrow will increase the Low Humidity Alarm Setpoint by 1 percent relative humidity until the maximum allowed setpoint of 35% RH is reached. Clicking on the Left arrow will decrease the Low Humidity Alarm Setpoint by 1 percent relative humidity until the minimum allowed setpoint of 5% RH is reached.

6.4.2.9 Enthalpy Changeover Setpoint

The Enthalpy Setpoint is used to determine if the outside air is suitable to use for cooling the structure. The default value for this point is 23.00 BTU/ lb. of dry air. Consult the enthalpy lookup table to adjust this value for the specific conditions that you wish to maintain in the structure. Read down the relative humidity column under the percentage RH you wish to maintain. Read across the inside temperature row to where it intersects the RH column. Enter this value into the Enthalpy Setpoint Display. This will ensure that economizer will never bring in outside air that is too humid.

Next to the enthalpy value is a scroll bar. Clicking on the Right Arrow will increase the Enthalpy Setpoint by .25 BTU / lb. until the Maximum allowed Setpoint of 60 BTU / lb. is reached. Clicking on the Left arrow will decrease the Enthalpy Setpoint by .25 BTU / lb. until the Minimum allowed Setpoint of 5 BTU / lb. is reached.

This setpoint may or may not be active and visible depending on the economizer changeover scheme chosen in the Misc. tab.

6.4.2.10 *Dry Bulb Changeover Setpoint*

The dry bulb Setpoint is used to determine if the outside air is suitable to use for cooling the structure. The default value for this point is 48 F°. This will ensure that the economizer will never bring in outside air that is too warm to provide cooling.

Next to the dry bulb Changeover Setpoint value is a scroll bar. Clicking on the Right Arrow will increase the Enthalpy Setpoint by 1.0 degree until the maximum allowed Setpoint of 80 degrees is reached. Clicking on the Left arrow will decrease the dry bulb Changeover Setpoint by 1.0 degree until the minimum allowed setpoint of 40 degrees is reached. This setpoint may or may not be active and visible depending on the economizer changeover scheme chosen in the Misc. tab.

6.4.2.11 *Dehumidification Setpoint*

The dehumidification setpoint requires an authority level of Supervisor or higher to change. Anyone may view the setpoint value. The Dehumidification Setpoint Range is from 50 to 70 % RH. The default value is 50 % RH.

6.4.2.12 *Continuous Blower Enable*

The Continuous Blower Enable will run the lead unit blower continuously for the entire Lead/Lag period. This means that one of the blowers will always be running. The Continuous Blower operation is either set to Yes (with the box checked), or set to No (with the box unchecked).

6.4.2.13 *Lead Unit is Number*

The Lead unit can be changed manually. The current Lead unit is displayed in the textbox next to the “Lead Unit is Number” label. By clicking on the Change Lead Unit button, the Lead unit status will be changed to the other unit, and will be updated in the Textbox.

6.4.2.14 *Active Cooling Setpoint*

The Active Cooling Setpoint displays the current cooling setpoint that the controller using to determine whether cooling is required or not. If the Zone temperature is above the Active Cooling Setpoint, Stage One Cooling will be on.

The Active Cooling Setpoint will be one of three values. If the controller is in occupied mode, the Active Cooling Setpoint will be the same as the Occupied Cooling Setpoint. If the controller is in unoccupied mode, the Active Cooling Setpoint will be the same as the Unoccupied Cooling Setpoint. Occupancy is determined from the After-hours Occupancy Override Button located on the temperature sensor on the front of the TCS24. If the controller is in Dehumidification mode, the Active Cooling Setpoint will be 73° the same as the fixed Dehumidification Cooling Setpoint.

6.4.2.15 *Active Heating Setpoint*

The Active Heating Setpoint displays the current heating setpoint that the controller using to determine whether heating is required or not. If the Zone Temperature is below the Active Heating Setpoint, Stage One Heating will be on.

The Active Heating Setpoint will be one of three values. If the controller is in occupied mode, the Active Heating setpoint will be the same as the Occupied Heating Setpoint. If the controller is in unoccupied mode, the Active Heating Setpoint will be the same as the Unoccupied Heating Setpoint. Occupancy is determined from the After-hours Occupancy Override Button located on the temperature sensor on the front of the TCS24. If the controller is in Dehumidification mode, the Active Heating Setpoint will be 70° the same as the fixed Dehumidification Heating Setpoint.

6.4.2.16 *Change Lead Unit*

The Lead unit can be changed manually. The current Lead unit is displayed in the Textbox next to the “Lead Unit is” label. By clicking on the Change button, the Lead unit status will be changed to the other unit, and will be updated in the Textbox. The lag unit must be free of alarms for the Change button to work.

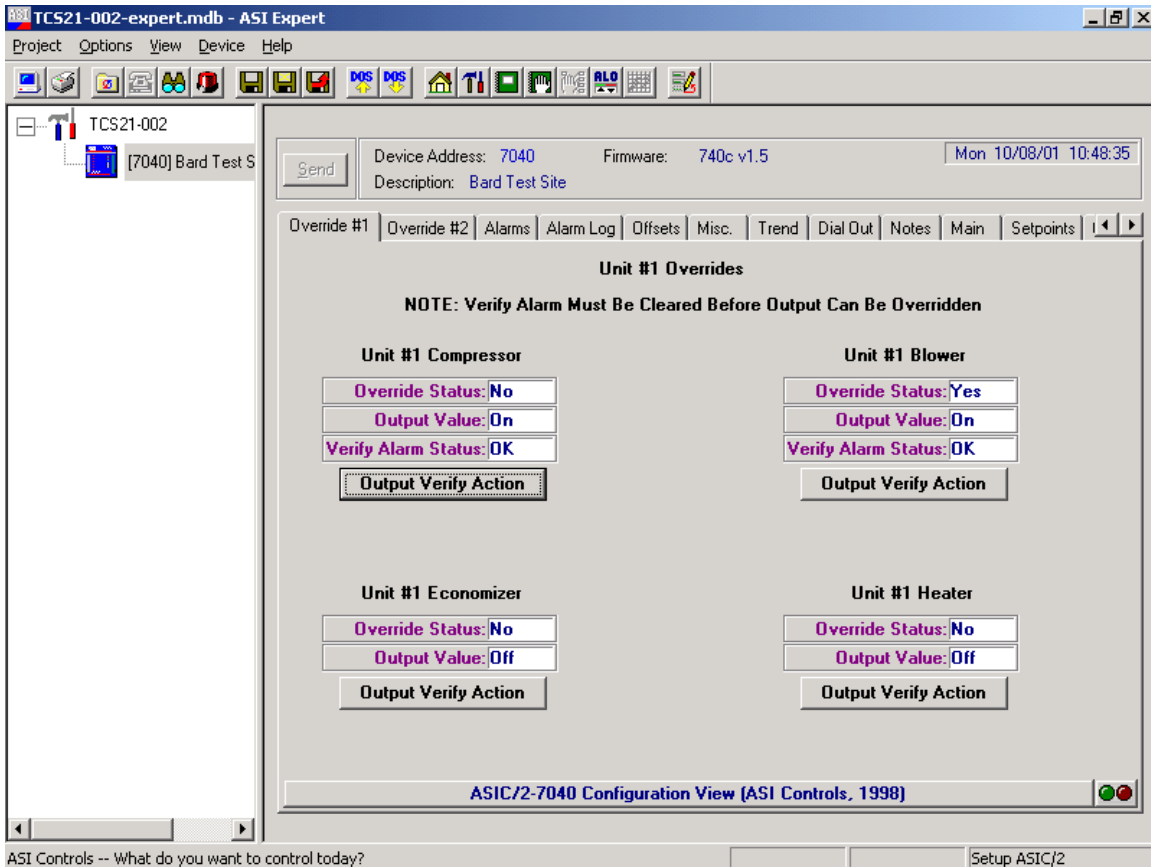
6.4.2.17 *Active Dehumidification Setpoint*

The Active Dehumidification Setpoint displays the current dehumidification setpoint that the controller using to determine whether dehumidification is required or not. If the Zone Humidity is above the Active Dehumidification Setpoint, Stage One Cooling will be on. This point may or may not be active and visible depending on the Enable Zone Dehumidification checkbox condition in the Misc. tab.

6.4.2.18 *Stage Indicators*

The stage indicators at the bottom of the screen are used to indicate which stages of cooling, heating, or dehumidification are energized. These are displayed used for troubleshooting purposes.

6.4.3 OVERRIDE #1 TAB



The Override #1 Tab will switch to the screen containing the override information for the Controller. The Override screen will allow the User to override Blower, Economizer, Compressor, and Heater operation of Unit #1.

There are three (3) possible override modes. The first mode would be Automatic (Auto). This mode allows the operations to be controlled automatically by the controller and is the normal mode of operation.

The second mode would be the Override Off mode. This means that when operation is called for by the controller, the operation has been suspended manually in the Off mode, and cannot operate.

The third mode is the Override On mode. When this mode is selected, the operation is manually set to the On mode. The controller cannot turn the operation Off automatically when in this mode.

All overrides status boxes should read “NO” for normal operation of the controller. Any outputs that have been overridden on or off will remain that way until the output is manually returned to normal operation or until the controller loses power. Any overridden output will have “OVR” displayed next to the output status on the Main Tab screen.

6.4.3.1 Unit #1 Compressor

The override status box displays the current override condition of the Unit #1 Compressor. It will read “Yes” if the output has been overridden on or off.

The output value box displays the current condition of the Unit #1 Compressor. It will read either on or off.

The Verify Alarm Status box displays the current condition of the Unit #1 Compressor verify alarm. It will read either OK or Alarm. If the Verify Alarm Status is alarm the output cannot be overridden on or off until the alarm is cleared. The verify alarm will be logged as a Comp. #1 L/O in the alarm log tab and as a Unit #1 Compressor Alarm, Fault Alarm on the Alarms Tab.

To Clear the Verify Alarm, click the Output Verify Action button. Select “Clear Verify Alarm Flag” then click the OK button. This will clear the verify alarm and the Unit #1 Compressor may now be overridden on or off.

To override the Unit #1 Compressor on click the Output Verify Action button. Select the “Override Output ON” item and click OK. The override status box will display yes and the Output status will display On.

To override the Unit #1 Compressor off click the Output Verify Action button. Select the “Override Output OFF” item and click OK. The override status box will display yes and the Output status will display OFF.

To clear an override, click the Output Verify Action button. Select “Clear RAM Override Flag”. Resume Application” and click OK.

6.4.3.2 Unit #1 Blower

The override status box displays the current override condition of the Unit #1 Blower. It will read “Yes” if the output has been overridden on or off.

The output value box displays the current condition of the Unit #1 Blower. It will read either on or off.

The Verify Alarm Status box displays the current condition of the Unit #1 Blower verify alarm. It will read either OK or Alarm. If the Verify Alarm Status is in alarm the output cannot be overridden on or off until the alarm is cleared. The verify alarm will be logged as a #1 Blower Fail in the alarm log tab and as a Unit #1 Blower Alarm, Fault Alarm on the Alarms Tab.

To Clear the Verify Alarm, click the Output Verify Action button. Select “Clear Verify Alarm Flag” then click the OK button. This will clear the verify alarm and the Unit #1 Blower may now be overridden on or off.

To override the Unit #1 Blower on click the Output Verify Action button. Select the “Override Output ON” item and click OK. The override status box will display yes and the Output status will display On.

To override the Unit #1 Blower off click the Output Verify Action button. Select the “Override Output OFF” item and click OK. The override status box will display yes and the Output status will display OFF.

To clear an override, click the Output Verify Action button. Select “Clear RAM Override Flag”. “Resume Application” and click OK.

6.4.3.3 Unit #1 Economizer

The override status box displays the current override condition of the Unit #1 Economizer. It will read “Yes” if the output has been overridden on or off.

The output value box displays the current condition of the Unit #1 Economizer. It will read either on or off.

To override the Unit #1 Economizer on click the Output Verify Action button. Select the “Override Output ON” item and click OK. The override status box will display yes and the Output status will display ON.

To override the Unit #1 Economizer off click the Output Verify Action button. Select the “Override Output OFF” item and click OK. The override status box will display yes and the Output status will display OFF.

To clear an override, click the Output Verify Action button. Select “Clear RAM Override Flag”.

6.4.3.4 Unit #1 Heater

The override status box displays the current override condition of the Unit #1 Heater. It will read “Yes” if the output has been overridden on or off.

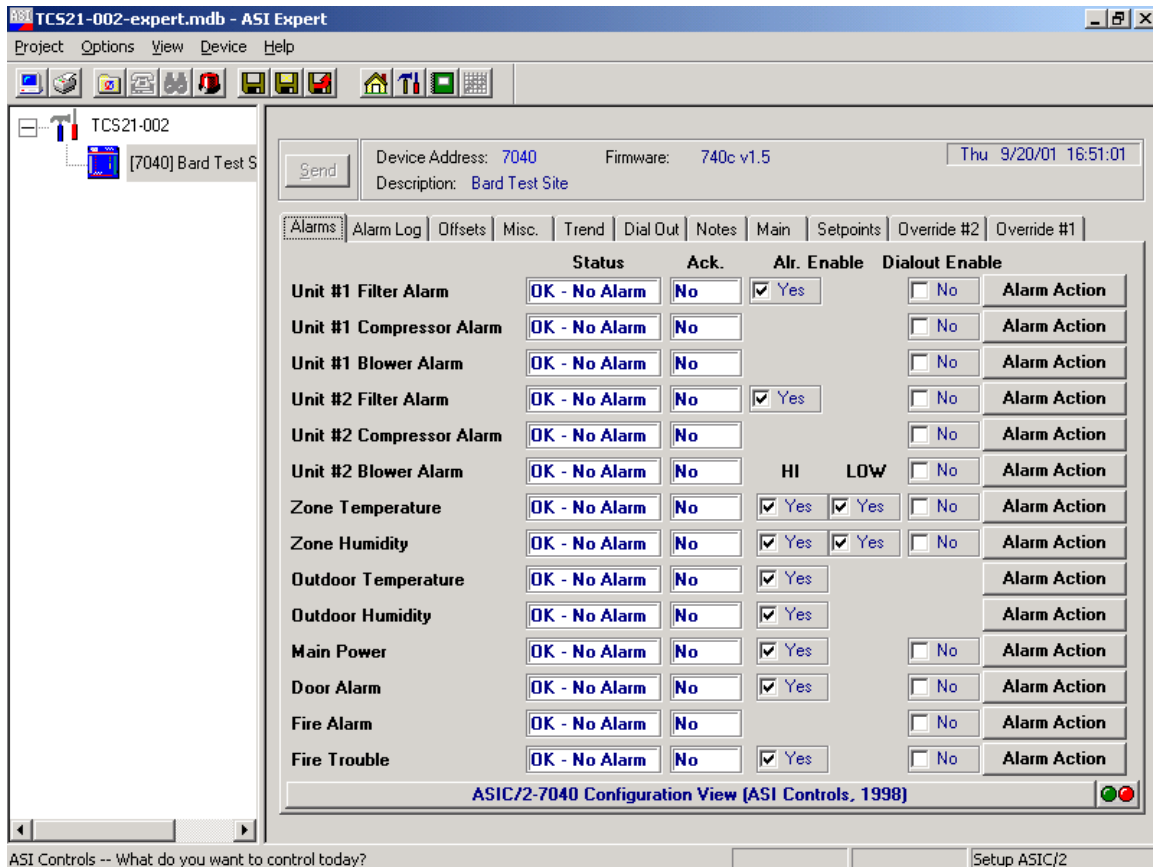
The output value box displays the current condition of the Unit #1 Heater. It will read either ON or OFF.

To override the Unit #1 Heater on click the Output Verify Action button. Select the “Override Output ON” item and click OK. The override status box will display yes and the Output status will display ON.

To override the Unit #1 Heater off click the Output Verify Action button. Select the “Override Output OFF” item and click OK. The override status box will display yes and the Output status will display OFF.

To clear an override, click the Output Verify Action button. Select “Clear RAM Override Flag”.

6.4.4 ALARMS TAB



The Alarms Tab will switch to the screen containing the Alarm information from the Controller. The Alarm screen will allow the user to check the alarm status of the Zone Temperature, Zone Humidity, Outdoor Temperature, Outdoor Humidity, Main Power, Door Alarm, Fire Alarm and Fire Trouble. Blower, Compressor, and Filter alarms of the conditioning units can also be monitored.

Several alarms can be enabled or disabled by checking the alarm enable check box. Do not disable an alarm that is in alarm. Doing so will lock the alarm on and it will not be able to be cleared or acknowledged until the alarm is re-enabled.

All alarms can be acknowledged. Acknowledging an alarm resets the shelter alarm output to normally open so that any new alarm will re-close the output and signify a new alarm. Most alarms are self-clearing alarms. Once the condition that caused the alarm is corrected or goes away the alarm resets.

The compressor and blower alarms are not self clearing alarms and must be manually cleared from the Override screen. These are the verify alarms.

An alarm can also be used to initiate a dial-out alarm call to a pager or printer. Clicking the Dial-out enable check box enables dial-out alarms. The dial-out phone numbers are maintained under the Dial Out tab.

6.4.4.1 Unit #1 Filter Alarm

If a Filter becomes too Dirty, the Shelter Alarm indicator on the main screen will flash, the Unit #1 Filter Status will indicate “Fault Alarm” and an alarm event will be logged in the alarm log. To acknowledge the alarm, click the Alarm Action button . Pick the Acknowledge This Alarm & Clear COS Alarm item and click OK. This resets the Shelter Alarm indicator and allows it to capture and indicate any new incoming alarms. Repair personnel should be dispatched to the Site to service the filter in #1 Unit. This is a Self Clearing Alarm. Once the Filter has been replaced and the dirty filter switch in the unit reset, the Alarm will be removed.

6.4.4.2 Unit #1 Compressor Alarm

If a Compressor failure occurs, the Shelter Alarm indicator on the Main Screen will flash, the Unit #1 Compressor Status will indicate “Fault Alarm” and an alarm event will be logged in the alarm log. To acknowledge the alarm, click the Alarm Action button. Pick the Acknowledge This Alarm & Clear COS Alarm item and click OK. This resets the Shelter Alarm indicator and allows it to capture and indicate any new incoming alarms.

Repair personnel should be dispatched to the Site to repair the Compressor. Acknowledgment of the failure does not clear the alarm. Once the Compressor has been fixed, the alarm should be cleared to allow the Compressor to resume normal operation. The alarm can be cleared from the Unit #1 Override tab. See Section 5.3-2.1. Clearing the Alarm before the Compressor can be fixed will cause the Compressor to fail again and another Shelter Alarm to be sent

6.4.4.3 Unit #1 Blower Alarm

If a Blower failure occurs, the Shelter Alarm indicator on the Main Screen will flash, the Unit #1 Blower Status will indicate “Fault Alarm” and an alarm event will be logged in the alarm log. To acknowledge the alarm, click the Alarm Action button. Pick the Acknowledge This Alarm & Clear COS Alarm item and click OK. This resets the Shelter Alarm indicator and allows it to capture and indicate any new incoming alarms.

Repair personnel should be dispatched to the Site to repair the Blower. Acknowledgment of the failure does not clear the alarm. Once the Blower has been fixed, the alarm should be cleared to allow the Blower to resume normal operation. The alarm can be cleared from the Unit #1 Override tab. See Section 5.3-2.1. Clearing the Alarm before the Blower can be fixed will cause the Blower to fail again and another Shelter Alarm to be sent.

6.4.4.4 Unit #2 Blower Alarm

Same as Unit #1 Blower Alarm except applies to Unit #2.

6.4.4.5 Zone Temperature Alarm

If the Zone Temperature exceeds the High or Low Alarm Temperature setpoints, then the Shelter Alarm indicator on the Main Screen will flash. A High or Low Alarm will be shown in the Alarm status textbox on the Alarm Screen. The Shelter Alarm indicator on the Main Screen will flash until the Alarm has been acknowledged or the Zone Temperature is no longer in Alarm. Once the alarm has been acknowledged, the Shelter Alarm will no longer flash for the Zone Temperature Alarm. This allows the Shelter Alarm indicator to be reset to capture and indicate any new incoming Alarms.

The Zone Temperature and Humidity have four possible states. The first of which is OK and indicates that the values are within the set ranges. The second state would be a High Alarm condition, stating that the value is above the High Alarm setpoint for that value. The third possible state would be the Low Alarm condition, stating that the value is below the Low Alarm setpoint. The last alarm state is fault alarm indicating that the sensor is reading an out of bounds condition.

6.4.4.6 Zone Humidity Alarm

If the Zone Humidity exceeds the High or Low Alarm Humidity setpoints, then the Shelter Alarm indicator on the Main Screen will flash. A High or Low Alarm will be shown in the Alarm status textbox on the Alarm Screen. The Shelter Alarm indicator on the Main Screen will flash until the Alarm has been acknowledged or the Zone Humidity is no longer in Alarm. Once the alarm has been acknowledged, the Shelter Alarm will no longer flash for the Zone Humidity Alarm. This allows the Shelter Alarm indicator to be reset to capture and indicate any new incoming Alarms.

The Zone Temperature and Humidity have four possible states. The first of which is OK and indicates that the values are within the set ranges. The second state would be a High Alarm condition, stating that the value is above the High Alarm setpoint for that value. The third possible state would be the Low Alarm condition, stating that the value is below the Low Alarm setpoint. The last alarm state is fault alarm indicating that the sensor is reading an out of bounds condition.

6.4.4.7 Outdoor Temperature Alarm

If the Outdoor Temperature sensor exceeds the High or Low Fault setpoints, then the Shelter Alarm indicator on the Main Screen will flash. A Fault Alarm will be shown in the Alarm status textbox on the Alarm Screen. The Shelter Alarm indicator on the Main Screen will flash until the Alarm has been acknowledged or the Outdoor Temperature Sensor is no longer in a fault conditions. Once the alarm has been acknowledged, the Shelter Alarm will no longer flash for the Outdoor Temperature Alarm. This allows the Shelter Alarm indicator to be reset to capture and indicate any new incoming Alarms.

6.4.4.8 Outdoor Humidity Alarm

If the Outdoor Humidity exceeds the High or Low Fault setpoints, then the Shelter Alarm indicator on the Main Screen will flash. A High or Low Alarm will be shown in the Alarm status textbox on the Alarm Screen. The Shelter Alarm indicator on the Main Screen will flash until the Alarm has been acknowledged or the Outdoor Humidity Sensor is no longer in a fault condition. Once the alarm has been acknowledged, the Shelter Alarm will no longer flash for the Outdoor Humidity Alarm. This allows the Shelter Alarm indicator to be reset to capture and indicate any new incoming Alarms.

6.4.4.9 Main Power Alarm

If Main Power fails, the Shelter Alarm indicator on the Main Screen will flash. The Shelter Alarm indicator on the Main Screen will flash until the Alarm has been acknowledged or the Power Failure Condition is no longer valid. This is a Self Clearing Alarm. Once the Main Power has been restored, the Alarm will be cleared.

6.4.4.10 Fire Alarm

If a Fire Alarm occurs, the Shelter Alarm indicator on the Main Screen will flash. The Fire Alarm can be acknowledged. This will allow the shelter alarm to be reset to capture and indicate any new incoming Alarms. This is a Self Clearing Alarm. Once the Fire Alarm system has been reset the Alarm will be removed.

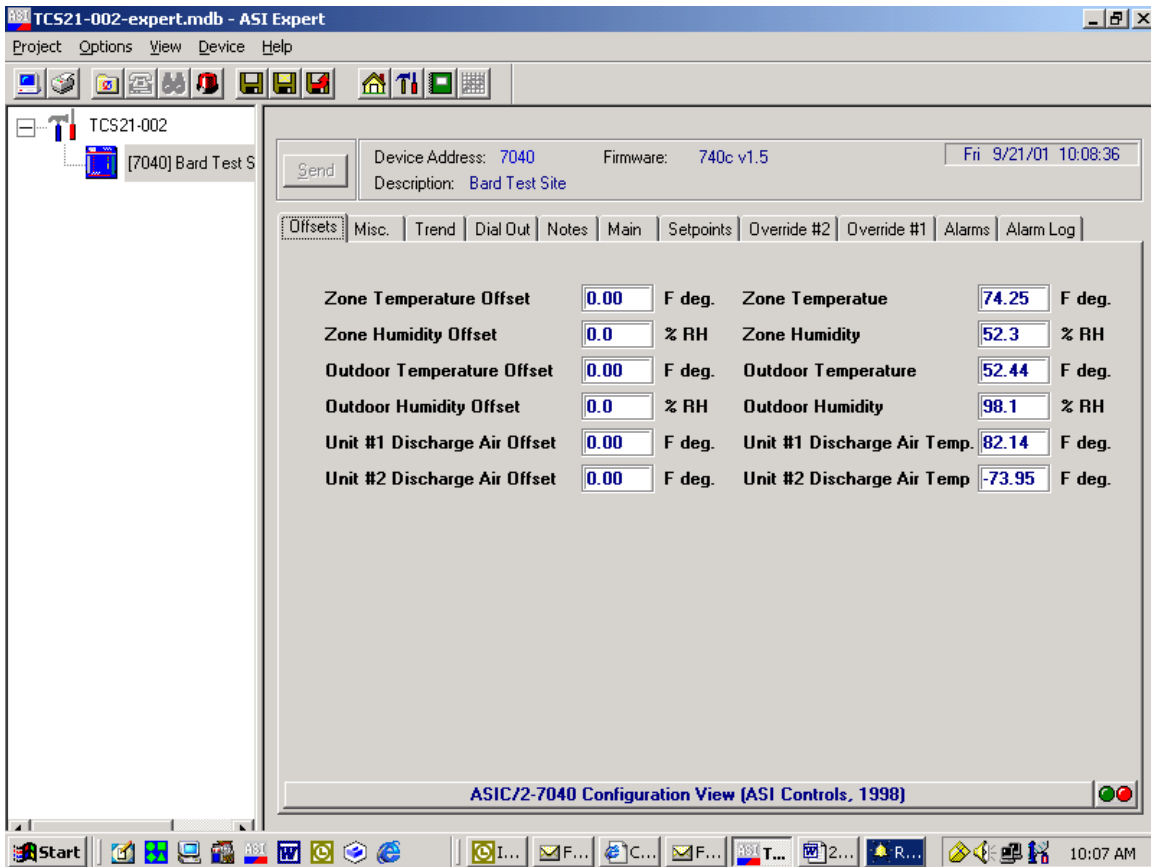
6.4.4.11 Fire Trouble Alarm

If a Fire Trouble Alarm occurs, the Shelter Alarm indicator on the Main Screen will flash. The Fire Trouble Alarm can be acknowledged. This will allow the shelter alarm to be reset to capture and indicate any new incoming Alarms. This is a Self Clearing Alarm. Once the Fire Trouble Alarm system has been reset the Alarm will be cleared.

6.4.4.12 Door Alarm

If a Door Alarm occurs, the Shelter Alarm indicator on the Main Screen will flash. The Door Alarm can be acknowledged and this will clear the shelter alarm and allow it to be reset to capture and indicate any new incoming alarms. This is a Self Clearing Alarm. Once the Door is closed the Alarm will be removed.

6.4.6 OFFSETS TAB



The Offset screen will allow the User to adjust the sensor offsets to calibrate for sensor tolerances. Click on the offset value to enter a new value.

6.4.6.1 Zone Temperature Offset

The Zone Temperature will add the value seen in the textbox from the Zone Temperature to calibrate the sensor.

6.4.6.2 Zone Humidity Offset

The Zone Humidity Offset will add the value seen in the textbox from the Zone Humidity to calibrate the sensor.

6.4.6.3 Outdoor Temperature Offset

The Outdoor Temperature Offset will add the value seen in the textbox from the Outdoor Temperature to calibrate the sensor.

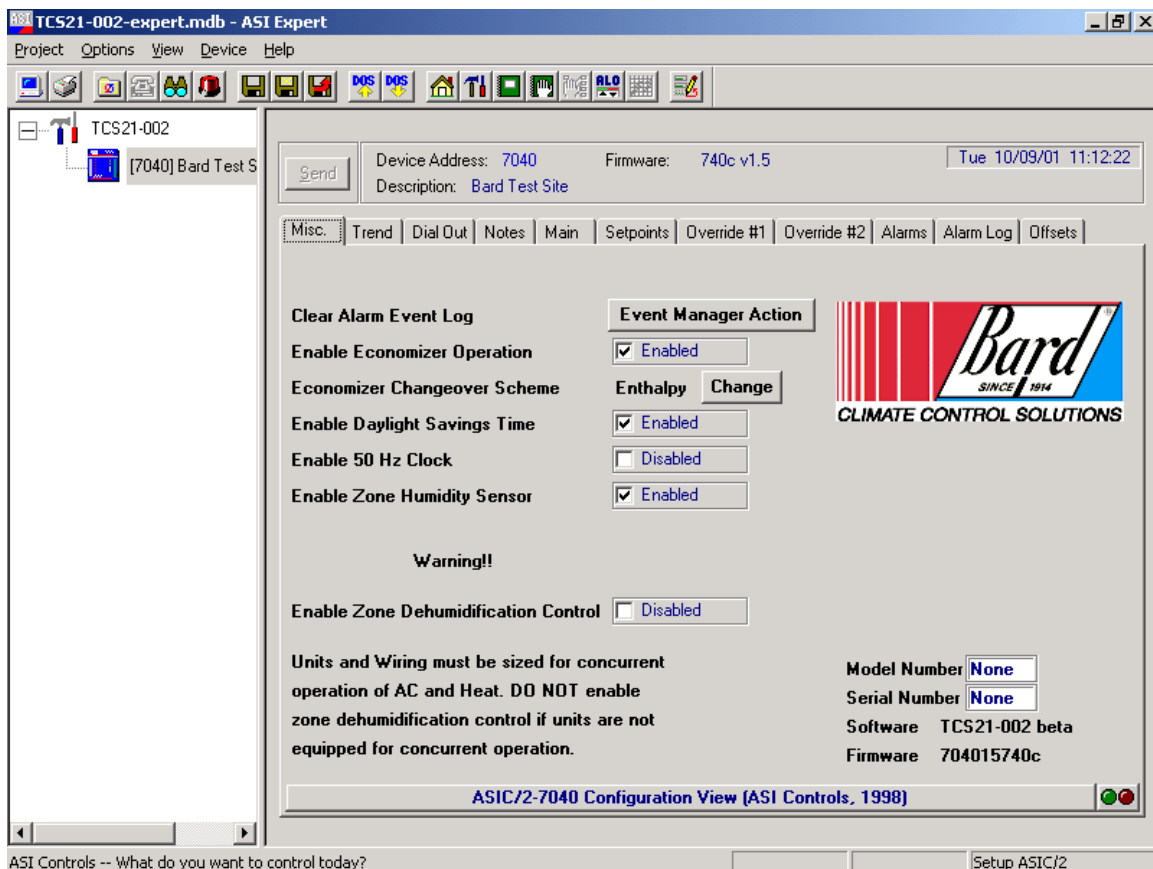
6.4.6.4 Outdoor Humidity Offset

The Outdoor Humidity Offset will add the value seen in the textbox from the Outdoor Humidity to calibrate the sensor.

6.4.6.5 Unit #1 Supply Air Temperature Offset

The Unit #1 Supply Air Temperature Offset will add the value seen in the textbox from the Unit #1 Supply Air Temperature to calibrate the sensor.

6.4.7 MISC. TAB



The Misc. tab displays several options that are available in the TCS firmware and other information about the controller hardware. The options that can be disabled or enabled include economizer operation, daylight savings time, 50 Hz operation, zone humidity sensor, and zone dehumidification sequence. The economizer changeover scheme can be change to either enthalpy or dry bulb temperature and the alarm log can be cleared from this screen.

Also included is access to an area of the controller where the TCS model and serial number can be stored. The controller software and firmware version are also displayed.

6.4.7.1 Clear Alarm Event Log

Clicking this button erases any old information in the alarm log and resets all of the messages to the default “OK - No Alarm” condition.

6.4.7.2 Enable Economizer Operation.

Checking this check box enables economizer operation. If the air conditioners controlled by the TCS do not have economizers economizer operation should be disabled. This disables two stages of cooling that are normally used to energize the economizers if free cooling is available. Factory default for this value is enabled.

6.4.7.3 Economizer Changeover Scheme

The economizer changeover scheme is selectable between enthalpy changeover or dry bulb temperature changeover. The default for this is enabled. When enthalpy changeover scheme is used the economizers will be used as 1st and 2nd stage cooling as long as the outdoor enthalpy is below the Enthalpy changeover setpoint. When dry bulb temperature scheme is used the economizers will be used as 1st and 2nd stage cooling as long as the outdoor temperature is below the dry bulb temperature changeover setpoint. Clicking the button will change to the opposite changeover scheme.

6.4.7.4 Enable Daylight Savings Time

This checkbox enables daylight saving time for the controller hardware clock. If the site location is in an area that does not use daylight savings time during the summer uncheck this box. The default setting for daylight savings time is enabled.

6.4.7.5 Enable 50 Hz Clock

This checkbox enables 50 Hz clock operation. If the site location is in an area has 50 Hz power supplies check this box. This assumes correct operation of the hardware clock. The default setting for Enable 50 Hz clock is disabled.

6.4.7.6 Enable Zone Humidity Sensor

The TCS can be ordered without an indoor humidity sensor. The model number will have a “T” in the 7th position of the model number if no humidity sensor was ordered. Factory default for this value is enabled. If the TCS does not have an indoor humidity sensor, disable this feature.

6.4.7.7 Enable Zone Dehumidification

The TCS can provide zone dehumidification by running the air conditioners and cycling electric heat on and off to maintain room temperature. Factory default for this value is disabled. Note: The air conditioner circuit breakers and wiring must be sized for concurrent operations air-conditioning and electric heat. Special dehumidification models are available for use with this feature. These models have circuit breakers and special MCA and MOP ratings that allow concurrent operation of the air conditioners and electric heat. These are special, dedicated code models ending in D053, D061, D062, D064, or D066. Enable this feature if dehumidification is required. Consult your Bard representative for more information.

6.4.7.8 Model Number

Click on the text box and enter the model number from the TCS serial plate. The model number is stored in the controller and can be accessed for troubleshooting and parts replacement purposes.

6.4.7.9 Model Serial Number

Click on the text box and enter the serial number from the TCS serial plate. The serial number is stored in the controller and can be accessed for troubleshooting and parts replacement purposes.

6.4.7.10 Software

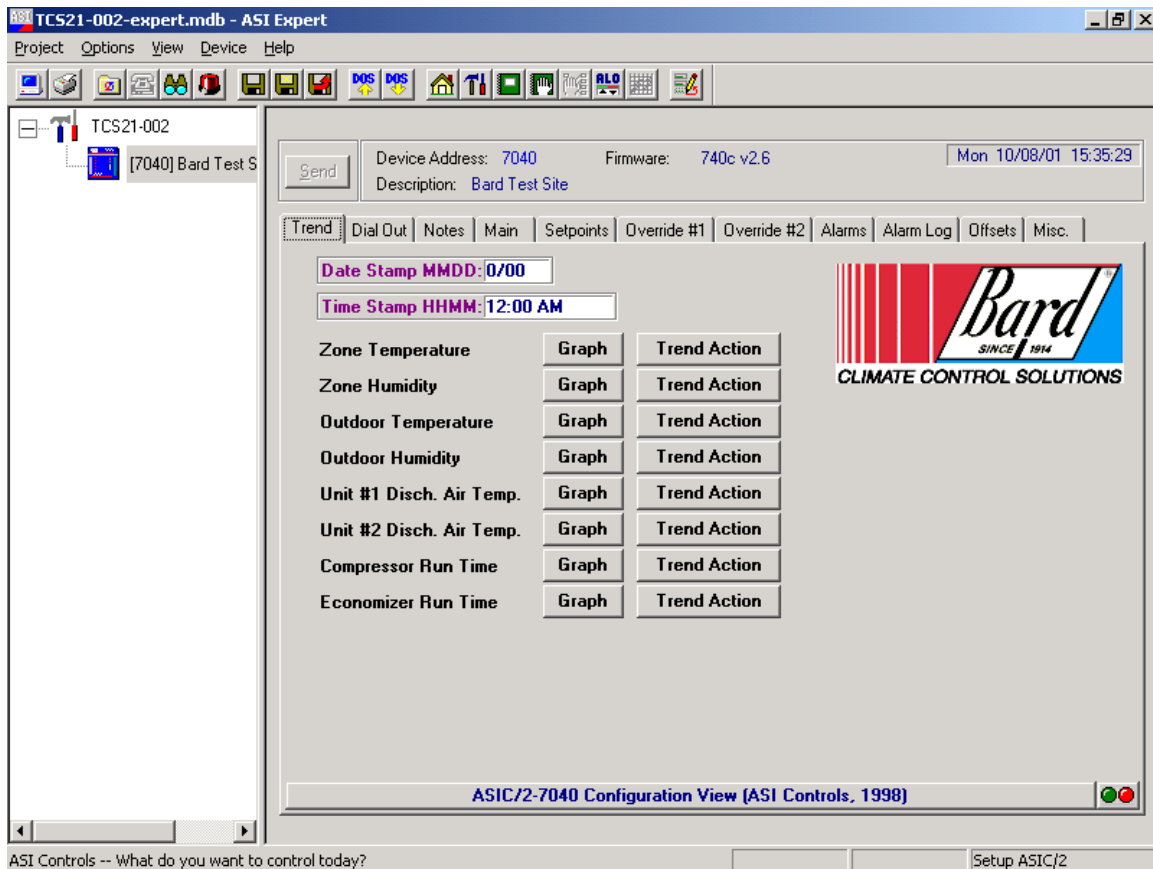
The factory installed software version is displayed and is required for troubleshooting purposes.

6.4.7.11 Firmware

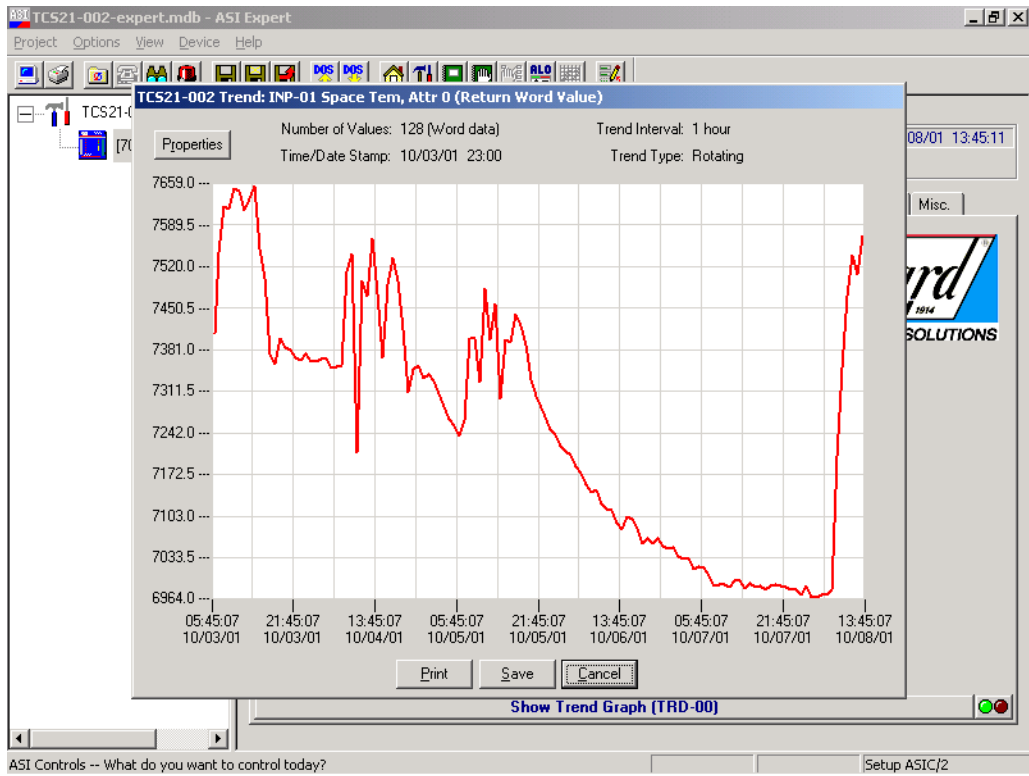
The factory installed firmware version is displayed and is required for troubleshooting purposes.

6.4.8 TREND TAB

The Trend Logger will access the Remote Site and Acquire the site information stored in the controller. This information is stored in a comma separated value file. The information stored is the Zone Temperature, Zone Humidity, Outdoor Temperature, Outdoor Humidity, Unit #1 Supply Air Temperature, Unit #2 Supply Air Temperature, Mechanical Run Time, and Economizer Run Time. The controller will store all of these values once per hour and will hold up to 128 hours of data. Once the data register has been filled, the new data will overwrite the oldest data in the register. The Data should be acquired at least every 128 hours to make sure that none of the data is overwritten without being stored.



To save or graph the stored information, click on the graph button at the side of the desired information. A graph of the stored information will appear and it can then be printed or saved to a file of your choice for later reference.



6.4.9 DIAL OUT TAB

TCS21-002-expert.mdb - ASI Expert

Project Options View Device Help

TCS21-002 [7040] Bard Test S

Send Device Address: 7040 Firmware: 740c v1.5 Fri 9/21/01 10:10:59
 Description: Bard Test Site

Dial Out Notes Main Setpoints Override #2 Override #1 Alarms Alarm Log Offsets Misc. Trend

Site Name **Bard Test Site**

Site Phone Number

Primary Number: Primary Msg Format: **Numeric Pager**

Secondary Number: Secondary Msg Format: **Numeric Pager**

Dial 2nd Enable: No

Send to Both Enable: No

ASIC/2-7040 Configuration View (ASI Controls, 1998)

ASI Controls -- What do you want to control today? Setup ASIC/2

The Dial-Out Screen displays the Site name and Site phone number. The site name is included with other information when the TCS dials out and connects to a Printer. When the TCS dials out to a pager it sends the phone number of the site to the pager so the technician can call in to the site to see what the problem is. The site name that is stored in the controller is displayed and can be changed by clicking on the name

The Site phone number is the phone number of the site for modem connection. This number can be up to 25 characters long. The number may contain hyphens or commas, but they are not necessary for operation.

The Primary number is the first phone number that will be dialed for Alarm notification. This number can be up to 25 characters long. The number may contain hyphens or commas, but they are not necessary for operation.

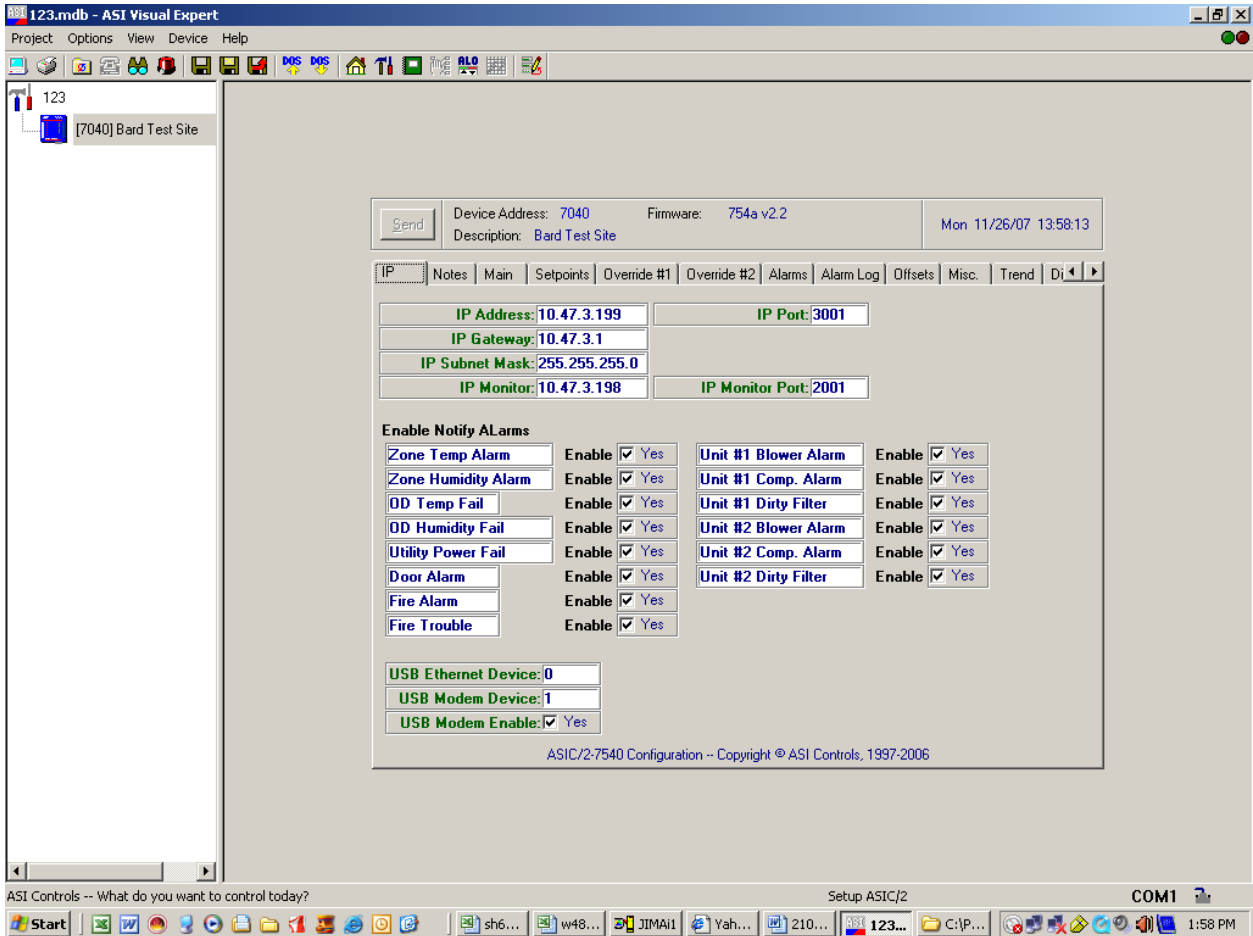
The Secondary number is the second phone number that will be dialed for Alarm notification. This number can be up to 25 characters long. The number may contain hyphens or commas, but they are not necessary for operation.

The primary message format is the type of Alarm message that will be sent for Alarm notification. The message will be a printer message or pager message.

The secondary message format is the type of Alarm message that will be sent for Alarm notification. The message will be a printer message or pager message.

The Send to Both option will allow the controller to dial one or both of the phone numbers for Alarm notification.

6.4.10 IP TAB



The IP Address, IP Port, IP Gateway, IP Subnet Mask, IP Monitor and IP Monitor Port values are not used at this time.

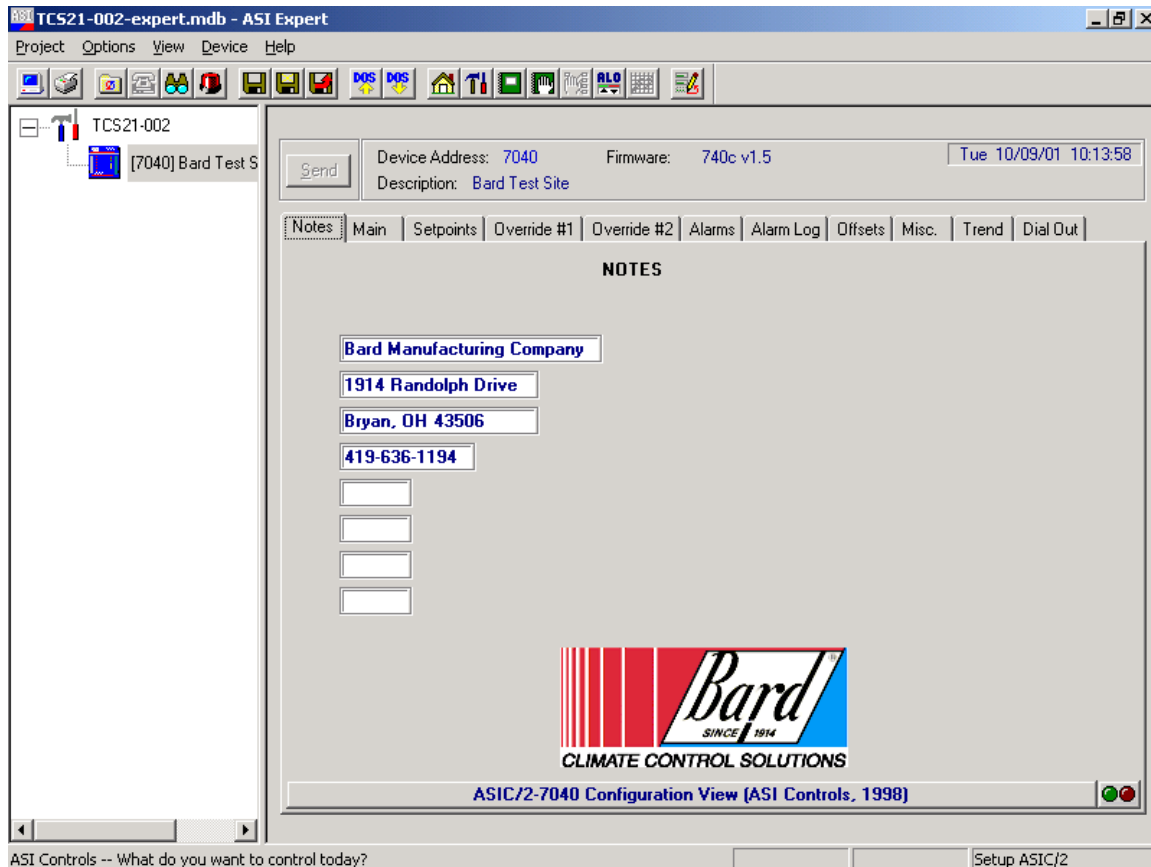
The Enable Notify Alarms check boxes are used to enable or disable remote alarming via an Etherlink adapter. If the TCS24 controller is equipped with an ASI Etherlink adapter alarms can be sent to a remote computer running ASI WebLink software to capture incoming alarms.

USB Etherlink Device is not used.

USB Modem device will show 1 if a USB modem is attached to the controller.

USB Modem enable will be checked Yes if a USB modem is attached to the controller.

6.4.11 NOTES TAB



The notes tab is just a group of 8 message boxes that can be used to make notes about the controller or leave messages concerning the controller for the next technician. Clicking on one of the message boxes allows you to type a message up to 32 characters long.

7. MAINTENANCE & TROUBLESHOOTING

7.1 Routine Maintenance

The TCS24 requires minimal maintenance. Once every 4 years replace the battery under the controller cover. This battery powers the hardware clock during power outages.

Check sensor calibration once every two years.

7.2 Troubleshooting

7.2.1 TCS24 TROUBLESHOOTING

Problem	Check Out Points	Procedure
TCS24 Fails to operate	Check 240 Volt Power	
	Check TCS24 Circuit breaker	
	Check 24 Volt Power	Remove power connector from controller and Check for 24 volt Power from pin 1 to pin 3 on plug
	Check Internal Fuse	Remove screws from the four corner of the front panel of the controller. The fuse is located in upper left hand corner of the controller.
Blower #1 light is On but Blower fails to operate	Check A/C unit 24 Volt power from C to G	
	Check controller switch	Remove junction connector J5. Check for continuity from pin #3 to pin #6 on controller with the Blower light ON.
	Check wiring and connections	
Compressor #1 light is On but Compressor fails to operate	Check A/C unit 24 Volt power from C to Y	
	Check controller switch	Remove junction connector J5. Check for continuity from pin #2 to pin #5 on controller with the Compressor light ON.
	Check wiring and connections	
Heater #1 light is On but Heater fails to operate	Check A/C unit 24 Volt power from C to W1	
	Check controller switch	Remove junction connector J5. Check for continuity from pin #8 to pin #11 on controller with the Compressor light ON.
	Check wiring and connections	
Economizer #1 light is On but Economizer fails to operate	Check controller switch	Disconnect E from the terminal strip on the TCS24. Check for continuity from E to F on the terminal strip on controller with the Unit #1 Economizer light ON.

	Check operation of the Economizer	Connect a jumper wire on the A/C unit low voltage terminal strip from R to G. Connect another jumper wire on the A/C unit low voltage terminal strip from E to F (Never connect power to these terminals) and check for Economizer operation.
Modem not responding	Check status of lights on Modem	Reset Modem
Zone Temperature Sensor	Check Sensor output	Determine the Temperature of the structure. Remove plug in connector J2 from the TCS24 controller. With a Digital VOM, check the resistance between pins #1 and #4 in the plug. The resistance will correspond with the Temperature of the sensor according to Table 4.
Zone Humidity Sensor	Check Sensor Input	Check the AC voltage supply to the Sensor output board, inside the door of the TCS24. The voltage should be 24 Volts AC
	Check Sensor Output	Check the DC output voltage from the sensor output board, inside the door of the TCS24. The voltage should be between 1 and 5 Volts DC. The Output voltage will correspond with the Humidity according to Table 3.
Outdoor Temperature Sensor	Check Sensor Output	Determine the Outdoor Temperature. Remove plug in connector J1 from the TCS24 controller. With a Digital VOM, check the resistance between pins #13 and #14 in the plug. The resistance will correspond with the Temperature of the sensor according to Table 4.
Outdoor Humidity Sensor	Check Sensor Input	Check the AC voltage supply to the Sensor output board, inside the sensor housing. The voltage should be 24 Volts AC
	Check Sensor Output	Check the DC output voltage from the sensor output board, inside the sensor housing. The voltage should be between 1 and 5 Volts DC. The Output voltage will correspond with the Humidity according to Table 3.

Discharge Air Sensor #1	Check Sensor Output	Determine the Temperature of the discharge air. Remove plug in connector J2 from the TCS24 controller. With a Digital VOM, check the resistance between Terminal #4 and Terminal #5 on the low voltage terminal block of the A/C unit. The resistance will correspond with the Temperature of the sensor according to Table 4.
Dirty Filter Sensor #1	Check Output	Remove plug in connector J2 from the TCS24 controller. Observe Filter flag status of the A/C unit. If the Change Filter flag is not visible, then there should be no continuity between terminals #6 and #7 of the A/C unit low voltage terminal block. If the Change Filter flag is visible, then there should be continuity between terminals #6 and #7 of the A/C unit voltage terminal block.
Compressor Current Sensor #1	Check Sensor Output	Remove plug in connectors J1, J2 and J4 from the TCS24 controller. Connect a jumper wire between R and G of the A/C unit low voltage terminal block to operate the blower. Observe the status of the compressor current sensor LEDs. No LED's should be on. Connect a jumper wire between R and Y of the A/C unit low voltage terminal block to operate the compressor. When the compressor is running, the "Trip ON" red LED should illuminate; adjust potentiometer on the sensor until this LED illuminates when compressor is running.
Blower Airflow Sensor #1	Check Sensor Output	Remove plug in connectors J1, J2 and J4 from the TCS24 controller. Check continuity between terminal #8 and #9 of the A/C unit low voltage terminal block. This should be an Open circuit with the Blower off. Connect a jumper wire between R and G of the A/C unit low voltage terminal block to operate the blower. Check continuity between terminal #8 and #9 of the A/C unit low voltage terminal block. This should be a Closed circuit with the Blower running.

Table 3 Humidity Sensor Output

Volts DC vs. % RH

Humidity	Output *
% RH	Volts DC
5.00	0.25
10.00	0.50
15.00	0.75
20.00	1.00
25.00	1.25
30.00	1.50
35.00	1.75
40.00	2.00
45.00	2.25
50.00	2.50
55.00	2.75
60.00	3.00
65.00	3.25
70.00	3.50
75.00	3.75
80.00	4.00
85.00	4.25
90.00	4.50
95.00	4.75
100.00	5.00

* Measure between ZH V+ and ZH GND

Table 4 Thermistor Resistance vs. Temperature Table

Temp	Temp	10000 Ω Resistance	3000 Ω Resistance
Deg C	Deg F	Ohms	Ohms
-20.00	-4.00	79050	29,092
-15.00	5.00	61020	21,868
-10.00	14.00	47630	16,589
-5.00	23.00	37400	12,694
0.00	32.00	29560	9,795
5.00	41.00	23500	7,619
10.00	50.00	18790	5,971
15.00	59.00	15150	4,714
20.00	68.00	12290	3,748
25.00	77.00	10020	3,000
30.00	86.00	8206	2,417
35.00	95.00	6754	1,959
40.00	104.00	5599	1,597
45.00	113.00	4662	1,310
50.00	122.00	3898	1,080
55.00	131.00	3273	896.00
60.00	140.00	2759	746.00

7.2.2 WALL MOUNT QUICK TROUBLESHOOTING GUIDE

Operation	Procedure
Bypassing TCS24 Controller	Disconnect power to the TCS24. Unplug the plug in connectors J4 and J5 from the controller
Compressor Test	Connect jumper wire on A/C unit low voltage terminals from R to Y and observe Compressor operation (There will be a Time delay between the installation of the jumper and the starting of the Compressor. The Compressor Time Delay relay will determine the time delay period.). After the Compressor starts, the jumper wire can be removed.
Blower Test	Connect a jumper wire on A/C unit low voltage terminals R to G and observe Blower operation (The Blower will continue to run for One (1) minute after the jumper is removed).
Economizer Test	Connect a jumper wire on A/C unit low voltage terminals R to G and observe Blower operation. After Blower operation is confirmed, the Economizer can be tested. Leave the jumper in place from the previous step. Connect a separate jumper on the A/C unit low voltage terminals from E to F and observe the Economizer operation (Never connect power to terminals E or F).
Heater Test	Connect a jumper wire on A/C unit low voltage terminals R to W1. The Heating contactor will engage when the jumper is connected. The Blower will also operate while this jumper is in place. To check the operation of the Heater, you will have to check the Discharge Air temperature of the A/C unit.
Restarting TCS24	Remove All jumper wires and reconnect the plug in connectors J4 and J5 to the controller. Reapply power to the TCS24.