
INSTALLATION INSTRUCTIONS

OPTIONAL ELECTRIC HEAT PACKAGE

Models:

EH3GSVA-A05C

EH3GSVA-A09C

EH3GSVA-A14C

EH5GSVA-A09C

EH5GSVA-A14C

EH5GSVA-A18C

BMC, Inc.
Bryan, Ohio 43506

Manual: 2100-544B
Supersedes: 2100-544A
Date: 1-15-18

GENERAL

IMPORTANT

The equipment covered in this manual is to be installed by trained, experienced service and installation technicians.

SHIPPING DAMAGE

Upon receipt of equipment, the carton should be checked for external signs of shipping damage. If damage is found, the receiving party must contact the last carrier immediately, preferably in writing, requesting inspection by the carrier's agent.

UNPACKING THE HEAT PACKAGE

Remove the heat package from the shipping carton. The heat package must consist of the following:

1. Basic heater enclosure and control panel.
2. Installation instructions and wiring diagram.

INSTALLATION

INSTALLING HEAT PACKAGE TO GV UNIT

Service access clearance of 24" minimum required on side of unit in which heater package is installed.

Disconnect all power supplies to the unit. Remove the blower access door.

Remove the four screws from control panel and lay panel flat to allow removal and installation of blower and heater assemblies (see Figure 1).

Remove the two screws used to secure the blower angle to blower slide (see Figure 2 on page 4). Unplug motor leads from motor. Remove angle and slide blower assembly from unit.

Slide the heat package into the blower slide and screw into place (see Figure 3 on page 4).

Connect heat package control panel to top of unit (see Figure 4 on page 5). Slide blower assembly into heat package and secure in place with blower angle (see Figure 5 on page 5).

Plug in motor leads and set control panel to original position and screw into place with four screws.

CAUTION

Do not plug or unplug power connector with power applied. The power must be off for 5 minutes before plugs may be disconnected. Failure to remove power will result in motor failure.

WARNING

Failure to provide the 1" clearance between the supply duct and a combustible surface for the first 3' of duct can result in fire causing property damage, personal injury or death.

FIGURE 1

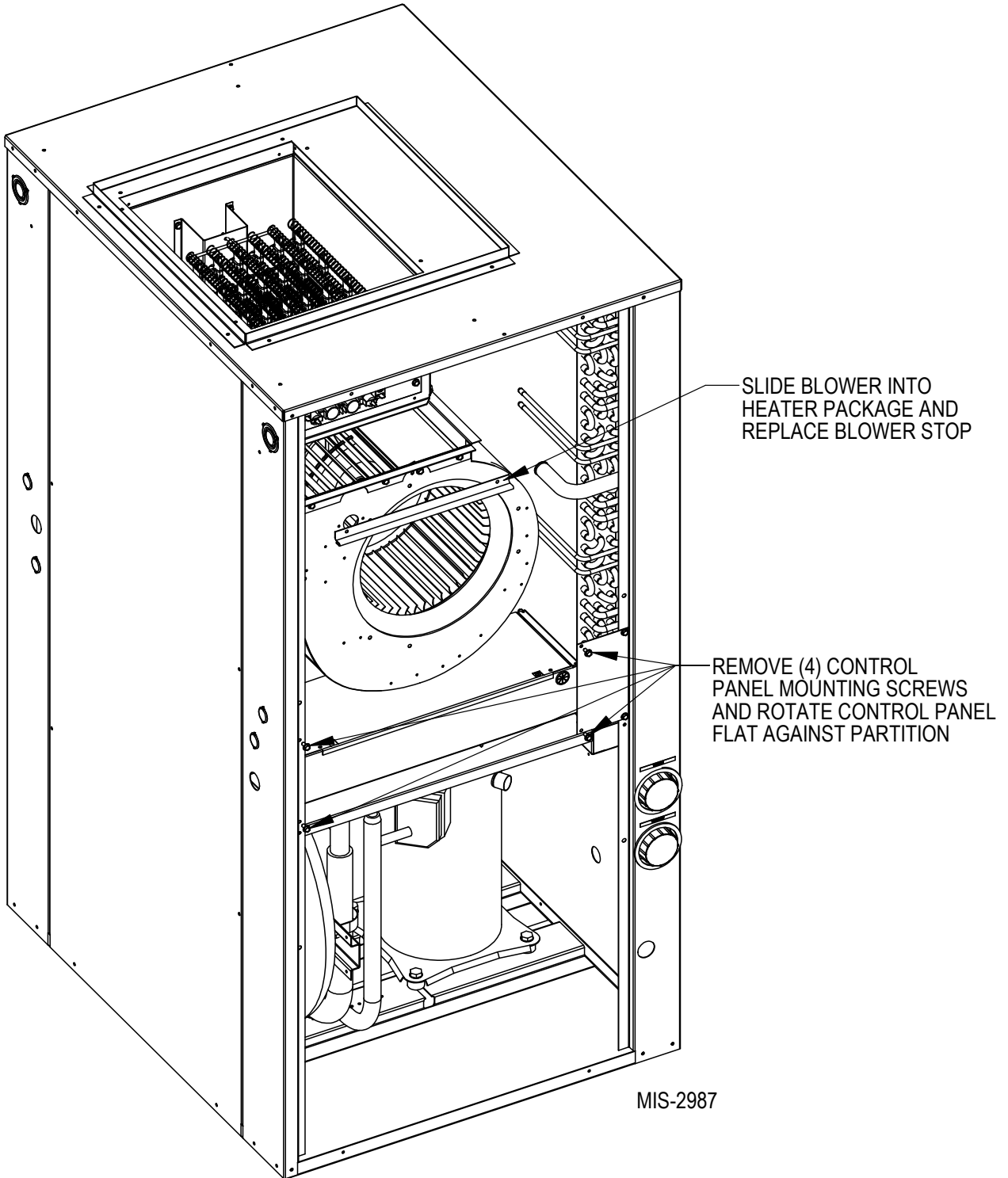
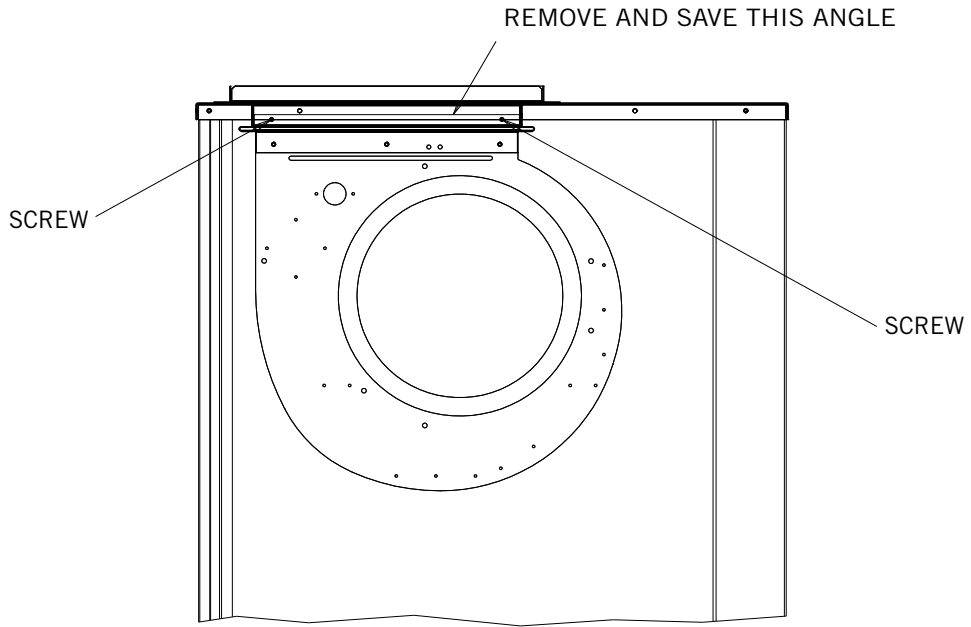
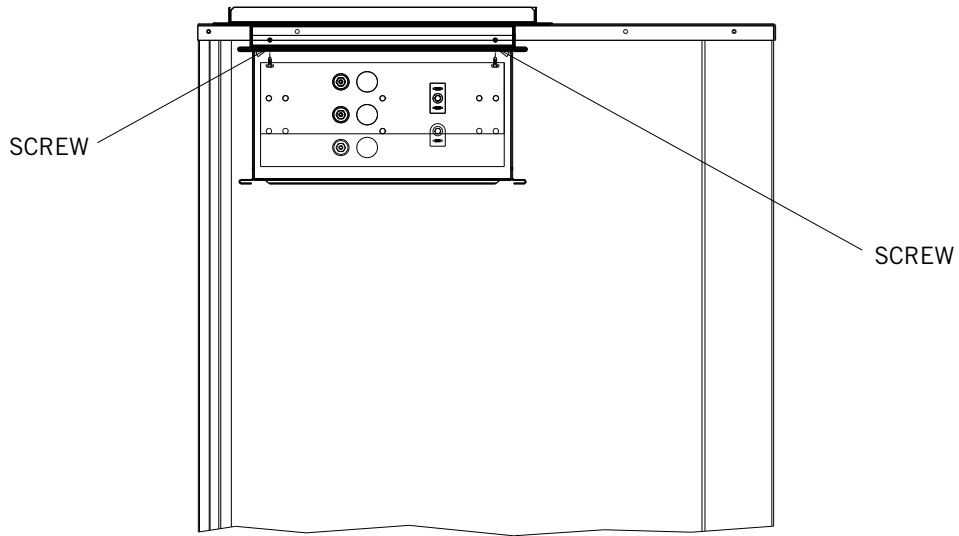


FIGURE 2
(Right Hand Return Shown)



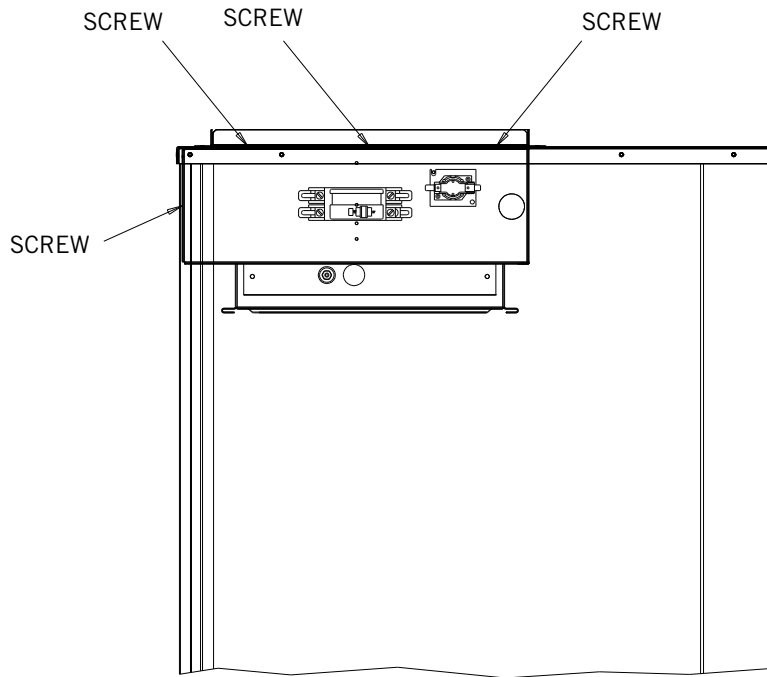
MIS-1239

FIGURE 3
(Right Hand Return Shown)



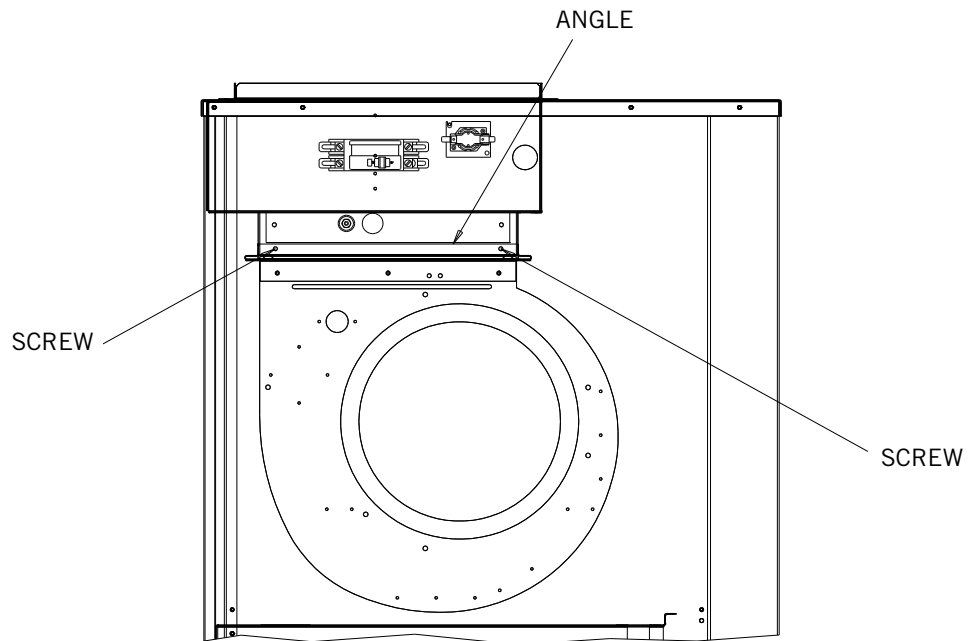
MIS-1240

FIGURE 4
(Right Hand Return Shown)



MIS-1241

FIGURE 5
(Right Hand Return Shown)



MIS-1242

WIRING

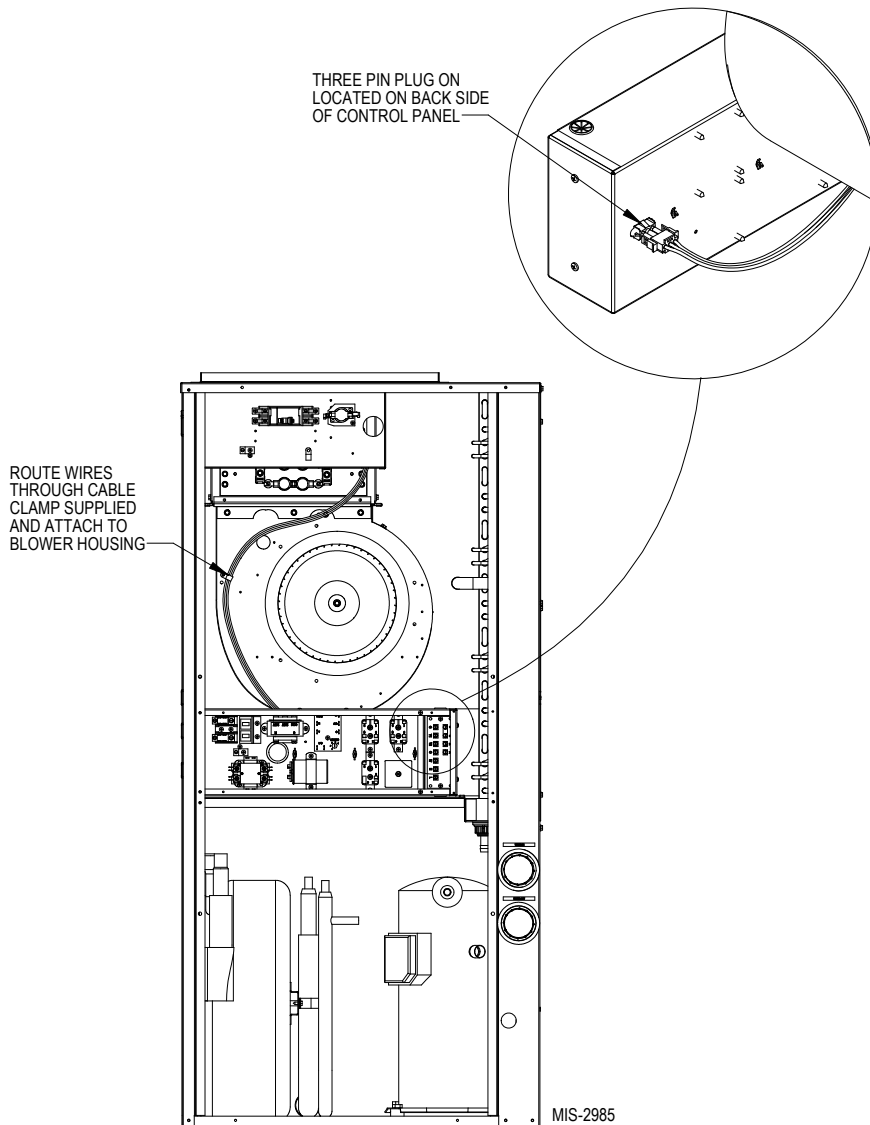
Power supply wiring can now be made to the heat package. Route the low voltage three pin plug through the wire restraints and plug into mating plug in back of control panel (see Figure 6). This connection supplies the low voltage control circuit to the heat package from the heat pump control circuit.

Inspect all wiring for damage and secure any loose wiring. Apply the heat package wiring diagram supplied onto the blower access panel in such a way as to not cover the circuit breaker knockouts.

Remove the proper knockout(s) in the blower access door that will allow the circuit breakers to extend through the door.

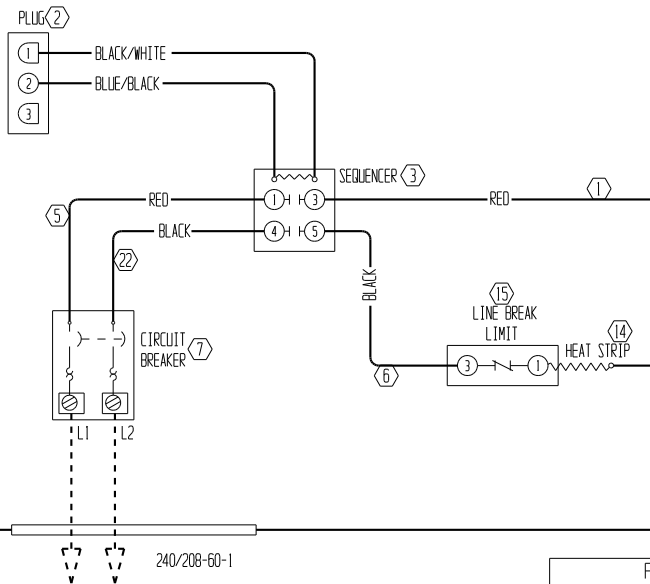
Replace the blower access door and the compressor access door. Energize the unit and check for proper system operation.

FIGURE 6
(Right Hand Return Shown)



CONNECTION DIAGRAM

DANGER: ELECTRICAL SHOCK HAZARD.
DISCONNECT POWER BEFORE SERVICING.

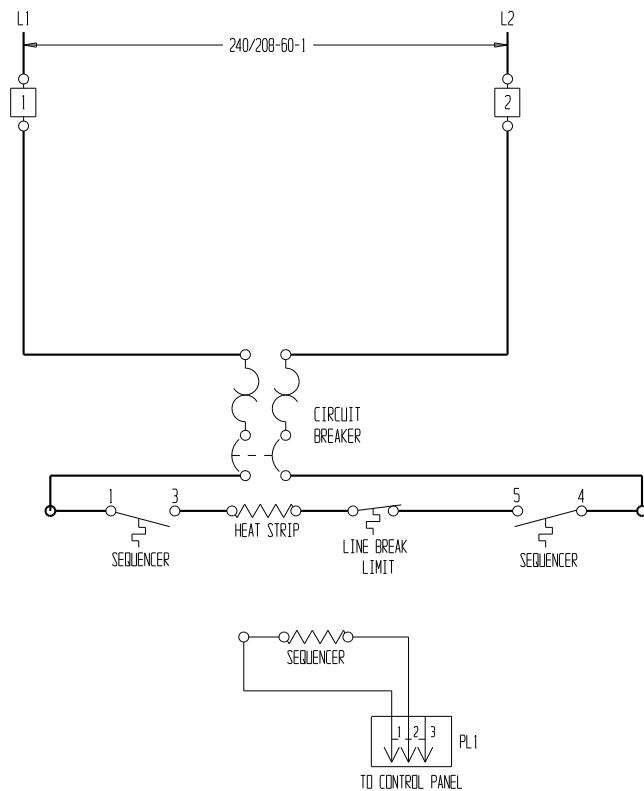


NOTE: REFER TO THE HEATER PACKAGE
INSTRUCTIONS FOR PROPER INSTALLATION

	FACTORY WIRING	FIELD WIRING
Low Voltage	_____	-----
High Voltage	_____	-----

USE COPPER CONDUCTORS
ONLY SUITABLE FOR
AT LEAST 75°C

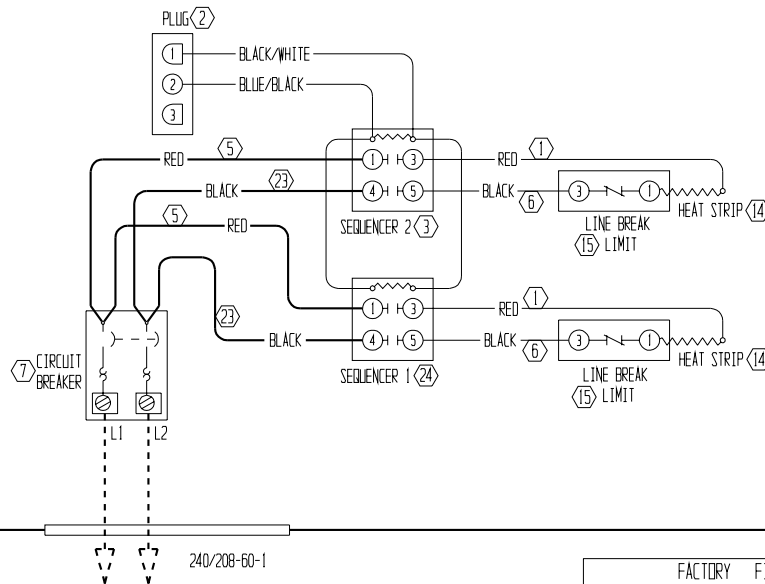
LADDER DIAGRAM



4106-100 A

CONNECTION DIAGRAM

DANGER: ELECTRICAL SHOCK HAZARD.
DISCONNECT POWER BEFORE SERVICING.

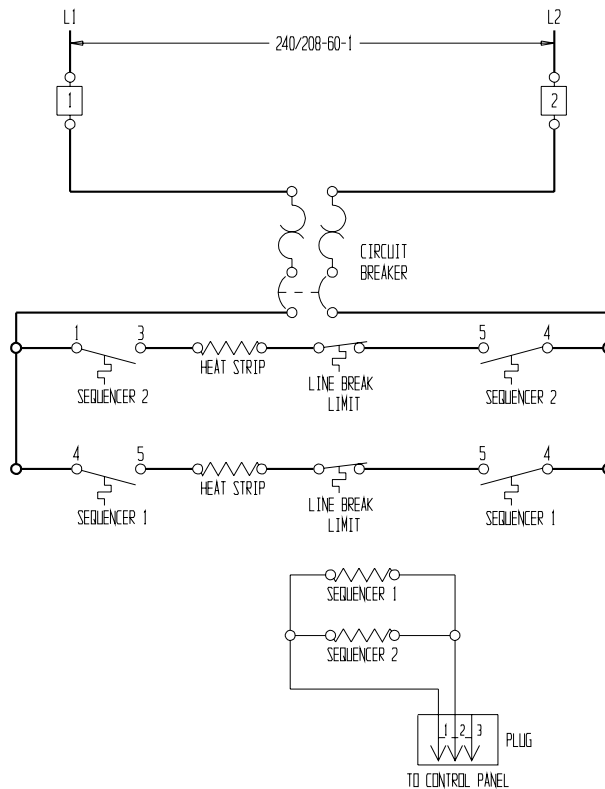


NOTE: REFER TO THE HEATER PACKAGE INSTRUCTIONS FOR PROPER INSTALLATION

	FACTORY WIRING	FIELD WIRING
Low Voltage	—————	-----
High Voltage	—————	-----

USE COPPER CONDUCTORS ONLY SUITABLE FOR AT LEAST 75°C

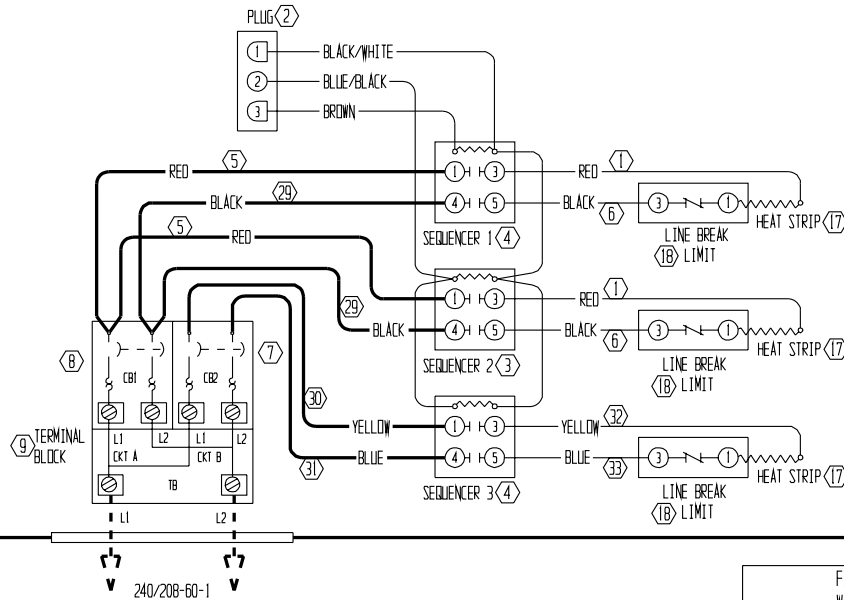
LADDER DIAGRAM



4106-110 A

CONNECTION DIAGRAM

DANGER: ELECTRICAL SHOCK HAZARD.
DISCONNECT POWER BEFORE SERVICING.

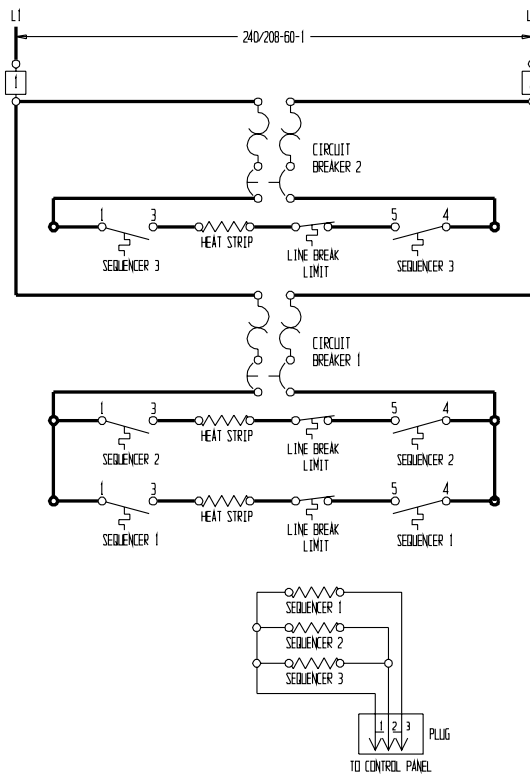


NOTE: REFER TO THE HEATER PACKAGE
INSTRUCTIONS FOR PROPER INSTALLATION

	FACTORY WIRING	FIELD WIRING
Low Voltage	—————	- - - - -
High Voltage	—————	- - - - -

USE COPPER CONDUCTORS
ONLY SUITABLE FOR
AT LEAST 75°C

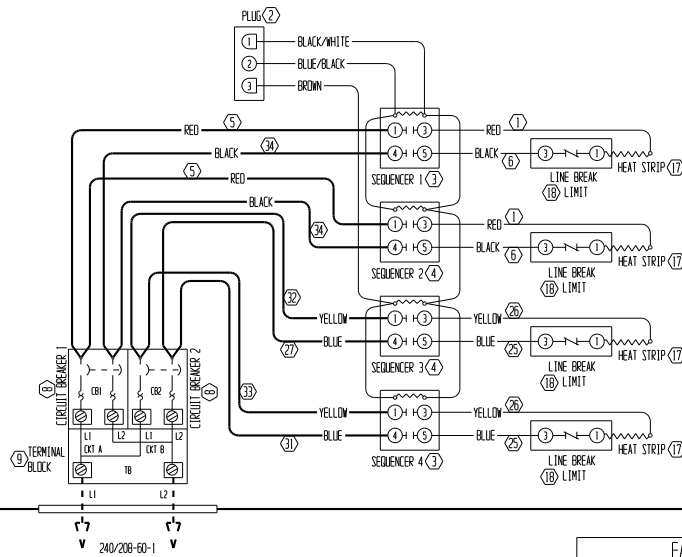
LADDER DIAGRAM



4106-120 A

CONNECTION DIAGRAM

DANGER: ELECTRICAL SHOCK HAZARD.
DISCONNECT POWER BEFORE SERVICING.

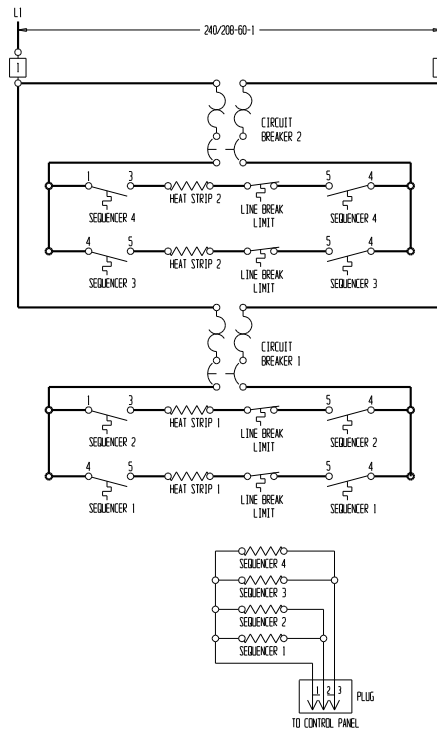


NOTE: REFER TO THE HEATER PACKAGE INSTRUCTIONS FOR PROPER INSTALLATION

	FACTORY WIRING	FIELD WIRING
Low Voltage	_____	-----
High Voltage	_____	-----

USE COPPER CONDUCTORS
ONLY SUITABLE FOR
AT LEAST 75°C

LADDER DIAGRAM



4106-130 B