
INSTALLATION INSTRUCTIONS

Circuit Breaker Kits

Models:

WMCB-01BL	WMCB-05BL
WMCB-02AL	WMCB-06AL
WMCB-02BL	WMCB-06BL
WMCB-03AL	WMCB-07BL
WMCB-03BL	WMCB-08AL
WMCB-04AL	WMCB-08BL
WMCB-04BL	WMCB-09BL
WMCB-05AL	

Pull Disconnect Kits

Models:

WMPD-01CL
WMRD-02CL



Bard Manufacturing Company, Inc.
Bryan, Ohio 43506
www.bardhvac.com

Manual: 2100-558A
Supersedes: 2100-558
Date: 7-10-23

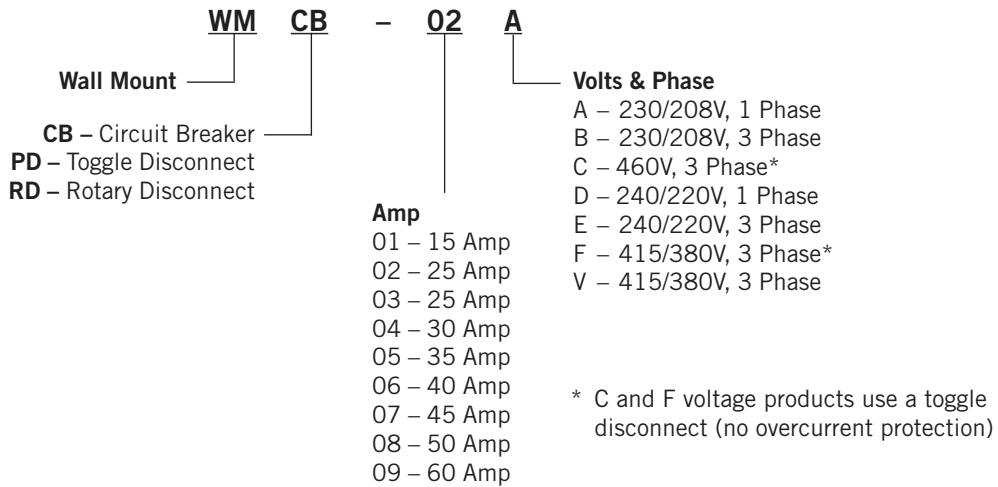
CONTENTS

General Information 3
 Description 3
Installation 5
 Installation..... 5

Figures
 Figure 1A 1-1/2 – 3 Ton Units..... 5
 Figure 1B 3 – 6 Ton Units..... 6
 Figure 2 Serial Plate Remarking Label 7

Tables
 Table 1A Applicable Kits for Listed Models 3
 Table 1B Applicable Kits for Listed Models 4

Nomenclature



GENERAL INFORMATION

Description

WMCB kits are field-installable circuit breaker kits suitable for use with 0 KW Bard wall mount heat pumps and air conditioners (-A and -B electrical versions).

WMPD kits are field-installable toggle disconnect kits suitable for use with 0 KW Bard wall mount heat pumps and air conditioners (-C electrical versions).

WMRD kits are field-installable rotary disconnect kits suitable for use with 0 KW Bard wall mount heat pumps and air conditioners (-C electrical versions).

See Table 1A below and Table 1B on page 4 for applicable kits for listed models.

TABLE 1A
Applicable Kits for Listed Models

	WMCB-02AL	WMCB-02BL	WMCB-03AL	WMCB-03BL	WMCB-04AL	WMCB-05AL	WMPD-01CL
W18LB-A0Z	X						
W18LBPA0Z	X						
W18LY-A0Z	X						
W18LYPA0Z	X						
W24LB-A0Z			X				
W24LB-B0Z		X					
W24LB-F0Z							X
W24LBPA0Z			X				
W24LBPB0Z		X					
W24LBPFOZ							X
W24LY-A0Z			X				
W24LY-B0Z		X					
W24LY-F0Z							X
W24LYPA0Z			X				
W24LYPB0Z		X					
W24LYPFOZ							X
W30LB-A0Z						X	
W30LB-B0Z		X					
W30LB-C0Z							X
W30LB-F0Z							X
W30LBPA0Z						X	
W30LBPB0Z		X					
W30LBPC0Z							X
W30LBPFOZ							X
W30LBRC0Z							X
W30LY-A0Z					X		
W30LY-B0Z		X					
W30LY-C0Z							X
W30LY-F0Z							X
W30LYPA0Z					X		
W30LYPB0Z		X					
W30LYPC0Z							X
W30LYPFOZ							X
W30LYRC0Z							X

TABLE 1B
Applicable Kits for Listed Models

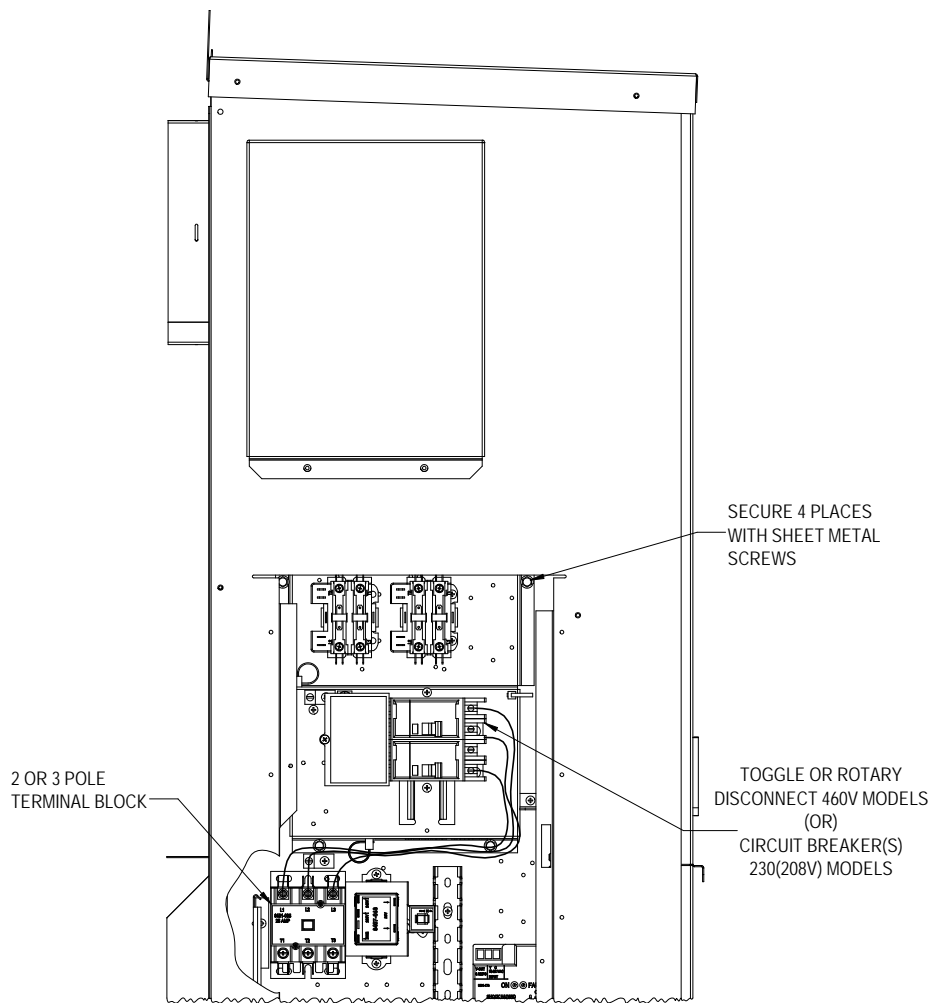
	WMCB-02AL	WMCB-02BL	WMCB-03AL	WMCB-03BL	WMCB-04AL	WMCB-05AL	WMPD-01CL
W36LB-A0Z						X	
W36LB-B0Z				X			
W36LB-C0Z							X
W36LB-F0Z							X
W36LBPA0Z						X	
W36LBPB0Z				X			
W36LBPC0Z							X
W36LBPF0Z							X
W36LY-A0Z						X	
W36LY-B0Z				X			
W36LY-C0Z							X
W36LY-F0Z							X
W36LYPA0Z						X	
W36LYPB0Z				X			
W36LYPC0Z							X
W36LYPF0Z							X

INSTALLATION

Installation

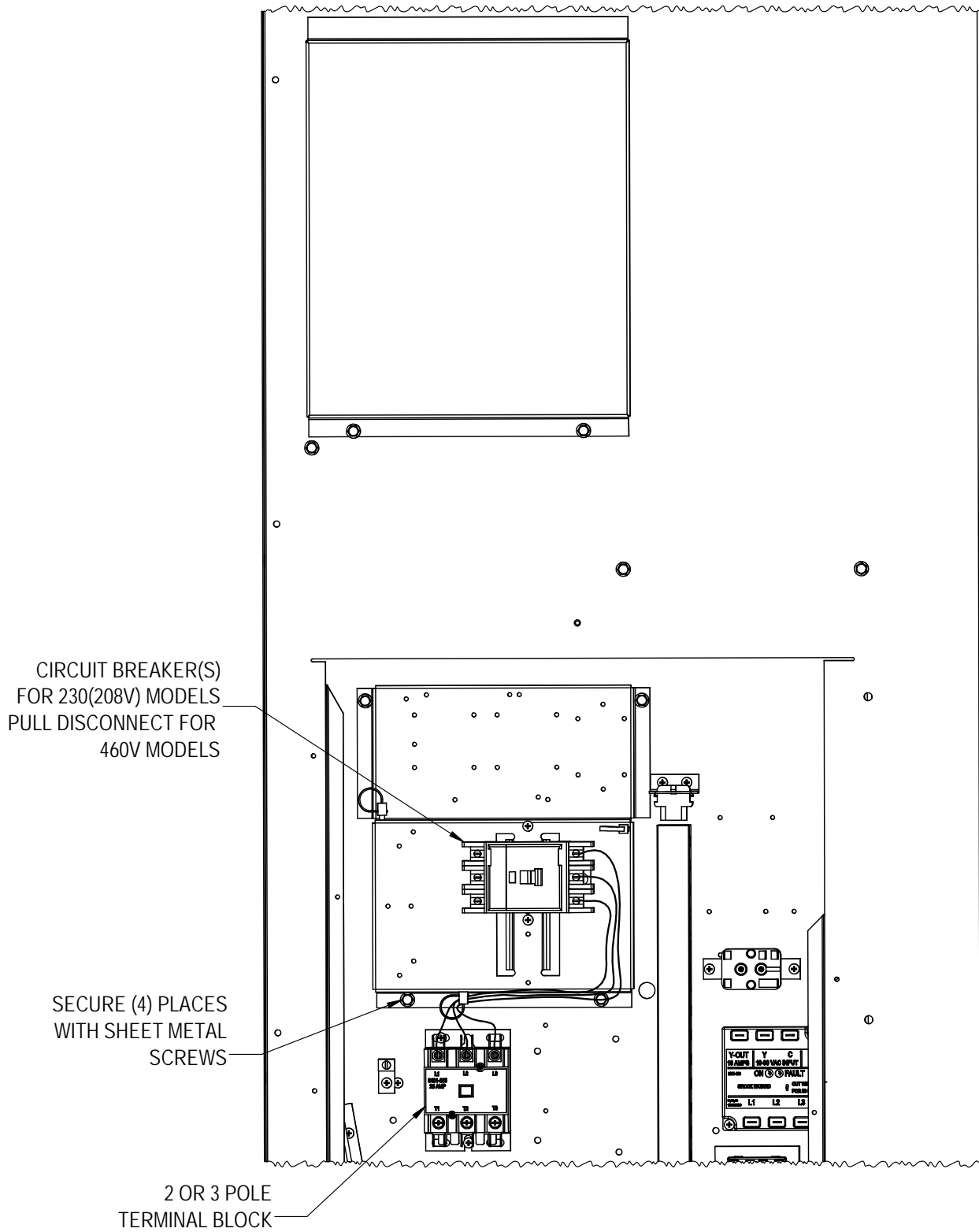
1. Disconnect all power to unit. Remove control panel inner and outer covers.
2. Before installation, check unit serial plate to make sure the circuit breaker or disconnect kit to be installed is listed as a kit suitable for use with the unit.
3. Mount circuit breaker or disconnect assembly in position as shown in Figures 1A (below) and 1B (page 6) with screws provided.
4. Connect red compressor supply lead to L1 of terminal block. Connect black compressor supply lead to L2 of terminal block. If 3-phase unit, connect yellow supply lead to L3 of terminal block. See Figures 1A and 1B and wiring diagram (included with kit).
5. Connect field wiring to circuit breakers.
6. Attach adhesive wiring diagram directly above unit wiring diagram on inner control panel cover.
7. Recheck wiring. Break out appropriate circuit breaker tabs on inner control panel cover to allow trip lever to protrude. On disconnect kit, remove blank-off plate on inner control panel cover.
8. Resupply power to the unit and check for proper operation.
9. Remark serial plate with self-adhesive label attached to the front of this manual (see Figure 2 on page 7).

FIGURE 1A
1-1/2 – 3 Ton Wall Mounts



MIS-2909

FIGURE 1B
3-1/2 – 6 Ton Wall Mounts



MIS-2908

FIGURE 2
Serial Plate Remarking Label

CIRCUIT BREAKER OR PULL DISCONNECT KIT LISTED HERE

{ x }	{ }	{ }	{ }	{ }	{ }	{ }	{ }	{ }	{ }
{ }	{ x }	{ }	{ }	{ }	{ }	{ }	{ }	{ }	{ }
{ }	{ }	{ x }	{ }	{ }	{ }	{ }	{ }	{ }	{ }
{ }	{ }	{ }	{ x }	{ }	{ }	{ }	{ }	{ }	{ }
{ }	{ }	{ }	{ }	{ x }	{ }	{ }	{ }	{ }	{ }
{ }	{ }	{ }	{ }	{ }	{ x }	{ }	{ }	{ }	{ }
{ }	{ }	{ }	{ }	{ }	{ }	{ x }	{ }	{ }	{ }
{ }	{ }	{ }	{ }	{ }	{ }	{ }	{ x }	{ }	{ }
{ }	{ }	{ }	{ }	{ }	{ }	{ }	{ }	{ x }	{ }

ASSURE THAT SERIAL PLATE IS CLEAN AND DRY, REMOVE APPROPRIATE LABEL STRIP FOR KW REQUIRED AND REMARK SERIAL PLATE AS SHOWN FOR THE CIRCUIT BREAKER KIT THAT IS INSTALLED

BARD MANUFACTURING CO. INC., 1914 RANDOLPH DRIVE

(1)
APPROVED
HEATER

MODEL	PACKAGE	VAC~	HZ	PH
{ } W36AY-A00	NONE	230/208	60	1
{ } W36AY-A0Z	WMCB-05A	230/208	60	1
{ X } W36AY-A05	EHWA024A-A05	230/208	60	1
{ } W36AY-A10	EHWA030A-A10	230/208	60	1
{ } W36AY-A15	EHWA036A-A15	230/208	60	1

SHORT-CIRCUIT CUR
BRANCH CIRCUIT SELECT CURRENT 16.7A OPER

SERIAL NUMBER XXXXXXXXXXXXXXXXXXXX=XX

SUITABLE FOR PARTIAL OUTDOOR EXPOSURE IN THROUGH THE WALL
ALL MOTORS ARE THERMALLY PROTECTED

	VAC	HZ	PH	HP	FLA
COMPRESSOR	230/208	60	1		
OUTDOOR MOTOR	230/208	60	1	1/5	1.4
INDOOR MOTOR	230/208	60	1	1/2	2.7
ERV	230/208	60	1		2.2 (C
HEATER PACKAGE				KW	FLA
EHWA024A-A05	230/208	60	1	4.6/3.8	20.0/18
EHWA030A-A10	230/208	60	1	9.2/7.5	40.0/34
EHWA036A-A15	230/208	60	1	13.8/11.3	60.0/5

MIS-405 A