

---

# INSTALLATION INSTRUCTIONS

---

## Circuit Breaker Kits

Models:

WMCB-01BL	WMCB-05BL
WMCB-02AL	WMCB-06AL
WMCB-02BL	WMCB-06BL
WMCB-03AL	WMCB-07BL
WMCB-03BL	WMCB-08AL
WMCB-04AL	WMCB-08BL
WMCB-04BL	WMCB-09BL
WMCB-05AL	

## Pull Disconnect Kits

Models:

WMPD-01CL  
WMRD-02CL



*Climate Control Solutions*

Bard Manufacturing Company, Inc.  
Bryan, Ohio 43506  
[www.bardhvac.com](http://www.bardhvac.com)

Manual: 2100-558B  
Supersedes: 2100-558A  
Date: 5-9-24

# CONTENTS

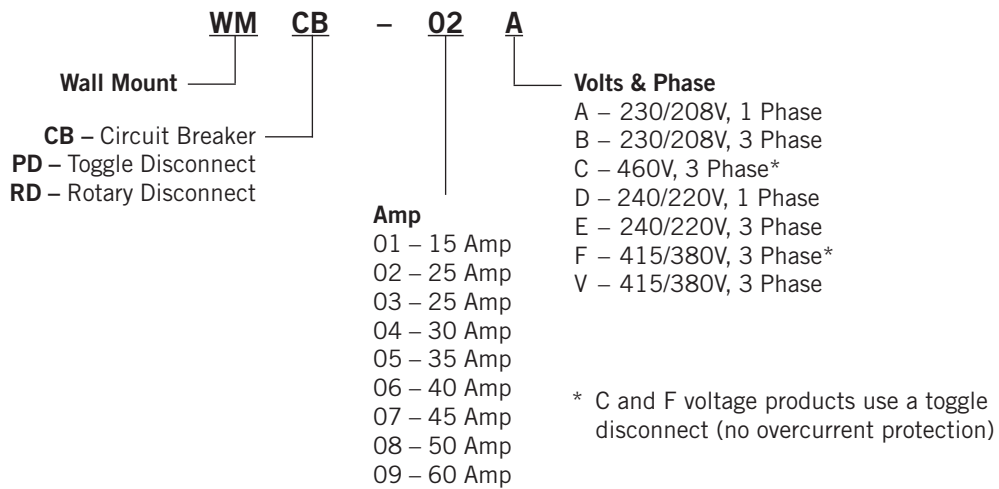
---

**General Information** ..... **3**  
 Description ..... 3  
**Installation** ..... **4**  
 Installation..... 4

**Figures**  
 Figure 1A 1-1/2 – 3 Ton Units..... 4  
 Figure 1B 3 – 6 Ton Units..... 5  
 Figure 2 Serial Plate Remarking Label ..... 6

**Tables**  
 Table 1 Applicable Kits for Listed Models ..... 3

## Nomenclature



# GENERAL INFORMATION

## Description

WMCB kits are field-installable circuit breaker kits suitable for use with 0 kW Bard wall mount heat pumps and air conditioners (-A and -B electrical versions).

WMPD kits are field-installable toggle disconnect kits suitable for use with 0 kW Bard wall mount heat pumps and air conditioners (-C electrical versions).

WMRD kits are field-installable rotary disconnect kits suitable for use with 0 kW Bard wall mount heat pumps and air conditioners (-C electrical versions).

See Table 1 for applicable kits for listed models.

**TABLE 1**  
**Applicable Kits for Listed Models**

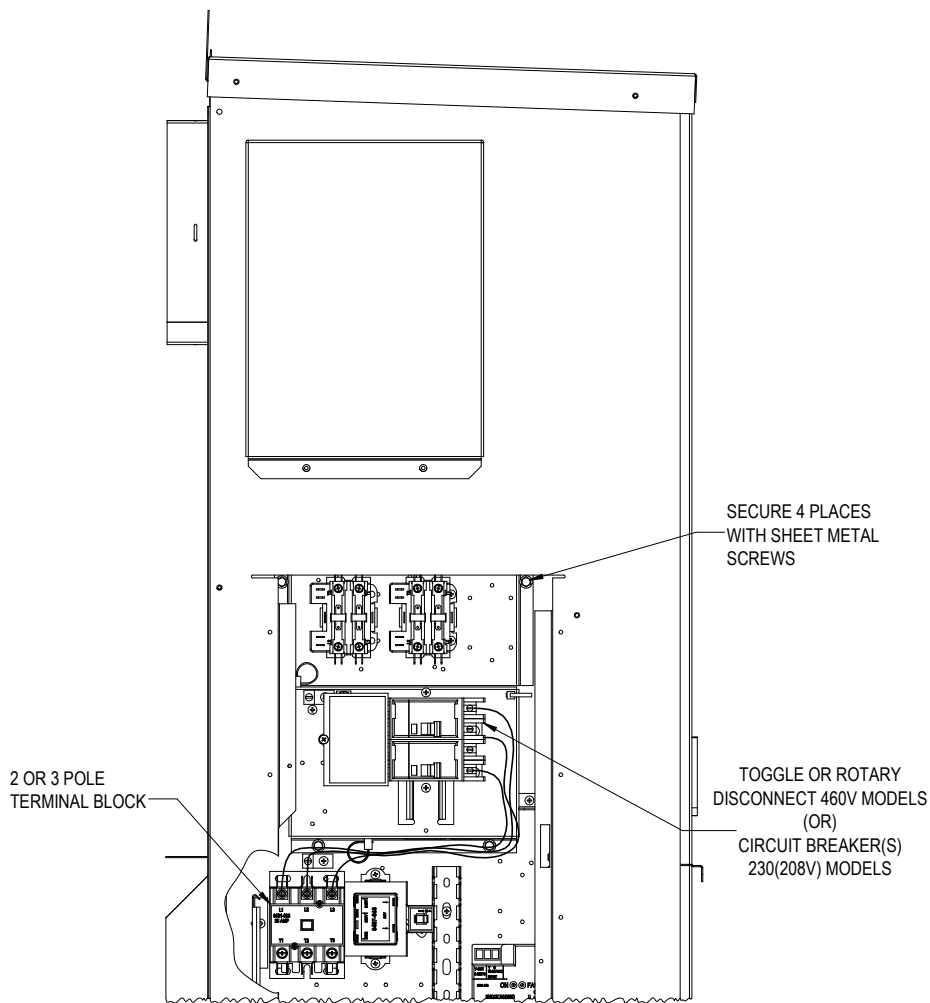
	WMCB-02AL	WMCB-02BL	WMCB-03AL	WMCB-03BL	WMCB-04AL	WMCB-05AL	WMPD-01CL		WMCB-02AL	WMCB-02BL	WMCB-03AL	WMCB-03BL	WMCB-04AL	WMCB-05AL	WMPD-01CL
W18LB-A0Z	X							W30LY-A0Z					X		
W18LBPA0Z	X							W30LY-B0Z		X					
W18LF-A0Z	X							W30LY-C0Z							X
W18LY-A0Z	X							W30LY-F0Z							X
W18LYPA0Z	X							W30LYPA0Z					X		
W24LB-A0Z			X					W30LYPB0Z		X					
W24LB-B0Z		X						W30LYPC0Z							X
W24LB-F0Z							X	W30LYPFOZ							X
W24LBPA0Z			X					W30LYRC0Z							X
W24LBPB0Z		X						W36LB-A0Z						X	
W24LBPF0Z							X	W36LB-B0Z				X			
W24LF-A0Z			X					W36LB-C0Z							X
W24LF-B0Z		X						W36LB-F0Z							X
W24LF-F0Z							X	W36LBPA0Z						X	
W24LY-A0Z			X					W36LBPB0Z				X			
W24LY-B0Z		X						W36LBPC0Z							X
W24LY-F0Z							X	W36LBPF0Z							X
W24LYPA0Z			X					W36LF-A0Z						X	
W24LYPB0Z		X						W36LF-B0Z				X			
W24LYPFOZ							X	W36LF-C0Z							X
W30LB-A0Z						X		W36LF-F0Z							X
W30LB-B0Z		X						W36LFRC0Z							X
W30LB-C0Z							X	W36LY-A0Z						X	
W30LB-F0Z							X	W36LY-B0Z				X			
W30LBPA0Z						X		W36LY-C0Z							X
W30LBPB0Z		X						W36LY-F0Z							X
W30LBPC0Z							X	W36LYPA0Z						X	
W30LBPF0Z							X	W36LYPB0Z				X			
W30LBRC0Z							X	W36LYPC0Z							X
W30LF-A0Z			X					W36LYPFOZ							X
W30LF-B0Z		X													
W30LF-C0Z							X								
W30LF-F0Z							X								

# INSTALLATION

## Installation

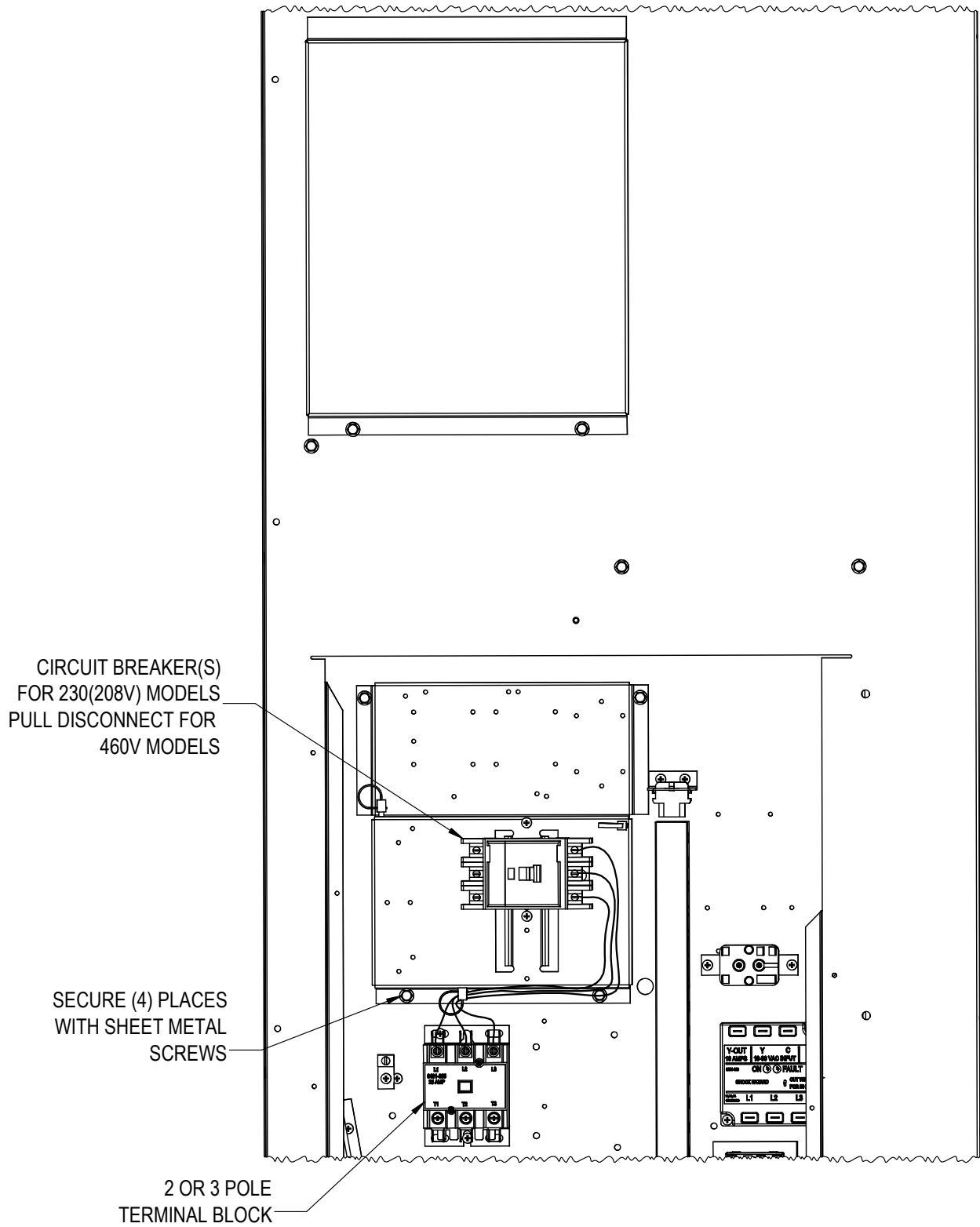
1. Disconnect all power to unit. Remove control panel inner and outer covers.
2. Before installation, check unit serial plate to make sure the circuit breaker or disconnect kit to be installed is listed as a kit suitable for use with the unit.
3. Mount circuit breaker or disconnect assembly in position as shown in Figures 1A and 1B with screws provided.
4. Connect red compressor supply lead to L1 of terminal block. Connect black compressor supply lead to L2 of terminal block. If 3-phase unit, connect yellow supply lead to L3 of terminal block. See Figures 1A and 1B and wiring diagram (included with kit).
5. Connect field wiring to circuit breakers.
6. Attach adhesive wiring diagram directly above unit wiring diagram on inner control panel cover.
7. Recheck wiring. Break out appropriate circuit breaker tabs on inner control panel cover to allow trip lever to protrude. On disconnect kit, remove blank-off plate on inner control panel cover.
8. Resupply power to the unit and check for proper operation.
9. Remark serial plate with self-adhesive label attached to the front of this manual (see Figure 2 on page 6).

**FIGURE 1A**  
**1-1/2 – 3 Ton Wall Mounts**



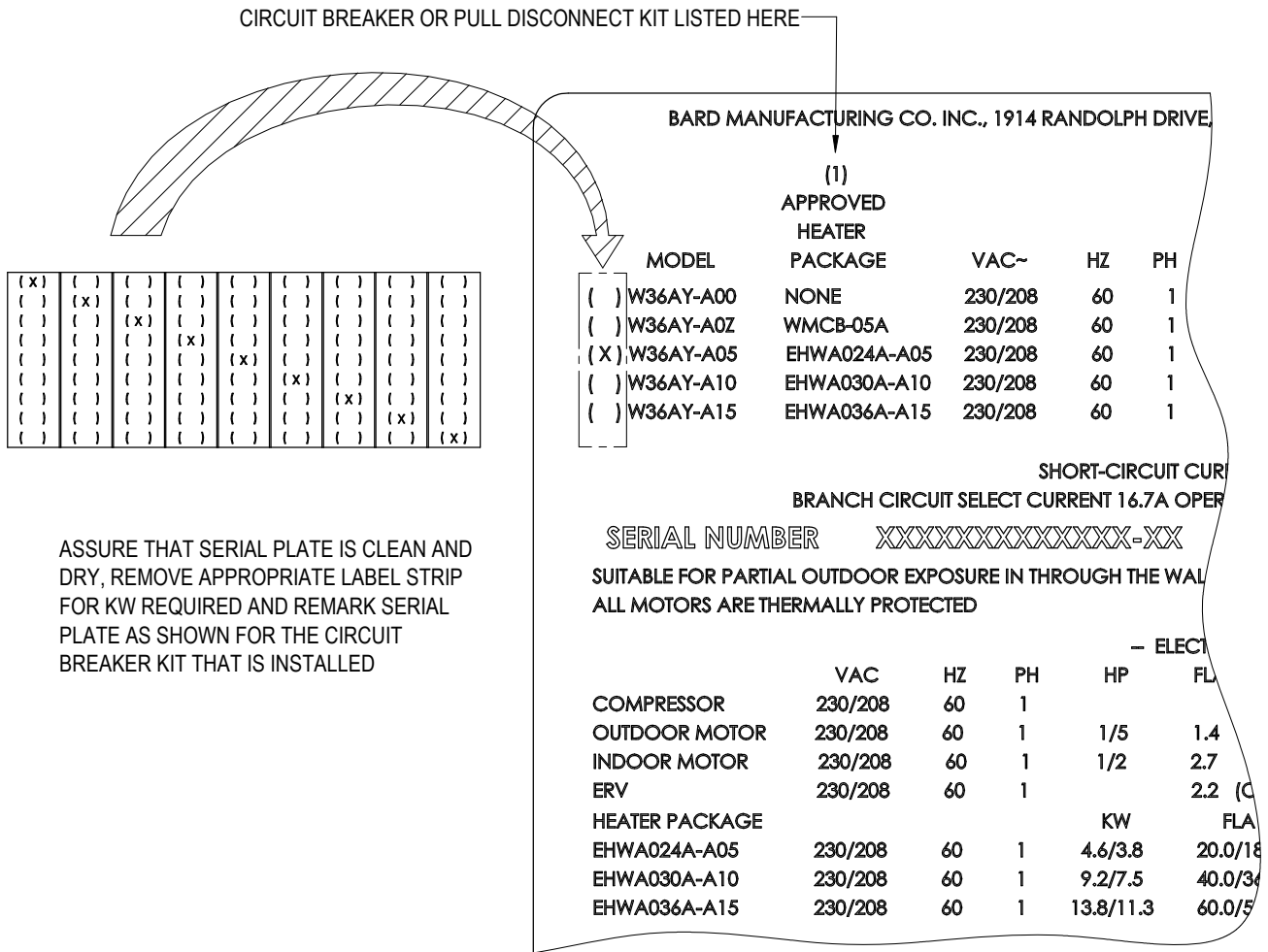
MIS-2909

**FIGURE 1B**  
**3-1/2 – 6 Ton Wall Mounts**



MIS-2908

**FIGURE 2  
Serial Plate Marking Label**



ASSURE THAT SERIAL PLATE IS CLEAN AND DRY, REMOVE APPROPRIATE LABEL STRIP FOR KW REQUIRED AND REMARK SERIAL PLATE AS SHOWN FOR THE CIRCUIT BREAKER KIT THAT IS INSTALLED

MIS-405 A