

REPLACEMENT PARTS MANUAL

SPLIT
HEAT PUMPS
MODELS 18HPQ5, 24HPQ5
18HPQ6, 24HPQ6

Manual 2110-051

Revision A

Date 11-15-89

Supersedes 7-11-89

* GENERAL NOTES *

*Revised and/or additional pages may be issued from time to time.
*A complete and current manual consists of pages dated as shown in the following index.

** INDEX **

<u>Page Description</u>	<u>Page</u>	<u>Date</u>	<u>Supersedes</u>
Functional and Cabinet Components--Exploded View	1	7-11-89	
" " " --Usage List	2	11-15-89	7-11-89
Control Panel--Layout	3	7-11-89	
" " --Usage List	4	11-15-89	7-11-89

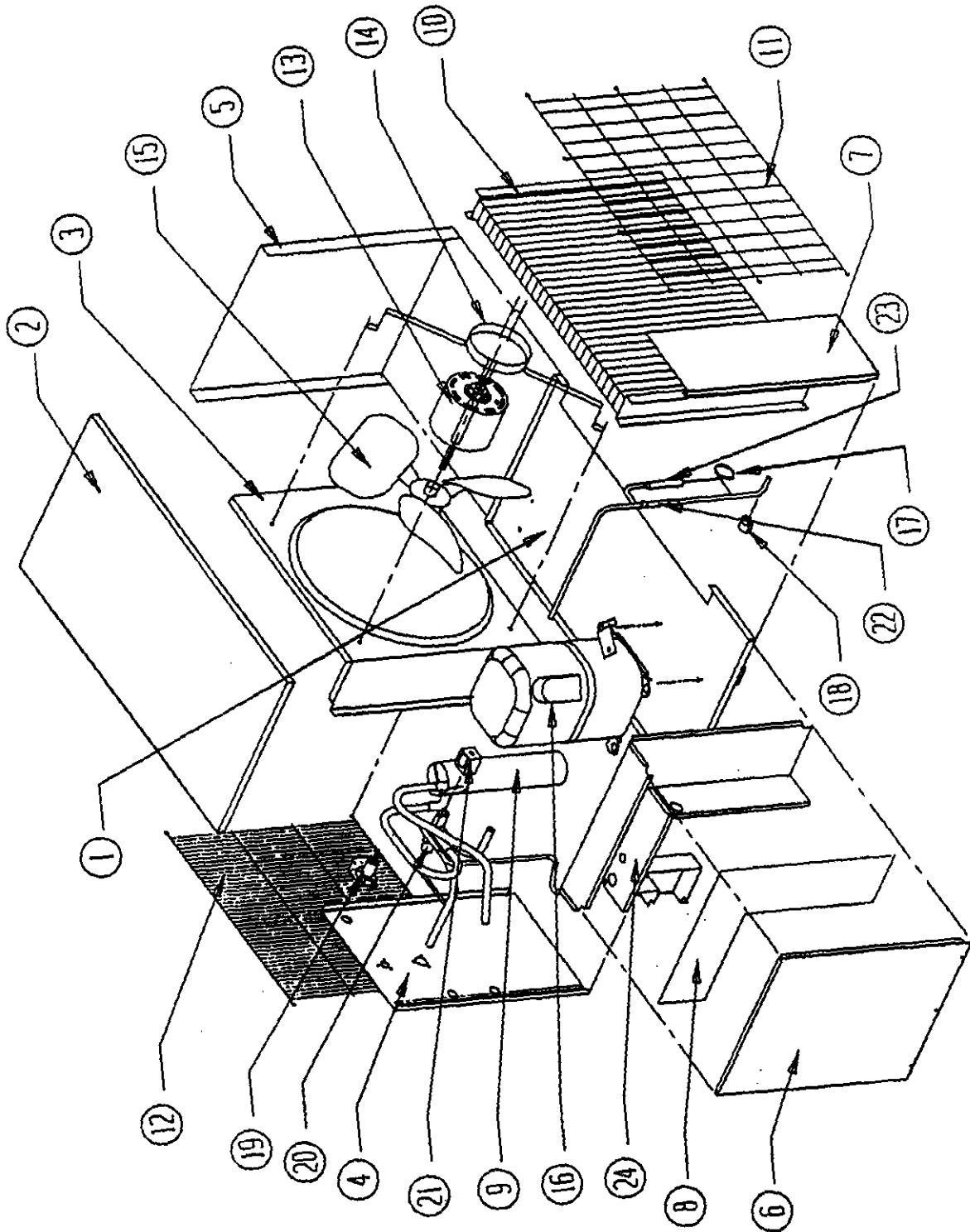
*** IMPORTANT ***

Contact the installing and/or local Bard distributor for all parts requirements. Make sure you have the complete model and serial number available from the unit rating plate.

BARD MANUFACTURING COMPANY

BRYAN, OHIO 43506

FUNCTIONAL AND CABINET COMPONENTS



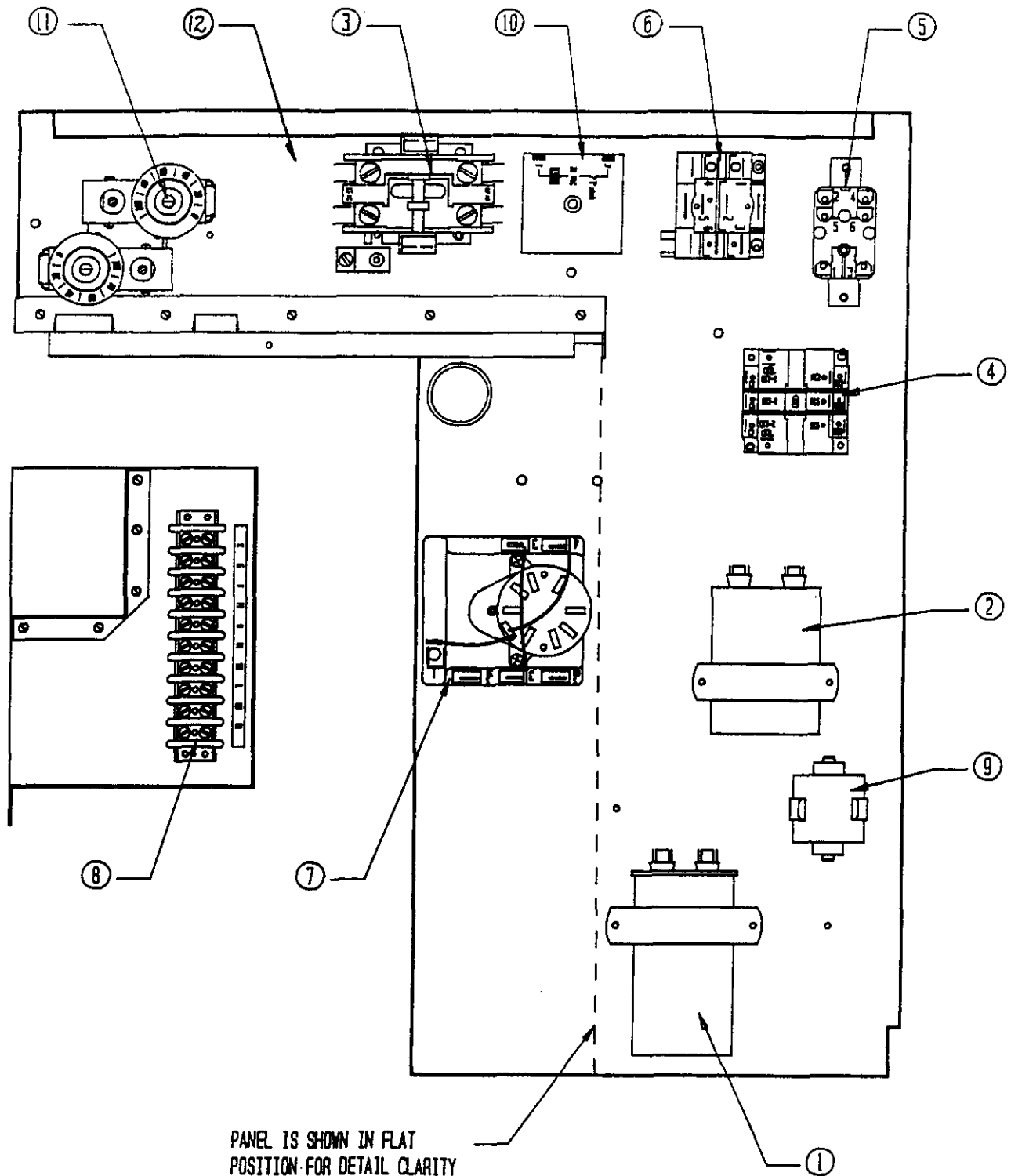
Date: 7-11-89
Supersedes:

FUNCTIONAL AND CABINET COMPONENTS

Dwg. No.	Part No.	Description	1	2	2	1	2	2
			8	4	4	8	4	4
			H	H	H	H	H	H
			P	P	P	P	P	P
			Q	Q	Q	Q	Q	Q
			5	5	5	6	6	6
					D			D
1	127-016	Base	X	X	X	X	X	X
2	106-015	Top	X	X	X	X	X	X
3	124-005	Fan Shroud	X	X	X	X	X	X
4	148-027	Corner--Compressor	X	X	X	X	X	X
5	100-122	Side	X	X	X	X	X	X
6	152-014	Door--Compressor Access	X	X	X	X	X	X
7	148-037	Corner--Condenser	X	X	X	X	X	X
8	132-020	Control Panel Cover	X	X	X	X	X	X
9	5202-015	Accumulator					X	X
9	5202-014	Accumulator	X	X	X	X		
10	5051-008	Condenser Coil	X	X	X	X	X	X
11	7051-009	Condenser Grille	X	X	X	X	X	X
12	7051-010	Inlet Grille	X	X	X	X	X	X
13	8103-008	Motor--Fan 1/5	X	X		X	X	
13	8103-010	Motor Fan 1/5			X			X
14	8200-001	Motor Mount--Fan	X	X	X	X	X	X
15	5151-001	Fan Blade TF1839	X	X	X	X	X	X
16	8000-076	Compressor			X			X
16	8000-100	Compressor AM5517F	X			X		
16	8000-101	Compressor R23B223ABC		X			X	
17	800-0125	Capillary Tube Assembly	X					
17	800-0126	Capillary Tube Assembly		X	X			
17	800-0163	Cap Tube Assembly					X	X
17	800-0158	Cap Tube Assembly				X		
18	8408-017	Defrost Thermostat	X	X	X	X	X	X
19	8406-010	High Pressure Switch	X	X	X	X	X	X
20	5650-005	Reversing Valve	X	X	X	X		
20	5650-013	Reversing Valve					X	X
21	5650-008	Solenoid Coil	X	X	X	X	X	X
22	5651-036	Check Valve	X	X	X	X	X	X
23	5210-002	Strainer	X	X	X	X	X	X
24	*	Control Panel *See control panel drawing	X	X	X	X	X	X

Date: 11-15-89
Supersedes: 7-11-89

CONTROL PANEL



PANEL IS SHOWN IN FLAT
POSITION FOR DETAIL CLARITY

Date: 7-11-89
Supersedes:

CONTROL PANEL

Dwg. No.	Part No.	Description	1 8 H P Q 5	2 4 H P Q 5	2 4 H P Q 5 D	1 8 H P Q 6	2 4 H P Q 6	2 4 H P Q 6 D
1	8552-007	Capacitor 20/15-370			X			X
1	8552-045	Capacitor 30/370		X			X	
1	8552-027	Capacitor 25/370	X			X		
2	8552-002	Capacitor 5/370	X	X	X	X	X	X
3	8401-007	Contactor--Comp. 25A	X	X	X	X	X	X
4	8201-047	Relay Defrost	X	X	X	X	X	X
5	8201-015	Relay--Emergency Heat	X	X	X	X	X	X
6	8201-024	Relay--Compressor Fault	X	X		X	X	
7	8612-012	Defrost Timer	X	X	X	X	X	X
8	8607-011	Terminal Board	X	X	X	X	X	X
9	SK109		<--Field Installed---->					
10	CGAH-4	5 Min. Time Delay	<--Field Installed---->					
11	8408-008	Outdoor Thermostat	<--Field Installed---->					
12	117-033	Control Panel	X	X	X	X	X	X
	4026-110	Wiring Diagram	X	X		X	X	
	4026-410	Wiring Diagram			X			X

Date: 11-15-89
Supersedes: 7-11-89

