

REPLACEMENT PARTS MANUAL

SPLIT
HEAT PUMPS
MODELS 18HPQ5, 24HPQ5
18HPQ6, 24HPQ6

Manual 2110-051

Revision B

Date 9-04-90

Supersedes 11-15-90

* GENERAL NOTES *

*Revised and/or additional pages may be issued from time to time.
*A complete and current manual consists of pages dated as shown in the following index.

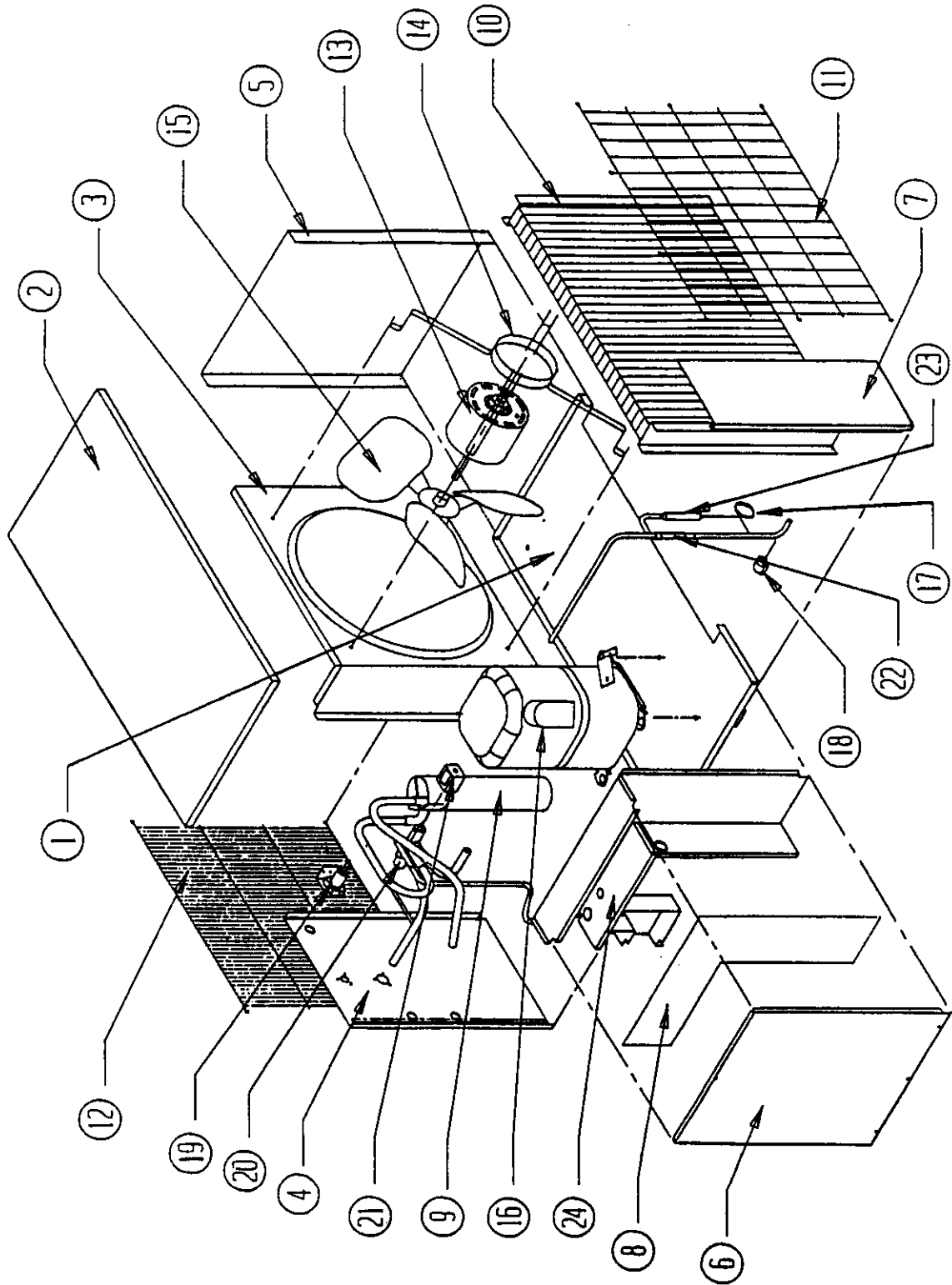
** INDEX **

<u>Page Description</u>	<u>Page</u>	<u>Date</u>	<u>Supersedes</u>
Functional and Cabinet Components--Exploded View	1	7-11-89	
" " " --Usage List	2	9-04-90	11-15-89
Control Panel--Layout	3	7-11-89	
" " --Usage List	4	9-04-90	11-15-89

*** IMPORTANT ***

Contact the installing and/or local Bard distributor for all parts requirements. Make sure you have the complete model and serial number available from the unit rating plate.

FUNCTIONAL AND CABINET COMPONENTS



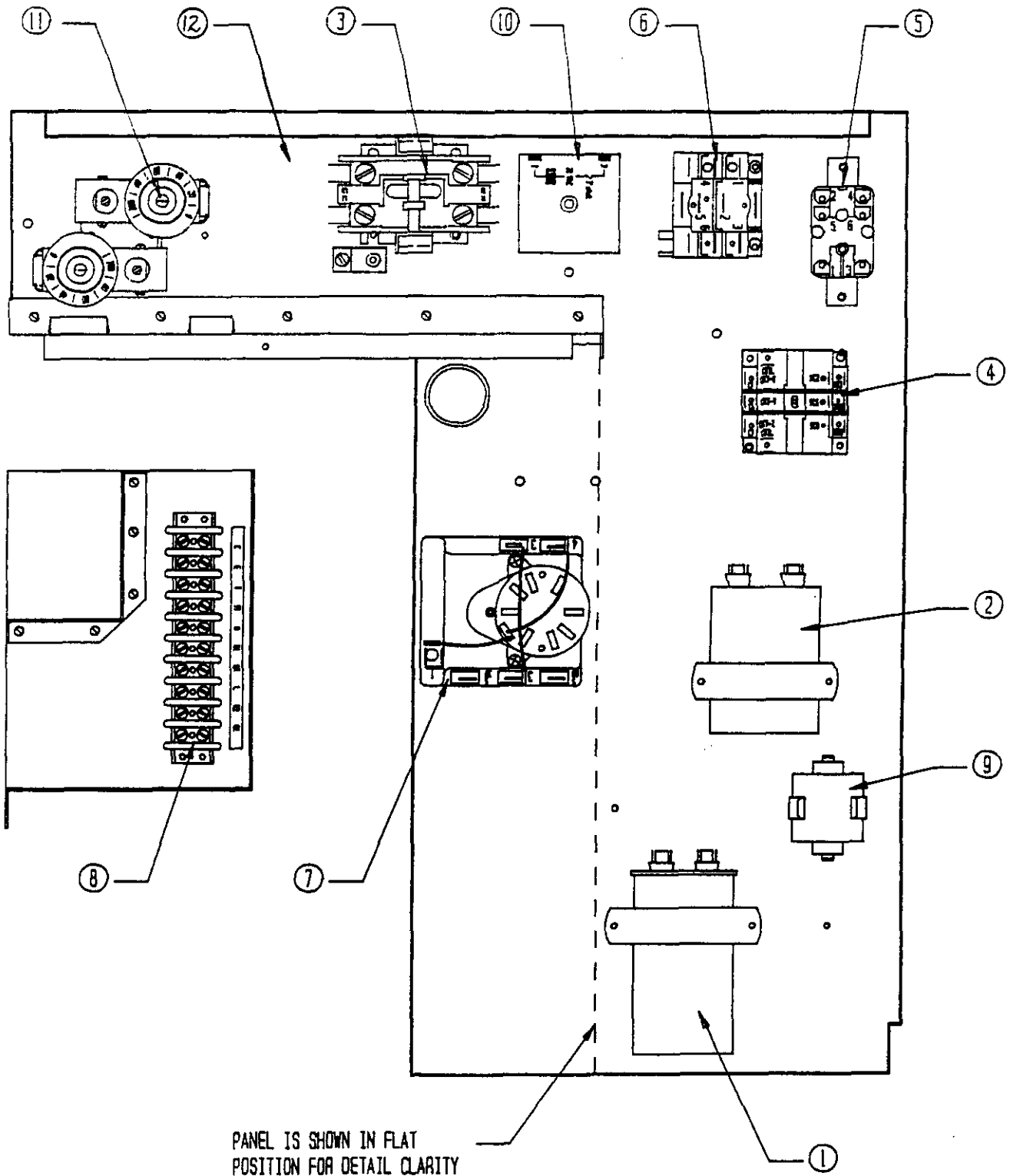
Date: 7-11-89
Supersedes:

FUNCTIONAL AND CABINET COMPONENTS

Dwg. No.	Part No.	Description	1	2	2	1	2	2
			8	4	4	8	4	4
			H	H	H	H	H	H
			P	P	P	P	P	P
			Q	Q	Q	Q	Q	Q
			5	5	5	6	6	6
					D			D
1	127-016	Base	X	X	X	X	X	X
2	106-015	Top	X	X	X	X	X	X
3	124-005	Fan Shroud	X	X	X	X	X	X
4	148-027	Corner--Compressor	X	X	X	X	X	X
5	100-122	Side	X	X	X	X	X	X
6	152-014	Door--Compressor Access	X	X	X	X	X	X
7	148-037	Corner--Condenser	X	X	X	X	X	X
8	132-020	Control Panel Cover	X	X	X	X	X	X
9	5202-015	Accumulator					X	X
9	5202-014	Accumulator	X	X	X	X		
10	5051-008	Condenser Coil	X	X	X	X	X	X
11	7051-009	Condenser Grille	X	X	X	X	X	X
12	7051-010	Inlet Grille	X	X	X	X	X	X
13	8103-008	Motor--Fan 1/5	X	X		X	X	
13	8103-010	Motor Fan 1/5			X			X
14	8200-001	Motor Mount--Fan	X	X	X	X	X	X
15	5151-001	Fan Blade TF1839	X	X	X	X	X	X
16	8000-076	Compressor			X			
16	8000-100	Compressor AM5517F	X			X		
16	8000-101	Compressor H23B223ABC		X			X	
16	8000-112	Compressor AW105KT-014-A4						X
17	800-0125	Capillary Tube Assembly	X					
17	800-0126	Capillary Tube Assembly		X	X			
17	800-0163	Cap Tube Assembly					X	X
17	800-0158	Cap Tube Assembly				X		
18	8408-017	Defrost Thermostat	X	X	X	X	X	X
19	8406-010	High Pressure Switch	X	X	X	X	X	X
20	5650-005	Reversing Valve	X	X	X	X		
20	5650-013	Reversing Valve					X	X
21	5650-008	Solenoid Coil	X	X	X	X	X	X
22	5651-036	Check Valve	X	X	X	X	X	X
23	5210-002	Strainer	X	X	X	X	X	X
24	*	Control Panel *See control panel drawing	X	X	X	X	X	X

Date: 9-04-90
Supersedes: 11-15-89

CONTROL PANEL



Date: 7-11-89
Supersedes:

CONTROL PANEL

Dwg. No.	Part No.	Description	1 8 H P Q 5	2 4 H P Q 5	2 4 H P Q 5 D	1 8 H P Q 6	2 4 H P Q 6	2 4 H P Q 6 D
1	8552-007	Capacitor 20/15-370			X			
1	8552-032	Capacitor 35-370						X
1	8552-045	Capacitor 30/370		X			X	
1	8552-027	Capacitor 25/370	X			X		
2	8552-002	Capacitor 5/370	X	X	X	X	X	X
3	8401-007	Contactora--Comp. 25A	X	X	X	X	X	X
4	8201-047	Relay Defrost	X	X	X	X	X	X
5	8201-015	Relay--Emergency Heat	X	X	X	X	X	X
6	8201-024	Relay--Compressor Fault	X	X		X	X	
7	8612-012	Defrost Timer	X	X	X	X	X	X
8	8607-011	Terminal Board	X	X	X	X	X	X
9	SK109		<--Field Installed---->					
10	CGAH-4	5 Min. Time Delay	<--Field Installed---->					
11	8408-008	Outdoor Thermostat	<--Field Installed---->					
12	117-033	Control Panel	X	X	X	X	X	X
	4026-110	Wiring Diagram	X	X		X	X	
	4026-410	Wiring Diagram			X			X

Date: 9-04-89
Supersedes: 11-15-89

