

REPLACEMENT PARTS MANUAL

SPLIT HEAT PUMPS

MODELS: 18HPQ5, 24HPQ5, 18HPQ6, 24HPQ6

Manual 2110-051

Revision D

Date 09-30-94

Supersedes 04-06-93

* GENERAL NOTES *

*Revised and/or additional pages may be issued from time to time.
*A complete and current manual consists of pages dated as shown in the following index.

** INDEX **

<u>Page Description</u>	<u>Page</u>	<u>Date</u>	<u>Supersedes</u>
Functional and Cabinet Components--Exploded View	1	07-11-89	
" " " --Usage List	2	04-06-93	09-04-90
Control Panel--Layout	3	07-11-89	
" " --Usage List	4	09-30-94	04-06-93

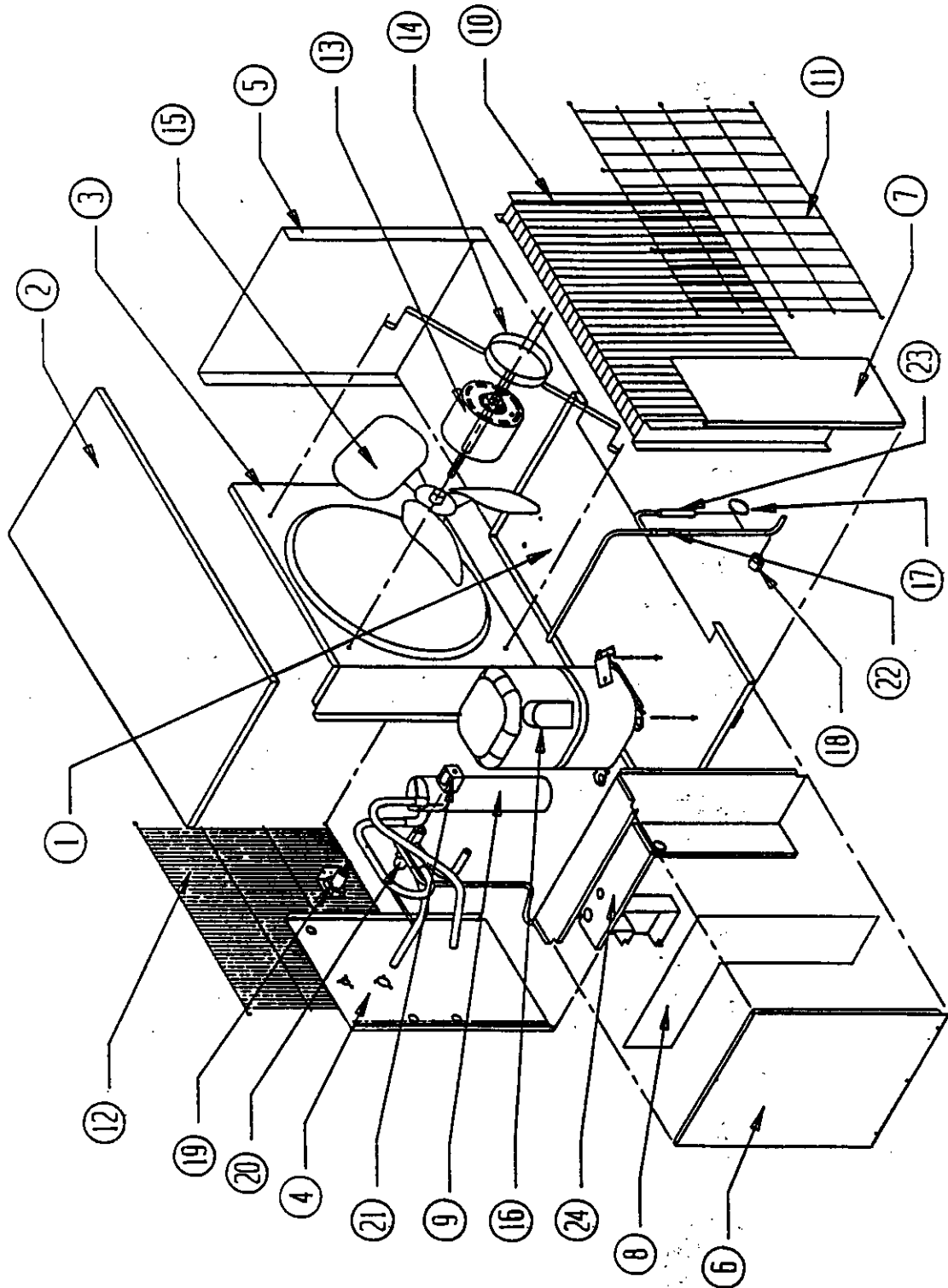
*** IMPORTANT ***

Contact the installing and/or local Bard distributor for all parts requirements. Make sure you have the complete model and serial number available from the unit rating plate.

BARD MANUFACTURING COMPANY

BRYAN, OHIO 43506

FUNCTIONAL AND CABINET COMPONENTS



Date: 7-11-89
Supersedes:

FUNCTIONAL AND CABINET COMPONENTS

Dwg. No.	Part No.	Description	1 8 H P Q 6	2 4 H P Q 6	2 4 H P Q 6 D
1	127-016	Base	X	X	X
2	106-015	Top	X	X	X
3	124-005	Fan Shroud	X	X	X
4	148-027	Corner--Compressor	X	X	X
5	100-122	Side	X	X	X
6	152-014	Door--Compressor Access	X	X	X
7	148-037	Corner--Condenser	X	X	X
8	132-020	Control Panel Cover	X	X	X
9	5202-015	Accumulator		X	X
9	5202-014	Accumulator	X		
10	5051-008	Condenser Coil	X	X	X
11	7051-009	Condenser Grille	X	X	X
12	7051-010	Inlet Grille	X	X	X
13	8103-008	Motor--Fan 1/5	X	X	
13	8103-010	Motor Fan 1/5			X
14	8200-001	Motor Mount--Fan	X	X	X
15	5151-001	Fan Blade TF1839	X	X	X
16	8000-100	Compressor AM5517F	X		
16	8000-101	Compressor H23B223ABC		X	
16	8000-112	Compressor AM105KT-014-A4			X
17	800-0163	Cap Tube Assembly		X	X
17	800-0158	Cap Tube Assembly	X		
18	8408-016	Defrost Thermostat	X	X	X
19	8406-067	High Pressure Switch	X	X	X
20	5650-005	Reversing Valve (See Note A)	X		
20	5650-013	Reversing Valve (See Note A)		X	X
20	5650-017	Reversing Valve (See Note B)	X		
20	5650-020	Reversing Valve (See Note B)		X	X
21	5650-008	Solenoid Coil (See Note A)	X	X	X
21	5650-023	Solenoid Coil	X	X	X
22	5651-036	Check Valve	X	X	X
23	5210-002	Strainer	X	X	X
24	*	Control Panel *See control panel drawing	X	X	X

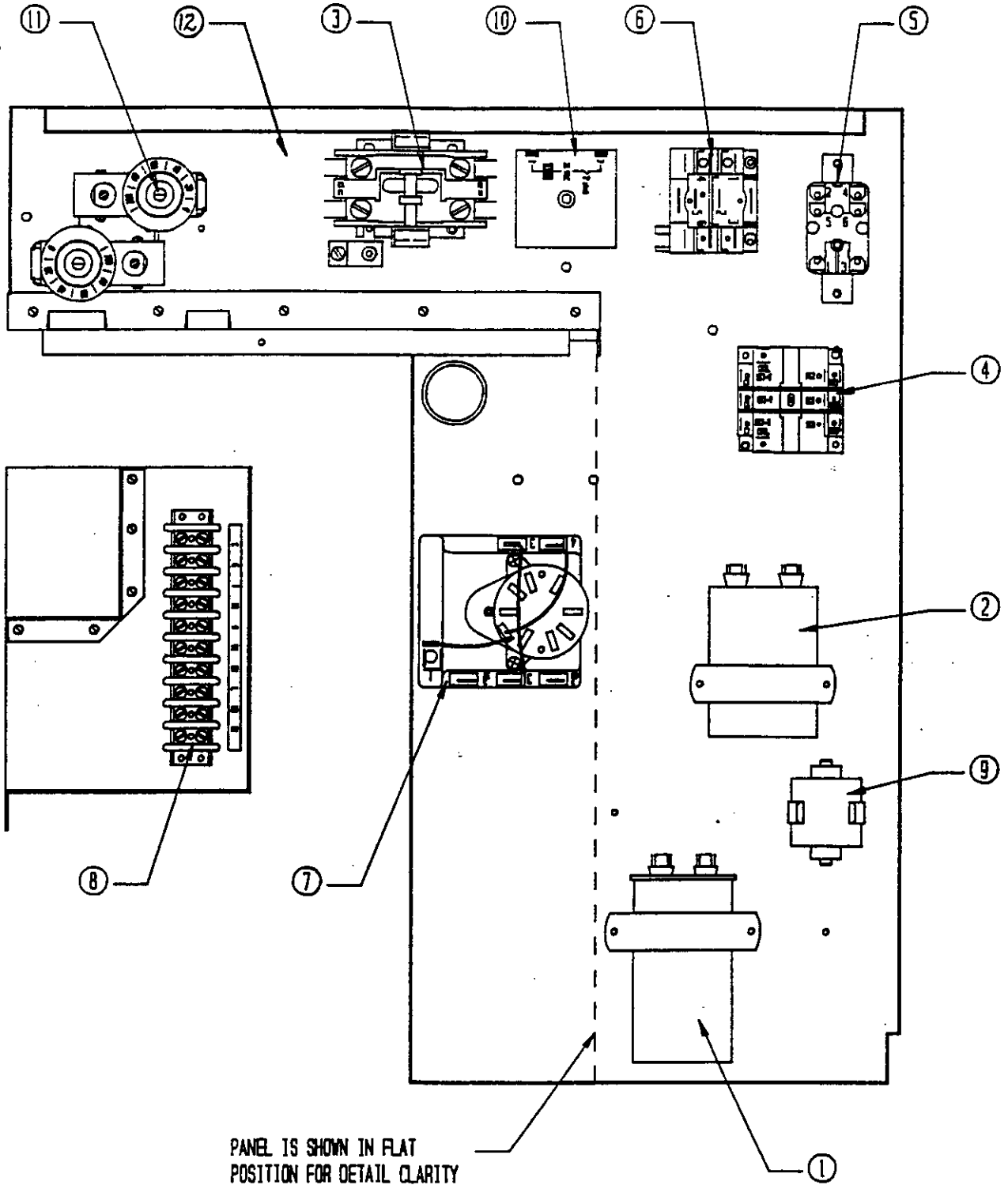
NOTE A: For units produced before date code D93.

NOTE B: For units produced with date code D93 and after.

Date: 04-06-93
Supersedes: 09-04-90

2110-051
Page: 2

CONTROL PANEL



Date: 7-11-89
Supersedes:

CONTROL PANEL

Dwg. No.	Part No.	Description	1 8 H P Q 6	2 4 H P Q 6	2 4 H P Q 6 D
1	8552-032	Capacitor 35-370			X
1	8552-045	Capacitor 30/370		X	
1	8552-027	Capacitor 25/370	X		
2	8552-002	Capacitor 5/370	X	X	X
3	8401-007	Contactora--Comp. 25A	X	X	X
4	8201-071	Relay Defrost	X	X	X
5	8201-015	Relay--Emergency Heat	X	X	X
6	8201-024	Relay--Compressor Fault	X	X	
7	8612-012	Defrost Timer	X	X	X
8	8607-011	Terminal Board	X	X	X
9	SK109				Field Inst.
10	CGAH-4	5 Min. Time Delay			Field Inst.
11	8408-008	Outdoor Thermostat			Field Inst.
12	117-033	Control Panel	X	X	X
	4026-110	Wiring Diagram	X	X	
	4026-410	Wiring Diagram			X

Date: 09-30-94
Supersedes: 04-06-83