

---

# REPLACEMENT PARTS MANUAL

# WALL MOUNTED GAS/ELECTRIC ECONOMIZER

Model: **WGSJIFM-5**

---

## General Notes

- Revised and/or additional pages may be issued from time to time.
- A complete and current manual consists of pages shown in the following contents section.

## Important

- Contact the installing and/or local Bard distributor for all parts requirements. Make sure you have the complete model and serial number available from the unit rating plates.

## Contents

Description	Page
Cabinet Components	
♦ Exploded View .....	2
♦ Usage List .....	2
Functional Components	WGJIFM
♦ Exploded View .....	3
♦ Usage List .....	3

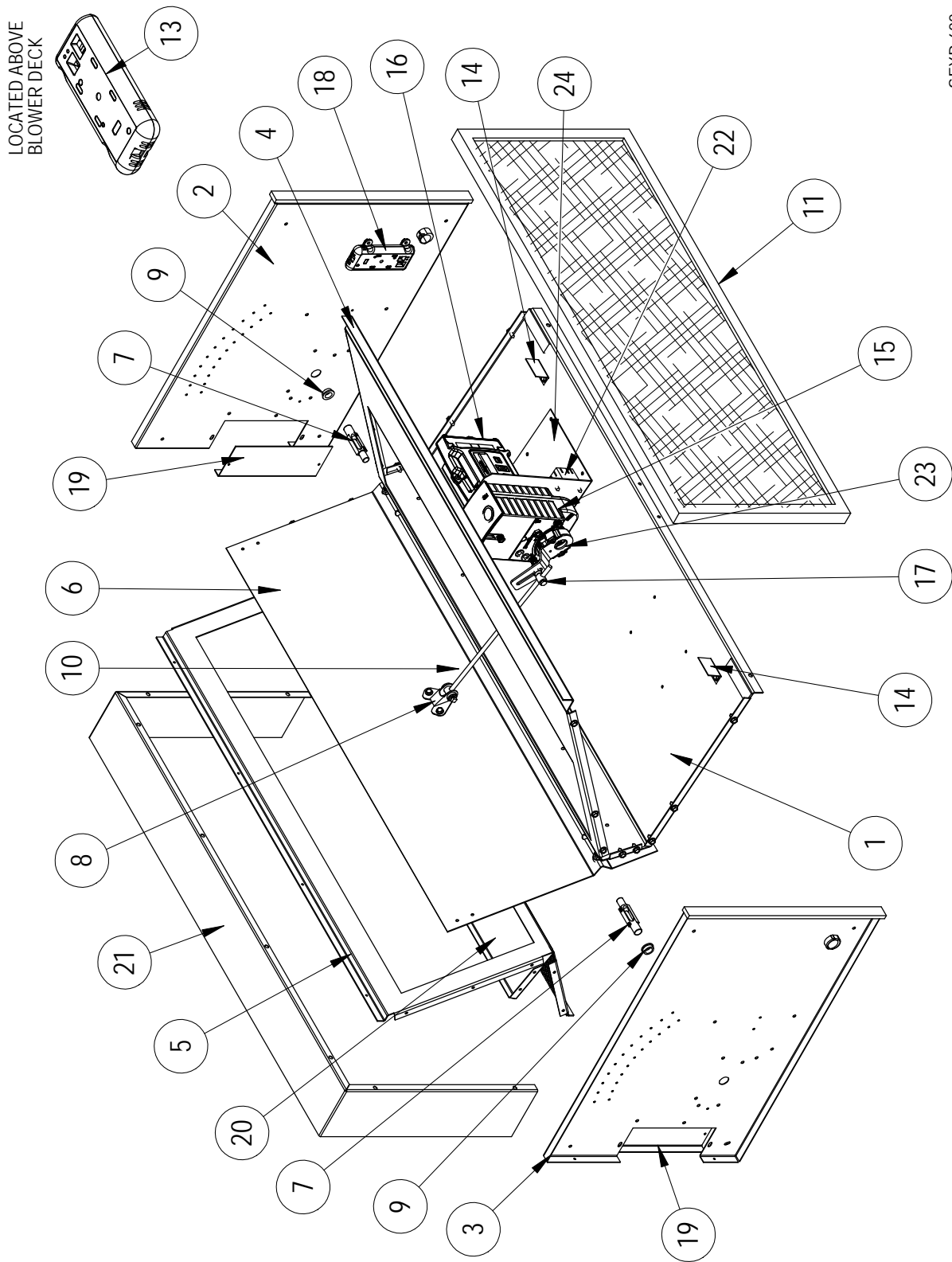


Bard Manufacturing Company, Inc.  
Bryan, Ohio 43506  
*Since 1914...Moving ahead, just as planned.*

Manual: 2110-1119  
Supersedes: **NEW**  
File: Tab 19  
Date: 10-09-13

**Climate Control Solutions**

# FUNCTIONAL and CABINET COMPONENTS



SEXP-682

# FUNCTIONAL and CABINET COMPONENTS

---

Dwg. No.	Part Number	Description	WGSJFM-5
1	127-215	Base	X
2	100X440	Right End	X
3	100Y440	Left End	X
4	137-218	Front Fill	X
5	137-484	Return Fill	X
6	139-181	Damper Blade	X
7	8602-038	Damper Blade Pin	2
8	8602-040	Bracket	X
9	8602-039	Bronze Bushing	2
10	8602-042	Rod	X
11	7003-035	Mist Eliminator	X
13	8602-063	Enthalpy Sensor	X
14	131-095	Filter Stop	2
15	8602-059	Damper Motor	X
16	8602-056-003A	Economizer Logic Control	X
17	8602-008	Ball Joint	X
18	8602-058	Thermistor	X
19	137-486	Side Fill Plate	2
20	137-483	Exhaust Partition	X
21	166-025	Extension Sleeve	X
22	8201-130	DPDT Relay	X
23	8602-068	Crank Arm	X
24	113-482	Motor Bracket	X
NS	4056-197	Wiring Diagram	X

NS = Not Shown