

---

# REPLACEMENT PARTS MANUAL

---

## COMMERCIAL ROOM VENTILATOR

Model:  
CRVS-1A

---

### General Notes

- Revised and/or additional pages may be issued from time to time.
- A complete and current manual consists of pages shown in the following contents section.

### Contents

Description	Page
Funtional and Cabinet Components	
♦ Exploded View.....	2
♦ Usage List .....	3

### Important

- Contact the installing and/or local Bard distributor for all parts requirements. Make sure you have the complete model and serial number available from the unit rating plates.

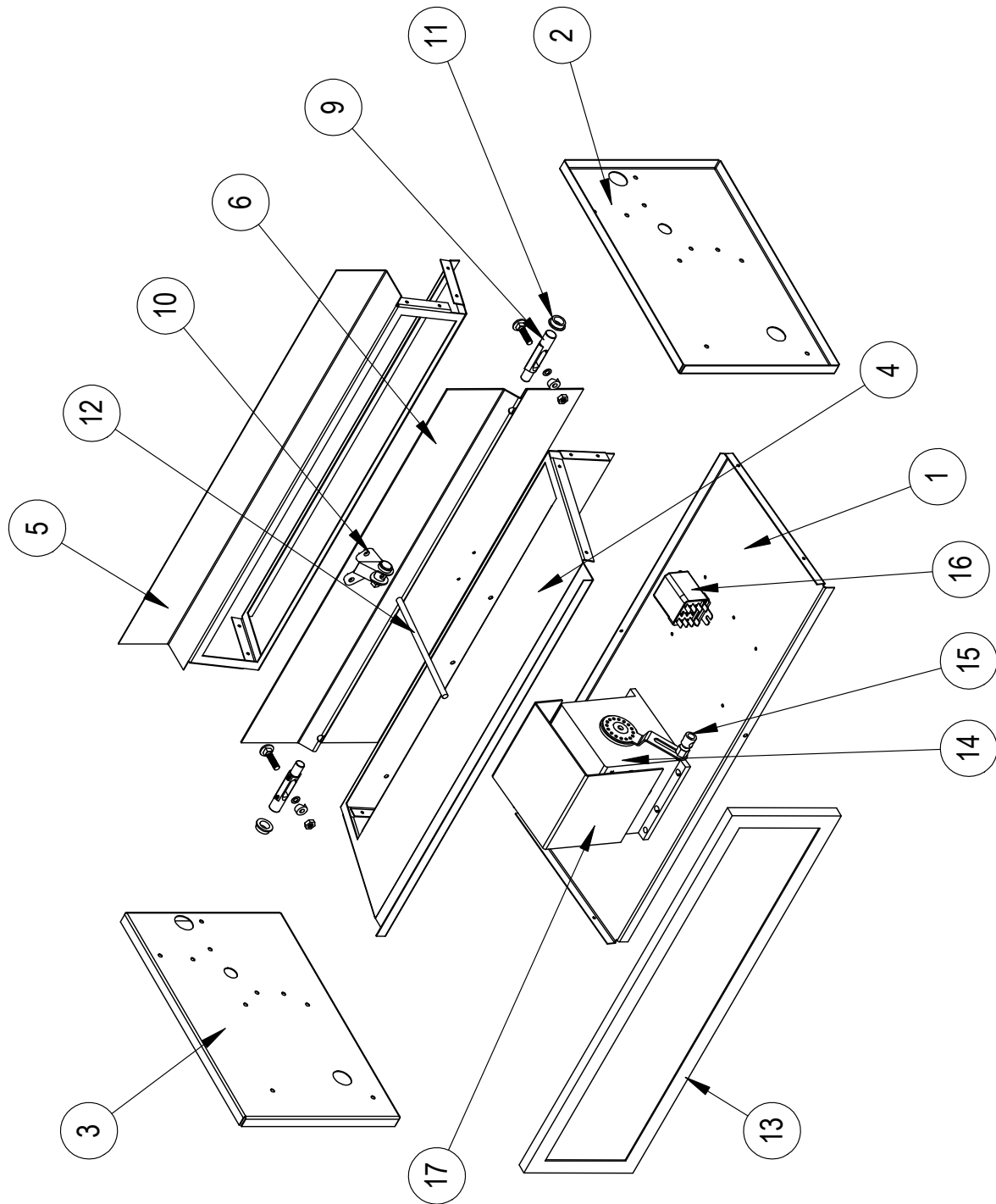


Bard Manufacturing Company, Inc.  
Bryan, Ohio 43506  
[www.bardhvac.com](http://www.bardhvac.com)

Manual : 2110-1121A  
Supersedes: 2110-1121  
File: Tab 16  
Date: 10-02-14

# FUNCTIONAL AND CABINET COMPONENTS

---



SEXP-722

# FUNCTIONAL AND CABINET COMPONENTS

---

Drawing No.	Part No.	Description	CRVS-1A
1	127-231	Base	X
2	101X871	Right End	X
3	101Y871	Left End	X
4	137-270	Front Partition	X
5	137-749	Back Partition	X
6	139-089	Damper Blade	X
9	8602-038	Damper Blade Pin	2
10	8602-040	Bracket	X
11	8602-039	Bronze Bushing	2
12	8602-042	Rod	X
13	7003-039	Mist Eliminator	X
14	8602-020	Damper Motor	X
15	8602-008	Ball Joint	X
16	8201-048	Relay	X
17	134-249	Wire Shield	X
NS	4056-224	Wiring Diagram	X
NS	536-755	Seal Plate Assembly	X
NS	536-774 ①	Seal Plate Assembly	X

NS = Not Shown

① Nonfiberglass insulation option