
REPLACEMENT PARTS MANUAL

COMMERCIAL ROOM VENTILATOR

**MODEL:
CRVS-1A**

General Notes

- Revised and/or additional pages may be issued from time to time.
- A complete and current manual consists of pages shown in the following contents section.

Important

- Contact the installing and/or local Bard distributor for all parts requirements. Make sure you have the complete model and serial number available from the unit rating plates.

Contents

Description	Page
Functional and Cabinet Components	
◆ Exploded View.....	2
◆ Exploded View.....	3
◆ Usage List	4

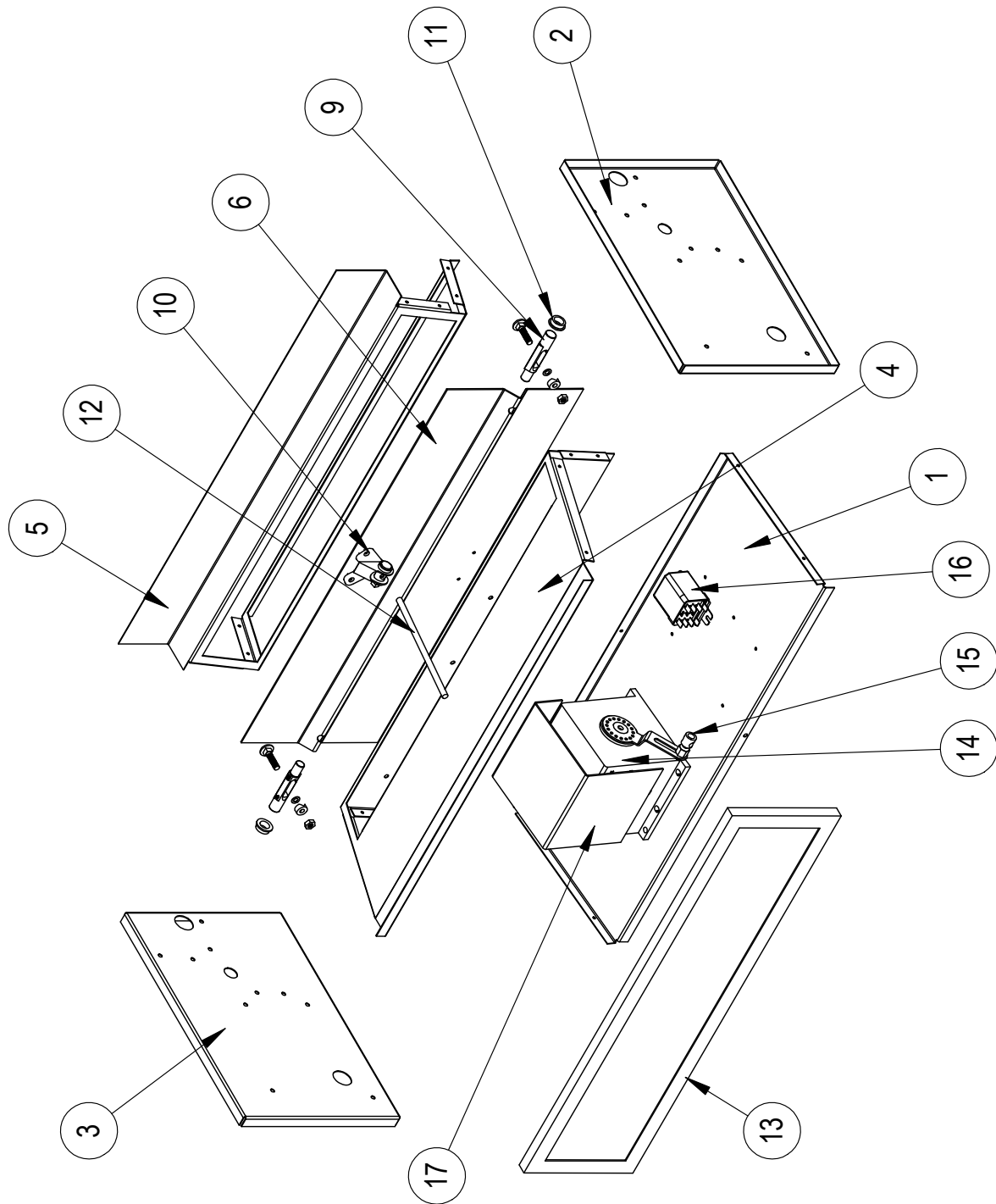


Climate Control Solutions

Bard Manufacturing Company, Inc.
Bryan, Ohio 43506
Since 1914....Moving ahead just as planned.

Manual : 2110-1121
Supersedes: **NEW**
File: Tab 16
Date: 05-27-14

FUNCTIONAL and CABINET COPONENTS



SEXP-722

FUNCTIONAL and CABINET COPONENTS

Drawing No.	Part No.	Description	CRVS-1A
1	127-231	Base	X
2	101X871	Right End	X
3	101Y871	Left End	X
4	137-270	Front Partition	X
5	137-749	Back Partition	X
6	139-089	Damper Blade	X
9	8602-038	Damper Blade Pin	2
10	8602-040	Bracket	X
11	8602-039	Bronze Bushing	2
12	8602-042	Rod	X
13	7003-039	Mist Eliminator	X
14	8602-020	Damper Motor	X
15	8602-008	Ball Joint	X
16	8201-048	Relay	X
17	134-249	Wire Shield	X
NS	4056-224	Wiring Diagram	X
NS	536-755	Seal Plate Assembly	X

NS = Not Shown