

---

# REPLACEMENT PARTS MANUAL

---

## Commercial Ventilator and Economizer

Models:

CRV-V5 ECON-NC5 ECON-WD5 ECON-DB5

---

### Contents

<b>Description</b>	<b>Page</b>
Intake Blade Assembly	
♦ Exploded View .....	2
♦ Usage List .....	3
Actuator Assembly	
♦ Exploded View .....	4
♦ Usage List .....	5
Base Assembly and Exhaust Blade Assembly	
♦ Exploded View .....	6
♦ Usage List .....	7
Exhaust Partition Assembly/Intake Seal Angle Assy.	
♦ Exploded View .....	8
♦ Usage List .....	9
Vent Assembly	
♦ Exploded View .....	10
♦ Usage List .....	11
Control Assembly	
♦ Exploded View .....	12
♦ Usage List .....	13

### General Notes

- Revised and/or additional pages may be issued from time to time.
- A complete and current manual consists of pages shown in the following contents section.

### Important

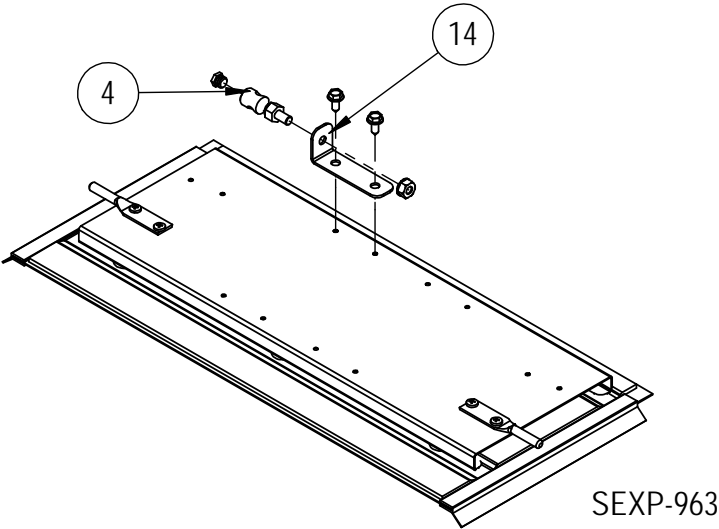
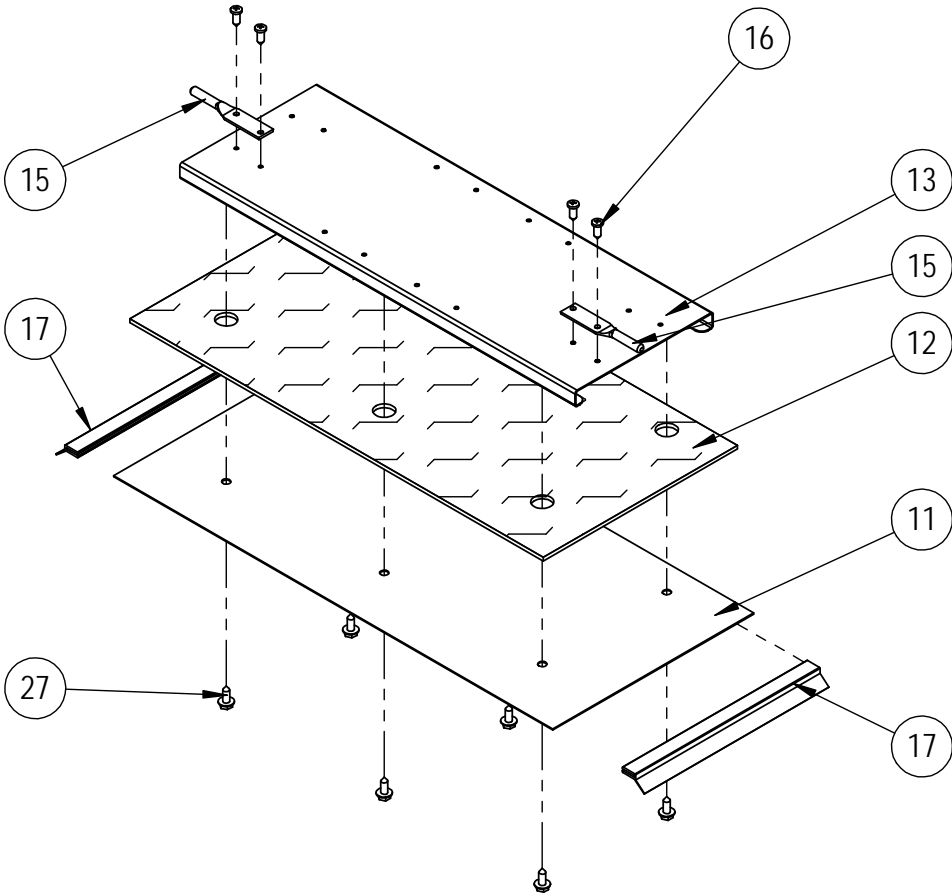
- Contact the installing and/or local Bard distributor for all parts requirements. Make sure to have the complete model and serial number available from the unit rating plates.

---

BMC, Inc.  
Bryan, Ohio 43506

Manual : 2110-1129A  
Supersedes: 2110-1129  
Date: 2-19-20

# INTAKE BLADE ASSEMBLY

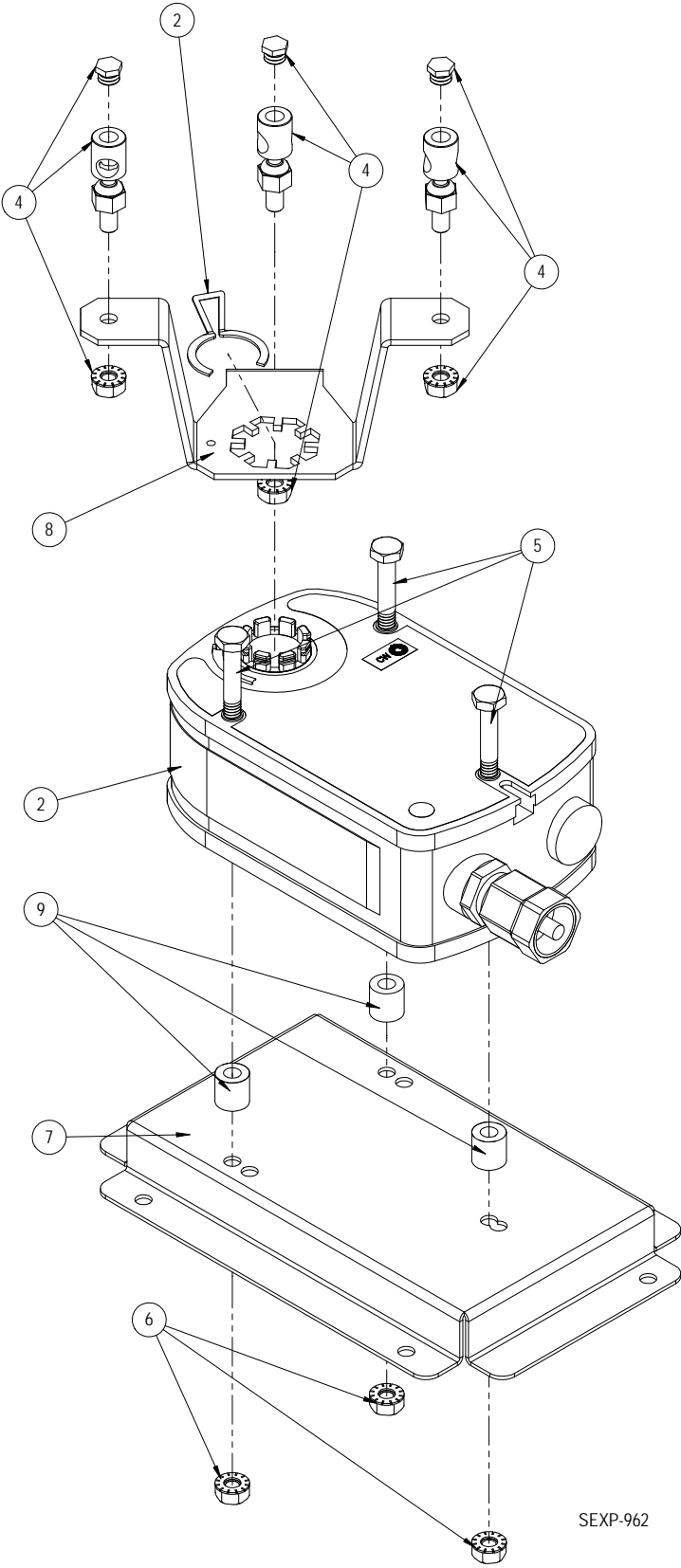


# INTAKE BLADE ASSEMBLY

---

Drawing No.	Part No.	Description	CRV-V5	ECON-NC5	ECON-WD5	ECON-DB5
4	8602-008	BALL JOINT	X	X	X	X
11	138-419	INTAKE BLADE	X	X	X	X
12	1913-125	INSULATION	X	X	X	X
13	141-496	INTAKE BLADE SUPPORT	X	X	X	X
14	113-772	BALL JOINT MOUNTING BRACKET	X	X	X	X
15	8602-106	1/4" ROUND END BEARING	2	2	2	2
17	1921-067-0700	7" DAMPER BLADE SEAL	2	2	2	2

# ACTUATOR ASSEMBLY

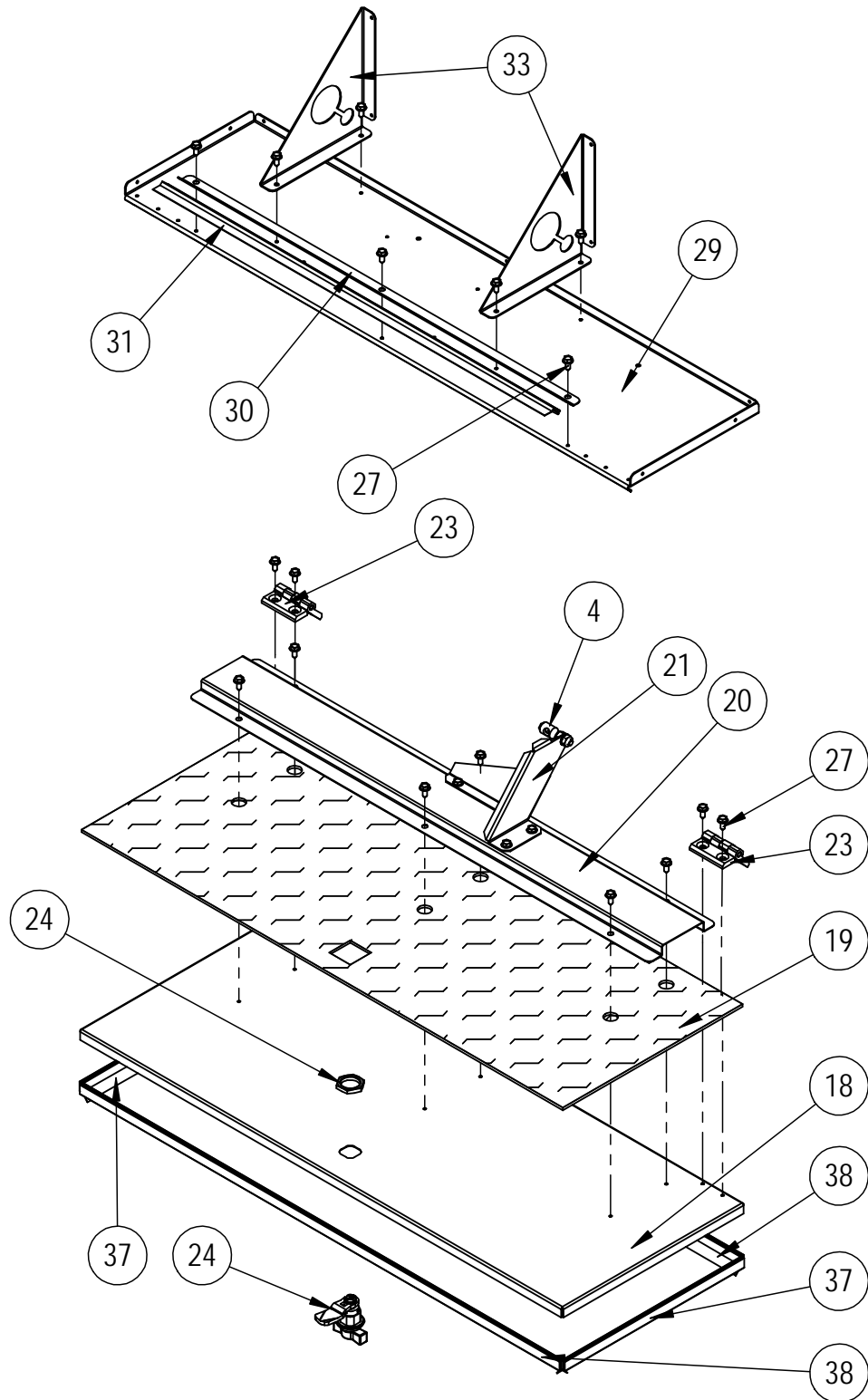


SEXP-962

# ACTUATOR ASSEMBLY

Drawing No.	Part No.	Description	CRV-V5	ECON-NC5	ECON-WD5	ECON-DB5
2	8602-059	DIRECT COUPLED ACTUATOR			X	X
2	8602-075	DIRECT COUPLED ACTUATOR	X	X		
4	8602-008	BALL JOINTS	3	3	3	3
5	1012-174	1/4"-20X3-1/4 HEX - CAP SCREW	3	X	X	X
6	1012-201	1/4-20 STEEL KEPS HEX NUT ZINC	3	3	3	3
7	141-495	ACTUATOR SUPPORT PLATE	X	X	X	X
8	139-418	ACTUATOR TRI-ARM			X	X
8	139-432	ACTUATOR TRI-ARM	X	X		
9	5451-029	NYLON SLEEVE .257" I.D. X.5" LONG	3	3		
NS	1012-355	#8-32 TRI-ARM SCREW			X	X
NS	8611-130	LTF FITTING 3/4" OD			X	X
NS	3000-1623	ACTUATOR HARNESS			X	X

# BASE ASSEMBLY AND EXHAUST BLADE ASSEMBLY



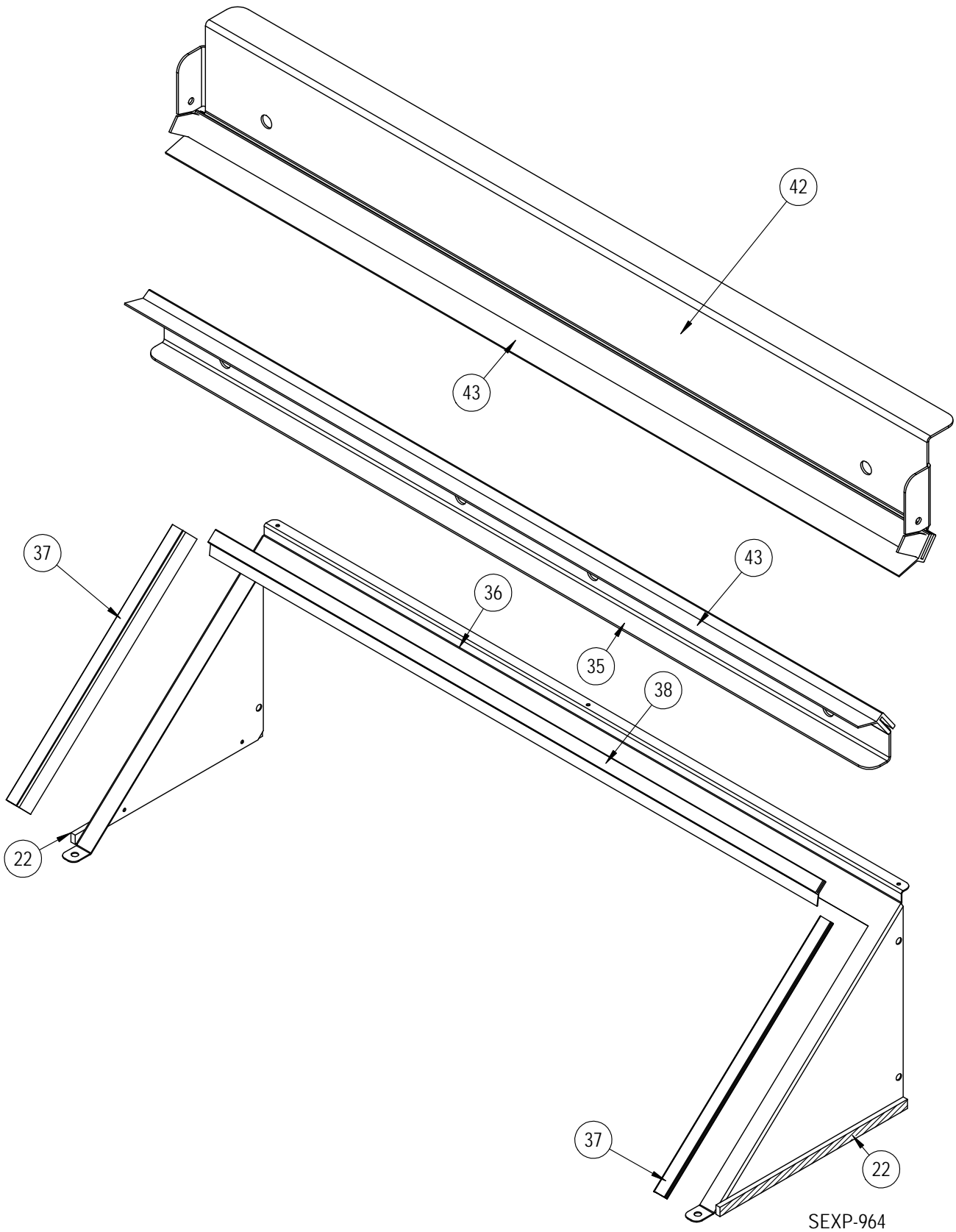
SEXP-961

## BASE ASSEMBLY AND EXHAUST BLADE ASSEMBLY

---

Drawing No.	Part No.	Description	CRV-V5	ECON-NC5	ECON-WD5	ECON-DB5
4	8602-008	BALL JOINT	X	X	X	X
18	139-420	EXHAUST BLADE	X	X	X	X
19	1913-126	INSULATION	X	X	X	X
20	141-497	EXHAUST BLADE SUPPORT	X	X	X	X
21	139-421	EXHAUST BLADE ARM	X	X	X	X
23	5400-010	METAL DBL LEAF HINGE 50 X 50MM	2	X	X	X
24	1171-072	1/4 TURN - WING KNOB LATCH	X	X	X	X
29	127-578	BASE	X	X	X	X
30	105-1461	EXHAUST SEAL ANGLE	X	X	X	X
31	1921-067-2303	23-3/16" DAMPER BLADE SEAL	X	X	X	X
33	141-499	BASE SUPPORT GUSSET	2	2	2	2
37	1921-067-1010	10-5/8" DAMPER BLADE SEAL	2	X	X	X
38	1921-067-2806	28-3/8" DAMPER BLADE SEAL	2	2	2	2

# EXHAUST PARTITION ASSEMBLY/INTAKE SEAL ANGLE ASSEMBLY



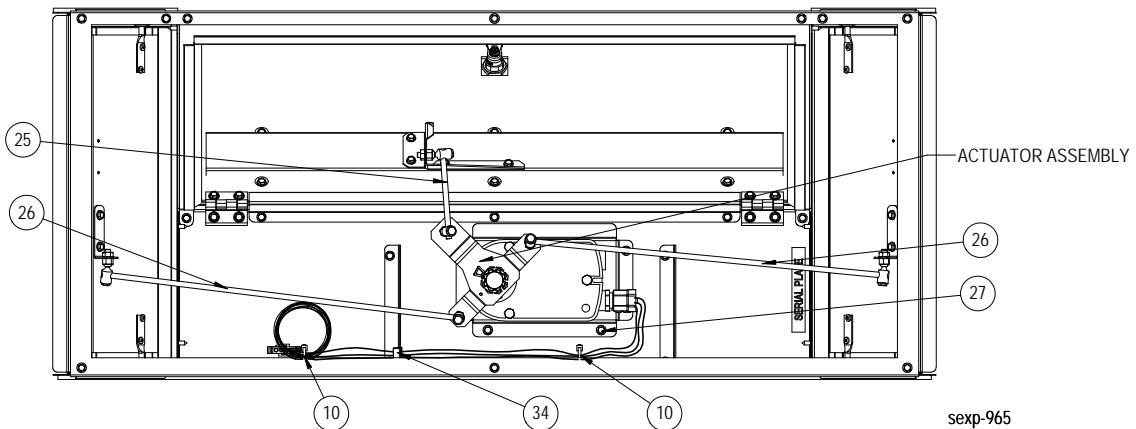
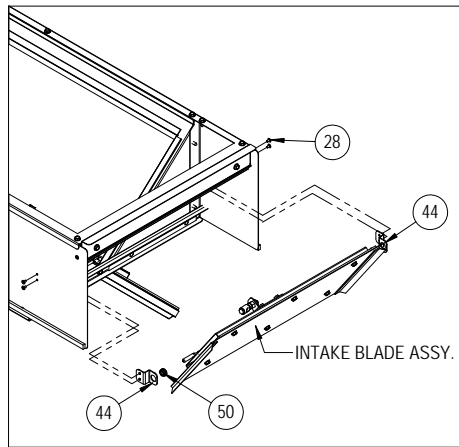
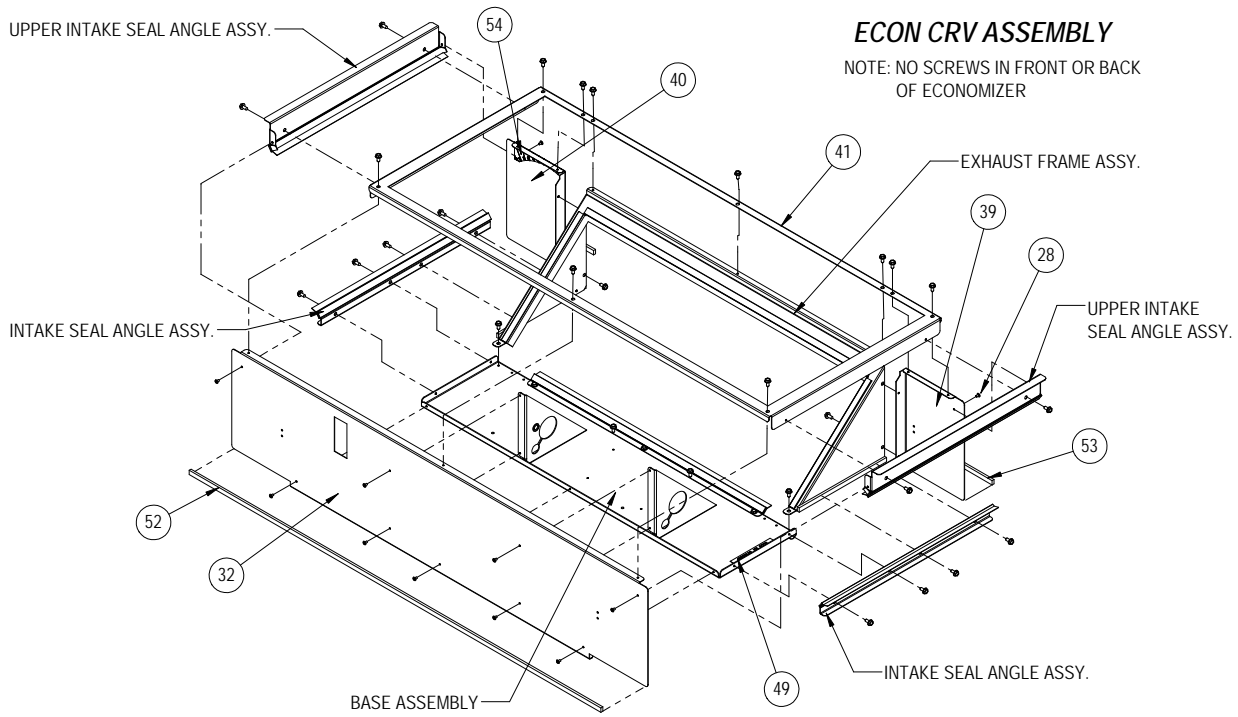


# EXHAUST PARTITION ASSEMBLY/INTAKE SEAL ANGLE ASSEMBLY

---

Drawing No.	Part No.	Description	CRV-V5	ECON-NC5	ECON-WD5	ECON-DB5
22	1913-079-0812	8-3/4" SFO W/PSA .197 X .375	2	2	2	2
35	105-1460	LOWER INTAKE SEAL ANGLE	X	X	X	X
36	139-422	EXHAUST FRAME	X	X	X	X
37	1921-067-1010	10-5/8" DAMPER BLADE SEAL	2	2	2	2
38	1921-067-2806	28-3/8" DAMPER BLADE SEAL	X	X	X	X
42	105-1459	UPPER INTAKE SEAL ANGLE	X	X	X	X
43	1921-067-1614	16-7/8" DAMPER BLADE SEAL	X	X	X	X

# VENT ASSEMBLY

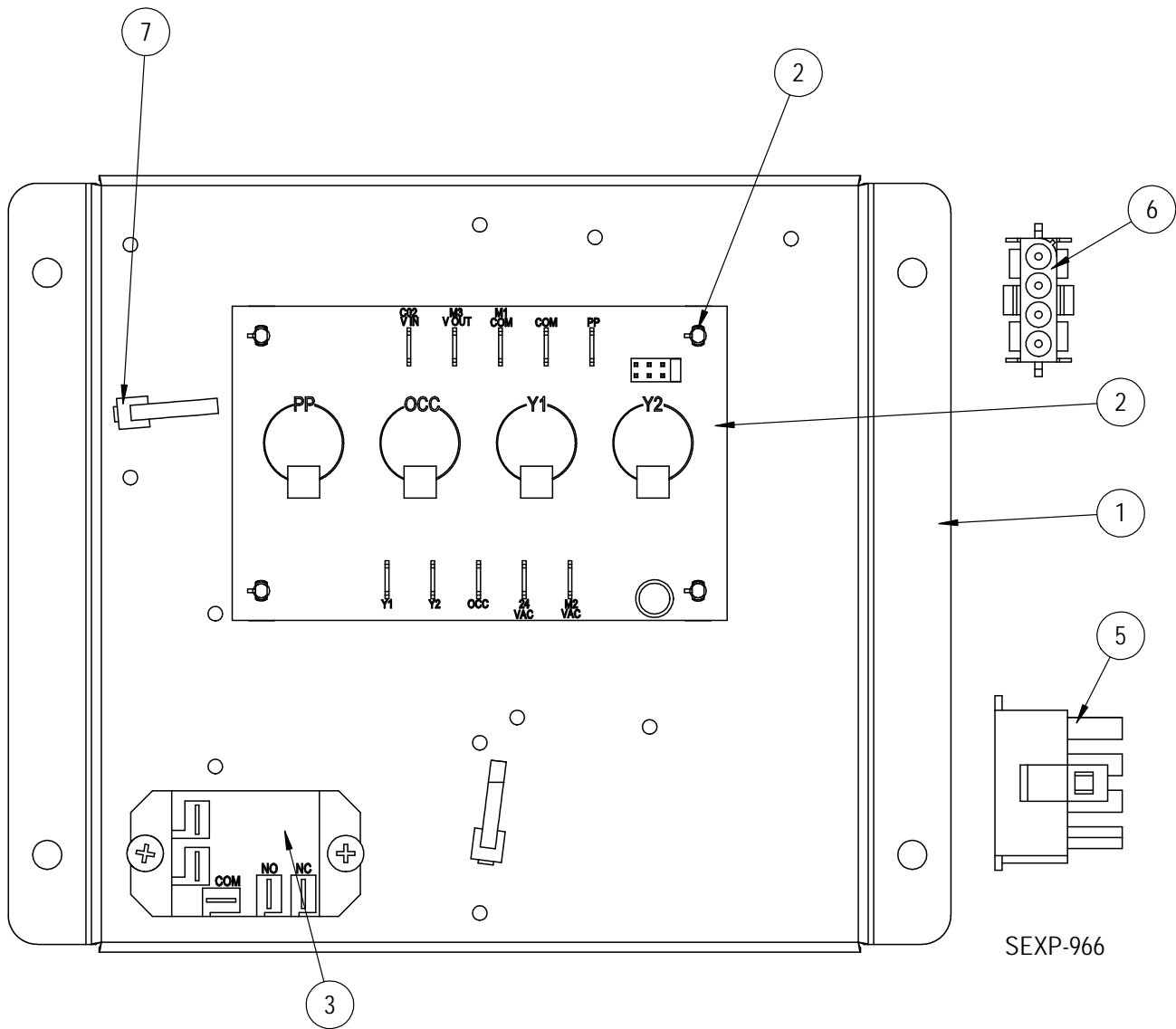


sexp-965

## VENT ASSEMBLY

Drawing No.	Part No.	Description	CRV-V5	ECON-NC5	ECON-WD5	ECON-DB5
10	7950-012	PUSH MOUNT CABLE TIE 6-1/8"	2	2	2	2
25	8602-104	1/4 X 4-1/4" ROD	X	X	X	X
26	8602-105	1/4 X 17-1/4" ROD	2	2	2	2
32	115-326	FRONT	X	X	X	X
34	8611-047	OPEN/CLOSE SNAP BUSHING 3/4"	X	X	X	X
39	139X424	REAR INTAKE PARTITION - RH	X	X	X	X
40	139Y424	REAR INTAKE PARTITION - LH	X	X	X	X
41	107-385	TOP	X	X	X	X
44	113-773	DAMPER PIVOT BRACKET	4	4	4	4
50	8611-239	1/2" SNAP-IN SMOOTH BORE BSHNG	4	4	4	4
52	1913-079-4104	41-1/4" SFO W/PSA .197 X .375	X	X	X	X
53	1913-079-0514	5-7/8" SFO W/PSA .197 X .375	2	2	2	2
54	7961-904	CRVV-5 Position Label	X			
NS	7003-084	MIST FILTER	2	2	2	2
NS	7003-083	EXHAUST BUG SCREEN	X	X	X	X
NS	543-223	SIDE VENT BLOCK OFF PLATE ASSEMBLY	2	2	2	2
NS	539-405	INTAKE SEALING FRAME	2	2	2	2
NS	4056-250	WIRING DIAGRAM			X	
NS	4056-246	WIRING DIAGRAM	X			
NS	4056-247	WIRING DIAGRAM		X		
NS	4056-254	WIRING DIAGRAM				X

# CONTROL ASSEMBLY



SEXP-966

# CONTROL ASSEMBLY

Drawing No.	Part No.	Description	CRV-V5	ECON-NC5	ECON-WD5	ECON-DB5
1	127-576	VENT CONTROL BASE	X		X	
2	8201-167	CRV CONTROL BOARD	X			
2	8602-056-0003A	HONEYWELL ECONOMIZER MODULE			X	X
3	8201-130	RELAY, SPDT, PILOT DUTY	X		X	X
4	1012-065	SCREW, TYPEAB PZPNHD #8 18X3/8				
5	3000-1625	WIRE ASSEMBLY	X			
5	3000-1635	WIRE ASSEMBLY			X	X
6	3000-1626	WIRE ASSEMBLY	X			
6	3000-1624	WIRE ASSEMBLY			X	
6	3000-1665	WIRE ASSEMBLY 4 PIN WIRE HARNESS				X
7	7950-012	PUSH MOUNT CABLE TIE 6-1/8"	2		X	X
NS	910-2072	10K SENSOR ASSEMBLY		X		
NS	910-1980	SENSOR ASSEMBLY ENTH (OUTDOOR)			X	
NS	8602-058	MIXED AIR SENSOR (INDOOR)			X	X
NS	910-2072	SENSOR ASSEMBLY 10K (OUTDOOR)		X		
NS	910-1898	TEMPERATURE SENSOR ASSEMBLY (OUTDOOR)				X