

---

# REPLACEMENT PARTS MANUAL

---

## Wall-Mounted Gas/Electric Commercial Room Ventilator with Exhaust

Models:

WGCRVS-3C WGCRVS-5C

---

### General Notes

- Revised and/or additional pages may be issued from time to time.
- A complete and current manual consists of pages shown in the following contents section.

### Important

- Contact the installing and/or local distributor for all parts requirements. Make sure to have the complete model and serial number available from the unit rating plates.

### Contents

Description	Page
Cabinet Components	
♦ Exploded View .....	2
♦ Usage List .....	2
Functional Components	
♦ Exploded View .....	3
♦ Usage List .....	3

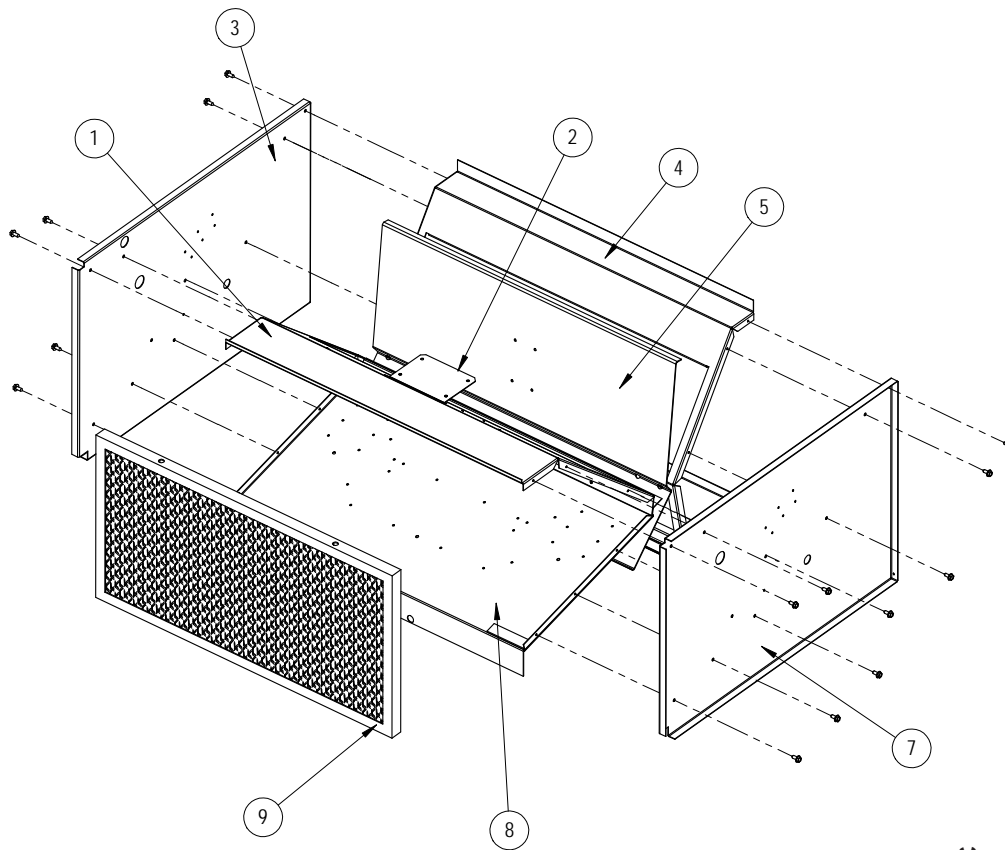


*Climate Control Solutions*

Bard Manufacturing Company, Inc.  
Bryan, Ohio 43506  
www.bardhvac.com

Manual: 2110-1141  
Supersedes: **NEW**  
Date: 12-7-21

# CABINET COMPONENTS

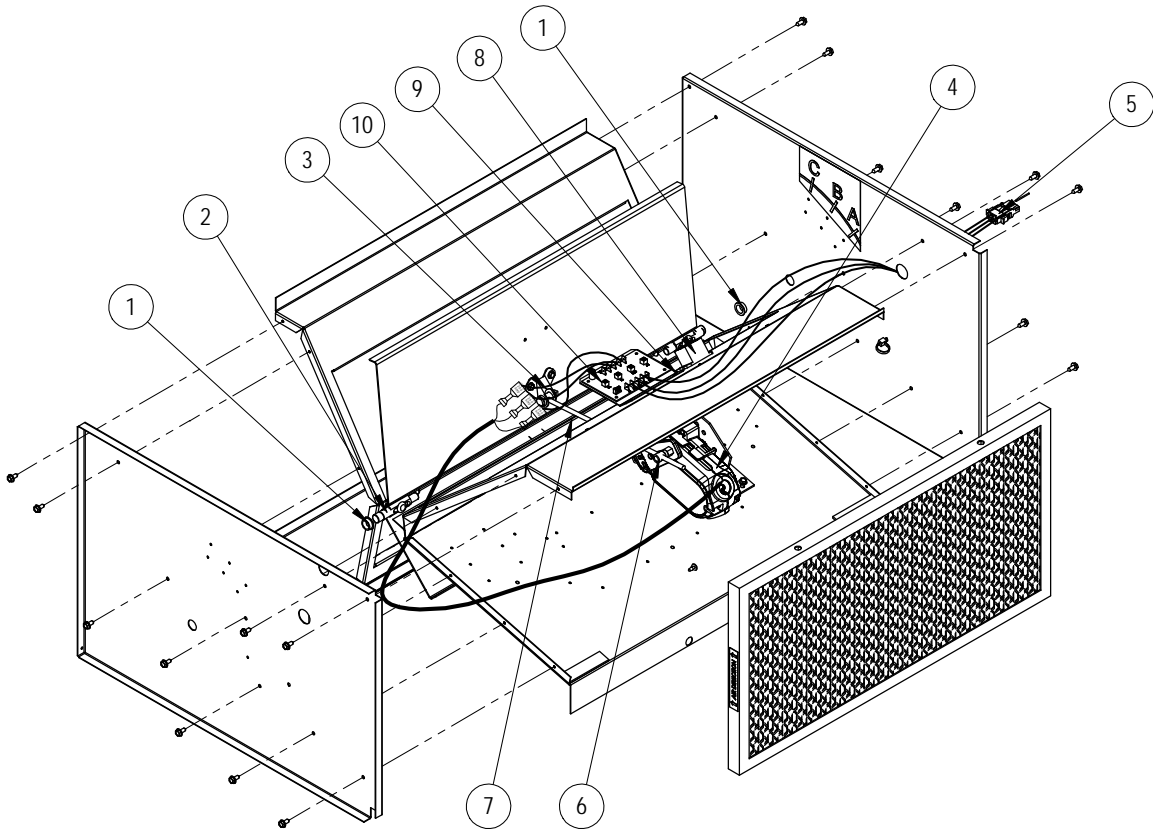


SEXP-358 A

Drawing No.	Part No.	Description	WGCRVS-3C	WGCRVS-5C
1	S137-457	Front Fill	X	
1	S137-442	Front Fill		X
2	113-907	CRV Board Bracket	X	X
3	S101Y402	Left Side	X	
3	S101Y378	Left Side		X
4	S137-458	Rear Fill	X	
4	S137-464	Rear Fill		X
5	S139-162	Damper Blade	X	
5	S139-139	Damper Blade		X
7	S101X402	Right Side	X	
7	S101X378	Right Side		X
8	S127-322	Base	X	
8	S127-303	Base		X
9	7003-058	Mist Eliminator	X	
9	7003-054	Mist Eliminator		X
NS	136-459	Bottom Fill	X	
NS	136-465	Bottom Fill		X
NS	542-134	Fill Plate Assembly with Screen	X	
NS	542-139	Fill Plate Assembly with Screen		X

NS = Not Shown

# FUNCTIONAL COMPONENTS



SEXP-360 A

Drawing No.	Part No.	Description	WGCRVS-3C	WGCRVS-5C
1	8602-052	Bushing	2	2
2	8602-038	Damper Blade Pin	2	2
3	8602-040	Bracket	X	X
4	8602-114	Damper Motor	X	X
5	3000-1712	Wire Assembly	X	X
6	8602-008	Ball Joint	X	X
7	8602-044	Rod	X	
7	8602-047	Rod		X
8	8201-130	Relay	X	X
9	113-907	CRV Control Board Bracket	X	X
10	8201-167	CRV Control Board	X	X
NS	3000-1715	Wire Harness - Damper to Unit	X	X

NS = Not Shown