
REPLACEMENT PARTS MANUAL

W72AA-C Wall-Mount Air Conditioner with 8620-284 VFD-High Resistance Ground Kit

***NOTE: For installation guidance for the 8620-284 kit, contact
Bard Technical Services at (419) 636-0439.***

Contents

| <u>Description</u> | <u>Page</u> |
|-----------------------|-------------|
| Cabinet Components | |
| ♦ Exploded View | 2 |
| ♦ Usage List | 3 |
| Functional Components | |
| ♦ Exploded View | 4 |
| ♦ Usage List | 5 |
| Control Panel | |
| ♦ Layout View | 6 |
| ♦ Usage List | 7 |
| Blower Assembly | |
| ♦ Exploded View | 8 |
| ♦ Usage List | 8 |

General Notes

- Revised and/or additional pages may be issued from time to time.
- A complete and current manual consists of pages shown in the following contents section.

Important

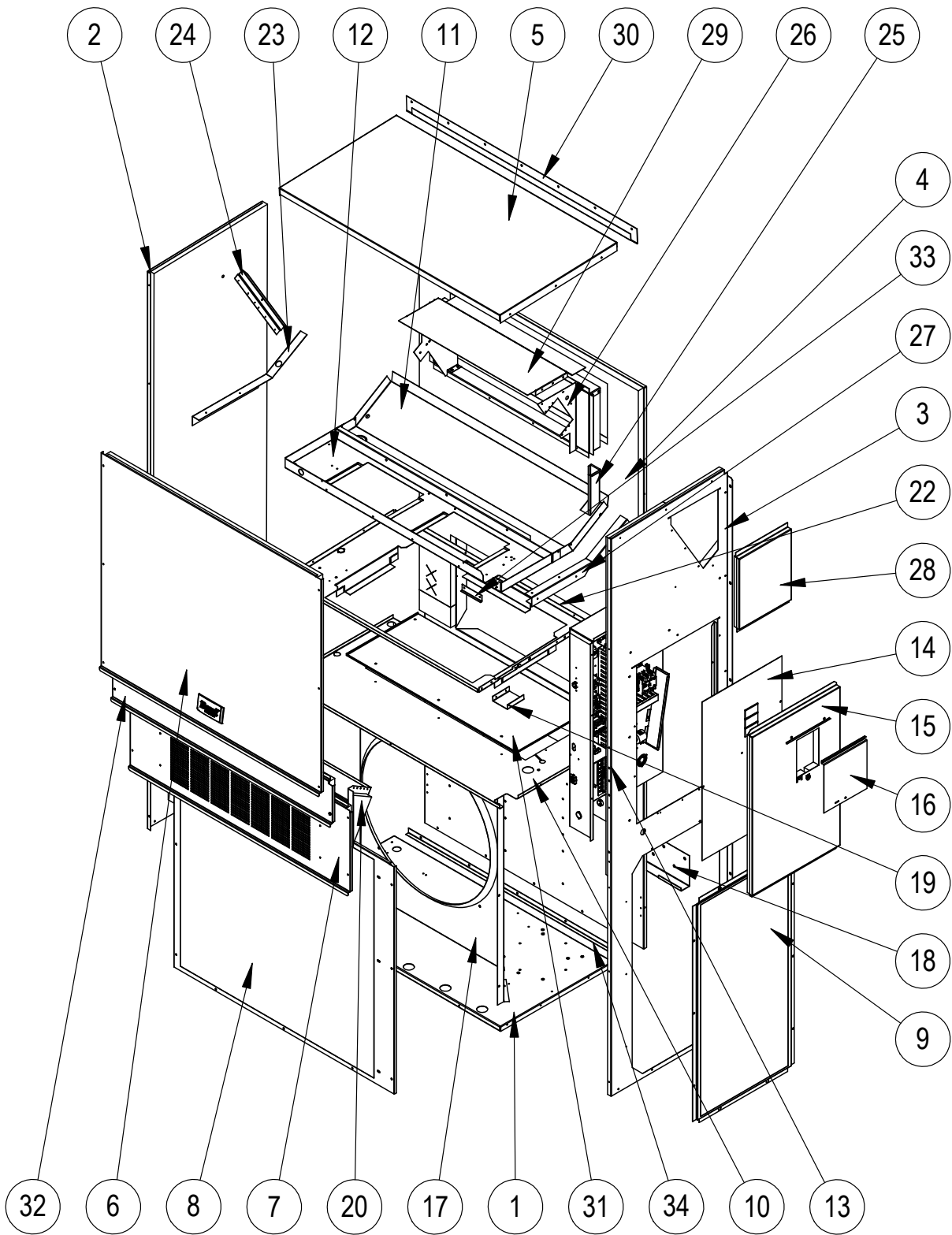
- Contact the installing and/or local Bard distributor for all parts requirements. Make sure to have the complete model and serial number available from the unit rating plates.



Bard Manufacturing Company, Inc.
Bryan, Ohio 43506
www.bardhvac.com

Manual: 2110-1446
Supersedes: **NEW**
Date: 3-2-18

CABINET COMPONENTS



SEXP-792

CABINET COMPONENTS

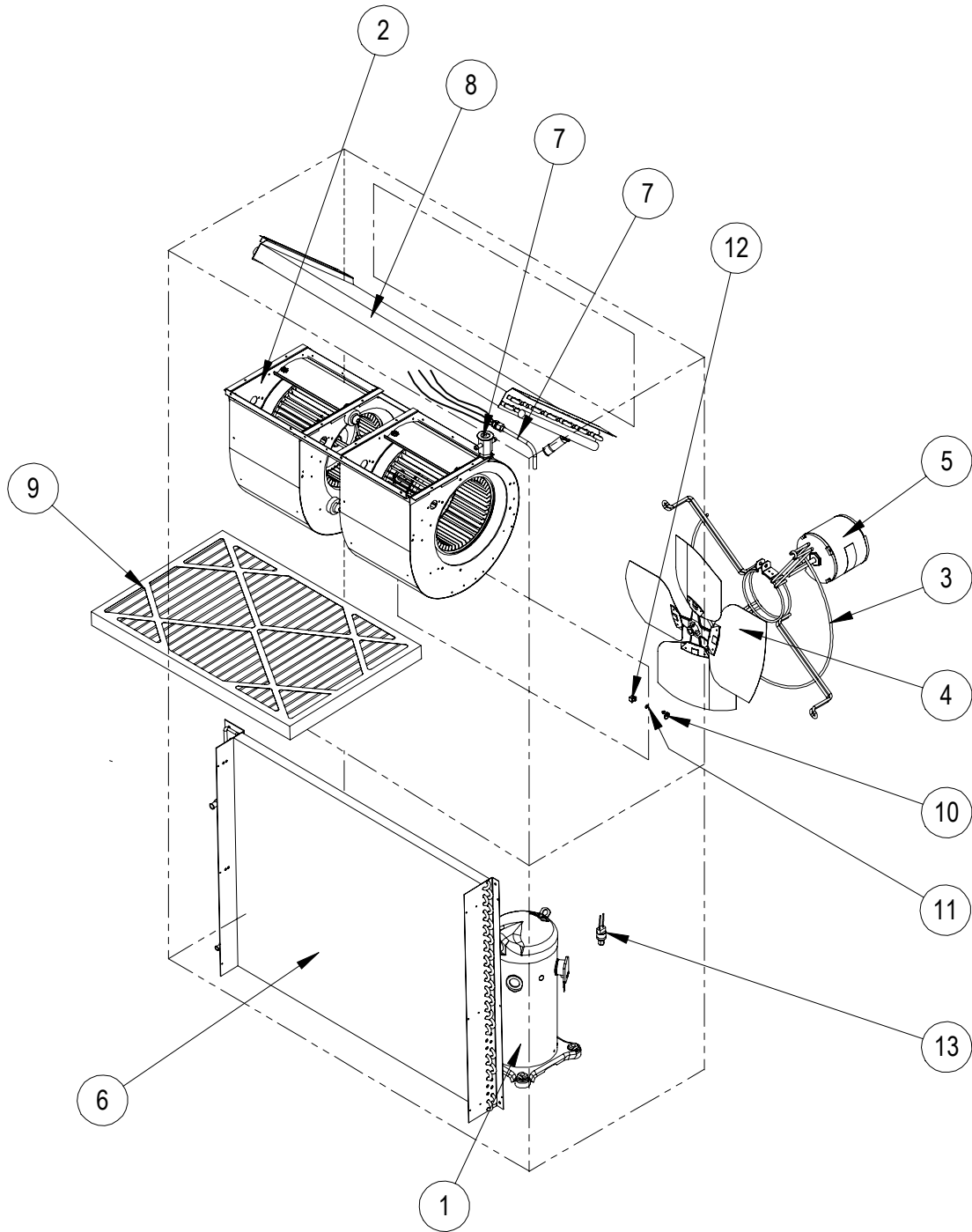
| Dwg No. | Part Number | Description | WW72AA-C |
|---------|---------------------|--|----------|
| 1 | 127-425 | Lower Base | X |
| 1 | 127-541 ③ | Lower Base | X |
| 2 | S501-733-* ① | Left Side | X |
| 2 | S501-828 ② | Left Side | X |
| 2 | S501-1010 ③ | Left Side | X |
| 3 | S501-841-* ① | Right Side | X |
| 3 | S501-928 ② | Right Side | X |
| 3 | S501-1011 ③ | Right Side | X |
| 4 | S508-251 | Back | X |
| 4 | S508-252 ② | Back | X |
| 4 | S508-396 ③ | Back | X |
| 5 | S507-307-* ① | Top | X |
| 5 | S507-309 ② | Top | X |
| 5 | S507-310 ③ | Top | X |
| 6 | S515-246-* ① | Upper Front | X |
| 6 | S514-280 ② | Upper Front | X |
| 6 | S514-253 ③ | Upper Front | X |
| 7 | S553-522-* ① | Vent Option Door | X |
| 7 | S553-529-* ① | Vent Option Door with ERV | X |
| 7 | S553-525 ② | Vent Option Door | X |
| 7 | S553-527 ③ | Vent Option Door | X |
| 8 | 118-085-* ① | Condenser Grille | X |
| 8 | 118-087 ② | Condenser Grille | X |
| 8 | 118-089 ③ | Condenser Grille | X |
| 9 | 118-086-* ① | Side Grille | 2 |
| 9 | 118-088 ② | Side Grille | 2 |
| 9 | 118-090 ③ | Side Grille | 2 |
| 10 | S521X503 | Condenser Partition | X |
| 10 | S521-559 ③ | Condenser Partition | X |
| 11 | S123-122 | Drain Pan | X |
| 11 | S123-125 ②③ | Drain Pan | X |
| 12 | 121X463 | Blower Partition | X |
| 13 | Control Panel Assy. | See Control Panel Assy. Drawing & Parts List | X |
| 14 | S132-278 | Control Panel Cover (Inner) | X |
| 15 | S533-279-* ① | Control Panel Cover (Outer) | X |
| 15 | S533-275 ② | Control Panel Cover (Outer) | X |
| 15 | S533-276 ③ | Control Panel Cover (Outer) | X |
| 16 | S153-218-* ① | Disconnect Access Door | X |
| 16 | S153-387 ② | Disconnect Access Door | X |
| 16 | S153-405 ③ | Disconnect Access Door | X |
| 17 | 125-079 ③ | Fan Shroud | X |
| 17 | 125-084 | Fan Shroud | X |
| 18 | 113-140 | Bottom Mounting Bracket | X |
| 19 | 137-209 | Fill | X |
| 20 | BFAD-5 | Fresh Air Damper Assembly | X |
| 22 | 131X099 | Filter Tray | X |
| 23 | 105X877 | Left Side Support | X |
| 24 | 147-046 | Left Evaporator Support | X |
| 25 | 135-377 | Raceway | 2 |
| 26 | S111X034 | Outlet Air Frame Assembly | X |
| 27 | 105X878 | Right Side Support | X |
| 28 | S543-172-* ① | Right Side Cover Plate (Outer) | X |
| 28 | S543-176 ② | Right Side Cover Plate (Outer) | X |
| 28 | S543-177 ③ | Right Side Cover Plate (Outer) | X |
| 29 | 135-129 | Heat Shield | X |
| 30 | 113-150-* ① | Top Rain Flashing | X |
| 30 | 113-359 ③ | Top Rain Flashing | X |
| 31 | S536-804 | Cond. Partition Block Off Plate | X |
| 31 | S536-881 ③ | Cond. Partition Block Off Plate | X |
| 32 | S553-521-* ① | Filter Door Assembly | X |
| 32 | S553-526 ② | Filter Door Assembly | X |
| 32 | S553-528 ③ | Filter Door Assembly | X |
| 33 | 105-1302 | Grommet Retainer | X |
| 34 | 105-1324 | Close Off Angle | X |

① Exterior cabinet parts are manufactured with various paint color options. To ensure the proper paint color is received, please reference the following codes: Beige -X, White -1, Buckeye Gray -4, Desert Brown -5, Dark Bronze -8

② Exterior cabinet parts are manufactured from aluminum Code "A"

③ Exterior cabinet parts are manufactured from stainless steel Code "S"

FUNCTIONAL COMPONENTS



SEXP-177 A

FUNCTIONAL COMPONENTS

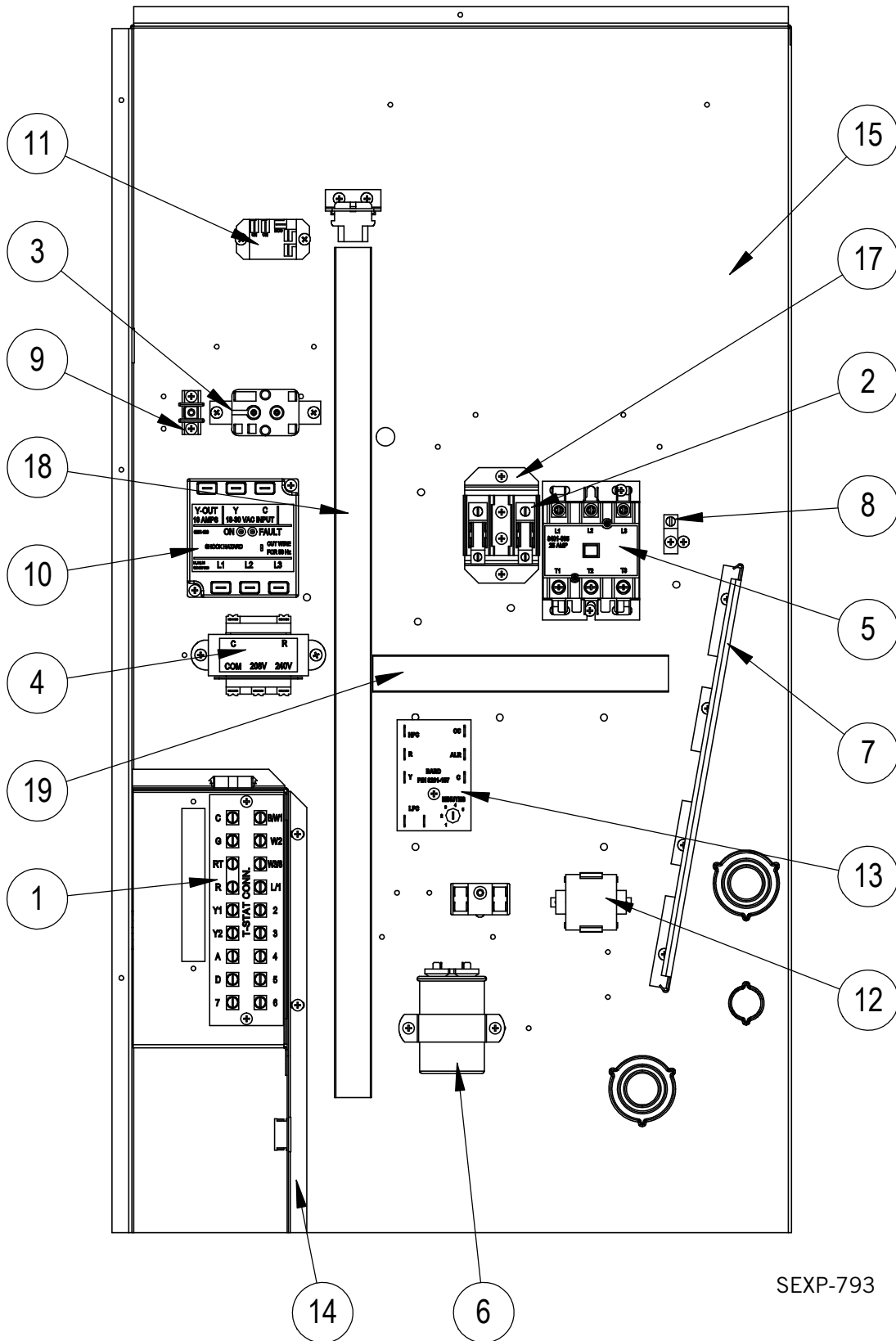
| Dwg No. | Part Number | Description | W72AA-C |
|---------|-------------|------------------------------------|---------|
| 1 | 8000-405 | Compressor | X |
| 2 | 900-186 | Blower Assembly | X |
| 3 | 8200-049 | Fan Motor Mount | X |
| 3 | 8200-052 ① | Stainless Steel Fan Motor Mount | X |
| 4 | 5151-063 | Fan Blade | X |
| 4 | 5151C063 ① | Coated Fan Blade | X |
| 5 | 8106-067 | Condenser Motor | X |
| 6 | 5051-197BX | Condenser Coil | X |
| 6 | 5054-197BX | Condenser Coil - Coated | X |
| 7 | 800-0454 | Distributor Assembly | X |
| 8 | 917-0347BX | Evaporator Coil | X |
| 8 | 917-0348BX | Evaporator Coil - Coated | X |
| 9 | 7004-016 | Air Filter 1" Throw-Away (20x30x1) | X |
| 9 | 7003-030 | Air Filter 1" Washable (20x30x1) | X |
| 9 | 7004-027 | Air Filter 2" Pleated (20x30x2) | X |
| 10 | 1171-022 | 1/4 Turn Fastener | X |
| 11 | 1171-024 | 1/4 Turn Retainer | X |
| 12 | 1171-023 | 1/4 Receptacle | X |
| NS | 5201-022 | Filter Drier | X |
| NS | CMA-28 | Low Ambient Control (Flare) ② | X |
| NS | 8406-142 | High Pressure Switch | X |
| NS | 8406-140 | Low Pressure Switch | X |
| NS | 5451-024 | Tubing Isolation Grommet | 2 |
| NS | CMC-29 | Freeze Thermostat Kit | X |
| NS | 1171-028 | Filter Door Clip | 2 |
| NS | 1171-057 | Filter Door Screw | 2 |
| NS | 1171-027 | Filter Door Screw Retainer | 2 |
| NS | 6031-009 | Coremax Valve Core | 2 |

NS – Not Shown

① – Used with stainless steel cabinet option

② – Optional on these models

CONTROL PANEL



SEXP-793

CONTROL PANEL

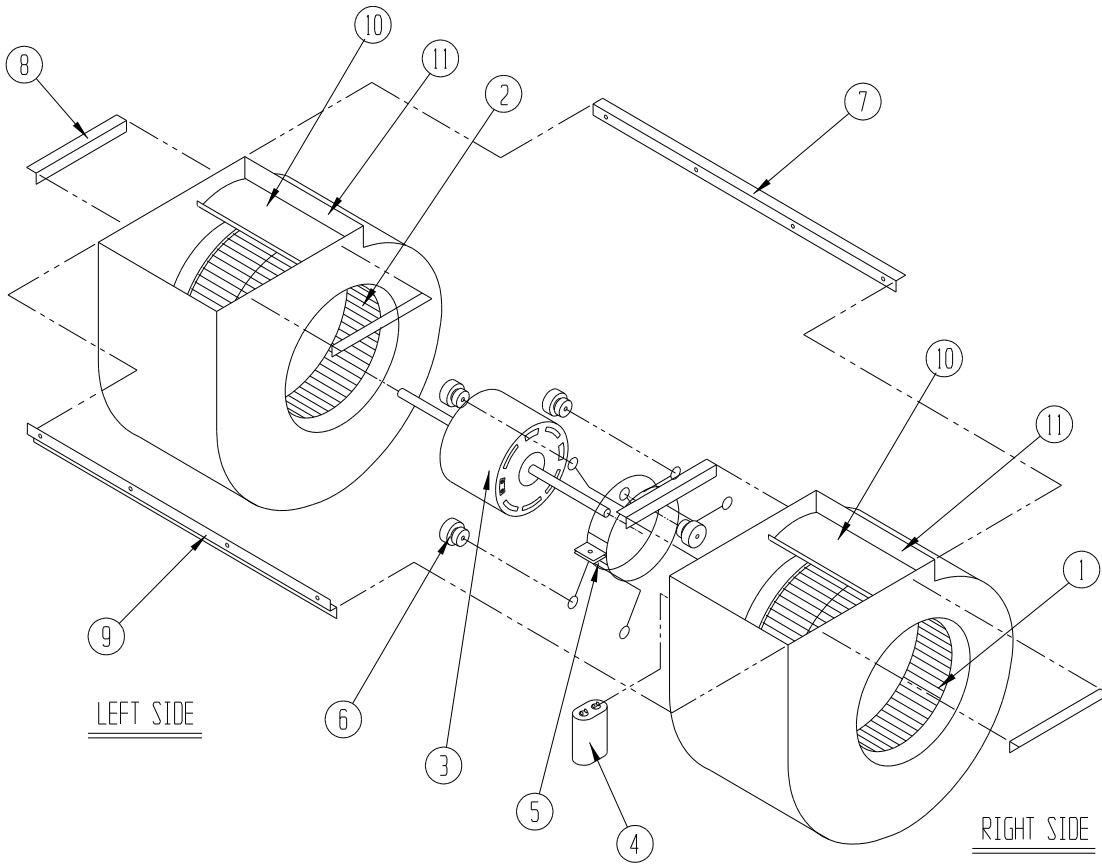
| Dwg No. | Part Number | Description | W72AA-C |
|---------|---------------|---|---------|
| 1 | 8607-044 | Low Voltage Terminal Strip | X |
| 3 | 8201-032 | Blower Control Relay | X |
| 4 | 8407-042 | Transformer | X |
| 5 | 8401-035 | Compressor Contactor | X |
| 6 | 8552-005 | Outdoor Motor Capacitor | X |
| 7 | 135-122 | Wire Shield | X |
| 8 | 8611-006 | Ground Terminal | X |
| 10 | 8201-126 | Phase Monitor | X |
| 11 | 8201-130 | Alarm Relay ① | X |
| 13 | 8201-157 | Compressor Control Module | X |
| 14 | 117X371 | Low Voltage Box | X |
| 15 | 117X373 | Control Panel | X |
| 16 | 8607-017 | Terminal Block ① | X |
| 18 | 8611-140-2300 | Cable Duct | X |
| 19 | 8611-140-0800 | Cable Duct | X |
| NS | 3000-1511 | Compressor Plug/Harness | X |
| NS | 3003-015 | Main Wire Harness | X |
| NS | 3000-1494 | Low Voltage Terminal Block Harness | X |
| NS | S910-2004 | Complete Low Voltage Box Assembly (Sheet Metal, LVTS & Wire Harness) | X |
| NS | 8607-042 | Blower Speed Terminal | X |
| NS | 3000-1512 | High Voltage Blower Motor Harness (4 wires) | X |
| NS | 3000-1513 | High Voltage Blower Motor Harness (4 wires) | X |
| NS | 8615-067 | Toggle Disconnect ② | X |
| NS | 4095-380 | Wiring Diagram | X |

① Optional on these models.

② Circuit breakers listed are for units without electric heat "OZ" models. See heater replacement parts manual for units with electric heat.

NS – Not Shown

BLOWER ASSEMBLY



SEXP-178

| Dwg No. | Part Number | Description | S900-186 |
|---------|-------------|--------------------|----------|
| 1 | 5152-011 | 10 Inch Wheel (CW) | X |
| 2 | 5152-012 | 10 Inch Wheel (CW) | X |
| 3 | 8106-025 | Blower Motor (460) | X |
| 4 | 8552-005 | Capacitor | X |
| 5 | 8200-040 | Motor Mount | X |
| 6 | 5451-011 | Grommets | 6 |
| 7 | 105-881 | Back Brace | X |
| 8 | 105-880 | Side Angle | 4 |
| 9 | 103-389 | Front Brace | X |
| 10 | 151-101 | Housing | 2 |
| 11 | 144-166 | Diffuser | 2 |