
WALL MOUNTED PACKAGE AIR CONDITIONERS

Models:

REPLACEMENT PARTS MANUAL

D36A2	D36L2
D42A2	D42L2
D48A2	D48L2
D60A2	D60L2

General Notes

- Revised and/or additional pages may be issued from time to time.
- A complete and current manual consists of pages shown in the following contents section.

Important

- Contact the installing and/or local Bard distributor for all parts requirements. Make sure you have the complete model and serial number available from the unit rating plates.

Contents

<u>Description</u>	<u>Page</u>
Cabinet Components	
♦ Exploded View - Right Hand	2
♦ Usage List - Right Hand	3
♦ Exploded View - Left Hand	4
♦ Usage List - Left Hand	5
Functional Components	
♦ Exploded View	6
♦ Usage List	7
Control Panel	
♦ Exploded View - Right Hand	8
♦ Usage List - Right Hand	9
♦ Exploded View - Left Hand	10
♦ Usage List - Left Hand	11
Blower Assembly	
♦ Exploded View	12
♦ Usage List	12
Economizer	
♦ Exploded View	13
♦ Usage List	13
Economizer Air Hood	
♦ Exploded View	14
♦ Usage List	15

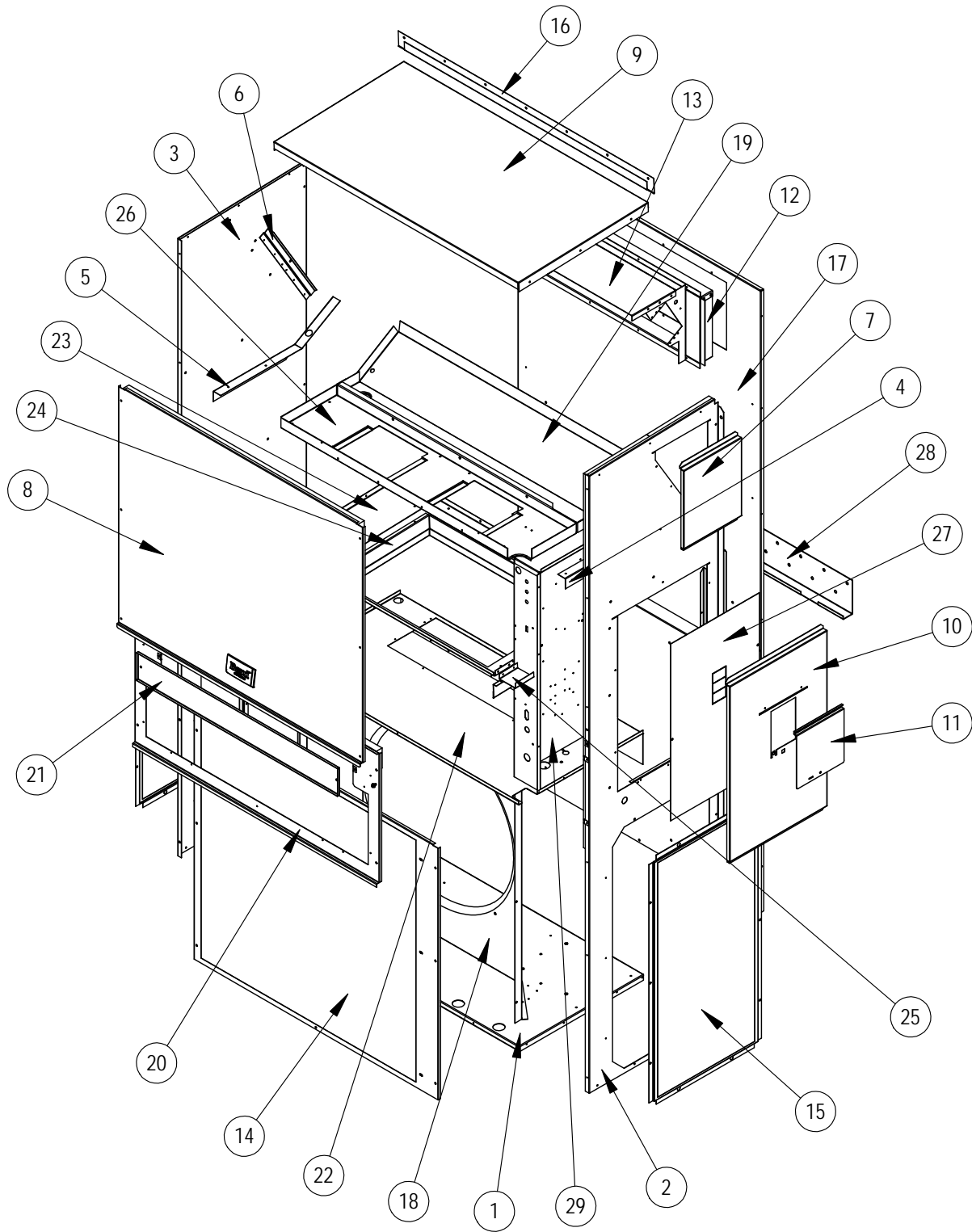


Climate Control Solutions

Bard Manufacturing Company, Inc.
Bryan, Ohio 43506
Since 1914...Moving ahead, just as planned.

Manual: 2110-1517
Supersedes: **NEW**
File: Tab 17
Date: 02-10-14

CABINET COMPONENTS — Right Hand



SEXP-713

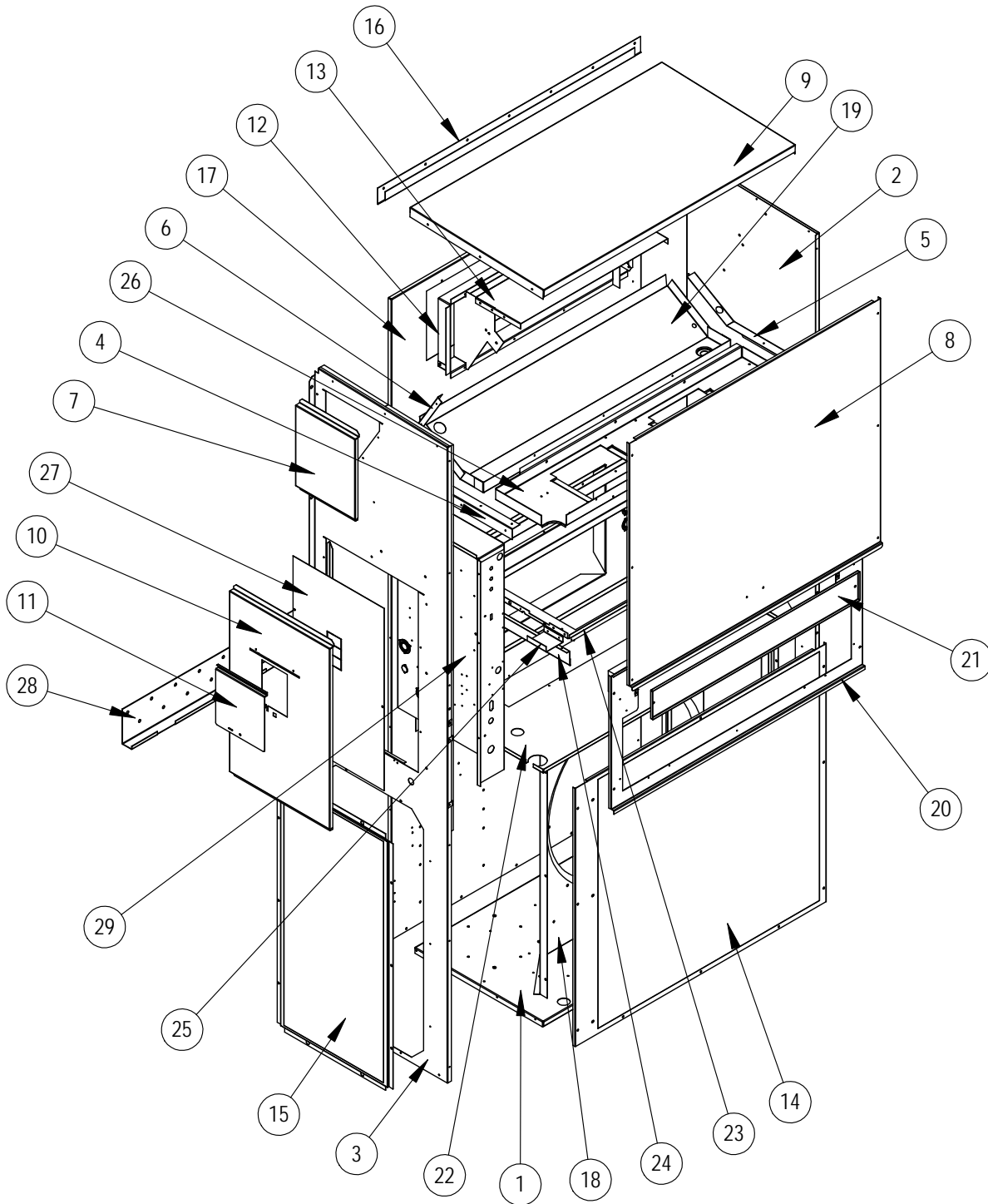
CABINET COMPONENTS — Right Hand

Dwg. No.	Part Number	Description	D36A2-A, -B, -C	D42A2-A, -B, -C	D48A2-A, -B, -C	D60A2-A, -B, -C
1	S127-481	Base	X	X	X	X
2	S501-840-* ①	Right Side	X	X		
2	S501-841-* ①	Right Side			X	X
3	S501-686-* ①	Left Side	X	X		
3	S501-733-* ①	Left Side			X	X
4	105X878	Support Angle	X	X	X	X
5	105X877	Support Angle	X	X	X	X
6	147-046	Evap. Angle	X	X	X	X
7	543-172-* ①	Heater Access Cover	X	X	X	X
8	S515-230-* ①	Upper Front	X	X		
8	S515-246-* ①	Upper Front			X	X
9	507-307-* ①	Top	X	X	X	X
10	S533-256-* ①	Control Panel Cover	X	X	X	X
11	S153-218-* ①	Disconnect Access Door	X	X	X	X
12	S111X034	Outlet Airframe Assembly	X	X	X	X
13	135-129	Heat Shield	X	X	X	X
14	118-048-* ①	Condenser Grille	X	X		
14	118-085-* ①	Condenser Grille			X	X
15	118-057-* ①	Side Grille	2	2		
15	118-086-* ①	Side Grille			2	2
16	113-150-* ①	Rain Flashing	X	X	X	X
17	508-098	Back	X	X		
17	509-251	Back			X	X
18	125-069	Fan Shroud	X	X		
18	125-070	Fan Shroud			X	X
19	523-144	Drain Pan Assembly	X	X	X	X
20	553-570-* ①	Hood Mounting Door	X	X	X	X
21	553-564	Filter Door	X	X	X	X
22	521X258	Condenser Partition	X	X	X	X
23	131X164	Filter Tray	X	X	X	X
24	131-165	Filter Tray Angle	X	X	X	X
25	137-209	Fill Plate	X	X	X	X
26	121X501	Blower Partition	X	X	X	X
27	S132-255	Inner Control Panel Cover	X	X	X	X
28	113-140	Bottom Support Bracket	X	X	X	X
29	Control Panel Assembly	See Control Panel Assembly Drawing & Parts List	X	X	X	X

① Exterior cabinet parts are manufactured with various paint color options. To ensure that you receive the proper paint color, please reference the following codes:

Beige	-X	White	-1	Buckeye Gray	-4
Desert Brown	-5	Dark Bronze	-8		

CABINET COMPONENTS — Left Hand



SEXP-714

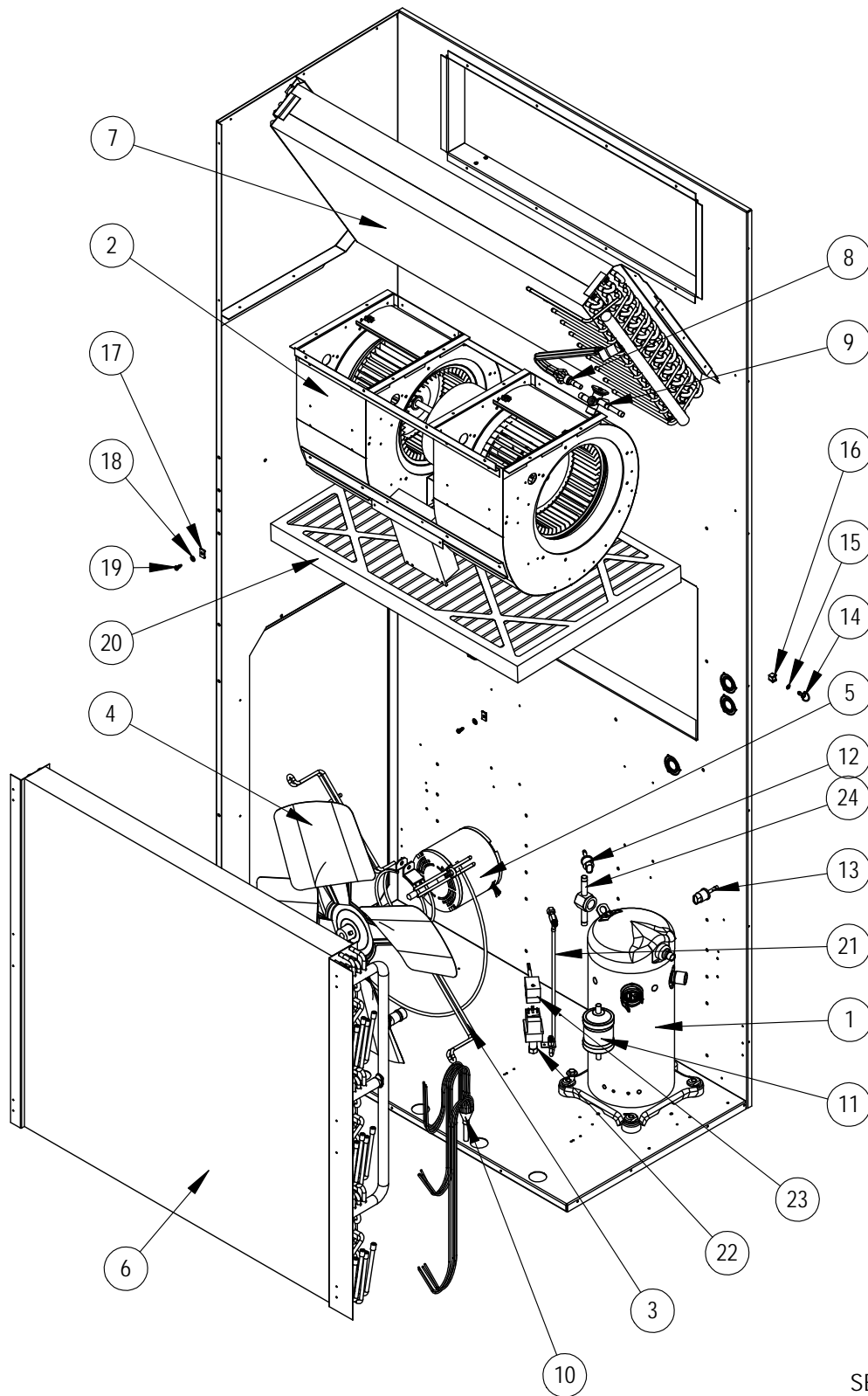
CABINET COMPONENTS — Left Hand

Dwg. No.	Part Number	Description	D36L2-A, -B, -C	D42L2-A, -B, -C	D48L2-A, -B, -C	D60L2-A, -B, -C
1	S127-482	Base	X	X	X	X
2	S501-687-* ①	Right Side	X	X		
2	S501-826-* ①	Right Side			X	X
3	S501-842-* ①	Left Side	X	X		
3	S501-843-* ①	Left Side			X	X
4	105Y878	Support Angle	X	X	X	X
5	105Y877	Support Angle	X	X	X	X
6	147-046	Evap. Angle	X	X	X	X
7	543-172-* ①	Heater Access Cover	X	X	X	X
8	S515-230-* ①	Upper Front	X	X		
8	S515-246-* ①	Upper Front			X	X
9	507-307-* ①	Top	X	X	X	X
10	S533-257-* ①	Control Panel Cover	X	X	X	X
11	S153-218-* ①	Disconnect Access Door	X	X	X	X
12	S111Y034	Outlet Airframe Assembly	X	X	X	X
13	135-129	Heat Shield	X	X	X	X
14	118-049-* ①	Condenser Grille	X	X		
14	118-094-* ①	Condenser Grille			X	X
15	118-057-* ①	Side Grille	2	2		
15	118-086-* ①	Side Grille			2	2
16	113-150-* ①	Rain Flashing	X	X	X	X
17	508-098	Back	X	X		
17	509-251	Back			X	X
18	125-069	Fan Shroud	X	X		
18	125-070	Fan Shroud			X	X
19	523-145	Drain Pan Assembly	X	X	X	X
20	553-570-* ①	Hood Mounting Door	X	X	X	X
21	553-564	Filter Door	X	X	X	X
22	521Y258	Condenser Partition	X	X	X	X
23	131Y164	Filter Tray	X	X	X	X
24	131-165	Filter Tray Angle	X	X	X	X
25	137-209	Fill Plate	X	X	X	X
26	121Y501	Blower Partition	X	X	X	X
27	S132-255	Inner Control Panel Cover	X	X	X	X
28	113-140	Bottom Support Bracket	X	X	X	X
29	Control Panel Assembly	See Control Panel Assembly Drawing & Parts List	X	X	X	X

① Exterior cabinet parts are manufactured with various paint color options. To ensure that you receive the proper paint color, please reference the following codes:

Beige	-X	White	-1	Buckeye Gray	-4
Desert Brown	-5	Dark Bronze	-8		

FUNCTIONAL COMPONENTS



SEXP-715

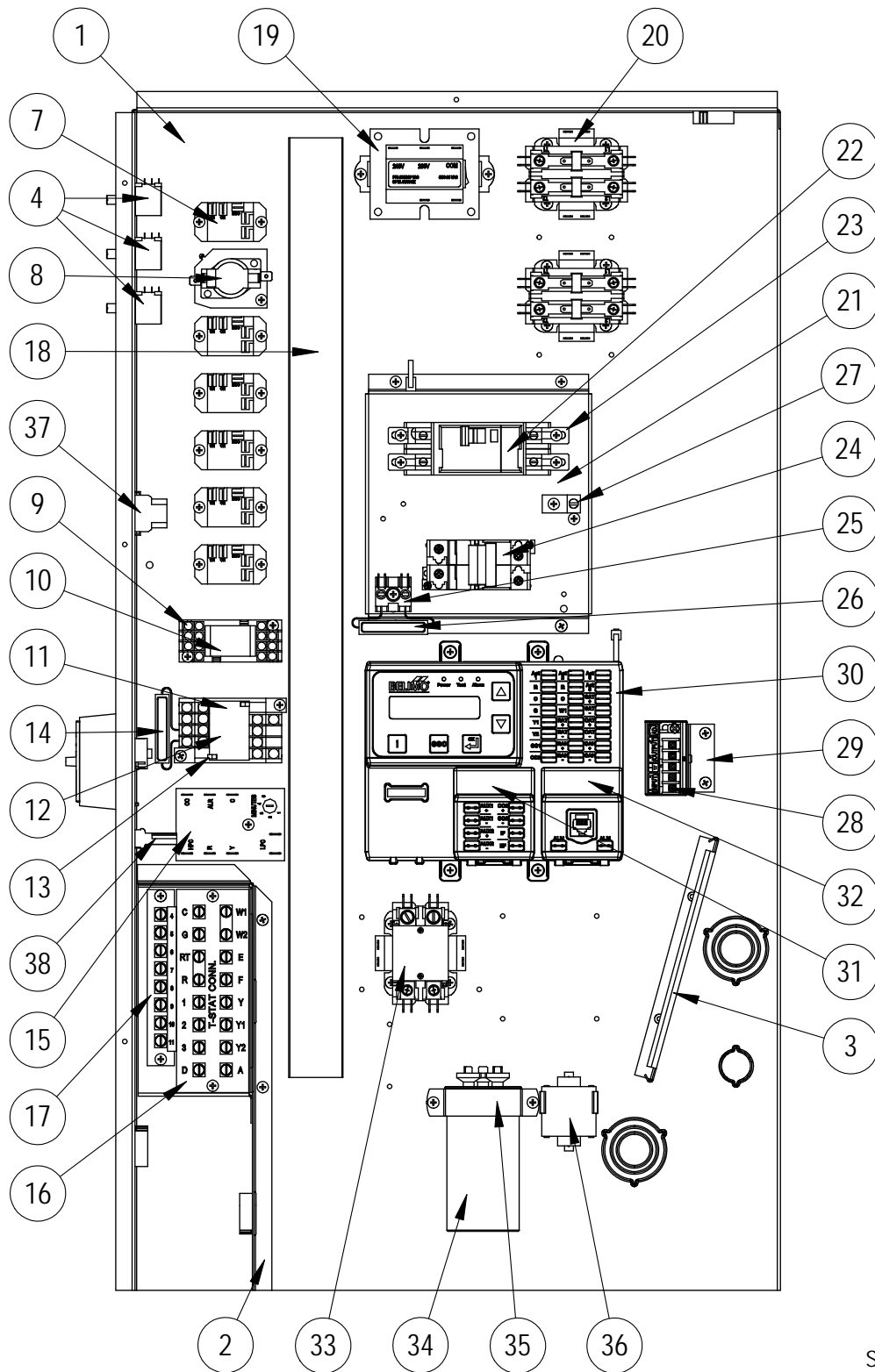
FUNCTIONAL COMPONENTS

Dwg. No.	Part Number	Description	D36A2-A	D36L2-A	D48A2-A	D48L2-A	D60A2-A	D60L2-A
1	8000-278	Compressor	X	X				
1	8000-332	Compressor			X	X		
1	8000-324	Compressor					X	X
2	S900-338	Blower Assembly	X	X	X	X	X	X
3	8200-004	Fan Motor Mount	X	X	X	X	X	X
4	5151-027	Fan Blade	X	X	X	X	X	X
5	8105-066	Condenser Motor	X	X	X	X	X	X
6	5051-107BX	Condenser Coil	X	X				
6	5051-193BX	Condenser Coil			X	X	X	X
7	5060-164BX	Evaporator Coil	X	X				
7	917-0190BX	Evaporator Coil			X	X	X	X
8	800-0409	Cooling Distributor	X	X				
8	800-0415	Cooling Distributor			X	X		
8	800-0416	Cooling Distributor					X	X
10	800-0440	Heating Distributor	X					
10	800-0441	Heating Distributor		X				
10	800-0439	Heating Distributor			X		X	
10	800-0438	Heating Distributor				X		X
11	5201-022	Filter Drier	X	X	X	X	X	X
12	1804-0462	High Pressure Switch (Flare)	X	X	X	X	X	X
13	1804-0386	Low Pressure Switch (Flare)	X	X	X	X	X	X
14	1171-022	1/4" Turn Fastener	X	X	X	X	X	X
15	1171-024	1/4" Retainer Clip	X	X	X	X	X	X
16	1171-023	1/4" Receptacle	X	X	X	X	X	X
17	1171-028	No. 9 Clip on Receptacle	2	2	2	2	2	2
18	1171-027	No. 9 Retainer Clip	2	2	2	2	2	2
19	1171-057	No. 9 Captive Screw Fastener	2	2	2	2	2	2
20	7004-027	Air Filter 2" Pleated MERV 8 ①	X	X	X	X	X	X
20	7004-049	Air Filter 2" Pleated MERV 11 ①	X	X	X	X	X	X
21	1804-0541	Low Ambient Control Extension Tube	X		X		X	
21	1804-0544	Low Ambient Control Extension Tube		X		X		X
22	8612-027	230V Head Pressure Control	X	X	X	X	X	X
23	8611-115	Plug & Wire Assembly	X	X	X	X	X	X
24	5201-014	Sight Glass	X	X	X	X	X	X
NS	3000-1222	Compressor Power Plug	X	X	X	X	X	X
NS	8605-019	Crankcase Heater ①	X	X				
NS	8605-015	Crankcase Heater ①			X	X	X	X

NS – Not Shown

① – Optional

CONTROL PANEL — Right Hand



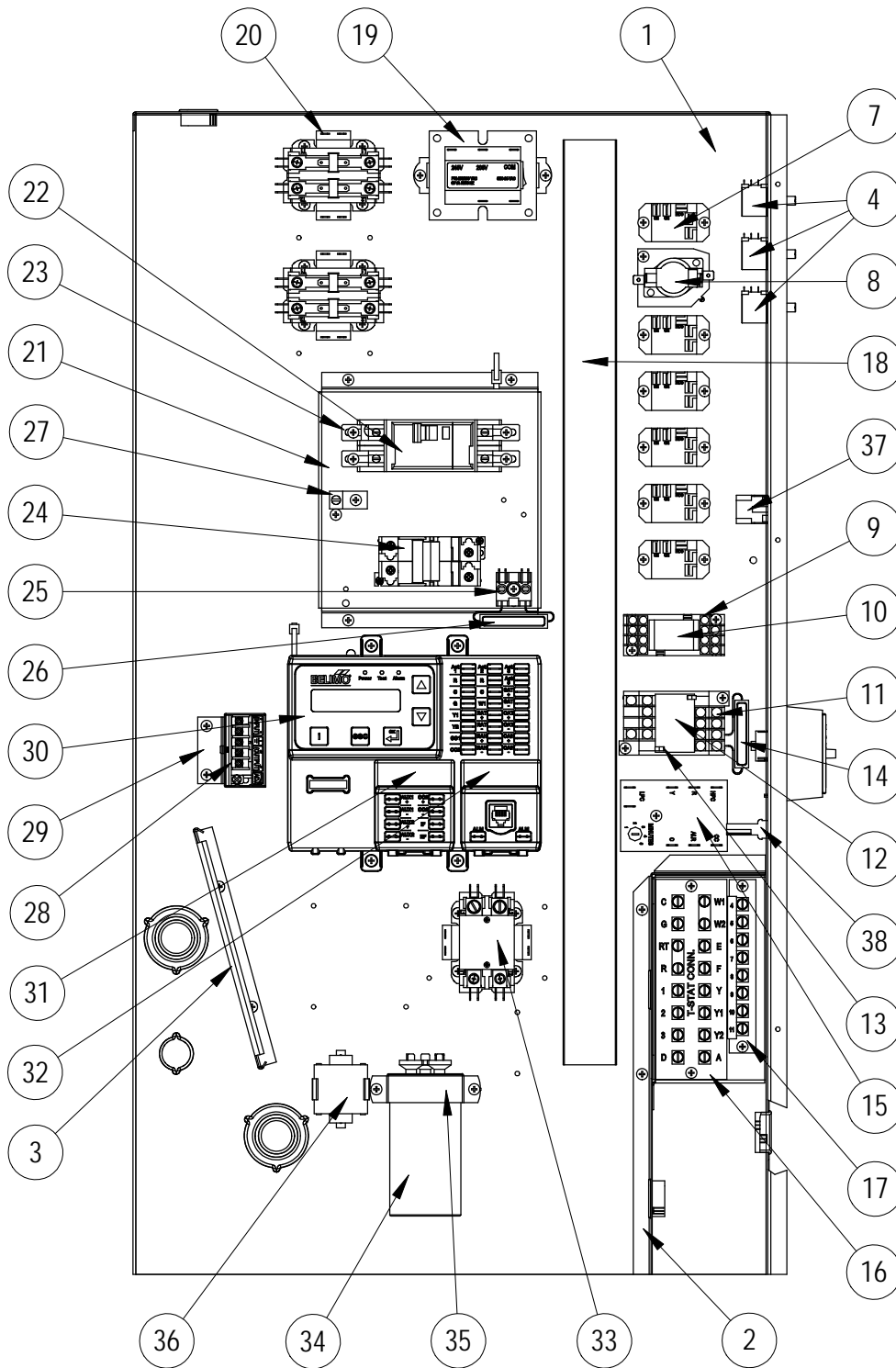
SEXP-716

CONTROL PANEL — Right Hand

Dwg. No.	Part Number	Description	D36A2-A05	D36A2-A10	D42A2-A05	D42A2-A10	D48A2-A05	D48A2-A10	D60A2-A05	D60A2-A10
1	517X345	Control Panel	X	X	X	X	X	X	X	X
2	117X333	Low Voltage Box Assembly	X	X	X	X	X	X	X	X
3	135-130	Wire Shield	X	X	X	X	X	X	X	X
4	910-1917	Econ. Mode Potentiometer Assembly	X	X	X	X	X	X	X	X
7	8201-130	SPDT Relay	6	6	6	6	6	6	6	6
8	8201-045	SPDT Time Delay Relay	X	X	X	X	X	X	X	X
9	8201-146	Relay Socket Base	X	X	X	X	X	X	X	X
10	8201-145	Relay 4PDT w/48 Vdc Coil	X	X	X	X	X	X	X	X
11	8201-143	Relay Socket Base	X	X	X	X	X	X	X	X
12	8201-142	Relay 4PDT w/240 VAC Coil	X	X	X	X	X	X	X	X
13	8201-144	Relay Hold Down Clip	4	4	4	4	4	4	4	4
14	8301-049	15K Ohm 5% 2-Watt Resistor	X	X	X	X	X	X	X	X
15	8201-088	Compressor Control Module	X	X	X	X	X	X	X	X
16	8607-034	Terminal Strip	X	X	X	X	X	X	X	X
17	8607-021	Terminal Strip 8 Terminal	X	X	X	X	X	X	X	X
18	S8611-139-2600	1½" x 1½" Cable Duct 26"	X	X	X	X	X	X	X	X
19	8407-048	Transformer 208/240-24-75VA	X	X	X	X	X	X	X	X
20	8401-006	Contacto 2-Pole 20 Amp	1	2	1	2	1	2	1	2
21	113-519	Circuit Breaker Base	X	X	X	X	X	X	X	X
22	8615-055	Circuit Breaker 40A 2-Pole	X		X					
22	8615-040	Circuit Breaker 50A 2-Pole		X		X	X			
22	8615-041	Circuit Breaker 60A 2-Pole							X	X
23	8615-057	Circuit Breaker Mounting Foot	X	X	X	X	X	X	X	X
24	8615-079	Circuit Breaker 20A 125 Vdc	X	X	X	X	X	X	X	X
25	8607-030	Screw to Tab Terminal Block	X	X	X	X	X	X	X	X
26	8301-047	820 Ohm 5% 10-Watt Resistor	X	X	X	X	X	X	X	X
27	8611-006	Ground Terminal	X	X	X	X	X	X	X	X
28	8301-046	36-72 Vdc to 24 Vdc Converter	X	X	X	X	X	X	X	X
29	113-520	DC Converter Bracket	X	X	X	X	X	X	X	X
30	8602-071	Economizer Logic Control	X	X	X	X	X	X	X	X
31	8602-072	Energy Module	X	X	X	X	X	X	X	X
32	8602-073	Communications Module	X	X	X	X	X	X	X	X
33	8401-034	Contacto 2-Pole 40 Amp	X	X	X	X	X	X	X	X
34	8552-079	Capacitor 45/10 MFD 370V	X	X	X	X				
34	8552-089	Capacitor 70/10 MFD 370V					X	X		
34	8552-058	Capacitor 80/10 MFD 440V							X	X
35	8550-008	Capacitor Bracket 2½" Round	X	X	X	X	X	X	X	X
36	8551-004	Motor Starting Device	X	X	X	X	X	X	X	X
37	3000-1453	Wire Assembly	X	X	X	X	X	X	X	X
38	3000-1454	Wire Assembly	X	X	X	X	X	X	X	X
NS	910-1922	Filter Switch Assembly	X	X	X	X	X	X	X	X
NS	8408-038	Freeze Protect Thermostat	X	X	X	X	X	X	X	X
NS	4206-103	Wiring Diagram	X		X		X		X	
NS	4206-104	Wiring Diagram		X		X		X		X

NS – Not Shown

CONTROL PANEL — Left Hand



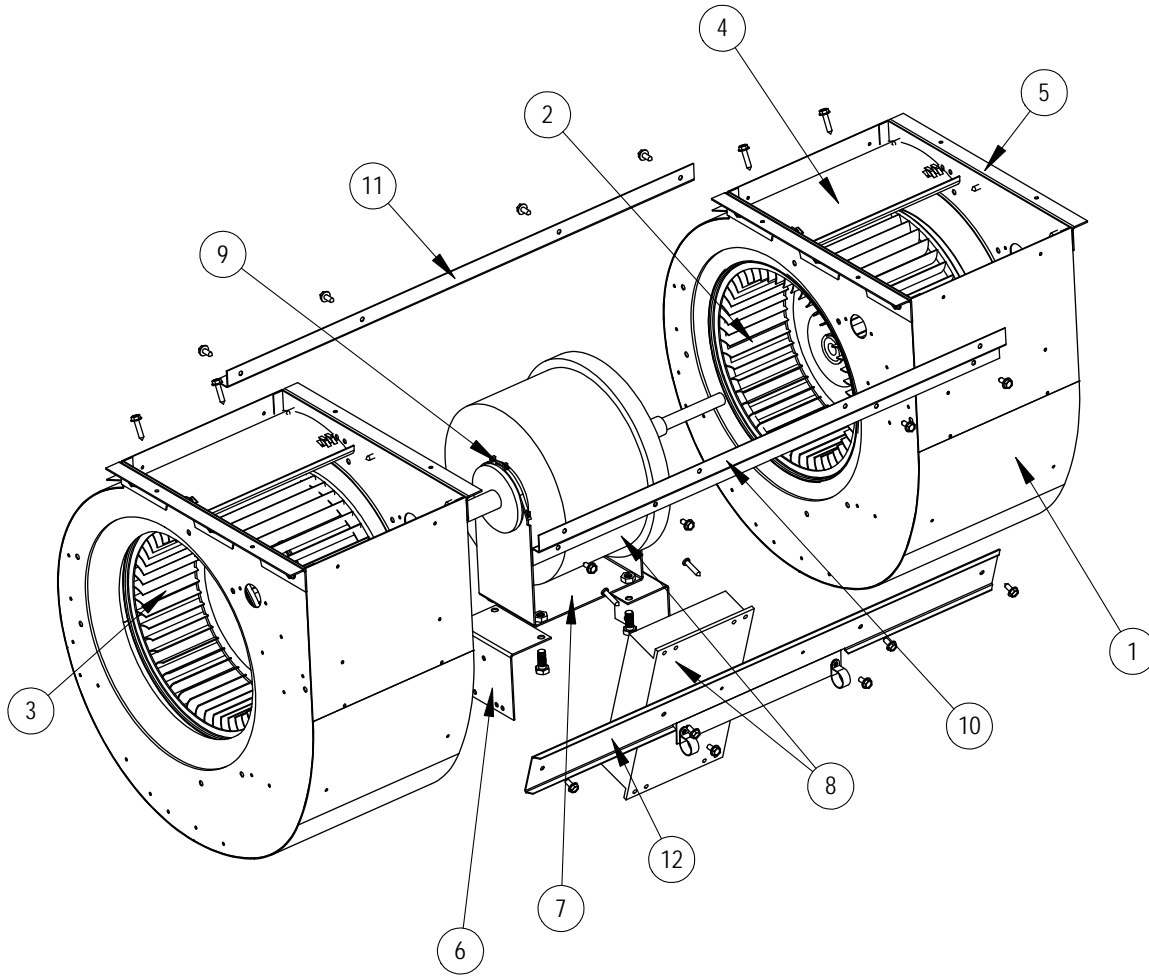
SEXP-717

CONTROL PANEL — Left Hand

Dwg. No.	Part Number	Description	D36L2-A05	D36L2-A10	D42L2-A05	D42L2-A10	D48L2-A05	D48L2-A10	D60L2-A05	D60L2-A10
1	517Y345	Control Panel	X	X	X	X	X	X	X	X
2	117Y333	Low Voltage Box Assembly	X	X	X	X	X	X	X	X
3	135-130	Wire Shield	X	X	X	X	X	X	X	X
4	910-1917	Econ. Mode Potentiometer Assembly	X	X	X	X	X	X	X	X
7	8201-130	SPDT Relay	6	6	6	6	6	6	6	6
8	8201-045	SPDT Time Delay Relay	X	X	X	X	X	X	X	X
9	8201-146	Relay Socket Base	X	X	X	X	X	X	X	X
10	8201-145	Relay 4PDT w/48 Vdc Coil	X	X	X	X	X	X	X	X
11	8201-143	Relay Socket Base	X	X	X	X	X	X	X	X
12	8201-142	Relay 4PDT w/240 VAC Coil	X	X	X	X	X	X	X	X
13	8201-144	Relay Hold Down Clip	4	4	4	4	4	4	4	4
14	8301-049	15K Ohm 5% 2-Watt Resistor	X	X	X	X	X	X	X	X
15	8201-088	Compressor Control Module	X	X	X	X	X	X	X	X
16	8607-034	Terminal Strip	X	X	X	X	X	X	X	X
17	8607-021	Terminal Strip 8 Terminal	X	X	X	X	X	X	X	X
18	S8611-139-2600	1½" x 1½" Cable Duct 26"	X	X	X	X	X	X	X	X
19	8407-048	Transformer 208/240-24-75VA	X	X	X	X	X	X	X	X
20	8401-006	Contactoer 2-Pole 20 Amp	1	2	1	2	1	2	1	2
21	113-519	Circuit Breaker Base	X	X	X	X	X	X	X	X
22	8615-055	Circuit Breaker 40A 2-Pole	X		X					
22	8615-040	Circuit Breaker 50A 2-Pole		X		X	X			
22	8615-041	Circuit Breaker 60A 2-Pole							X	X
23	8615-057	Circuit Breaker Mounting Foot	X	X	X	X	X	X	X	X
24	8615-079	Circuit Breaker 20A 125 Vdc	X	X	X	X	X	X	X	X
25	8607-030	Screw to Tab Terminal Block	X	X	X	X	X	X	X	X
26	8301-047	820 Ohm 5% 10-Watt Resistor	X	X	X	X	X	X	X	X
27	8611-006	Ground Terminal	X	X	X	X	X	X	X	X
28	8301-046	36-72 Vdc to 24 Vdc Converter	X	X	X	X	X	X	X	X
29	113-520	DC Converter Bracket	X	X	X	X	X	X	X	X
30	8602-071	Economizer Logic Control	X	X	X	X	X	X	X	X
31	8602-072	Energy Module	X	X	X	X	X	X	X	X
32	8602-073	Communications Module	X	X	X	X	X	X	X	X
33	8401-034	Contactoer 2-Pole 40 Amp	X	X	X	X	X	X	X	X
34	8552-079	Capacitor 45/10 MFD 370V	X	X	X	X				
34	8552-089	Capacitor 70/10 MFD 370V					X	X		
34	8552-058	Capacitor 80/10 MFD 440V							X	X
35	8550-008	Capacitor Bracket 2½" Round	X	X	X	X	X	X	X	X
36	8551-004	Motor Starting Device	X	X	X	X	X	X	X	X
37	3000-1453	Wire Assembly	X	X	X	X	X	X	X	X
38	3000-1454	Wire Assembly	X	X	X	X	X	X	X	X
NS	910-1922	Filter Switch Assembly	X	X	X	X	X	X	X	X
NS	8408-038	Freeze Protect Thermostat	X	X	X	X	X	X	X	X
NS	4206-103	Wiring Diagram	X		X		X		X	
NS	4206-104	Wiring Diagram		X		X		X		X

NS – Not Shown

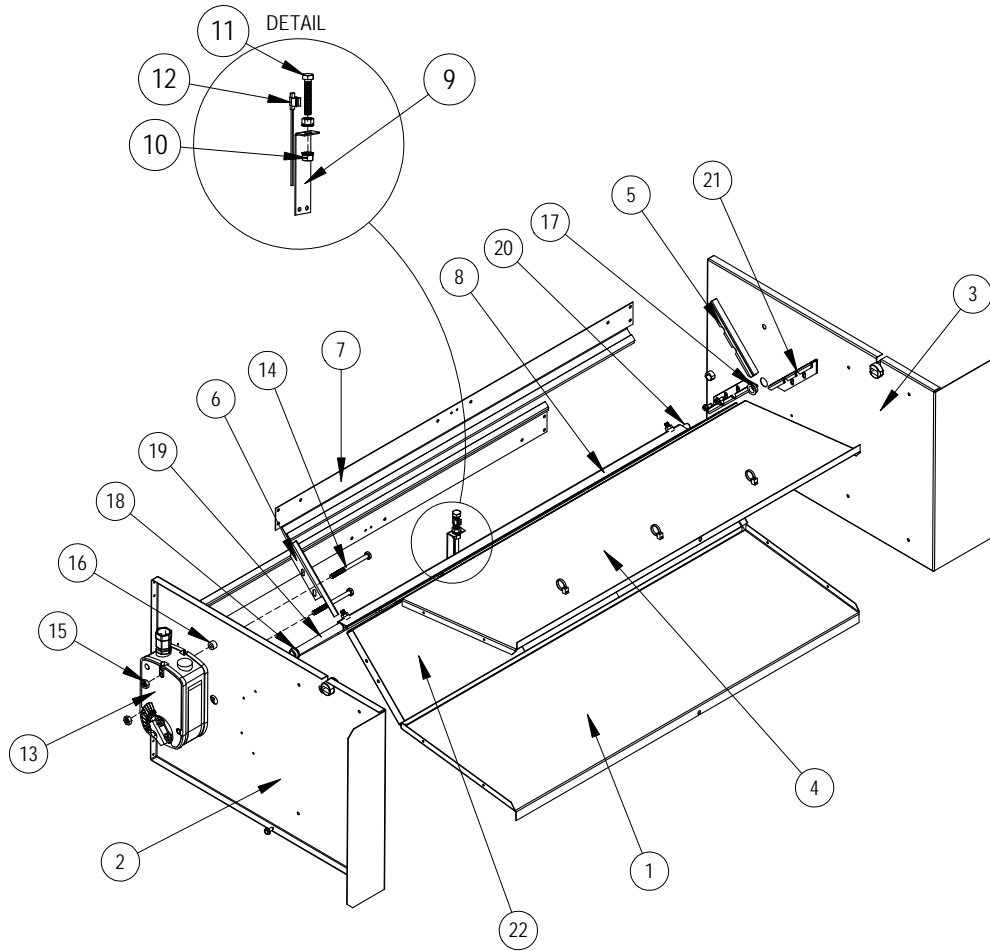
BLOWER ASSEMBLY



SEXP-718

Dwg. No.	Part Number	Description	S900-338
1	151-117	Blower Housing	2
2	5152-072	Blower Wheel	X
3	5152-096	Blower Wheel	X
4	144-167	Diffuser	2
5	105-880	Blower Angle	4
6	129-020	Cradle Motor Mount Support	2
7	129-022	Cradle Motor Mount	X
8	S8107-021	3/4 HP Motor & Motor Controller	X
9	8200-018	Motor Mount Latch	2
10	103-514	Hold In Offset	X
11	105-1332	Rear Blower Angle	X
12	113-518	Motor Controller Mount	X

ECONOMIZER



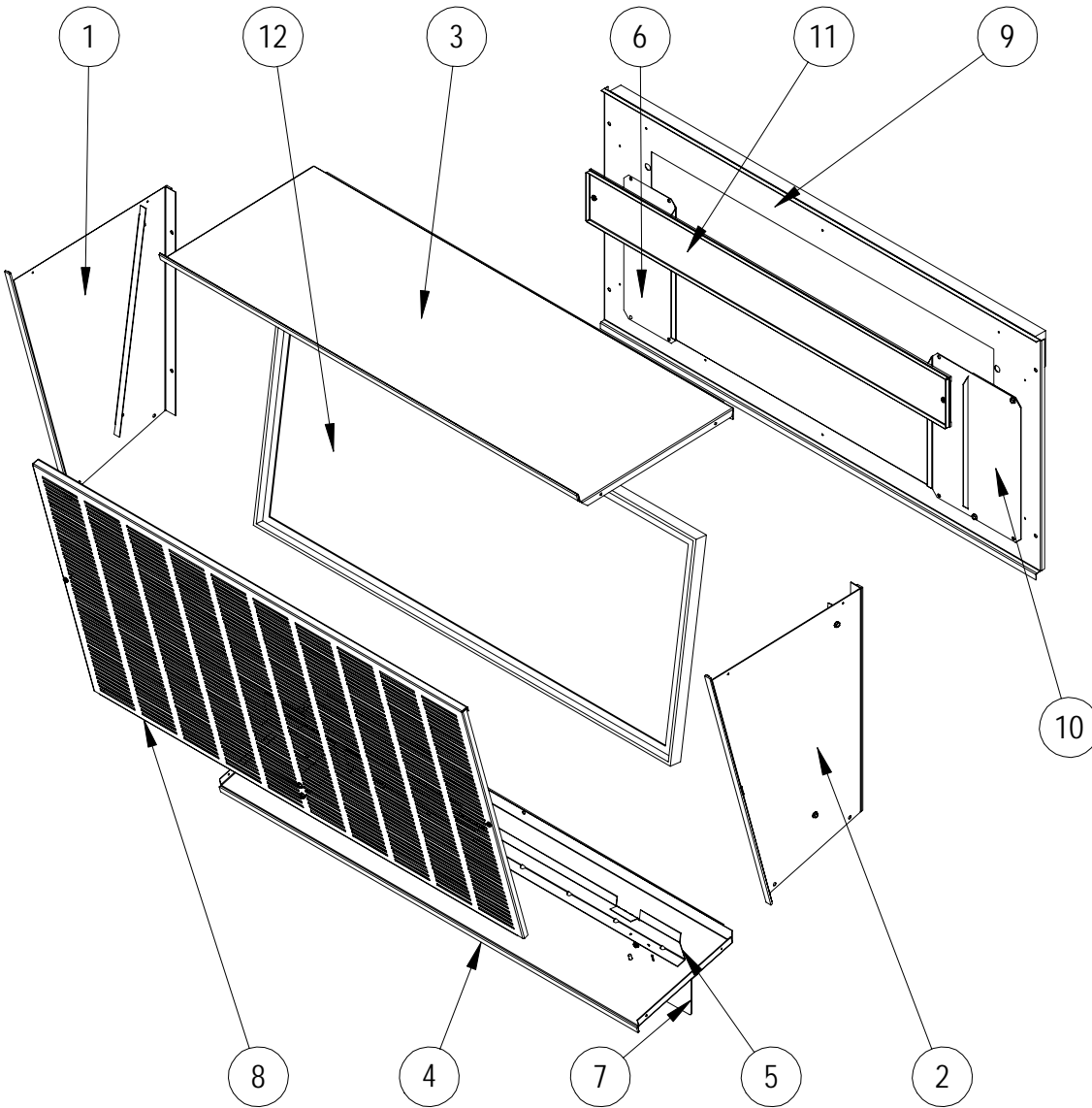
SEXP-719

RH 920-0228

LH 920-0229

Dwg. No.	Part Number	Description	RH 920-0228	LH 920-0229
1	127-424	Lower Partition / Base	X	X
2	S101X815	Left Side	X	
2	S101Y816	Left Side		X
3	S101X816	Right Side	X	
3	S101Y815	Right Side		X
4	S137-667	Upper Partition	X	X
5	S105X1229	Right Economizer Angle	2	2
6	S105X1278	Blade Angle	X	X
7	S105-1231	Rear Upper Angle	2	2
8	S139-302	Damper Blade	X	X
9	113-523	Sensor Bracket	X	X
10	1012-210	5/16 Nut	2	2
11	1012-052	5/16 x 1-3/4 Bolt	X	X
12	8408-044	Defrost Sensor	X	X
13	8602X075	Actuator	X	
13	8602Y075	Acuator		X
14	1012-174	1/4 x 3-1/4 Hex Cap Screw	2	2
15	1012-201	1/4 Hex Nut	2	2
16	5451-028	Nylon Sleeve	2	2
17	8602-039	Bronze Bushing	X	X
18	8602-052	1/2" I.D. Bronze Bushing	X	X
19	8602-060	Drive Pin 1/2"	X	X
20	8602-038	Damper Pin with Hardware	X	X
21	S105Y1229	Left Economizer Angle	3	3
22	143-186	Block Off Plate	X	X
NS	910-1920	OD Dry Bulb Sensor Assembly	X	X
NS	910-1921	Supply Air Sensor Assembly	X	X

ECONOMIZER AIR HOOD



SEXP-675

ECONOMIZER AIR HOOD

Reference Drawing on Page 14

ECONOMIZER AIR HOOD

1	S101-777-* ①	Right Side	X
2	S101-778-* ①	Left Side	X
3	S107-328-* ①	Hood Top	X
4	S127-449-* ①	Hood Bottom	X
5	113-494	Bottom Fill Bracket	X
6	133-241	Side Fill Panel	X
7	113-484-* ①	Bottom Divider Bracket	X
8	S115-259-* ①	Hood Front	X
9	S153-570-* ①	Hood Mounting Door	X
10	133-240	Control Panel Cover	X
11	S153-564	Filter Door	X
12	7003-062	Mist Filter	X

① Exterior cabinet parts are manufactured with various paint color options. To ensure that you receive the proper paint color, you must include the complete model and serial number of the unit for which cabinet parts are being ordered.