

---

# REPLACEMENT PARTS MANUAL

---

## Q-TEC™ Series Packaged Heat Pump

### Models:

Q24H4-A	Q30H4-A	Q36H4-A
Q24H4-B	Q30H4-B	Q36H4-B
Q24H4-C	Q30H4-C	Q36H4-C
Q24H4DA	Q30H4DA	Q36H4DA
Q24H4DB	Q30H4DB	Q36H4DB
Q24H4DC	Q30H4DC	Q36H4DC

---

### Contents

Description	Page
External Components – Standard & Dehum.	
♦ Exploded View .....	2
♦ Usage List .....	3
Internal Components – Standard & Dehum.	
♦ Exploded View .....	4
♦ Usage List .....	5
Functional Components – Standard & Dehum.	
♦ Exploded View .....	6
♦ Usage List .....	7
Control Panel Components – Standard & Dehum.	
♦ Layout View .....	8
♦ Usage List .....	9
Blower Assembly Components – Q24/30H4	
♦ Exploded View and Usage List .....	10
Blower Assembly Components – Q236H4	
♦ Exploded View and Usage List .....	11

### General Notes

- Revised and/or additional pages may be issued from time to time.
- A complete and current manual consists of pages shown in the following contents section.

### Important

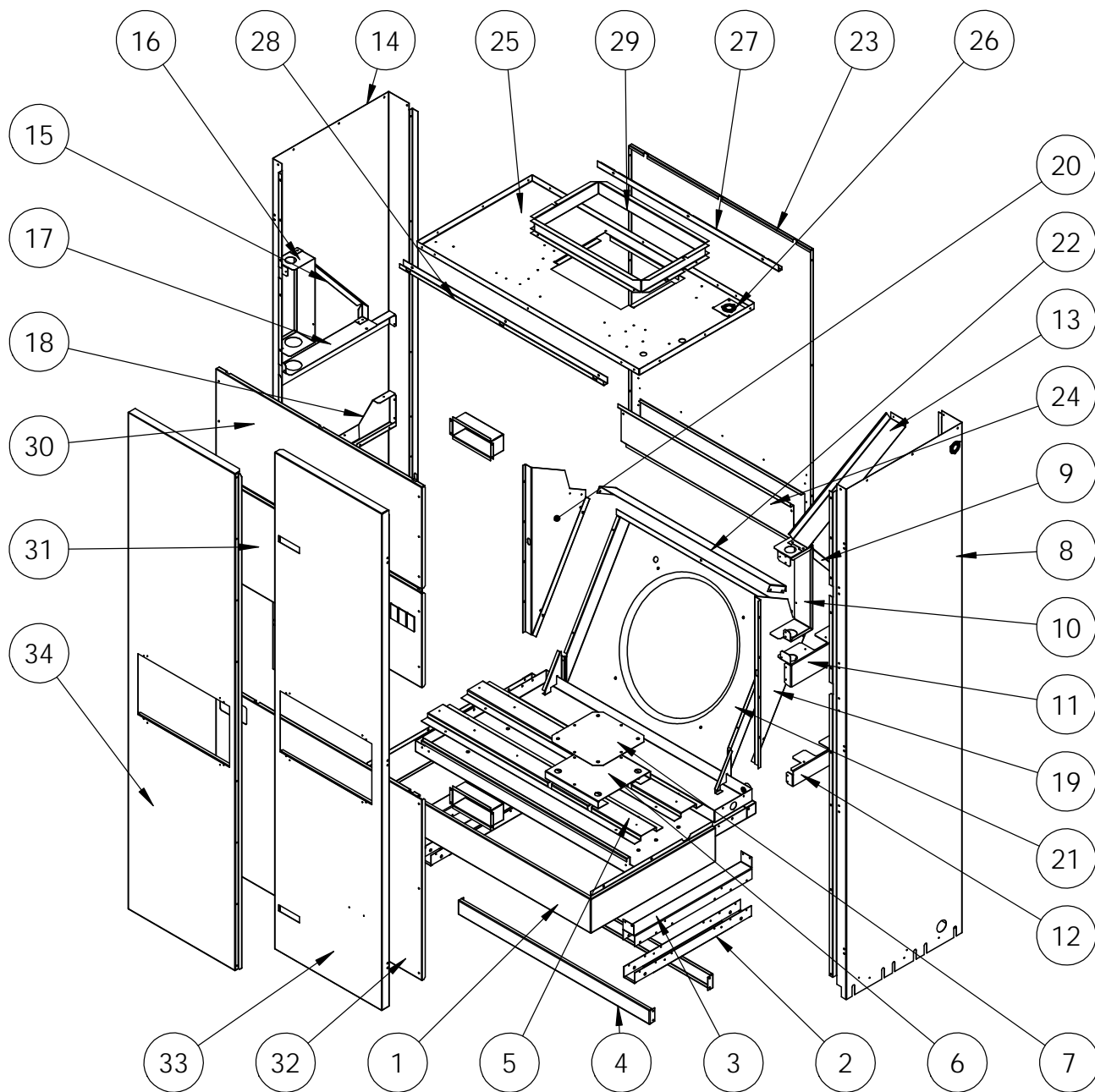
- Contact the installing and/or local Bard distributor for all parts requirements. Make sure to have the complete model and serial number available from the unit rating plates.



Bard Manufacturing Company, Inc.  
Bryan, Ohio 43506  
[www.bardhvac.com](http://www.bardhvac.com)

Manual: 2110-1568  
Supersedes: **NEW**  
Date: 8-4-20

## EXTERNAL COMPONENTS – STANDARD & DEHUMIDIFICATION



SEXP-1022

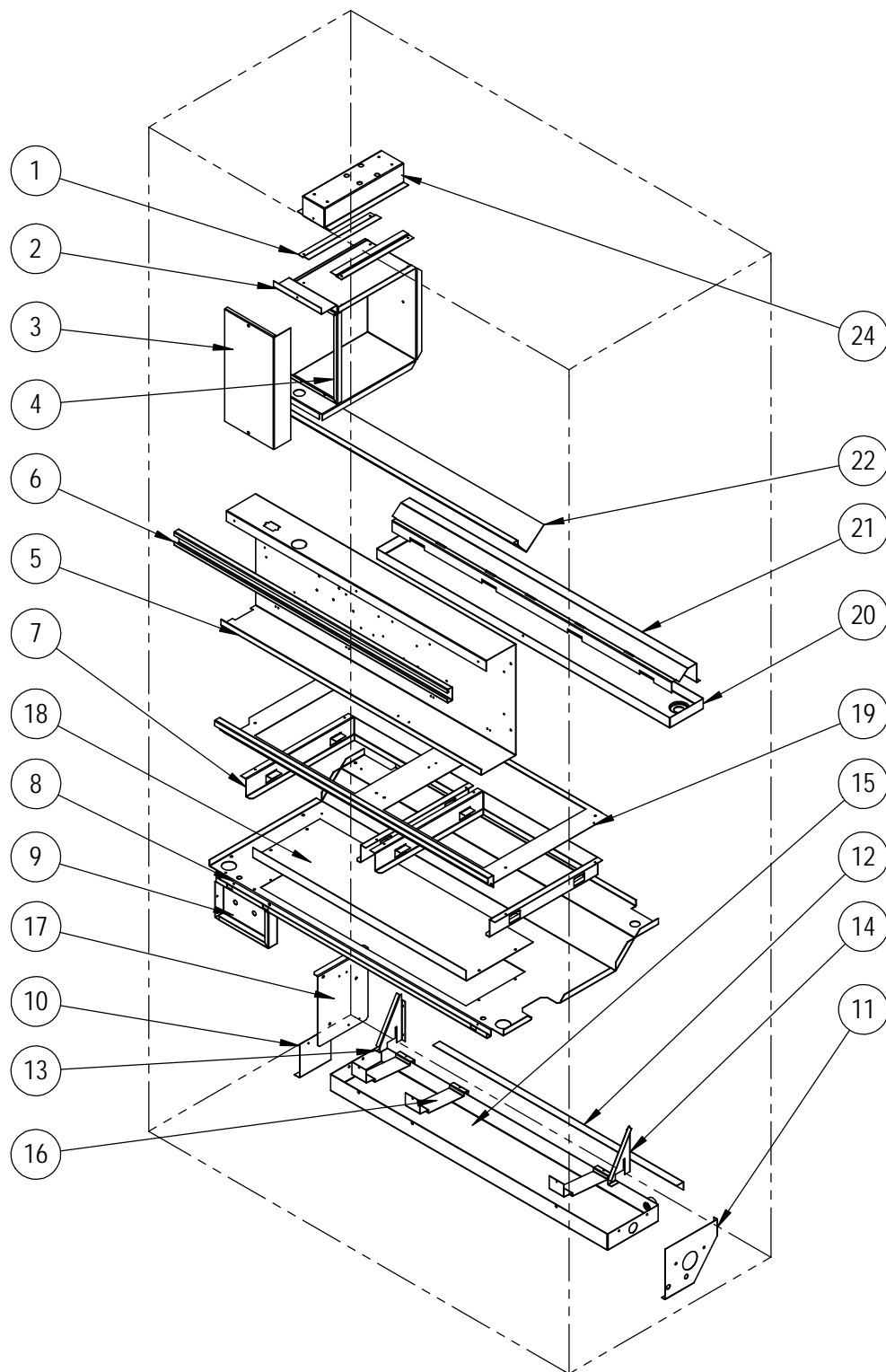
## EXTERNAL COMPONENTS – STANDARD & DEHUMIDIFICATION

Dwg No.	Part Number	Description	Q24H4-A, B, C	Q24H4DA, B, C	Q30H4-A, B, C	Q30H4DA, B, C	Q36H4-A, B, C	Q36H4DA, B, C
1	135-401-*	Base Trim	X	X	X	X	X	X
2	141-510	Lower Wheel Rail	2	2	2	2	2	2
3	141-509	Upper Wheel Rail	2	2	2	2	2	2
4	135-399	Base Supports/Seal Angles	2	2	2	2	2	2
5	527-588-X	Base Assembly	X	X	X	X	X	X
6	141-368	Compressor Support	X	X	X	X	X	X
7	140-369	Compressor Support Plate	X	X	X	X	X	X
8	501-1088-*	Right Side	X	X	X	X	X	X
9	146-057	Right Evaporator Support Angle	X	X	X	X	X	X
10	105-1486	Right Control Panel Mounting Bracket	X	X	X	X	X	X
11	105-1502	Right Filter Partition Mounting Angle	X	X	X	X	X	X
12	105-1483	Right Condenser Partition Angle	X	X	X	X	X	X
13	135-400	Field Wire Channel	X	X	X	X	X	X
14	501-1089-*	Left Side	X	X	X	X	X	X
15	146-058	Left Evaporator Support Angle	X	X	X	X	X	X
16	105-1487	Left Control Panel Mounting Bracket	X	X	X	X	X	X
17	105-1503	Left Filter Partition Mounting Angle	X	X	X	X	X	X
18	105-1484	Left Condenser Partition Angle	X	X	X	X	X	X
19	125Y098	Condenser Right Side	X	X	X	X	X	X
20	125X098	Condenser Left Side	X	X	X	X	X	X
21	125-101	Fan Shroud	X	X	X	X	X	X
22	553-728	Condenser Top Fill	X	X	X	X	X	X
23	509-430	Back	X	X	X	X	X	X
24	542-054	Fresh Air Intake Blank Off Plate	O	O	O	O	O	O
25	107-393	Top	X	X	X	X	X	X
26	136-359	T.K.O. Plate	X	X	X	X	X	X
27	105-1481	Upper Rear Captivation Plate	X	X	X	X	X	X
28	105-1482	Upper Front Captivation Plate	X	X	X	X	X	X
29	111-329	Duct Flange	2	2	2	2	2	2
30	553-727	Blower Access Panel Assembly	X	X	X	X	X	X
31	533-317	Control Panel Cover Assembly	X	X	X	X	X	X
32	553-728	Condenser Access Panel Assembly	X	X	X	X	X	X
33	553-725-*	Right Door Assembly	X	X	X	X	X	X
34	553-726-*	Left Door Assembly	X	X	X	X	X	X

\* Exterior cabinet parts are manufactured with various paint color options. To ensure the proper paint color is received, include the complete model and serial number of the unit for which cabinet parts are being ordered.

X – Standard Component  
O – Optional Component

## INTERNAL COMPONENTS – STANDARD & DEHUMIDIFICATION



SEXP-1025

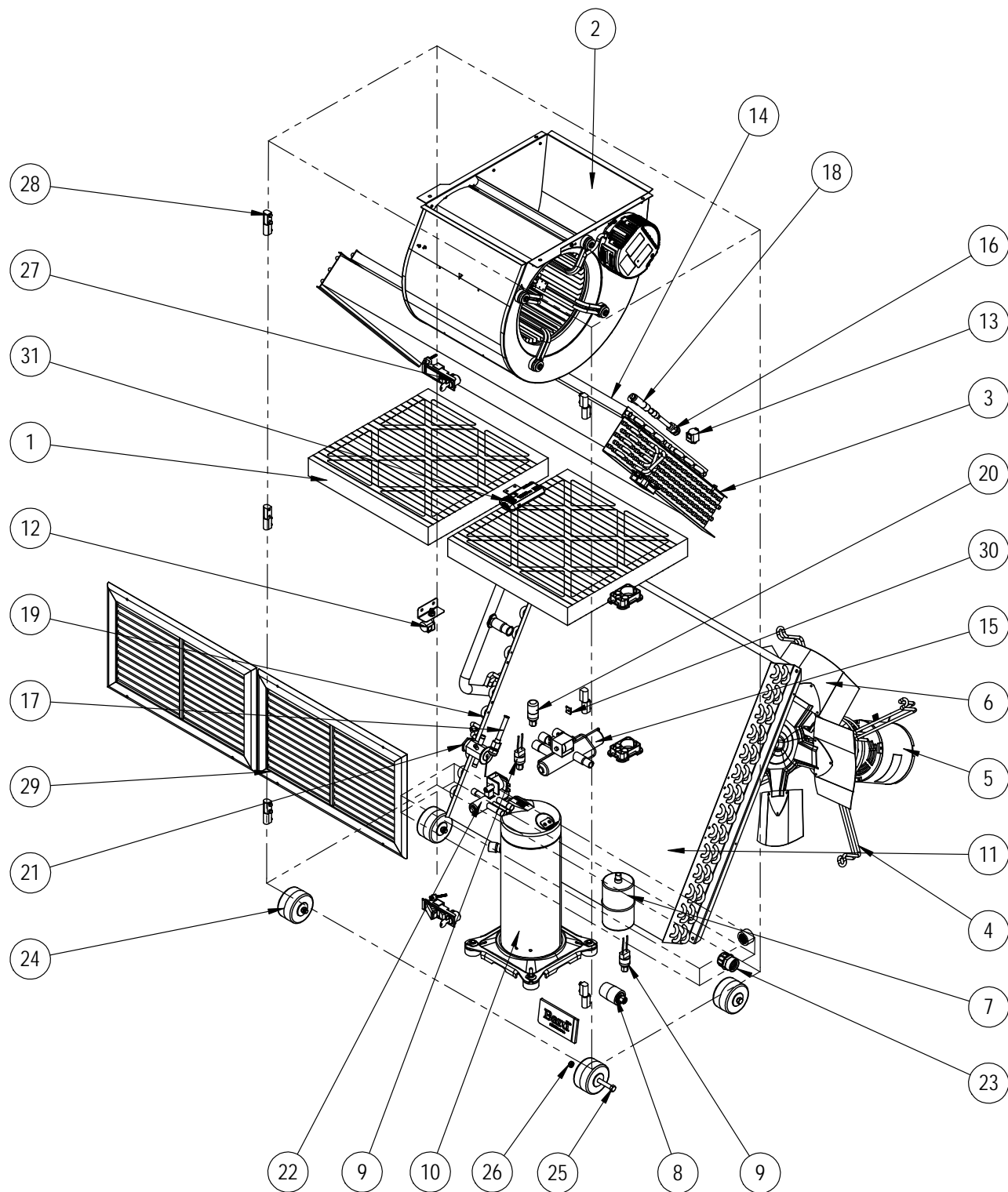
## INTERNAL COMPONENTS – STANDARD & DEHUMIDIFICATION

Dwg No.	Part Number	Description	Q24H4-A, B, C	Q24H4DA, B, C	Q30H4-A, B, C	Q30H4DA, B, C	Q36H4-A, B, C	Q36H4DA, B, C
1	103-417	Heater Package Offsets	2	2	2	2	2	2
2	117-191	Heat Strip Mounting Bracket	X	X	X	X	X	X
3	133-321	Heater Package Cover	X	X	X	X	X	X
4	105-987	Heat Strip Angle	X	X	X	X	X	X
5	117-422	Control Panel	X	X	X	X	X	X
6	165-618	Front "C" Channel	X	X	X	X	X	X
7	131-172	Filter Angle	2	2	2	2	2	2
8	121-604	Condenser Partition	X	X	X	X	X	X
9	113-824	Service Port Mounting Bracket	X	X	X	X	X	X
10	141-230	Left Condenser Drain Pan Bracket	X	X	X	X	X	X
11	141-511	Right Condenser Drain Pan Bracket	X	X	X	X	X	X
12	143-237	Condenser Pan Fill Angle	X	X	X	X	X	X
13	131Y173	Left Condenser Fill Pan Angle	X	X	X	X	X	X
14	131X173	Right Condenser Fill Pan Angle	X	X	X	X	X	X
15	123-164	Condenser Drain Pan	X	X	X	X	X	X
16	140-513	Copper Hold Down Bracket	3	3	3	3	3	3
17	113-834	Fan Motor Control Bracket	X	X	X	X	X	X
18	536-351*	Exhaust Blank Off Plate	O	O	O	O	O	O
19	131-171	Filter Partition	X	X	X	X	X	X
20	123-163	Evaporator Drain Pan	X	X	X	X	X	X
21	105-1476	Evaporator Coil Riser	X	X	X	X	X	X
22	143-235	Evaporator Top Coil Fill					X	X
22	143-236	Evaporator Top Coil Fill	X	X	X	X		
24	113-850	Heater Package Mounting Bracket	X	X	X	X	X	X

\* Unit may have alternative vent installed. Please see vent manual for part information.

X – Standard Component  
O – Optional Component

## FUNCTIONAL COMPONENTS – STANDARD & DEHUMIDIFICATION



SEXP-1023

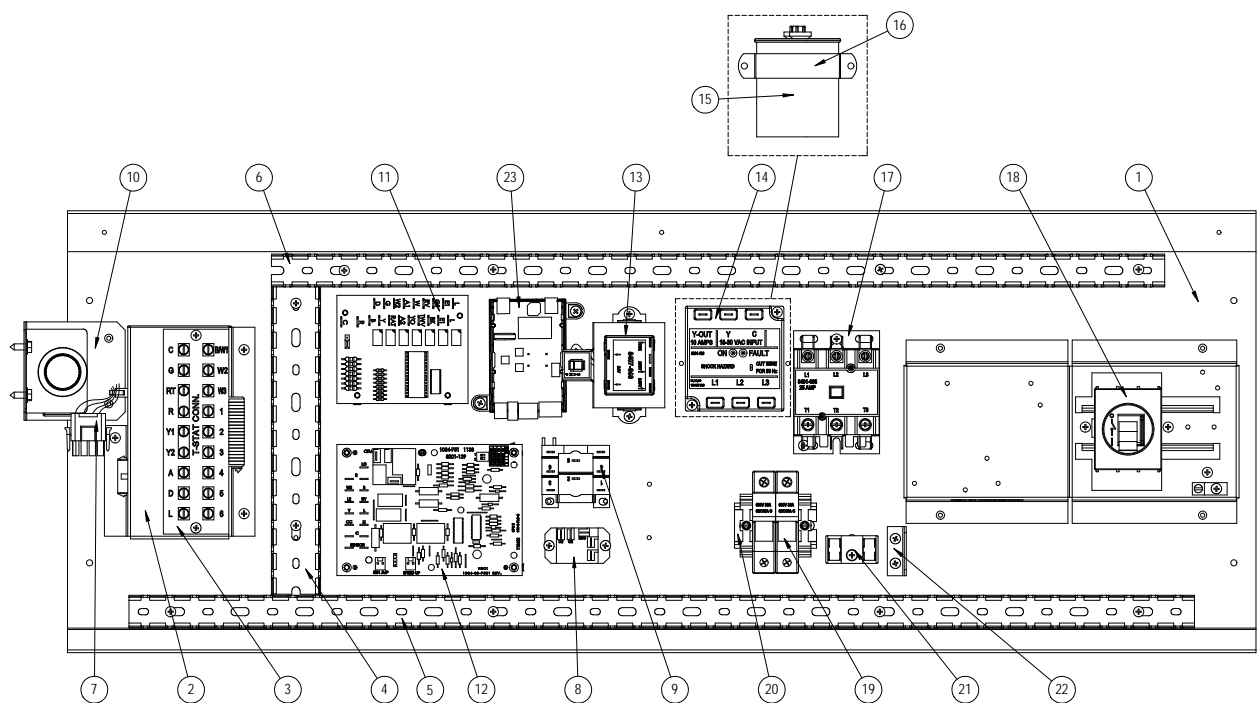
# FUNCTIONAL COMPONENTS – STANDARD & DEHUMIDIFICATION

Dwg No.	Part Number	Description	Q24H4-A	Q24H4-B	Q24H4-C	Q24H4DA	Q24H4DB	Q24H4DC	Q30H4-A	Q30H4-B	Q30H4-C	Q30H4DA	Q30H4DB	Q30H4DC	Q30H4-A	Q30H4-B	Q30H4-C	Q30H4DA	Q30H4DB	Q30H4DC
1	7004-009	Air Filter 1" Throw-Away (16 x 16 x 1)	2	2	2	2	2	2	2	2	2	2	2	2	2	2	2	2	2	2
1	7003-032 ①	Air Filter 2" MERV 4 (16 x 16 x 2)	2	2	2	2	2	2	2	2	2	2	2	2	2	2	2	2	2	2
1	7004-034 ①	Air Filter 2" MERV 8 (16 x 16 x 2)	2	2	2	2	2	2	2	2	2	2	2	2	2	2	2	2	2	2
1	7004-069 ①	Air Filter 2" MERV 13 (16 x 16 x 2)	2	2	2	2	2	2	2	2	2	2	2	2	2	2	2	2	2	2
2	5154-002-0212	Blower Assembly	X	X	X	X	X	X	X	X	X	X	X	X						
2	5154-002-0211	Blower Assembly													X	X	X	X	X	X
2	5154-005-0210	Blower Assembly																		
3	917-0433	Indoor Coil w/Distributor Assembly	X	X	X															
3	917-0434	Indoor Coil - Coated w/Distributor Assembly	O	O	O															
3	917-0436	Indoor Coil w/Distributor Assembly				X	X	X				X	X	X						
3	917-0437	Indoor Coil - Coated w/Distributor Assembly				O	O	O				O	O	O						
3	917-0428	Indoor Coil w/Distributor Assembly							X	X	X									
3	917-0429	Indoor Coil - Coated w/Distributor Assembly							O	O	O									
3	917-0424	Indoor Coil w/Distributor Assembly													X	X	X			
3	917-0425	Indoor Coil - Coated w/Distributor Assembly													O	O	O			
3	917-0439	Indoor Coil w/Distributor Assembly																X	X	X
3	917-0440	Indoor Coil - Coated w/Distributor Assembly																O	O	O
4	8200-001	Fan Motor Mount	X	X	X	X	X	X	X	X	X	X	X	X	X	X	X	X	X	X
5	8106-047-0213	Condenser Motor	X	X	X	X	X	X	X	X	X	X	X	X	X	X	X	X	X	X
6	5151-055	Fan Blade	X	X	X	X	X	X	X	X	X	X	X	X	X	X	X	X	X	X
7	5201-010	Filter Drier	X	X	X	X	X	X	X	X	X	X	X	X	X	X	X	X	X	X
8	8406-105	Low Ambient Control (LAC)	O	O	O	O	O	O							O	O	O	O	O	O
8	8406-112	Low Ambient Control (LAC)							O	O	O	O	O	O						
9	8406-142	High Pressure Switch	X	X	X	X	X	X	X	X	X	X	X	X	X	X	X	X	X	X
9	8406-135	Low Pressure Switch	X	X	X	X	X	X	X	X	X	X	X	X	X	X	X	X	X	X
10	8000-276	Compressor	X			X														
10	8000-367	Compressor		X			X													
10	8000-368	Compressor			X			X												
10	8000-468	Compressor							X			X								
10	8000-469	Compressor							X				X							
10	8000-470	Compressor								X				X						
10	8000-463	Compressor									X				X					
10	8000-464	Compressor												X		X			X	
10	8000-465	Compressor														X				X
11	917-0430	Outdoor Coil (Includes Distributor)	X	X	X	X	X	X	X	X	X	X	X	X						
11	917-0431	Outdoor Coil - Coated (Includes Distributor)	O	O	O	O	O	O	O	O	O	O	O	O						
11	917-0426	Outdoor Coil (Includes Distributor)													X	X	X	X	X	X
11	917-0427	Outdoor Coil - Coated (Includes Distributor)													O	O	O	O	O	O
12	8408-060	Outdoor Temperature Sensor	O	O	O	O	O	O	O	O	O	O	O	O	O	O	O	O	O	O
13	8408-048	Freeze Protection Thermostat	O	O	O	O	O	O	O	O	O	O	O	O	O	O	O	O	O	O
14	5051-102	Reheat Coil				X	X	X				X	X	X				X	X	X
14	5054-102	Reheat Coil - Coated				O	O	O				O	O	O				O	O	O
15	5650-040	Reversing Valve	X	X	X	X	X	X	X	X	X	X	X	X	X	X	X	X	X	X
16	800-0459	Distributor Assembly - Indoor Coil	X	X	X															
16	800-0421	Distributor Assembly - Indoor Coil				X	X	X				X	X	X						
16	800-0499	Distributor Assembly - Indoor Coil							X	X	X									
16	800-0494	Distributor Assembly - Indoor Coil													X	X	X			
16	800-0417	Distributor Assembly - Indoor Coil																X	X	X
17	800-0497	Distributor Assembly - Outdoor Coil													X	X	X	X	X	X
17	800-0498	Distributor Assembly - Outdoor Coil	X	X	X	X	X	X	X	X	X	X	X	X						
18	5651S245	Electronic Expansion Valve				X	X	X				X	X	X				X	X	X
18	905-0770	Electronic Expansion Valve (EEV) Assembly				X	X	X				X	X	X				X	X	X
19	8408-045	Defrost Thermistor	X	X	X	X	X	X	X	X	X	X	X	X	X	X	X	X	X	X
20	8406-158	Low Pressure Transducer				X	X	X				X	X	X				X	X	X
21	5651-178	Heating Expansion Valve	X	X	X				X	X	X				X	X	X			
22	5650-051	Dehumidification Valve				X	X	X				X	X	X				X	X	X
23	6094-003	Drain Fitting	X	X	X	X	X	X	X	X	X	X	X	X	X	X	X	X	X	X
24	1171-035	Wheel	4	4	4	4	4	4	4	4	4	4	4	4	4	4	4	4	4	4
25	1012-129	Bolt - Shoulder	4	4	4	4	4	4	4	4	4	4	4	4	4	4	4	4	4	4
26	1012-224	Nut - Locking	4	4	4	4	4	4	4	4	4	4	4	4	4	4	4	4	4	4
27	1171-063	Door Latch	2	2	2	2	2	2	2	2	2	2	2	2	2	2	2	2	2	2
28	5400-005	Door Hinge Assembly	6	6	6	6	6	6	6	6	6	6	6	6	6	6	6	6	6	6
29	7051-095	Return Air Louvers	2	2	2	2	2	2	2	2	2	2	2	2	2	2	2	2	2	2
30	1171-070	"U" Clip Fastener	18	18	18	18	18	18	18	18	18	18	18	18	18	18	18	18	18	18
31	910-2122	Mixed Air Sensor Assembly	O	O	O	O	O	O	O	O	O	O	O	O	O	O	O	O	O	O
NS	5651-219	Check Valve				2	2	2				2	2	2				2	2	2
NS	5451-024	Tubing Insulation Grommet	3	3	3	3	3	3	3	3	3	3	3	3	3	3	3	3	3	3
NS	6031-009	Coremax Valve Core	2	2	2	2	2	2	2	2	2	2	2	2	2	2	2	2	2	2

NS – Not Shown  
① – Optional on these models

X – Standard Component  
O – Optional Component

# CONTROL PANEL COMPONENTS – STANDARD & DEHUMIDIFICATION



SEXP-1024



# CONTROL PANEL COMPONENTS – STANDARD & DEHUMIDIFICATION

Dwg No.	Part Number	Description	Q24H4-A	Q24H4-B	Q24H4-C	Q24H4-DA	Q24H4-DB	Q24H4-DC	Q30H4-A	Q30H4-B	Q30H4-C	Q30H4-DA	Q30H4-DB	Q30H4-DC	Q30H4-A	Q30H4-B	Q30H4-C	Q30H4-DA	Q30H4-DB	Q30H4-DC
1	517-422	Control Panel	X	X	X	X	X	X	X	X	X	X	X	X	X	X	X	X	X	X
2	117-424	Low Voltage Box	X	X	X	X	X	X	X	X	X	X	X	X	X	X	X	X	X	X
3	8607-063	Low Voltage Strip	X	X	X	X	X	X	X	X	X	X	X	X	X	X	X	X	X	X
4	8611-140-0903	Cable Duct - 9 3/16"	X	X	X	X	X	X	X	X	X	X	X	X	X	X	X	X	X	X
5	8611-140-3200	Cable Duct - 32"	X	X	X	X	X	X	X	X	X	X	X	X	X	X	X	X	X	X
6	8611-140-2704	Cable Duct - 27 1/4"	X	X	X	X	X	X	X	X	X	X	X	X	X	X	X	X	X	X
7	3000-1524	Vent Jumper Plug (used when no vent installed)	X	X	X	X	X	X	X	X	X	X	X	X	X	X	X	X	X	X
8	8201-130	Blower Speed Relay	X	X	X	X	X	X	X	X	X	X	X	X	X	X	X	X	X	X
9	8201-086	OD T-Stat/LAC Relay	O	O	O	O	O	O	O	O	O	O	O	O	O	O	O	O	O	O
10	8408-028	Outdoor Thermostat	O	O	O	O	O	O	O	O	O	O	O	O	O	O	O	O	O	O
11	8201-113	Dehumidification Logic Board				X	X	X				X	X	X				X	X	X
12	8201-129	Defrost Logic Control Board w/Sensor	X	X	X	X	X	X	X	X	X	X	X	X	X	X	X	X	X	X
13	8407-069	Transformer	X	X	X	X	X	X	X	X	X	X	X	X	X	X	X	X	X	X
14	8201-126	Phase Monitor ①		X	X		X	X		X	X		X	X		X	X		X	X
15	8552-086	Compressor Capacitor	X			X			X			X						X		
15	8552-043	Compressor Capacitor												X				X		
16	8550-006	Capacitor Strap	X			X			X			X						X		
16	8550-008	Capacitor Strap												X				X		
17	8401-034	Compressor Contactor	X			X			X			X			X			X		
17	8401-035	Compressor Contactor		X	X		X	X		X	X		X	X		X	X		X	X
18	8615-038	Circuit Breaker 35A 2 Pole ②				X						X								
18	8615-039	Circuit Breaker 45A 2 Pole ②	X			X			X											
18	8615-051	Circuit Breaker 25A 3 Pole ②		X			X		X			X								
18	8615-054	Circuit Breaker 20A 3 Pole ②																		
18	8615-055	Circuit Breaker 40A 2 Pole ②												X				X		
18	8615-083	Circuit Breaker 30A 3 Pole ②													X			X		
18	8615-095	Toggle Disconnect			X			X			X			X			X			X
19	8615-058	Fuse Block			X			X			X			X			X			X
20	8611-210	Din Rail 2-1/2"			X			X			X			X			X			X
21	8607-017	Terminal Block			X			X			X			X			X			X
22	141-188	Heater Plug Bracket	X	X	X	X	X	X	X	X	X	X	X	X	X	X	X	X	X	X
23	8301-079-0003	EVD Control Board (Programmed )				X	X	X				X	X	X				X	X	X
NS	3000-1145	Blower Power Plug	X	X	X	X	X	X	X	X	X	X	X	X	X	X	X	X	X	X
NS	3000-1337	Compressor Wire Harness	X			X			X			X			X			X		
NS	3000-1338	Compressor Wire Harness		X	X		X	X		X	X		X	X		X	X		X	X
NS	3003-083	Control Panel Wire Harness				X						X						X		
NS	3003-084	Control Panel Wire Harness					X						X						X	
NS	3003-085	Control Panel Wire Harness						X						X						X
NS	3003-086	Control Panel Wire Harness	X						X						X					
NS	3003-087	Control Panel Wire Harness		X						X						X				
NS	3003-088	Control Panel Wire Harness			X					X							X			
NS	3003-1694	Upper Low Voltage Wire Harness	X	X	X	X	X	X	X	X	X	X	X	X	X	X	X	X	X	X
NS	4096-126	Wiring Diagram	X						X						X					
NS	4096-226	Wiring Diagram		X						X						X				
NS	4096-326	Wiring Diagram			X						X						X			
NS	4096-127	Wiring Diagram				X						X						X		
NS	4096-227	Wiring Diagram					X						X						X	
NS	4096-327	Wiring Diagram						X						X						X

NS = Not Shown

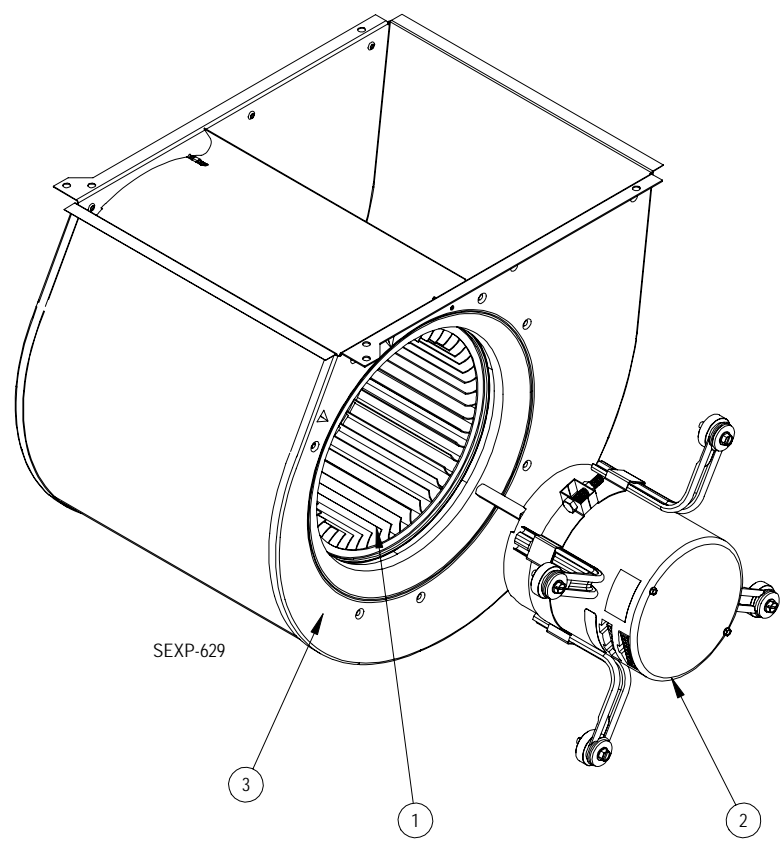
X – Standard Component

① Only used for three phase units; single phase models use capacitors.

O – Optional Component

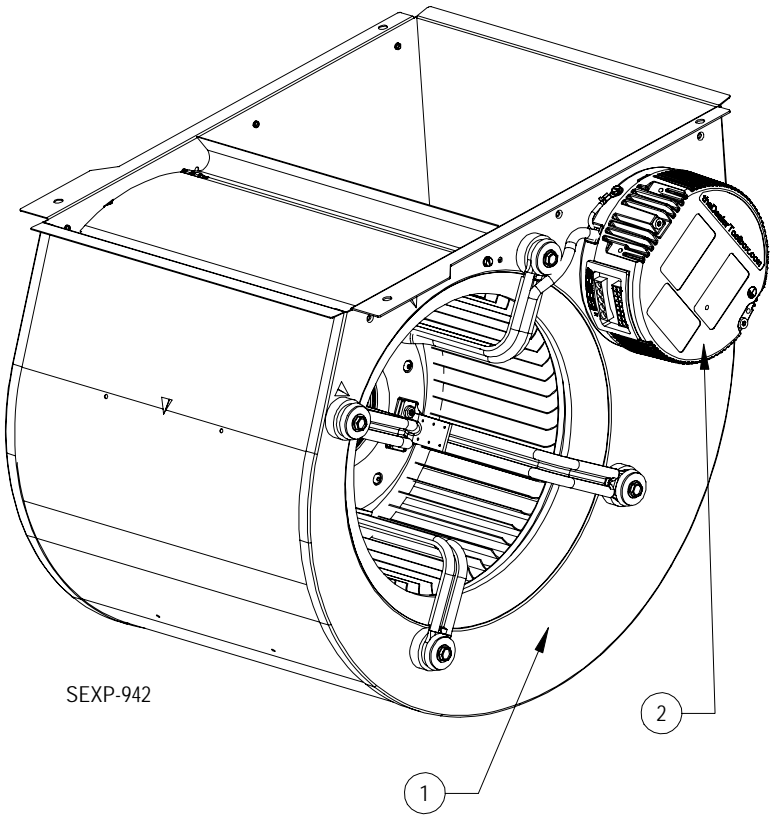
② Circuit breakers listed are for units without electric heat, "OZ" models. See heater replacement parts manual for units with electric heat.

# BLOWER ASSEMBLY COMPONENTS – Q24/30H4



Dwg No.	Part Number	Description	5154-002-0211	5154-002-0212
1	5152-049	Blower Wheel	X	X
2	S8105-059-0211	1/3 HP Programmed Motor	X	
2	S8105-059-0212	1/3 HP Programmed Motor		X
3	151-122	Housing	X	X
NS	C8105-059-0211	1/3 HP Control Only Replacement	X	
NS	C8105-059-0212	1/3 HP Control Only Replacement		X

**BLOWER ASSEMBLY COMPONENTS – Q36H4**



Dwg No.	Part Number	Description	
1	5154-007-0210	Complete Blower Assembly	X
2	C5154-007-0210	3/4 HP Programmed Motor	X

5154-007-0210