

---

# REPLACEMENT PARTS MANUAL

---

## Economizer

Models:

QECON-3 QECON-4

---

### General Notes

- Revised and/or additional pages may be issued from time to time.
- A complete and current manual consists of pages shown in the following contents section.

### Important

- Contact the installing and/or local Bard distributor for all parts requirements. Make sure to have the complete model and serial number available from the unit rating plates.

### Contents

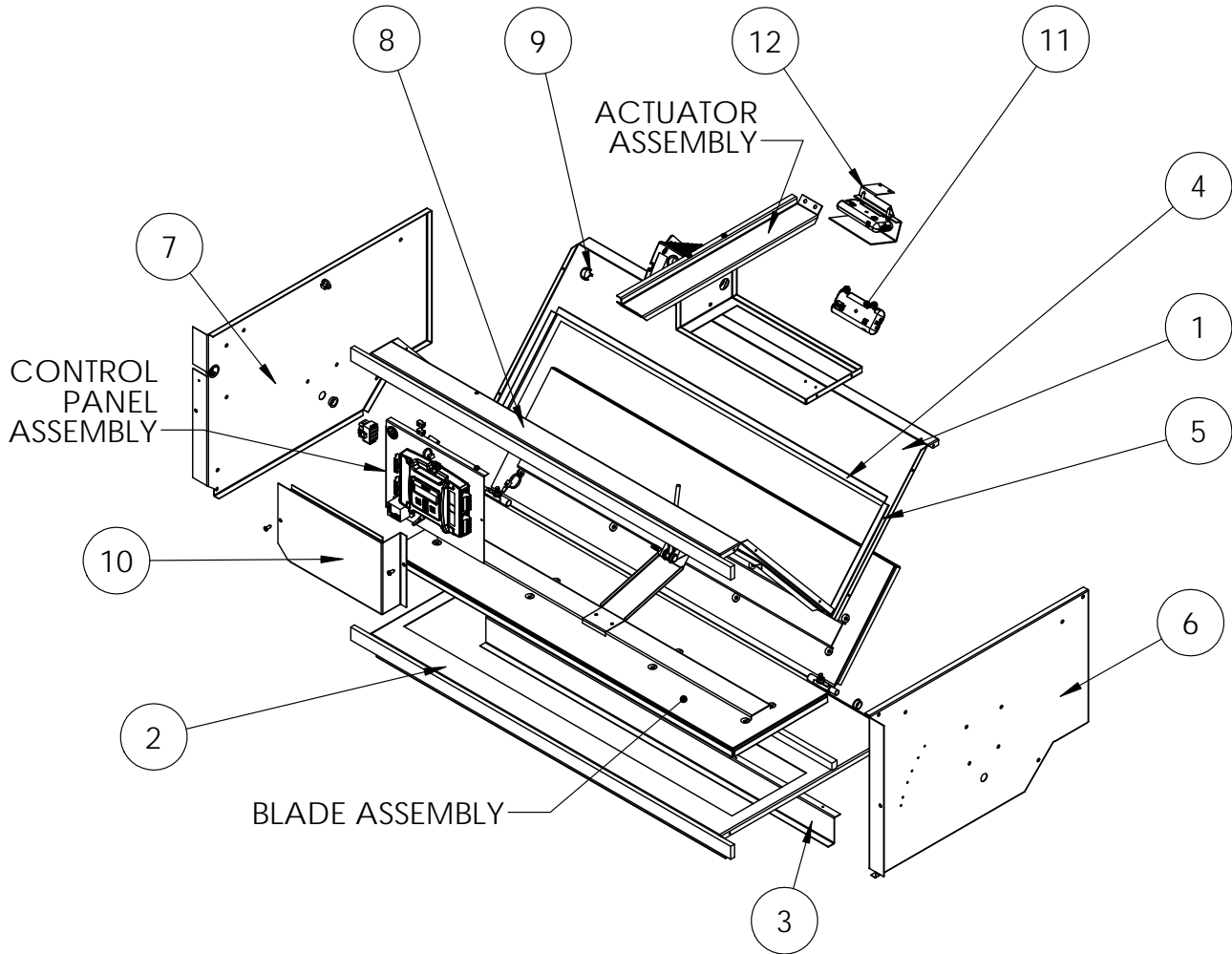
Description	Page
QECON-3, QECON-4 Economizer	
♦ Exploded View .....	2
♦ Usage List .....	3
Blade Assembly	
♦ Exploded View .....	4
♦ Usage List .....	4
Control Panel Assembly	
♦ Layout View .....	5
♦ Usage List .....	5
Actuator Assembly	
♦ Exploded View .....	6
♦ Usage List .....	6



Bard Manufacturing Company, Inc.  
Bryan, Ohio 43506  
www.bardhvac.com

Manual: 2110-1570  
Supersedes: **NEW**  
Date: 9-17-20

# OECON-3, OECON-4 ECONOMIZER



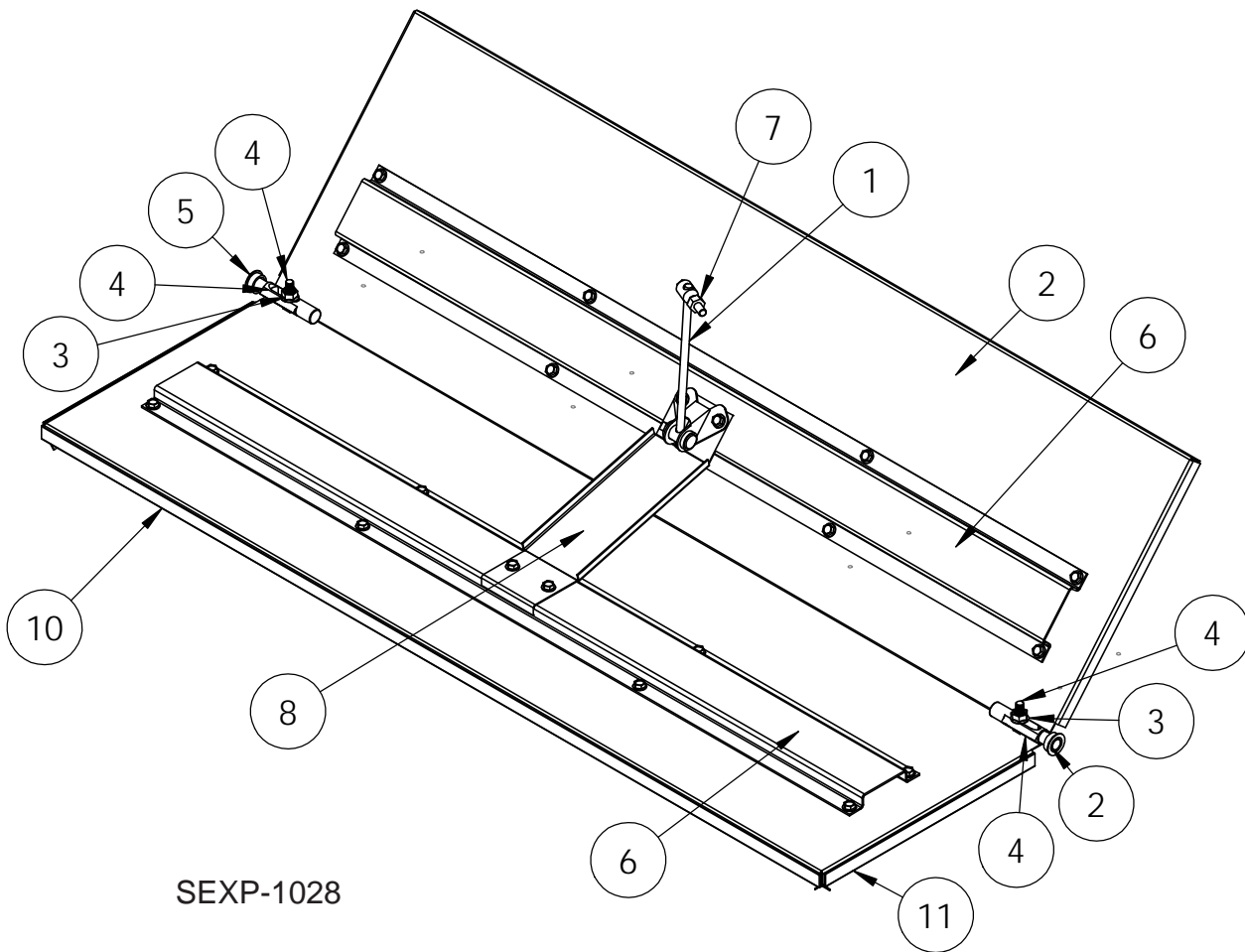
SEXP-1029

## QECON-3, QECON-4 ECONOMIZER

---

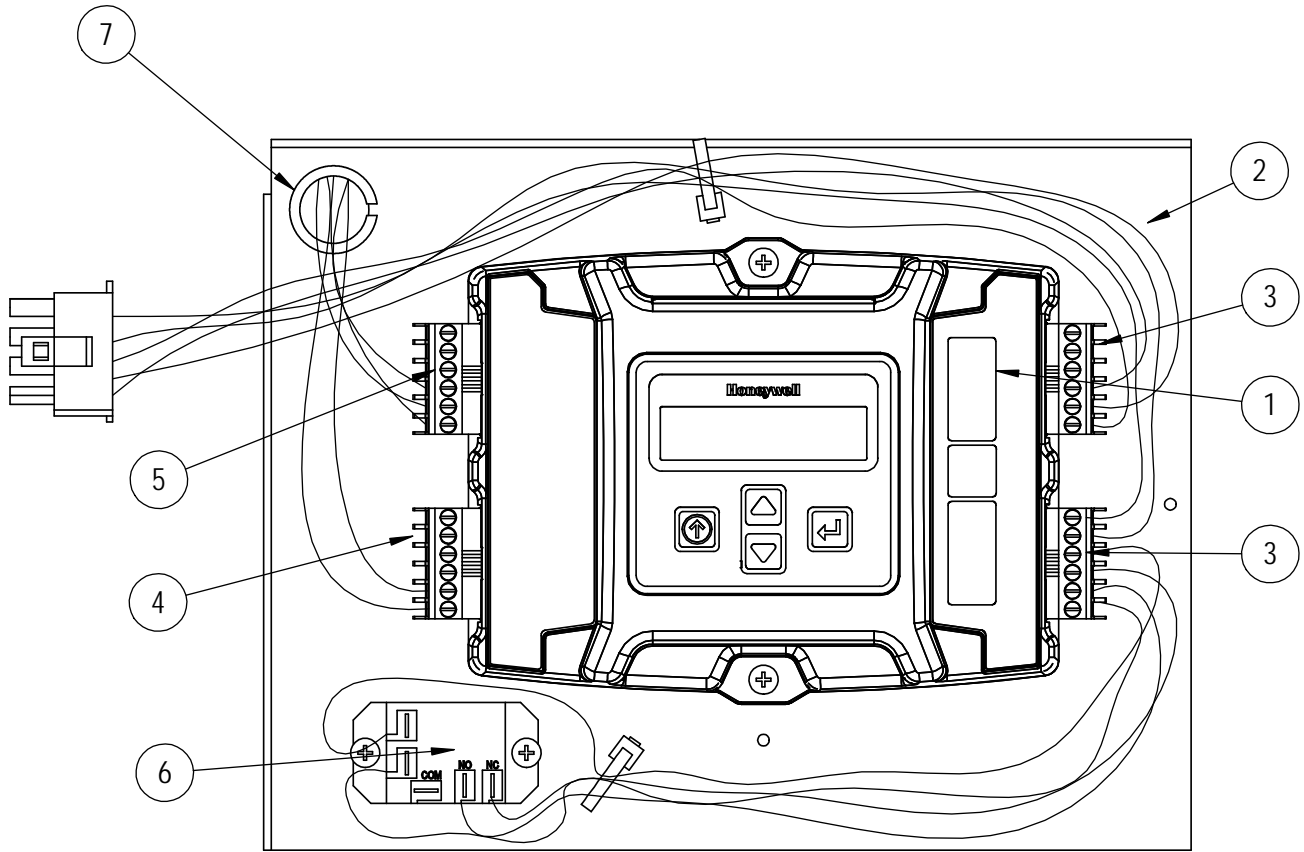
Drawing No.	Part No.	Description	QECON-3	QECON-4
1	137-981	Upper Rear Fill	X	X
2	137-980	Base	X	X
3	141-525	Base Support	X	X
4	1921-067-3300	Damper Blade Seal	2	2
5	1921-067-0814	Damper Blade Seal	4	4
6	101-1090	Right CRV Side	X	X
7	101-1091	Left CRV Side	X	X
8	137-982	Upper Front	X	X
9	8611-047	Split Bushing	3	3
10	133-320	Control Panel Cover	X	X
11	8602-063	Outdoor Temperature Enthalpy Sensor	X	X
12	910-2122	Mixed Air Sensor Assembly	X	X

# BLADE ASSEMBLY



Drawing No.	Part No.	Description	GECON-3	GECON-4
1	8602-042	1/4" X 6" Rod	1	1
2	139-435	Blade	1	1
3	1012-221	1/4-20 Hex Flange Nut	2	2
4	8602-038	Damper Pin with Hardware	2	2
5	8602-052	1/2" Bronze Bushing	2	2
6	141-514	Blade Support	2	2
7	8602-008	Ball Joint	1	1
8	141-525	Support Angle	1	1
9	8602-040	BKP-24 Bracket	1	1
10	1921-067-3408	Damper Blade Seal	1	1
11	1921-067-0905	Damper Blade Seal	2	2

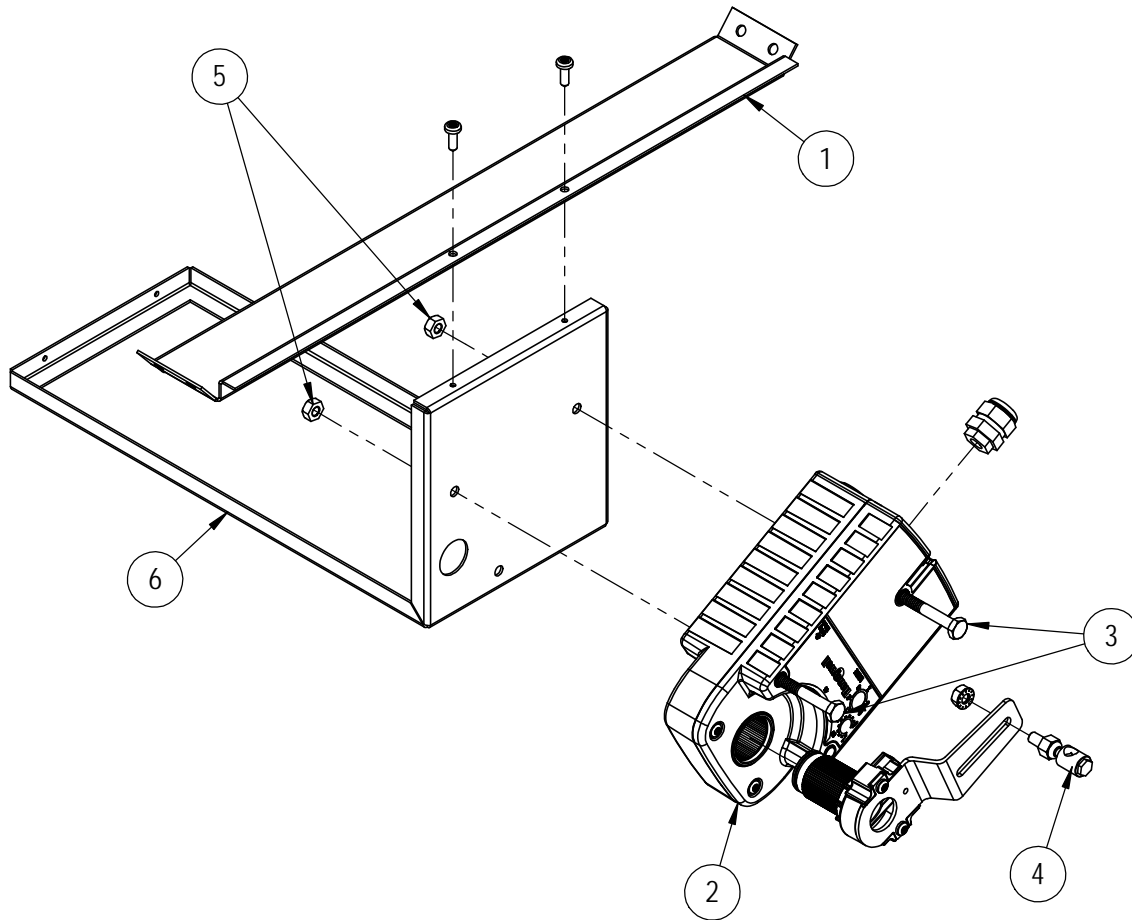
# CONTROL PANEL ASSEMBLY



SEXP-1030

Drawing No.	Part No.	Description	QECON-3	QECON-4
1	8602-056-0003A	Programmed Economizer Module	X	X
2	117-423	Jade Module Plate	X	X
3	3000-1681	Wire Assembly	X	X
4	3000-1682	Wire Assembly	X	X
5	3000-1683	Wire Assembly	X	X
6	8201-130	Relay, SPDT Pilot Duty	X	X
7	8611-047	Snap Bushing	X	X

# ACTUATOR ASSEMBLY



SEXP-1031

Drawing No.	Part No.	Description	QECON-3	QECON-4
1	141-515	Actuator Support	X	X
2	8602-094	Actuator Motor with Crank Arm	X	X
3	1012-174	1/4"-20X3 - 1/4 Hex Screw	2	2
4	8602-008	Ball Joint	X	X
5	1012-201	1/4-20 Hex Nut	2	2
6	141-516	Actuator Mount	X	X