
REPLACEMENT PARTS MANUAL

PACKAGE AIR CONDITIONERS

MODELS: **P60A7-C18HD021**
P72A2-C18HD021
P72A2-F14HD021

General Notes

- Revised and/or additional pages may be issued from time to time.
- A complete and current manual consists of pages shown in the following contents section.

Important

- Contact the installing and/or local Bard distributor for all parts requirements. Make sure you have the complete model and serial number available from the unit rating plates.

Contents

| Description | Page |
|-----------------------|------|
| Cabinet Components | |
| ♦ Exploded View | 1 |
| ♦ Usage List | 2 |
| Cabinet Components | |
| ♦ Exploded View | 3 |
| ♦ Usage List | 4 |
| Functional Components | |
| ♦ Exploded View | 5 |
| ♦ Usage List | 6 |
| Control Panel | |
| ♦ Exploded View | 7 |
| ♦ Usage List | 8 |



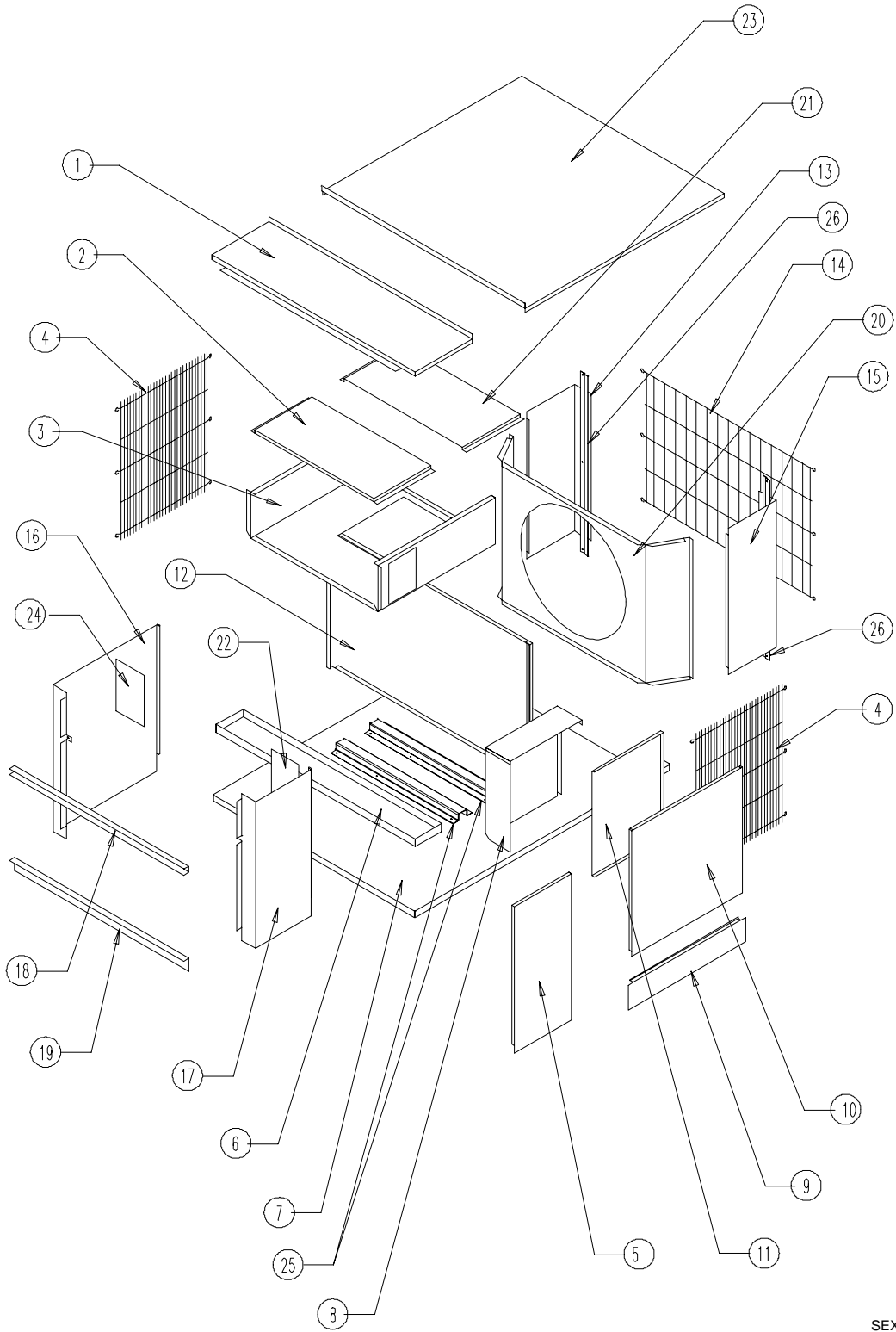
CLIMATE CONTROL SOLUTIONS

BARD MANUFACTURING COMPANY
Bryan, Ohio 43506

Since 1914...Moving ahead, just as planned.

Manual: 2110-211C
Supersedes: 2110-211B
File: Vol II Tab 10
Date: 09-25-02

CABINET COMPONENTS

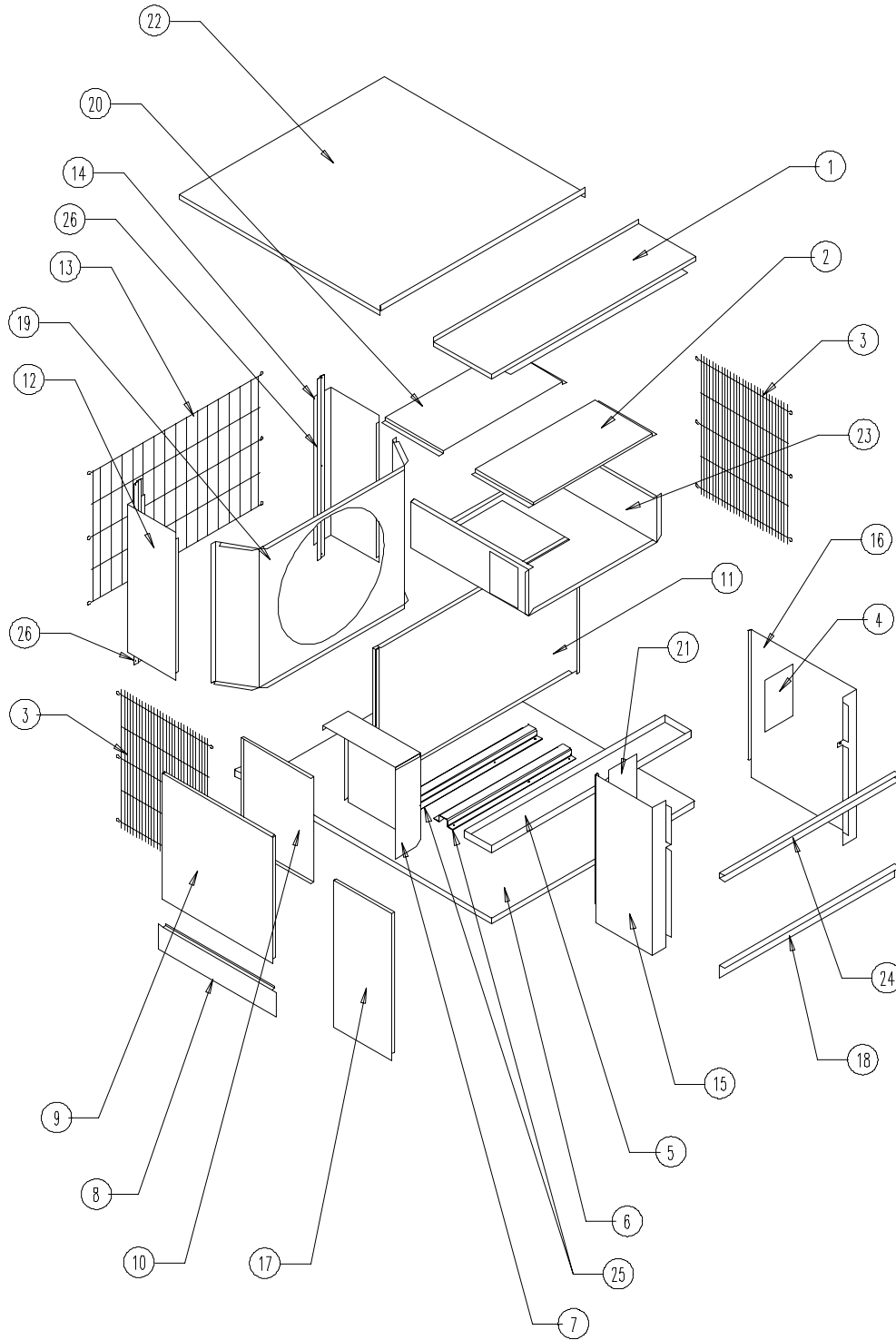


SEXP-288

FUNCTIONAL and CABINET COMPONENTS

| Drawing No. | Part No. | Description | P60A7 | |
|----------------|---------------|---|-------|--|
| 1 | 507-215-1 | Top – Front | X | |
| 2 | 134-117 | Heat Strip Shield | X | |
| 3 | 520-326 | Blower Partition | X | |
| 4 | 7051-007 | Side Grille | 2 | |
| 5 | 501-357-1 | Right Side | X | |
| 6 | 123-100 | Drain Pan | X | |
| 7 | 527-295-1 | Base | X | |
| 8 | Control Panel | See Control Panel Drawing and Parts Lists | X | |
| 9 | 537-407-1 | Bottom Fill Panel | X | |
| 10 | 553-314-1 | Service Door Assembly | X | |
| 11 | 132Y154 | Control Panel Cover | X | |
| 12 | 521-327-1 | Compressor Partition | X | |
| 13 | 149-089-1 | Left Rear Corner | X | |
| 14 | 7051-005 | Condenser Grille | X | |
| 15 | 149-090-1 | Right Rear Corner | X | |
| 16 | 549-091-1 | Left Front Corner | X | |
| 17 | 549-092-1 | Right Front Corner | X | |
| 18 | 163-561-1 | Plenum Channel | X | |
| 19 | 105-1030-1 | Plenum Angle | X | |
| 20 | 125-010-1 | Fan Shroud | X | |
| 21 | 134-118 | Heat Strip Shield | X | |
| 22 | 136-406 | Left Side Fill | X | |
| 23 | 506-216-1 | Top Assembly Back | X | |
| 24 | 136-405 | Right Side Fill | X | |
| 25 | 164-554 | Blower Mounting Angle | 2 | |
| 26 | 102-428 | Corner Offset | 2 | |

CABINET COMPONENTS

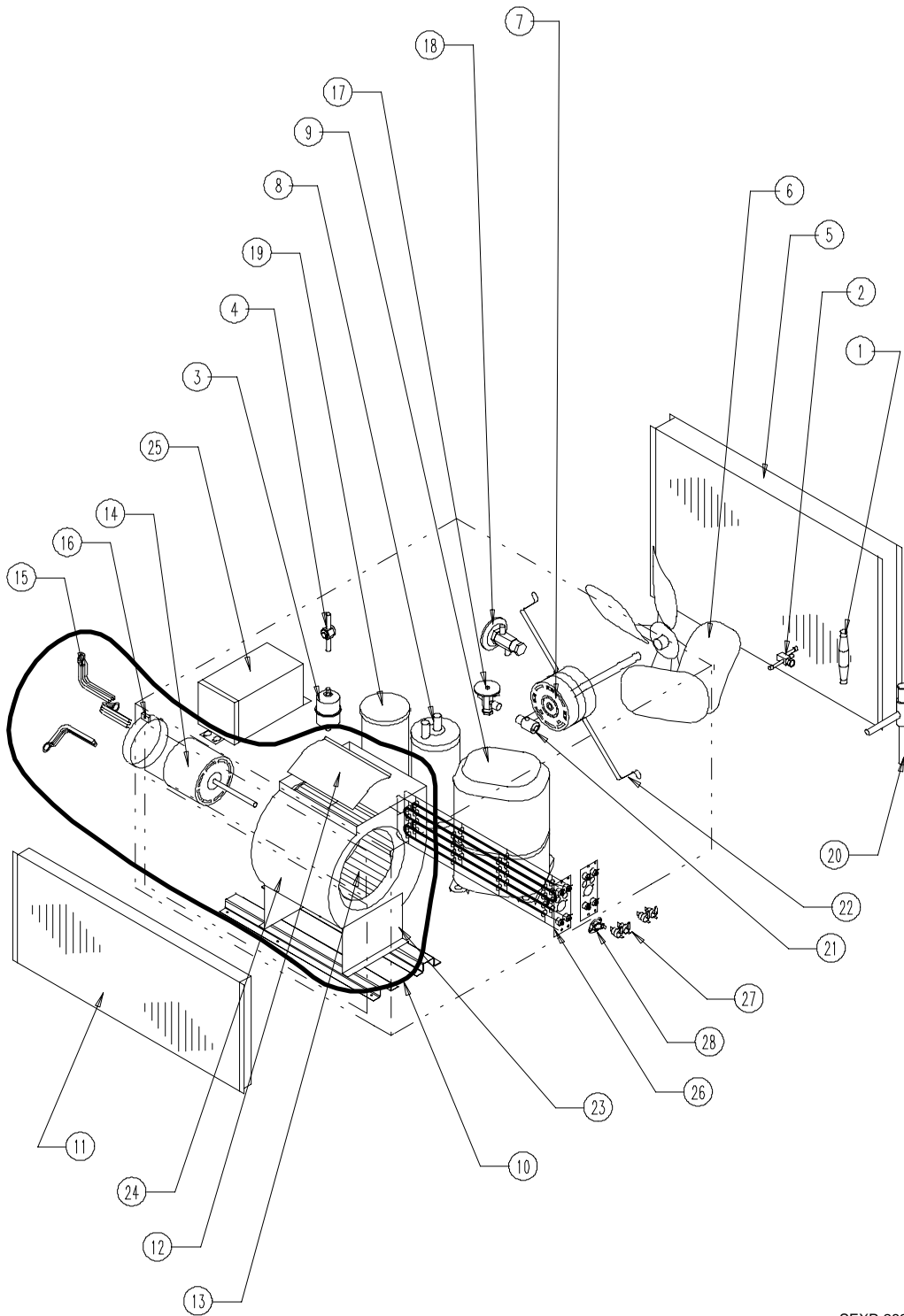


SEXP-287

CABINET COMPONENTS

| Drawing No. | Part No. | Description | P72A2 | |
|----------------|---------------|---|-------|--|
| 1 | 507-215-1 | Top – Front | X | |
| 2 | 134-117 | Heat Strip Shield | X | |
| 3 | 7051-007 | Side Grille | 2 | |
| 4 | 136-406 | Side Fill | X | |
| 5 | 123-100 | Drain Pan | X | |
| 6 | 527-295-1 | Base | X | |
| 7 | Control Panel | See Control Panel Drawing and Parts Lists | X | |
| 8 | 537-407-1 | Bottom Fill Panel | X | |
| 9 | 553-314-1 | Service Door Assembly | X | |
| 10 | 132X154 | Control Panel Cover | X | |
| 11 | 521-324-1 | Compressor Partition | X | |
| 12 | 149-089-1 | Left Rear Corner | X | |
| 13 | 7051-005 | Condenser Grille | X | |
| 14 | 149-090-1 | Right Rear Corner | X | |
| 15 | 549-087-1 | Left Front Corner | X | |
| 16 | 549-088-1 | Right Front Corner | X | |
| 17 | 501-356-1 | Left Side | X | |
| 18 | 105-1030-1 | Plenum Angle | X | |
| 19 | 125-010-1 | Fan Shroud | X | |
| 20 | 134-118 | Heat Shield | X | |
| 21 | 136-405 | Right Side Fill | X | |
| 22 | 506-216-1 | Top Back | X | |
| 23 | 520-325 | Blower Partition | X | |
| 24 | 165-561-1 | Plenum Channel | X | |
| 25 | 164-553 | Blower Mounting Angle | 2 | |
| 26 | 102-428 | Corner Offset | 2 | |

FUNCTIONAL COMPONENTS

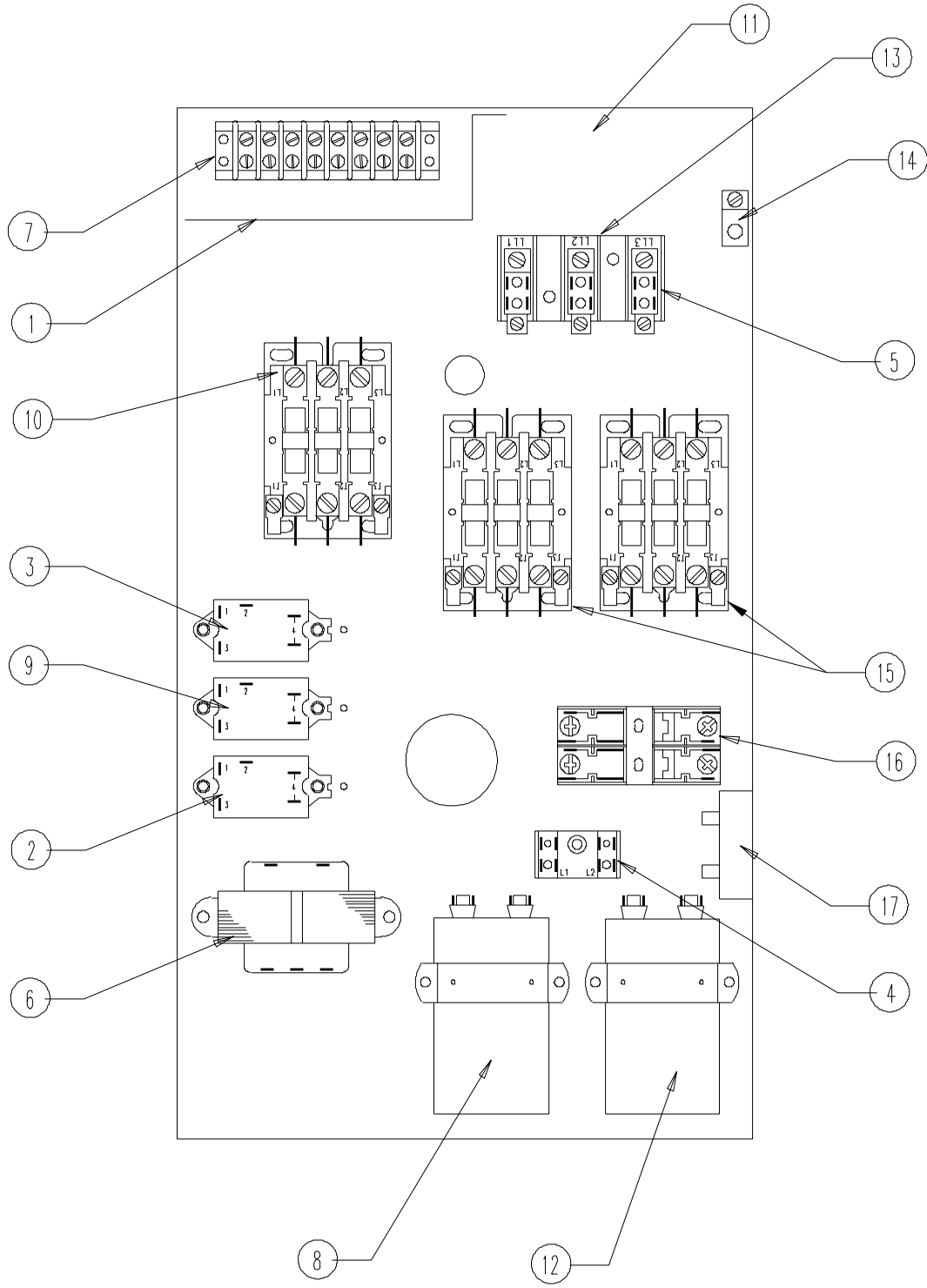


SEXP-289

FUNCTIONAL COMPONENTS

| Drawing No. | Part No. | Description | P60A7-C18H | P72A2-C18H | P72A2-F14H |
|----------------|----------|-----------------------------|------------|------------|------------|
| 1 | 5651-016 | Pressure Differential Valve | X | X | X |
| 2 | 5651-051 | Shutoff Valve | X | X | X |
| 3 | 5201-002 | Filter Drier | X | X | X |
| 4 | 5201-014 | Sight Glass | X | X | X |
| 5 | 5051-028 | Condenser Coil | X | X | X |
| 6 | 5151-026 | Fan Blade | | | X |
| 6 | 5151-030 | Fan Blade | X | X | |
| 7 | 8106-016 | Motor | X | X | |
| 7 | 8105-014 | Motor | | | X |
| 8 | 5202-018 | Accumulator | X | X | X |
| 9 | 8000-048 | Compressor | X | | |
| 9 | 8000-124 | Compressor | | X | X |
| 10 | S900-168 | Compressor Blower Assembly | X | X | X |
| 11 | 5060-056 | Evaporator Coil | | X | X |
| 11 | 5060-025 | Evaporator Coil | X | | |
| 12 | 144-130 | Blower Diffuser | X | X | X |
| 13 | 5152-088 | Blower Wheel | X | X | X |
| 14 | 8108-002 | Motor | X | X | X |
| 15 | 8200-034 | Motor Mount Arm | 3 | 3 | 3 |
| 16 | 8200-033 | Motor Mount Band | X | X | X |
| 17 | 5651-040 | Expansion Valve | X | | |
| 17 | 5651-082 | Expansion Valve | | X | X |
| 18 | 5651-014 | Bypass Valve | X | X | X |
| 19 | 5203-006 | Receiver | X | X | X |
| 20 | 5651-015 | Head Pressure Control Valve | X | X | X |
| 21 | 5651-081 | Distributor | | X | X |
| 21 | 5651-008 | Distributor | X | | |
| 22 | 8200-004 | Fan Motor Mount | X | X | X |
| 23 | 104-959 | Blower Leg | 2 | 2 | 2 |
| 24 | 151-108 | Blower Housing | X | X | X |
| 25 | 8407-005 | Transformer 460V | X | X | |
| 25 | 8407-049 | Transformer 415V | | | X |
| 26 | 8604-101 | Heat Strip | 2 | 2 | 2 |
| 27 | 8402-095 | One Shot Limit | 4 | 4 | 4 |
| 28 | 8402-113 | Limit | X | X | X |

CONTROL PANEL



SEXP-153

CONTROL PANEL

| Drawing No. | Part No. | Description | P60A7-C18H | P72A2-C18H | P72A2-F14H |
|----------------|----------|-------------------------|------------|------------|------------|
| 1 | 116X128 | Low Voltage Box | | X | X |
| 1 | 116Y128 | Low Voltage Box | X | | |
| 2 | 8201-008 | Fan Relay | X | X | X |
| 3 | 8201-008 | Interlock Relay | X | X | X |
| 4 | 8607-017 | Terminal Block | X | X | X |
| 5 | 8607-014 | Terminal Block | X | X | X |
| 6 | 8407-035 | Transformer | X | X | X |
| 7 | 8607-006 | Terminal Strip | X | X | X |
| 8 | 8552-026 | Capacitor 15/370 Blower | X | X | X |
| 9 | 8201-008 | Blower Relay | X | X | X |
| 10 | 8401-002 | Contactors | X | X | X |
| 11 | 516Y127 | Control Panel | X | | |
| 11 | 516X127 | Control Panel | | X | X |
| 12 | 8552-005 | Fan Capacitor 10/370 | X | X | X |
| 13 | 8607-015 | Phenolic Insulator | X | X | X |
| 14 | 8611-006 | Ground Terminal | X | X | X |
| 15 | 8401-002 | Heat Contactors | 2 | 2 | 2 |
| 16 | 8614-041 | Fuse Block | X | X | X |
| 17 | 8201-067 | Time Delay Relay | X | X | X |
| NS | 4064-316 | Wiring Diagram | X | | |
| NS | 4064-317 | Wiring Diagram | | X | X |