

REPLACEMENT PARTS MANUAL

WALL MOUNTED PACKAGE AIR CONDITIONER MODELS **MAC30A, MAC36A**

Manual 2110-408

Revision C

Date 02-20-91

Supersedes 10-08-90

* GENERAL NOTES *

*Revised and/or additional pages may be issued from time to time.

*A complete and current manual consists of pages dated as shown in the following index.

** INDEX **

<u>Page Description</u>	<u>Page</u>	<u>Date</u>	<u>Supersedes</u>
Cabinet Components--Exploded View	1	7-11-89	
" "--Usage List	2	10-08-90	7-11-89
Functional Components--Exploded View	3	7-11-89	
" "--Usage List	4	2-20-91	10-08-90
Control Panel--Layout	5	7-11-89	
" "--Usage List	6	2-20-91	1-25-90
Blower Assembly--Exploded View	7	Z-20-91	7-11-89
" "--Usage List	8	Z-20-91	10-08-90

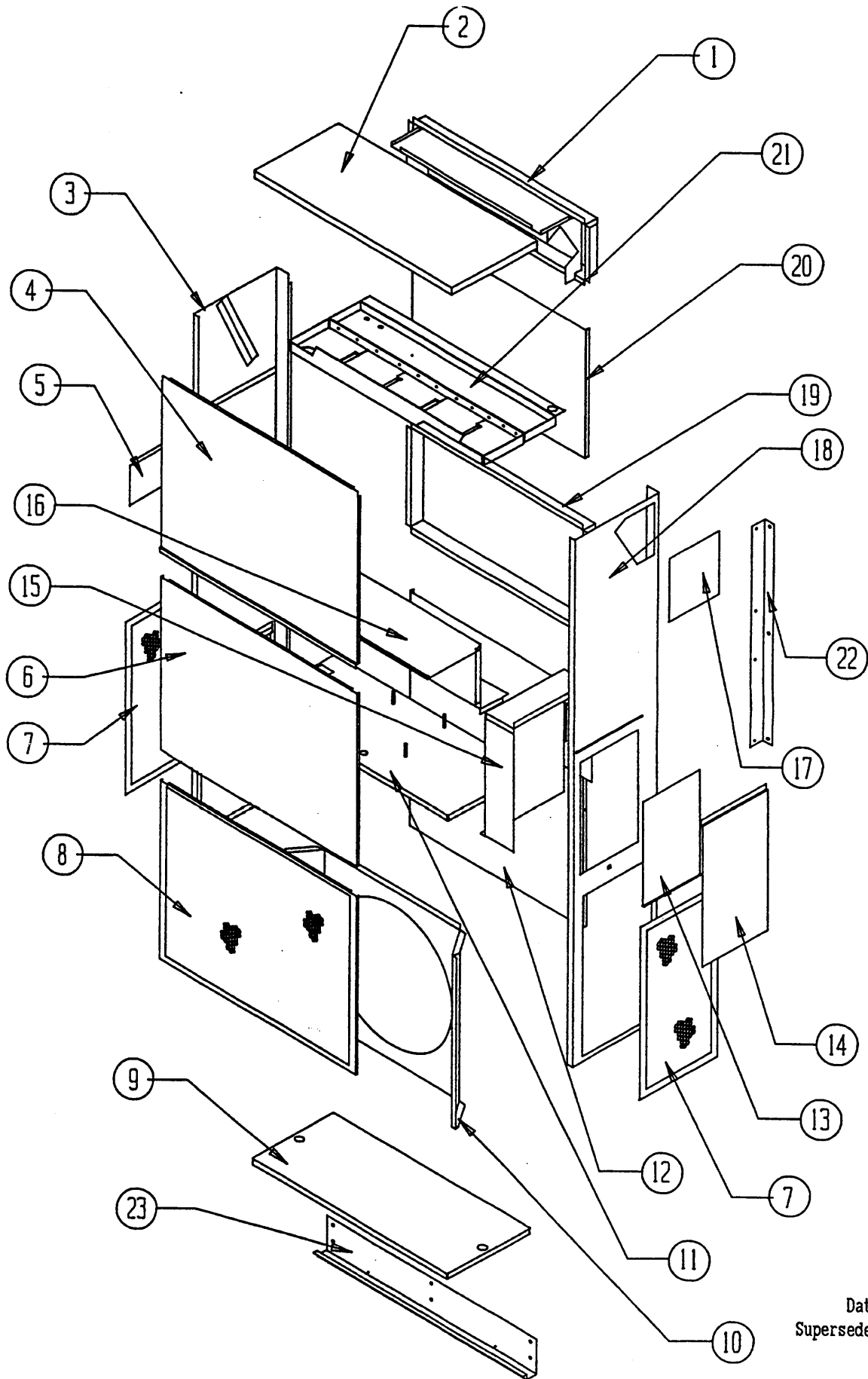
*** IMPORTANT ***

Contact the installing and/or local Bard distributor for all parts requirements. Make sure you have the complete model and serial number available from the unit rating plate.

BARDMANUFACTURINGCOMPANY

BRYAN, OHIO 43506

CABINET COMPONENTS



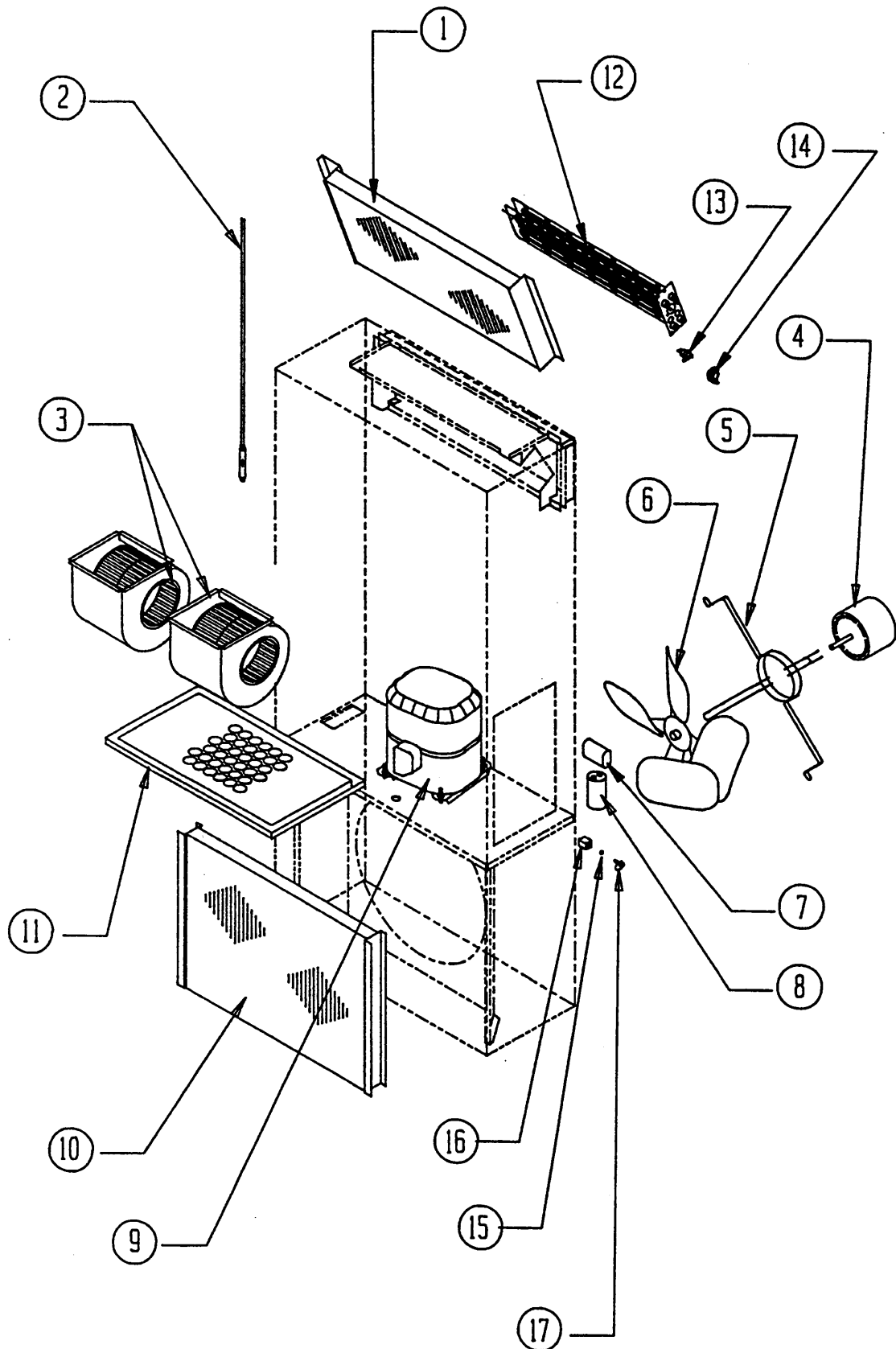
Date: 7-11-89
Supersedes:

CABINET COMPONENTS

Item No.	Part No.	Description	U S A G E
1	111-026	Outlet Air Frame Weld Assembly	x
2	506-096	Top Assembly	x
3	501-167	Left Side Assembly	x
4	514-058	Upper Front Assembly	x
5	142-023	Cover Plate--Fresh Air	x
6	514-057	Lower Front Assembly	x
7	119-023	Side Condenser Grille	2
8	119-024	Front Condenser Grille	x
9	126-001	Lower Base	x
10	124-014	Fan Shroud	x
11	127-122	Compressor Base Weld Assembly	x
12	108-057	Lower Back	x
13		Control Panel Cover (See control panel drawing & parts list)	x
14	132-071	Outside Control Panel Cover	x
15		Control Panel Assembly (See control panel drawing & parts list)	x
16	520-095	Compressor Partition Assembly	x
17	542-001	Side Cover Plate Assembly	x
18	501-166	Right Side Assembly	x
19	111-027	Inlet Air Frame	x
20	508-064	Upper Back Assembly	x
21	121-094	Water Pan/Blower Partition	x
22	112-002	Side Mounting Bracket	2
23	112-001	Bottom Mounting Bracket	x

Date: 10-08-90
Supersedes: 7-11-89

FUNCTIONAL COMPONENTS



Date: 7-11-89
Supersedes:

FUNCTIONAL COMPONENTS

Item No.	Part No.	Description	M A C 3 0 A	M A C 3 0 A	M A C 3 0 A	M A C 3 0 A	M A C 3 0 A	M A C 3 0 A	M A C 3 0 A	M A C 3 0 A	M A C 3 0 A	M A C 3 0 A	M A C 3 0 A	M A C 3 0 A	M A C 3 0 A	M A C 3 0 A	M A C 3 0 A	M A C 3 0 A	M A C 3 0 A
1	5060-048	Evaporator Coil	x	x	x	x	x	x	x	x	x	x	x	x	x	x	x	x	x
2	800-0076	Capillary Tube Assembly	x	x	x	x	x	x	x	x	x	x	x	x	x	x	x	x	x
2	800-0077	Capillary Tube Assembly									x	x	x	x	x	x	x	x	x
3	900-059	Blower Assembly	A	A	A	A*	A	A	A	A*	A	A	A	A*	A	A	A	A	A*
3	900-163	Blower Assembly (Single Speed)	B	B	B	B	B	B	B	B	B	B	B	B	B	B	B	B	B
4	8103-019	Motor--Condenser	x	x	x	x	x	x	x	x	x	x	x	x	x	x	x	x	x
5	8200-001	Motor Mount--Fan	x	x	x	x	x	x	x	x	x	x	x	x	x	x	x	x	x
6	5151-032	Fan Blade	x	x	x	x	x	x	x	x	x	x	x	x	x	x	x	x	x
7	8552-002	Capacitor 5/370V	A	A	A	A	A	A	A	A	A	A	A	A	A	A	A	A	A
8	8552-028	Capacitor									A	A	A	A	A	A	A	A	A
8	8552-035	Capacitor 40/370V	A	A	A	A	A	A	A	A									
8	8552-048	Capacitor 35/5-370V	B	B	B	B	B	B	B	B									
8	8552-049	Capacitor 35/5-440V									B	B	B	B	B	B	B	B	B
9	8000-087	Compressor H23A383ABCA									C	C	C	C	C	C	C	C	C
9	8000-092	Compressor H23A303ABCA	A	A	A	A	A	A	A	A									
9	8000-099	Compressor H23B283ABCA	B	B	B	B	B	B	B	B									
10	5051-048	Condenser Coil	x	x	x	x	x	x	x	x	x	x	x	x	x	x	x	x	x
11	7004-006	Filter 14x25x1	x	x	x	x	x	x	x	x	x	x	x	x	x	x	x	x	x
12	8604-047	Heat Strip 15KW				1				1				1					1
12	8604-089	Heat Strip 5KW		1					1				1				1		
12	8604-091	Heat Strip 10KW			1				1				1				1		
13	8402-030	Thermal Cutoff		1	2	3			1	2	3		1	2	3		1	2	3
14	8402-049	Limit Control		x	x	x			x	x	x		x	x	x		x	x	x
15	1171-024	Retainer Clip	x	x	x	x	x	x	x	x	x	x	x	x	x	x	x	x	x
17	1171-022	1/4 Turn Fastener	x	x	x	x	x	x	x	x	x	x	x	x	x	x	x	x	x
16	1171-023	Receptacle	x	x	x	x	x	x	x	x	x	x	x	x	x	x	x	x	x

*900-059 blower assembly must be operated on high speed only.

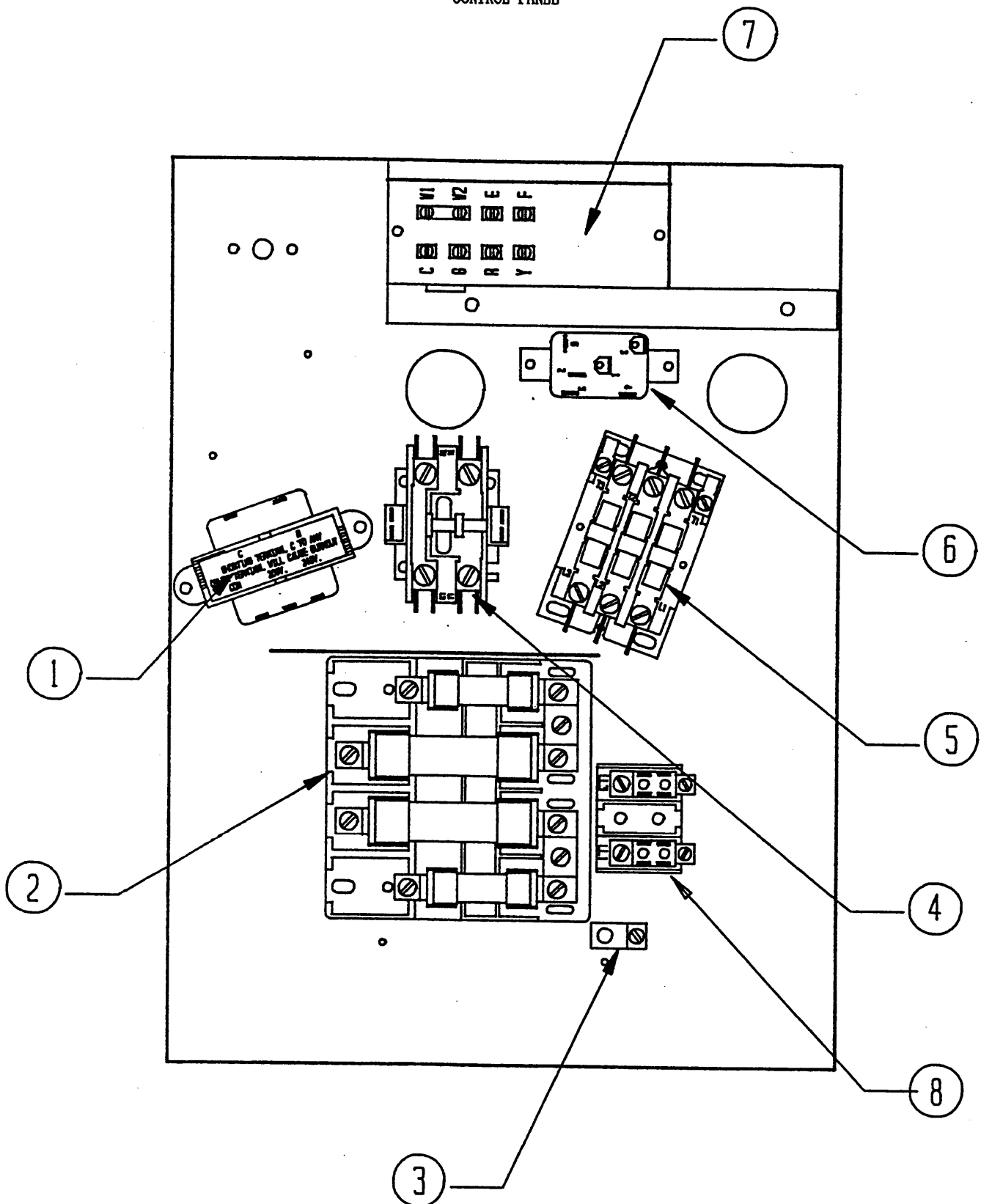
NOTES: (A) Used on units produced before date code N90.

(B) Used on units produced with date code N90 and subsequent units.

(C) Used on units produced with date code C91 and subsequent units.

Date: 2-20-91
Supersedes: 10-08-90

CONTROL PANEL



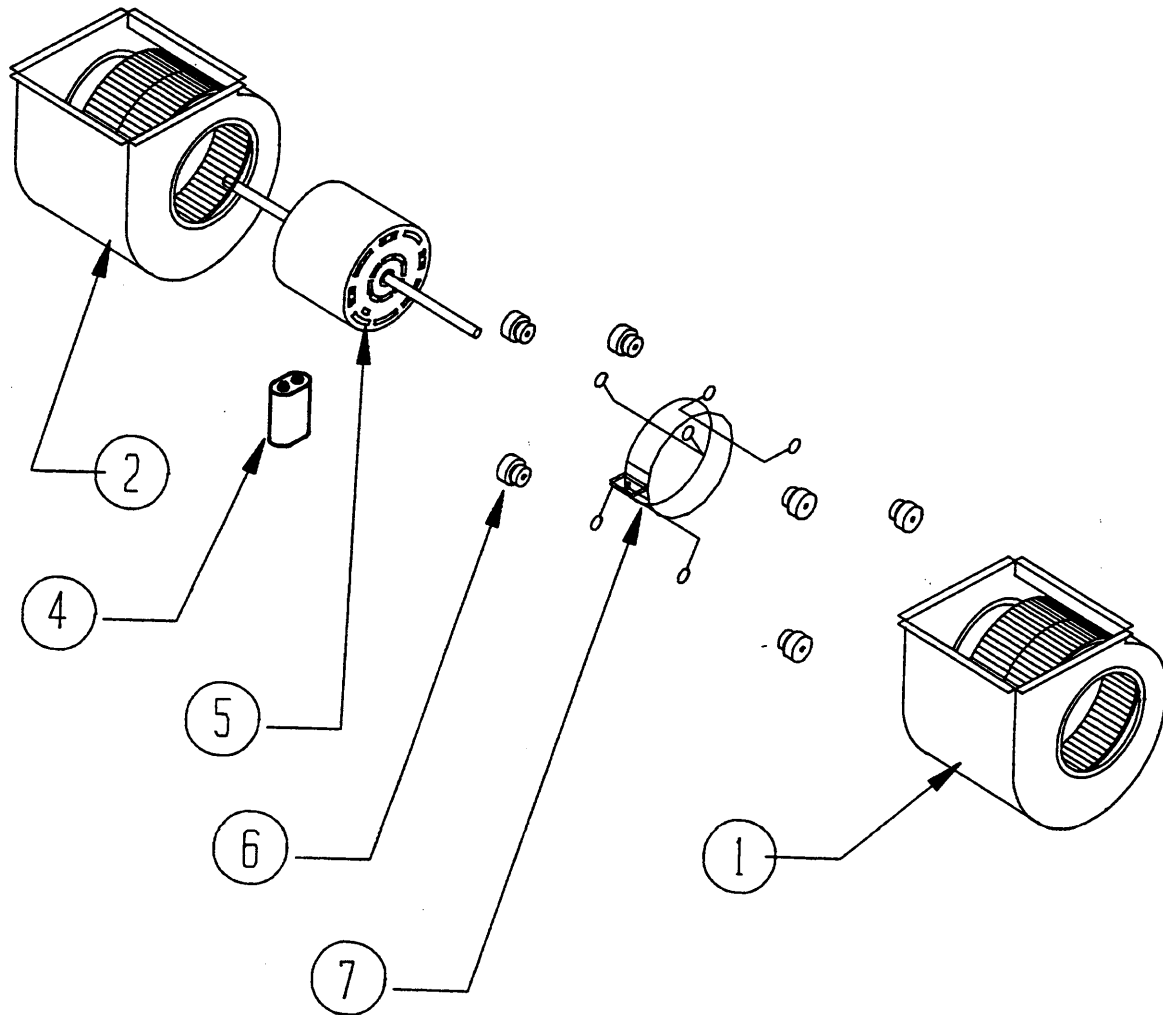
Date: 7-11-89
Supersedes:

CONTROL PANEL

Item No.	Part No.	Description	M A C 3 0 A	M A C 3 0 A	M A C 3 0 A	M A C 3 0 A	M A C 3 0 A	M A C 3 0 A	M A C 3 0 A	M A C 3 0 A	M A C 3 0 A	M A C 3 0 A	M A C 3 0 A	M A C 3 0 A	M A C 3 0 A	M A C 3 0 A	M A C 3 0 A	M A C 3 0 A	M A C 3 0 A
1	8407-034	Transformer	x	x	x	x	x	x	x	x	x	x	x	x	x	x	x	x	x
2	8615-013	Circuit Breaker								x									x
2	8615-014	Circuit Breaker					x	x											
2	8615-015	Circuit Breaker													x	x			
2	8615-016	Circuit Breaker								x	x						x	x	
2	8614-017	Fuse Block 15KW				x								x					
3	8611-006	Ground Terminal	x	x	x	x	x	x	x	x	x	x	x	x	x	x	x	x	x
4	8401-007	Contactor (Compressor)	x	x	x	x	x	x	x	x	x	x	x	x	x	x	x	x	x
5	8401-002	Contactor (Heat)				x				x				x					x
5	8401-006	Contactor (Heat)		x	x			x	x				x	x			x	x	
6	8201-009	Relay--Blower	x	x	x	x	x	x	x	x	x	x	x	x	x	x	x	x	x
7	8607-018	Low Voltage Terminal Board	x	x	x	x	x	x	x	x	x	x	x	x	x	x	x	x	x
8	8607-013	Terminal Block		x	x					x			x	x					x
	4081-112	Wiring Diagram	x									x							
	4081-113	Wiring Diagram					x								x				
	4081-122	Wiring Diagram		x									x						
	4081-123	Wiring Diagram						x								x			
	4081-134	Wiring Diagram			x									x					
	4081-135	Wiring Diagram							x								x		
	4081-143	Wiring Diagram				x								x					
	4081-144	Wiring Diagram								x									x
	132-072	Control Panel Cover	x	x	x							x	x	x					
	132-097	Control Panel Cover					x	x	x	x						x	x	x	x
	133-075	Control Panel Cover				x									x				

Date: 2-20-91
Supersedes: 1-25-90

BLOWER ASSEMBLY



Date: 2-20-91
Supersedes: 7-11-89

BLOWER ASSEMBLY

Dwg. No.	Part No.	Description	9	9
			0	0
			0	0
			-	-
			0	1
			5	6
			9	3
1	5152-062	Blower Wheel CW and Housing	x	x
2	5152-063	Blower Wheel CCW and Housing	x	x
4	8552-004	Capacitor 7-1/2 / 370V	x	x
5	8106-022	Motor--Evaporator (Two Speed)	x	
5	8106-026	Motor--Evaporator (Single Speed)		x
6	5451-011	Grommet	6	6
7	8200-032	Motor Mount--Blower	x	x

*900-059 blower assembly must be operated on high speed only for all 15KW units.

Date: 2-20-91
Supersedes: 10-08-90

2110-408
Page 8