

REPLACEMENT PARTS MANUAL

WALL MOUNTED PACKAGE AIR CONDITIONER MODELS **MAC30A, MAC36A**

Manual 2110-408

Revision --

Date **7-11-89**

Supersedes

* GENERAL NOTES *

*Revised and/or additional pages may be issued **from** time to time.

*A complete and current manual consists of pages dated as shown in the following index.

** INDEX **

<u>Page</u>	<u>Description</u>	<u>Page</u>	<u>Date</u>	<u>Supersedes</u>
	Cabinet Components-Exploded View	1	7-11-89	
"	--Usage List	2	7-11-89	
	Functional Components--Exploded View	3	7-11-89	
"	--Usage List	4	7-11-89	
	Control Panel--Layout	5	7-11-89	
"	--Usage List	6	7-11-89	
	Blower Assembly--Exploded View	7	7-11-89	
"	--Usage List	8	7-11-89	

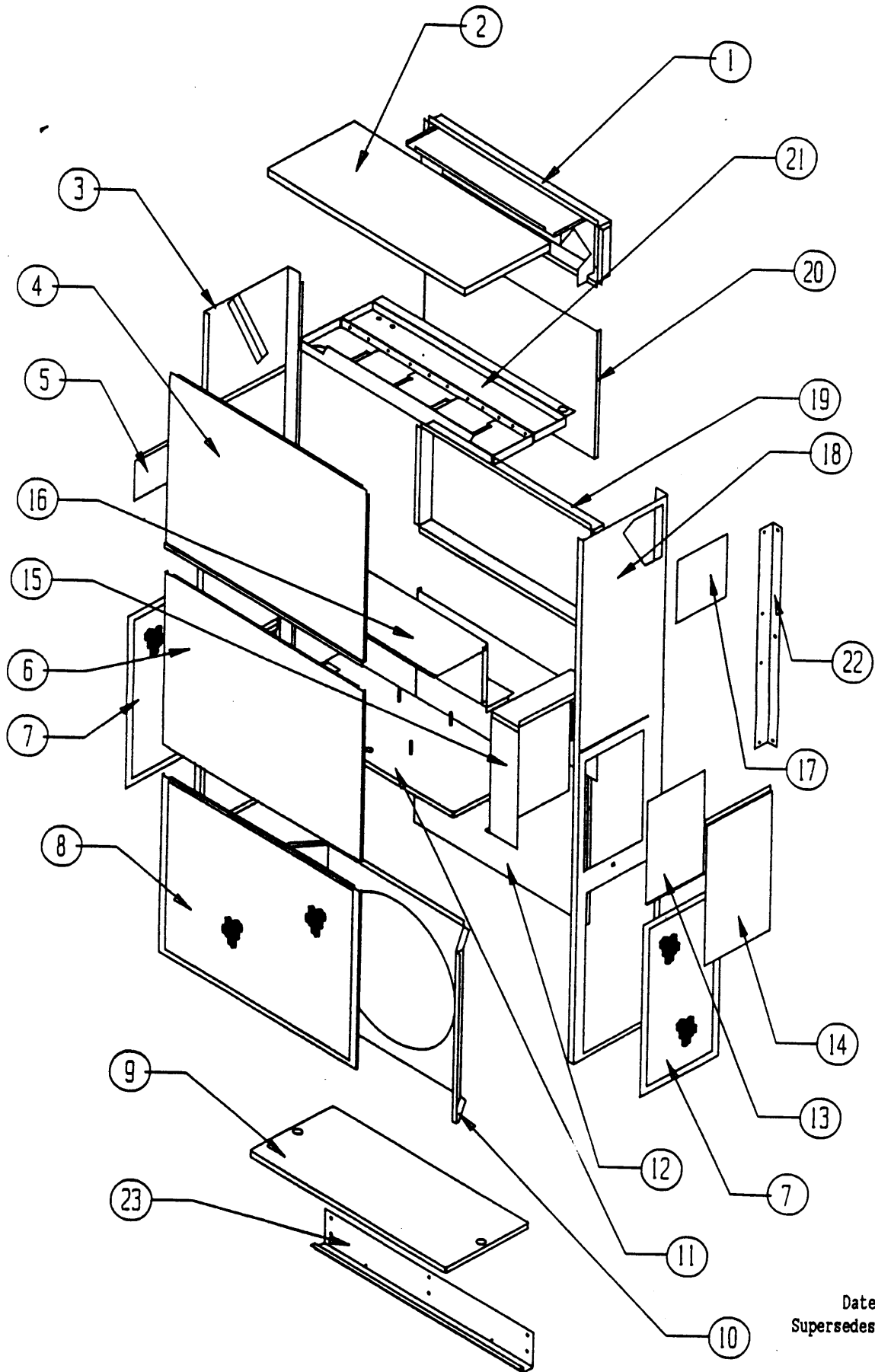
*** IMPORTANT ***

Contact the installing and/or local Bard distributor for all parts requirements. Make sure you have the complete model and serial number available **from** the unit rating plate.

BARD MANUFACTURING COMPANY

BRYAN, OHIO 43506

CABINET COMPONENTS



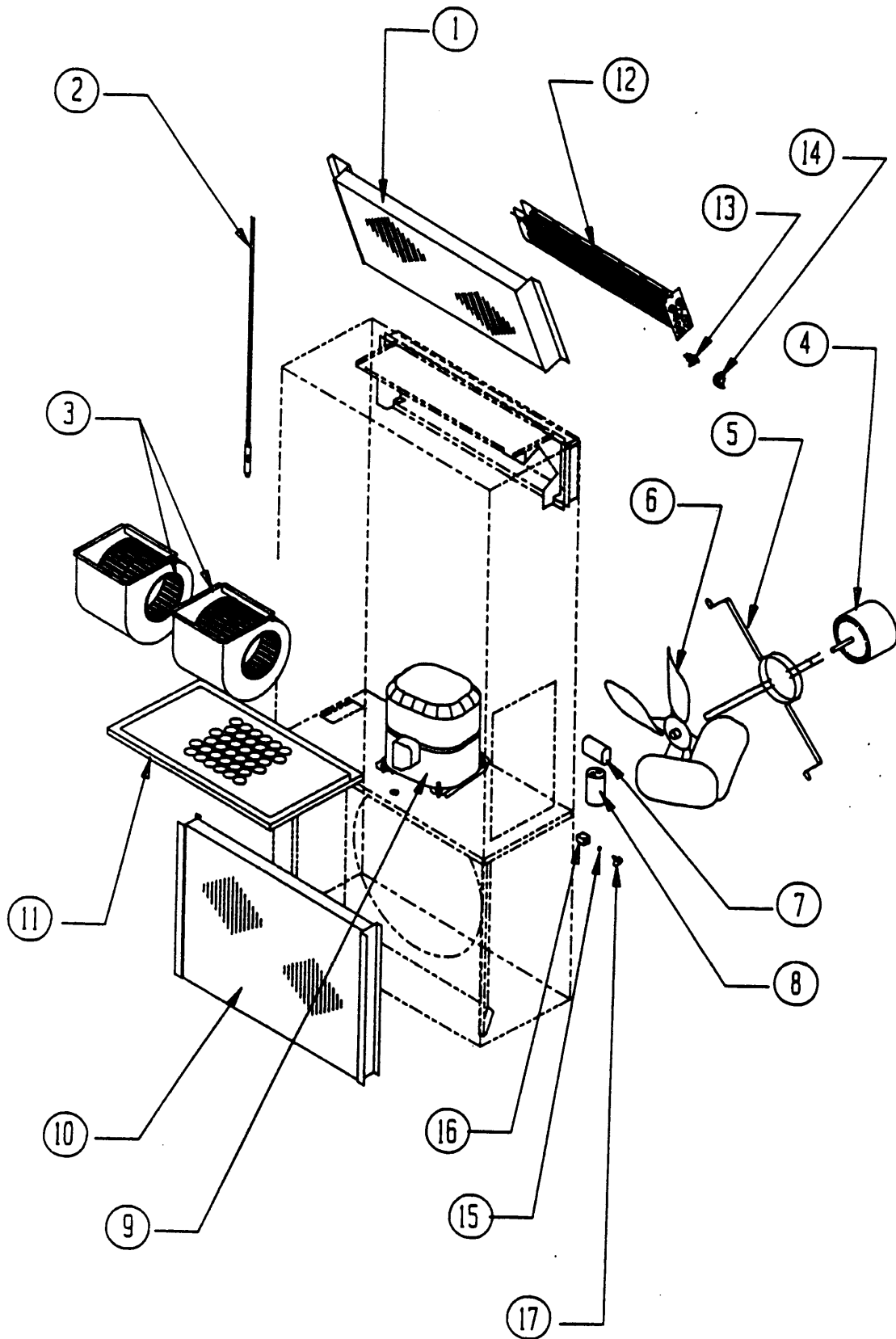
Date: 7-11-89
Supersedes:

CABINET COMPONENTS

Item No.	Part No.	Description	U S A G E
1	111-021	Outlet Air Frame Weld Assembly	X
2	506-096	Top Assembly	X
3	501-167	Left Side Assembly	X
4	514-058	Upper Front Assembly	X
5	142-023	Cover Plate--Fresh Air	X
6	514-057	Lower Front Assembly	X
7	118-019	Side Condenser Grille	2
8	118-018	Front Condenser Grille	X
9	126-001	Lower Base	X
10	124-014	Fan Shroud	X
11	127-122	Compressor Base Weld Assembly	X
12	108-057	Lower Back	X
13		Control Panel Cover (See control panel drawing & parts list)	X
14	132-071	Outside Control Panel Cover	X
15		Control Panel Assembly (See control panel drawing & parts list)	X
16	520-095	Compressor Partition Assembly	X
17	542-001	Side Cover Plate Assembly	X
18	501-166	Right Side Assembly	X
19	111-018	Inlet Air Frame	X
20	508-064	Upper Back Assembly	X
21	121-094	Water Pan/Blower Partition	X
22	112-002	Side Mounting Bracket	2
23	112-001	Bottom Mounting Bracket	X

Date: 7-11-89
Supersedes:

FUNCTIONAL COMPONENTS



Date: 7-11-89
Supersedes:

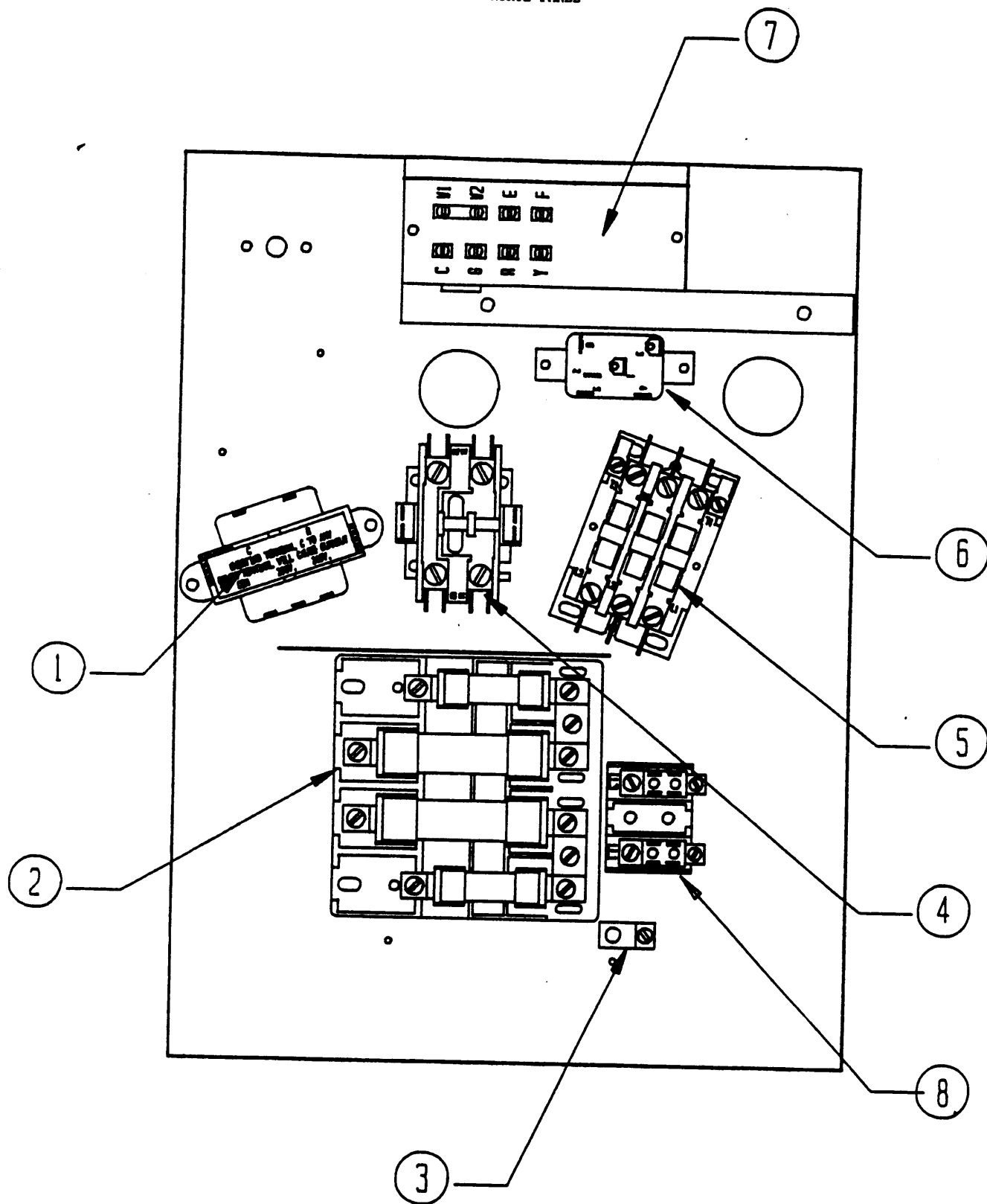
FUNCTIONAL COMPONENTS

Item No.	Part No.	Description	M A C 3 0 A	M A C 3 0 A	M A C 3 0 A	M A C 3 0 A	M A C 3 0 A	M A C 3 0 A	M A C 3 0 A	M A C 3 0 A	M A C 3 0 A	M A C 3 0 A	M A C 3 0 A	M A C 3 0 A	M A C 3 0 A	M A C 3 0 A	M A C 3 0 A	M A C 3 0 A	M A C 3 0 A
1	5060-048	Evaporator Coil	X	X	X	X	X	X	X	X	X	X	X	X	X	X	X	X	X
2	800-0076	Capillary Tube Assembly	X	X	X	X	X	X	X	X	X	X	X	X	X	X	X	X	X
2	800-0077	Capillary Tube Assembly	X	X	X	X	X	X	X	X	X	X	X	X	X	X	X	X	X
3	900-154	Blower Assembly (Complete)	X	X	X	X	X	X	X	X	X	X	X	X	X	X	X	X	X
3	900-154	Blower Assembly *	X	X	X	X	X	X	X	X	X	X	X	X	X	X	X	X	X
4	8103-019	Motor--Condenser	X	X	X	X	X	X	X	X	X	X	X	X	X	X	X	X	X
5	8200-001	Motor Mount--Fan	X	X	X	X	X	X	X	X	X	X	X	X	X	X	X	X	X
6	5151-032	Fan Blade	X	X	X	X	X	X	X	X	X	X	X	X	X	X	X	X	X
7	8552-002	Capacitor 5/370V	X	X	X	X	X	X	X	X	X	X	X	X	X	X	X	X	X
8	8552-028	Capacitor	X	X	X	X	X	X	X	X	X	X	X	X	X	X	X	X	X
8	8552-035	Capacitor 40/370V	X	X	X	X	X	X	X	X	X	X	X	X	X	X	X	X	X
9	8000-058	Compressor CRJ3-0300-PFV	X	X	X	X	X	X	X	X	X	X	X	X	X	X	X	X	X
9	8000-092	Compressor H23A303ABCA	X	X	X	X	X	X	X	X	X	X	X	X	X	X	X	X	X
10	5051-048	Condenser Coil	X	X	X	X	X	X	X	X	X	X	X	X	X	X	X	X	X
11	7004-006	Filter 14x25x1	X	X	X	X	X	X	X	X	X	X	X	X	X	X	X	X	X
12	8604-047	Heat Strip 15KW				1			1		1			1				1	
12	8604-089	Heat Strip 5KW		1				1			1					1			
12	8604-091	Heat Strip 10KW			1				1			1					1		
13	8402-030	Thermal Cutoff		1	2	3		1	2	3		1	2	3		1	2	3	
14	8402-049	Limit Control		X	X	X		X	X	X		X	X	X		X	X	X	
15	1171-024	Retainer Clip	X	X	X	X	X	X	X	X	X	X	X	X	X	X	X	X	X
17	1171-022	1/4 Turn Fastener	X	X	X	X	X	X	X	X	X	X	X	X	X	X	X	X	X
16	1171-023	Receptacle	X	X	X	X	X	X	X	X	X	X	X	X	X	X	X	X	X

*900-154 blower assembly must be operated on high speed only. The low speed motor lead has been cut off at the motor.

Date: 7-11-89
Supersedes:

CONTROL PANEL



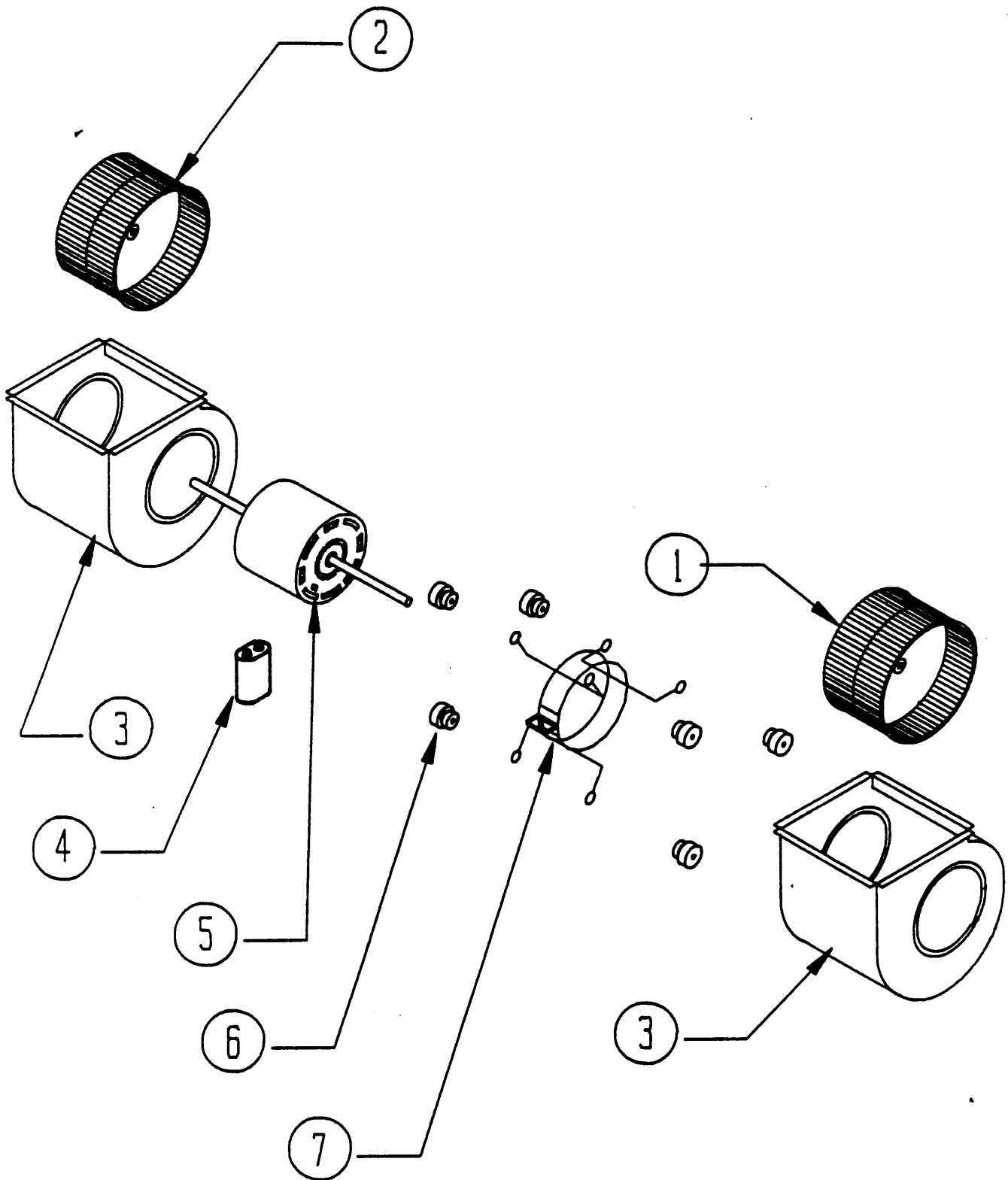
Date: 7-11-89
Supersedes:

CONTROL PANEL

Item No.	Part No.	Description	M A C 3 0 A	M A C 3 0 A	M A C 3 0 A	M A C 3 0 A	M A C 3 0 A	M A C 3 0 A	M A C 3 0 A	M A C 3 0 A	M A C 3 0 A	M A C 3 0 A	M A C 3 0 A	M A C 3 0 A	M A C 3 0 A	M A C 3 0 A	M A C 3 0 A	M A C 3 0 A	M A C 3 0 A
1	8407-034	Transformer	X	X	X	X	X	X	X	X	X	X	X	X	X	X	X	X	X
2	8615-013	Circuit Breaker																	
2	8615-014	Circuit Breaker																	
2	8615-015	Circuit Breaker																	
2	8615-016	Circuit Breaker																	
2	8614-017	Fuse Block 15KW																	
3	8611-006	Ground Terminal	X	X	X	X	X	X	X	X	X	X	X	X	X	X	X	X	X
4	8401-007	Contactor (Compressor)	X	X	X	X	X	X	X	X	X	X	X	X	X	X	X	X	X
5	8401-002	Contactor (Heat)																	
5	8401-006	Contactor (Heat)		X	X														
6	8201-009	Relay--Blower	X	X	X	X	X	X	X	X	X	X	X	X	X	X	X	X	X
7	8607-018	Low Voltage Terminal Board	X	X	X	X	X	X	X	X	X	X	X	X	X	X	X	X	X
8	8607-013	Terminal Block		X	X														
	4081-110	Wiring Diagram	X																
	4081-111	Wiring Diagram																	
	4081-120	Wiring Diagram		X															
	4081-121	Wiring Diagram																	
	4081-130	Wiring Diagram			X														
	4081-131	Wiring Diagram																	
	4081-140	Wiring Diagram				X													
	4081-141	Wiring Diagram																	
	132-072	Control Panel Cover	X	X	X														
	132-073	Control Panel Cover																	
	132-074	Control Panel Cover																	
	133-075	Control Panel Cover				X													

Date: 7-11-89
Supersedes:


BLOWER ASSEMBLY



Date: 7-11-89
Supersedes:

2110-408
Page 7

BLOWER ASSEMBLY

Dwg. No.	Part No.	Description	9	9
			0	0
			0	0
			-	
			1	1
			5	5
			3	4
1	5152-055	Blower Wheel CCW	x	x
2	5152-056	Blower Wheel CW	x	x
3	5152-054	Blower Housing	2	2
4	8552-004	Capacitor 7-1/2 / 370V	x	x
5	8106-022	Motor--Evaporator	x	x
6	5451-011	Grommet	6	6
7	8200-032	Motor Mount--Blower	x	x
8	5152-056	Blower Wheel CCW	x	x

*900-154 blower assembly must be operated on high speed only. The low speed motor lead has been cut off at the motor.

Date: 7-11-89
Supersedes: