
REPLACEMENT PARTS MANUAL

WALL MOUNTED PACKAGE AIR CONDITIONER

MODELS: WE301
WE371

General Notes

- Revised and/or additional pages may be issued from time to time.
- A complete and current manual consists of pages shown in the following contents section.

Important

- Contact the installing and/or local Bard distributor for all parts requirements. Make sure you have the complete model and serial number available from the unit rating plates.

Contents

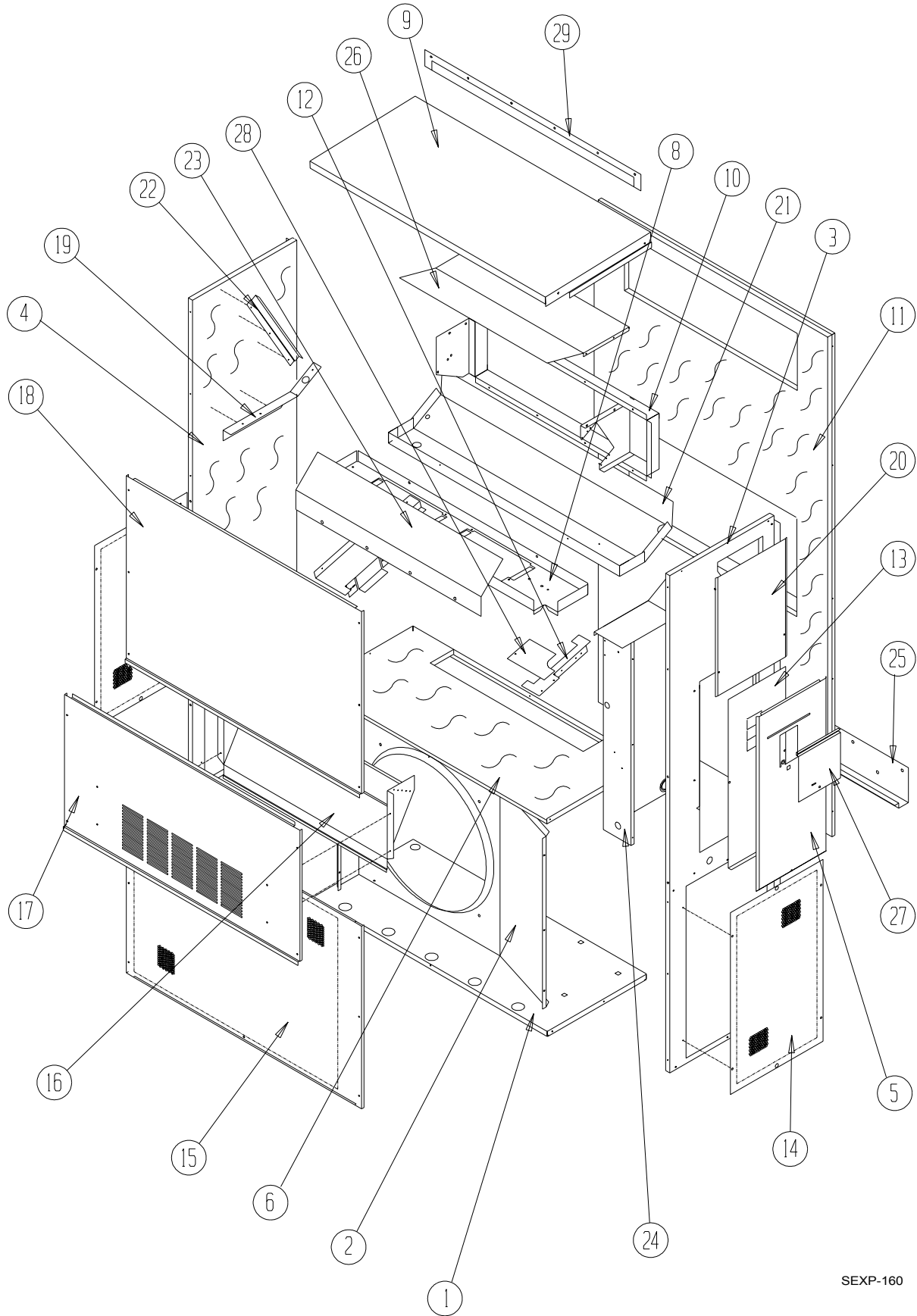
| Description | Page |
|-----------------------|------|
| Cabinet Components | |
| ♦ Exploded View | 1 |
| ♦ Usage List | 2 |
| Functional Components | |
| ♦ Exploded View | 3 |
| ♦ Usage List | 4 |
| Control Panel | |
| ♦ Exploded View | 5 |
| ♦ Usage List | 6 |
| Blower Assembly | |
| ♦ Exploded View | 7 |
| ♦ Usage List | 7 |



BARD MANUFACTURING COMPANY
Bryan, Ohio 43506
Since 1914...Moving ahead, just as planned.

Manual: 2110-449A
Supersedes: 2110-449
File: 2150-004 Tab 16
Date: 07-15-04

CABINET COMPONENTS



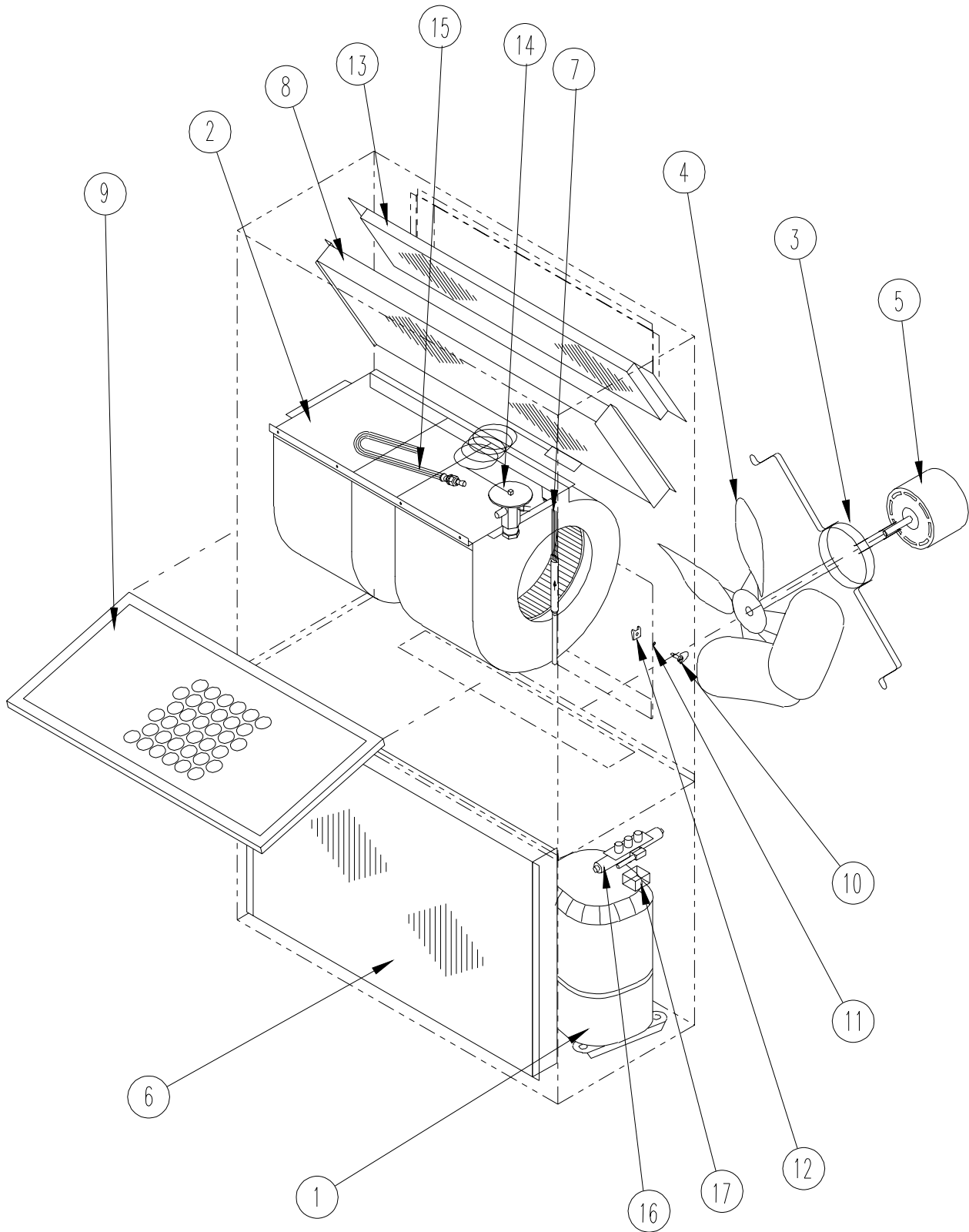
SEXP-160

CABINET COMPONENTS

| Drawing No. | Part No. | Description | WE301-D | WE301-F | WE371-D | WE371-F |
|-------------|------------------------|---|---------|---------|---------|---------|
| 1 | S127-199 | Lower Base | X | X | X | X |
| 2 | 125-022 | Fan Shroud | X | X | X | X |
| 3 | S500-228-* ① | Right Side | X | X | X | X |
| 4 | S500-229-* ① | Left Side | X | X | X | X |
| 5 | S553-109-* ① | Control Panel Cover (outer) | X | X | X | X |
| 6 | S520X181 | Condenser Partition | X | X | X | X |
| 8 | 121X182 | Blower Partition | X | X | X | X |
| 9 | S506-130-* ① | Top | X | X | X | X |
| 10 | S111X030 | Outlet Air Frame Assembly | X | X | X | X |
| 11 | S508-088 | Back | X | X | X | X |
| 12 | 113X195 | Filter Bracket | X | X | X | X |
| 13 | S132-104 | Control Panel Cover (Inner) | X | | X | |
| 13 | S132-110 | Control Panel Cover (Inner) | | X | | X |
| 14 | 118-056-* ① | Side Grille | 2 | 2 | 2 | 2 |
| 15 | 118-059-* ① | Condenser Grille | X | X | X | X |
| 16 | BFAD-3 | Fresh Air Damper Assembly | X | X | X | X |
| 17 | S552-206-* ① | Service Door | X | X | X | X |
| 18 | S514-072-* ① | Upper Front | X | X | X | X |
| 19 | 105X850 | Left Side Support | X | X | X | X |
| 20 | S143-034-* ① | Right Side Cover Plate (Outer) | X | X | X | X |
| 21 | S123-078 | Drain Pan | X | X | X | X |
| 22 | 147-044 | Evaporator Support | X | X | X | X |
| 23 | 135-124 | Air Baffle | X | X | X | X |
| 24 | Control Panel Assembly | See Control Panel Assembly Drawing and Parts List | X | X | X | X |
| 25 | 113-140 | Bottom Mounting Bracket | X | X | X | X |
| 26 | 135X123 | Heat Shield | X | X | X | X |
| 27 | S153-218-* ① | Disconnect Access Door | X | X | X | X |
| 28 | 137-259 | Fill Plate | X | X | X | X |
| 29 | 113-149-* ① | Top Rain Flashing | X | X | X | X |

① *NOTE: Exterior cabinet parts are manufactured with various paint color options. To insure that you receive the proper paint color, you must include the complete model and serial number of the unit for which cabinet parts are being ordered.*

FUNCTIONAL COMPONENTS



SEXP-162

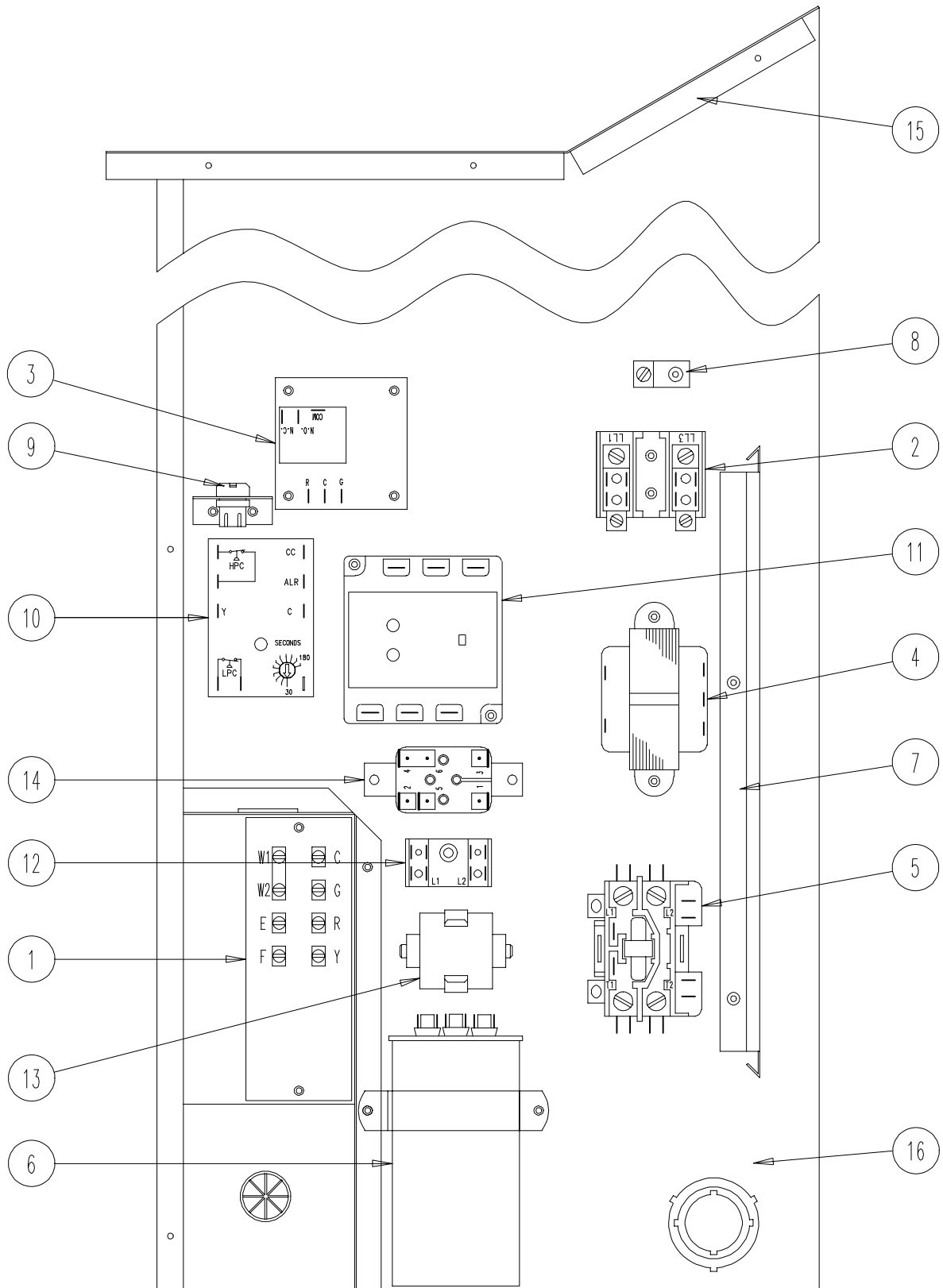
FUNCTIONAL COMPONENTS

| Drawing No. | Part No. | Description | WE301-D | WE301-F | WE371-D | WE371-F |
|-------------|-----------|-------------------------------|---------|---------|---------|---------|
| 1 | 8000-240 | Compressor | X | | | |
| 1 | 8000-241 | Compressor | | X | | |
| 1 | 8000-243 | Compressor | | | | X |
| 1 | 8000-242 | Compressor | | | X | |
| 2 | S900-231 | Blower Assembly | X | X | X | X |
| 3 | 8200-001 | Fan Motor Mount | X | X | X | X |
| 4 | 5151-045 | Fan Blade | X | X | X | X |
| 5 | 8103-013 | Condenser Motor | X | X | X | X |
| 6 | 5051-066 | Condenser Coil | | | X | X |
| 6 | 5051-068 | Condenser Coil | X | X | | |
| 7 | 800-0185 | Cooling Capillary Assembly | | | X | X |
| 7 | 800-0184 | Cooling Capillary Assembly | X | X | | |
| 8 | 5060-064 | Evaporator Coil | X | X | X | X |
| 9 | 7004-019 | Air Filter 1" Throw Away | X | X | X | X |
| 9 | 7003-031 | Air Filter 1" Washable ① | X | X | X | X |
| 9 | 7004-026 | Air Filter 2" Pleated ① | X | X | X | X |
| 10 | 1171-022 | 1/4 Turn Fastener | X | X | X | X |
| 11 | 1171-024 | 1/4 Turn Retainer | X | X | X | X |
| 12 | 1171-023 | 1/4 Receptacle | X | X | X | X |
| NS | 1804-0106 | High Pressure Switch (Flare) | X | X | X | X |
| NS | 1804-0107 | Low Pressure Switch (Flare) ① | X | X | X | X |
| NS | CMA6 | Low Ambient Control (Flare) ① | X | X | X | X |
| NS | 5201-001 | Liquid Line Filter Drier | X | X | X | X |

NS = Not Shown

① = Optional

CONTROL PANEL



SEXP-291

CONTROL PANEL

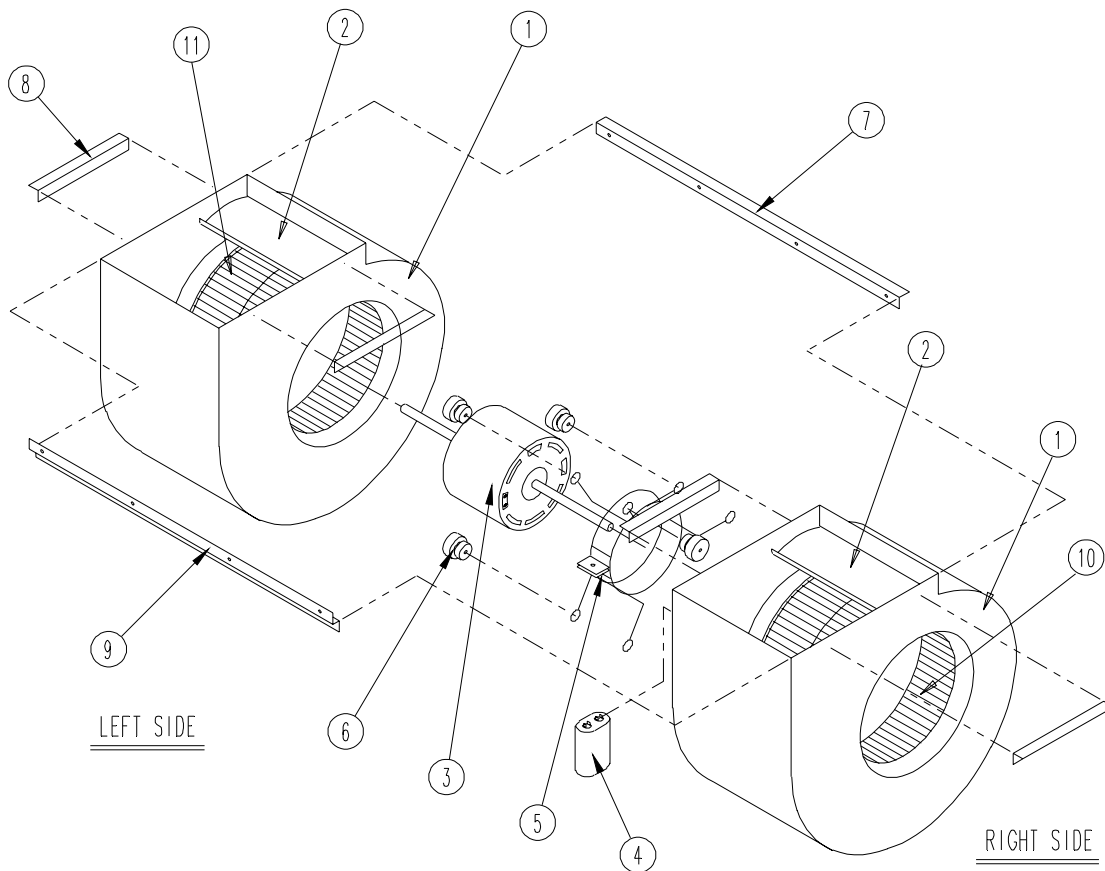
| Drawing No. | Part No. | Description | WE301-D | WE301-F | WE371-D | WE371-F |
|-------------|----------|-------------------------------|---------|---------|---------|---------|
| 1 | 8607-020 | Low Voltage Terminal Strip | X | X | X | X |
| 2 | 8607-013 | Terminal Block 2 Pole | | | X | 2 |
| 3 | 8201-056 | Blower Control | X | X | X | X |
| 4 | 8407-034 | Transformer | X | X | X | X |
| 5 | 8401-007 | Compressor Contactor | X | | X | |
| 5 | 8401-002 | Compressor Contactor | | X | | X |
| 6 | 8552-052 | Compressor Capacitor | X | | | |
| 6 | 8552-063 | Compressor Capacitor | | | X | |
| 6 | 8552-002 | Outdoor Motor Capacitor | | X | | X |
| 7 | 135-122 | Wire Shield | X | X | X | X |
| 8 | 8611-006 | Ground Terminal | X | X | X | X |
| 9 | 3000-968 | 6 Pin Connector | X | X | X | X |
| 10 | 8201-088 | Compressor Control Module | X | X | X | X |
| 11 | 8201-0 | Phase Monitor | | X | | X |
| 12 | 8607-017 | Terminal Block ① (shown) | X | X | X | X |
| 13 | 8551-005 | Start Device (PTCR) ① (shown) | X | | X | |
| 14 | 8201-062 | Alarm Relay ① (shown) | X | X | X | X |
| 15 | 117-137 | Control Panel Top | X | X | X | X |
| 16 | 117-123 | Control Panel | X | X | X | X |
| NS | 4095-130 | Wiring Diagram | X | | | |
| NS | 4095-621 | Wiring Diagram | | X | | |
| NS | 4095-318 | Wiring Diagram | | | X | |
| NS | 4095-620 | Wiring Diagram | | | | X |

NS = Not Shown
 ① = Optional

BLOWER ASSEMBLY

900-231

| Drawing No. | Part No. | Description | |
|-------------|----------|------------------------|---|
| 1 | 151-111 | Housing | 2 |
| 2 | 144-174 | Cutoff | 2 |
| 3 | 8105-029 | Blower Motor (230/208) | X |
| 4 | 8552-002 | Capacitor | X |
| 5 | 8200-031 | Motor Mount | X |
| 6 | 5451-011 | Grommets | 6 |
| 7 | 105-870 | Back Brace | X |
| 8 | 104-868 | Side Angle | 4 |
| 9 | 103-401 | Front Brace | X |
| 10 | 5152-090 | Wheel CW | X |
| 11 | 5152-091 | Wheel CCW | X |



SEXP-295