
REPLACEMENT PARTS MANUAL

WALL MOUNTED PACKAGE AIR CONDITIONER

MODELS: WE302
WE372

General Notes

- Revised and/or additional pages may be issued from time to time.
- A complete and current manual consists of pages shown in the following contents section.

Important

- Contact the installing and/or local Bard distributor for all parts requirements. Make sure you have the complete model and serial number available from the unit rating plates.

Contents

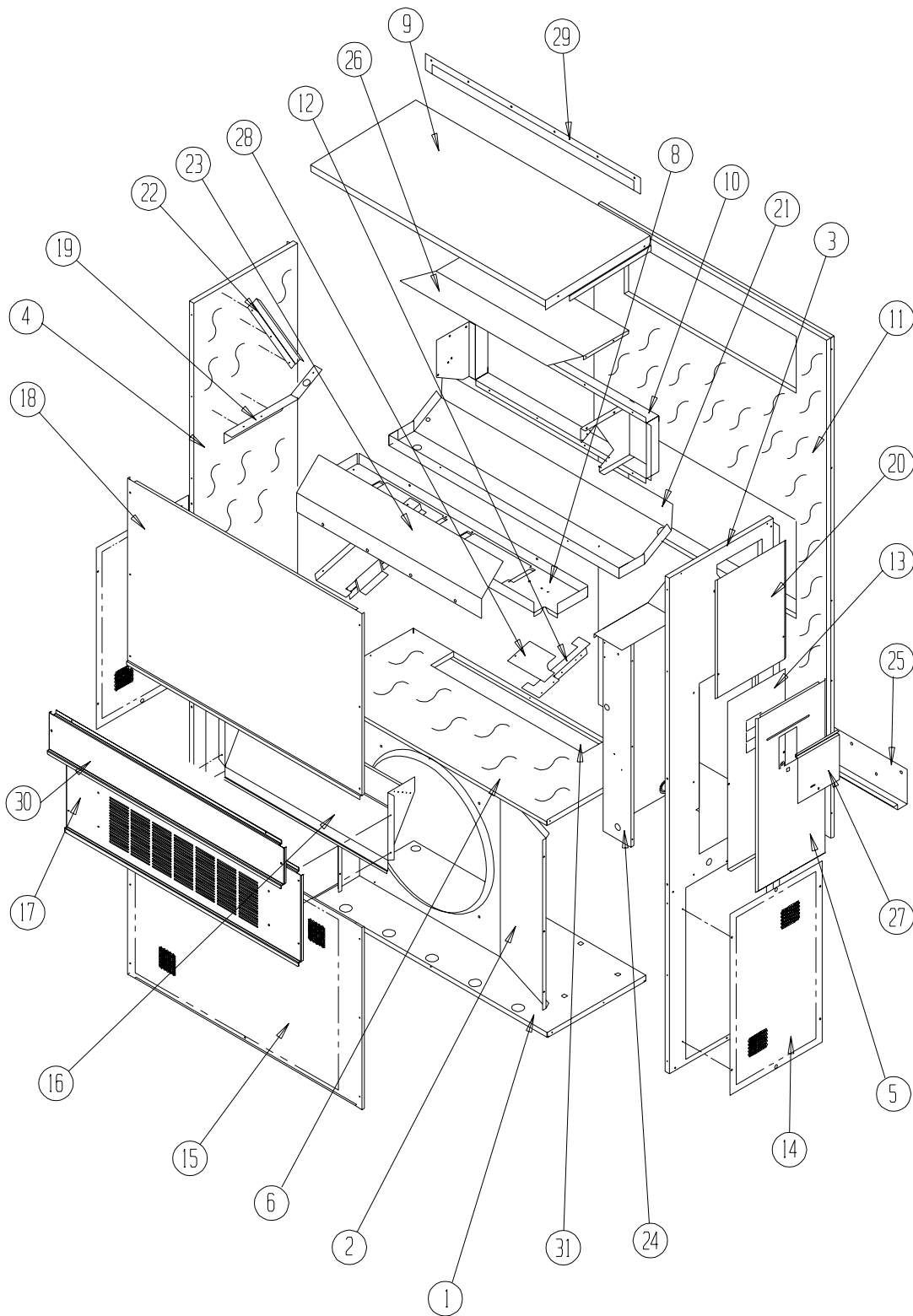
Description	Page
Cabinet Components	
♦ Exploded View	2
♦ Usage List	3
Functional Components	
♦ Exploded View	4
♦ Usage List	5
Control Panel	
♦ Exploded View	6
♦ Usage List	7
Blower Assembly	
♦ Exploded View	8
♦ Usage List	8



Bard Manufacturing Company, Inc.
Bryan, Ohio 43506
Since 1914...Moving ahead, just as planned.

Manual: 2110-449B
Supersedes: 2110-449A
File: 2150-004 Tab 16
Date: 10-22-10

CABINET COMPONENTS



SEXP-514 A

CABINET COMPONENTS

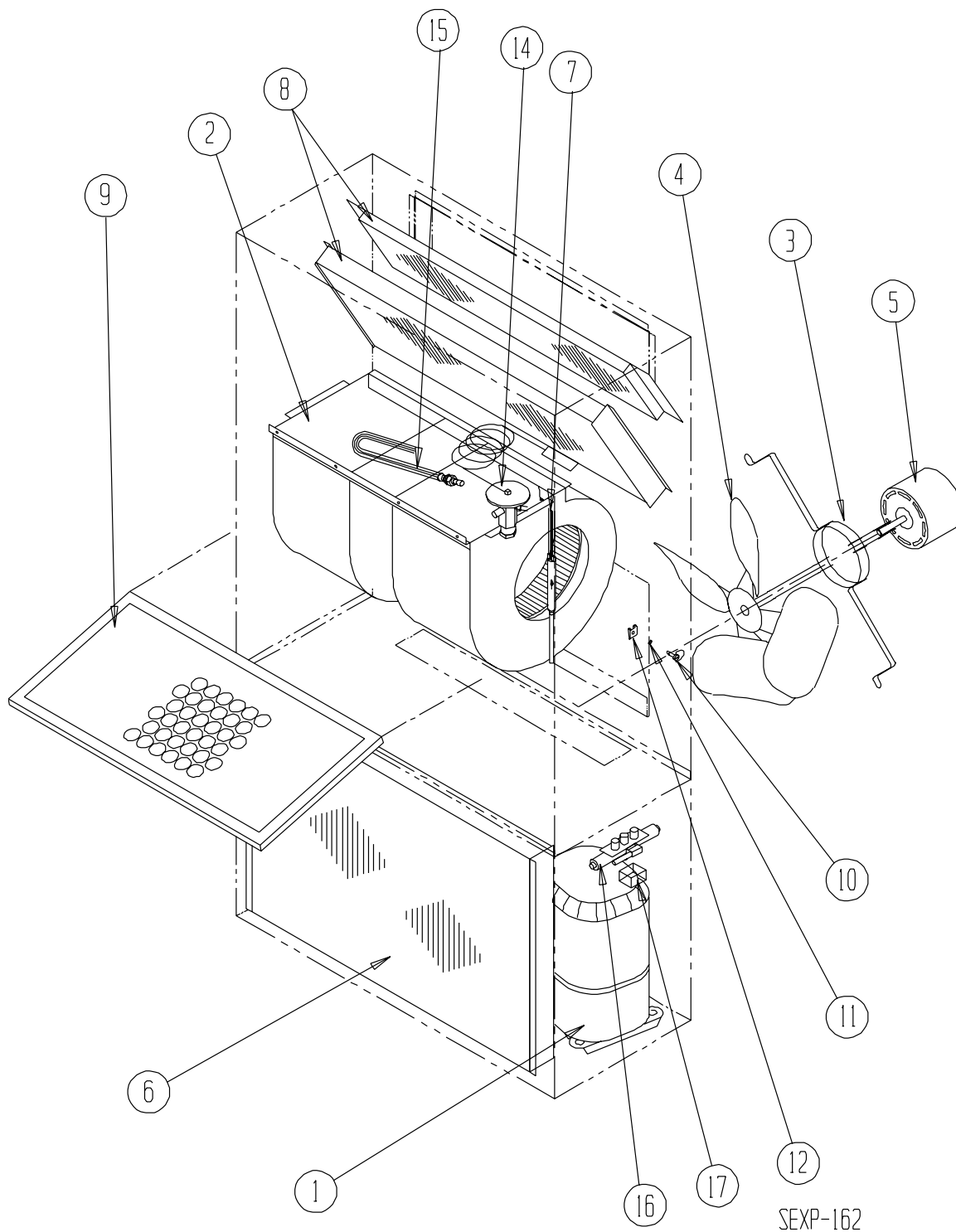
Drawing No.	Part No.	Description	WE302-D	WE302-F	WE372-D	WE372-F
1	S127-199	Lower Base	X	X	X	X
1	S127-368 ③	Lower Base	X	X	X	X
2	125-022	Fan Shroud	X	X	X	X
2	125-057 ③	Fan Shroud	X	X	X	X
3	S500-228-* ①	Right Side	X	X	X	X
3	S500-441 ②	Right Side	X	X	X	X
3	S500-527 ③	Right Side	X	X	X	X
4	S500-229-* ①	Left Side	X	X	X	X
4	S500-442 ②	Left Side	X	X	X	X
4	S500X528 ③	Left Side	X	X	X	X
5	S533-109-* ①	Control Panel Cover (Outer)	X	X	X	X
5	S533-182 ②	Control Panel Cover (Outer)	X	X	X	X
5	S533-197 ③	Control Panel Cover (Outer)	X	X	X	X
6	S521X384	Condenser Partition	X	X	X	X
8	121X182	Blower Partition	X	X	X	X
9	S506-130-* ①	Top	X	X	X	X
9	S506-245 ②	Top	X	X	X	X
9	S506-275 ③	Top	X	X	X	X
10	S111X030	Outlet Airframe Assembly	X	X	X	X
11	S508-088	Back	X	X	X	X
11	S508-185 ②	Back	X	X	X	X
11	S508-222 ③	Back	X	X	X	X
12	113X195	Filter Bracket	2	2	2	2
13	S132-104	Control Panel Cover (Inner)	X		X	
13	S132-172	Control Panel Cover (Inner)		X		X
14	118-056-* ①	Side Grille	2	2	2	2
14	118-060 ②	Side Grille	2	2	2	2
14	118-067 ③	Side Grille	2	2	2	2
15	118-059-* ①	Condenser Grille	X	X	X	X
15	118-061 ②	Condenser Grille	X	X	X	X
15	118-066 ③	Condenser Grille	X	X	X	X
16	BFAD-3	Fresh Air Damper Assembly	X	X	X	X
17	S552-443-* ①	Vent Option Door	X	X	X	X
17	S552-445-* ①	Vent Option Door with ERV	X	X	X	X
17	S552-446 ②	Vent Option Door	X	X	X	X
17	S552-458 ③	Vent Option Door	X	X	X	X
18	S514-160-* ①	Upper Front	X	X	X	X
18	S514-161 ②	Upper Front	X	X	X	X
18	S514-166 ③	Upper Front	X	X	X	X
19	105X850	Left Side Support	X	X	X	X
20	S143-034-* ①	Right Side Cover Plate (Outer)	X	X	X	X
20	S143-103 ②	Right Side Cover Plate (Outer)	X	X	X	X
20	S143-127 ③	Right Side Cover Plate (Outer)	X	X	X	X
21	S123-078	Drain Pan	X	X	X	X
22	147-044	Evaporator Support	X	X	X	X
23	135-124	Air Baffle	X	X	X	X
24	Control Panel Assembly	See Control Panel Assembly Drawing and Parts List	X	X	X	X
25	113-140	Bottom Mounting Bracket	1	1	1	1
26	135X123	Heat Shield	X	X	X	X
27	S153-218-* ①	Disconnect Access Door	X	X	X	X
27	S153-387 ②	Disconnect Access Door	X	X	X	X
27	S153-405 ③	Disconnect Access Door	X	X	X	X
28	137-259	Fill Plate	X	X	X	X
29	113-149-* ①	Top Rain Flashing	X	X	X	X
29	113-360 ③	Top Rain Flashing	X	X	X	X
30	S552-444-* ①	Filter Door	X	X	X	X
30	S552-447 ②	Filter Door	X	X	X	X
30	S552-459 ③	Filter Door	X	X	X	X
31	S536-498	Condenser Partition Block-Off Plate	X	X	X	X

① Exterior cabinet parts are manufactured with various paint color options. To insure that you receive the proper paint color, you must include the complete model and serial number of the unit for which cabinet parts are being ordered.

② Note: Exterior cabinet parts are manufactured from aluminum Code "A"

③ Note: Exterior cabinet parts are manufactured from stainless steel Code "S"

FUNCTIONAL COMPONENTS



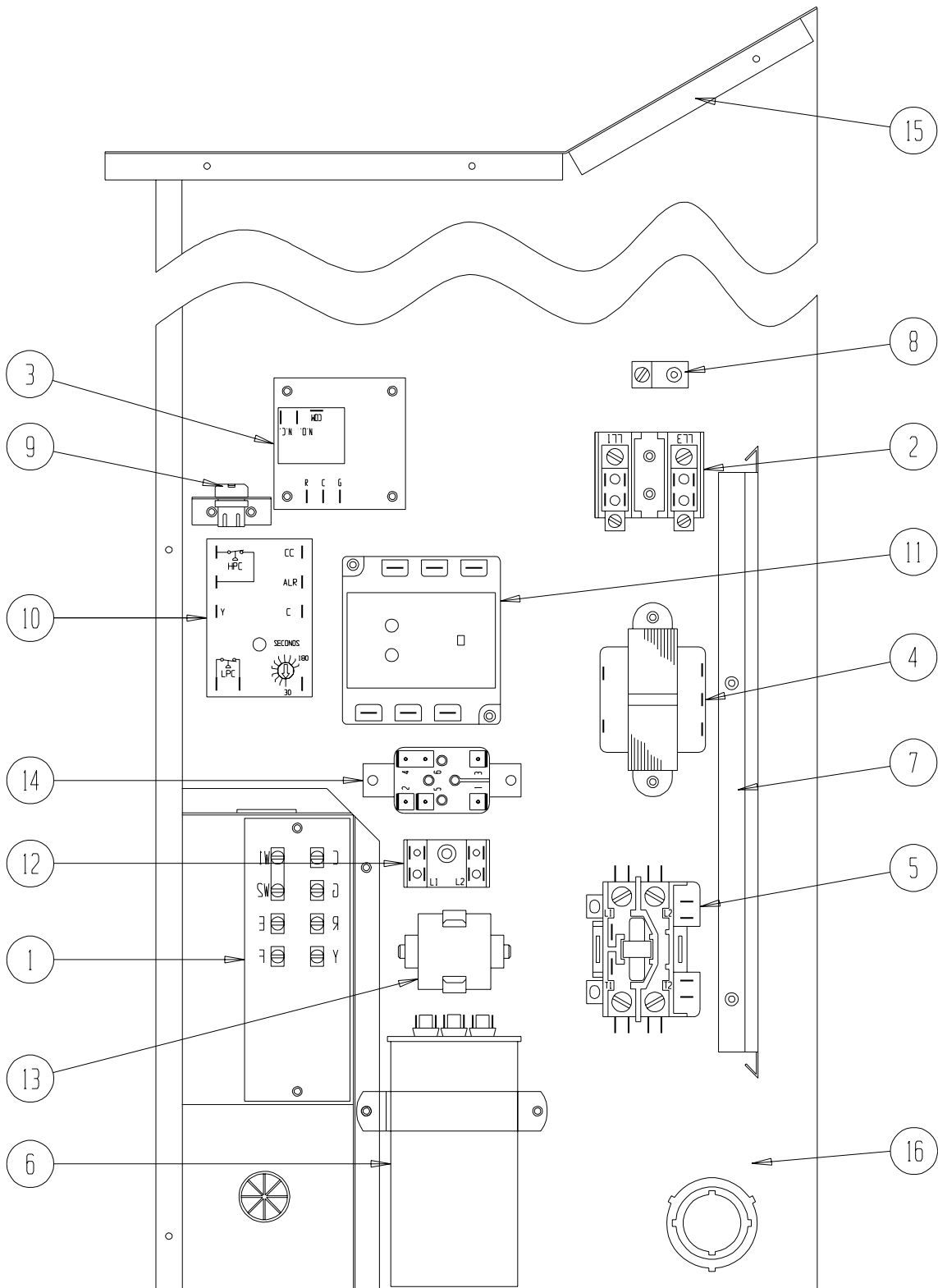
FUNCTIONAL COMPONENTS

Drawing No.	Part No.	Description	WE302-D	WE302-F	WE372-D	WE372-F
1	8000-371	Compressor	X			
1	8000-372	Compressor		X		
1	8000-374	Compressor				X
1	8000-373	Compressor			X	
2	S900-231	Blower Assembly	X	X	X	X
3	8200-001	Fan Motor Mount	X	X	X	X
4	5151-045	Fan Blade	X	X	X	X
5	8103-013	Condenser Motor	X	X	X	X
6	5051-066	Condenser Coil			X	X
6	5051-068	Condenser Coil	X	X		
7	800-0185	Cooling Capillary Assembly			X	X
7	800-0184	Cooling Capillary Assembly	X	X		
8	5060-064	Evaporator Coil	X	X	X	X
9	7004-019	Air Filter 1" Throw Away	X	X	X	X
9	7003-031	Air Filter 1" Washable ①	X	X	X	X
9	7004-026	Air Filter 2" Pleated ①	X	X	X	X
10	1171-022	1/4 Turn Fastener	X	X	X	X
11	1171-024	1/4 Turn Retainer	X	X	X	X
12	1171-023	1/4 Receptacle	X	X	X	X
NS	1804-0106	High Pressure Switch (Flare)	X	X	X	X
NS	1804-0107	Low Pressure Switch (Flare) ①	X	X	X	X
NS	CMA-6	Low Ambient Control (Flare) ①	X	X	X	X
NS	5201-001	Liquid Line Filter Drier	X	X	X	X

NS = Not Shown


① = Optional

CONTROL PANEL



SEXP-291

CONTROL PANEL

Drawing No.	Part No.	Description	WE302-D	WE302-F	WE372-D	WE372-F
1	8607-020	Low Voltage Terminal Strip	X	X	X	X
2	8607-013	Terminal Block 2 Pole			X	2
3	8201-056	Blower Control	X	X	X	X
4	8407-034	Transformer	X	X	X	X
5	8401-007	Compressor Contactor	X		X	
5	8401-002	Compressor Contactor		X		X
6	8552-052	Compressor Capacitor	X			
6	8552-081	Compressor Capacitor			X	
6	8552-002	Outdoor Motor Capacitor		X		X
7	135-122	Wire Shield	X	X	X	X
8	8611-006	Ground Terminal	X	X	X	X
9	3000-968	6 Pin Connector	X	X	X	X
10	8201-088	Compressor Control Module	X	X	X	X
11	8201- 	Phase Monitor		X		X
12	8607-017	Terminal Block ① (shown)	X	X	X	X
13	8551-005	Start Device (PTCR) ① (shown)	X		X	
14	8201-062	Alarm Relay ① (shown)	X	X	X	X
15	117-137	Control Panel Top	X	X	X	X
16	117-123	Control Panel	X	X	X	X
NS	4095-130	Wiring Diagram	X			
NS	4095-621	Wiring Diagram		X		
NS	4095-318	Wiring Diagram			X	
NS	4095-620	Wiring Diagram				X

NS = Not Shown

① = Optional

BLOWER ASSEMBLY

900-231

Drawing No.	Part No.	Description	
1	151-111	Housing	2
2	144-174	Cutoff	2
3	8105-029	Blower Motor (230/208)	X
4	8552-002	Capacitor	X
5	8200-031	Motor Mount	X
6	5451-011	Grommets	6
7	105-870	Back Brace	X
8	104-868	Side Angle	4
9	103-401	Front Brace	X
10	5152-090	Wheel CW	X
11	5152-091	Wheel CCW	X

