
Replacement Parts Manual

QTEC Series Packaged Heat Pump

Models:

QH241 QH301
QH361 QH421
QH481

General Notes

- Revised and/or additional pages may be issued from time to time.
- A complete and current manual consists of pages shown in the following contents section.

Contents

Description	Page
Cabinet Components	
♦ Exploded View	1
♦ Usage List	2
♦ Usage List	3
♦ Blank Page	4
Functional Components	
♦ Exploded View	5
♦ Usage List	6
♦ Usage List	7
♦ Usage List	8
Control Panel Components	
♦ Exploded View	9
♦ Usage List	10
Blower Assembly Components	
♦ Exploded View	11
♦ Usage List	12
Optional Climate Control Components	
♦ Exploded View	13
♦ Usage List	14
Optional Heater Components	
♦ Exploded View	15
♦ Usage List	16
♦ Usage List	17
♦ Usage List	18
Wall Sleeve Cabinet Components	
♦ Exploded View	19
♦ Usage List	20

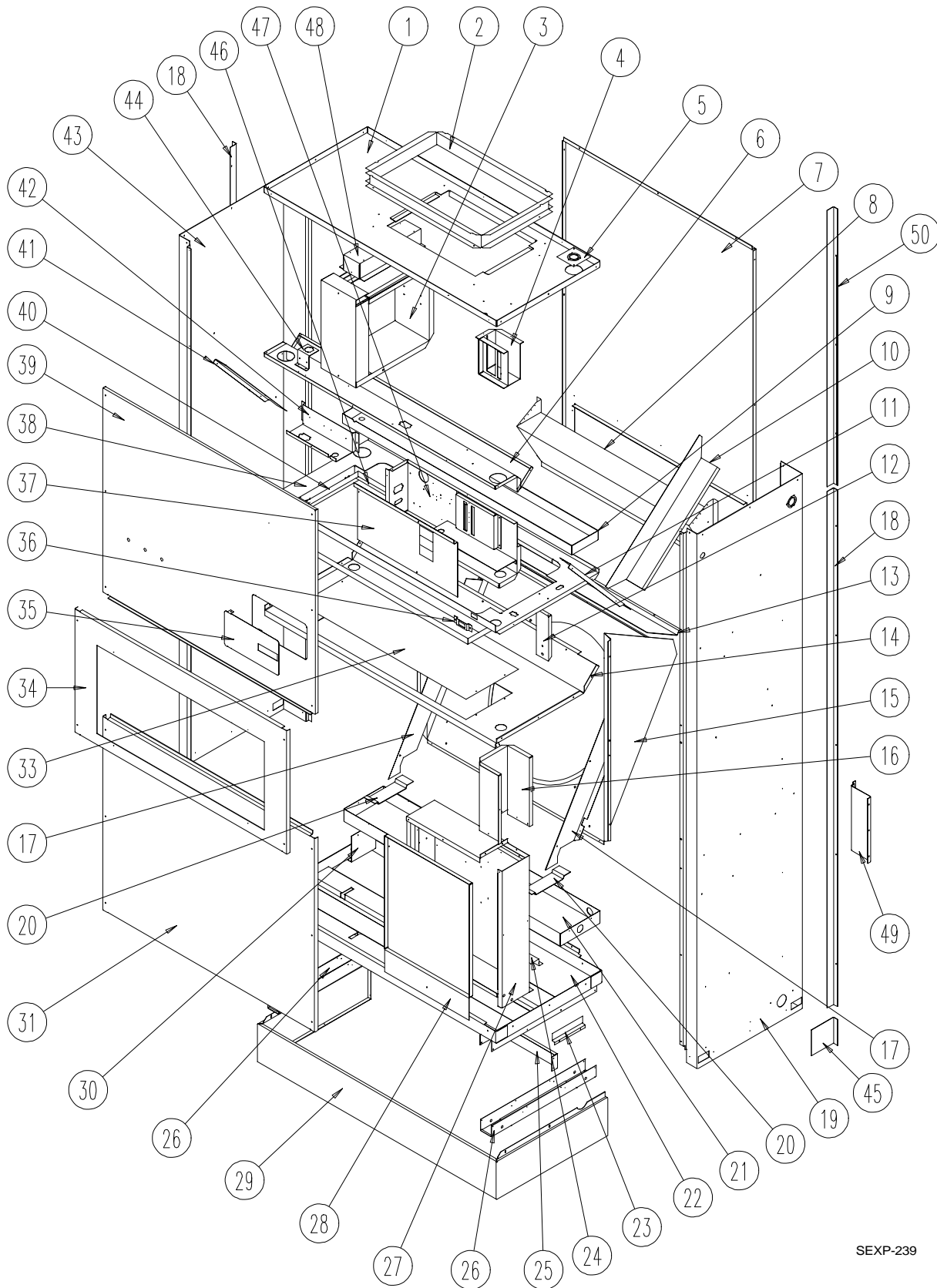


BARD MANUFACTURING COMPANY
Bryan, Ohio 43506

Since 1914...Moving ahead, just as planned.

Manual: 2110-523I
Supersedes: Rev. H
File: Tab 14
Date: 09-17-99

CABINET COMPONENTS



SEXP-239

This Exploded View references the Tables on Page 2 & 3

CABINET COMPONENTS

Drawing No.	Part No.	Description	QH241-A, B	QH241LA, LB	QH241-C	QH241LC	QH301-A, B	QH301LA, LB	QH301-C	QH301LC	QH361-A, -B	QH361LA, LB	QH361-C	QH361LC	QH421-A, B	QH421LA, LB	QH421-C	QH421LC
			X	X	X	X	X	X	X	X	X	X	X	X	X	X	X	X
1	S506-187	Top Assembly	X	X	X	X	X	X	X	X	X	X	X	X	X	X	X	X
2	110-044	Outlet Duct Flange	2	2	2	2	2	2	2	2	2	2	2	2	2	2	2	2
3	See Page 13	Heater Package Assembly (Optional)	X	X	X	X	X	X	X	X	X	X	X	X	X	X	X	X
4	117-187	Low Voltage Box Assembly (Optional)	X	X	X	X	X	X	X	X	X	X	X	X	X	X	X	X
5	136-359	T. K. O. Plate	X	X	X	X	X	X	X	X	X	X	X	X	X	X	X	X
6	534-153	Evaporator Coil Shield Assembly	X	X	X	X	X	X	X	X	X	X	X	X	X	X	X	X
7	508-133	Back Assembly	X	X	X	X	X	X	X	X	X	X	X	X	X	X	X	X
8	538-106	Fresh Air Damper Assembly	X	X	X	X	X	X	X	X	X	X	X	X	X	X	X	X
9	523-093	Evaporator Drain Pan Assembly	X	X	X	X	X	X	X	X	X	X	X	X	X	X	X	X
10	134-154	Wire Channel	X	X	X	X	X	X	X	X	X	X	X	X	X	X	X	X
11	140X226	Right Evaporator Support	X	X	X	X	X	X	X	X	X	X	X	X	X	X	X	X
12	112-227	Filter Sensor Bracket	X	X	X	X	X	X	X	X	X	X	X	X	X	X	X	X
13	142-055	Condenser Coil Fill	X	X	X	X	X	X	X	X	X	X	X	X	X	X	X	X
14	520-304	Condenser Partition Assembly	X	X	X	X	X	X	X	X	X	X	X	X	X	X	X	X
15	124-039	Fan Shroud Left Side	X	X	X	X	X	X	X	X	X	X	X	X	X	X	X	X
15	124-032	Fan Shroud Back	X	X	X	X	X	X	X	X	X	X	X	X	X	X	X	X
15	124-040	Fan Shroud Right Side	X	X	X	X	X	X	X	X	X	X	X	X	X	X	X	X
16	140-228	Wire Channel	X	X	X	X	X	X	X	X	X	X	X	X	X	X	X	X
17	140-229	Condenser Coil Support	2	2	2	2	2	2	2	2	2	2	2	2	2	2	2	2
18	134-177-* ①	Side Trim	2	2	2	2	2	2	2	2	2	2	2	2	2	2	2	2
19	500-373-* ①	Right Side Assembly	X	X	X	X	X	X	X	X	X	X	X	X	X	X	X	X
20	140-227	Subcooling Loop Hold Down	3	3	3	3	3	3	3	3	3	3	3	3	3	3	3	3
21	123-094	Condenser Drain Pan Assembly	X	X	X	X	X	X	X	X	X	X	X	X	X	X	X	X
22	527-268	Lower Base Assembly	X	X	X	X	X	X	X	X	X	X	X	X	X	X	X	X
23	102-415	Pile Seal Offset	X	X	X	X	X	X	X	X	X	X	X	X	X	X	X	X
24	112-226	Water Sensor Bracket	X	X	X	X	X	X	X	X	X	X	X	X	X	X	X	X
25	134-152	Base Shield	X	X	X	X	X	X	X	X	X	X	X	X	X	X	X	X
26	140-225	Lower Roller Support	2	2	2	2	2	2	2	2	2	2	2	2	2	2	2	2
27	See Page 7	Control Panel Components	X	X	X	X	X	X	X	X	X	X	X	X	X	X	X	X
28	132-142	Control Panel Door	X				X				X				X			
28	132-149	Control Panel Door		X				X				X					X	
29	534-155-* ①	Base Trim Assembly	X	X	X	X	X	X	X	X	X	X	X	X	X	X	X	X
30	140-230	Drain Pan Support	X	X	X	X	X	X	X	X	X	X	X	X	X	X	X	X
31	553-313-* ①	Condenser Door Assembly	X	X	X	X	X	X	X	X	X	X	X	X	X	X	X	X
33	536-351	Condenser Blank Off Plate	X	X	X	X	X	X	X	X	X	X	X	X	X	X	X	X
34	553-312-* ①	Filter Door Assembly	X	X	X	X	X	X	X	X	X	X	X	X	X	X	X	X
35	152-265-* ①	Circuit Breaker Door	X	X	X	X	X	X	X	X	X	X	X	X	X	X	X	X
36	112-228	Door Switch Bracket	X	X	X	X	X	X	X	X	X	X	X	X	X	X	X	X
37	132-144	Pull Disconnect Door Inner		X				X				X						X
37	132-143	Circuit Breaker Door Inner	X				X				X				X			
38	130-117	Filter Tray	X	X	X	X	X	X	X	X	X	X	X	X	X	X	X	X
39	See Page 11	Blower Door Assembly	X	X	X	X	X	X	X	X	X	X	X	X	X	X	X	X
40	130-118	Filter Frame	X	X	X	X	X	X	X	X	X	X	X	X	X	X	X	X
41	140Y226	Left Evaporator Support	X	X	X	X	X	X	X	X	X	X	X	X	X	X	X	X
42	116-192	Relay Control Panel	X	X	X	X	X	X	X	X	X	X	X	X	X	X	X	X
43	500-374-* ①	Left Side Assembly	X	X	X	X	X	X	X	X	X	X	X	X	X	X	X	X
44	113-142	Expansion Valve Mounting Plate	X	X	X	X	X	X	X	X	X	X	X	X	X	X	X	X
45	134-165-* ①	Base Trim Extension	2	2	2	2	2	2	2	2	2	2	2	2	2	2	2	2
46	104-981	Filter Frame Back	X	X	X	X	X	X	X	X	X	X	X	X	X	X	X	X
47	See Page 13	Pull Disconnect Assembly		X				X				X						X
47	See Page 13	Circuit Breaker Box Assembly	X				X				X				X			
48	112-229	Heatstrip Bracket	X	X	X	X	X	X	X	X	X	X	X	X	X	X	X	X
49	112-234	Mounting Bracket	2	2	2	2	2	2	2	2	2	2	2	2	2	2	2	2
50	134-178-* ①	Trim	2	2	2	2	2	2	2	2	2	2	2	2	2	2	2	2

① Exterior cabinet parts are manufactured with various color options. To insure that you receive the proper color, you must include the complete models and serial number of the unit for which parts are being ordered.

This Table references Exploded View on Page 1

CABINET COMPONENTS

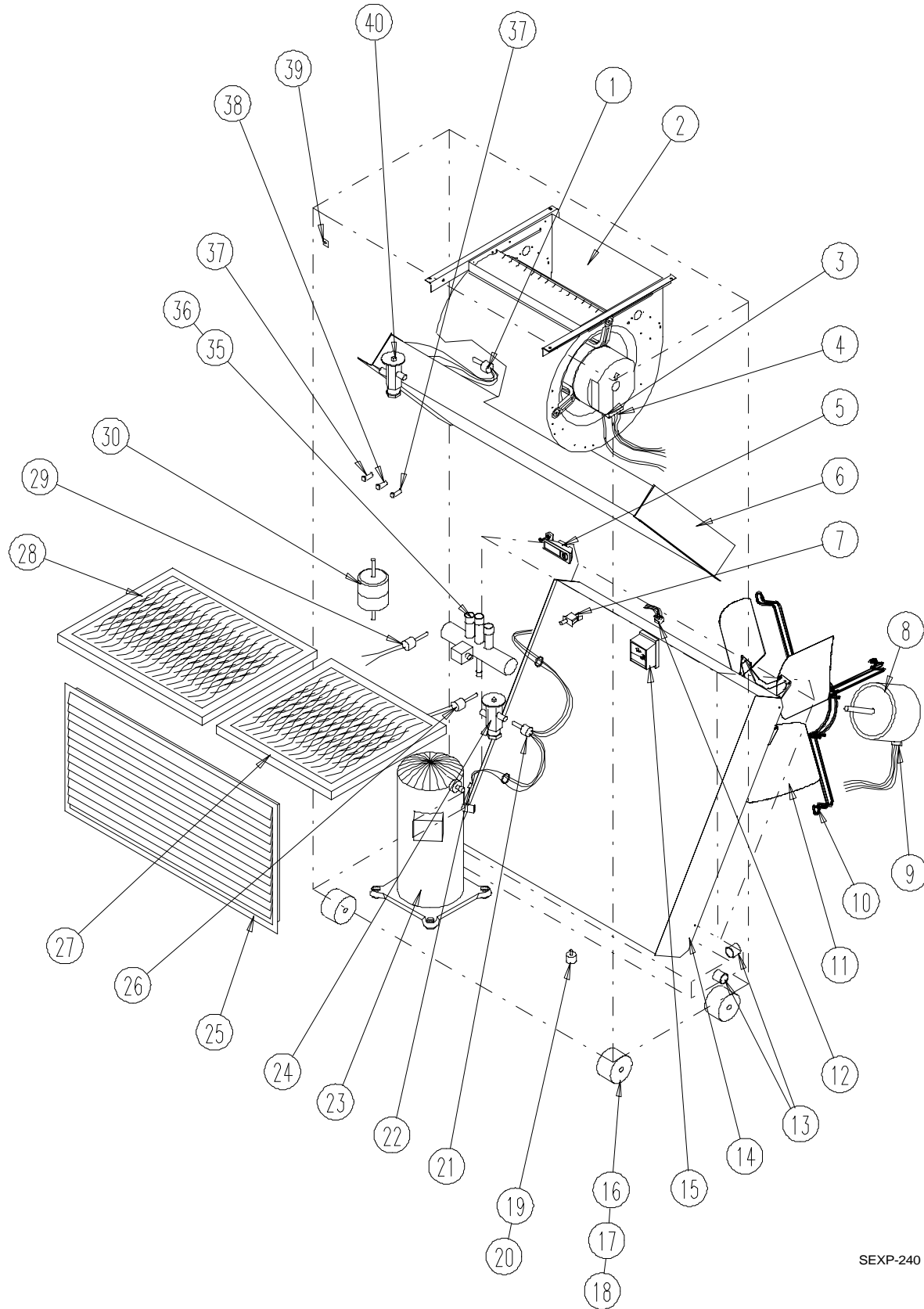
Drawing No.	Part No.	Description	QH481-A, B	QH481-C
			QH481LA, LB	QH481LC
1	S506-214	Top Assembly	X	X
2	110-044	Outlet Duct Flange	2	2
3	See Page 13	Heater Package Assembly (Optional)	X	X
4	117-187	Low Voltage Box Assembly (Optional)	X	X
5	136-359	T. K. O. Plate	X	X
6	534-173	Evaporator Coil Shield Assembly	X	X
7	508-149	Back Assembly	X	X
8	538-106	Fresh Air Damper Assembly	X	X
9	523-098	Evaporator Drain Pan Assembly	X	X
10	134-154	Wire Channel	X	X
11	140X226	Right Evaporator Support	X	X
12	112-227	Filter Sensor Bracket	X	X
13	142-066	Condenser Coil Fill	X	X
14	520-321	Condenser Partition Assembly	X	X
15	124-042	Fan Shroud Back	X	X
15	124-041	Fan Shroud Right Side	X	X
16	140-228	Wire Channel	X	X
17	140-229	Condenser Coil Support	2	2
18	134-177-* ①	Side Trim	2	2
19	500-373-* ①	Right Side Assembly	X	X
20	140-227	Subcooling Loop Hold Down	3	3
21	123-099	Condenser Drain Pan Assembly	X	X
22	527-294	Lower Base Assembly	X	X
23	102-424	Pile Seal Offset – Left	X	X
23	102-415	Pile Seal Offset – Right	X	X
24	112-226	Water Sensor Bracket	X	X
25	134-172	Base Shield	X	X
26	140-225	Lower Roller Support	2	2
27	See Page 7	Control Panel Components	X	X
28	132-142	Control Panel Door	X	
28	132-149	Control Panel Door		X
29	534-174-* ①	Base Trim Assembly	X	X
30	140-230	Drain Pan Support	X	X
31	553-307-* ①	Condenser Door Assembly	X	X
33	536-351	Condenser Blank Off Plate	X	X
34	553-306-* ①	Filter Door Assembly	X	X
35	152-265-* ①	Circuit Breaker Door	X	X
36	112-228	Door Switch Bracket	X	X
37	132-144	Pull Disconnect Door Inner		X
37	132-143	Circuit Breaker Door Inner	X	
38	130-126	Filter Tray	X	X
39	See Page 11	Blower Door Assembly	X	X
40	130-127	Filter Frame	X	X
41	140Y226	Left Evaporator Support	X	X
42	116-192	Relay Control Panel	X	X
43	500-375-* ①	Left Side Assembly	X	X
44	113-142	Expansion Valve Mounting Plate	X	X
45	134-165-* ①	Base Trim Extension	2	2
46	104-1029	Filter Frame Back	X	X
47	See Page 13	Pull Disconnect Assembly		X
47	See Page 13	Circuit Breaker Box Assembly	X	
48	112-229	Heatstrip Bracket	X	X
49	112-234	Mounting Bracket	2	2
50	134-178-* ①	Trim	2	2

① Exterior cabinet parts are manufactured with various color options. To insure that you receive the proper color, you must include the complete model and serial number of the unit for which parts are being ordered.

This Table references Exploded View on Page 1

This page has been left blank intentionally.

FUNCTIONAL COMPONENTS



SEXP-240

This Exploded View references Tables on pages 6, 7 and 8

FUNCTIONAL COMPONENTS

Drawing No.	Part No.	Description	QH241-A	QH241-LA	QH241-B	QH241-LB	QH241-C	QH241-LC	QH301-A	QH301-LA	QH301-B	QH301-LB	QH301-C	QH301-LC	QH361-A	QH361-LA	QH361-B	QH361-LB	QH361-C	QH361-LC	QH421-A	QH421-LA	QH421-B	QH421-LB	QH421-C	QH421-LC	
1	800-0247	Distributor Cooling	X	X	X	X	X	X	X	X	X	X	X	X	X	X	X	X	X	X	X	X	X	X	X	X	
1	800-0248	Distributor Cooling													X	X	X	X	X	X	X	X	X	X	X	X	
2	900-225-001	Blower Assembly	X	X	X				X	X	X																
2	900-225-002	Blower Assembly																									
2	900-225-004	Blower Assembly													X	X	X	X	X	X	X	X	X	X	X	X	
3	3000-1045	Wire Harness High Voltage					X						X							X						X	
3	3000-1046	Wire Harness High Voltage	X	X				X	X	X				X	X					X	X		X	X			
4	3000-1042	Wire Harness Low Voltage	X	X	X	X	X	X	X	X	X	X	X	X	X	X	X	X	X	X	X	X	X	X	X	X	X
5	1171-036	Keylatch/Circuit Breaker Door	X	X	X	X	X	X	X	X	X	X	X	X	X	X	X	X	X	X	X	X	X	X	X	X	X
6	5060-089	Evaporator Coil	X	X	X	X	X	X	X	X	X	X	X	X	X	X	X	X	X	X	X	X	X	X	X	X	
6	5060-090	Evaporator Coil													X	X	X	X	X	X	X	X	X	X	X	X	
7	8406-085	Door Switch	X	X	X	X	X	X	X	X	X	X	X	X	X	X	X	X	X	X	X	X	X	X	X	X	
8	8103-021	Motor	X	X	X	X	X	X	X	X	X	X	X	X	X	X	X	X	X	X	X	X	X	X	X	X	
9	3000-1049	Wire Harness	X	X	X	X	X	X	X	X	X	X	X	X	X	X	X	X	X	X	X	X	X	X	X	X	
10	8200-001	Motor Mount	X	X	X	X	X	X	X	X	X	X	X	X	X	X	X	X	X	X	X	X	X	X	X	X	
11	5151-050	Fan Blade	X	X	X	X	X	X	X	X	X	X	X	X	X	X	X	X	X	X	X	X	X	X	X	X	
12	3000-1047	Wire Harness P3	X	X	X	X	X	X	X	X	X	X	X	X	X	X	X	X	X	X	X	X	X	X	X	X	
13	6094-003	Drain Fitting	2	2	2	2	2	2	2	2	2	2	2	2	2	2	2	2	2	2	2	2	2	2	2	2	
14	5051-095	Condenser Coil	X	X	X	X	X	X	X	X	X	X	X	X	X	X	X	X	X	X	X	X	X	X	X	X	
14	5051-096	Condenser Coil													X	X	X	X	X	X	X	X	X	X	X	X	
15	8301-011	Dirty Filter Switch	X	X	X	X	X	X	X	X	X	X	X	X	X	X	X	X	X	X	X	X	X	X	X	X	
16	1171-035	Wheel	4	4	4	4	4	4	4	4	4	4	4	4	4	4	4	4	4	4	4	4	4	4	4	4	
17	1012-129	Bolt - Shoulder	4	4	4	4	4	4	4	4	4	4	4	4	4	4	4	4	4	4	4	4	4	4	4	4	
18	1012-224	Nut - Locking	4	4	4	4	4	4	4	4	4	4	4	4	4	4	4	4	4	4	4	4	4	4	4	4	
19	8406-083	Water Level Switch	X	X	X	X	X	X	X	X	X	X	X	X	X	X	X	X	X	X	X	X	X	X	X	X	
20	1012-316	Nut - Water Level Switch	X	X	X	X	X	X	X	X	X	X	X	X	X	X	X	X	X	X	X	X	X	X	X	X	
21	800-0249	Distributor - Heating	X	X	X	X	X	X	X	X	X	X	X	X	X	X	X	X	X	X	X	X	X	X	X	X	
21	800-0250	Distributor - Heating													X	X	X	X	X	X	X	X	X	X	X	X	
22	910-1257	Defrost Sensor	X	X	X	X	X	X	X	X	X	X	X	X	X	X	X	X	X	X	X	X	X	X	X	X	
23	8000-171	Compressor	X																								
23	8000-201	Compressor		X																							
23	8000-202	Compressor			X																						
23	8000-172	Compressor					X																				
23	8000-203	Compressor							X																		
23	8000-204	Compressor									X																
23	8000-175	Compressor													X												
23	8000-163	Compressor														X											
23	8000-164	Compressor															X										
23	8000-177	Compressor																X				X					
23	8000-205	Compressor																					X				
23	8000-206	Compressor																						X		X	
24	5651-137	TXV Heating	X	X	X																						
24	5651-138	TXV Heating						X	X	X																	
24	5651-102	TXV Heating													X	X	X	X	X	X	X	X	X	X	X	X	
25	7051-034	Return Air Grille	X	X	X	X	X	X	X	X	X	X	X	X	X	X	X	X	X	X	X	X	X	X	X	X	
26	8406-055	High Pressure Control	X	X	X	X	X	X	X	X	X	X	X	X	X	X	X	X	X	X	X	X	X	X	X	X	
27	7004-009	Air Filter	X	X	X	X	X	X	X	X	X	X	X	X	X	X	X	X	X	X	X	X	X	X	X	X	
27	7004-032	Filter 2" Fiberglass (Optional)	X	X	X	X	X	X	X	X	X	X	X	X	X	X	X	X	X	X	X	X	X	X	X	X	
27	7004-034	Filter 2" Pleated (Optional)	X	X	X	X	X	X	X	X	X	X	X	X	X	X	X	X	X	X	X	X	X	X	X	X	
28	7004-010	Air Filter	X	X	X	X	X	X	X	X	X	X	X	X	X	X	X	X	X	X	X	X	X	X	X	X	
28	7004-033	Filter 2" Fiberglass (Optional)	X	X	X	X	X	X	X	X	X	X	X	X	X	X	X	X	X	X	X	X	X	X	X	X	
28	7004-035	Filter 2" Pleated (Optional)	X	X	X	X	X	X	X	X	X	X	X	X	X	X	X	X	X	X	X	X	X	X	X	X	
<i>Continued on Page 7</i>																											

This Table references Exploded View on Page 5

FUNCTIONAL COMPONENTS

Drawing No.	Part No.	Description	QH241-A	QH241LA	QH241-B	QH241LB	QH241-C	QH241LC	QH301-A	QH301LA	QH301-B	QH301LB	QH301-C	QH301LC	QH361-A	QH361LA	QH361-B	QH361LB	QH361-C	QH361LC	QH421-A	QH421LA	QH421-B	QH421LB	QH421-C	QH421LC
			<i>Continued from Page 4</i>																							
29	8406-061	Low Pressure Control	X	X	X	X	X	X	X	X	X	X	X	X	X	X	X	X	X	X	X	X	X	X	X	X
30	5201-009	Filter/Drier	X	X	X	X	X	X	X	X	X	X	X	X	X	X	X	X	X	X	X	X	X	X	X	X
31	1171-038	Cupped Washer Black	4	4	4	4	4	4	4	4	4	4	4	4	4	4	4	4	4	4	4	4	4	4	4	4
35	5650-020	Reversing Valve	X	X	X				X	X	X															
35	5650-021	Reversing Valve							X	X	X															
35	5650-025	Reversing Valve							X	X	X															
36	5650-022	Solenoid Coil	X	X	X	X	X	X	X	X	X	X	X	X	X	X	X	X	X	X	X	X	X	X	X	X
37	8611-094	Indicator Light - Red	2	2	2	2	2	2	2	2	2	2	2	2	2	2	2	2	2	2	2	2	2	2	2	2
38	8611-095	Indicator Light - Yellow	X	X	X	X	X	X	X	X	X	X	X	X	X	X	X	X	X	X	X	X	X	X	X	X
39	1012-315	"U" Clip Fastener	16	16	16	16	16	16	16	16	16	16	16	16	16	16	16	16	16	16	16	16	16	16	16	16
40	5651-137	TXV Cooling	X	X	X				X	X	X															
40	5651-138	TXV Cooling							X	X	X															
40	5651-102	TXV Cooling													X	X	X	X	X	X	X	X	X	X	X	X
NS	1804-0108	Low Ambient Control	X	X	X	X	X	X	X	X	X	X	X	X	X	X	X	X	X	X	X	X	X	X	X	X

Drawing No.	Part No.	Description	QH241-A	QH241-B	QH241-C	QH301-A	QH301-B	QH301-C	QH361-A	QH361-B	QH361-C	QH421-A	QH421-B	QH421-C
			<i>Continued from Page 4</i>											
NS	4100-101	Wiring Diagram	X			X			X			X		
NS	4100-201	Wiring Diagram		X			X			X			X	
NS	4100-301	Wiring Diagram			X			X			X			X

Drawing No.	Part No.	Description	QH241LA	QH241LB	QH241LC	QH301LA	QH301LB	QH301LC	QH361LA	QH361LB	QH361LC	QH421LA	QH421LB	QH421LC
			<i>Continued from Page 4</i>											
NS	4100-102	Wiring Diagram	X			X			X			X		
NS	4100-202	Wiring Diagram		X			X			X			X	
NS	4100-302	Wiring Diagram			X			X			X			X

This Table references Exploded View on Page 5

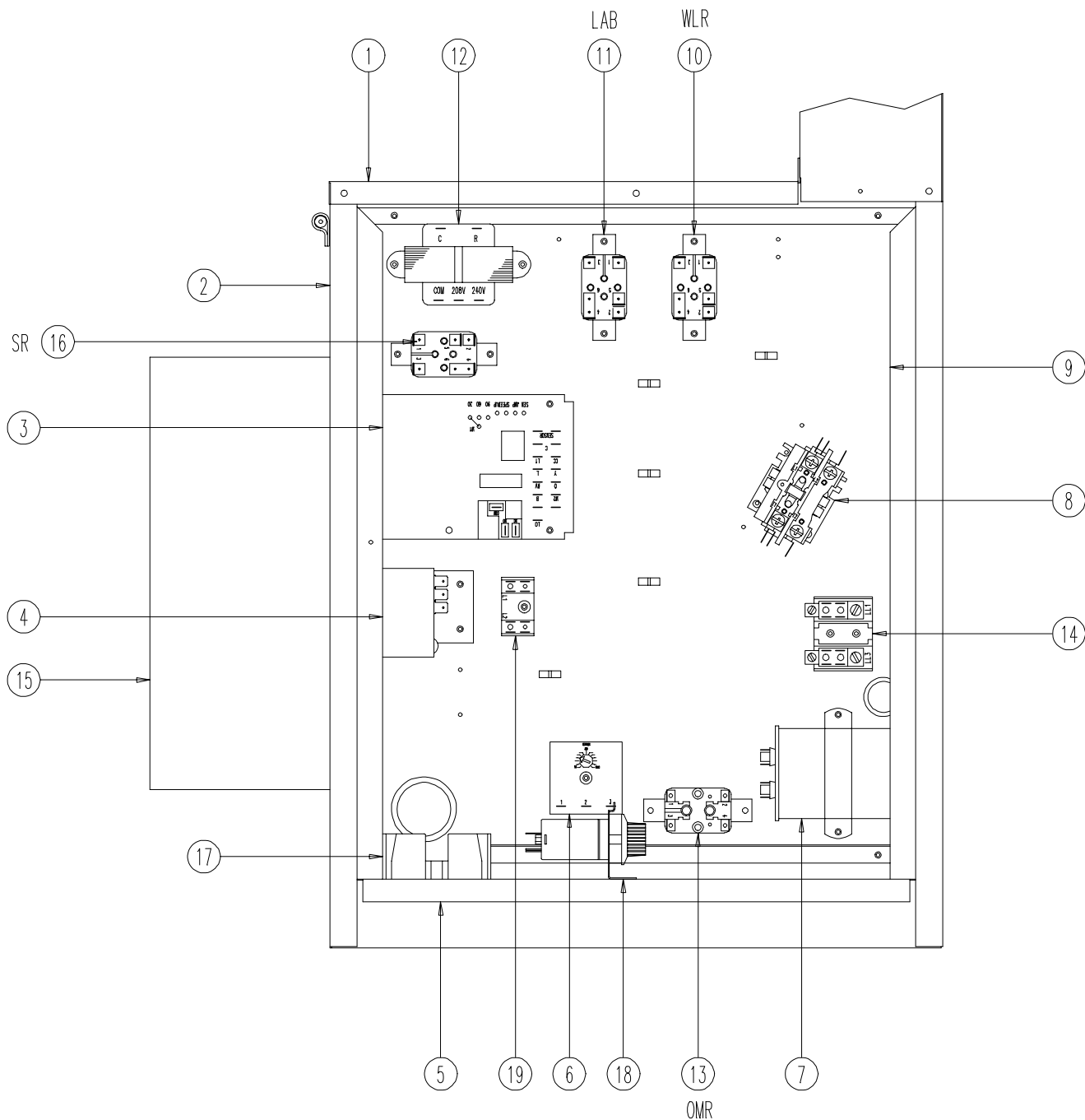
FUNCTIONAL COMPONENTS

Drawing			QH481-A	QH481-B	QH481-C
No.	Part No.	Description	QH481LA	QH481LB	QH481LC
1	800-0266	Distributor Cooling	X	X	X
2	900-225-005	Blower Assembly	X	X	X
3	3000-1045	Wire Harness High Voltage			X
3	3000-1046	Wire Harness High Voltage	X	X	
4	3000-1042	Wire Harness Low Voltage	X	X	X
5	1171-036	Keylatch/Circuit Breaker Door	X	X	X
6	5060-095	Evaporator Coil	X	X	X
7	8406-085	Door Switch	X	X	X
8	8103-021	Motor	X	X	X
9	3000-1049	Wire Harness	X	X	X
10	8200-001	Motor Mount	X	X	X
11	5151-050	Fan Blade	X	X	X
12	3000-1047	Wire Harness P3	X	X	X
13	6094-003	Drain Fitting	2	2	2
14	5051-104	Condenser Coil	X	X	X
15	8301-011	Dirty Filter Switch	X	X	X
16	1171-035	Wheel	4	4	4
17	1012-129	Bolt - Shoulder	4	4	4
18	1012-224	Nut - Locking	4	4	4
19	8406-083	Water Level Switch	X	X	X
20	1012-316	Nut - Water Level Switch	X	X	X
21	800-0267	Distributor - Heating	X	X	X
22	910-1257	Defrost Sensor	X	X	X
23	8000-218	Compressor	X		
23	8000-221	Compressor		X	
23	8000-222	Compressor			X
24	5651-103	TXV Heating	X	X	X
25	7051-039	Return Air Grille	X	X	X
26	8406-055	High Pressure Control	X	X	X
27	7004-009	Air Filter	X	X	X
27	7004-032	Filter 2" Fiberglass (Optional)	X	X	X
27	7004-034	Filter 2" Pleated (Optional)	X	X	X
28	7004-011	Air Filter	X	X	X
28	7004-036	Filter 2" Fiberglass (Optional)	X	X	X
28	7004-037	Filter 2" Pleated (Optional)	X	X	X
29	8406-061	Low Pressure Control	X	X	X
30	5201-009	Filter/Drier	X	X	X
31	1171-038	Cupped Washer Black	4	4	4
35	5650-025	Reversing Valve	X	X	X
36	5650-022	Solenoid Coil	X	X	X
37	8611-094	Indicator Light - Red	2	2	2
38	8611-095	Indicator Light - Yellow	X	X	X
39	1012-315	"U" Clip Fastener	16	16	16
40	5651-103	TXV Cooling	X	X	X
NS	1804-0108	Low Ambient Control	X	X	X

Drawing			QH481-A	QH481-B	QH481-C	QH481LA	QH481LB	QH481LC
No.	Part No.	Description						
NS	4100-101	Wiring Diagram	X					
NS	4100-201	Wiring Diagram		X				
NS	4100-301	Wiring Diagram			X			
NS	4100-102	Wiring Diagram				X		
NS	4100-202	Wiring Diagram					X	
NS	4100-302	Wiring Diagram						X

These Tables reference Exploded View on Page 5

CONTROL PANEL COMPONENTS



SEXP-314

This Exploded View references Table on page 10

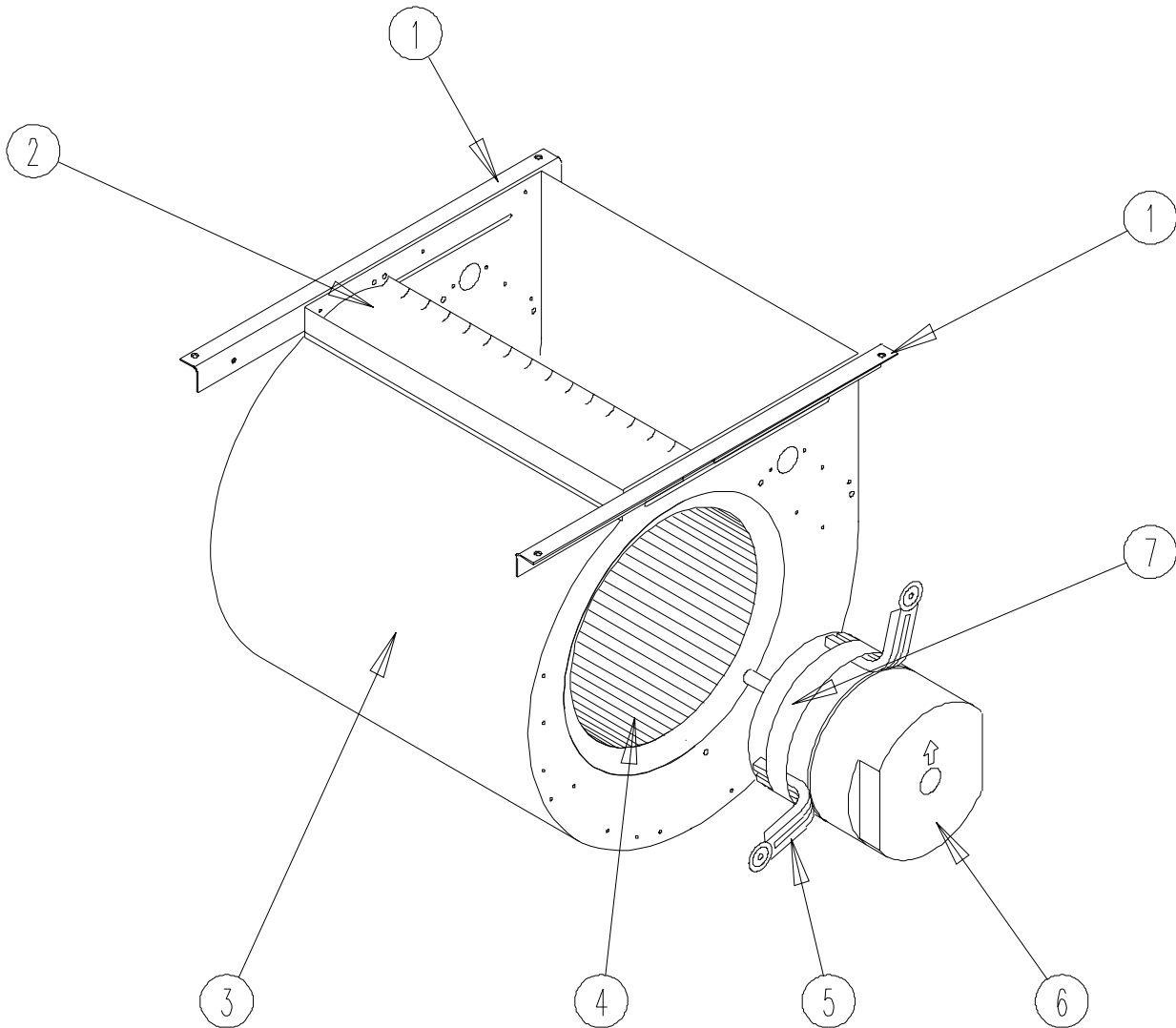
CONTROL PANEL COMPONENTS

Drawing No.	Part No.	Description	QH241-A	QH301-A	QH361-A	QH421-A	QH481-A	QH241-B	QH301-B	QH361-B	QH421-B	QH481-B	QH241-C	QH301-C	QH361-C	QH421-C	QH481-C	QH241LA	QH301LA	QH361LA	QH421LA	QH241LB	QH301LB	QH361LB	QH421LB	QH481LB	QH241LC	QH301LC	QH361LC	QH421LC	QH481LC									
1	116-186	Control Panel Top	X	X	X	X	X	X	X	X	X	X	X	X	X	X	X	X	X	X	X	X	X	X	X	X	X	X	X	X	X	X								
2	116-184	Control Panel	X	X	X	X	X	X	X	X	X	X	X	X	X	X	X	X	X	X	X	X	X	X	X	X	X	X	X	X	X	X	X							
3	8201-069	Heat Pump Control	X	X	X	X	X	X	X	X	X	X	X	X	X	X	X	X	X	X	X	X	X	X	X	X	X	X	X	X	X	X	X	X						
4	8408-034	Condenser Motor Thermostat	X	X	X	X	X	X	X	X	X	X	X	X	X	X	X	X	X	X	X	X	X	X	X	X	X	X	X	X	X	X	X	X	X					
5	126-266	Control Panel Base	X	X	X	X	X	X	X	X	X	X	X	X	X	X	X	X	X	X	X	X	X	X	X	X	X	X	X	X	X	X	X	X	X					
6	8201-078	Low Pressure Bypass TDR	X	X	X	X	X	X	X	X	X	X	X	X	X	X	X	X	X	X	X	X	X	X	X	X	X	X	X	X	X	X	X	X	X	X				
7	8552-002	Capacitor	X					X					X					X					X																	
7	8552-050	Capacitor																																						
7	8552-052	Capacitor																																						
7	8552-063	Capacitor																																						
7	8552-062	Capacitor																																						
8	8401-007	Contact	X	X	X	X	X	X	X	X	X	X	X	X	X	X	X	X	X	X	X	X	X	X	X	X	X	X	X	X	X	X	X	X	X	X	X	X		
8	8401-002	Contact	X	X	X	X	X	X	X	X	X	X	X	X	X	X	X	X	X	X	X	X	X	X	X	X	X	X	X	X	X	X	X	X	X	X	X	X	X	
9	116-186	Control Panel Mounting Plate	X	X	X	X	X	X	X	X	X	X	X	X	X	X	X	X	X	X	X	X	X	X	X	X	X	X	X	X	X	X	X	X	X	X	X	X	X	
10	8201-062	Relay SPDT Pilot Duty WLR	X	X	X	X	X	X	X	X	X	X	X	X	X	X	X	X	X	X	X	X	X	X	X	X	X	X	X	X	X	X	X	X	X	X	X	X	X	
11	8201-009	Relay LAB	X	X	X	X	X	X	X	X	X	X	X	X	X	X	X	X	X	X	X	X	X	X	X	X	X	X	X	X	X	X	X	X	X	X	X	X	X	
12	8407-035	Transformer	X	X	X	X	X	X	X	X	X	X	X	X	X	X	X	X	X	X	X	X	X	X	X	X	X	X	X	X	X	X	X	X	X	X	X	X	X	
13	8201-009	Relay OMR	X	X	X	X	X	X	X	X	X	X	X	X	X	X	X	X	X	X	X	X	X	X	X	X	X	X	X	X	X	X	X	X	X	X	X	X	X	
14	8607-013	Terminal Block Two Terminals																																						
15	8407-003	Transformer Stepdown 1.5 KVA												X	X	X	X	X																						
15	8407-004	Transformer Stepdown 2.0 KVA												X	X	X	X	X																						
16	8201-015	Staging Relay SR																	X	X	X	X	X	X	X	X	X	X	X	X	X	X	X	X	X	X	X	X	X	
17	8614-041	Fuse Holder												X	X	X	X	X																						
18	8408-028	Outdoor Thermostat	X	X	X	X	X	X	X	X	X	X	X	X	X	X	X	X	X	X	X	X	X	X	X	X	X	X	X	X	X	X	X	X	X	X	X	X	X	X
19	8607-017	Terminal block (Optional)	X	X	X	X	X	X	X	X	X	X	X	X	X	X	X	X	X	X	X	X	X	X	X	X	X	X	X	X	X	X	X	X	X	X	X	X	X	X
NS	8614-046	Fuses Class CC 5A												2	2	2	2	2																						
NS	8614-042	Fuses Class CC 7A												2	2	2	2	2																						

(1) 7 Amp fuses used with 2 KVA Stepdown transformer which is standard equipment when an energy recovery ventilator is used.
 NS Not Shown

This Table references Exploded View on Page 9

BLOWER ASSEMBLY COMPONENTS



SEXP-245

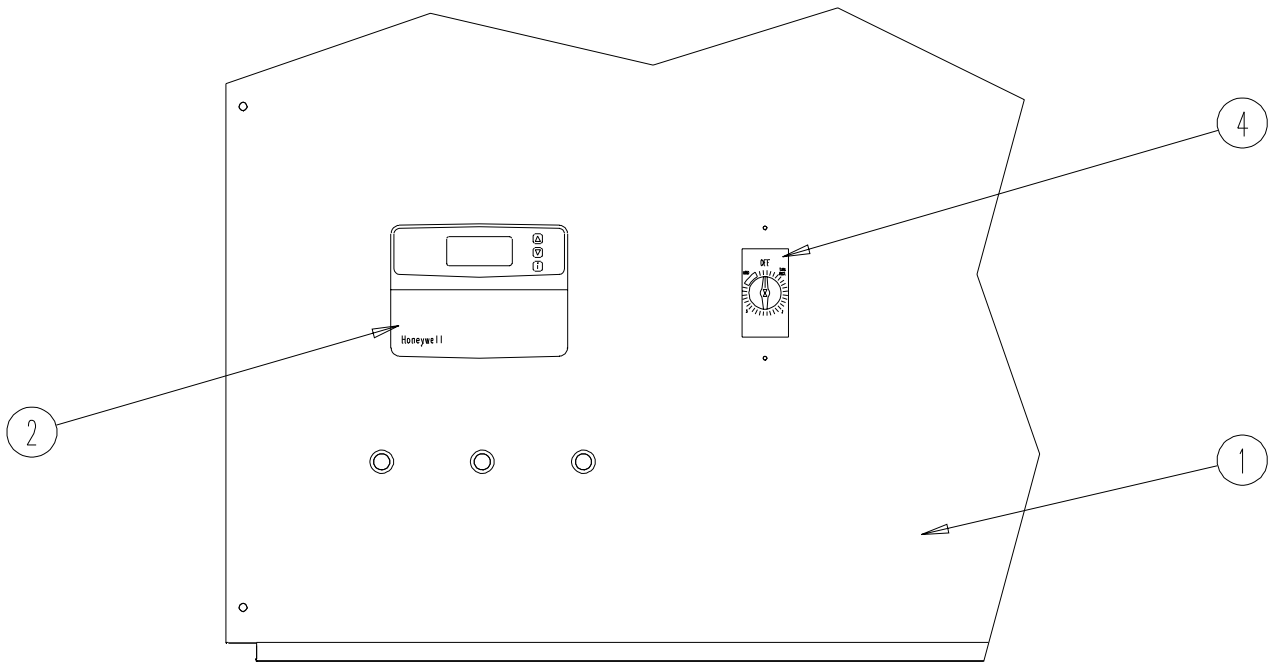
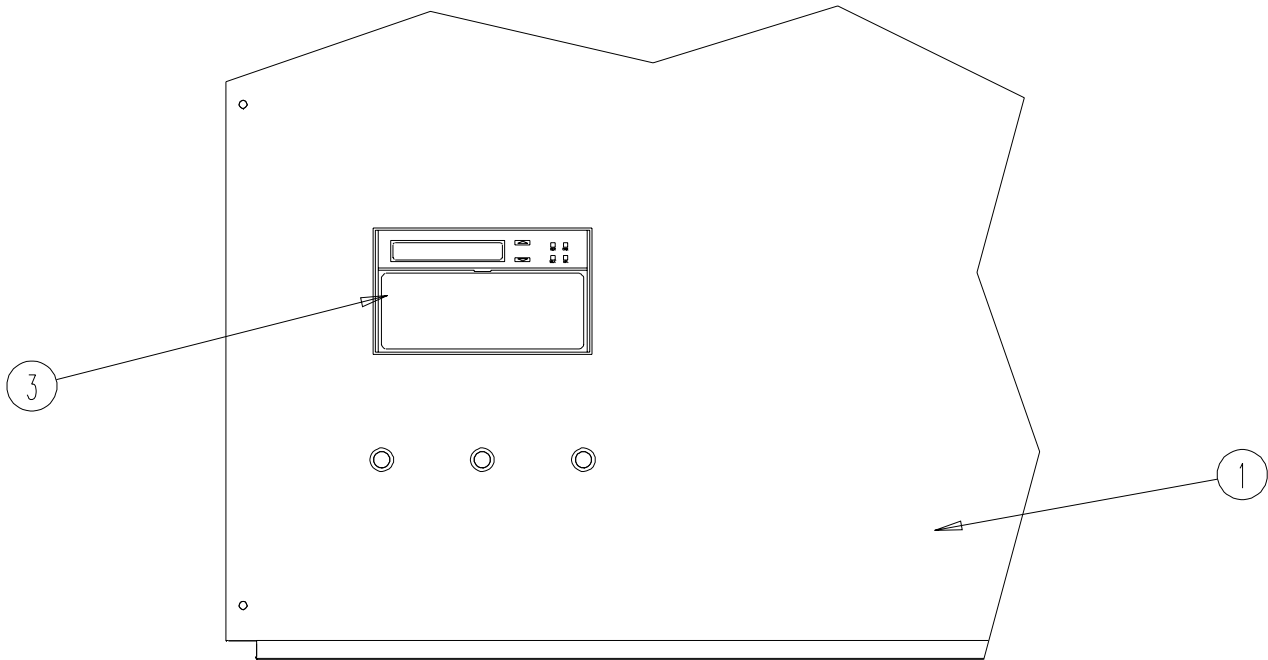
This Exploded View references Table on page 12

BLOWER ASSEMBLY COMPONENTS

Drawing No.	Part No.	Description	900-225-001	900-225-002	900-225-004	900-225-005
1	104-980	Blower Angle	2	2	2	2
2	144-131	Diffuser	X	X	X	X
3	151-110	Blower Housing	X	X	X	X
4	5152-061	Blower Wheel	X	X	X	X
5	8200-034	Motor Mount Arm	3	3	3	3
6	8106-035-0003	Motor	X			
6	8106-035-0004	Motor		X		
6	8106-035-0005A	Motor			X	
6	8106-035-0013	Motor				X
7	8200-033	Motor Mount Band	X	X	X	X

This Table references Exploded View on Page 11

OPTIONAL CLIMATE CONTROLS



SEXP-247

This Exploded View references Table on page 14

OPTIONAL CLIMATE CONTROLS

OPTIONAL CLIMATE CONTROL REPLACEMENT PARTS –

See table below to determine which Climate Control Option is installed:

Drawing No.	Part No.	Description	QH241, QH301, QH361, QH421					QH481										
			Option X	Option A	Option B	Option C	Option D	Option X	Option A	Option B	Option C	Option D						
1	552-270-6	Blower Door	X															
1	552-268-6	Blower Door		X														
1	552-269-6	Blower Door			X													
1	552-308-6	Blower Door											X					
1	552-309-6	Blower Door																X
1	552-310-6	Blower Door																X
2	8403-042	Electronic/Non-Programmable/Manual/Auto Change Over		X														
3	8403-034	Electronic/Programmable/Manual/Auto Change Over																
4	8612-016	Timer 4 Hours		X														
4	8612-015	Timer 6 Hours																X
NS	4102-001	Wiring Diagram	X															
NS	4102-009	Wiring Diagram																
NS	4102-010	Wiring Diagram																
NS	4102-004	Wiring Diagram																
NS	3000-1051	Wire Harness, Lights to P1																
NS	3000-1050	Wire Harness, Low Voltage Terminal Strip to P2																
NS	3000-1101	Wire Harness, Thermostat to P2																
NS	3000-1102	Wire Harness, Thermostat to P2																
NS	3000-1052	Wire Harness, Thermostat to P2																
NS	8607-019	Low Voltage Terminal Block																

NS Not Shown

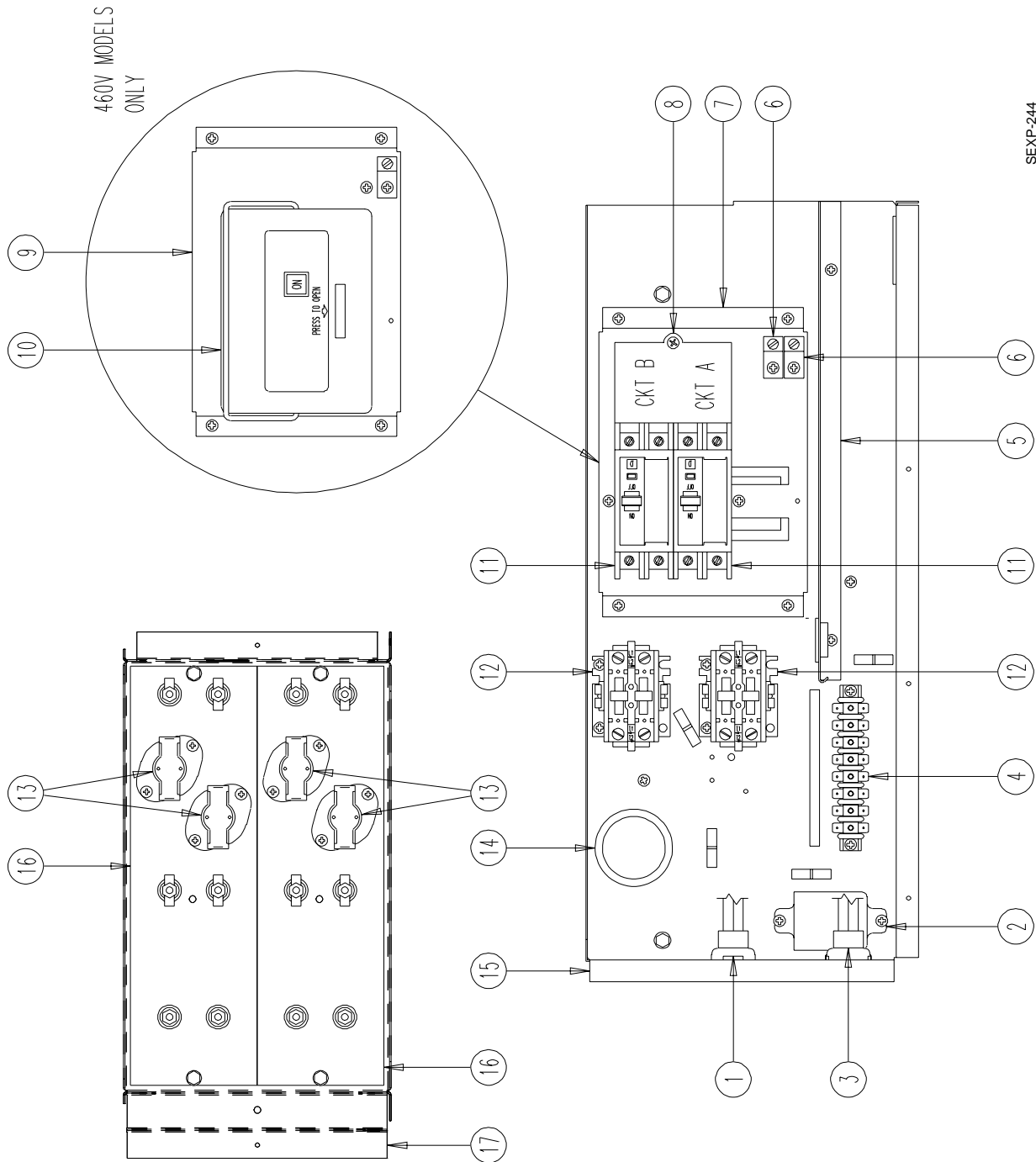
This Table references Exploded View on Page 13

CLIMATE CONTROL OPTION NOMENCLATURE AS SHOWN IN UNIT MODEL NUMBER

QH 361 - A 09 X X X X X X

- X – None
- A – Electronic, non-programmable, manual change over
- B – Electronic, non-programmable, manual change over, 4 hour timer
- C – Electronic, non-programmable, manual change over, 6 hour timer
- D – Electronic, programmable, manual/auto change over

OPTIONAL HEATER COMPONENTS



SEXP-244

This Exploded View references Tables on pages 16, 17 and 18

OPTIONAL HEATER COMPONENTS

Drawing No.	Part No.	Description	QH241-A0Z	QH301-A0Z	QH361-A0Z	QH421-A0Z	QH481-A0Z	QH241-A05	QH301-A05	QH361-A05	QH421-A05	QH481-A05	QH241-A10	QH301-A10	QH361-A10	QH421-A10	QH481-A10	QH361-A15	QH421-A15	QH481-A15	QH241LA05	QH301LA05	QH421LA05	QH481LA05	QH241LA10	QH301LA10	QH361LA10	QH421LA10	QH481LA10												
1	3000-1044	Wire Set P2																																							
2	8201-048	Relay																																							
3	3000-1043	Wire Set P1																																							
4	8607-022	Terminal Block																																							
5	116-190	Box Partition																																							
6	8611-006	Ground Lug																																							
7	126-267	Circuit Breaker Base																																							
8	8615-047	Jumper Bar Base																																							
11	8615-036	Circuit Breaker 2 Pole 25A Ckt B																																							
11	8615-037	Circuit Breaker 2 Pole 30A Ckt A																																							
11	8615-038	Circuit Breaker 2 Pole 35A Ckt A																																							
11	8615-055	Circuit Breaker 2 Pole 40A Ckt A																																							
11	8615-039	Circuit Breaker 2 Pole 45A Ckt A																																							
11	8615-040	Circuit Breaker 2 Pole 50A Ckt A																																							
11	8615-040	Circuit Breaker 2 Pole 50A Ckt B																																							
11	8615-041	Circuit Breaker 2 Pole 60A Ckt A																																							
12	8401-006	Contactor 2 Pole 20A																																							
13	8402-100	Limits																																							
14	8611-026	Snap Bushings 1-3/4																																							
15	116-189	Heater Box																																							
16	8604-103	Heat Strip 5 KW																																							
16	8604-104	Heat Strip 10 KW																																							
17	116-191	Heat Strip Wrapper																																							
NS	132-145	Heat Strip Cover																																							
NS	4101-100	Wiring Diagram																																							
NS	4101-101	Wiring Diagram																																							
NS	4101-102	Wiring Diagram																																							
NS	4101-103	Wiring Diagram																																							
NS	4101-104	Wiring Diagram																																							
NS	4101-105	Wiring Diagram																																							
NS	4101-106	Wiring Diagram																																							

NS Not Shown

This Table references Exploded View on Page 15

OPTIONAL HEATER COMPONENTS

Drawing No.	Part No.	Description	QH241-B0Z	QH301-B0Z	QH361-B0Z	QH421-B0Z	QH481-B0Z	QH241-B06	QH301-B06	QH361-B06	QH421-B06	QH481-B06	QH241LB06	QH301LB06	QH361LB06	QH421LB06	QH481LB06	QH241LB09	QH301LB09	QH361LB09	QH421LB09	QH481LB09	
1	3000-1044	Wire Set P2	X	X	X	X	X	X	X	X	X	X	X	X	X	X	X	X	X	X	X	X	X
2	8201-048	Relay																					
3	3000-1043	Wire Set P1	X	X	X	X	X	X	X	X	X	X	X	X	X	X	X	X	X	X	X	X	X
4	8607-022	Terminal Block	X	X	X	X	X	X	X	X	X	X	X	X	X	X	X	X	X	X	X	X	X
5	116-190	Box Partition	X	X	X	X	X	X	X	X	X	X	X	X	X	X	X	X	X	X	X	X	X
6	8611-006	Ground Lug	X	X	X	X	X	X	X	X	X	X	X	X	X	X	X	X	X	X	X	X	X
7	126-267	Circuit Breaker Base	X	X	X	X	X	X	X	X	X	X	X	X	X	X	X	X	X	X	X	X	X
11	8615-054	Circuit Breaker 3 Pole 20A	X																				
11	8615-051	Circuit Breaker 3 Pole 25A																					
11	8615-052	Circuit Breaker 3 Pole 30A																					
11	8615-042	Circuit Breaker 3 Pole 35A																					
11	8615-043	Circuit Breaker 3 Pole 40A																					
11	8615-044	Circuit Breaker 3 Pole 45A																					
11	8615-045	Circuit Breaker 3 Pole 50A																					
11	8615-046	Circuit Breaker 3 Pole 60A																					
12	8401-006	Contactors 2 Pole 20A																					
13	8402-100	Limits																					
14	8611-026	Snap Bushings 1-3/4																					
15	116-189	Heater Box																					
16	8604-105	Heat Strip 6 KW																					
16	8604-106	Heat Strip 9 KW																					
17	116-191	Heat Strip Wrapper																					
NS	132-145	Heat Strip Cover																					
NS	4101-200	Wiring Diagram																					
NS	4101-201	Wiring Diagram																					
NS	4101-202	Wiring Diagram																					
NS	4101-203	Wiring Diagram																					
NS	4101-204	Wiring Diagram																					

NS Not Shown

This Table references Exploded View on Page 15

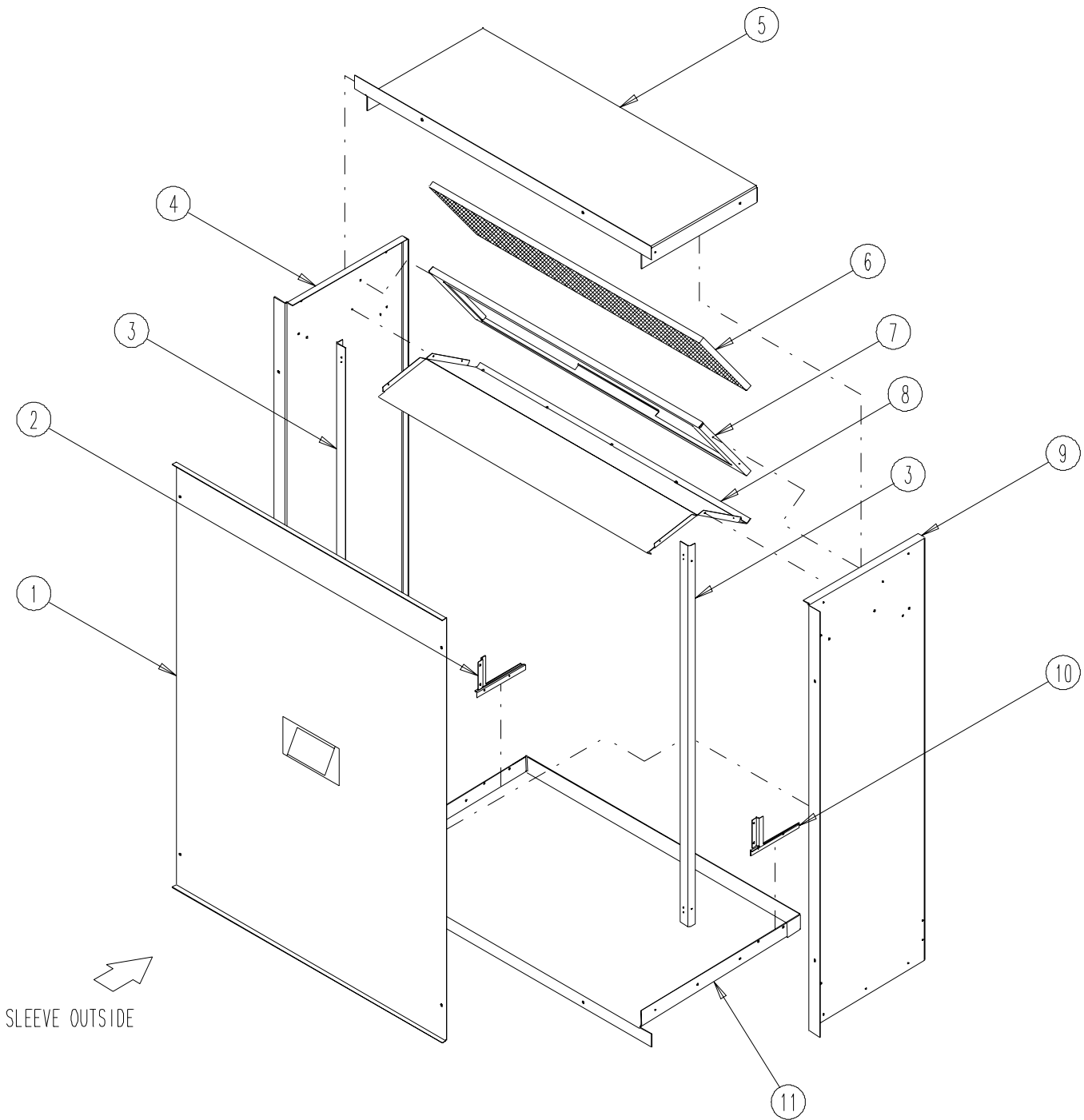
OPTIONAL HEATER COMPONENTS

Drawing No.	Part No.	Description	QH241-C02	QH301-C02	QH361-C02	QH421-C02	QH481-C02	QH241-C06	QH301-C06	QH361-C06	QH421-C06	QH481-C06	QH241-C09	QH301-C09	QH361-C09	QH421-C09	QH481-C09
1	3000-1044	Wire Set P2	X					X					X				
2	8201-048	Relay						X					X				
3	3000-1043	Wire Set P1	X					X					X				
4	8607-022	Terminal Block	X					X					X				
5	116-190	Box Partition	X					X					X				
6	8611-006	Ground Lug	X					X					X				
9	126-269	Pull Disconnect Base	X					X					X				
10	8615-053	Pull Disconnect	X					X					X				
12	8401-002	Contacto 3 Pole 25A						X					X				
13	8402-100	Limits						2					4				
14	8611-026	Snap Bushings 1-3/4		X				X					X				
15	116-189	Heater Box		X				X					X				
16	8604-107	Heat Strip 6 KW 480V						X					2				
16	8604-108	Heat Strip 9 KW 480V						X					X				
17	116-191	Heat Strip Wrapper		X				X					X				
NS	132-145	Heat Strip Cover		X				X					X				
NS	4101-300	Wiring Diagram	X														
NS	4101-301	Wiring Diagram						X									
NS	4101-302	Wiring Diagram															X
NS	4101-303	Wiring Diagram											X				
NS	4101-304	Wiring Diagram												X			

NS Not Shown

This Table references Exploded View on Page 15

WALL SLEEVE CABINET COMPONENTS



SEXP-281

This Exploded View references Table on pages 20

WALL SLEEVE CABINET COMPONENTS

Drawing No.	Part No.	Description	QWS42	QWS42-16	QWS48
1	142-056	Cover	X	X	
1	142-068	Cover			X
2	136Y361	Left Side Seal Angle	X	X	X
3	104-988	Angle	2	2	2
4	110Y045	Left Side	X		X
4	110Y048	Left Side		X	
5	110-047	Top	X		
5	110-050	Top		X	
5	110-056	Top			X
6	7003-044	Mist Eliminator	X	X	X
7	130-120	Filter Tray	X	X	
7	130-128	Filter Tray			X
8	120-305	Partition	X		
8	120-309	Partition		X	
8	120-322	Partition			X
9	110X045	Right Side	X		X
9	110X048	Right Side		X	
10	136X361	Right Side Seal Angle	X	X	
10	136-404	Right Side Seal Angle			X
11	111-046	Base	X		
11	111-049	Base		X	
11	111-055	Base			X

This Table references Exploded View on Page 19