

REPLACEMENT PARTS MANUAL

MASTER CONTROLLER MODEL MC91A, MC91AE

Manual 2110-654

Revision A

Date 07-09-92

Supersedes 01-10-92

* GENERAL NOTES *

*Revised and/or additional pages may be issued from time to time.
*A complete and current manual consists of pages dated as shown in the following index.

** INDEX **

<u>Page Description</u>	<u>Page</u>	<u>Date</u>	<u>Supersedes</u>
Functional and Cabinet Components--Exploded View	1	01-10-92	
" " " " --Usage List	2	07-09-92	01-10-92

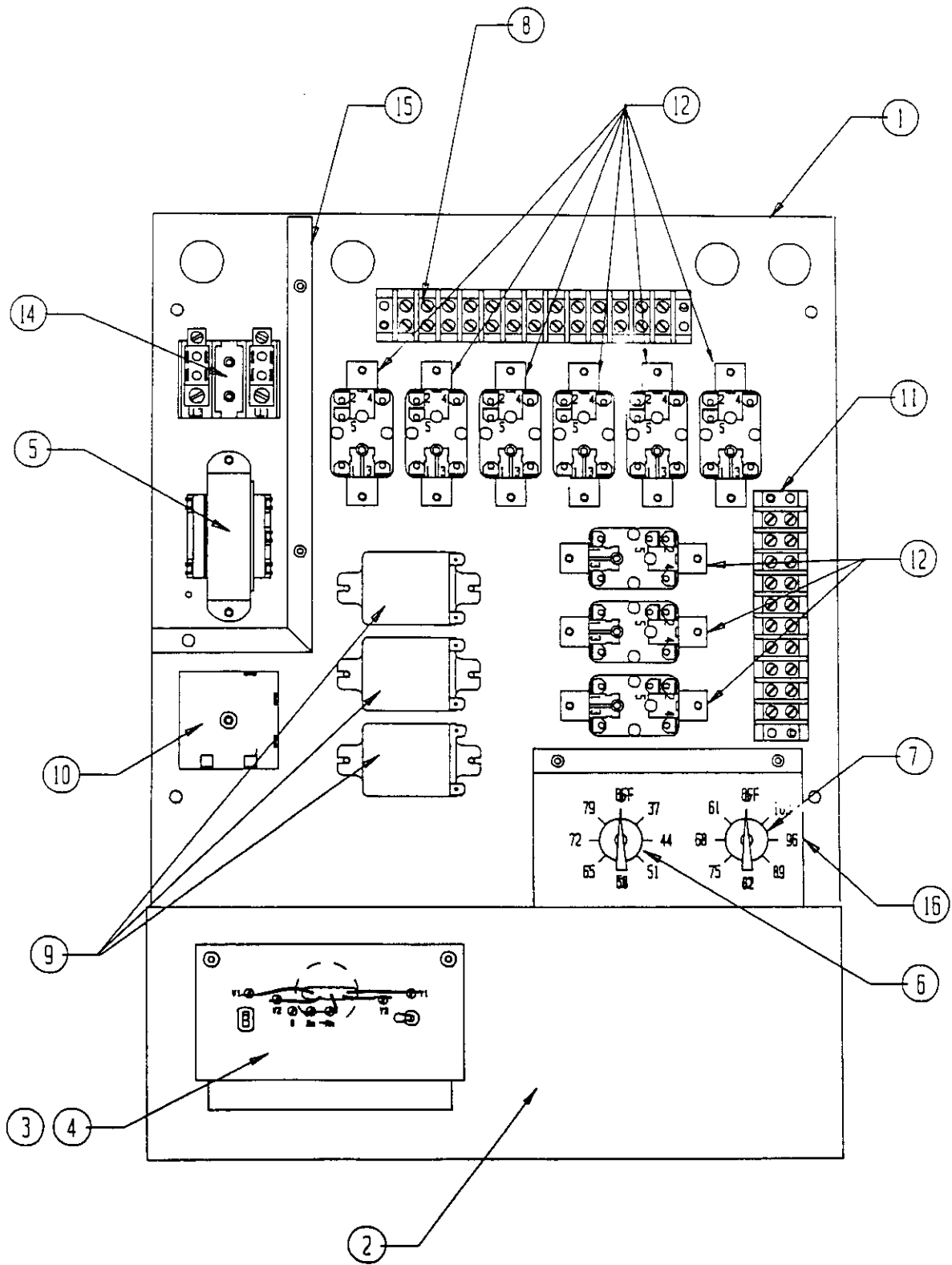
*** IMPORTANT ***

Contact the installing and/or local Bard distributor for all parts requirements. Make sure you have the complete model and serial number available from the unit rating plate.

BARD MANUFACTURING COMPANY

BRYAN, OHIO 43506

FUNCTIONAL AND CABINET COMPONENTS



Date: 01-10-92
Supersedes:

FUNCTIONAL AND CABINET COMPONENTS

Dwg. No.	Part No.	Description	MC91A	MC91AE
1	126-209	Base	X	X
2	140-186	Thermostat Mounting Base	X	X
3	8404-013	Subbase	X	X
4	8403-031	Thermostat	X	X
5	8407-041	Transformer	X	X
6	8408-021	Low Alarm Thermostat	X	X
7	8408-022	High Alarm Thermostat	X	X
8	8607-010	Terminal Strip	X	X
9	8201-048	Switching Relay	2	2
10	8612-014	24 Hour Recycle Timer	X	X
11	8607-011	Terminal Strip		X
11	8607-010	Terminal Strip	X	
12	8201-062	Relays	X	X
14	8607-013	Terminal Block	X	X
15	116-136	High Voltage Box	X	X
16	140-187	Mounting Bracket	X	X
	132-108	Control Cover	X	X
	4093-111	Wiring Diagram	X	
	4093-112	Wiring Diagram		X

Date: 07-09-92
 Supersedes: 01-10-92

