
REPLACEMENT PARTS MANUAL

MASTER CONTROLLER

Model:

MC95HAE-1

General Notes

- Revised and/or additional pages may be issued from time to time.
- A complete and current manual consists of pages shown in the following contents section.

Contents

| Description | Page |
|-----------------------------------|------|
| Functional and Cabinet Components | |
| ♦ Exploded View | 1 |
| ♦ Usage List | 2 |

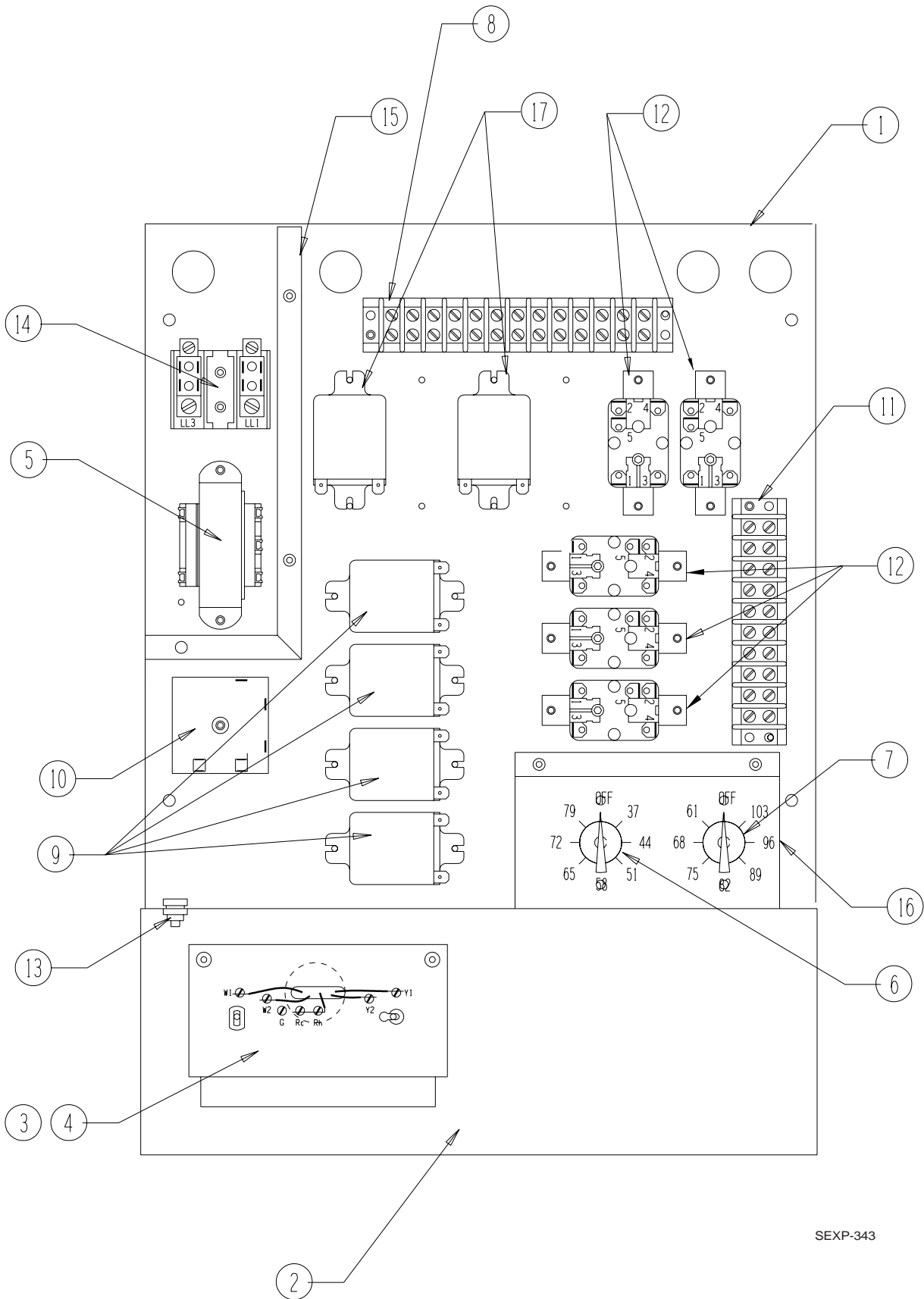


Climate Control Solutions

Bard Manufacturing Company, Inc.
Bryan, Ohio 43506
Since 1914...Moving ahead, just as planned.

Manual: 2110-675A
Supersedes: 2110-675
File: Tab 19
Date: 05-20-02

FUNCTIONAL and CABINET COMPONENTS



SEXP-343

FUNCTIONAL and CABINET COMPONENTS

| Drawing No. | Part No. | Description | MC95HAE-1 |
|----------------|-----------|---------------------------------|-----------|
| 1 | 127-209-X | Base | X |
| 2 | 141-186-X | Thermostat Mounting Base | X |
| 3 | 8404-013 | Subbase | X |
| 4 | 8403-031 | Thermostat | X |
| 5 | 8407-041 | Transformer | X |
| 6 | 8408-021 | Low Alarm Thermostat | X |
| 7 | 8408-022 | High Alarm Thermostat | X |
| 8 | 8607-010 | Terminal Strip (13 position) | X |
| 9 | 8201-048 | Switching Relay | 4 |
| 10 | 8612-014 | 24 Hour and 7 Day Recycle Timer | X |
| 11 | 8607-011 | Terminal Strip (10 position) | X |
| 12 | 8201-062 | Relays | 5 |
| 13 | 8406-082 | Timer Speedup Switch | X |
| 14 | 8604-013 | Terminal Block | X |
| 15 | 117-136-X | High Voltage Box | X |
| 16 | 141-187-X | Mounting Bracket | X |
| 17 | 8201-071 | Switching Relay | 2 |
| NS | 4093-133 | Wiring Diagram | X |

NS = Not Shown