
REPLACEMENT PARTS MANUAL

ECONOMIZER MODEL: EIFM-1B

General Notes

- Revised and/or additional pages may be issued from time to time.
- A complete and current manual consists of pages shown in the following contents section.

Important

- Contact the installing and/or local Bard distributor for all parts requirements. Make sure you have the complete model and serial number available from the unit rating plates.

Contents

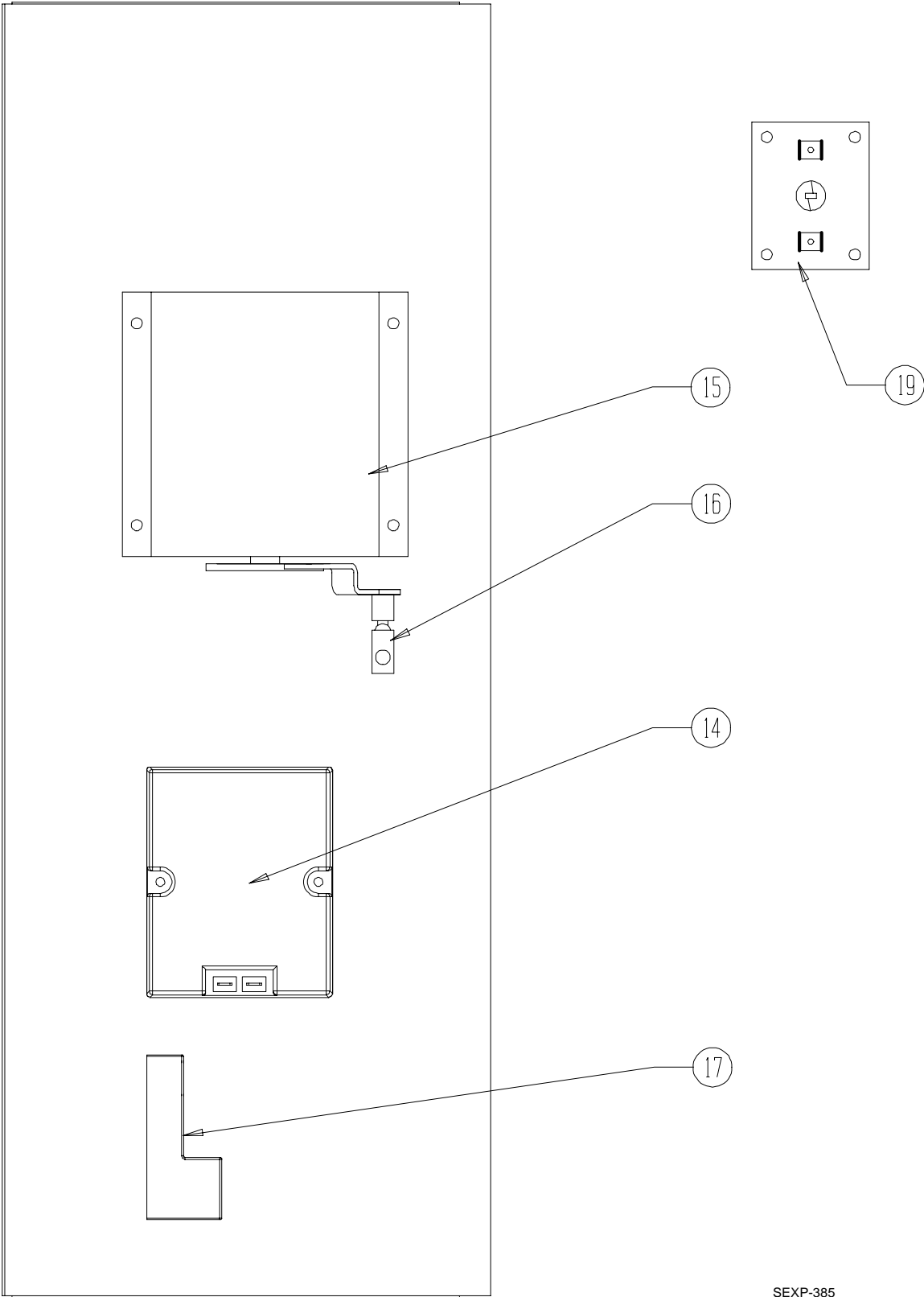
Description	Page
Functional and Cabinet Components	
♦ Exploded View	1
♦ Exploded View	2
♦ Usage List	3



BARD MANUFACTURING COMPANY
Bryan, Ohio 43506
Since 1914...Moving ahead, just as planned.

Manual: 2110-679
Supersedes:
File Tab 19
Date: 07-25-01

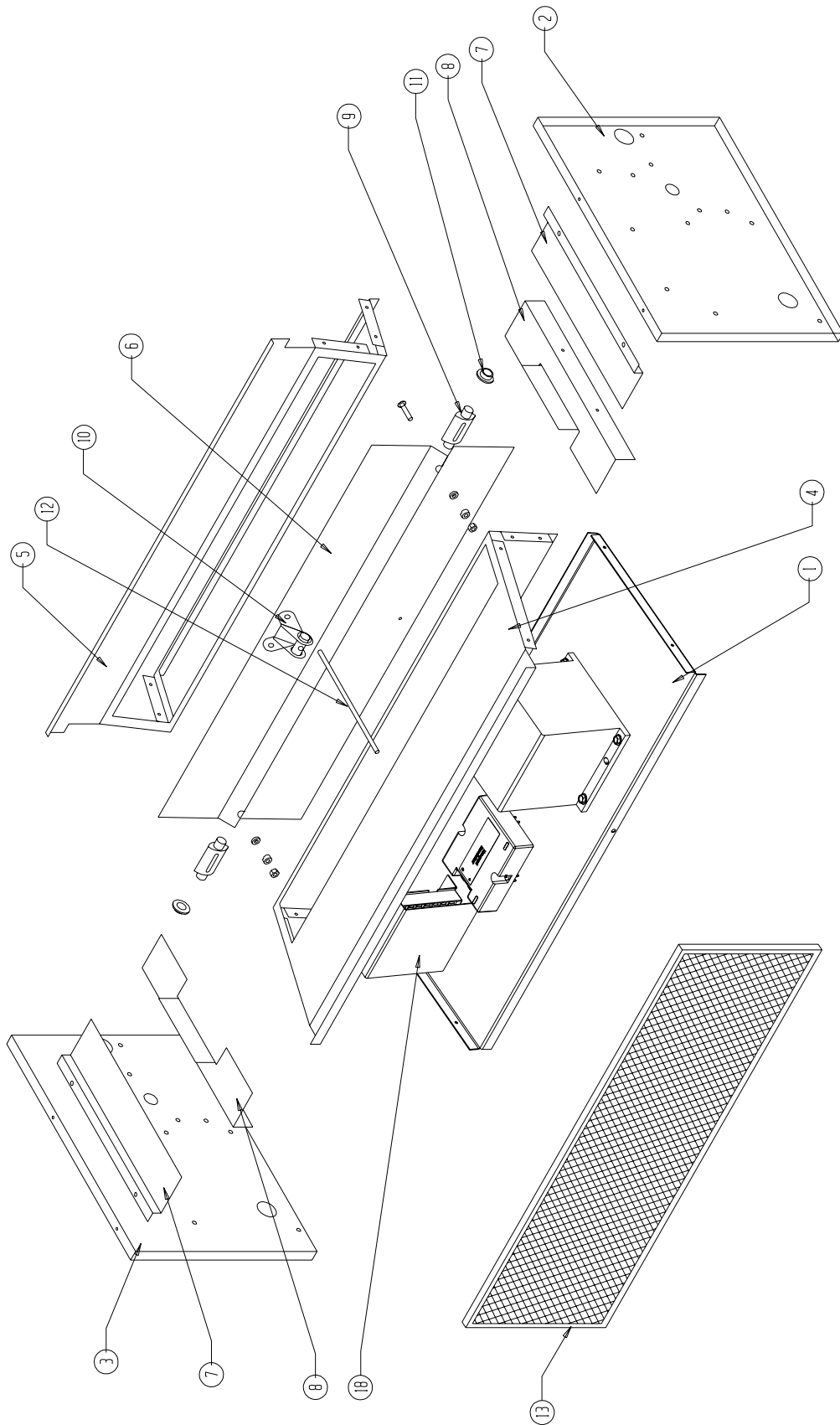
FUNCTIONAL and CABINET COPONENTS



SEXP-385

FUNCTIONAL and CABINET COPONENTS

SEXP-386



FUNCTIONAL and CABINET COPONENTS

Drawing No.	Part No.	Description	EIFM-1B
1	127-231	Base	X
2	100X281	Right End	X
3	100Y281	Left End	X
4	137-270	Front Partition	X
5	137-271	Back Partition	X
6	139-089	Damper Blade	X
7	113-187	Top Filter Bracket	2
8	113-188	Bottom Filter Bracket	2
9	8602-038	Damper Blade Pin	2
10	8602-040	Bracket	X
11	8602-039	Bronze Bushing	2
12	8602-042	Rod	X
13	7003-039	Mist Eliminator	X
14	8602-046	Enthalpy Sensor	X
15	8602-037	Damper Motor	X
16	8602-008	Ball Joint	X
17	8602-053	Enthalpy Control	X
18	134-168	Wire Shield	X
19	8602-018	Thermistor	X
NS	4096-137	Wire Diagram	X

NS = Not Shown