
REPLACEMENT PARTS MANUAL

ECONOMIZER

MODELS: **EIFM-2B**
EIFM-3C
EIFM-5C
WGSEIFM-5

General Notes

- Revised and/or additional pages may be issued from time to time.
- A complete and current manual consists of pages shown in the following contents section.

Important

- Contact the installing and/or local distributor for all parts requirements. Make sure you have the complete model and serial number available from the unit rating plates.

Contents

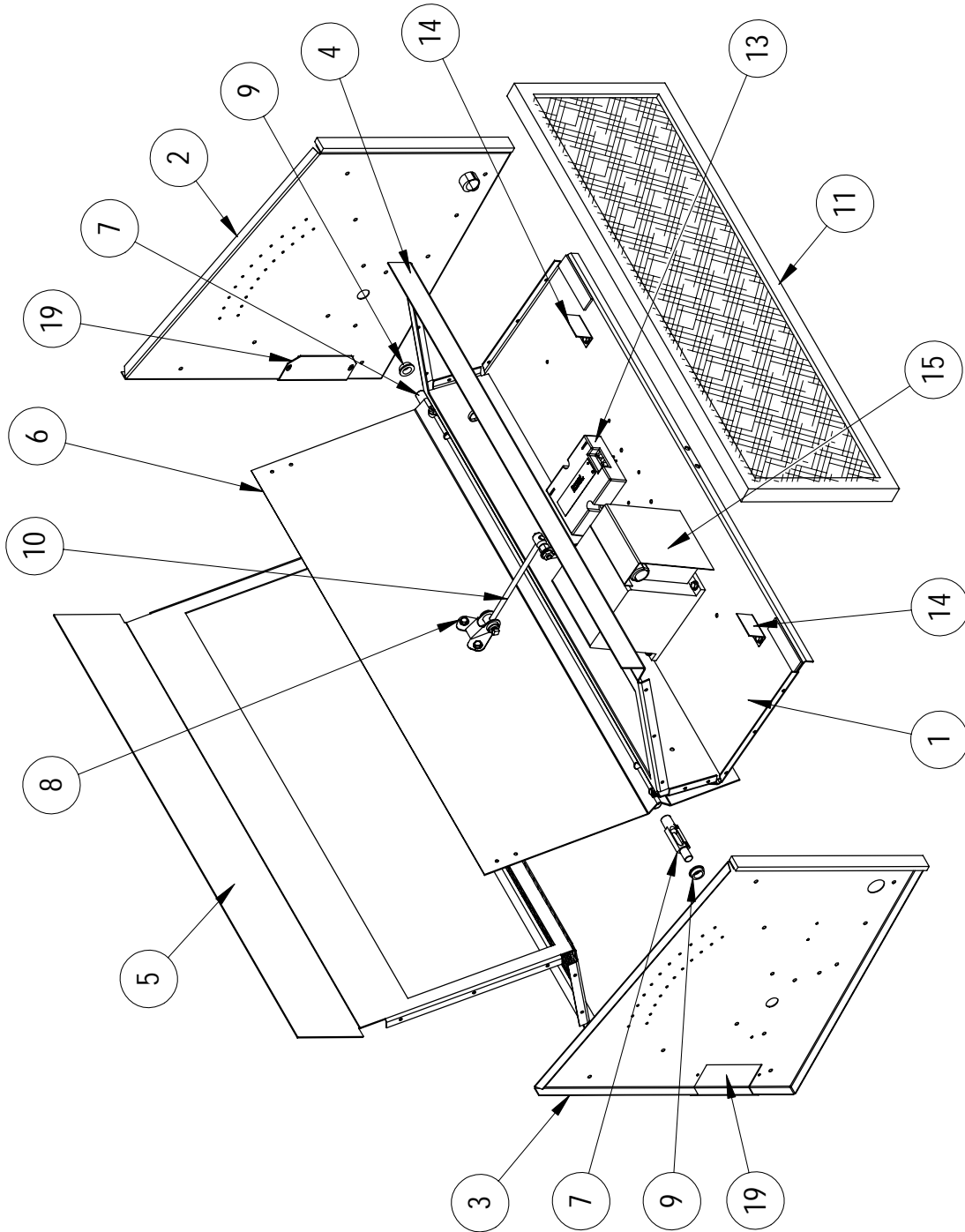
Description	Page
Functional and Cabinet Components	
♦ Exploded View	2
♦ Exploded View	3
♦ Exploded View	4
♦ Usage List	5

Manual: 2110-683C
Supersedes: 2110-683B
File: Vol. III Tab 19
Date: 02-24-11

FUNCTIONAL and CABINET COMPONENTS

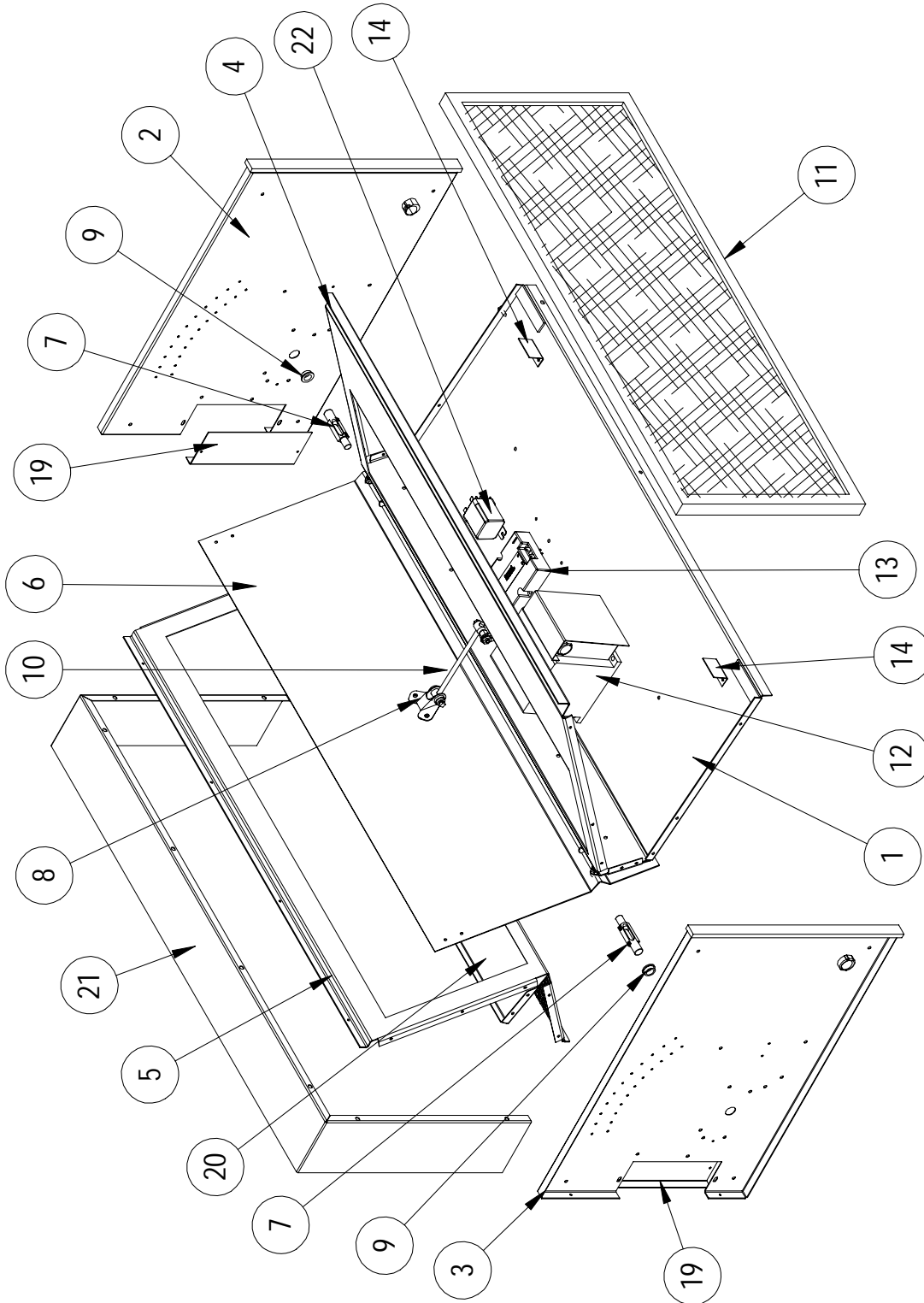
SEXP-444

EIFM-3C



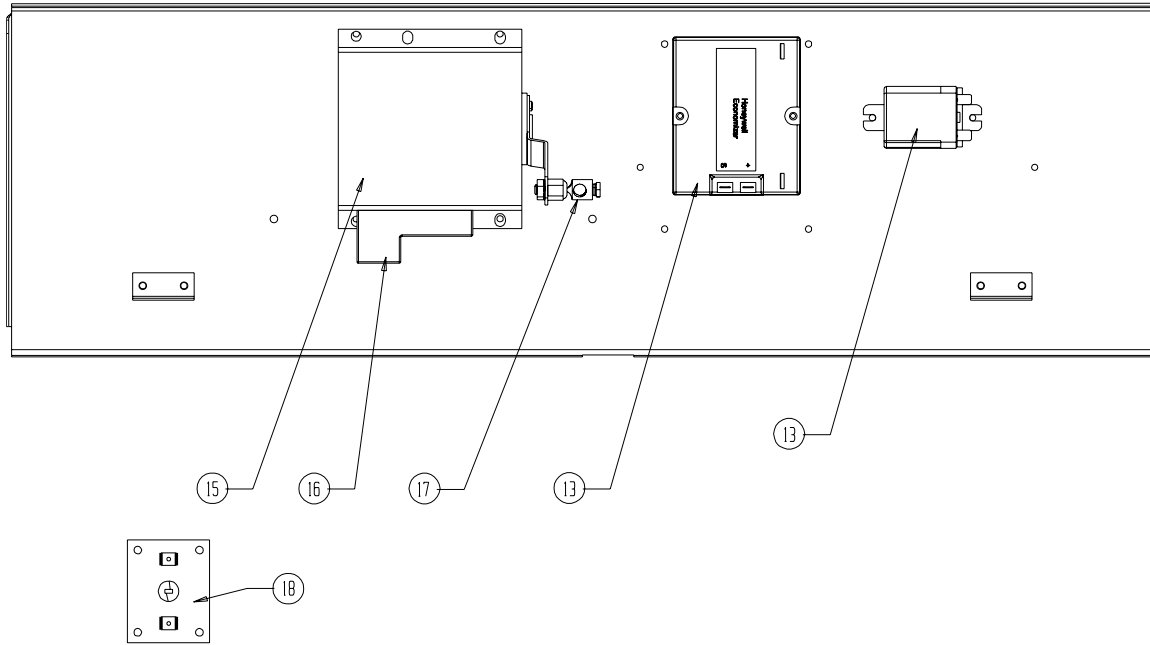
FUNCTIONAL and CABINET COMPONENTS

EIFM-5C



SEXP-443 A

FUNCTIONAL and CABINET COMPONENTS



SEXP-186 A

FUNCTIONAL and CABINET COMPONENTS

Drawing No.	Part No.	Description	EIFM-2B	EIFM-3C	EIFM-5C	WGSEIFM-5
1	127-212	Base		X		
1	127-215	Base			X	X
1	127-213	Base	X			
2	100X434	Right End		X		
2	100X440	Right End			X	X
2	100X245	Right End	X			
3	100Y434	Left End		X		
3	100Y440	Left End			X	X
3	100Y245	Left End	X			
4	137-218	Front Fill			X	
4	137-178	Front Fill		X		X
4	137-187	Front Fill	X			
5	137-481	Return Fill			X	
5	137-484	Return Fill		X		X
5	137-188	Return Fill	X			
6	139-180	Damper Blade			X	
6	139-181	Damper Blade		X		X
6	139-054	Damper Blade	X			
7	8602-038	Damper Blade Pin	2	2	2	2
8	8602-040	Bracket	X	X	X	X
9	8602-039	Bronze Bushing	2	2	2	2
10	8602-042	Rod	X	X	X	X
11	7003-033	Mist Eliminator		X		
11	7003-035	Mist Eliminator			X	X
11	7003-034	Mist Eliminator	X			
12	134-168	Shield	X	X	X	X
13	8602-046	Enthalpy Sensor	X	X	X	X
14	131-095	Filter Stop	2	2	2	2
15	8602-037	Damper Motor	X	X	X	X
16	8602-053	Economizer Logic Control	X	X	X	X
17	8602-008	Ball Joint	X	X	X	X
18	8602-018	Thermistor	X	X	X	X
19	137-485	Side Fill Plate		2		
19	137-486	Side Fill Plate			2	2
20	137-483	Exhaust Partition			X	X
21	166-025	Extension Sleeve				X
22	8201-048	DPDT Relay				X
NS	4056-135	Wiring Diagram	X	X	X	
NS	4056-197	Wiring Diagram				X

NS = Not Shown