

---

# REPLACEMENT PARTS MANUAL

# COMMERCIAL ROOM VENTILATOR

**MODEL:  
CRVS-1**

---

## General Notes

- Revised and/or additional pages may be issued from time to time.
- A complete and current manual consists of pages shown in the following contents section.

## Important

- Contact the installing and/or local Bard distributor for all parts requirements. Make sure you have the complete model and serial number available from the unit rating plates.

## Contents

Description	Page
Functional and Cabinet Components	
◆ Exploded View .....	2
◆ Exploded View .....	3
◆ Usage List.....	4



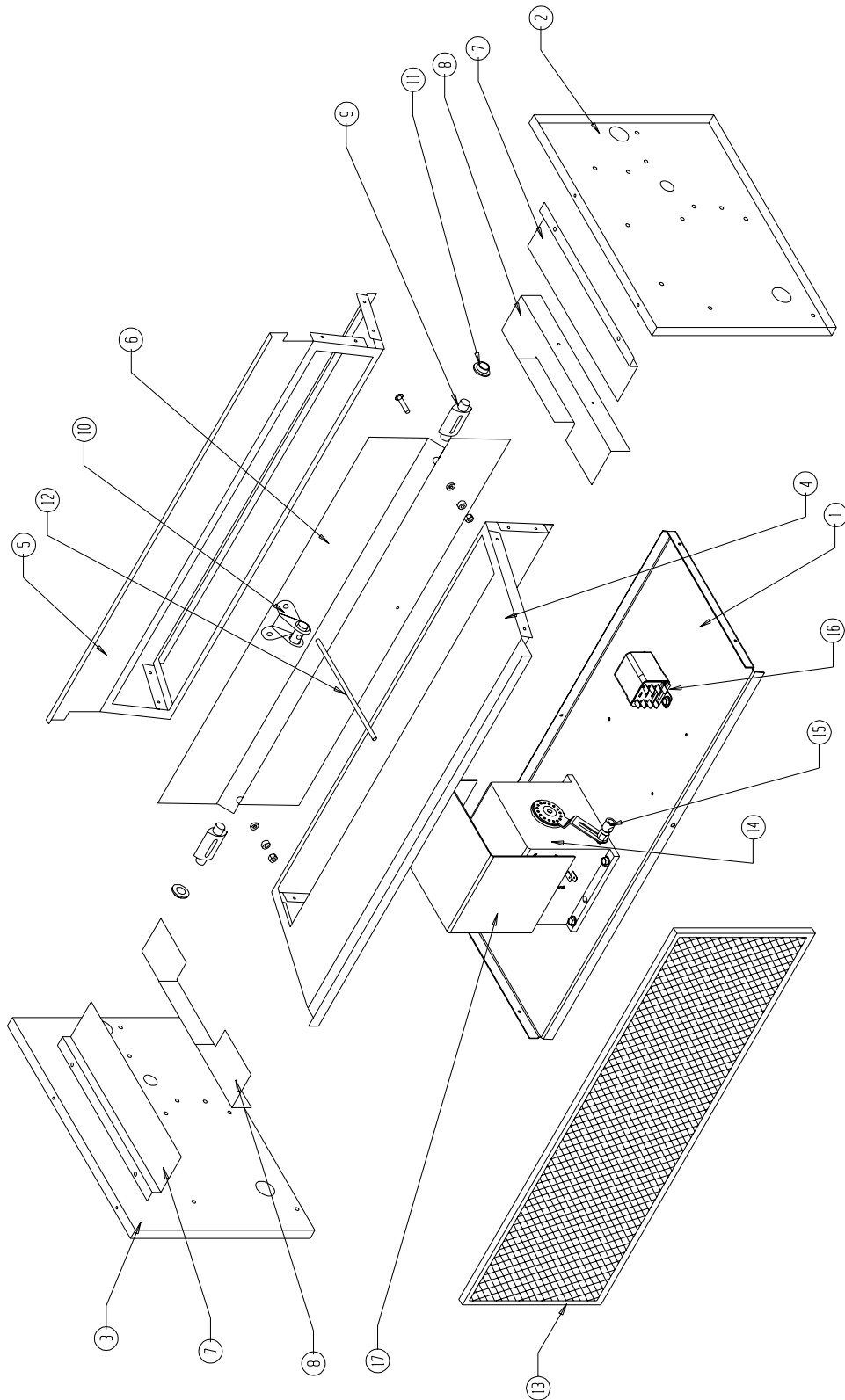
Bard Manufacturing Company, Inc.  
Bryan, Ohio 43506  
*Since 1914....Moving ahead just as planned.*

Manual : 2110-693  
Supersedes: **NEW**  
File: Volume III Tab 16  
Date: 09-30-09

---

# FUNCTIONAL and CABINET COPONENTS

SEXP-548



## FUNCTIONAL and CABINET COPONENTS

---

Drawing No.	Part No.	Description	CRVS-1
1	127-231	Base	X
2	100X281	Right End	X
3	100Y281	Left End	X
4	137-270	Front Partition	X
5	137-271	Back Partition	X
6	139-089	Damper Blade	X
7	113-187	Top Filter Bracket	2
8	113-188	Bottom Filter Bracket	2
9	8602-038	Damper Blade Pin	2
10	8602-040	Bracket	X
11	8602-039	Bronze Bushing	2
12	8602-042	Rod	X
13	7003-039	Mist Eliminator	X
14	8602-020	Damper Motor	X
15	8602-008	Ball Joint	X
16	8201-048	Relay	X
17	134-249	Wire Shield	X
NS	4056-189	Wiring Diagram	X

NS = Not Shown