

# REPLACEMENT PARTS MANUAL

## WATER SOURCE HEAT PUMP MODELS WPV30B, WPV36B

Manual 2110-726

Revision --

Date 7-11-89

Supersedes

\*\*\*\*\*  
\* GENERAL NOTES \*  
\*\*\*\*\*

\*Revised and/or additional pages may be issued from time to time.  
\*A complete and current manual consists of pages dated as shown in the following index.

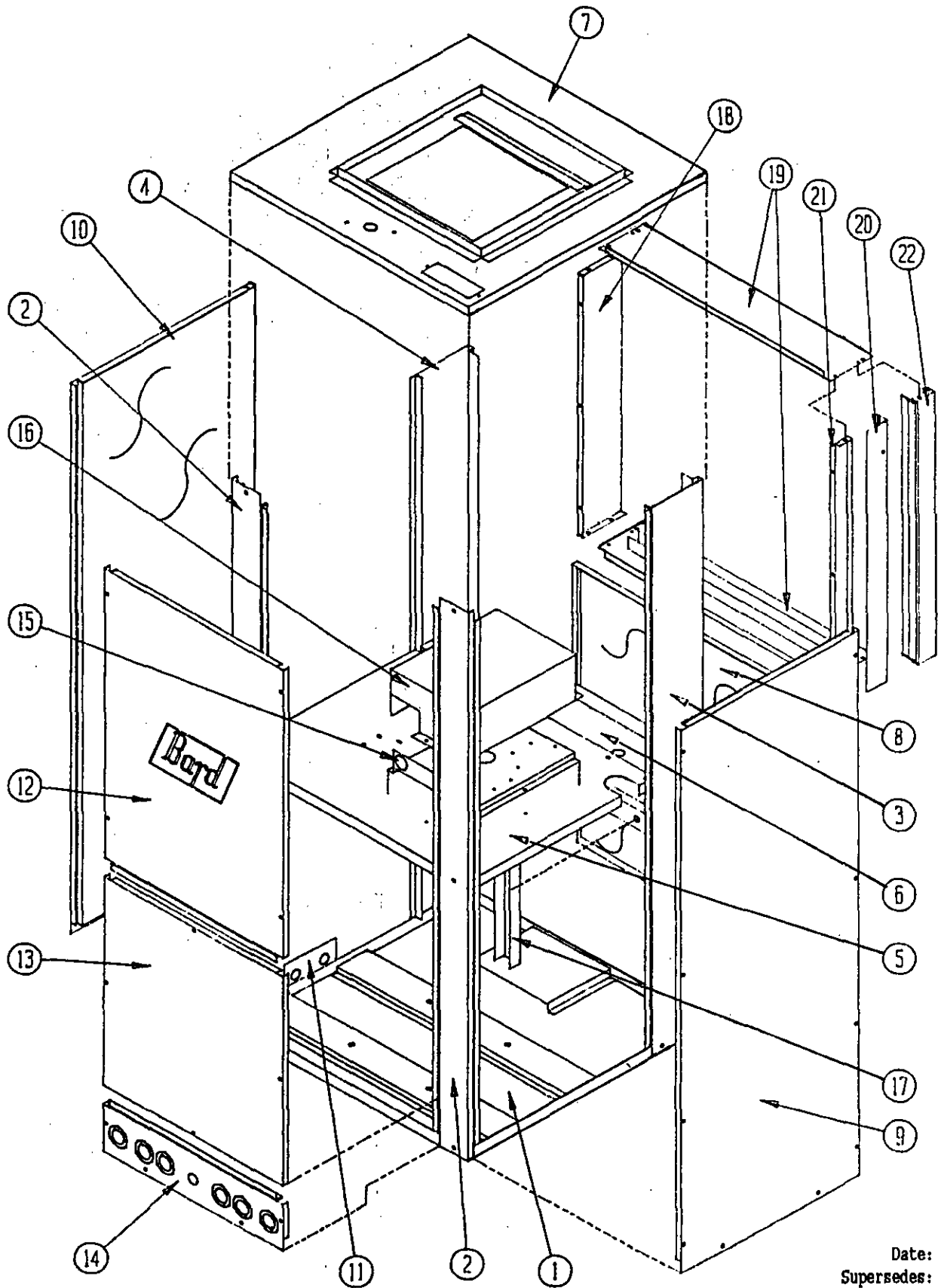
\*\*\*\*\*  
\*\* INDEX \*\*  
\*\*\*\*\*

<u>Page Description</u>	<u>Page</u>	<u>Date</u>	<u>Supersedes</u>
Cabinet Components--Exploded View	1	7-11-89	
" " --Usage List	2	7-11-89	
Functional Components--Exploded View	3	7-11-89	
" " --Usage List	4	7-11-89	
Control Panel--Layout View	5	7-11-89	
" " --Usage List	6	7-11-89	

\*\*\*\*\*  
\*\*\* IMPORTANT \*\*\*  
\*\*\*\*\*

Contact the installing and/or local Bard distributor for all parts requirements. Make sure you have the complete model and serial number available from the unit rating plate.

CABINET COMPONENTS



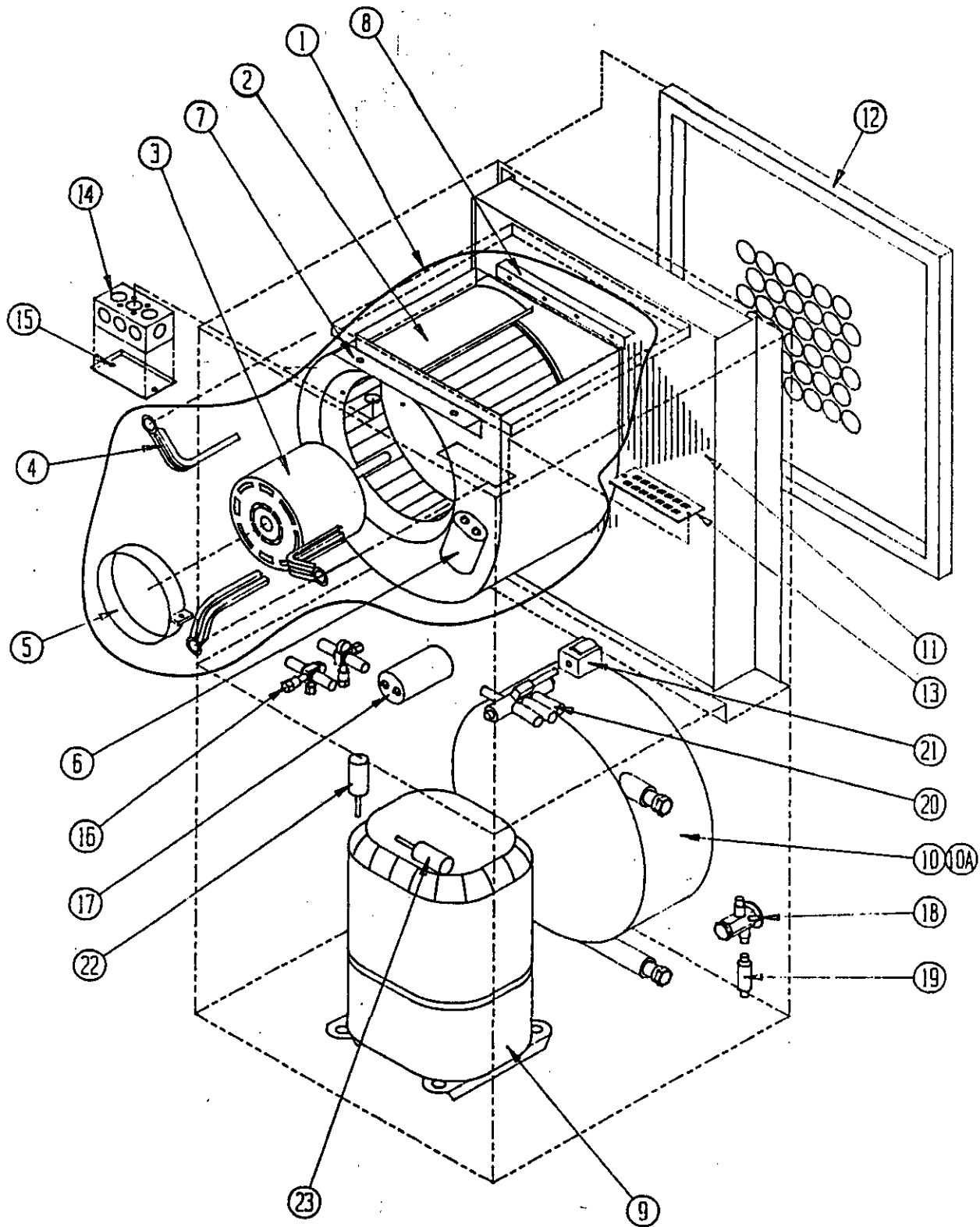
Date: 7-11-85  
Supersedes:

CABINET COMPONENTS

Dwg. No.	Part No.	Description	WPV30B	WPV36B
1	127-145	Base Weld Assembly	X	X
2	548-003	Front Corner Assembly	(2)	(2)
3	549X001	Right Rear Corner Assembly	X	X
4	549Y001	Left Rear Corner Assembly	X	X
5	520-118	Partition Assembly	X	X
6	523-004	Water Pan Assembly	X	X
7	507-110	Top Assembly	X	X
8	509-072	Lower Back Assembly	X	X
9	552-006	Right Access Assembly	X	X
10	552-157	Left Access Assembly	X	X
11	156-022	Tubing Entrance Assembly	X	X
12	514-004	Top Front Assembly	X	X
13	514-005	Bottom Front Assembly	X	X
14	556-020	Water Entrance Panel Assembly	X	X
15	116-114	Control Panel	X	X
16	132-006	Control Panel Cover	X	X
17	140-143	Support--Water Coil Hold Down	X	X
18	130-008	Filter Rack Side	X	X
19	131-006	Filter Rack Top and Bottom Weld Assembly	X	X
20	130-005	Filter Rack Door	X	X
21	130-009	Filter Rack Side	(2)	(2)
22	131-007	Filter Rack Side Weld Assembly	X	X

Date: 7-11-89  
Supersedes:

FUNCTIONAL COMPONENTS



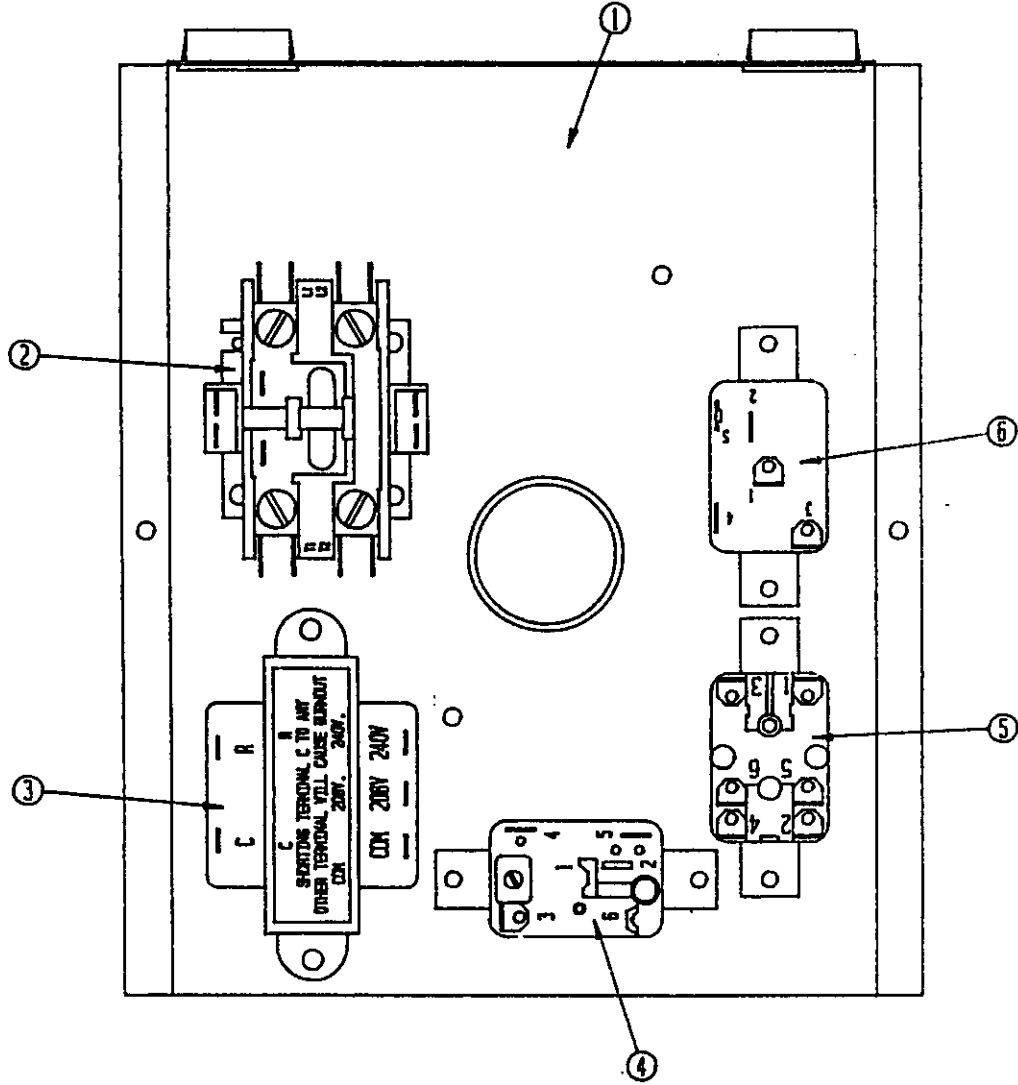
Date: 7-11-89  
Supersedes:

FUNCTIONAL COMPONENTS

	Part No.	Description	WPV30B	WPV36B
1	900-048	Blower Assembly Complete	X	X
2	5152-046	Blower Housing with Wheel and Diffuser	X	X
3	8105-010	Motor 1/3 h.p.	X	X
4	8200-036	Motor Mount Arm with Grommets	3	3
5	8200-033	Motor Mount Band	X	X
6	8552-002	Capacitor 5 MFD--370 V--1-1/4" Oval	X	X
7	104-503	Angle--Front	X	X
8	104-504	Angle--Rear	X	X
9	8000-052	Compressor CRG3-0250-PFV-270		X
9	8000-101	Compressor 703283-02-1074	X	
10	917-0018	Water Coil Assembly w/Insulation	X	
10	917-0017	Water Coil Assembly w/Insulation		X
10A	5020-026	Insulation Jacket Only	X	X
11	5060-0	Evaporator Coil	X	X
12	7004-0	Filter 22x22x1	X	X
13	8607-019	Terminal Board 24V	X	X
14	8614-002	Outlet Box 2" x 4"	X	X
15	8614-003	Blank Cover 2" x 4"	X	X
16	5651-055	Full Flow Valve 3/8"	2	
16	5651-056	Full Flow Valve 1/2"		2
17	8552-045	Capacitor 30/370 1-3/4" R	X	
17	8552-035	Capacitor 40/370V 2" round		X
18	5651-066	Expansion Valve	X	X
19	5210-010	Strainer	(2)	(2)
20	5650-005	Reversing Valve	X	
20	5650-009	Reversing Valve		X
21	5650-008	Reversing Valve Solenoid	X	X
22	8406-045	Low Pressure Switch	X	X
23	8406-016	High Pressure Switch	X	X
OPTIONAL ITEMS				
	8603-006	Solenoid Valve 24V	X	X
	8603-010	Constant Flow Valve 4 GPM	X	
	8603-011	Constant Flow Valve 5 GPM		X
	8604-080	Duct Heater 5KW	X	X
	8604-081	Duct Heater 9.8KW	X	X
	8604-082	Duct Heater 14.7KW	X	X
	8604-083	Duct Heater 19.2KW	X	X

Date: 7-11-89  
Supersedes:

CONTROL PANEL



Date: 7-11-8  
Supersedes:

## CONTROL PANEL

Item	Part No.	Description	WPV30B	WPV36B
1	116-114	Control Panel	X	X
2	8401-007	Compressor Contactor	X	X
3	8407-035	Transformer	X	X
4	8201-034	Lockout Relay	X	X
5	8201-015	Emergency Heat Relay	X	X
6	8201-008	Blower Relay	X	X

Date: 7-11-89  
Supersedes:

