

---

# Replacement Parts Manual

# WAG SERIES COMBINATION GAS / ELECTRICS

Models:  
**WAG30D WAG36D  
WAG40D**

---

## General Notes

- Revised and/or additional pages may be issued from time to time.
- A complete and current manual consists of pages shown in the following contents section.

## Important

- Contact the installing and/or local Bard distributor for all parts requirements. Make sure you have the complete model and serial number available from the unit rating plate.

## Contents

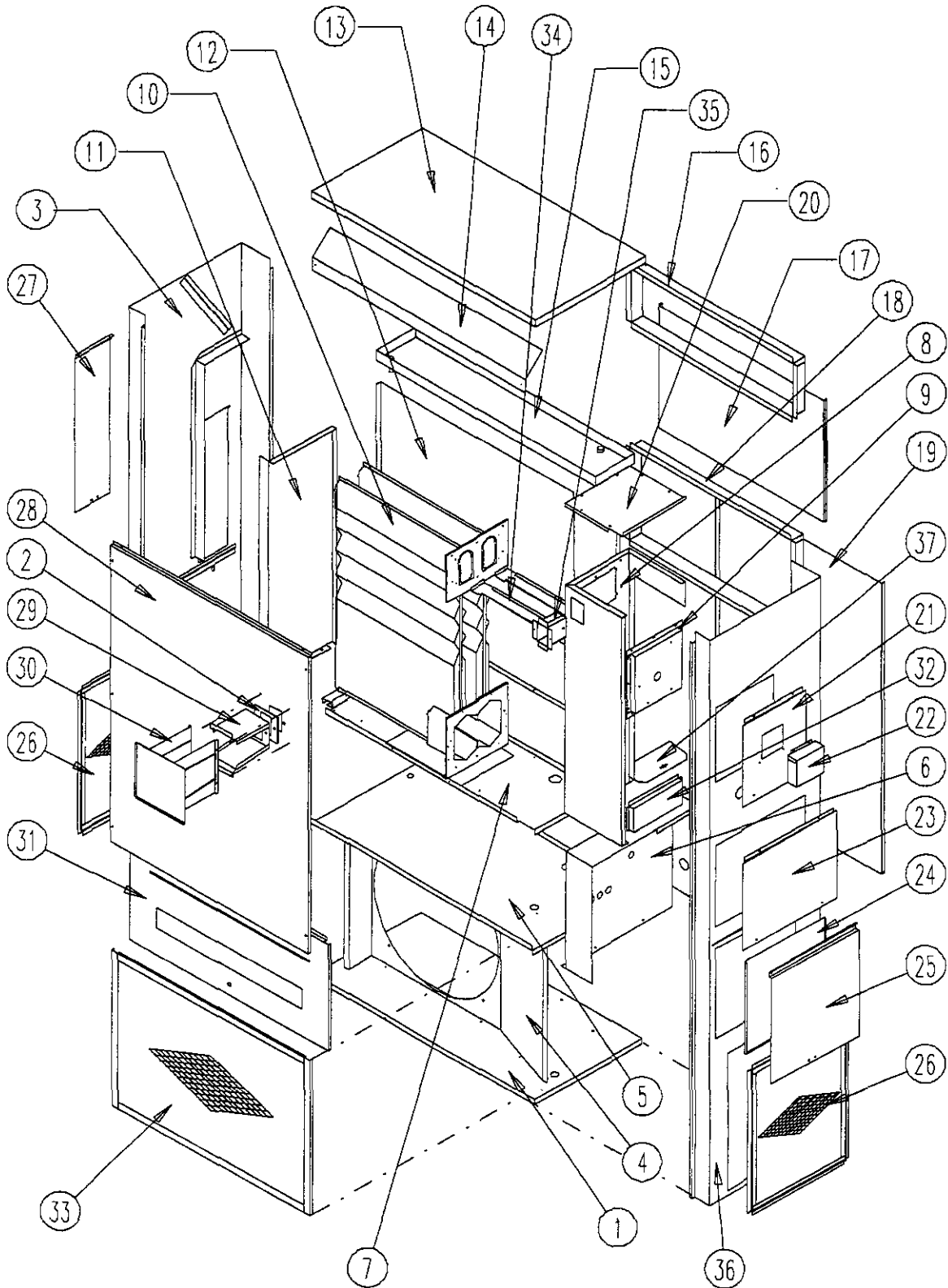
Description	Page
<b>Cabinet Components</b>	
• Exploded View .....	1
• Usage List U.S. Models .....	2
• Usage List Canadian Models .....	3
• Blank Page .....	4
<b>Functional Components</b>	
• Exploded View .....	5
• Usage List U.S. Models .....	6
• Usage List Canadian Models .....	7
• Blank Page .....	8
<b>Control Panel Components</b>	
• Layout View .....	9
• Usage List U.S. Models .....	10
• Usage List Canadian Models .....	11



BARD MANUFACTURING COMPANY  
Bryan, Ohio 43506  
*Since 1914...Moving ahead, just as planned.*

Manual: 2110-802D  
Supersedes: 2110-802C  
File: Vol III Tab 20  
Date: 03-30-01

# CABINET COMPONENTS




SEXP-258

**This Exploded View referenced in Tables on Page 2 and 3**

# CABINET COMPONENTS

## U.S. Models Only

Drawing No.	Part No.	Description	WAG30D-A54C	WAG36D-A54C	WAG36D-B54C	WAG36D-C54C	WAG40D-A54C	WAG40D-B54C	WAG40D-C54C
1	127-216	Lower Base	X	X	X	X	X	X	X
2	1921- 	Vent Terminal Gasket	X	X	X	X	X	X	X
3	501-179-* (1)	Left Side Assembly	X	X	X	X	X	X	X
4	124-016	Fan Shroud	X	X	X	X	X	X	X
5	520-108	Condenser Partition	X	X	X	X	X	X	X
6	Control Panel	(See Control Panel Assembly Drawing & Parts List)							
7	127-143	Blower Base	X	X	X	X	X	X	X
8	520-110	Heat Exchanger Partition	X	X	X	X	X	X	X
9	913-0018	Flue Collector Box Assembly	X	X	X	X	X	X	X
10	171-152	Heat Exchanger Assembly	X	X	X	X	X	X	X
11	520-111	Side Partition Assembly	X	X	X	X	X	X	X
12	520-315	Vertical Partition	X	X	X	X	X	X	X
13	506-107-* (1)	Top	X	X	X	X	X	X	X
14	134-096	Air Baffle	X	X	X	X	X	X	X
15	123-067	Water Pan Assembly	X	X	X	X	X	X	X
16	111-025	Outlet Air Frame	X	X	X	X	X	X	X
17	508-056	Upper Back	X	X	X	X	X	X	X
18	111-018	Inlet Air Frame	X	X	X	X	X	X	X
19	508-069	Lower Back Assembly	X	X	X	X	X	X	X
20	506-108	Heat Exchanger Partition Top	X	X	X	X	X	X	X
21	552-138-* (1)	Induced Blower Door	X	X	X	X	X	X	X
22	135-097-* (1)	Induced Blower Hood	X	X	X	X	X	X	X
23	152-139-* (1)	Burner Door	X	X	X	X	X	X	X
24	132-096	Inner Control Cover	X	X	X		X	X	
24	132-116	Inner Control Cover				X			X
25	152-136-* (1)	Outer Control Cover	X	X	X	X	X	X	X
26	119-020-* (1)	Side Condenser Grille	X	X	X	X	X	X	X
27	552-137-* (1)	Filter Access	X	X	X	X	X	X	X
28	514-123-* (1)	Upper Front	X	X	X	X	X	X	X
29	168-106-* (1)	Inner Vent Terminal	X	X	X	X	X	X	X
30	169-107-* (1)	Outer Vent Terminal	X	X	X	X	X	X	X
31	514-080-* (1)	Lower Front	X	X	X	X	X	X	X
32	168-003	Secondary Air Baffle	X	X	X	X	X	X	X
33	119-003-* (1)	Front Condenser Grille	X	X	X	X	X	X	X
34	168-002	Flue Baffle	X	X	X	X	X	X	X
35	169-111	Flue Transition	X	X	X	X	X	X	X
36	501-178-* (1)	Right Side Assembly	X	X	X	X	X	X	X
37	140-164	Switch Support	X	X	X	X	X	X	X

(1) Exterior cabinet parts are manufactured with various color options. To insure that you receive the proper color, you must include the complete model and serial number of the unit for which parts are being ordered.

**This Table references Exploded View on Pages 1**

# CABINET COMPONENTS

## Canadian Models Only

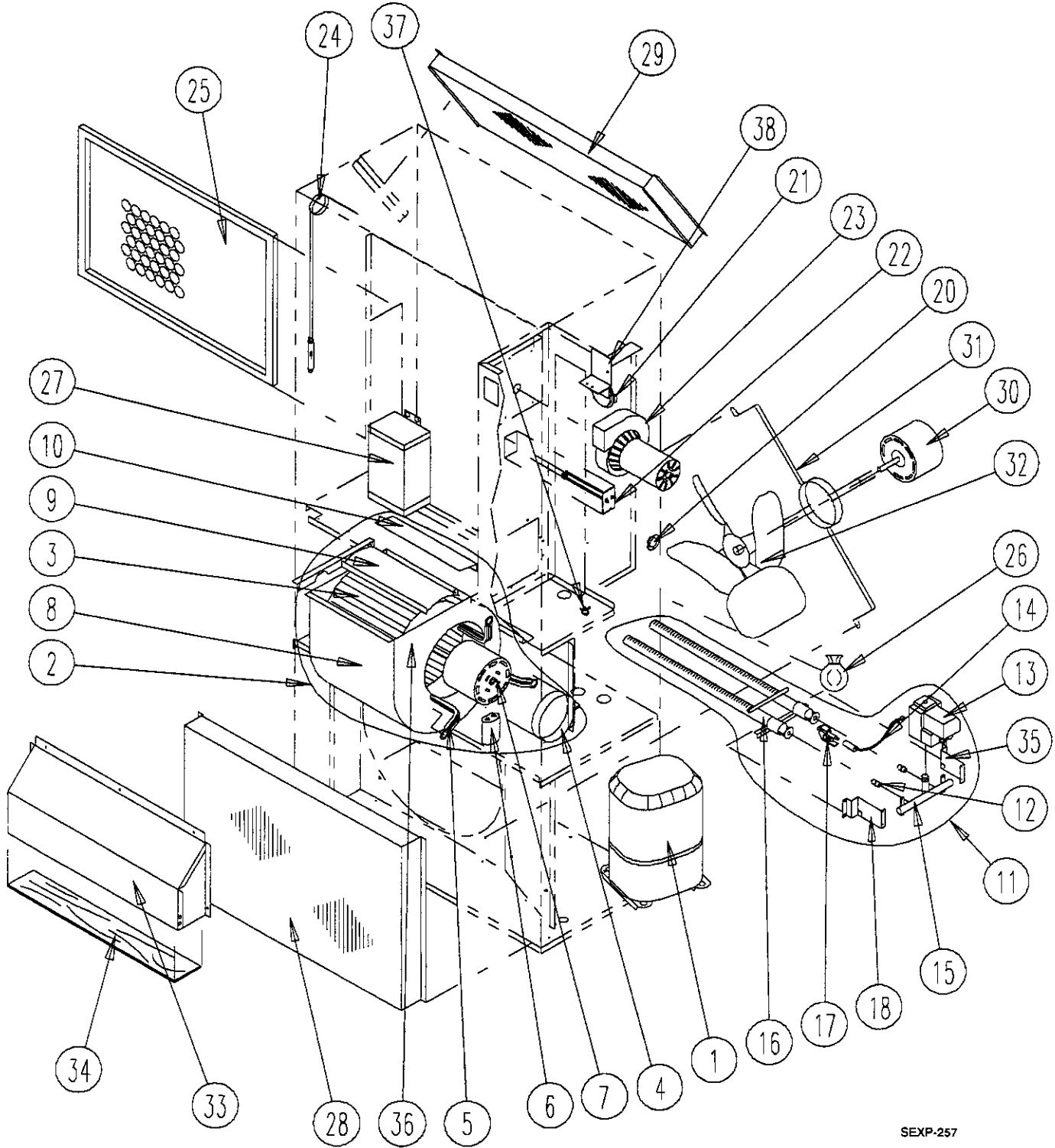
Drawing No.	Part No.	Description	WAG30D-A54CD055	WAG36D-A54CD055	WAG36D-B54CD055	WAG40D-A54CD055	WAG40D-B54CD055
1	127-216	Lower Base	X	X	X	X	X
2	1921-042	Vent Terminal Gasket	X	X	X	X	X
3	501-179-* (1)	Left Side Assembly	X	X	X	X	X
4	124-016	Fan Shroud	X	X	X	X	X
5	520-108	Condenser Partition	X	X	X	X	X
6	Control Panel	(See Control Panel Assembly Drawing & Parts List)					
7	127-143	Blower Base	X	X	X	X	X
8	520-110	Heat Exchanger Partition	X	X	X	X	X
9	913-0018	Flue Collector Box Assembly	X	X	X	X	X
10	171-152	Heat Exchanger Assembly	X	X	X	X	X
11	520-111	Side Partition Assembly	X	X	X	X	X
12	520-315	Vertical Partition	X	X	X	X	X
13	506-107-* (1)	Top	X	X	X	X	X
14	134-096	Air Baffle	X	X	X	X	X
15	123-067	Water Pan Assembly	X	X	X	X	X
16	111-025	Outlet Air Frame	X	X	X	X	X
17	508-056	Upper Back	X	X	X	X	X
18	111-018	Inlet Air Frame	X	X	X	X	X
19	508-069	Lower Back Assembly	X	X	X	X	X
20	506-108	Heat Exchanger Partition Top	X	X	X	X	X
21	552-138-* (1)	Induced Blower Door	X	X	X	X	X
22	135-097-* (1)	Induced Blower Hood	X	X	X	X	X
23	152-139-* (1)	Burner Door	X	X	X	X	X
24	132-096	Inner Control Cover	X	X	X	X	X
24	132-116	Inner Control Cover					
25	152-136-* (1)	Outer Control Cover	X	X	X	X	X
26	119-020-* (1)	Side Condenser Grille	X	X	X	X	X
27	552-137-* (1)	Filter Access	X	X	X	X	X
28	514-123-* (1)	Upper Front	X	X	X	X	X
29	168-106-* (1)	Inner Vent Terminal	X	X	X	X	X
30	169-107-* (1)	Outer Vent Terminal	X	X	X	X	X
31	514-080-* (1)	Lower Front	X	X	X	X	X
32	168-003	Secondary Air Baffle	X	X	X	X	X
33	119-003-* (1)	Front Condenser Grille	X	X	X	X	X
34	168-002	Flue Baffle	X	X	X	X	X
35	169-111	Flue Transition	X	X	X	X	X
36	501-178-* (1)	Right Side Assembly	X	X	X	X	X
37	140-164	Switch Support	X	X	X	X	X

(1) Exterior cabinet parts are manufactured with various color options. To insure that you receive the proper color, you must include the complete model and serial number of the unit for which parts are being ordered.

**This Table references Exploded View on Pages 1**

**This page has been  
left blank intentionally.**

# FUNCTIONAL COMPONENTS



SEXP-257

This Exploded View referenced in Tables on Page 6 and 7

# FUNCTIONAL COMPONENTS

## U.S. Models Only

Drawing No.	Part No.	Description	WAG30D-A54C	WAG36D-A54C	WAG36D-B54C	WAG36D-C54C	WAG40D-A54C	WAG40D-B54C	WAG40D-C54C
1	8000-132	Compressor	X						
1	8000-125	Compressor		X					
1	8000-133	Compressor			X				
1	8000-134	Compressor				X			
1	8000-126	Compressor					X		
1	8000-127	Compressor						X	
1	8000-128	Compressor							X
2	900-123	Blower Assembly (Complete)	X	X	X	X	X	X	X
3	5152-059	Blower Wheel	X	X	X	X	X	X	X
4	8200-033	Motor Mount Band	X	X	X	X	X	X	X
5	8200-036	Motor Mount Arm	3	3	3	3	3	3	3
6	8552-002	Capacitor	X	X	X	X	X	X	X
7	8105-031	Blower Motor	X	X	X	X	X	X	X
8	151-083	Blower Housing	X	X	X	X	X	X	X
9	144-129	Diffuser	X	X	X	X	X	X	X
10	104-752	Blower Seal	X	X	X	X	X	X	X
11	901-0128	Burner Assembly (Complete)	X	X	X	X	X	X	X
12	9010-043	High Rate Orifice (Nat. #36)	2	2	2	2	2	2	2
13	5651-142	Gas Valve	X	X	X	X	X	X	X
14	8554-023	Igniter / Sensor Assembly	X	X	X	X	X	X	X
15	5818-023	Burner Manifold	X	X	X	X	X	X	X
16	9010-036	Burner (2 Cell)	X	X	X	X	X	X	X
16	S163-025	Burner (NOx Assembly) ②							
17	8554-022 ①	Pilot Burner	X	X	X	X	X	X	X
18	112Y095	Left Manifold Bracket	2	2	2	2	2	2	2
20	5451-015	Rubber Grommet	X	X	X	X	X	X	X
21	8406-073	Pressure Switch	X	X	X	X	X	X	X
22	8402-067	Limit Control	X	X	X	X	X	X	X
23	8109-002	Induced Draft Motor	X	X	X	X	X	X	X
24	800-0128	Capillary Assembly	X						
24	800-0129	Capillary Assembly		X	X	X			
24	800-0130	Capillary Assembly					X	X	X
25	7004-016	Air Filter	X	X	X	X	X	X	X
26	400-0027	Low Rate Orifice Kit (Nat. #40)	X	X	X	X	X	X	X
27	8407-003	460V Transformer				X			X
28	5051-035	Condenser Coil	X						
28	5051-054	Condenser Coil		X	X	X			
28	5051-050	Condenser Coil					X	X	X
29	5060-037	Evaporator Coil	X						
29	5060-050	Evaporator Coil		X	X	X	X	X	X
30	8103-019	Condenser Motor	X						
30	8105-034	Condenser Motor		X	X	X	X	X	X
31	8200-037	Fan Motor Mount	X	X	X	X	X	X	X
32	5151-038	Fan Blade	X						
32	5151-028	Fan Blade		X	X	X	X	X	X
33	913-0068	Fresh Air Damper Assembly	X	X	X	X	X	X	X
34	7003-036	Air Filter	X	X	X	X	X	X	X
35	112X095	Right Manifold Bracket	X	X	X	X	X	X	X
36	104-971	Blower Angles	2	2	2	2	2	2	2
37	8406-046	Flame Rollout Switch	X	X	X	X	X	X	X
38	140-164	Pressure Switch Bracket	X	X	X	X	X	X	X
NS	8620-184	Pilot Gas Tube w/Fittings	X	X	X	X	X	X	X
NS	8406-061	Low Pressure Switch							
NS	8406-055	High Pressure Switch							

NS Not Shown

① Includes Igniter/Sensor Assembly

② For use on "X" suffix models only

**This Table references Exploded View on Pages 5**

# FUNCTIONAL COMPONENTS

## Canadian Models Only

### Drawing

Drawing No.	Part No.	Description	WAG30D-A54CD055	WAG36D-A54CD055	WAG36D-B54CD055	WAG40D-A54CD055	WAG40D-B54CD055
1	8000-132	Compressor	X				
1	8000-125	Compressor		X			
1	8000-133	Compressor			X		
1	8000-134	Compressor					
1	8000-126	Compressor				X	
1	8000-127	Compressor					X
1	8000-128	Compressor					
2	900-123	Blower Assembly (Complete)	X	X	X	X	X
3	5152-059	Blower Wheel	X	X	X	X	X
4	8200-033	Motor Mount Band	X	X	X	X	X
5	8200-036	Motor Mount Arm	3	3	3	3	3
6	8552-002	Capacitor	X	X	X	X	X
7	8105-031	Blower Motor	X	X	X	X	X
8	151-083	Blower Housing	X	X	X	X	X
9	144-129	Diffuser	X	X	X	X	X
10	104-752	Blower Seal	X	X	X	X	X
11	901-0128	Burner Assembly (Complete)	X	X	X	X	X
12	9010-043	High Rate Orifice (Nat. #36)	2	2	2	2	2
13	5651-142	Gas Valve	X	X	X	X	X
14	8554-023	Igniter/Sensor	X	X	X	X	X
15	5818-023	Burner Manifold	X	X	X	X	X
16	9010-036	Burner (2 Cell)	X	X	X	X	X
17	8554-022 ①	Pilot Burner	X	X	X	X	X
18	112Y095	Left Manifold Bracket	2	2	2	2	2
20	5451-015	Rubber Grommet	X	X	X	X	X
21	8406-073	Pressure Switch	X	X	X	X	X
22	8402-067	Limit Control	X	X	X	X	X
23	8109-002	Induced Draft Motor	X	X	X	X	X
24	800-0128	Capillary Assembly	X				
24	800-0129	Capillary Assembly		X	X		
24	800-0130	Capillary Assembly				X	X
25	7004-016	Air Filter	X	X	X	X	X
26	400-0027	Low Rate Orifice Kit (Nat. #40)	X	X	X	X	X
27	8407-003	460V Transformer					
28	5051-035	Condenser Coil	X				
28	5051-054	Condenser Coil		X	X		
28	5051-050	Condenser Coil				X	X
29	5060-037	Evaporator Coil	X				
29	5060-050	Evaporator Coil		X	X	X	X
30	8103-019	Condenser Motor	X				
30	8105-034	Condenser Motor		X	X	X	X
31	8200-037	Fan Motor Mount	X	X	X	X	X
32	5151-038	Fan Blade	X				
32	5151-028	Fan Blade		X	X	X	X
33	913-0068	Fresh Air Damper Assembly	X	X	X	X	X
34	7003-036	Air Filter	X	X	X	X	X
35	112X095	Right Manifold Bracket	X	X	X	X	X
36	104-971	Blower Angles	2	2	2	2	2
37	8406-046	Flame Rollout Switch	X	X	X	X	X
38	140-164	Pressure Switch Bracket	X	X	X	X	X
NS	8620-184	Pilot Gas Tube w/Fittings	X	X	X	X	X
NS	8406-061	Low Pressure Switch	X	X	X	X	X
NS	8406-055	High Pressure Switch	X	X	X	X	X

NS Not Shown ① Includes Igniter/Sensor Assembly

Manual 2100-802

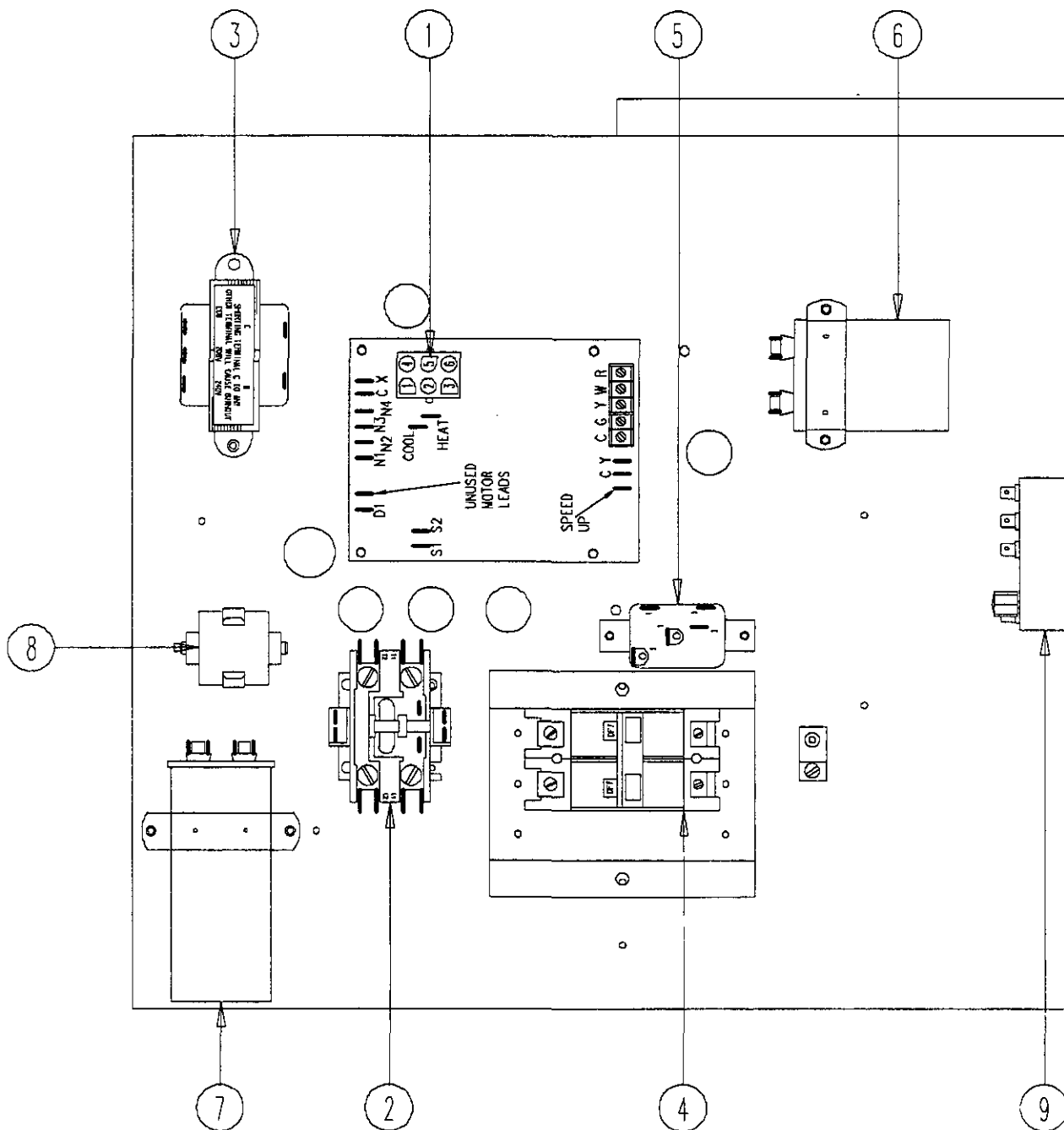
Page 7

**This Table references Exploded View on Pages 5**



**This page has been  
left blank intentionally.**

# CONTROL PANEL COMPONENTS



**This Exploded View referenced in Tables on Page 10 and 11**

# CONTROL PANEL COMPONENTS

## U.S. Models Only

Drawing No.	Part No.	Description	WAG30D-A54C	WAG36D-A54C	WAG36D-B54C	WAG36D-C54C	WAG40D-A54C	WAG40D-B54C	WAG40D-C54C
1	8201-076	Blow  il	X	X	X	X	X	X	X
2	8401-007	Contactoꝛ Coil	X	X			X		
2	8401-002	Contactoꝛ Coil			X	X		X	X
3	8407-046	Transformer	X	X	X	X	X	X	X
4	8615-038	Circuit Breaker 15 A 2 Pole	X						
4	8615-055	Circuit Breaker 40 A 2 Pole		X					
4	8615-052	Circuit Breaker 30 A 3 Pole			X			X	
4	8615-039	Circuit Breaker 45 A 2 Pole					X		
4	8615-053	Pull Disconnect				X			X
5	8201-008	Outdoor Fan Relay				X			X
6	8552-005	Fan Capacitoꝛ			X	X		X	X
7	8552-048	Compressoꝛ/Fan Capacitoꝛ	X						
7	8552-055	Compressoꝛ/Fan Capacitoꝛ		X			X		
8		Low Voltage Kit	↔ Field Installed ↔						
9		Consolidated Control Module	↔ Field Installed ↔						
	4085-116	Wiring Diagram	X	X			X		
	4085-216	Wiring Diagram			X			X	
	4085-313	Wiring Diagram				X			X

This Table references Exploded View on Pages 9

# CONTROL PANEL COMPONENTS

## Canadian Models Only

Drawing			WAG30D-A54CD055	WAG36D-A54CD055	WAG36D-B54CD055	WAG40D-A54CD055	WAG40D-B54CD055
No.	Part No.	Description					
1	8201-076	Blower Coil	X	X	X	X	X
2	8401-007	Contactoer Coil	X	X		X	
2	8401-002	Contactoer Coil			X		X
3	8407-046	Transformer	X	X	X	X	X
4	8615-038	Circuit Breaker 35 A 2 Pole	X				
4	8615-055	Circuit Breaker 40 A 2 Pole		X			
4	8615-052	Circuit Breaker 30 A 3 Pole			X		X
4	8615-039	Circuit Breaker 45 A 2 Pole				X	
5	8201-008	Outdoor Fan Relay					
6	8552-005	Fan Capacitor			X		X
7	8552-048	Compressor/Fan Capacitor	X				
7	8552-055	Compressor/Fan Capacitor		X		X	
8		Low Voltage Kit	← Field Installed →				
9		Consolidated Control Module	X	X	X	X	X
	4085-114	Wiring Diagram	X	X		X	
	4085-214	Wiring Diagram			X		X

This Table references Exploded View on Pages 9