

REPLACEMENT PARTS MANUAL

UPFLOW GAS FURNACE

MODELS: DCH050D30A, DCH065D36A,  
DCH080D48A, DCH095D60A

Manual 2110-859

Revision A

Date 10-12-92

Supersedes 06-12-92

\*\*\*\*\*  
\* GENERAL NOTES \*  
\*\*\*\*\*

\*Revised and/or additional pages may be issued from time to time.  
\*A complete and current manual **consists** of pages dated as shown in the following index.

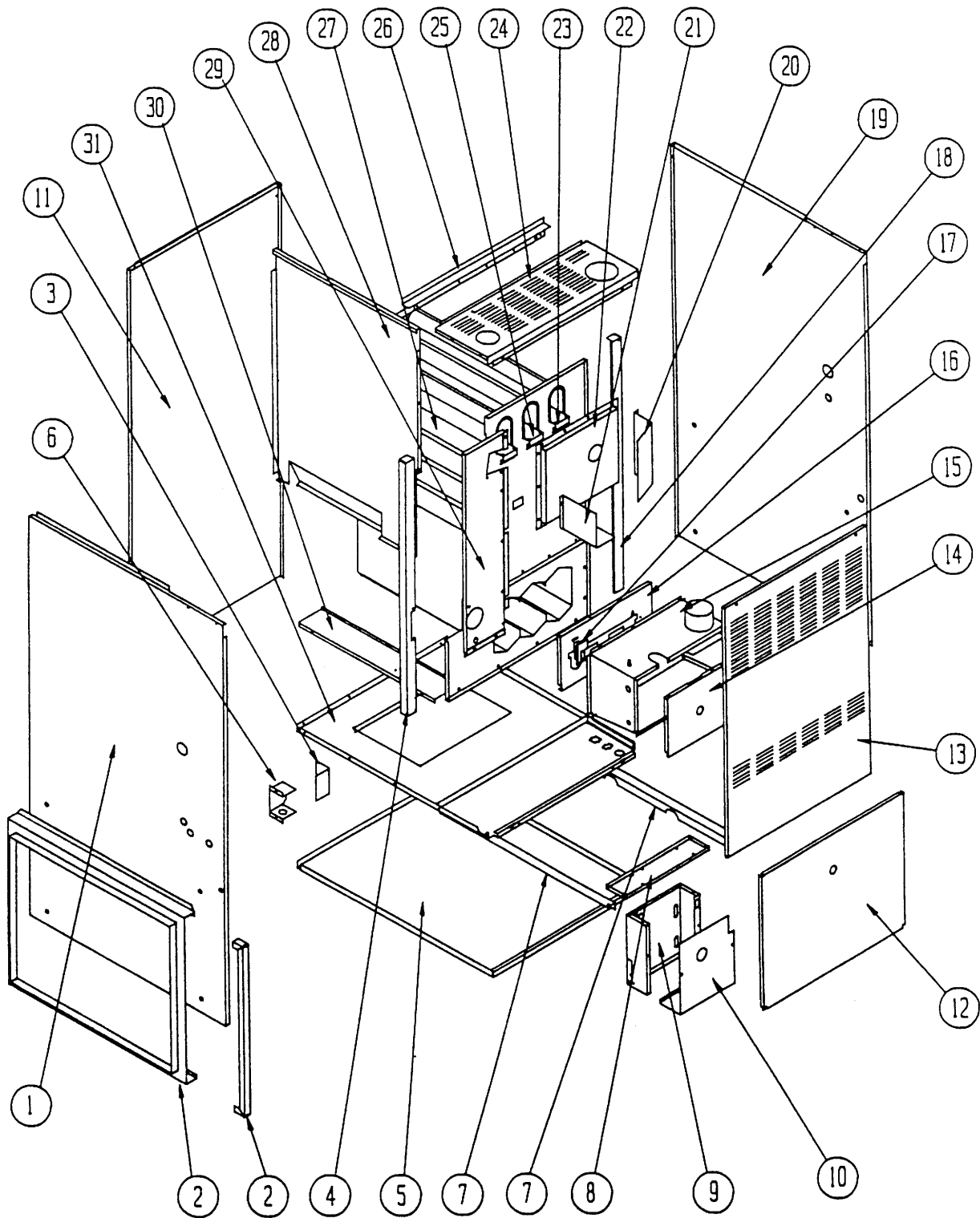
\*\*\*\*\*  
\*\* INDEX \*\*  
\*\*\*\*\*

<u>Page</u>	<u>Description</u>	<u>Page</u>	<u>Date</u>	<u>Supersedes</u>
	Cabinet Components--Exploded View	1	6-12-92	
"	" -Usage List	2	10-12-92	6-12-92
<b>Functional</b>	<b>Components--Exploded View</b>	3	6-12-92	
"	" --Usage List	4	10-12-92	6-12-92

\*\*\*\*\*  
\*\*\* IMPORTANT \*\*\*  
\*\*\*\*\*

Contact the **installing** and/or local **Bard distributor** for all parts **requirements**. Make sure you have the complete model and **serial** number available **from** the **unit** rating plate.

CABINET COMPONENTS



MODELS DCH080, DCH095 Shown

Date: 6-12-92  
Supersedes:

2110-859  
Page: 1

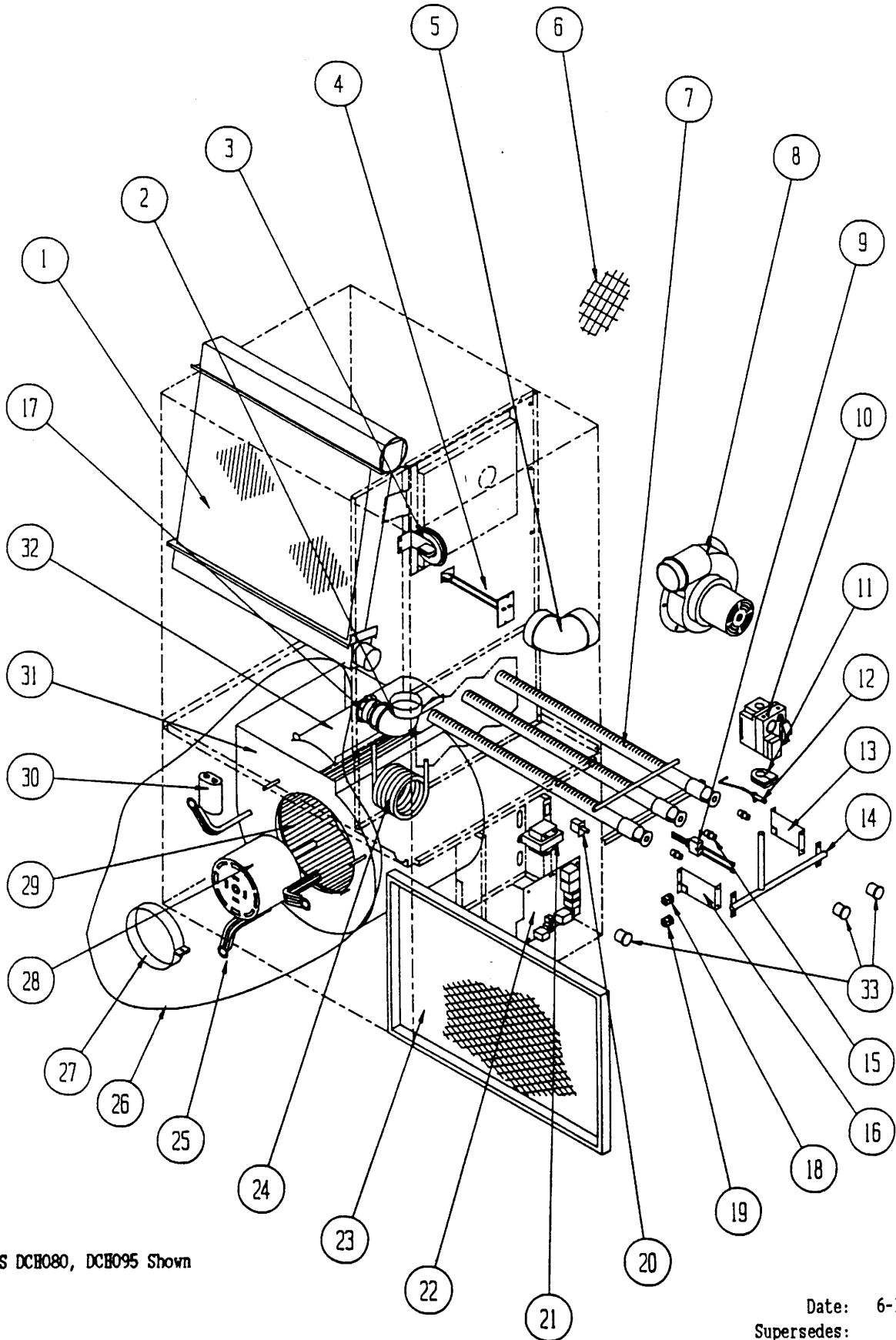
CABINET COMPONENTS

Dwg. No.	Part No.	Description	D	D	D	D	D	D
			C	C	C	C	C	C
			H	H	H	H	H	H
			0	0	0	0	0	0
			3	5	6	8	9	1
			6	0	5	0	5	5
			D	D	D	D	D	D
			3	3	3	4	6	6
			0	0	6	8	0	0
			A	A	A	A	A	A
1	500-231	Left Side Assembly		X	X	X	X	
2	FR21	Filter Rack (1)		X	X	X	X	
3	132-107	Junction Box Door		X	X	X	X	
4	104-855	Left Side Angle		X	X	X	X	
5	126-200	Lower Base		X	X			
5	126-205	Lower Base				X	X	
6	116-130	Junction Box		X	X	X	X	
7	104-857	Blower Angle		X	X		X	
7	104-863	Blower Angle				X		
8	116-125	Control Panel Bracket		X	X			
8	116-132	Control Panel Bracket				X		
8	116-133	Control Panel Bracket					X	
9	116-126	Control Panel		X	X	X	X	
10	132-105	Control Panel Cover		X	X	X	X	
11	508-090	Back		X	X			
11	508-093	Back				X	X	
12	152-210	Blower Door		X	X			
12	152-214	Blower Door				X	X	
13	152-209	Vestibule Door		X	X			
13	152-216	Vestibule Door				X	X	
14	168-052	Burner Box Cover		X	X			
14	168-058	Burner Box Cover				X	X	
15	913-0066	Burner Box		X	X			
15	913-0067	Burner Box				X	X	
16	168-050	Secondary Air Restrictor		X	X			
16	168-055	Secondary Air Restrictor				X	X	
17	112-147	Ignitor Bracket		X	X	X	X	
18	104-856	Right Side Angle		X	X	X	X	
19	500-230	Right Side Assembly		X	X	X	X	
20	134-121	Intake Air Shield		X	X			
21	134-120	Vent Air Shield		X	X	X	X	
22	168-054	Collector Box		X	X			
22	168-059	Collector Box				X	X	
23	168-002	Flue Baffle		2	2	3	3	
24	106-131	Top Fill		X	X			
24	106-135	Top Fill				X	X	
25	168-013	Flue Baffle						
26	140-134	Plenum Support		X	X			
26	140-135	Plenum Support				X	X	
27	171-193	Heat Exchanger		X	X			
27	171-194	Heat Exchanger				X	X	
28	134-099	Internal Coil Partition		X	X	X	X	
29	520-183	Coil Partition Assembly		X	X	X	X	
30	140-133	Coil Support		X	X	X	X	
31	127-201	Blower Base Assembly		X	X			
31	127-207	Blower Base Assembly				X	X	

(1) Includes 16 x 25 permanent filter.

Date: 10-12-92  
Supersedes: 6-12-92

FUNCTIONAL COMPONENTS



MODELS DCB080, DCB095 Shown

Date: 6-12-92  
Supersedes:

FUNCTIONAL COMPONENTS

Dwg. No.	Part No.	Description	D	D	D	D	D	D
			C	C	C	C	C	C
			H	H	H	H	H	H
			0	0	0	0	0	0
			3	5	6	8	9	1
			6	0	5	0	5	5
			D	D	D	D	D	D
			3	3	3	4	6	6
			0	0	6	8	0	0
			A	A	A	A	A	A
1	5055-002	Coil Assembly		X		X		
1	5055-003	Coil Assembly			X		X	
2	6095-005	2" Street Elbow		X	X	X	X	
3	8406-068	Pressure Switch		X		X		
3	8406-069	Pressure Switch			X			
3	8406-070	Pressure Switch					X	
4	8402-067	Limit Control			X			
4	8402-068	Limit Control		X				
4	8402-064	Limit Control				X	X	
5	6095-006	High Temperature Elbow		X	X	X	X	
6	7002-016	2.375" Bird Screen		2	2			
6	7002-017	2.875" Bird Screen		2	2			
6	7002-018	3.500" Bird Screen		2	2	2	2	
7	9010-061	Burner		X	X			
7	9010-062	Burner				X	X	
8	8620-068	Induced Draft Blower Assembly		X				
8	8620-069	Induced Draft Blower Assembly			X			
8	8620-070	Induced Draft Blower Assembly				X		
8	8620-071	Induced Draft Blower Assembly					X	
9	8553-003	Ignitor		X	X	X	X	
10	5651-083	Gas Valve		X	X			
10	5651-089	Gas Valve				X	X	
11	5451-017	Manifold Gronnet		X	X	X	X	
12	8554-016	Sensor		X	X	X	X	
13	112X123	Right Manifold Bracket		X	X	X	X	
14	5818-028	Gas Manifold		X	X			
14	5818-029	Gas Manifold				X	X	
15	9010-054	Gas Orifice 3/32"		X				
15	9010-043	Gas Orifice #36			X			
15	9010-057	Gas Orifice 2.45MM				X		
15	9010-052	Gas Orifice 2.70 MM					X	
16	112Y123	Left Manifold Bracket		X	X	X	X	
17	6093-007	No-Hub Connector		X	X	X	X	
18	8611-073	Single Terminal Bushing		X	X	X	X	
19	8611-074	Double Terminal Bushing		X	X	X	X	
20	8406-047	Door Switch		X	X	X	X	
21	8407-039	Transformer		X	X	X	X	
22	5651-084	Furnace Control		X	X	X	X	
23	7003-004	16 x 25 Permanent Filter		X	X	X	X	
24	5452-005-6000	Vinyl Drain Hose		X	X	X	X	
25	8200-034	Motor Mount Arm		3	3	3		
25	8200-035	Motor Mount Arm					3	
26	900-174	Blower Assembly		X				
26	900-173	Blower Assembly			X			
26	900-175	Blower Assembly				X		
26	900-176	Blower Assembly					X	

Date: 10-12-92  
Supersedes: 6-12-92

FUNCTIONAL COMPONENTS

Dwg. No.	Part No.	Description	D	D	D	D	D	D
			C	C	C	C	C	C
			H	H	H	H	H	H
			0	0	0	0	0	1
			3	5	6	8	9	1
			6	0	5	0	5	5
			D	D	D	D	D	D
			3	3	3	4	6	6
			0	0	6	8	0	0
			A	A	A	A	A	A
27	8200-033	Motor Mount Band		X	X	X	X	
28	8105-038	1/3 HP Motor 115V		X				
28	8105-037	1/3 HP Motor 115V			X			
28	8106-028	1/2 HP Motor 115V				X		
28	8107-005	3/4 HP Motor 115V					X	
29	5152-005	Blower Wheel		X				
29	5152-013	Blower Wheel			X			
29	5152-053	Blower Wheel				X		
29	5152-050	Blower Wheel					X	
30	8552-002	Capacitor 5 MFD 370V		X	X			
30	8552-004	Capacitor 7 MFD 370V				X		
30	8552-026	Capacitor 15 MFD 370V					X	
31	151-085	Blower Housing		X	X			
31	151-082	Blower Housing				X		
31	5152-050	Blower Housing (1)					X	
32	144-127	Diffuser		X	X			
32	144-129	Diffuser				X		
32	(1) N/A	Diffuser					X	

(1) Drawing No. 31 part No. 5152-050 includes housing, diffuser, and wheel part No. 5152-053.

Date: 6-12-92  
Supersedes: