

REPLACEMENT PARTS MANUAL

UPFLOW GAS FURNACE

MODELS : DCH036D30A, DCH050D30A, DCH065D36A,  
DCH080D48A, DCH095D60A, DCH110D60A

Manual 2110-859

Revision B

Date 06-09-93

Supersedes 10- 12-92

\*\*\*\*\*  
\* GENERAL NOTES \*  
\*\*\*\*\*

\*Revised and/or additional pages may be issued from time to time.  
\*A complete and current manual consists of pages dated as shown in the following index.

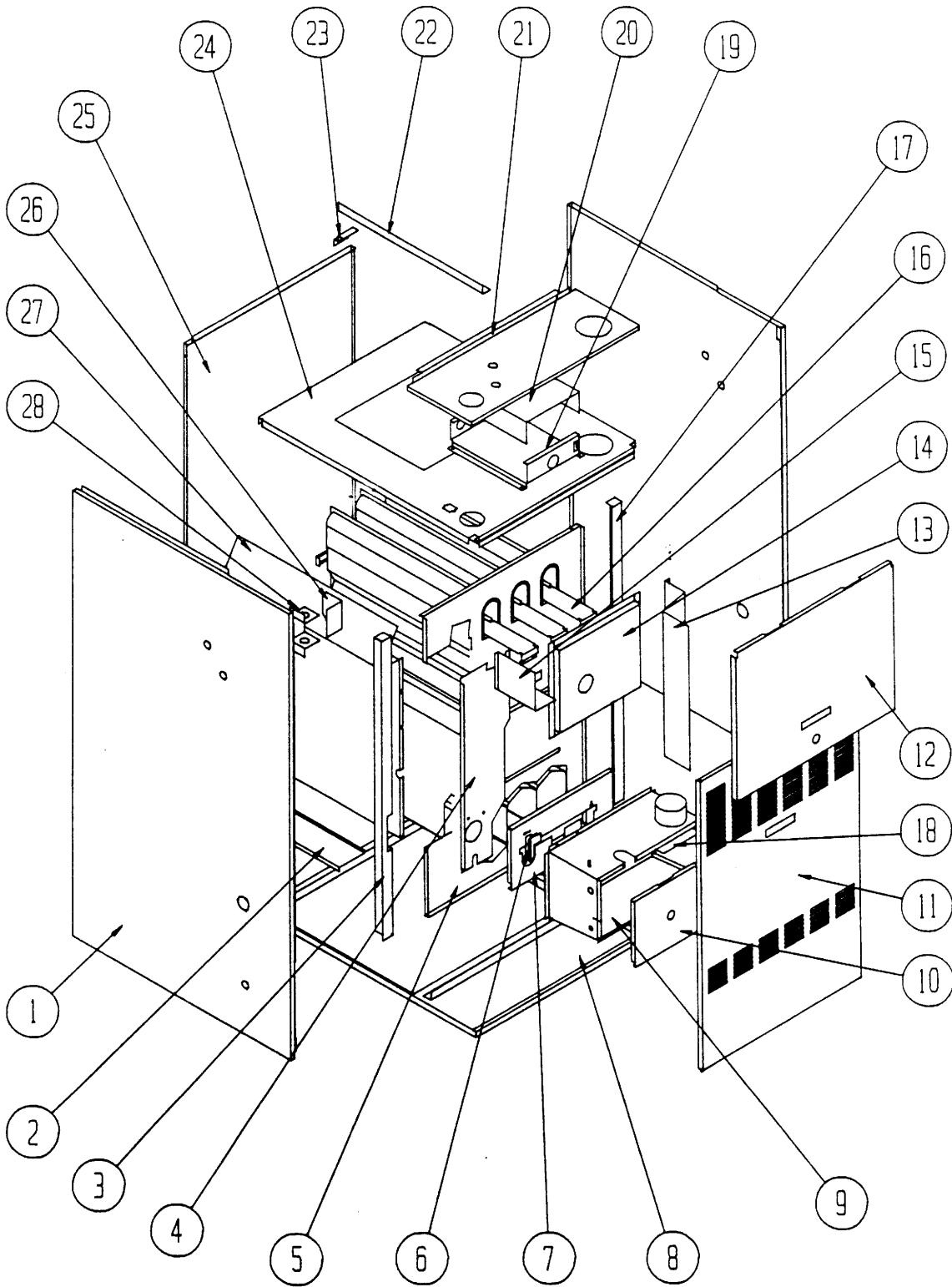
\*\*\*\*\*  
\*\* INDEX \*\*  
\*\*\*\*\*

<u>Page</u>	<u>Description</u>	<u>Page</u>	<u>Date</u>	<u>Supersedes</u>
	Cabinet Components--Exploded View	1	06-12-92	
"	" --Usage List	2	06-09-93	06-12-92
"	" --Usage List	3	06-09-93	06-12-92
Functional	Components--Exploded View	4	06-09-93	10-12-92
"	" --Usage List	5	06-09-93	06-12-92
"	" --Usage List	6	06-09-93	

\*\*\*\*\*  
\*\*\* IMPORTANT \*\*\*  
\*\*\*\*\*

Contact the installing and/or local Bard distributor for all parts requirements. Make sure you have the complete model and serial number available from the unit rating plate.

CABINET COMPONENTS



MODELS DCB080, DCB095 Shown

Date: 6-12-92  
Supersedes:

2110-859  
Page: 1

CABINET COMPONENTS

Dwg. No.	Part No.	Description	D	D	D	D	D	D
			C	C	C	C	C	C
			H	H	H	H	H	H
			0	0	0	0	0	0
			3	5	6	8	9	1
			6	0	5	0	5	0
			D	D	D	D	D	D
			3	3	3	4	6	6
			0	0	6	8	0	0
			A	A	A	A	A	A
1	500-231	Left Side Assembly	x	x	x	x	x	x
2	FR21	Filter Rack (1)	x	x	x	x	x	x
3	132-107	Junction Box Door	x	x	x	x	x	x
4	104-855	Left Side Angle	x	x	x	x	x	x
5	126-200	Lower Base	x	x	x			
5	126-205	Lower Base				x	x	
5	126-206	Lower Base						x
6	116-130	Junction Box	x	x	x	x	x	x
7	104-857	Blower Angle	x	x	x		x	
7	104-863	Blower Angle				x		
7	104-894	Blower Angle						x
8	116-125	Control Panel Bracket	x	x	x			
8	116-132	Control Panel Bracket				x		
8	116-133	Control Panel Bracket					x	
8	116-152	Control Panel Bracket						x
9	116-126	Control Panel	x	x	x	x	x	x
10	132-105	Control Panel Cover	x	x	x	x	x	x
11	508-090	Back	x	x	x			
11	508-093	Back				x	x	
11	508-094	Back Assembly						x
12	S152-210	Blower Door	x	x	x			
12	S152-214	Blower Door				x	x	
12	S152-215	Blower Door						x
13	S152-209	Vestibule Door	x	x	x			
13	S152-216	Vestibule Door				x	x	
13	S152-217	Vestibule Door						x
14	S168-052	Burner Box Cover	x	x	x			
14	S168-058	Burner Box Cover				x	x	
14	S168-063	Burner Box Cover						x
15	913-0066	Burner Box	x	x	x			
15	913-0067	Burner Box				x	x	
15	913-0070	Burner Box						x
16	168-050	Secondary Air Restrictor		x	x			
16	168-055	Secondary Air Restrictor				x	x	
16	168-060	Secondary Air Restrictor						x
16	168-068	Secondary Air Restrictor	x					
17	112-147	Ignitor Bracket	x	x	x	x	x	x
18	104-856	Right Side Angle	x	x	x	x	x	x
19	500-230	Right Side Assembly	x	x	x	x	x	x
20	134-121	Intake Air Shield	x	x	x			
21	134-120	Vent Air Shield	x	x	x	x	x	x

(1) Includes 16 x 25 permanent filter.

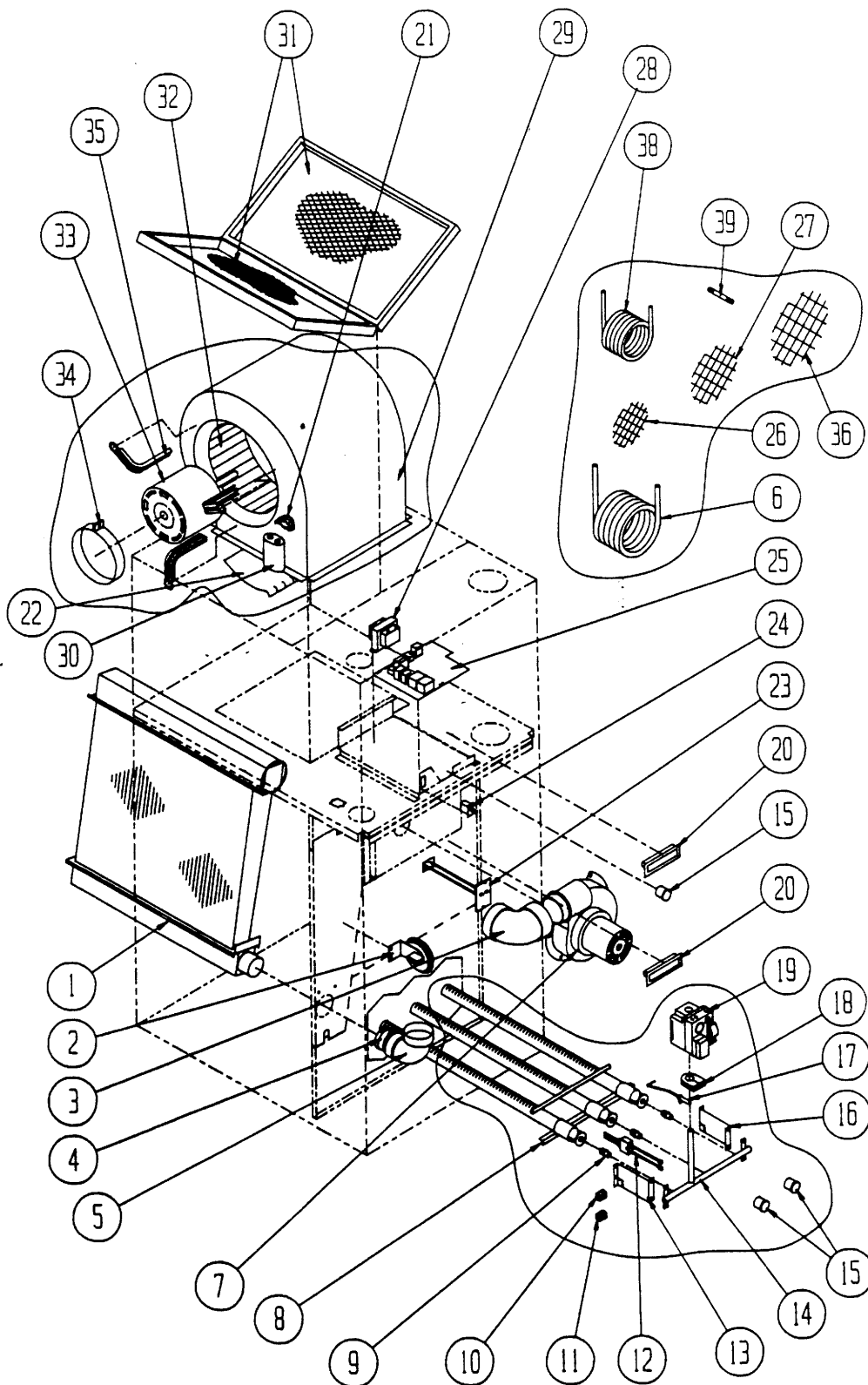
Date: 06-09-93  
Supersedes: 06-12-92

CABINET COMPONENTS

Dwg. No.	Part No.	Description	D	D	D	D	D	D
			C	C	C	C	C	C
			H	H	H	H	H	H
			0	0	0	0	0	1
			3	5	6	8	9	1
			6	0	5	0	5	0
			D	D	D	D	D	D
			3	3	3	4	6	6
			0	0	6	8	0	0
			A	A	A	A	A	A
22	168-054	Collector Box		X	X			
22	168-059	Collector Box				X	X	
22	S168-054	Collector Box		X	X			
22	S168-059	Collector Box				X	X	
22	S168-064	Collector Box						X
22	S168-066	Collector Box	X					
23	168-002	Flue Baffle		2	2	3	3	2
24	106-131	Top Fill		X	X			
24	106-135	Top Fill				X	X	
24	106-136	Top Fill						X
25	168-013	Flue Baffle	1					2
26	140-134	Plenum Support		X	X			
26	140-135	Plenum Support				X	X	
27	171-193	Heat Exchanger		X	X			
27	171-194	Heat Exchanger				X	X	
27	171-195	Heat Exchanger Assembly						X
27	171-200	Heat Exchanger Assembly	X					
28	S134-099	Internal Coil Partition		X	X	X	X	
28	S134-136	Internal Coil Partition	X					X
29	520-183	Coil Partition Assembly		X	X	X	X	
29	520-227	Coil Partition	X					X
30	140-133	Coil Support	X	X	X	X	X	X
31	127-201	Blower Base Assembly	X	X	X			
31	127-207	Blower Base Assembly				X	X	
31	S126-208	Blower Base Assembly						X

Date: 06-09-93  
Supersedes: 06-12-93

FUNCTIONAL COMPONENTS



MODELS DCH080, DCH095 Shown

Date: 06-09-93  
 Supersedes: 10-12-92

2110-859

Page: 4

FUNCTIONAL COMPONENTS

Dwg. No.	Part No.	Description	D	D	D	D	D	D
			C	C	C	C	C	C
			H	H	H	H	H	H
			0	0	0	0	0	0
			3	5	6	8	9	1
			6	0	5	0	5	0
			D	D	D	D	D	D
			3	3	3	4	6	6
			0	0	6	8	0	0
			A	A	A	A	A	A
1	5055-002	Coil Assembly		X		X		
1	5055-003	Coil Assembly	X		X		X	X
2	6095-005	2" Street Elbow--PVC	X	X	X	X	X	
2	6095-008	2" Street Elbow--ABS						X
3	8406-068	Pressure Switch		X		X		
3	8406-069	Pressure Switch			X			
3	8406-070	Pressure Switch	X				X	X
4	8402-064	Limit Control				X	X	
4	8402-067	Limit Control			X			X
4	8402-068	Limit Control		X				
4	8402-079	Limit Control	X					
5	6095-006	High Temperature Elbow	X	X	X	X	X	X
6	7002-022	2.375" Bird Screen	2	2	2			
6	7002-023	2.875" Bird Screen	2	2	2			
6	7002-024	3.500" Bird Screen	2	2	2	2	2	2
7	9010-060	Burner	X					
7	9010-061	Burner		X	X			
7	9010-062	Burner				X	X	
7	9010-063	Burner						X
8	8620-068	Induced Draft Blower Assembly	X	X	X	X	X	X
9	8553-003	Ignitor	X	X	X	X	X	X
10	5651-083	Gas Valve	X	X	X			
10	5651-089	Gas Valve				X	X	
10	5651-106	Gas Valve						X
11	5451-017	Manifold Gronnet	X	X	X	X	X	X
12	8554-016	Sensor		X	X	X	X	X
12	8554-018	Sensor	X					
13	112X148	Right Manifold Bracket	X	X	X	X	X	X
14	5818-028	Gas Manifold		X	X			
14	5818-029	Gas Manifold				X	X	
14	5818-030	Gas Manifold						X
14	5818-031	Gas Manifold	X					
15	9010-010	Gas Orifice #38						X
15	9010-043	Gas Orifice #36			X			
15	9010-052	Gas Orifice 2.70 MM					X	
15	9010-053	Gas Orifice #33	X					
15	9010-054	Gas Orifice 3/32"		X				
15	9010-057	Gas Orifice 2.45MM				X		
16	112Y148	Left Manifold Bracket	X	X	X	X	X	X
17	6093-007	No-Hub Connector	X	X	X	X	X	X
18	8611-073	Single Terminal Bushing	X	X	X	X	X	X
19	8611-074	Double Terminal Bushing	X	X	X	X	X	X

Date: 06-09-93  
Supersedes: 06-12-92

FUNCTIONAL COMPONENTS

Dwg. No.	Part No.	Description	D	D	D	D	D	D
			C	C	C	C	C	C
			H	H	H	H	H	H
			O	O	O	O	O	O
			3	5	6	8	9	1
			6	0	5	0	5	0
			D	D	D	D	D	D
			3	3	3	4	6	6
			0	0	6	8	0	0
			A	A	A	A	A	A
20	8406-047	Door Switch	x	x	x	x	x	x
21	8407-039	Transformer	x	x	x	x	x	x
22	5651-084	Furnace Control	x	x	x	x	x	x
23	7003-004	16 x 25 Permanent Filter	x	x	x	x	x	x
24	5452-005-6000	Vinyl Drain Hose	x	x	x	x	x	x
25	8200-034	Motor Mount Arm	3	3	3	3		
25	8200-035	Motor Mount Arm					3	3
26	900-173	Blower Assembly			x			
26	900-174	Blower Assembly	x	x				
26	900-175	Blower Assembly				x		
26	900-176	Blower Assembly					x	
26	900-177	Blower Assembly						x
27	8200-033	Motor Mount Band	x	x	x	x	x	x
28	8105-037	1/3 HP Motor 115V			x			
28	8105-038	1/3 HP Motor 115V	x	x				
28	8106-028	1/2 HP Motor 115V				x		
28	8107-005	3/4 HP Motor 115V					x	
28	8107-006	3/4 HP Motor 115V						x
29	5152-005	Blower Wheel	x	x				
29	5152-013	Blower Wheel			x			
29	5152-050	Blower Wheel					x	
29	5152-053	Blower Wheel				x		
29	5152-072	Blower Wheel						x
29	5152-073	Blower Wheel						x
30	8552-002	Capacitor 5 MFD 370V	x	x	x			
30	8552-004	Capacitor 7 MFD 370V				x		
30	8552-026	Capacitor 15 MFD 370V					x	x
31	151-082	Blower Housing				x		
31	151-085	Blower Housing	x	x	x			
31	151-102	Blower Housing						x
31	151-103	Blower Housing						x
31	5152-050	Blower Housing (1)					x	
32	144-127	Diffuser	x	x	x			
32	144-129	Diffuser				x		
32	144-167	Diffuser						2
32	(1) N/A	Diffuser					x	
33	8611-075	Sight Glass	3	3	3	3	3	3
33	112-158	Blower Assembly Bracket						2

(1) Drawing No. 31 part No. 5152-050 includes housing, diffuser, and wheel part No. 5152-053.

Date: 06-09-93  
Supersedes: